



WEBTEC

Webtec Products Limited

Oil Solutions

For Webtec Products

Tel: 0421 336 009 Fax: 03 9012 4332

E-mail: sales@oilsolutions.com.au

www.oilsolutions.com.au

RFIK Series Mechanical Hydraulic Tester

- 120 lpm
- 200 lpm
- Up to 420 bar



RFIK Mechanical Hydraulic Tester

The RFIK mechanical hydraulic tester provides the ideal solution for servicing and commissioning hydraulic circuits on agricultural and other mobile machinery.

The kit comprises of a direct acting flow indicator with built in thermometer, a loading valve and a pressure gauge all built into a strong steel case with a removable lid.

The unit is self contained and requires no electrical power. The dials are clear and easy to read.

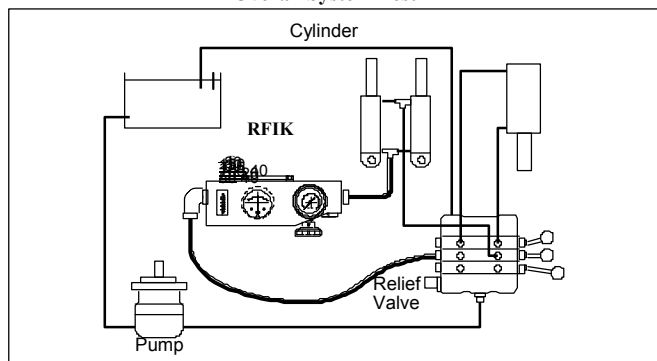
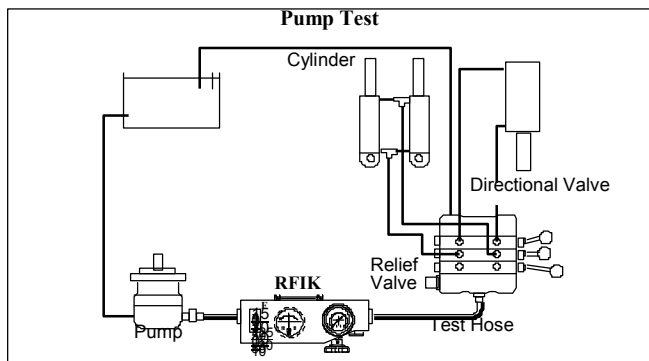
Installation is extremely simple and the test kit can be connected into either the pressure or return lines. The loading valve and pressure gauge allow a progressive build up of system pressure in complete safety.

The test kit provides the service engineer with quick, accurate and simple performance testing of pumps, motors, valves, cylinders and complete hydraulic circuits.

Note: This unit is not designed for permanent installation.

Features

- **MEASURES** Flow, Pressure, Temperature
- **ALLOWS** reverse flow
- **FLOW** accuracy $\pm 4\%$ FSD
- **HIGH** temperature up to 110°C (230°F)
- **LARGE** easy to read dials
- **NO** batteries required
- **SMOOTH** pressure control up to 420 bar (6000 psi)
- **SAFE** to use, with INTERPASS internal safety protection system. Protects system and operator against accidental over-pressure in both flow directions



Another quality product from the Webster Range

Specifications

Model No.	Flow Range		Max. Working Pressure		Temperature Range	
	lpm	gpm (US)	bar	psi	°C	°F
RFIK120-B-6	5 - 120	1.3 - 32	420	6000	20 - 110	65 - 230
RFIK200-B-6	10 - 200	2.0 - 54	420	6000	20 - 110	65 - 230

Connections

By flexible hose (1/2 - 1 metre recommended length)

RFIK120-B-6: Inlet Port: 1" BSPF, Outlet Port: 3/4" BSPF

RFIK200-B-6: Inlet Port: 1" BSPF, Outlet Port: 3/4" BSPF

Adaptors

Adaptors are fitted as standard to provide inlet & outlet connections

RFIK120-B-6: 1" BSPF Male

RFIK200-B-6: 1" BSPF Male

Measurement and Indication

Flow

Measured by a tapered metering piston moving within a fixed, sharp edged orifice designed to minimise the effects of changes in temperature and viscosity. The piston movement is proportional to the change in flow rate. In reverse the piston moves back to allow the flow to return at low pressure.

Accuracy: ± 4% of full flow over range 20 - 40 cSt.

Pressure Drop (In both flow directions)

RFIK120-B-6: 5 bar (72.5 psi)

RFIK200-B-6: 14.5 bar (210 psi)

At full flow with oil viscosity 28 centistokes.

Pressure

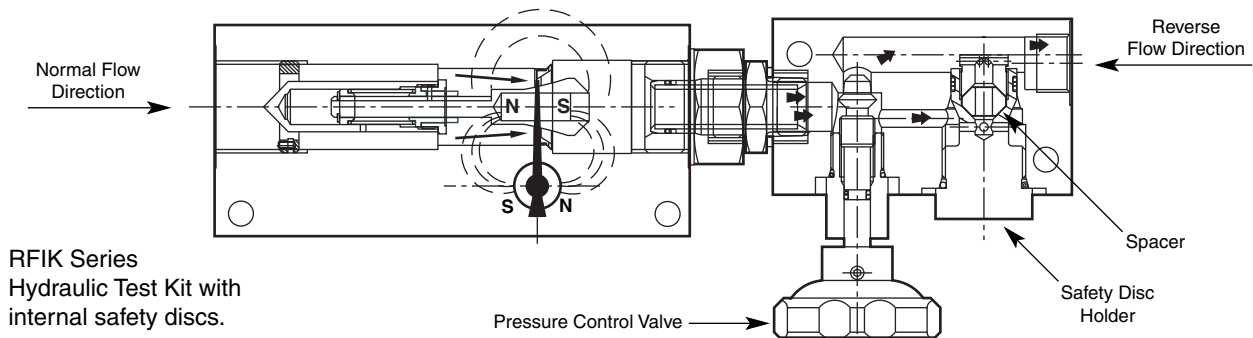
Glycerine filled 63 mm (2 1/2") pressure gauge 0 - 420 bar (0 - 6000 psi) gives a continuous reading of system pressure.

Accuracy: ± 1.6% of full scale

Temperature

For continuous use at fluid temperatures up to 80°C (180°F), for intermittent use for less than 10 minutes, at up to 110°C (230°F). Indicated in °C and °F by a thermometer built into the flowblock to measure temperature changes in the fluid passage.

Accuracy: ± 2.5°C or ± 5°F



RFIK Series
Hydraulic Test Kit with
internal safety discs.

Construction

Flow Block

Solid high tensile flow block houses a metering piston and guide, the piston moves against a calibrated spring housed in a guide. The piston can move in both directions allowing flow from either the inlet and outlet port as required. The piston is magnetically coupled to a rotary pointer to provide a direct reading of flow from the inlet direction on a clear 63 mm (2 1/2") diameter flow scale calibrated in lpm and gpm. Both the flow and the temperature scales are shielded behind impact resistant windows and protected by a metal cover. The whole unit is fully sealed within a strong metal cover.

Case

The complete unit is built into a strong steel case which provides full protection against accidental damage during testing. A detachable lid provides access to the instrument dials and the safety disc cartridge is easily accessed to replace safety discs.

Dimensions/Weight

310 x 105 x 120 mm (12.25 x 4.125 x 4.875 inches)

5 kg (11 lbs)

Loading Valve and Pressure Gauge

The loading valve is connected directly to the flow block and a 420 bar, 6000 psi pressure gauge is mounted in the inlet section of the loading valve. The valve is easy to operate and, combined with the pressure gauge, allows sensitive and progressive control of system pressure throughout the working range.

Safety Discs

Protection against over pressure is provided by two internal safety discs which relieve at 440 bar, 6400 psi without external spillage. The safety discs are housed in a cartridge and are easily replaceable.

Other Products.

Aluminium free flow indicators suitable for Mining / Offshore and High Pressure Water applications are available. Consult sales office.

How to order

Specify Model from table above together with any adaptor fitting required.



Certificate No.8242