



Oil Solutions

ATZ Series

In Tank Suction Filters



Filtration

Global Filtration Technology

In Tank Suction Filters

ATZ Series

Features/Applications for ATZ Series

- Flows to 80 GPM
- 10 Micron to 120 Micron Absolute
- Disposable or Recleanable Elements
- Magnetic prefiltration
- Built-in shut off valve
- Non-bypass design
- No internal leakage paths
- Top, side or bottom mounting

Specifications

Housing Data:

Material:

Housing – Aluminum Alloy
 Top Closure – Gray Iron
 Internals – Carbon Steel and Aluminum
 Seals – Nitrile (Standard), Fluorocarbon

Temperature Range:

Operating -40°F to +250°F (-40°C to +120°C)

Weight:

ATZ-120 – 12.8. lbs. (5.8 kg)
 ATZ-300 – 24.5. lbs. (11.5 kg)

Indicator Data:

Vacuum Gauge:

Green 0-2 psi (0-4.1 in. Hg).
 Orange 2-3 psi (4.1-6.1 in. Hg).
 Red 3-15 psi (6.1-30.6 in Hg.)

Electrical Switch:

250 psi Max.
 5" Hg Rising
 5 Amp, SPDT
 ½" Conduit Connection
 ¼" NPT (Male)

Element Data

Media Type	Absolute Rating	Multipass Test Results To ISO 4572 (Time Weighted Averages)						
		β_3	β_6	β_{10}	β_{12}	β_{20}	β_{25}	β_{35}
FXX	36	—	—	2	3.5	6	23	≥100

Hardware = Plated Carbon Steel

FXX = Cellulose Fiber, Epoxy End Cap Adhesive, Suitable for Petroleum Base Fluids Only.

SF = Stainless Steel Mesh, Epoxy End Cap Adhesive, Suitable for all Conventional Hydraulic Fluids.

Flow/Pressure Drop Data

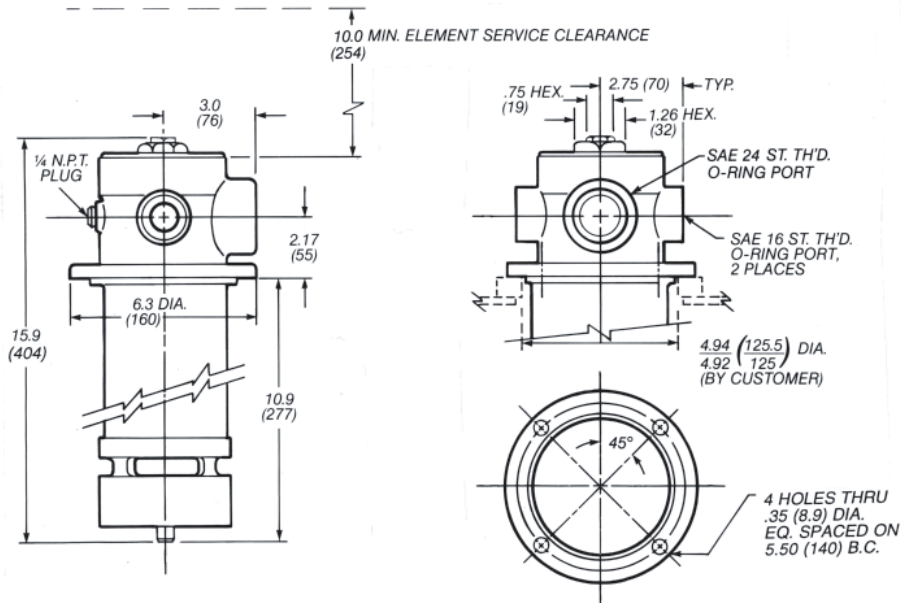
Clean Element Pressure Drop (ΔP) Factors						
Code	FXX	SF10	SF25	SF40	SF60	SF120
ATZ-120	.015	.076	.025	.012	.0076	.0032
ATZ-300	.0074	.037	.012	.0056	.0037	.0016

Element Pressure Drop (ΔP):

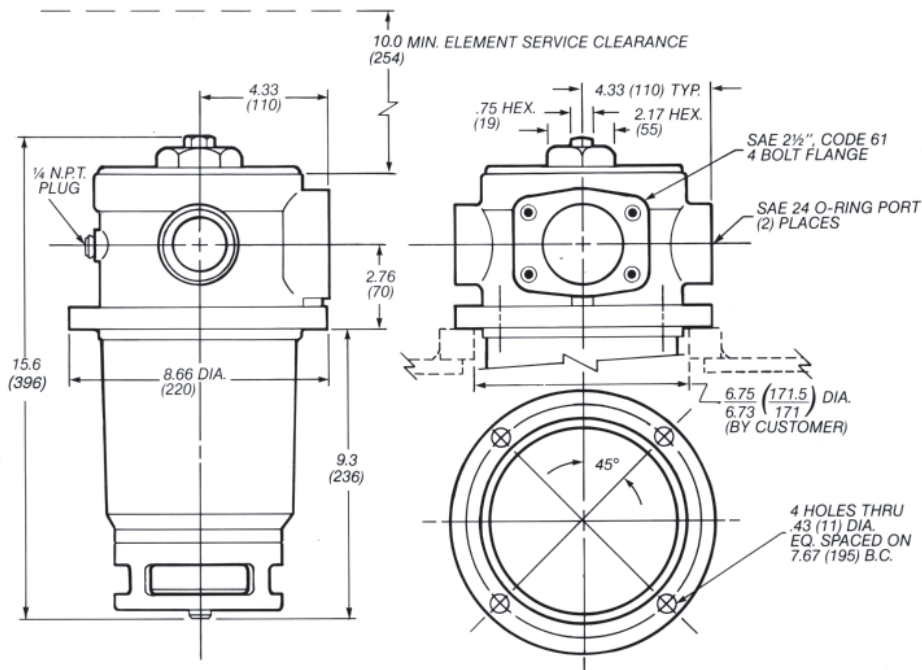
Multiply the actual flow rate times the applicable ΔP factor to determine the pressure drop with 140 SSU fluid viscosity. Correct for a different viscosity by applying the following formula:

Flow Rate (GPM) x (New viscosity in SSU/140 SSU).

Dimensions - ATZ 120

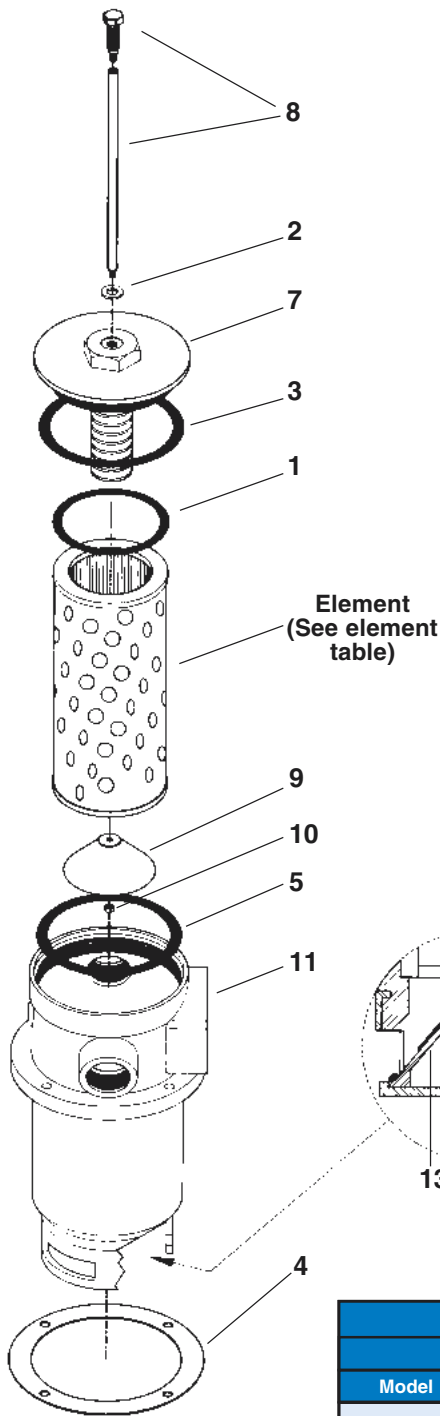


Dimensions - ATZ 300



In Tank Suction Filters

ATZ Series



Seals			
Item	Description	ATZ-120	ATZ-300
1	Element O-Ring	N75704-Buna / V75704-FKM	SOR-66
2	Nylon Gasket	25 x 13 x 2 (3813112 OLD P/N)	
3	Cover O-Ring	SOR-67	SOR-80
4	Tank Gasket	160 x 125 x 2	220 x 170 x 2
5	Element O-Ring	R-174	SOR-75
6	Valve O-Ring	SOR-27	SOR-32
	Material*	Nitrile or FKM	

*Please specify seal material suffix when ordering fluorocarbon seals: "-V".

Item	Description	Material	ATZ-120	ATZ-300
			Part Number	Part Number
7	Cover	Cast Steel	84.21.051.16	5842127
8	Shaft Assy	Steel	814304221	814304222
9	Valve Cone	Steel	842701601	842701611
10	Lock Nut (m6)	Steel	6812906	6812906
11	Housing Assy	Cast Aluminum	-	-
12	Valve Housing	Cast Aluminum	-	-
13	Check Valve	Cast Aluminum	-	-
14	Spring	Steel	-	-

Element Codes						
Model	Disposable	Cleanable				
	FXX Series	SF Series Stainless Steel Mesh*				
	10 Micron Nominal Beta ₁₀ ≥ 2	10 Micron Absolute	25 Micron Absolute	40 Micron Absolute	60 Micron Absolute	120 Micron Absolute
ATZ-120	FXX1-R-10	SF1-R-10	SF1-R-25	SF1-R-40	SF1-R-60	SF1-R-120
ATZ-300	FXX3-10	SF3-10	SF3-25	SF3-40	SF3-60	SF3-120
Material*	Cellulose Fiber, Epoxy End Cap Adhesive	Stainless Steel Mesh, Epoxy End Cap Adhesive				

*All End Caps and Support Tubes are Plated Carbon Steel

HOW TO ORDER:

Select the desired symbol (in the correct position) to construct a model code.

Assembly Example:

BOX 1	BOX 2	BOX 3	BOX 4	BOX 5
ATZ-300	S24	FXX3-10	B	H

Replacement

Element Example:

BOX 3
FXX3-10

BOX 1 : MODEL	
Symbol	Description
ATZ-120	FULL FLOW 32 GPM (120 l/min)
ATZ-300	80 GPM (300 l/min)

BOX 3 : ELEMENT							
Model	Symbol	10µ Nom. $\beta_{10} > 2$	10 Micron St. Steel	25 Micron St. Steel	40 Micron St. Steel	60 Micron St. Steel	120 Micron St. Steel
ATZ-120	FXX1-R-10	SF1-R-10	SF1-R-25	SF1-R-40	SF1-R-60	SF1-R-120	
ATZ-300	FXX3-10	SF3-10	SF3-25	SF3-40	SF3-60	SF3-120	

BOX 2 : PORTS	
Symbol	Description
S16	ATZ-120 2 x SAE-16 (1 1/16"-12) 1 x SAE-24 (1 5/16"-12)
S24	ATZ-300 2 x SAE-24 (1 5/16"-12) 1 x 2½ SAE Code 61 Flange

BOX 4 : SEALS	
Symbol	Description
B	Nitrile (Buna)
V	Fluorocarbon (FKM)

BOX 5 : INDICATOR	
Symbol	Description
H	Vacuum Gauge (300023)
T	Vacuum Switch (NV-1C-5R/EL)
OMIT	If not required

Please note the bolded options reflect standard options with a reduced lead-time. Consult factory on all other lead-time options.