



Quality
Endorsed
Company

A

ISO 9002 Lic. 3765
Standards Australia



Bell Housings & Couplings

**Quality and Service
worldwide**

STAUFF

Walter Stauffenberg GmbH & Co. KG

P.O.Box 1745 · D-58777 Werdohl
Im Ehrenfeld 4 · D-58791 Werdohl
Tel. : + 49 (0) 2392 916-0
Fax: + 49 (0) 2392 2505
e-mail: sales@stauff.com
Internet: http://www.stauff.com

Oil Solutions

PO Box 653 Castlemaine 3450
Phone 0421 336 009
Fax 03 9012 4332
sales@oilsolutions.com.au
www.oilsolutions.com.au

Australia:

Stauff Corporation (Pty.) Ltd.
P.O. Box 227
24-26 Doyle Avenue, Unanderra
Wollongong, N.S.W.
AUS-2526 Unanderra
Tel. : + 61 2 42 71 18 77
Fax: + 61 2 42 71 84 32

Brazil:

Stauff Brasil Ltda.
Avenida Gupe 10.767
Galpa" o 2, Bloco A
WT – Empresarial Parque Castello Branco
BRA-Barueri – SP
CEP: 06422-120
Tel: +55 1147899020
Fax: +55 1147899021

China:

Stauff International Trading (Shanghai) Co., Ltd.
Shangdian Mansion, Pudong
331, Binzhou Road
CHN-200126 Shanghai
Tel. : + 86 21 58 45 65 60
Fax: + 86 21 58 45 66 80

France:

Stauff s.a.
230, Avenue du Grain d'Or
Z.I. de Vineuil-Blois Sud
F-41354 Vineuil-cedex
Tel. : + 33 2 54 50 55 50
Fax: + 33 2 54 42 29 19

India:

Stauff India Pvt. Ltd.
Gat. No. 2340
Pune-Nagar Road, Wagholi
IND-Pune - 412207
Tel. : + 91 20 705 19 90
Fax: + 91 20 705 19 89

Italy:

Stauff Italia s.r.l.
Via Pola 21/23
I-20034 Birone di Giussano
Tel. : + 39 0362 31 21 13
Fax: + 39 0362 33 55 36

Japan:

Ohtsuka Tec. Co. Ltd.
1-7-19 Minami Shinagawa
Shinagawa-Ku
JPN-Tokyo 140
Tel. : + 81 3 34 72 12 01
Fax: + 81 3 34 72 12 09

Canada:

Stauff Canada Ltd.
866 Milner Avenue
CAN-Scarborough, Ontario M1B 5N7
Tel. : + 1 416 282 46 08
Fax: + 1 416 282 30 39

USA:

Stauff Corporation
7 Wm. Demarest Place
USA-Waldwick, N.J. - 07463
Tel. : + 1 201 444 78 00
Fax: + 1 201 444 78 52

United Kingdom:

Stauff UK
332, Coleford Road
Darnall
GBR-Sheffield, S 9 5 P H
Tel. : + 44 1142 518 518
Fax: + 44 1142 518 519

Stauff Hydraulic Accessories

- ◆ **Breathers**
- ◆ **Diffusers**
- ◆ **Flow Indicators**
- ◆ **Level Gauges**
- ◆ **Pressure Gauges**
- ◆ **Spin On Filters**
- ◆ **Suction Strainers**
- ◆ **Valves**

The STAUFF hydraulic accessories program has been carefully designed to offer a range of components suited to the demands of building hydraulic systems in most industrial and mobile applications.

Whether you require simple filler breathers or precise electrical level switches, flow control valves or complete filter units; the STAUFF accessories range should provide you with the choice you need.

At Stauff we are aware of the ongoing development and innovation within the hydraulic industry. We strive to keep up with and further develop the latest technology and to bring the benefit of any such improvements directly to the customer.

Additionally we are always prepared to consider custom built products, if you have a special need.

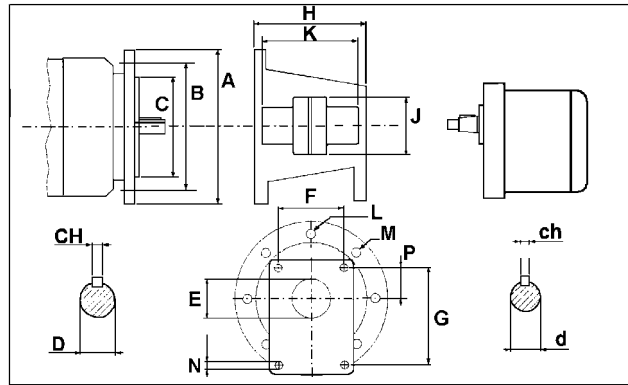
We ensure that your most urgent requirements are met by keeping a large and comprehensive stock in Australia

These products are subject at all times to our DIN ISO 9001 Quality Management Systems.

DIMENSIONAL DATA for 4 - BOLT METRIC PUMPS

Stauff Bell Housings and Couplings are designed to connect pumps to electric motors, B5 standard. There are two series available, the first to suit metric, 4-bolt mount, pumps from Group 0.5 to Group 3 and the second to suit SAE, 2-bolt mount, pumps from Group AA to Group C. The coupling halves are pre-bored and keyed to suit standard motor and pump shafts. The complete coupling comprises the pump hub, the motor hub and the rubber spider.

Bell housing selection is related to the "frame size" of the drive motor and the pump group designation. Selection of the bell housing and the coupling set can be simply read from the tables on page 4.



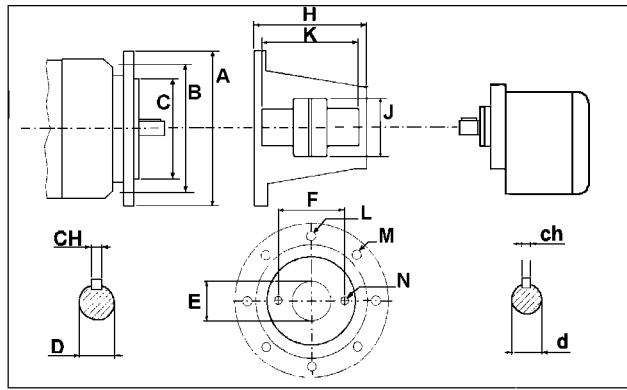
METRIC 4 - BOLT PUMP MOUNT BELL HOUSING

PART No.	A	B	C	E	F	G	H	L	M	N	P
SBH63-05	140	115	95	22	-	66	60	10	M8	M6	25.5
SBH71-05	160	130	110	22	-	66	70	10	M8	M6	25.5
SBH71-1	160	130	110	25.4	52	72	70	10	M8	M6	26.2
SBH80-1	200	165	130	25.4	52	72	95	12	M10	M6	26.2
SBH80-2	200	165	130	36.5	71.5	96	95	12	M10	M8	32.5
SBH100-1	250	215	180	25.4	52	72	105	14	M12	M6	26.2
SBH100-2	250	215	180	36.5	71.5	96	105	14	M12	M8	32.5
SBH100-2L	250	215	180	36.5	71.5	96	115	14	M12	M8	32.5
SBH100-3	250	215	180	50.8	98.5	128	115	14	M12	M10	42
SBH132-2	300	265	230	36.5	71.5	96	143	14	M12	M8	32.5
SBH132-3	300	265	230	50.8	98.5	128	143	14	M12	M10	42
SBH160-2	350	300	250	36.5	71.5	96	178	18	M16	M8	32.5
SBH160-3	350	300	250	50.8	98.5	128	178	18	M16	M10	42
SBH200-3	400	350	300	50.8	98.5	128	188	18	M16	M10	42

DRIVE COUPLING SETS – 1 : 8 TAPERED SHAFT PUMPS

Frame Size	Motor Hub	Pump Hub	Spider	K	J	D	CH	d	ch
D63	SMH48-11	SPH486-05	SS-48	54	48	11	4	6	2.0
D71	SMH48-14	SPH486-05	SS-48	64	48	14	5	6	2.0
D71	SMH48-14	SPH48-T1	SS-48	62	48	14	5	9.7	2.4
D80	SMH48-19	SPH48-T1	SS-48	87	48	19	6	9.7	2.4
D80	SMH65-19	SPH65-T2	SS-65	87	65	19	6	17.2	3.2/4.0
D90	SMH65-24	SPH65-T1	SS-65	87	65	24	8	9.7	2.4
D90	SMH65-24	SPH65-T2	SS-65	87	65	24	8	17.2	3.2/4.0
D100/112	SMH65-28	SPH65-T1	SS-65	97	65	28	8	9.7	2.4
D100/112	SMH65-28	SPH65-T2	SS-65	97	65	28	8	17.2	3.2/4.0
D100/112	SMH86-28	SPH86-T2	SS-86	107	86	28	8	17.2	3.2/4.0
D100/112	SMH86-28	SPH86-T3	SS-86	107	86	28	8	22.2	4.0
D132	SMH86-38	SPH86-T2	SS-86	135	86	38	10	17.2	3.2/4.0
D132	SMH86-38	SPH86-T3	SS-86	135	86	38	10	22.2	4.0
D160	SMH108-42	SPH108-T2	SS-108	168	108	42	12	17.2	3.2/4.0
D160	SMH108-42	SPH108-T3	SS-108	168	108	42	12	22.2	4.0
D180	SMH108-48	SPH108-T2	SS-108	168	108	48	14	17.2	3.2/4.0
D180	SMH108-48	SPH108-T3	SS-108	168	108	48	14	22.2	4.0
D200	SMH108-55	SPH108-T3L	SS-108	176	108	55	16	22.2	4.0

DIMENSIONAL DATA for 2 - BOLT SAE FLANGED PUMPS



Material Specifications

Bell Housing Diecast aluminium alloy
 Coupling Diecast aluminium alloy
 Spider Acryl-nitrile-buna 75 Shore A
 Temperature - 30° to + 80°C

Drive Coupling Max. kW load at 1440 rpm
 (with electric motor at constant load)

Series 48 coupling 1.5 kW

Series 65 coupling 4.5 kW

Series 86 coupling 12.0 kW

Series 108 coupling 33.0 kW

Max. angular mis-alignment 2°

SAE 2 - BOLT PUMP MOUNT BELL HOUSINGS

Part No.	A	B	C	E	F	H	L	M	N
SBH80-AA	200	165	130	50.8	82.5	95	12	M10	M8
SBH100-AA	250	215	180	50.8	82.5	112	14	M12	M8
SBH80-A	200	165	130	82.5	106	126	12	M10	M10
SBH80-B	200	165	130	101.6	146	130	12	M10	M12
SBH100-A	250	215	180	82.5	106	136	14	M12	M10
SBH100-B	250	215	180	101.6	146	136	14	M12	M12
SBH132-A	300	265	230	82.5	106	170	14	M12	M10
SBH132-B	300	265	230	101.6	146	170	14	M12	M12
SBH132-C	300	265	230	127	181	170	14	M12	M16
SBH160-A	350	300	250	82.5	106	195	18	M16	M10
SBH160-B	350	300	250	101.6	146	195	18	M16	M12
SBH160-C	350	300	250	127	181	195	18	M16	M16
SBH200-B	400	350	300	101.6	146	206	18	M16	M12
SBH200-C	400	350	300	127	181	206	18	M16	M16

DRIVE COUPLING SETS – PARALLEL SHAFT PUMPS

Frame Size	Motor Hub	Pump Hub	Spider	K	J	D	CH	d	ch
D80	SMH48-19	SPH48-12AA	SS-48	90	48	19	6	12.7	3.18
D90	SMH48-24	SPH48-12AA	SS-48	90	48	24	8	12.7	3.18
D100/112	SMH65-28	SPH65-12AA	SS-65	97	65	28	8	12.7	3.18
D80	SMH65-19	SPH65-34A	SS-65	115.5	65	19	6	19.05	4.76
D80	SMH65-19	SPH65-78B	SS-65	115.5	65	19	6	22.22	4.76
D90	SMH65-24	SPH65-34A	SS-65	115.5	65	24	8	19.05	4.76
D90	SMH65-24	SPH65-78B	SS-65	115.5	65	24	8	22.22	4.76
D100/112	SMH86-28	SPH86-34A	SS-86	128	86	28	8	19.05	4.76
D110/112	SMH86-28	SPH86-78B	SS-86	128	86	28	8	22.22	4.76
D132	SMH86-38	SPH86-34A	SS-86	156	86	38	10	19.05	4.76
D132	SMH86-38	SPH86-78B	SS-86	156	86	38	10	22.22	4.76
D132	SMH86-38	SPH86-114C	SS-86	156	86	38	10	31.75	6.35
D160	SMH108-42	SPH108-34A	SS-108	182	108	42	12	19.05	4.76
D160	SMH108-42	SPH108-78B	SS-108	182	108	42	12	22.22	4.76
D160	SMH108-42	SPH108-114C	SS-108	182	108	42	12	31.75	6.35
D180	SMH108-48	SPH108-78B	SS-108	182	108	48	14	22.22	4.76
D180	SMH108-48	SPH108-114C	SS-108	182	108	48	14	31.75	6.35
D200	SMH108-55	SPH108-78B	SS-108	182	108	55	16	22.22	4.76
D200	SMH108-55	SPH108-114C	SS-108	182	108	55	16	31.75	6.35

COMPONENT SELECTION TABLES

METRIC RECTANGULAR – 4 BOLT PUMP MOUNT

Frame Size	kW / Hp	Pump Grp.	Bell Housing	Motor Hub	Pump Hub	Spider
D63	0.18/0.25	0.5	SBH63-05	SMH48-11	SPH486-05	SS-48
D71	0.37/0.5	0.5	SBH71-05	SMH48-14	SPH486-05	SS-48
D71	0.37/0.5	1	SBH71-1	SMH48-14	SPH48-T1	SS-48
D80	0.75/1.0	1	SBH80-1	SMH48-19	SPH48-T1	SS-48
D80	0.75/1.0	2	SPH80-2	SMH65-19	SPH65-T2	SS-65
D90	1.5/2.0	1	# SBH80-1	SMH65-24	SPH65-T1	SS-65
D90	1.5/2.0	2	# SBH80-2	SMH65-24	SPH65-T2	SS-65
D100/112	4.0/5.5	1	SBH100-1	SMH65-28	SPH65-T1	SS-65
D100/112	4.0/5.5	2	SBH100-2	SMH65-28	SPH65-T2	SS-65
D100/112	4.0/5.5	2	## SBH100-2L	SMH86-28	SPH86-T2	SS-86
D100/112	4.0/5.5	3	SBH100-3	SMH86-28	SPH86-T3	SS-86
D132	9.0/12.5	2	SBH132-2	SMH86-38	SPH86-T2	SS-86
D132	9.0/12.5	3	SBH132-3	SMH86-38	SPH86-T3	SS-86
D160	15.0/20.0	2	SBH160-2	SMH108-42	SPH108-T2	SS-108
D160	15.0/20.0	3	SBH160-3	SMH108-42	SPH108-T3	SS-108
D180	22.0/30.0	2	++ SBH160-2	SMH108-48	SPH108-T2	SS-108
D180	22.0/30.0	3	++ SBH160-3	SMH108-48	SPH108-T3	SS-108
D200	30.0/40.0	3	SBH200-3	SMH108-55	SPH108-T3L	SS-108



SBH80-1 & -2 housings are common to D90 frame motors.
 ## Optional selection for D100 / 112 Group 2 pumps with larger 86 series coupling set and longer housing.
 ++ SBH160-2 & -3 housings common to D180 frame motors.

SAE SERIES FLANGE – 2 BOLT PUMP MOUNT

Frame Size	kW / Hp	Pump Grp.	Bell Housing	Motor Hub	Pump Hub	Spider
D80	0.75/1.0	AA	SBH80-AA	SMH48-19	SPH48-12AA	SS-48
D90	1.5/2.0	AA	SBH80-AA	SMH48-24	SPH48-12AA	SS-48
D100/112	4.0/5.5	AA	SBH100-AA	SMH65-28	SPH65-12AA	SS-65
D80	0.75/1.0	A	SBH80-A	SMH65-19	SPH65-34A	SS-65
D80	0.75/1.0	B	SBH80-B	SMH65-19	SPH65-78B	SS-65
D90	1.5/2.0	A	# SBH80-A	SMH65-24	SPH65-34A	SS-65
D90	1.5/2.0	B	# SBH80-B	SMH65-24	SPH65-78B	SS-65
D100/112	4.0/5.5	A	SBH100-A	SMH86-28	SPH86-34A	SS-86
D100/112	4.0/5.5	B	SBH100-B	SMH86-28	SPH86-78B	SS-86
D132	9.0/12.5	A	SBH132-A	SMH86-38	SPH86-34A	SS-86
D132	9.0/12.5	B	SBH132-B	SMH86-38	SPH86-78B	SS-86
D132	9.0/12.5	C	SBH132-C	SMH86-38	SPH86-114C	SS-86
D160	15.0/20.0	A	SBH160-A	SMH108-42	SPH108-34A	SS-108
D160	15.0/20.0	B	SBH160-B	SMH108-42	SPH108-78B	SS-108
D160	15.0/20.0	C	SBH160-C	SMH108-42	SPH108-114C	SS-108
D180	22.0/30.0	B	## SBH160-B	SMH108-48	SPH108-78B	SS-108
D180	22.0/30.0	C	## SBH160-C	SMH108-48	SPH108-114C	SS-108
D200	30.0/40.0	B	SBH200-B	SMH108-55	SPH108-78B	SS-108
D200	30.0/40.0	C	SBH200-C	SMH108-55	SPH108-114C	SS-108



SBH80-A & -B housings common to D90 frame motors.
 ## SBH160-B & -C housings common to D180 frame motors.

STAUFF CORPORATION PTY LTD

Web site: www.stauff.com

E-mail: sales@stauff.com.au

HEAD OFFICE

24-26 Doyle Ave.
 UNANDERRA
 NSW 2526
 Tel. (02) 4271 1877
 Fax.(02) 4271 8432

ADELAIDE

1/3 Endeavour Dve.
 PORT ADELAIDE
 SA 5015
 Tel. (08) 8341 2260
 Fax.(08) 8341 1604

BRISBANE

463 Boundary Rd.
 RICHLANDS
 QLD 4077
 Tel. (07) 3217 0444
 Fax.(07) 3217 0300

MELBOURNE

3B 14-16 White St.
 OAKLEIGH EAST
 VIC 3166
 Tel. (03) 9543 5411
 Fax.(03) 9543 5422

SYDNEY

27B Davis Rd.
 WETHERILL PARK
 NSW 2164
 Tel. (02) 9725 2733
 Fax.(02) 9725 2744