



Valves

Local solutions for
individual customers
worldwide



Distributor

Walter Stauffenberg GmbH & Co. KG

P.O.Box 1745 · D-58777 Werdohl
Im Ehrenfeld 4 · D-58791 Werdohl
Tel. : + 49 (0) 2392 916-0
Fax: + 49 (0) 2392 2505
e-mail: sales@stauff.com
Internet: http://www.stauff.com

Oil Solutions

PO Box 653 Castlemaine 3450
Phone 0421 336 009
Fax 03 9012 4332
sales@oilsolutions.com.au
www.oilsolutions.com.au

Australia:

Stauff Corporation (Pty.) Ltd.
P.O. Box 227
24-26 Doyle Avenue, Unanderra
Wollongong, N.S.W.
AUS-2526 Unanderra
Tel. : + 61 2 42 71 18 77
Fax: + 61 2 42 71 84 32

Brazil:

Stauff Brasil Ltda.
Avenida Gupe 10.767
Galpa" o 2, Bloco A
WT - Empresarial Parque Castello Branco
BRA-Barueri - SP
CEP: 06422-120
Tel: +55 1147899020
Fax: +55 1147899021

China:

Stauff International Trading (Shanghai) Co., Ltd.
Shangdian Mansion, Pudong
331, Binzhou Road
CHN-200126 Shanghai
Tel. : + 86 21 58 45 65 60
Fax: + 86 21 58 45 66 80

France:

Stauff s.a.
230, Avenue du Grain d'Or
Z.I. de Vineuil-Blois Sud
F-41354 Vineuil-cedex
Tel. : + 33 2 54 50 55 50
Fax: + 33 2 54 42 29 19

India:

Stauff India Pvt. Ltd.
Gat. No. 2340
Pune-Nagar Road, Wagholi
IND-Pune - 412207
Tel. : + 91 20 705 19 90
Fax: + 91 20 705 19 89

Italy:

Stauff Italia s.r.l.
Via Pola 21/23
I-20034 Birone di Giussano
Tel. : + 39 0362 31 21 13
Fax: + 39 0362 33 55 36

Japan:

Ohtsuka Tec. Co. Ltd.
1-7-19 Minami Shinagawa
Shinagawa-Ku
JPN-Tokyo 140
Tel. : + 81 3 34 72 12 01
Fax: + 81 3 34 72 12 09

Canada:

Stauff Canada Ltd.
866 Milner Avenue
CAN-Scarborough, Ontario M1B 5N7
Tel. : + 1 416 282 46 08
Fax: + 1 416 282 30 39

USA:

Stauff Corporation
7 Wm. Demarest Place
USA-Waldwick, N.J. - 07463
Tel. : + 1 201 444 78 00
Fax: + 1 201 444 78 52

United Kingdom:

Stauff UK
332, Coleford Road
Darnall
GBR-Sheffield, S 9 5 P H
Tel. : + 44 1142 518 518
Fax: + 44 1142 518 519

Valves

High Pressure Hydraulic Ball Valves

Two-Way Valves

Medium Duty Valves

High Pressure Valve Adaptors

Three-Way Valves

Four Way Valves

Valve Locking Device Options

Low Pressure Valves

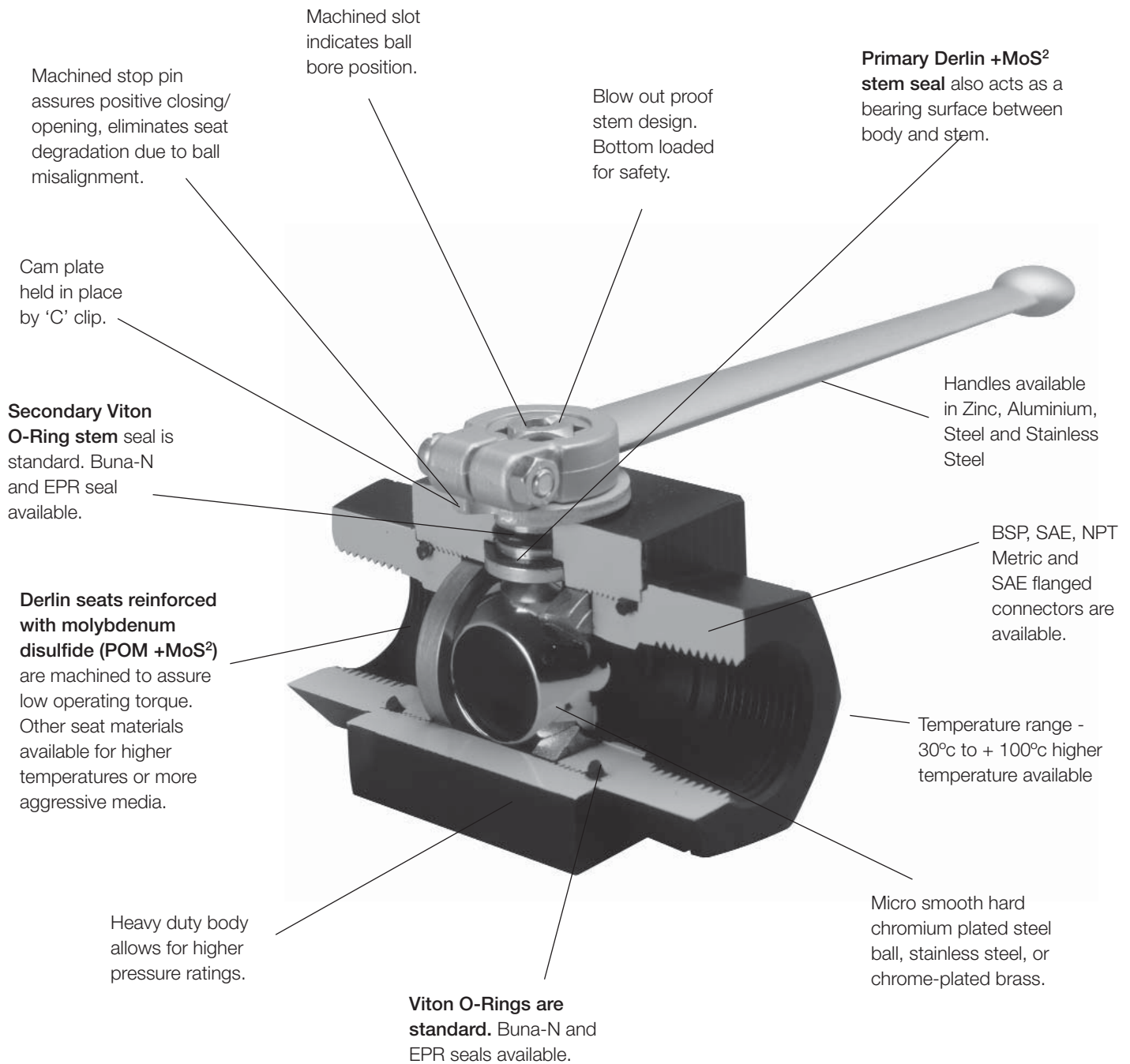
Check Valves

Needle Valves

Flow Control Valves

Pressure Compensated Flow Control Valves

Stauff Ball Valves, full flow and positive shut-off up to 800 BAR



Features

- Available in carbon, stainless steel or brass.
- 1/4 turn positive operation.
- Depending on size and materials, working pressures up to 800 Bar and temperatures up to 500°C can be accommodated.
- No lubrication or maintenance required for the life of the valve.
- All Stauff valves are easily and completely repairable.
- All Stauff valves offer completely bidirectional operation, eliminating any chance of incorrect installation.
- No threads in fluid service to contaminate flow or cause turbulence.
- “Floating Ball” design insures a positive, leak-free seal and automatically compensates for any seat wear or misalignment.
- Hard chromium plated micro-smooth ball greatly reduces friction and seat wear.
- Ball seats are available in a variety of materials to suit your special applications.
- Full size ports on most two-way valves virtually eliminates pressure drop. Cv factor is usually equal to a length of pipe the same length and diameter as the valve.
- All Stauff valves are proof tested to 1.5 times the maximum rated working pressure before shipment from manufacturing facilities.
- Burst pressure tests is a minimum of 2.4 times the nominal pressure PN
- Long seal life.

Available Options

- pressure relief option
- Locking or detent type handles
- Pneumatic or electric actuator
- Special service seat and seal combinations
- Panel mounted valves
- Tandem mounted valves
- Special threads and connections
- Custom design valves
- Limit/proximity switches

Contact **STAUFF** for special requirements.

Applications

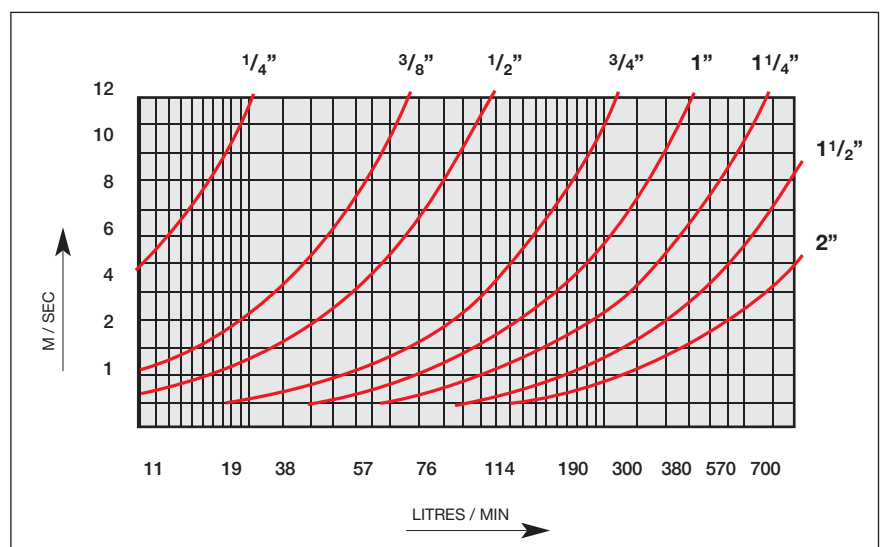
- Industrial Hydraulics
- Mobile Hydraulics
- Marine Hydraulics
- Mining Industry
- General Light Industry

Special Applications

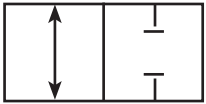
- Gas Industry
- Paint and Lacquer Industry
- Foam Industry
- Fire Safe Approved

Note: Stauff ball valves are designed for use as on/off devices and must not be used to throttle fluidflow. Use in any position other than fully open or fully closed can lead to rapid deterioration of valve components and possible product failure. When operated from the fully closed position at rated operating pressure, manual operation may prove difficult due to opening torque requirements. Please consult factory prior to field application.

Valve Selection Chart



High Pressure 2-Way Ball Valves



BSPP Series

Thread	Body Type	Size	Part Number	Pressure Rating
G1/8"	block	DN4	BKHG1/8-1125	500 bar
G1/4"	block	DN6	BKHG1/4-1125	500 bar
G3/8"	block	DN10	BKHG3/8-1125	500 bar
G1/2"	block	DN13	BKHG1/2-1125	500 bar
G3/4"	block	DN20	BKHG3/4-1125	315 bar
G1"	block	DN25	BKHG1-1125	315 bar
G1 1/4"	block	DN25/32	BKHG11/4-1125	315 bar
G1 1/2"	block	DN25/40	BKHG11/2-1125	315 bar
G1 1/4"	forged	DN32	MKHG11/4-2125	350 bar
G1 1/2"	forged	DN40	MKHG11/2-2125	350 bar
G2"	forged	DN50	MKHG2-2125	350 bar

Valves with mounting holes or venting port available on request

NPT Series

Thread	Body Type	Size	Part Number	Pressure Rating
1/4"NPT	block	DN6	BKH1/4NPT-1125	500 bar
3/8"NPT	block	DN10	BKH3/8NPT-1125	500 bar
1/2"NPT	block	DN13	BKH1/2NPT-1125	500 bar
3/4"NPT	block	DN20	BKH3/4NPT-1125	315 bar
1"NPT	block	DN25	BKH1NPT-1125	315 bar
1 1/4"NPT	forged	DN32	MKH11/4NPT-2125	350 bar
1 1/2"NPT	forged	DN40	MKH11/2NPT-2125	350 bar
2"NPT	forged	DN50	MKH2NPT-2125	350 Bar

Metric DIN2353 Heavy Series



Connection	Body Type	Size	Part Number	Pressure Rating
8S	block	DN4	BKH8S-1125	500 bar
10S	block	DN6	BKH10S-1125	500 bar
12S	block	DN8	BKH12S-1125	500 bar
16S	block	DN13	BKH16S-1125	500 bar
20S	block	DN16	BKH20S-1125	400 bar
25S	block	DN20	BKH25S-1125	315 bar
30S	block	DN25	BKH30S-1125	315 bar
38S	forged	DN32	MKH38S-2125	350 bar

'L' Series available on request

2 Way, SAE Forged Body with Split Flange Adaptors Code 61 & 62



Product Code	Body Type	Size	SAE Size	Pressure Rating
BKHSAEFS210/13-1125	block	DN13	1/2" Code 61	210
BKHSAEFS210/20-1125	block	DN20	3/4" Code 61	210
BKHSAEFS210/25-1125	block	DN25	1" Code 61	210
MKHSAEFS210/32-2128	forged	DN32	1.1/4" Code 61	210
MKHSAEFS210/40-2128	forged	DN40	1.1/2" Code 61	210
MKHSAEFS210/50-2128	forged	DN50	2" Code 61	210
BKHSAEFS420/20-1125	block	DN20	3/4" Code 62	315
BKHSAEFS420/25-1125	block	DN25	1" Code 62	315
MKHSAEFS420/32-2128	forged	DN32	1.1/4" Code 62	350
MKHSAEFS420/40-2128	forged	DN40	1.1/2" Code 62	350
MKHSAEFS420/50-2128	forged	DN50	2" Code 62	350

SAE flange clamps sold separately

Manifold Mounted Series



Part Number	Size	Pressure
PKHDN06-1125	DN6	500 bar
PKHDN06/10-1125	DN6/10	500 bar
PKHDN13/16-1125	DN13/16	400 bar
PKHDN20-1125	DN20	315 bar
PKHDN25-1125	DN25	315 bar
PKHDN32-1125	DN32	315 bar
PKHDN40-8125	DN40	315 bar
PKHDN50-8125	DN50	315 bar

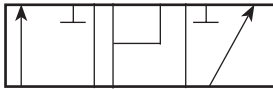
Compact SAE Flanged Series Code 61 & 62



Part Number	Size	Pressure
KHSAE210/20-2125	DN20	210 bar
KHSAE210/25-2125	DN25	210 bar
KHSAE210/32-1125	DN32	210 bar
KHSAE210/40-1125	DN40	210 bar
KHSAE210/50-2125	DN50	210 bar
KHSAE210/65-2125	DN65	210 bar
KHSAE210/80-2125	DN80	210 bar
KHSAE210/100-2125	DN100	210 bar
KHSAE210/125-2125	DN125	210 bar
KHSAE420/15-2128	DN15	420 bar
KHSAE420/20-2128	DN20	420 bar
KHSAE420/25-2128	DN25	420 bar
KHSAE420/32-2128	DN32	420 bar
KHSAE420/40-2128	DN40	420 bar
KHSAE420/50-2125	DN50	420 bar

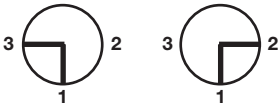
SAE flanges and adaptors sold separately

High Pressure 3-Way Compact Ball Valves



"L" port with open changeover

Pressure inlet at Port No. 1 only



"T" port with 90° stop plate



Note: Pressurise at port 1 only to avoid internal leakage at all ports.

'L' Ported Version

Thread	Size	Part Number	Pressure Rating
G1/4"	DN6	BK3G1/4-1125L	500 bar
G3/8"	DN10	BK3G3/8-1125L	500 bar
G1/2"	DN13	BK3G1/2-1125L	500 bar
G3/4"	DN20	BK3G3/4-8125L	500 bar
G1"	DN25	BK3G1-8125L	315 bar

'T' Ported Version

Thread	Size	Part Number	Pressure Rating
G1/4"	DN6	BK3G1/4-1125T	500 bar
G3/8"	DN10	BK3G3/8-1125T	500 bar
G1/2"	DN13	BK3G1/2-1125T	500 bar
G3/4"	DN20	BK3G3/4-8125T	500 bar
G1"	DN25	BK3G1-8125T	315 bar

Stauff Ball Valves for High Pressure

- Zero Leakage
- High Pressure Capabilities
- Viton Static Seals
- Machined Delrin Seats
- Hard Chrome Plated Steel Balls

High Pressure Multi-way Ball Valves

- Trunnion Mounted Ball (Disc)
- Self compensating seats
- MoS² impregnated Delrin Seats
- Viton seals
- L, T, & X porting standard
- Other portings available on request

3 Way BSPP with 'L' and 'T' ports BSPP Series



'L' Ported Version

Thread	Size	Part Number	Pressure Rating
G1/4"	DN6	3KHG1/4-1125T	500 bar
G3/8"	DN10	3KHG3/8-1125T	500 bar
G1/2"	DN13	3KHG1/2-1125T	400 bar
G3/4"	DN20	3KHG3/4-8125T	315 bar
G1"	DN25	3KHG1-8125T	315 bar

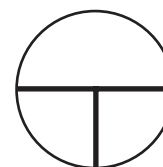
'T' Ported Version

Thread	Size	Part Number	Pressure Rating
G1/4"	DN6	3KHG1/4-1125L	500 bar
G3/8"	DN10	3KHG3/8-1125L	500 bar
G1/2"	DN13	3KHG1/2-1125L	400 bar
G3/4"	DN20	3KHG3/4-8125L	315 bar
G1"	DN25	3KHG1-8125L	315 bar

Standard Portings



"L"



"T"



"X or LL"

continued over...

High Pressure Multi-way Ball Valves... cont

4-Way with 'T' and 'X' ports BSPP Series



'T' Ported Version

Thread	Size	Part No.	Pressure Rating
G1/4"	DN6	4KHG1/4-1125T	500 bar
G3/8"	DN10	4KHG3/8-1125T	500 bar
G1/2"	DN13	4KHG1/2-1125T	400 bar
G3/4"	DN20	4KHG3/4-8125T	315 bar
G1"	DN25	4KHG1-8125T	315 bar

'X' Ported Version

Thread	Size	Part No.	Pressure Rating
G1/4"	DN6	4KHG1/4-1125X	500bar
G3/8"	DN10	4KHG3/8-1125X	500 bar
G1/2"	DN13	4KHG1/2-1125X	400 bar
G3/4"	DN20	4KHG3/4-8125X	315 bar
G1"	DN25	4KHG1-8125X	315 bar

Stainless Steel Ball Valves

- Material - AISI 316Ti
- Seat - MoS² impregnated Delrin
- Stem Seal - Viton & PTFE

Part No.	Size	Pressure Rating
BKHG3/8-4425	3/8"	500 bar
BKHG1/2-4425	1/2"	500 bar
BKHG3/4-4425	3/4"	500 bar
BKHG1-4425	1"	500 bar



Other sizes on request

Accessories for H.P. Ball Valves

- Handles
- Diecast Zinc
- Aluminium
- Steel



Size	Style	Material	Part No.
SW9	Stepped	Zinc	01315533
SW14	Stepped	Zinc	01302729
SW9	Straight	Aluminium	01300052
SW12	Straight	Aluminium	01304077
SW14	Straight	Aluminium	01306745
SW17	Straight	Aluminium	01301799
SW12	Stepped	Aluminium	01301741
SW17	Stepped	Aluminium	01303994
SW9	Stepped	Steel	01300063
SW14	Stepped	Steel	01308618
SW17	Stepped	Steel	01314083

Locking Devices

Simple, easy-to-fit, economical locking device for most ball valves.

Square Shaft Size (mm)	Part No.
9	SW09
10	SW10
12	SW12
14	SW14
17	SW17



*Padlock Not Included

Other types of locking devices available on request

Ball Valve Type	SW	Ball Valve Type	SW
2 WAY 1/8" DN 4	9	MULTI-WAY 3/4"	17
2 WAY 1/4" DN 6	9	MULTI-WAY 1"	17
2 WAY 3/8" DN 10	9	MULTI-WAY 1 1/4"	17
2 WAY 1/2" DN 13	9	MULTI-WAY 1 1/2"	17
2 WAY 3/4" DN 20	14		
2 WAY 1" DN 25	14	MANIFOLD MOUNT DN6/10	9
2 WAY 1 1/4" DN 25/32	14	MANIFOLD MOUNT DN13/16	9
2 WAY 1 1/2" DN 25/40	14	MANIFOLD MOUNT DN 20	14
2 WAY 1 1/4" DN 32	17	MANIFOLD MOUNT DN 25	14
2 WAY 1 1/2" DN 40	17	MANIFOLD MOUNT DN 32	17
2 WAY 2" DN 50	17	MANIFOLD MOUNT DN 40	17
		MANIFOLD MOUNT DN 50	17
SAE CODE 61 OR 62 1/2"	9		
SAE CODE 61 OR 62 3/4"	14	METRIC 2 WAY 8S	9
SAE CODE 61 OR 62 1"	14	METRIC 2 WAY 10S	9L
SAE CODE 61 OR 62 1 1/4"	17	METRIC 2 WAY 12S	9
SAE CODE 61 OR 62 1 1/2"	17	METRIC 2 WAY 16S	9
SAE CODE 61 OR 62 2"	17	METRIC 2 WAY 20S	12
		METRIC 2 WAY 25S	14
MULTI-WAY 1/4"	12	METRIC 2 WAY 30S	14
MULTI-WAY 3/8"	14	METRIC 2 WAY 38S	14
MULTI-WAY 1/2"	14		

Ball Valves for Low Pressure

- Chrome Plated, Bronze Body
- PTFE Seats, Buna N Stem Seal



2-Way BSP Series

Thread	Size	Part No.	Pressure Rating
G1/4"	DN8	BV2LP1/4	30 bar
G3/8"	DN10	BV2LP3/8	30 bar
G1/2"	DN15	BV2LP1/2	30 bar
G3/4"	DN20	BV2LP3/4	30 bar
G1"	DN25	BV2LP1	30 bar
G1 1/4"	DN32	BV2LP11/4	25 bar
G1 1/2"	DN40	BV2LP11/2	25 bar
G2"	DN50	BV2LP2	25 bar
G2 1/2"	DN65	BV2LP21/2	16 bar
G3"	DN80	BV2LP3	16 bar

Stainless steel valves on request

3 Way, BSP Series, 'L' and 'T' Ports

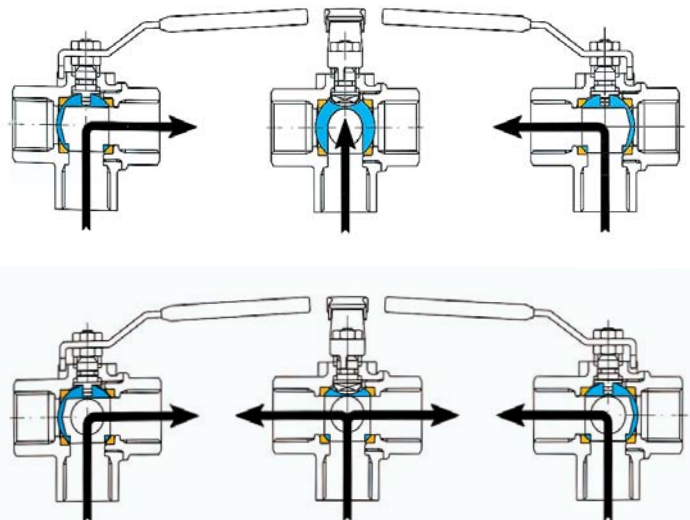


'L' Ported Series

Thread	Size	Part No.	Pressure Rating
1/4"	DN8	BV3LP1/4L	25 bar
3/8"	DN10	BV3LP3/8L	25 bar
1/2"	DN15	BV3LP1/2L	25 bar
3/4"	DN20	BV3LP3/4L	16 bar
1"	DN25	BV3LP1L	16 bar
1 1/4"	DN32	BV3LP11/4L	10 bar
1 1/2"	DN40	BV3LP11/2L	10 bar
2"	DN50	BV3LP2L	10 bar
3"	DN80	BV3LP3L	6 bar

'T' Ported Series

Thread	Size	Part No.	Pressure Rating
G1/4"	DN8	BV3LP1/4T	25 bar
G3/8"	DN10	BV3LP3/8T	25 bar
G1/2"	DN15	BV3LP1/2T	25 bar
G3/4"	DN20	BV3LP3/4T	16 bar
G1"	DN25	BV3LP1T	16 bar
G1 1/4"	DN32	BV3LP11/4T	10 bar
G1 1/2"	DN40	BV3LP11/2T	10 bar
G2"	DN50	BV3LP2T	10 bar
G3"	DN80	BV3L3T	6 bar



Options available for Stauff Ball Valves

The standard range of ball valves are compatible with the normal hydraulic fluids used in industry. For specific applications, it may be necessary to utilise different seals or body materials. Other body materials such as stainless steel are available on request and alternative seals and seat materials are also available.

In addition, a wide selection of portings is available in the multi-way types and in the manifold mounted type, 3-way versions are available.

For specific applications or requirements or for detailed dimensions of valves, contact your local Stauff Office.