

Oil Solutions



Hydraulic Tester

FTM400R for Mining

www.oilsolutions.com.au

**Local solutions for
individual customers
worldwide**

STAUFF

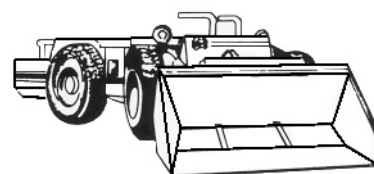
Bi - Directional In Line HYDRAULIC TESTER Model: FTM400R

Find faults, check performance,
save hours of guess-work,
slash down time

CAPACITIES:
378 LPM (100 US GPM)
420 Bar (6000 PSI)



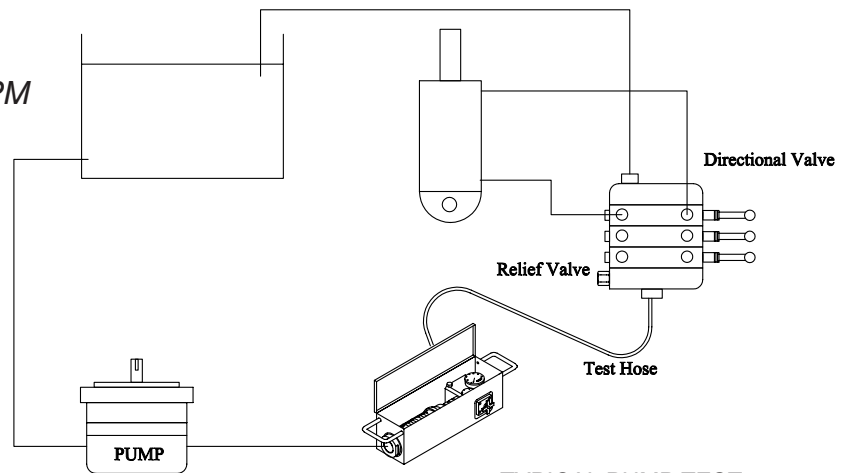
- **ACCURATE** better than $\pm 4\%$ of scale
- **BI-DIRECTIONAL** For unrestricted connection and simplified testing
- **LOADING VALVE** Smooth control of pressure in both directions
- **SAFE** Does not contain aluminium; suitable for underground use
- **SAFE** Does not contain electrical / electronic circuits
- **SAFE** Internal oil bypass protects system, tester and operator
- **FAST** Checks of pumps, valves, motors, cylinders etc.



FTM400R PORTABLE HYDRAULIC TESTER

SPECIFICATION

<i>Flow range:</i>	30-378 LPM 10-100 US GPM
<i>Pressure range:</i>	0-420 Bar 0-6000 PSI
<i>Temperature Range:</i>	0-116°C 0-240°F



CONNECTIONS

<i>Inlet port:</i>	1¼" BSPP Female
<i>Outlet port:</i>	1" BSPP Female

CONSTRUCTION

<i>Flow indicator:</i>	303 Grade Stainless Steel
<i>Loading valve housing:</i>	65-45-12 Grade Carbon Steel
<i>Case:</i>	16 SWG Galvanized Steel Sheet
<i>Seals:</i>	Viton Seals compatible with mineral oils and water emulsions are fitted as standard
<i>Internal Safety Discs:</i>	Fitted safety discs relieve at 430 Bar (6200 PSI) into low pressure line A range of discs with lower pressure ratings is available Consult Sales Office

<i>Accuracy:</i>	<u>Flow Ranges</u> ± 2.5% between 146-260 LPM (centre range) and ± 4% between 30-145 LPM (bottom range) and 261-378 LPM (upper range) Calibration fluid DTE25 at 43°C (110°F)
------------------	--

Temperature Ranges

± 1% of scale range

Pressure Ranges

± 1.6% of scale range

<i>Dimensions/mass:</i>	Size: 150 x 130 x 400 (6" x 5 3/16" x 15 3/4") Mass: 12kg (26.4 lbs)
-------------------------	---