



ATLANTIC
Fluid Tech



OIL SOLUTIONS

**PO Box 38
Strathfieldsaye, VIC, 3551
1800 OIL SOL
1800 645 765**

sales@oilsolutions.com.au

www.oilsolutions.com.au

"For All Your Hydraulic Needs"

**SECTION
13**

**Flow Control
Valves**

SECTION 13



FLOW CONTROL VALVES

Hydraulic scheme	Valve description	Valve type	Rated flow (l/min)	Max. pressure (bar)	Installation	Main port size or cavity type	Page
	CFFN-015-MFSR	Disk type, double mounting	15	350	Insert	G 1/4"	13.01.010
	CFFN-030-MFSR	Disk type, double mounting	30	350	Insert	G 3/8"	13.01.020
	CFFN-070-MFSR	Disk type, double mounting	70	350	Insert	G 1/2"	13.01.030
	CDFN-010-PSNC	Poppet type	10	350	Sleeve	G 1/4"	13.02.040
	CFSN-040-MHRR	Not compensated	40	350	Cartridge	SAE-08-2N	13.03.050
	CFSN-040-BHRR	Not compensated	40	350	Cartridge	SAE-08-2N	13.04.060
	CFSN-070-BHRR	Not compensated	70	350	Cartridge	SAE-10-2N	13.04.070
	CFHN-030-MHST	Hose burst valve	29	350	Insert	G 1/4"	13.05.080
	CFHN-050-MHST	Hose burst valve	45	350	Insert	G 3/8"	13.05.080
	CFHN-070-MHST	Hose burst valve	67	350	Insert	G 1/2"	13.05.080
	CFHN-170-MHST	Hose burst valve	169	350	Insert	G 3/4"	13.05.080
	CFHN-230-MHST	Hose burst valve	223	350	Insert	G 1"	13.05.080
	CFST-010-MDST	Two ways compensated	10	350	Insert	G 1/4"	13.06.090
	CFST-025-MDST	Two ways compensated	25	350	Insert	G 3/8"	13.06.090
	CFST-070-MDST	Two ways compensated	67	350	Insert	G 1/2"	13.06.090
	CFST-150-MDST	Two ways compensated	150	350	Insert	G 3/4"	13.06.090
	CFCT-060-MHRR	Three ways combination	60	350	Cartridge	SAE-10-3N	13.07.100
	CFPT-140-MVRR	Three ways combination	140	350	Cartridge	SAE-16-3N	13.08.110
	MFST-030-RVTR-30	Two ways compensated	30	210-350	In line	G 3/8"	13.09.120
	MFST-055-RVTR-55	Two ways compensated	55	210-350	In line	G 1/2"	13.09.130
	MFST-090-RPZR	Two ways compensated	90	210	In line	G 1/2"	13.09.140
	MFST-090-RVTR-90	Two ways compensated	90	210-350	In line	G 3/4"	13.09.150
	MFST-190-RVTR-19	Two ways compensated	190	210-350	In line	G 1"	13.09.160
	MFST-055-VVTR	Two ways compensated with check valve	55	210	In line	G 1/2"	13.10.170
	MFCT-055-RVTR-30	Three ways compensated	55	210-350	In line	G 3/8"	13.11.180
	MFCT-090-RVTR-55	Three ways compensated	90	210-350	In line	G 1/2"	13.11.190
	MFCT-090-RPZR	Three ways compensated	90	210	In line	G 1/2"	13.11.200
	MFCT-150-RVTR-90	Three ways compensated	150	210-350	In line	G 3/4"	13.11.210
	MFCT-280-RVTR-19	Three ways compensated	280	210-350	In line	G 1"	13.11.220
	MFPT-090-RVTR	Pressure compensated, priority flow regulator	90	210	In line	G 1/2"	13.11.230
	MFPT-090-RPZR	Pressure compensated, priority flow regulator	90	210	In line	G 1/2"	13.11.240

SECTION 13



FLOW CONTROL VALVES

Hydraulic scheme	Valve description	Valve type	Rated flow (l/min)	Max. pressure (bar)	Installation	Main port size or cavity type	Page
	MFCT-090-RVTN	Three ways compensated	90	210	In line	G 1/2"	13.11.250
	MFCT-090-VPZR	Three ways compensated with check valve	90	210	In line	G 1/2"	13.12.260
	MFCT-090-LPZR	Three ways compensated with relief valve	90	210	In line	G 1/2"	13.13.270
	MFCT-090-TPZR	Three ways compensated by pass check valve	90	210	In line	G 1/2"	13.14.280
	MFCT-090-MPTR	Three ways with relief valve and electric unloading	90	210	In line	G 1/2"	13.15.290
	MFCT-280-MVTR	Three ways with relief valve and electric unloading	280	210	In line	G 1"	13.16.300
	BPNN-025-LLEU	Solenoid operated valves	25	350	In line	G 1/2"	13.17.310
	MFCT-150-LHTR	Three ways compensated with relief valve	150	210	In line	G 1"	13.18.320
	MFPT-100-RHAR	Pressure compensated, priority flow regulator	100	350	In line	G 1/2"	13.19.330
	MFPT-200-RHAR	Pressure compensated, priority flow regulator	200	350	In line	G 3/4"	13.20.340
	MFPT-300-RHAR	Pressure compensated, priority flow regulator	300	350	In line	G 1"	13.20.350
	MFPT-100-MHAR	Pressure compensated, priority flow regulator	100	350	In line	G 1/2"	13.21.360
	MFPT-200-MHAR	Pressure compensated, priority flow regulator	200	350	In line	G 3/4"	13.21.370
	MFPT-300-MHAR	Pressure compensated, priority flow regulator	300	350	In line	G 1"	13.21.380
	MFPT-400-MHAR	Pressure compensated, priority flow regulator	400	350	In line	G 1" 1/4	13.22.390

SECTION 13

FLOW CONTROL VALVES

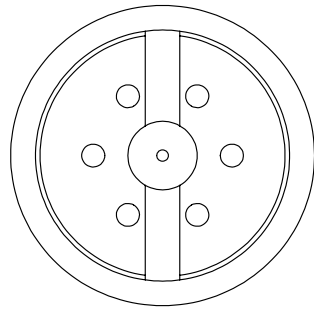
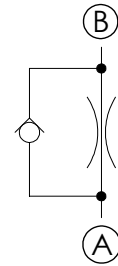
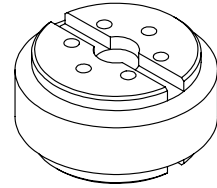
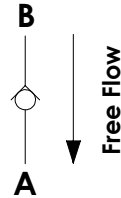
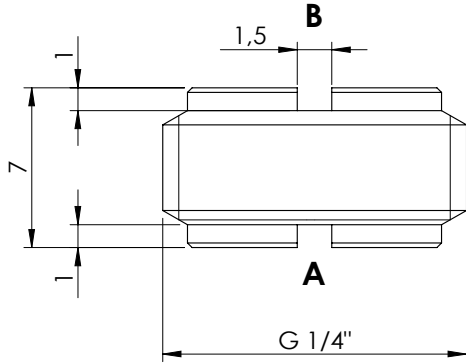


Hydraulic scheme	Valve description	Valve type	Rated flow (l/min)	Max. pressure (bar)	Installation	Main port size or cavity type	Page
	MFTT-100-MHAR	Pressure compensated, priority flow regulator	2x100	350	In line	G 1/2"	13.23.400
	MFTT-200-MHAR	Pressure compensated, priority flow regulator	2x200	350	In line	G 3/4"	13.23.410
	MFTT-300-MHAR	Pressure compensated, priority flow regulator	2x300	350	In line	G 1"	13.23.420
	MFCZ-040-LSLR	Proportional valve, compensated	40	210	In line	G 3/8"	13.24.430
	MFCZ-030-LSLR	Proportional valve, compensated	30	210	In line	G 3/8"	13.24.430
	MFCZ-020-LSLR	Proportional valve, compensated	20	210	In line	G 3/8"	13.24.430
	MFPC-140-AMLR	Proportional valve, compensated	90	210	In line	G 1/2"	13.25.440
	MFPC-140-LMLR	Proportional valve, compensated	90	210	In line	G 1/2"	13.26.450
	MFPC-140-TMLR	Proportional valve, compensated	90	210	In line	G 1/2"	13.27.460
	MFPC-200-MMAR	Proportional valve, compensated	200	250	In line	G 3/4"	13.28.470

FLOW CONTROL VALVES

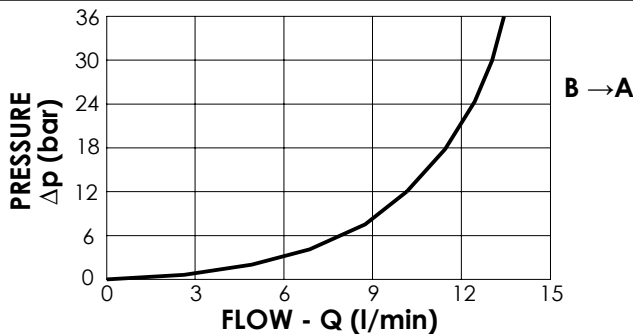
CFFN-015-MFSR

INSERT TYPE
DOUBLE MOUNTING



SPECIFICATIONS

Max. operating pressure:	350 bar
Rated flow:	15 l/min
Cavity:	G 1/4"
Weight:	0,01 kg
Installation torque:	5 Nm



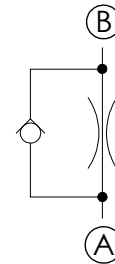
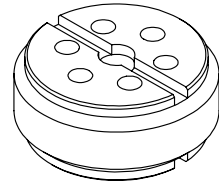
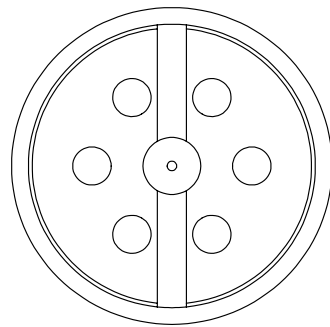
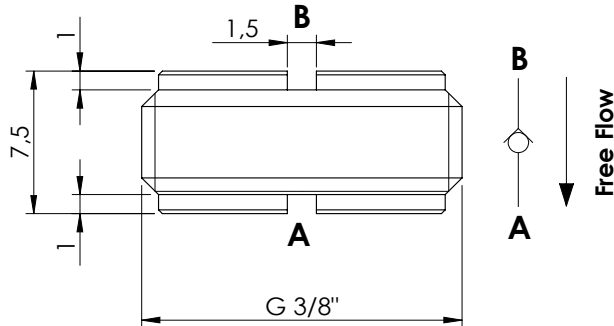
ORDERING CODES

Quick code	Description	Ø Orifice	Quick code	Description	Ø Orifice
CF000118	CFFN-015-MFSR-05-G14-N350	0,5	CF000205	CFFN-015-MFSR-13-G14-N350	1,3
CF000119	CFFN-015-MFSR-06-G14-N350	0,6	CF000206	CFFN-015-MFSR-14-G14-N350	1,4
CF000120	CFFN-015-MFSR-07-G14-N350	0,7	CF000123	CFFN-015-MFSR-15-G14-N350	1,5
CF000121	CFFN-015-MFSR-08-G14-N350	0,8	CF000207	CFFN-015-MFSR-16-G14-N350	1,6
CF000203	CFFN-015-MFSR-09-G14-N350	0,9	CF000208	CFFN-015-MFSR-17-G14-N350	1,7
CF000088	CFFN-015-MFSR-10-G14-N350	1	CF000209	CFFN-015-MFSR-18-G14-N350	1,8
CF000204	CFFN-015-MFSR-11-G14-N350	1,1	CF000210	CFFN-015-MFSR-19-G14-N350	1,9
CF000122	CFFN-015-MFSR-12-G14-N350	1,2	CF000124	CFFN-015-MFSR-20-G14-N350	2,0

FLOW CONTROL VALVES

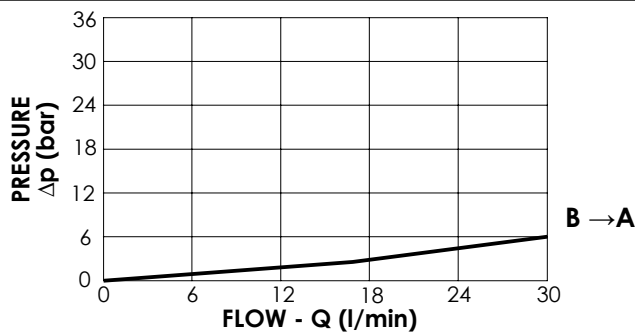
CFFN-030-MFSR

INSERT TYPE
DOUBLE MOUNTING



SPECIFICATIONS

Max. operating pressure:	350 bar
Rated flow:	30 l/min
Cavity:	G 3/8
Weight:	0,01 kg
Installation torque:	10 Nm



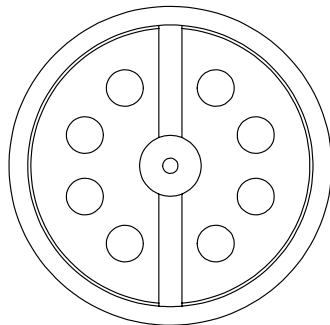
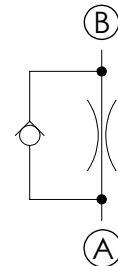
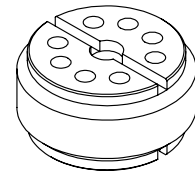
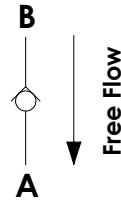
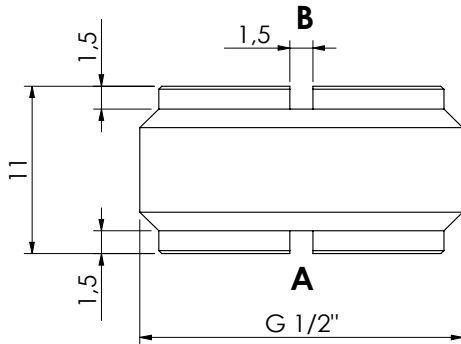
ORDERING CODES

Quick code	Description	Ø Orifice	Quick code	Description	Ø Orifice
CF000068	CFFN-030-MFSR-05-G38-N350	0,5	CF000197	CFFN-030-MFSR-13-G38-N350	1,3
CF000069	CFFN-030-MFSR-06-G38-N350	0,6	CF000198	CFFN-030-MFSR-14-G38-N350	1,4
CF000070	CFFN-030-MFSR-07-G38-N350	0,7	CF000074	CFFN-030-MFSR-15-G38-N350	1,5
CF000071	CFFN-030-MFSR-08-G38-N350	0,8	CF000199	CFFN-030-MFSR-16-G38-N350	1,6
CF000195	CFFN-030-MFSR-09-G38-N350	0,9	CF000200	CFFN-030-MFSR-17-G38-N350	1,7
CF000072	CFFN-030-MFSR-10-G38-N350	1	CF000201	CFFN-030-MFSR-18-G38-N350	1,8
CF000196	CFFN-030-MFSR-11-G38-N350	1,1	CF000202	CFFN-030-MFSR-19-G38-N350	1,9
CF000073	CFFN-030-MFSR-12-G38-N350	1,2	CF000125	CFFN-030-MFSR-20-G38-N350	2,0

FLOW CONTROL VALVES

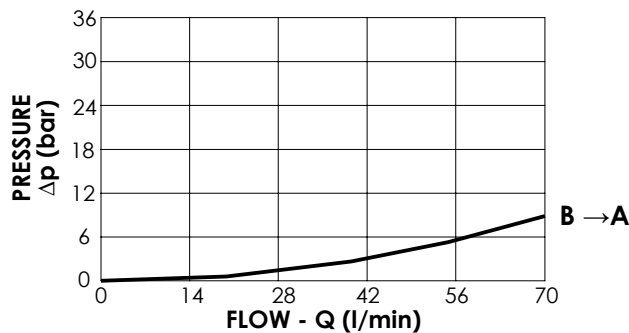
CFFN-070-MFSR

INSERT TYPE
DOUBLE MOUNTING



SPECIFICATIONS

Max. operating pressure:	350bar
Rated flow:	70 l/min
Cavity:	G 1/2
Weight:	0,02 kg
Installation torque:	10 Nm



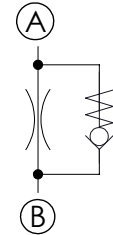
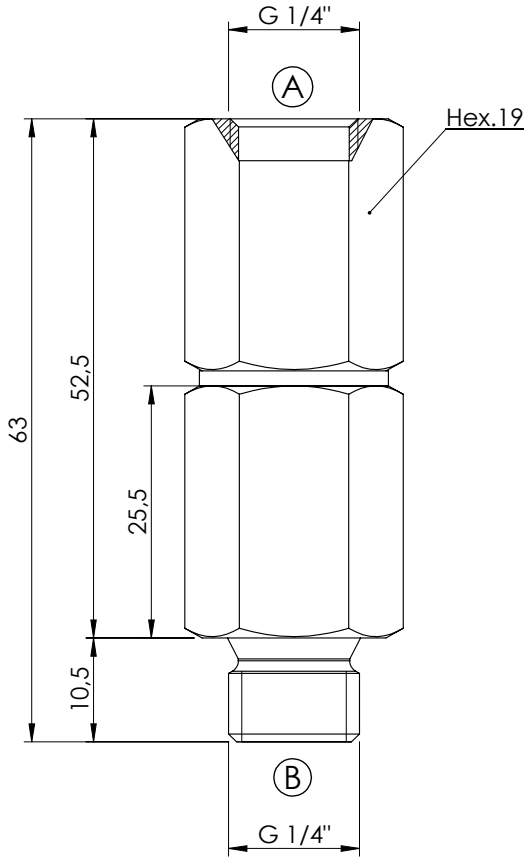
ORDERING CODES

Quick code	Description	Ø Orifice	Quick code	Description	Ø Orifice
CF000127	CFFN-070-MFSR-10-G12-N350	1,0	CF000080	CFFN-070-MFSR-33-G12-N350	3,3
CF000128	CFFN-070-MFSR-15-G12-N350	1,5			
CF000352	CFFN-070-MFSR-18-G12-N350	1,8			
CF000117	CFFN-070-MFSR-20-G12-N350	2,0			
CF000129	CFFN-070-MFSR-25-G12-N350	2,5			
CF000130	CFFN-070-MFSR-30-G12-N350	3,0			

FLOW RESTRICTOR

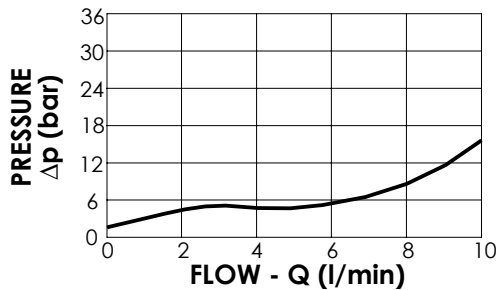
CDFN-010-PSNC

MONO DIRECTIONAL
NOT COMPENSATED



SPECIFICATIONS

Max. operating pressure:	350 bar
Rated flow (A to B):	10 l/min
Material:	Steel
Weight:	0,11 kg



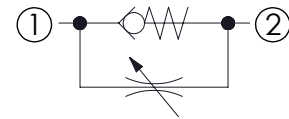
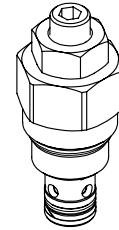
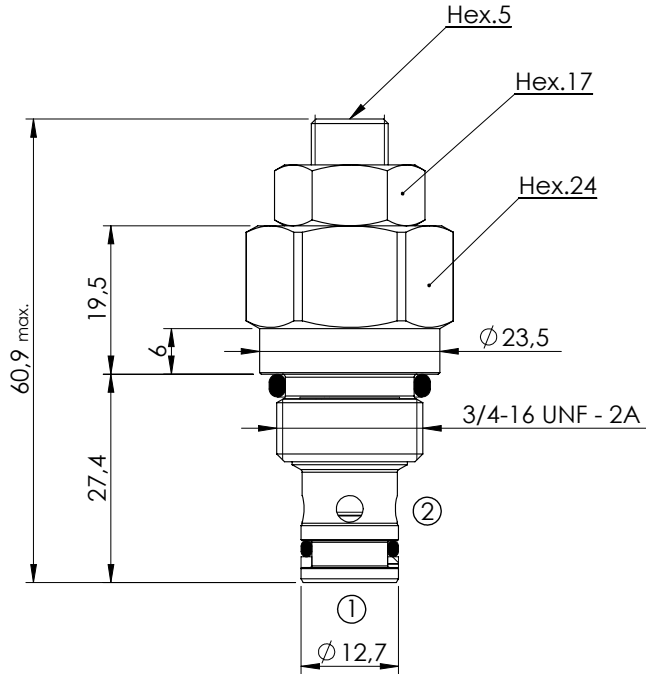
ORDERING CODES

Quick code	Description	Cracking pressure (bar)	Ports	Ø Hole (mm)
CD000084	CDFN-010-PSNC-05-G14-N350	5	A,B: G 1/4"	Ø 0,5
CD000085	CDFN-010-PSNC-06-G14-N350	5	A,B: G 1/4"	Ø 0,6
CD000086	CDFN-010-PSNC-07-G14-N350	5	A,B: G 1/4"	Ø 0,7
CD000087	CDFN-010-PSNC-08-G14-N350	5	A,B: G 1/4"	Ø 0,8
CD000089	CDFN-010-PSNC-10-G14-N350	5	A,B: G 1/4"	Ø 1
CD000091	CDFN-010-PSNC-13-G14-N350	5	A,B: G 1/4"	Ø 1,3
CD000167	CDFN-010-PSNC-03-G14-N350	5	A,B: G 1/4"	Ø 0,5 & wire Ø 0,4
CD000168	CDFN-010-PSNC-04-G14-N350	5	A,B: G 1/4"	Ø 0,6 & wire Ø 0,4

FLOW RESTRICTOR

CFSN-040-MHRR

**NEEDLE RESTRICTOR
FREE REVERSE FLOW**



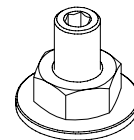
SPECIFICATIONS

Max. operating pressure:	350 bar
Rated Flow:	40 l/min
Material:	Steel
Cavity:	SAE-08-2N
Weight:	0,12 kg
Seal kit:	RA700081

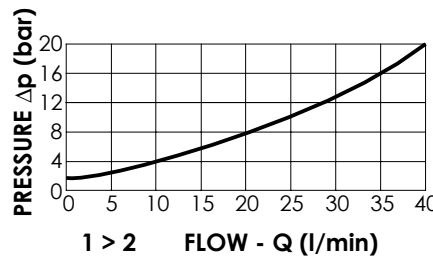
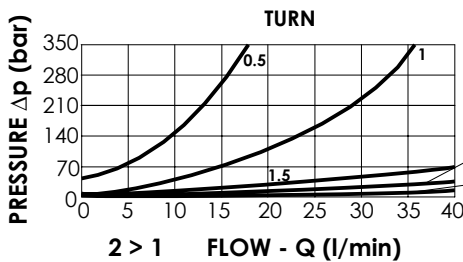
NOTES

Installation torque: 45-50 Nm

ADJUSTMENT OPTIONS



**Adjustment
with Screw**

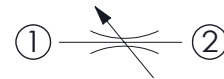
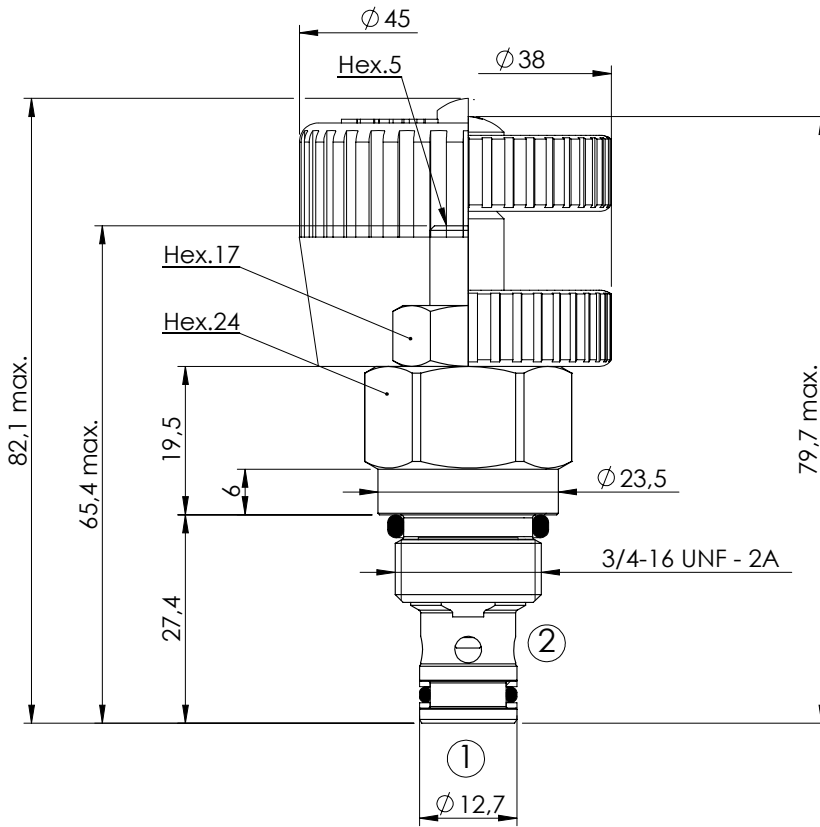
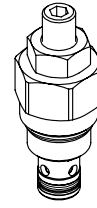


ORDERING CODES

Quick code	Description	Options
CF000167	CFSN-040-MHRR-NP-S08-N350	Adjustment with Screw

FLOW RESTRICTOR

CFSN-040-BHRR

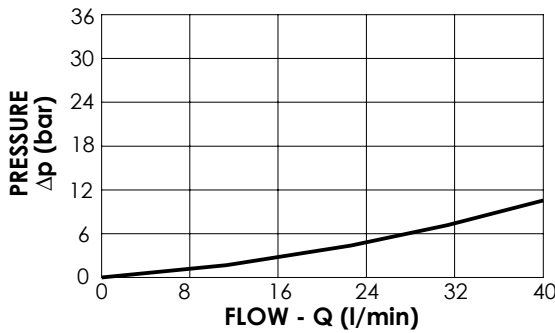


SPECIFICATIONS

Max. operating pressure:	350 bar
Rated flow:	40 l/min
Material:	Steel
Cavity:	SAE-08-2N
Weight:	0,12 kg
Seal kit:	RB700081

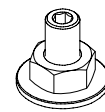
NOTES

Installation torque: 45-50 Nm



Fully open
Both directions

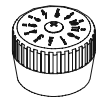
ADJUSTMENT OPTIONS



Screw and locknut



Handknob and locknut



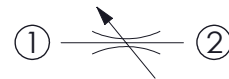
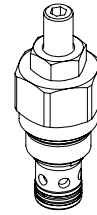
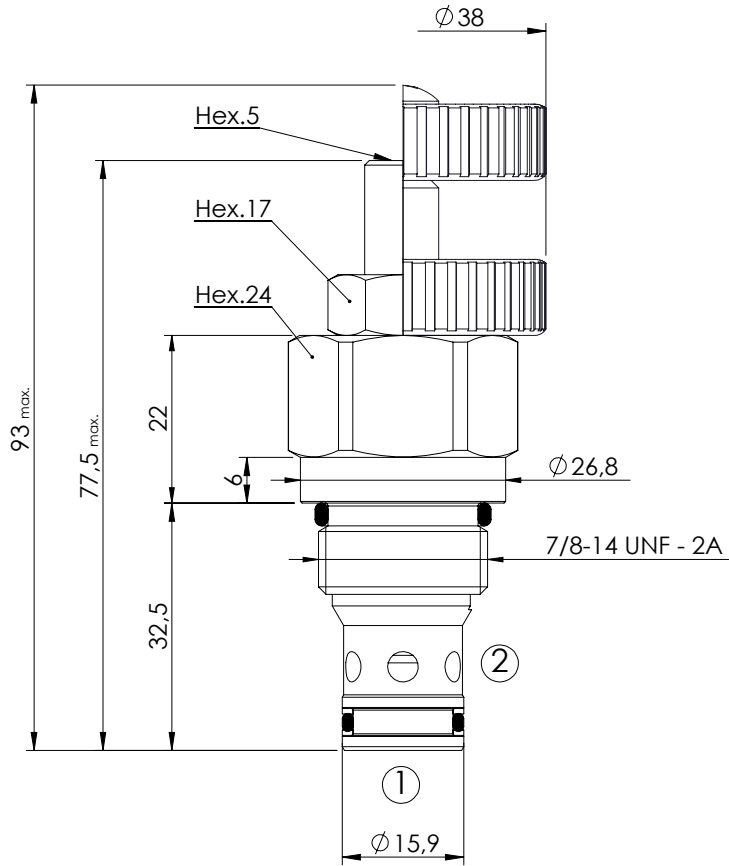
Graduated handknob

ORDERING CODES

Quick code	Description	Adjustment options	
CF000112	CFSN-040-BHRR-NP-S08-N350	Screw and locknut	
CF000109	CFSN-040-BVRR-NP-S08-N350	Handknob and locknut	
CF000253	CFSN-040-BMRR-NP-S08-N350	Graduated handknob	

FLOW RESTRICTOR

CFSN-070-BHRR

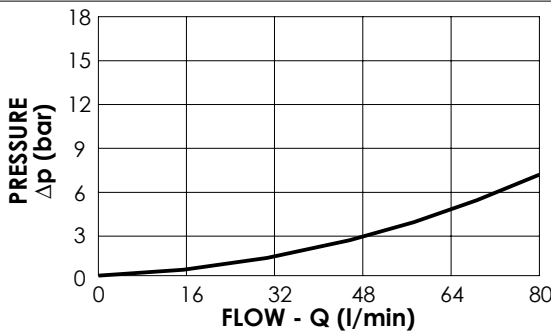


SPECIFICATIONS

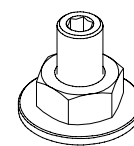
Max. operating pressure:	350 bar
Rated flow:	70 l/min
Material:	Steel
Cavity:	SAE-10-2N
Weight:	0,17 kg
Seal kit:	RB700082

NOTES

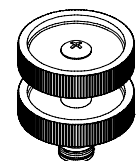
Installation torque: 55-62 Nm



ADJUSTMENT OPTIONS



Adjustments with Screw



Adjustments with Handknob

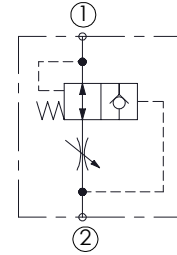
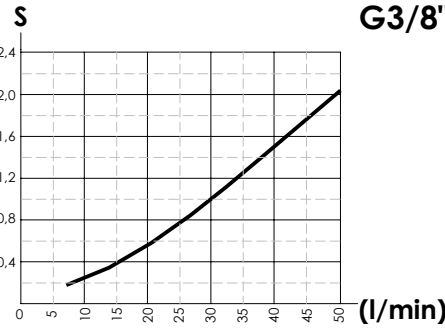
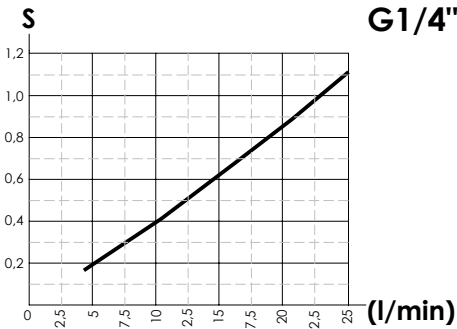
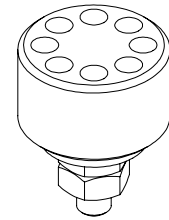
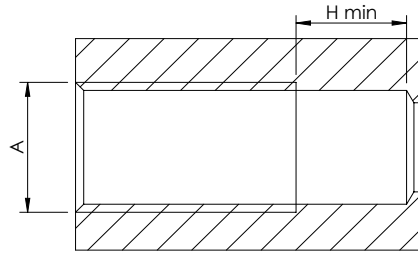
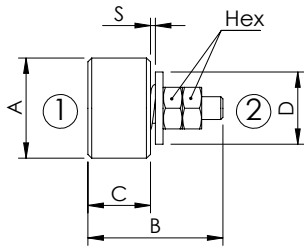
ORDERING CODES

Quick code	Description	Options
CF000136	CFSN-070-BHRR-NP-S10-N350	Adjustments with Screw
CF000116	CFSN-070-BVRR-NP-S10-N350	Adjustments with Handknob

HOSE BURST VALVE

CFHN-XXX-MHST

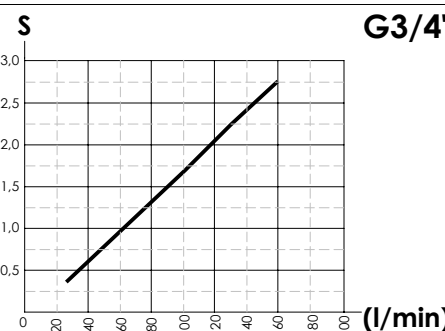
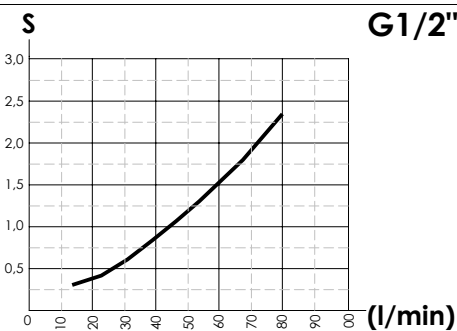
INSERT TYPE



SPECIFICATIONS

Max. operating pressure: 300 bar

	Max flow (l/min)	Min flow (l/min)
G1/4"	25	4
G3/8"	50	6,3
G1/2"	80	16
G3/4"	160	25
G1"	200	80



For sleeve housing consult Accessories section

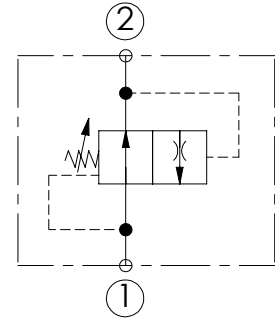
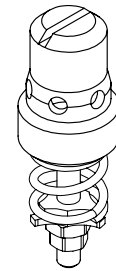
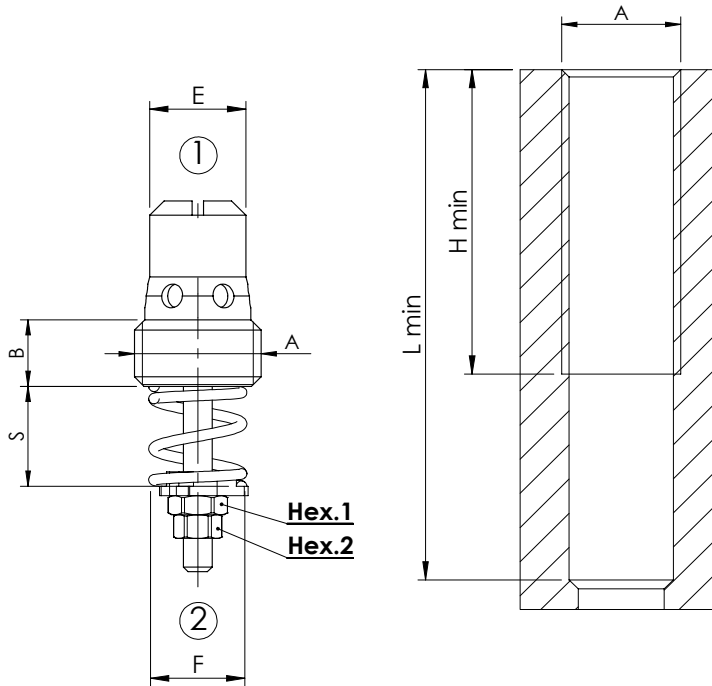
ORDERING CODES

Quick code	Description	A	B	C	D	Hex.	H
CF000348	CFHN-030-MHST-00-235	G 1/4"	17,5	8,1	9,5	5,5	11
CF000381	CFHN-050-MHST-00-234	G 3/8"	21	10,6	12,5	5,5	11
CF000379	CFHN-080-MHST-00-233	G 1/2"	25	12,1	15	7	15
CF000339	CFHN-160-MHST-00-195	G 3/4"	30,5	17,1	17,5	7	16
CF000382	CFHN-200-MHST-00-232	G 1"	38	22,1	26	7	20

FLOW REGULATOR

CFST-XXX-MDST

**2 WAYS COMPENSATED
INSERT TYPE**

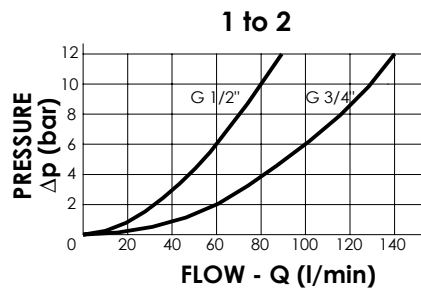
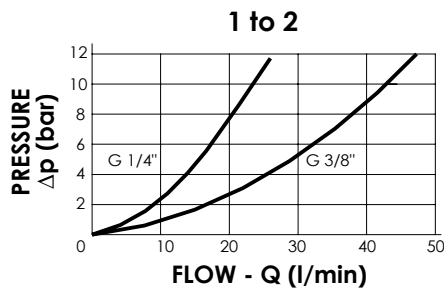


SPECIFICATIONS

Max. operating pressure: 300 bar

A	B	C	D	E	F	H min	L min	Hex.1	Hex.2	Installation torque:		Max. Flow ② → ①	Max. Flow ① → ②
G 1/4"	7	12,5	39	10	10,5	33	55	5,5	4,5	6	G1/4"	10	25
G 3/8"	7	13,5	43	11,5	13,5	34	60	7	6	8	G3/8"	25	50
G 1/2"	8	16	49	15	18	40	70	7	6	12	G1/2"	67	90
G 3/4"	10	21	61	20	23	51	80	7	6	15	G3/4"	150	150

For sleeve housing consult Accessories section



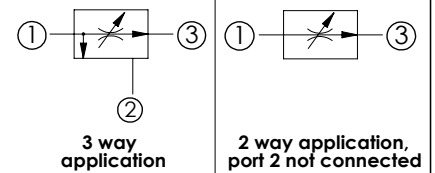
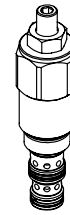
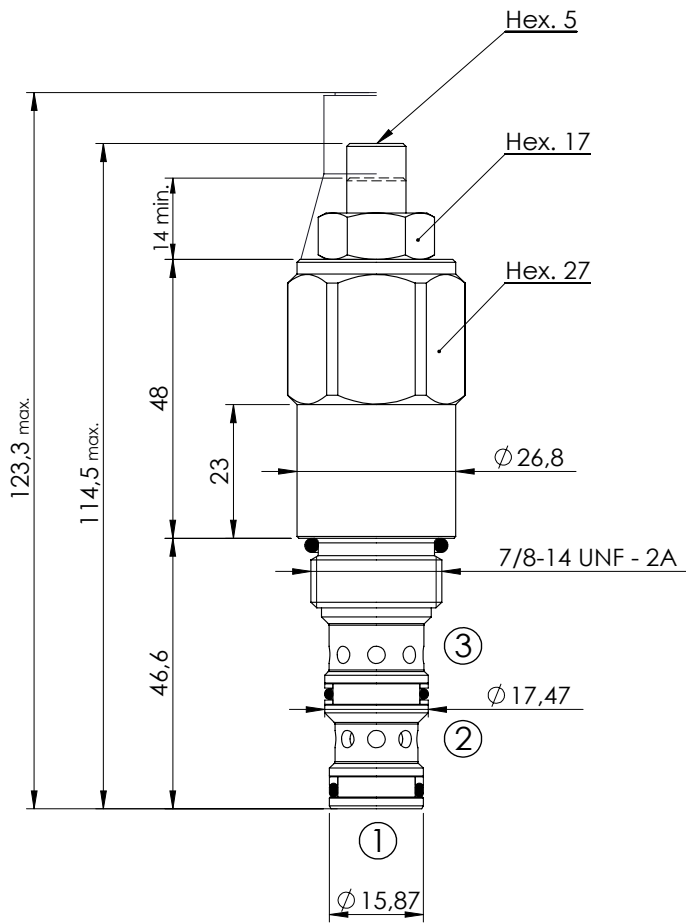
ORDERING CODES

G 1/4"		G 3/8"		G 1/2"		G 3/4"	
Quick code	Flow Range Adjustment (l/min)	Quick code	Flow Range Adjustment (l/min)	Quick code	Flow Range Adjustment (l/min)	Quick code	Flow Range Adjustment (l/min)
CF000104	1-1,6	CF000099	2,5-4	CF000093	16-21	CF000096	37-50
CF000105	1,6-2,5	CF000100	4-6,3	CF000094	21-28	CF000097	50-67
CF000106	2,5-4	CF000101	6,3-10	CF000095	28-37	CF000098	67-90
CF000107	4-6,3	CF000102	10-16	CF000081	37-50	CF000083	90-120
CF000108	6,3-10	CF000103	16-25	CF000082	50-67	CF000092	120-150

FLOW REGULATOR

CFCT-060-MHRR

**3 WAYS COMBINATION
ADJUSTABLE SETTING**

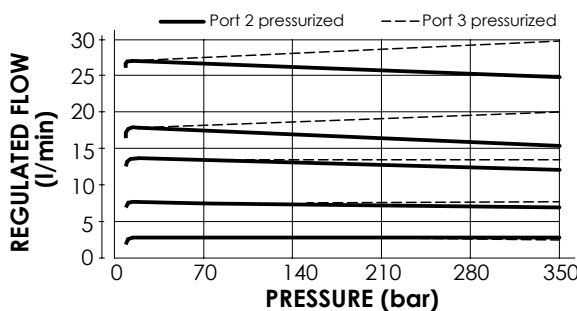
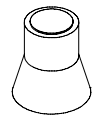


SPECIFICATIONS

Max. operating pressure:	350 bar
Rated flow:	60 l/min
Cavity:	SAE-10-3N
Weight:	0,28 kg

SEALING CAP

Ordering code:
AT000022



NOTES

- Installation torque: **55 - 62 Nm**
- Seal kit: **RA700092**
- If port 2 is blocked the valve operates as a two way flow regulator.
- Port 2 can be pressurized.

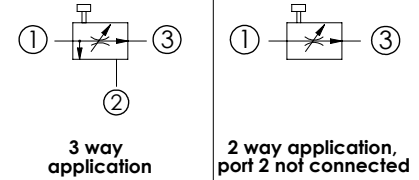
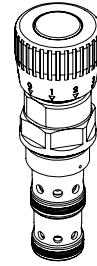
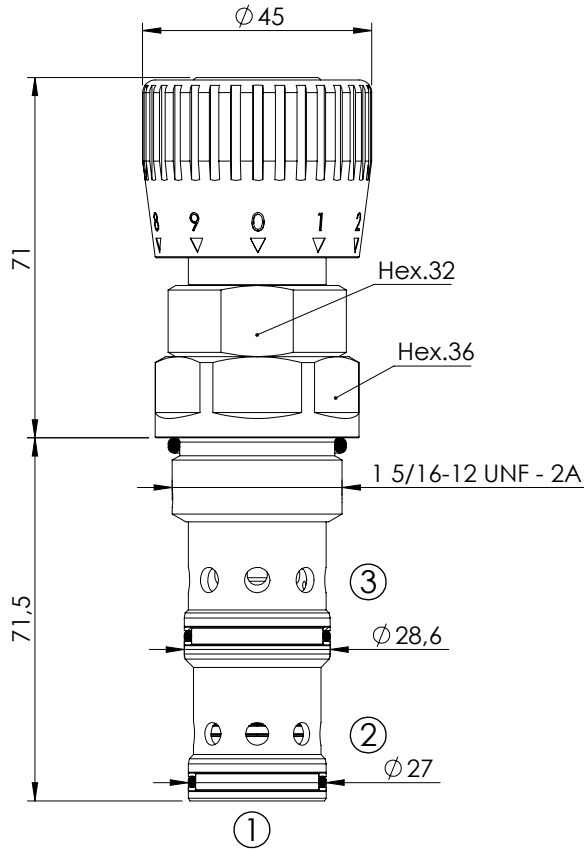
ORDERING CODES

Quick code	Description	Max. Inlet Flow (l/min)	Reg. Flow range (l/min)	Adjust. range (bar)
CF000063	CFCT-060-MHRR-03-S10-N350	60	2,5-3,5	Screw nut locknut
CF000149	CFCT-060-MHRR-04-S10-N350	60	3-4,5	Screw nut locknut
CF000150	CFCT-060-MHRR-06-S10-N350	60	4,2-6,2	Screw nut locknut
CF000006	CFCT-060-MHRR-09-S10-N350	60	5,8-9	Screw nut locknut
CF000054	CFCT-060-MHRR-12-S10-N350	60	8,5-12	Screw nut locknut
CF000062	CFCT-060-MHRR-16-S10-N350	60	11,5-16,5	Screw nut locknut
CF000151	CFCT-060-MHRR-23-S10-N350	60	15,5-22,5	Screw nut locknut
CF000152	CFCT-060-MHRR-30-S10-N350	60	20-29,5	Screw nut locknut
CF000057	CFCT-060-MHRR-32-S10-N350	60	26,5-35,5	Screw nut locknut

FLOW REGULATOR

CFPT-140-MVRR

**3 WAYS COMBINATION
ADJUSTABLE SETTING**

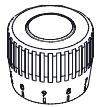


SPECIFICATIONS

Max. operating pressure:	350 bar
Division or combination:	140 l/min
Cavity:	SAE-16-3N
Weight:	0,7 kg
Seal kit:	RB700094

ADJUSTMENT TYPE

Graduated handknob for flow regulation under pressure



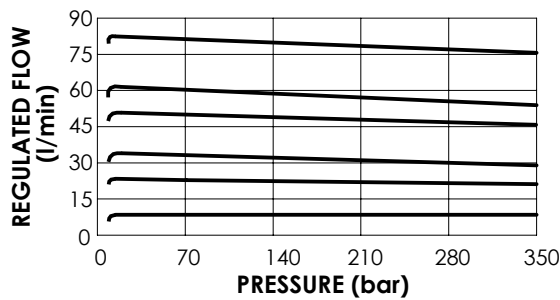
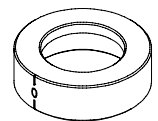
NOTES

Installation torque: 118 - 132 Nm

If port 2 is blocked the valve operates as a two way flow regulator. Port 2 can be pressurized.

The washer is used to indicate the zero.

Ordering code: SV000083



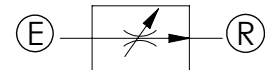
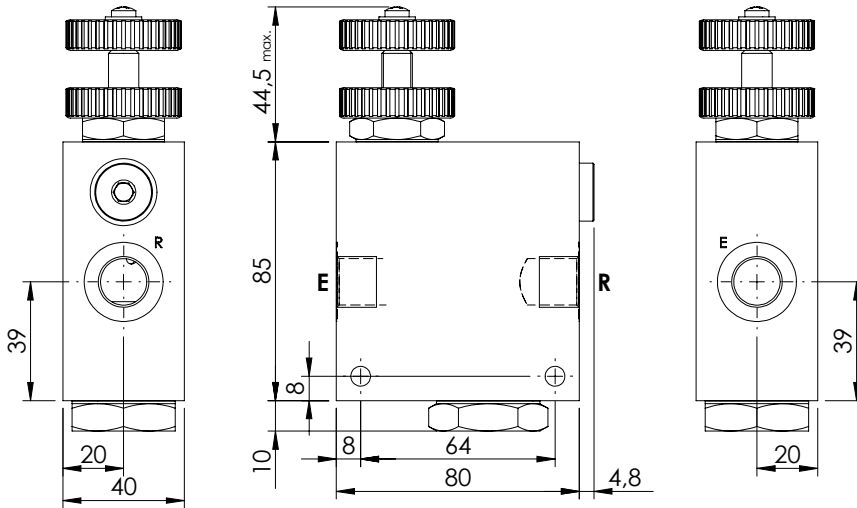
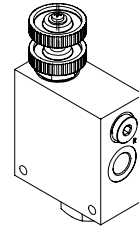
ORDERING CODES

Quick code	Description	Regulated flow range (l/min)	Adjustment option
CF000310	CFPT-140-MVRR-15-S16-N350	0 - 15	Graduated handknob
CF000311	CFPT-140-MVRR-25-S16-N350	0 - 25	Graduated handknob
CF000312	CFPT-140-MVRR-35-S16-N350	0 - 35	Graduated handknob
CF000313	CFPT-140-MVRR-50-S16-N350	0 - 50	Graduated handknob
CF000314	CFPT-140-MVRR-65-S16-N350	0 - 65	Graduated handknob
CF000315	CFPT-140-MVRR-80-S16-N350	0 - 80	Graduated handknob

FLOW REGULATOR

MFST-030-RVTR

2 WAYS COMPENSATED



SPECIFICATIONS

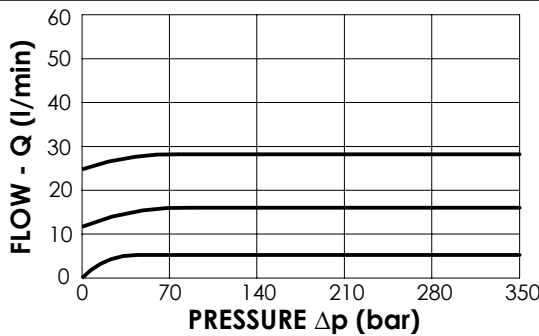
Max. operating pressure:	See table
Rated flow:	30 l/min
Manifold:	Aluminium/Steel
Weight:	0,95/1,39 kg

ADJUSTMENT OPTIONS



NOTES

Regulation: FINE



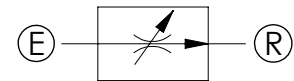
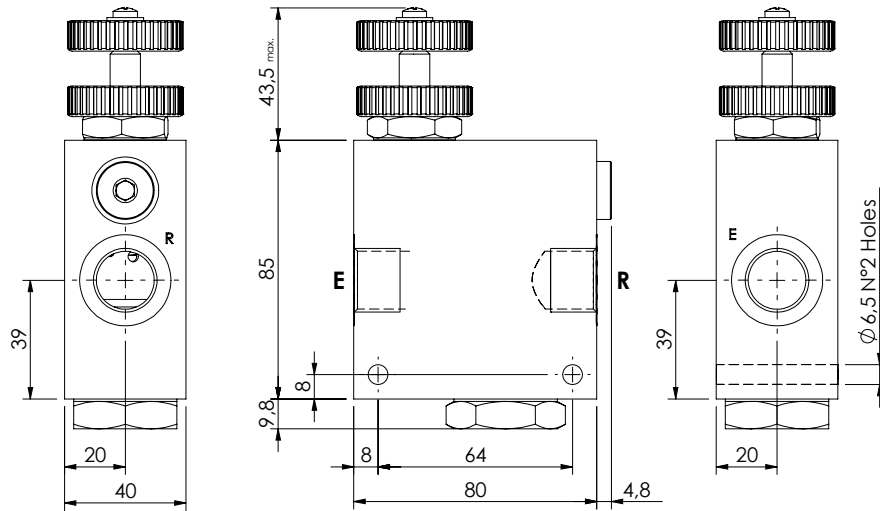
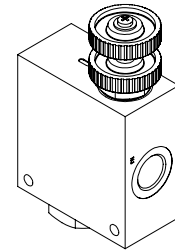
ORDERING CODES

Quick code	Description	Main ports size	Manifold	Max. Pressure (Bar)	Max. inlet flow (l/min)	Adjustment options
MF000241	MFST-030-RVTR-30-G38-N210	E,R: G 3/8"	Aluminium	210	30	Handknob and locknut
MF000242	MFST-030-RHTR-30-G38-N210	E,R: G 3/8"	Aluminium	210	30	Screw and locknut
MF000243	MFST-030-RMTR-30-G38-N210	E,R: G 3/8"	Aluminium	210	30	Graduated handknob
MF000244	MFST-030-RVSR-30-G38-N350	E,R: G 3/8"	Steel	350	30	Handknob and locknut
MF000245	MFST-030-RHSR-30-G38-N350	E,R: G 3/8"	Steel	350	30	Screw and locknut
MF000246	MFST-030-RMSR-30-G38-N350	E,R: G 3/8"	Steel	350	30	Graduated handknob

FLOW REGULATOR

MFST-055-TVTR

2 WAYS COMPENSATED



SPECIFICATIONS

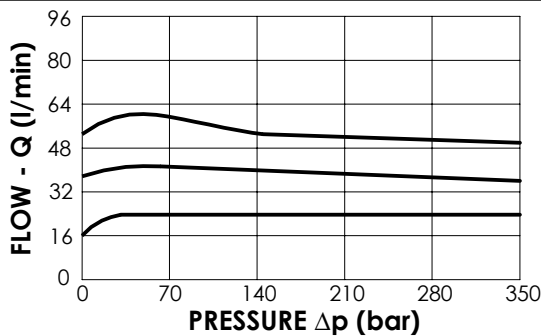
Max. operating pressure:	See table
Rated flow:	55 l/min
Manifold:	Aluminium/Steel
Weight:	0,94/2,01 kg

ADJUSTMENT OPTIONS



NOTES

Regulation: FINE



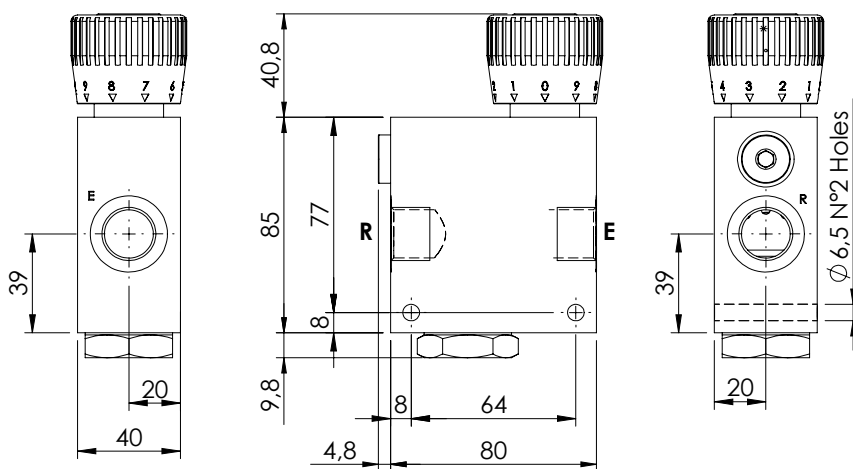
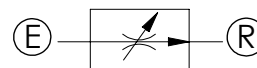
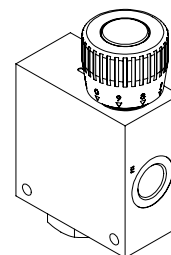
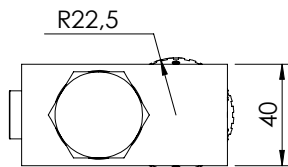
ORDERING CODES

Quick code	Description	Main ports size	Manifold	Max. Pressure (Bar)	Max. inlet flow (l/min)	Adjustment options
MF000052	MFST-055-RVTR-55-G12-N210	E,R: G 1/2"	Aluminium	210	55	Handknob and locknut
MF000238	MFST-055-RHTR-55-G12-N210	E,R: G 1/2"	Aluminium	210	55	Screw and locknut
MF000106	MFST-055-RMTR-55-G12-N210	E,R: G 1/2"	Aluminium	210	55	Graduated handknob
MF000148	MFST-055-RVSR-55-G12-N350	E,R: G 1/2"	Steel	350	55	Handknob and locknut
MF000239	MFST-055-RHSR-55-G12-N350	E,R: G 1/2"	Steel	350	55	Screw and locknut
MF000240	MFST-055-RMSR-55-G12-N350	E,R: G 1/2"	Steel	350	55	Graduated handknob

FLOW REGULATOR

MFST-090-RPZR

2 WAYS COMPENSATED

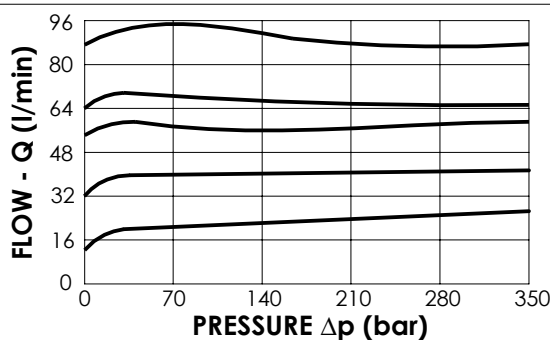
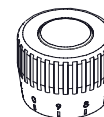


SPECIFICATIONS

Max. operating pressure:	210 bar
Rated flow:	90 l/min
Manifold:	Aluminium
Weight:	0,93 kg

ADJUSTMENT TYPE

Graduated handknob for flow regulation under pressure



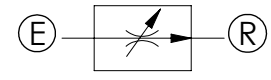
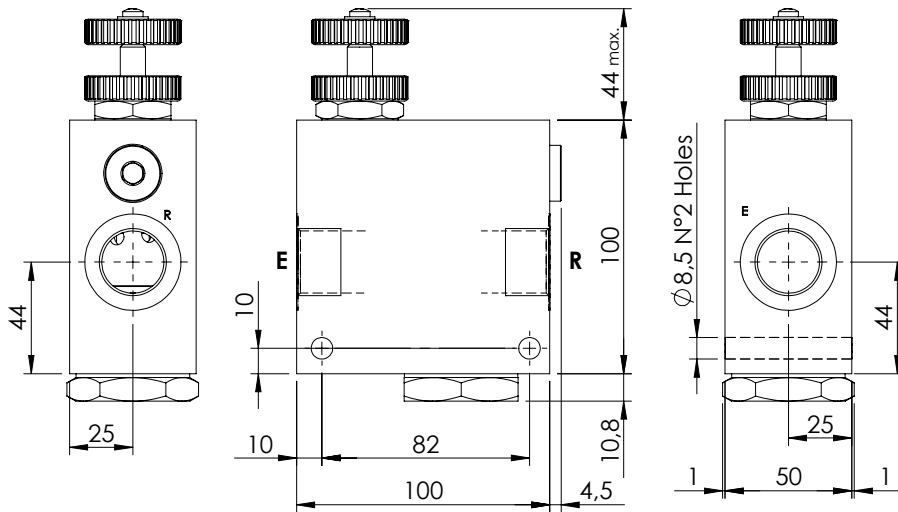
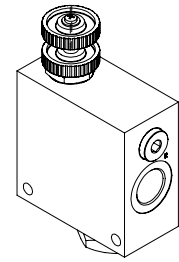
ORDERING CODES

Quick code	Description	Main ports size	Regulated flow range (l/min)	Adjustment type
MF000186	MFST-090-RPZR-06-G12-N210	G 1/2"	0 - 6	Graduated handknob
MF000187	MFST-090-RPZR-12-G12-N210	G 1/2"	0 - 12	Graduated handknob
MF000188	MFST-090-RPZR-25-G12-N210	G 1/2"	0 - 25	Graduated handknob
MF000189	MFST-090-RPZR-32-G12-N210	G 1/2"	0 - 32	Graduated handknob
MF000190	MFST-090-RPZR-50-G12-N210	G 1/2"	0 - 50	Graduated handknob
MF000191	MFST-090-RPZR-63-G12-N210	G 1/2"	0 - 63	Graduated handknob

FLOW REGULATOR

MFST-090-RVTR

2 WAYS COMPENSATED



SPECIFICATIONS

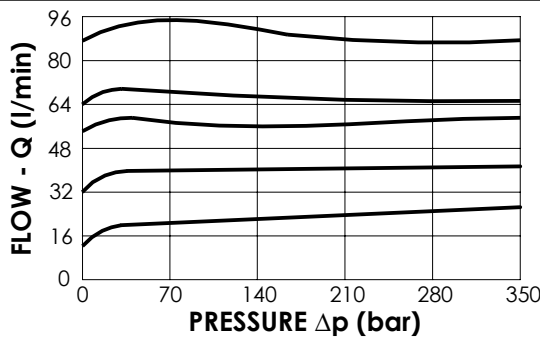
Max. operating pressure:	See table
Rated flow:	90 l/min
Manifold:	Aluminium/Steel
Weight:	1,66 / 3,6 kg

ADJUSTMENT OPTIONS



NOTES

Regulation: STANDARD



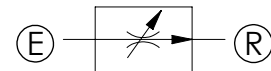
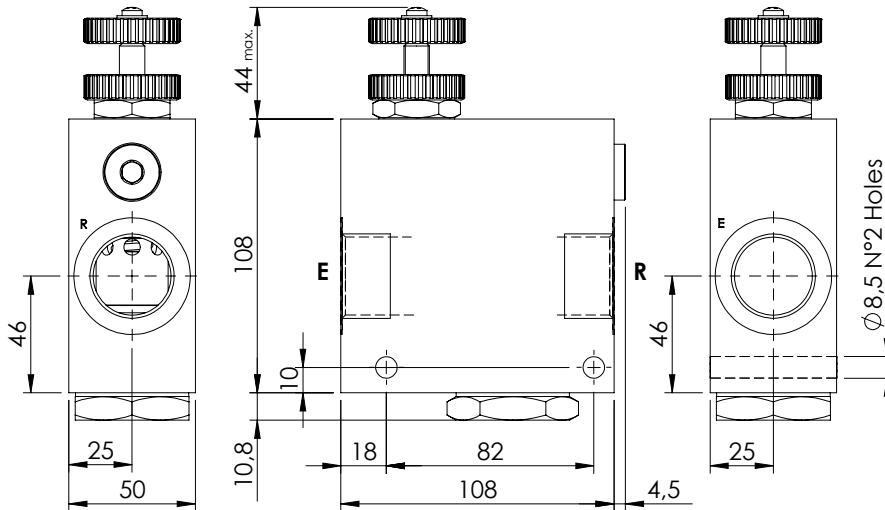
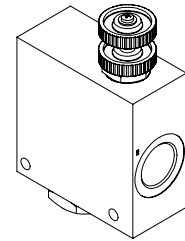
ORDERING CODES

Quick code	Description	Main ports size	Manifold	Max. pressure (Bar)	Max. inlet flow (l/min)	Adjustment options
MF000042	MFST-090-RVTR-90-G34-N210	E,R: G 3/4"	Aluminium	210	90	Handknob and locknut
MF000234	MFST-090-RHTR-90-G34-N210	E,R: G 3/4"	Aluminium	210	90	Screw and locknut
MF000235	MFST-090-RMTR-90-G34-N210	E,R: G 3/4"	Aluminium	210	90	Graduated handknob
MF000139	MFST-090-RVSR-90-G34-N350	E,R: G 3/4"	Steel	350	90	Handknob and locknut
MF000236	MFST-090-RHSR-90-G34-N350	E,R: G 3/4"	Steel	350	90	Screw and locknut
MF000237	MFST-090-RMSR-90-G34-N350	E,R: G 3/4"	Steel	350	90	Graduated handknob

FLOW REGULATOR

MFST-190-RVTR

2 WAYS COMPENSATED



SPECIFICATIONS

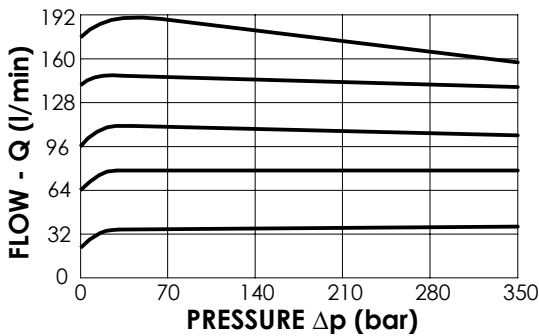
Max. operating pressure:	210/350 bar
Rated flow:	190 l/min
Manifold:	Aluminium/Steel
Weight:	1,8/4,0 kg

ADJUSTMENT OPTIONS



NOTES

Regulation: STANDARD



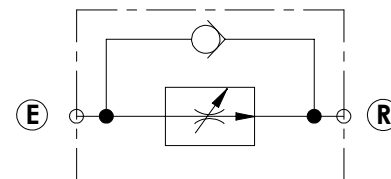
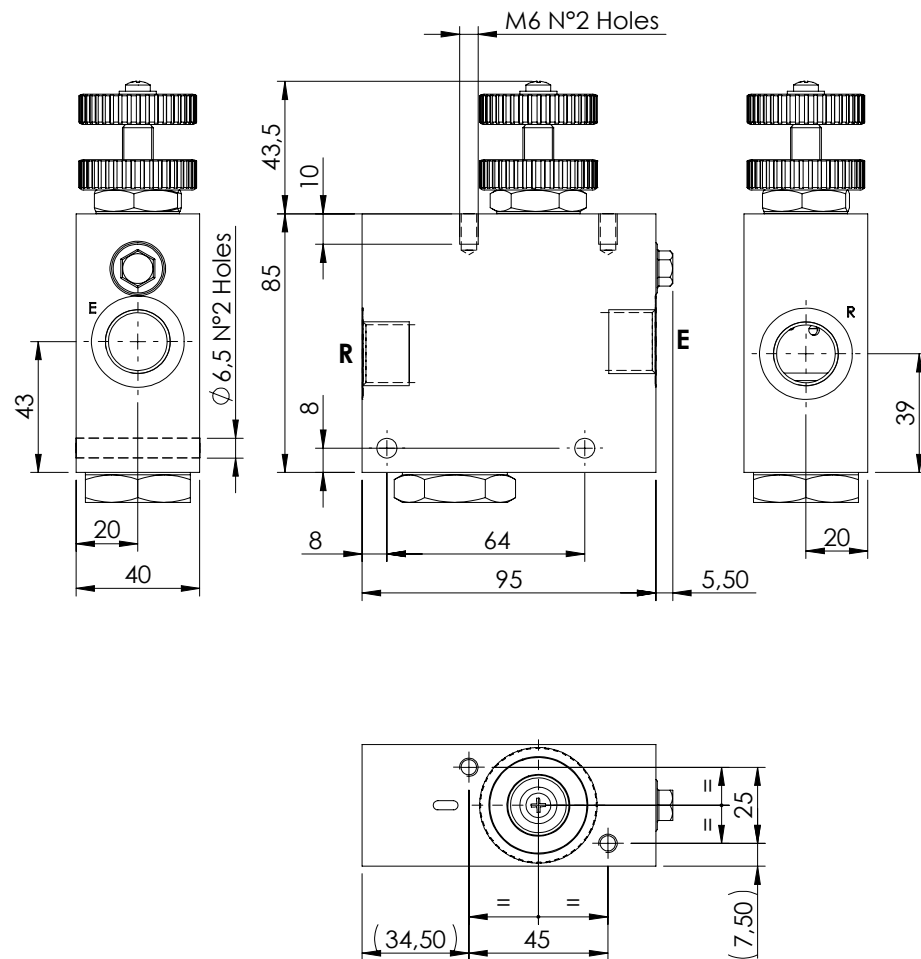
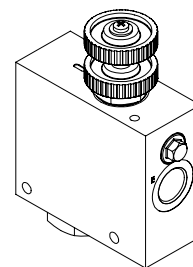
ORDERING CODES

Quick code	Description	Main ports size	Manifold	Max. Pressure (Bar)	Max. inlet flow (l/min)	Adjustment options
MF000253	MFST-190-RVTR-19-G10-N210	E,R: G 1"	Aluminium	210	190	Handknob and locknut
MF000254	MFST-190-RHTR-19-G10-N210	E,R: G 1"	Aluminium	210	190	Screw and locknut
MF000255	MFST-190-RMTR-19-G10-N210	E,R: G 1"	Aluminium	210	190	Graduated handknob
MF000256	MFST-190-RVSR-19-G10-N350	E,R: G 1"	Steel	350	190	Handknob and locknut
MF000257	MFST-190-RHSR-19-G10-N350	E,R: G 1"	Steel	350	190	Screw and locknut
MF000258	MFST-190-RMSR-19-G10-N350	E,R: G 1"	Steel	350	190	Graduated handknob

FLOW REGULATOR

MFST-055-VVTR

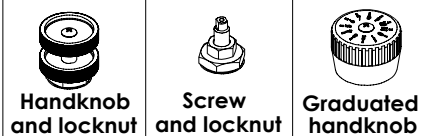
**2 WAYS COMPENSATED
WITH CHECK VALVE**



SPECIFICATIONS

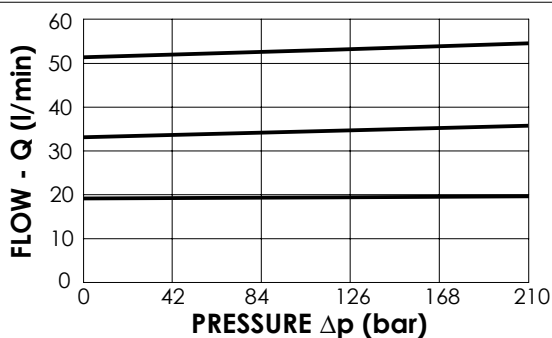
Max. operating pressure:	210 bar
Rated flow:	55 l/min
Manifold:	Aluminium
Weight:	1,06 kg

ADJUSTMENT OPTIONS



NOTES

Regulating: FINE



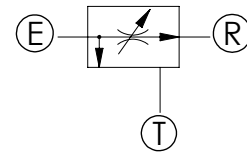
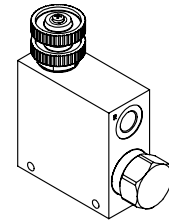
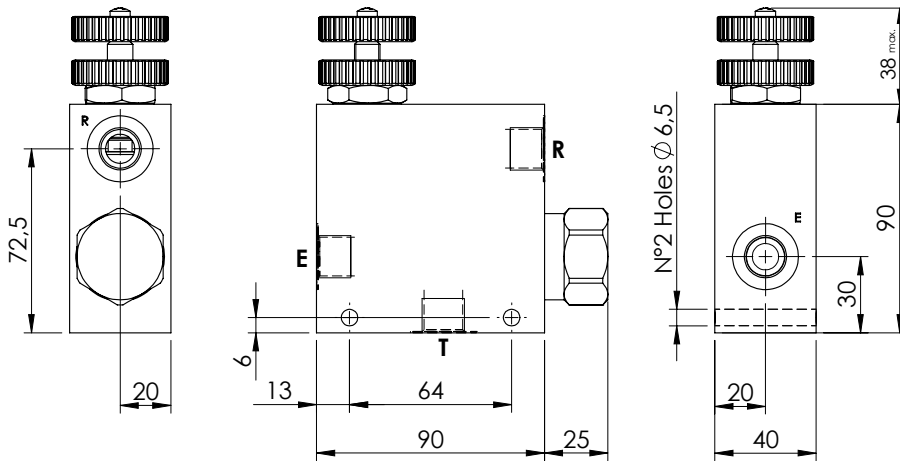
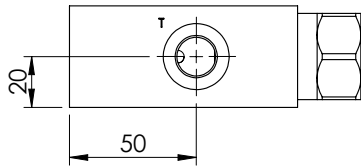
ORDERING CODES

Quick code	Description	Main ports size	Max. inlet flow (l/min)	Adjustment options
MF000131	MFST-055-VVTR-55-G12-N210	G 1/2"	55	Handknob and locknut
MF000375	MFST-055-VHTR-55-G12-N210	G 1/2"	55	Screw and locknut
MF000146	MFST-055-VMTR-55-G12-N210	G 1/2"	55	Graduated handknob

FLOW REGULATOR

MFCT-055-RVTR

3 WAYS COMPENSATED



SPECIFICATIONS

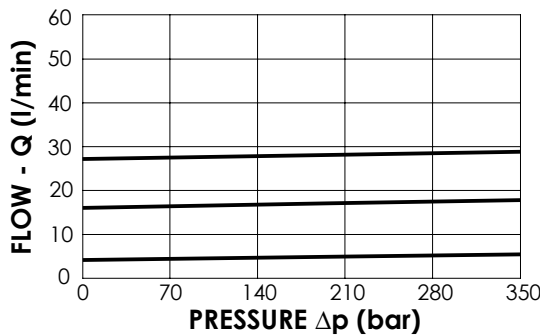
Max. operating pressure:	see table
Rated flow:	55 l/min
Manifold:	Aluminium/Steel
Weight:	1,12/2,48 kg

ADJUSTMENT OPTIONS

Handknob and locknut	Screw and locknut	Graduated handknob

NOTES

Regulation sensitivity: FINE



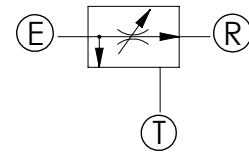
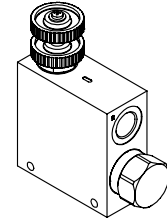
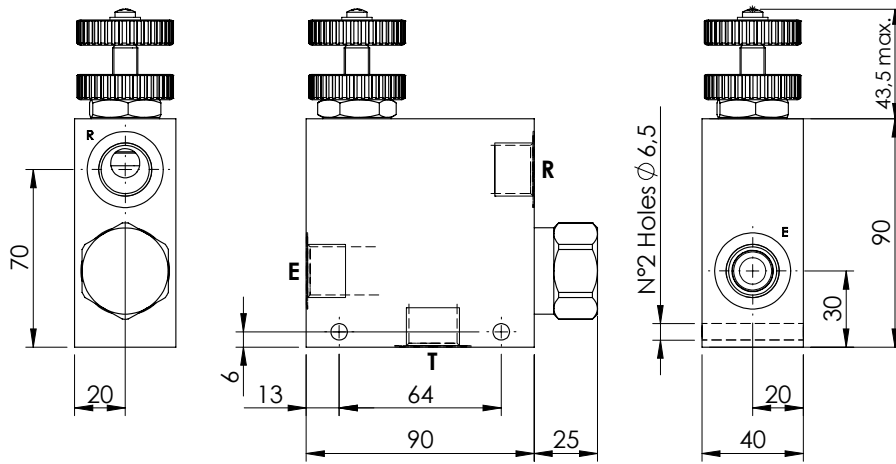
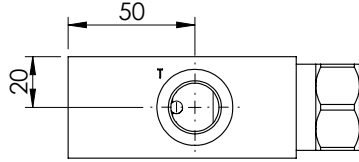
ORDERING CODES

Quick code	Description	Main ports size	Manifold	Max. Pressure (Bar)	Max. reg.flow (l/min)	Max. inlet flow (l/min)	Adjustment options
MF000008	MFCT-055-RVTR-30-G38-N210	G 3/8"	Aluminium	210	30	55	Handknob and locknut
MF000009	MFCT-055-RHTR-30-G38-N210	G 3/8"	Aluminium	210	30	55	Screw and locknut
MF000010	MFCT-055-RMTR-30-G38-N210	G 3/8"	Aluminium	210	30	55	Graduated handknob
MF000089	MFCT-055-RVSR-30-G38-N350	G 3/8"	Steel	350	30	55	Handknob and locknut
MF000090	MFCT-055-RHSR-30-G38-N350	G 3/8"	Steel	350	30	55	Screw and locknut
MF000091	MFCT-055-RMSR-30-G38-N350	G 3/8"	Steel	350	30	55	Graduated handknob

FLOW REGULATOR

MFCT-090-RVTR

3 WAYS COMPENSATED



SPECIFICATIONS

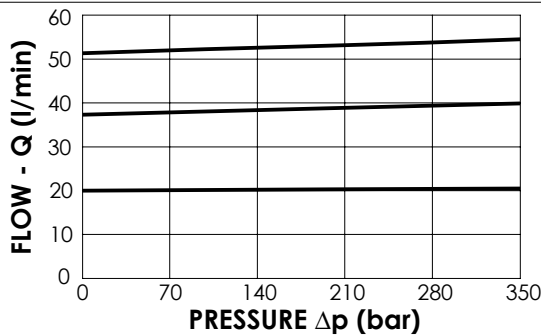
Max. operating pressure:	see table
Rated flow:	90 l/min
Manifold:	Aluminium/Steel
Weight:	1,11/2,45 kg

ADJUSTMENT OPTIONS



NOTES

Regulation: FINE



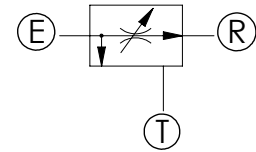
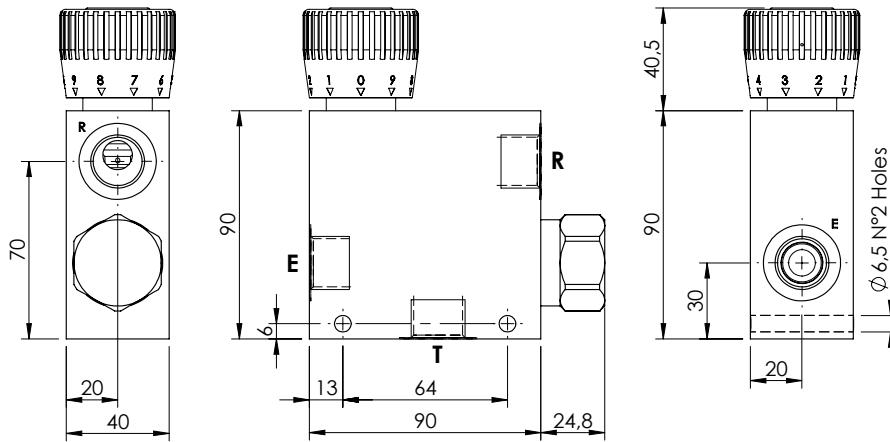
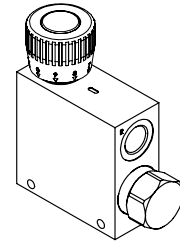
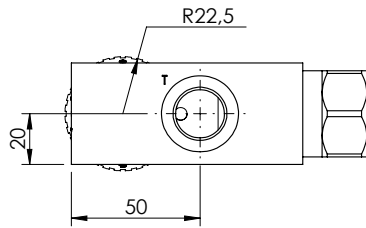
ORDERING CODES

Quick code	Description	Main ports size	Manifold	Max. Pressure (Bar)	Max. reg.flow (l/min)	Max. inlet flow (l/min)	Adjustment options
MF000015	MFCT-090-RVTR-55-G12-N210	G 1/2"	Aluminium	210	55	90	Handknob and locknut
MF000016	MFCT-090-RHTR-55-G12-N210	G 1/2"	Aluminium	210	55	90	Screw and locknut
MF000014	MFCT-090-RMTR-55-G12-N210	G 1/2"	Aluminium	210	55	90	Graduated handknob
MF000095	MFCT-090-RVSR-55-G12-N350	G 1/2"	Steel	350	55	90	Handknob and locknut
MF000096	MFCT-090-RHSR-55-G12-N350	G 1/2"	Steel	350	55	90	Screw and locknut
MF000097	MFCT-090-RMSR-55-G12-N350	G 1/2"	Steel	350	55	90	Graduated handknob

FLOW REGULATOR

MFCT-090-RPZR

3 WAYS COMPENSATED

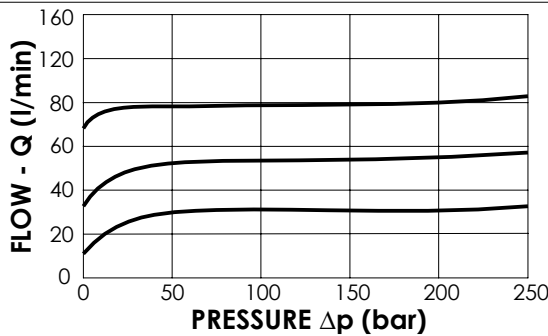
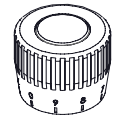


SPECIFICATIONS

Max. operating pressure:	210 bar
Rated flow:	90 l/min
Manifold:	Aluminium
Weight:	0,93 kg

ADJUSTMENT TYPE

Graduated handknob for flow regulation under pressure



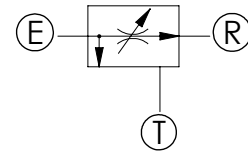
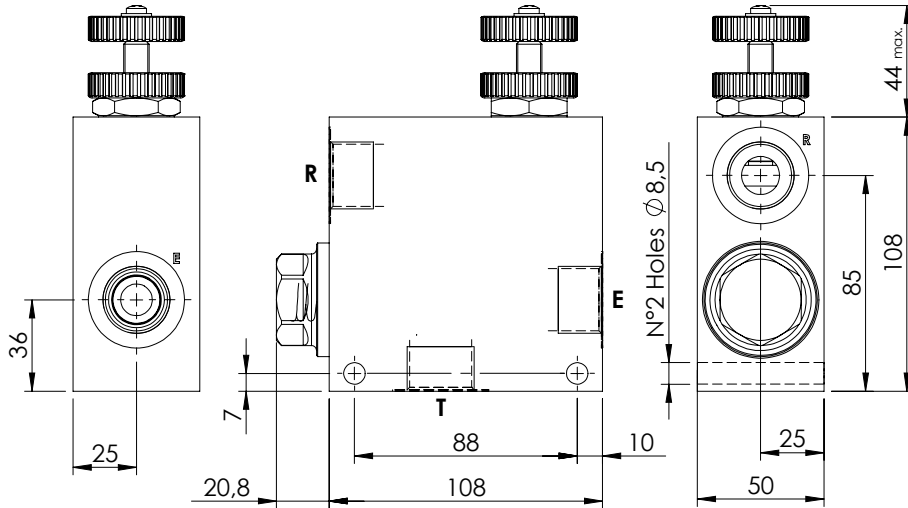
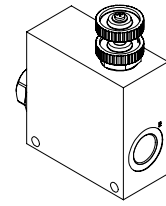
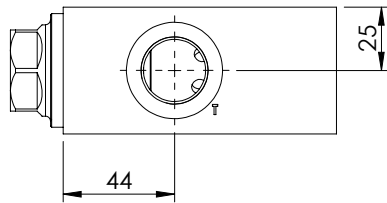
ORDERING CODES

Quick code	Description	Main ports size	Regulated flow range (l/min)	Adjustment type
MF000194	MFCT-090-RPZR-06-G12-N210	G 1/2"	0 - 6	Graduated handknob
MF000195	MFCT-090-RPZR-12-G12-N210	G 1/2"	0 - 12	Graduated handknob
MF000196	MFCT-090-RPZR-25-G12-N210	G 1/2"	0 - 25	Graduated handknob
MF000197	MFCT-090-RPZR-32-G12-N210	G 1/2"	0 - 32	Graduated handknob
MF000198	MFCT-090-RPZR-50-G12-N210	G 1/2"	0 - 50	Graduated handknob
MF000199	MFCT-090-RPZR-63-G12-N210	G 1/2"	0 - 63	Graduated handknob
MF000200	MFCT-090-RPZR-70-G12-N210	G 1/2"	0 - 70	Graduated handknob
MF000201	MFCT-090-RPZR-80-G12-N210	G 1/2"	0 - 80	Graduated handknob

FLOW REGULATOR

MFCT-150-RVTR

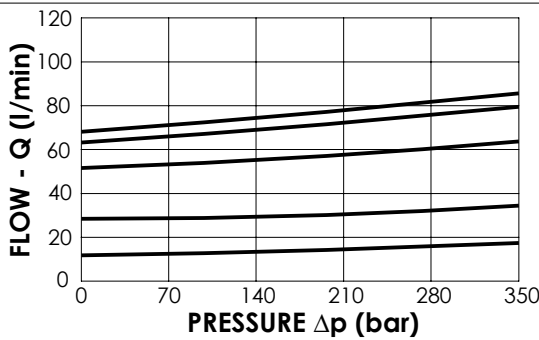
3 WAYS COMPENSATED



SPECIFICATIONS

Max. operating pressure:	see table
Rated flow:	150 l/min
Manifold:	Aluminium/Steel
Weight:	1,79/4,23 kg

ADJUSTMENT OPTIONS



NOTES

Regulation: STANDARD

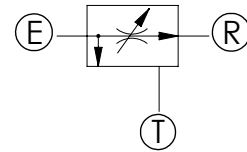
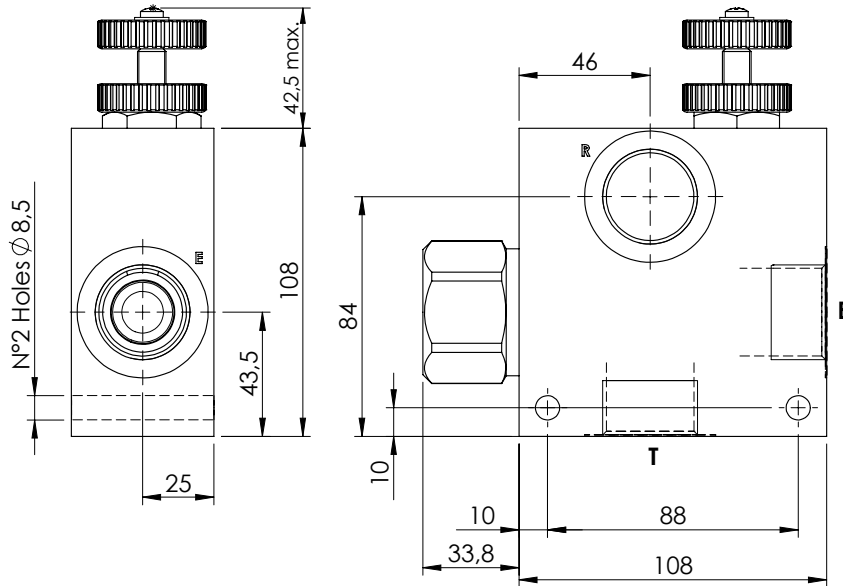
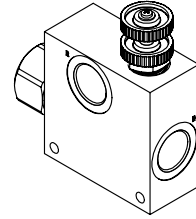
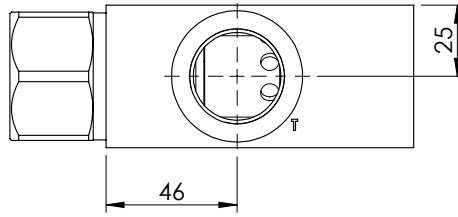
ORDERING CODES

Quick code	Description	Main ports size	Manifold	Max. Pressure (Bar)	Max. reg.flow (l/min)	Max. inlet flow (l/min)	Adjustment options
MF000031	MFCT-150-RVTR-90-G34-N210	G 3/4"	Aluminium	210	90	150	Handknob and locknut
MF000032	MFCT-150-RHTR-90-G34-N210	G 3/4"	Aluminium	210	90	150	Screw and locknut
MF000033	MFCT-150-RMTR-90-G34-N210	G 3/4"	Aluminium	210	90	150	Graduated handknob
MF000023	MFCT-150-RVSR-90-G34-N350	G 3/4"	Steel	350	90	150	Handknob and locknut
MF000024	MFCT-150-RHSR-90-G34-N350	G 3/4"	Steel	350	90	150	Screw and locknut
MF000025	MFCT-150-RMSR-90-G34-N350	G 3/4"	Steel	350	90	150	Graduated handknob

FLOW REGULATOR

MFCT-280-RVTR

3 WAYS COMPENSATED



SPECIFICATIONS

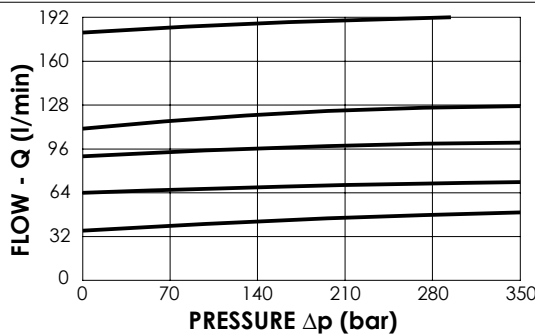
Max. operating pressure:	see table
Rated flow:	280 l/min
Manifold:	Aluminium/Steel
Weight:	1,97/4,08 kg

ADJUSTMENT OPTIONS



NOTES

Regulating: STANDARD



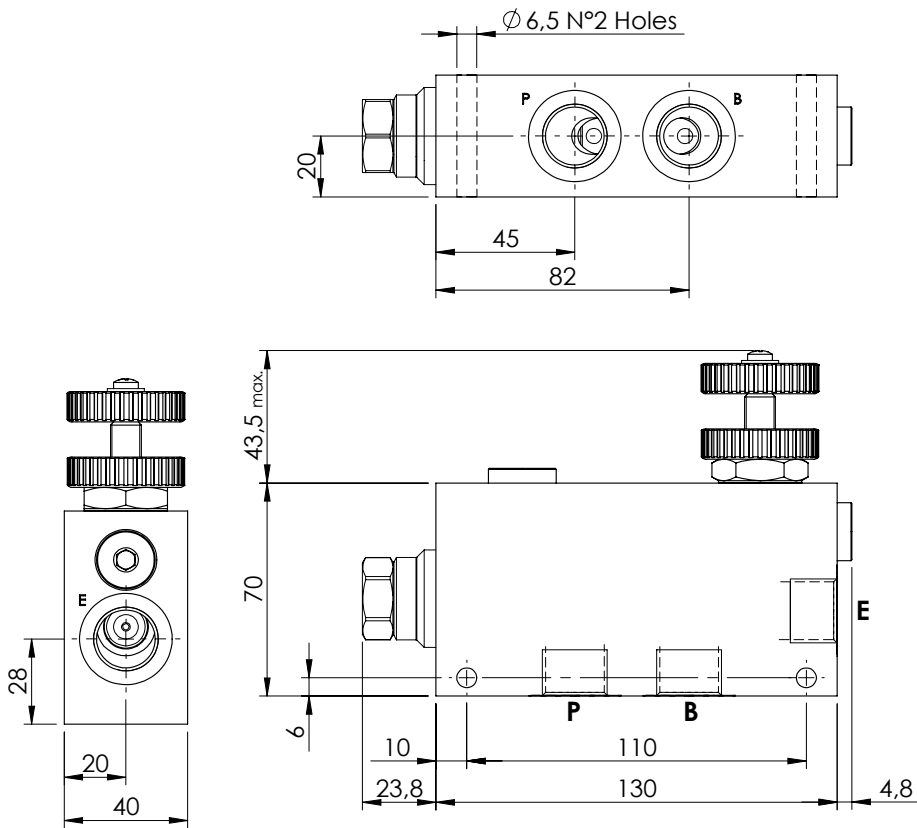
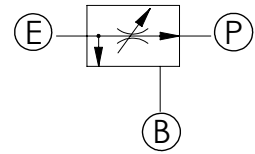
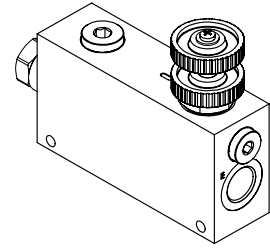
ORDERING CODES

Quick code	Description	Main ports size	Manifold	Max. Pressure (Bar)	Max. reg.flow (l/min)	Max. inlet flow (l/min)	Adjustment options
MF000035	MFCT-280-RVTR-19-G10-N210	G 1"	Aluminium	210	190	280	Handknob and locknut
MF000036	MFCT-280-RHTR-19-G10-N210	G 1"	Aluminium	210	190	280	Screw and locknut
MF000037	MFCT-280-RMTR-19-G10-N210	G 1"	Aluminium	210	190	280	Graduated handknob
MF000026	MFCT-280-RVSR-19-G10-N350	G 1"	Steel	350	190	280	Handknob and locknut
MF000027	MFCT-280-RHSR-19-G10-N350	G 1"	Steel	350	190	280	Screw and locknut
MF000028	MFCT-280-RMSR-19-G10-N350	G 1"	Steel	350	190	280	Graduated handknob

FLOW REGULATOR

MFPT-090-RVTR

**PRESSURE COMPENSATED
PRIORITY FLOW REGULATOR**



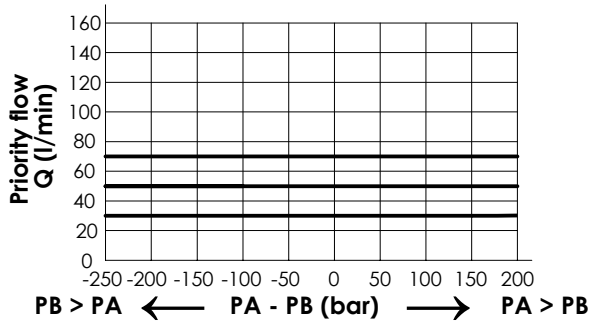
SPECIFICATIONS

Max. operating pressure:	210 bar
Rated flow:	90 l/min
Manifold:	Aluminium
Weight:	1,2 kg

ADJUSTMENT OPTIONS



NOTES



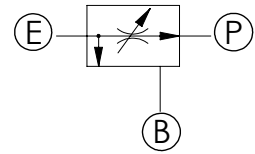
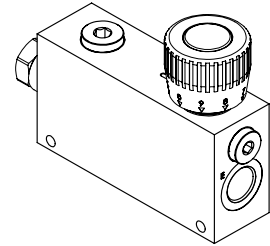
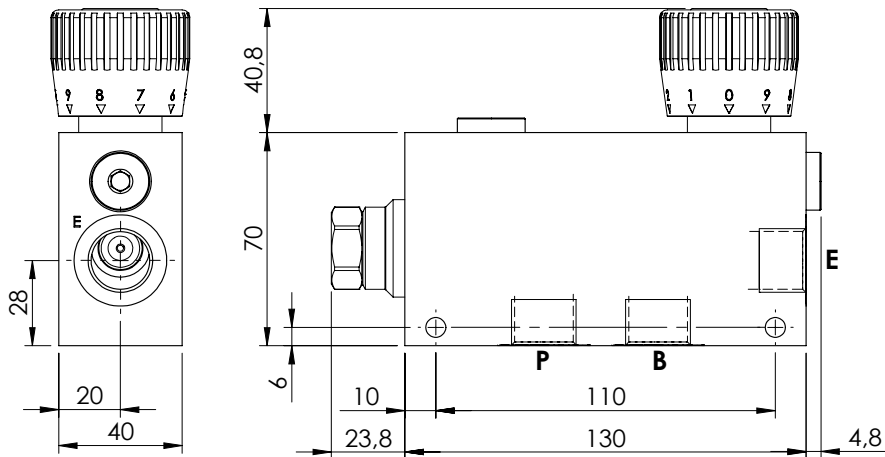
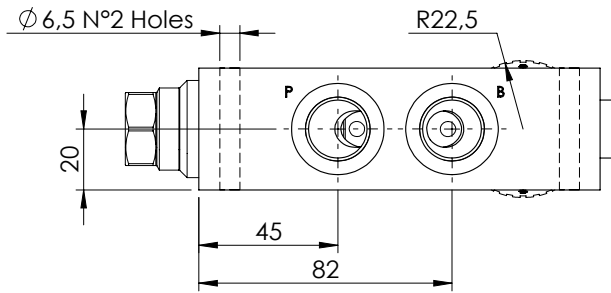
ORDERING CODES

Quick code	Description	Main ports size	Max. inlet flow (l/min)	Max. regulated flow (l/min)	Adjustment options
MF000121	MFPT-090-RVTR-70-G12-N210	E,P,T: G1/2"	90 l/min	70 l/min	Handknob and locknut
MF000136	MFPT-090-RVTR-70-G38-N210	E,P,T: G3/8"	90 l/min	70 l/min	Handknob and locknut

FLOW REGULATOR

MFPT-090-RPZR

**PRESSURE COMPENSATED
PRIORITY FLOW REGULATOR**

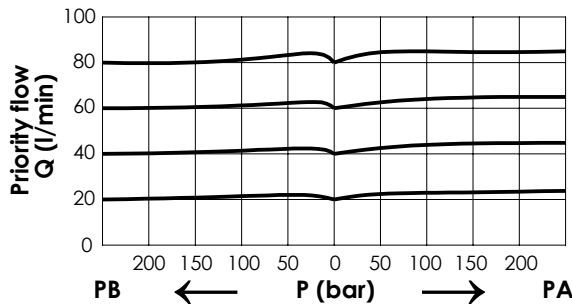
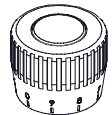


SPECIFICATIONS

Max. operating pressure:	210 bar
Rated flow:	90 l/min
Manifold:	Aluminium
Weight:	1,3 kg

ADJUSTMENT TYPE

Graduated handknob for flow regulation under pressure



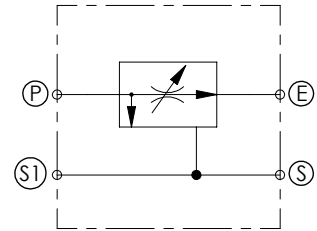
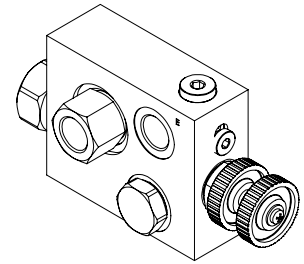
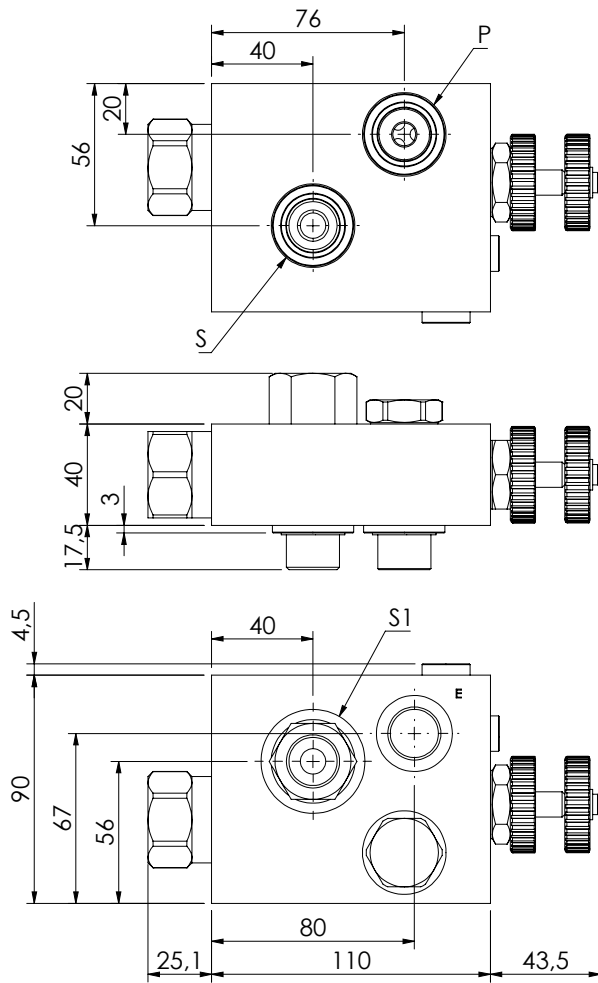
ORDERING CODES

Quick code	Description	Main ports size	Regulated flow range (l/min)	Adjustment type
MF000211	MFPT-090-RPZR-12-G12-N210	G 1/2"	0 - 12	Graduated handknob
MF000212	MFPT-090-RPZR-25-G12-N210	G 1/2"	0 - 25	Graduated handknob
MF000213	MFPT-090-RPZR-32-G12-N210	G 1/2"	0 - 32	Graduated handknob
MF000214	MFPT-090-RPZR-50-G12-N210	G 1/2"	0 - 50	Graduated handknob
MF000215	MFPT-090-RPZR-63-G12-N210	G 1/2"	0 - 63	Graduated handknob
MF000216	MFPT-090-RPZR-70-G12-N210	G 1/2"	0 - 70	Graduated handknob
MF000217	MFPT-090-RPZR-80-G12-N210	G 1/2"	0 - 80	Graduated handknob

FLOW REGULATOR

MFCT-090-RVTN

**3 WAYS COMPENSATED
FLOW REGULATOR**



SPECIFICATIONS

Max. operating pressure:	210 bar
Rated flow:	90 l/min
Manifold:	Aluminium
Weight:	1,65 kg

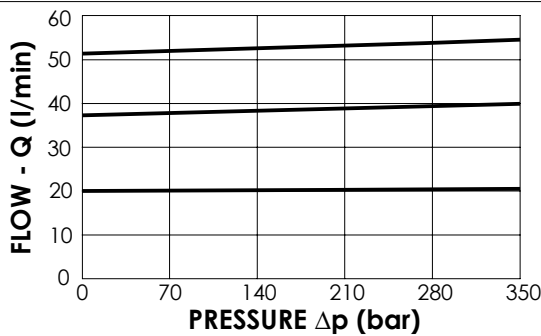
ADJUSTMENT OPTIONS



Handknob and locknut

NOTES

Designed for DANFOSS motors OMP-OMR series.



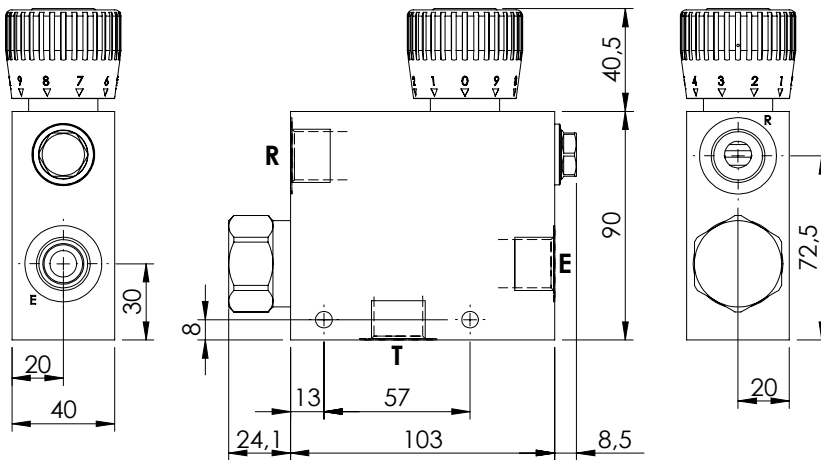
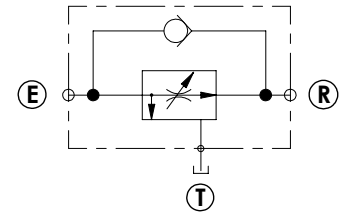
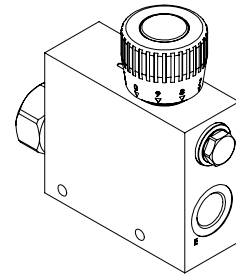
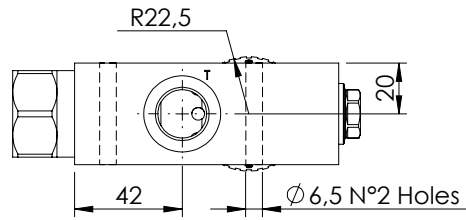
ORDERING CODES

Quick code	Description	Main ports size	Max. Pressure (Bar)	Max. reg.flow (l/min)	Max. inlet flow (l/min)	Adjustment options
MF000373	MFCT-090-RVTN-55-G12-N210	G1/2"	210	55	90	Handknob and locknut

FLOW REGULATOR

MFCT-090-VPZR

**3 WAYS COMPENSATED
WITH CHECK VALVE**

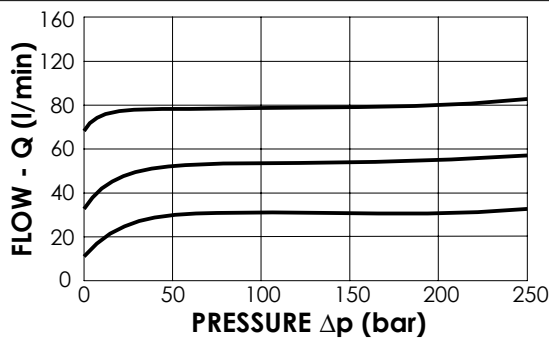
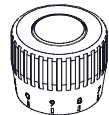


SPECIFICATIONS

Max. operating pressure:	210 bar
Rated flow:	90 l/min
Manifold:	Aluminium
Weight:	1,4 kg

ADJUSTMENT TYPE

Graduated handknob for flow regulation under pressure



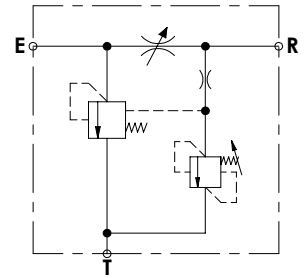
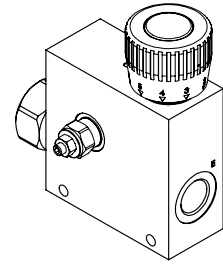
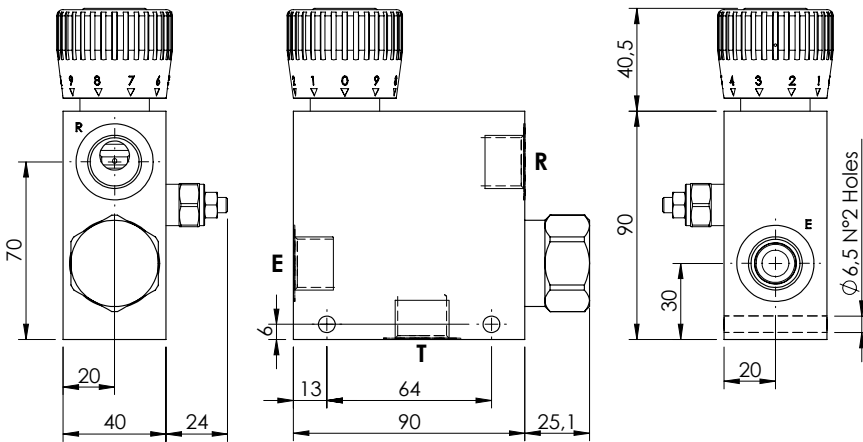
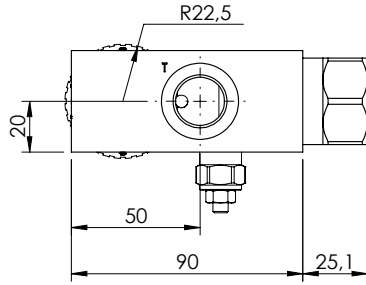
ORDERING CODES

Quick code	Description	Main ports size	Regulated flow range (l/min)	Adjustment type
MF000202	MFCT-090-VPZR-06-G12-N210	G 1/2"	0 - 6	Graduated handknob
MF000203	MFCT-090-VPZR-12-G12-N210	G 1/2"	0 - 12	Graduated handknob
MF000204	MFCT-090-VPZR-25-G12-N210	G 1/2"	0 - 25	Graduated handknob
MF000205	MFCT-090-VPZR-32-G12-N210	G 1/2"	0 - 32	Graduated handknob
MF000206	MFCT-090-VPZR-50-G12-N210	G 1/2"	0 - 50	Graduated handknob
MF000207	MFCT-090-VPZR-63-G12-N210	G 1/2"	0 - 63	Graduated handknob
MF000208	MFCT-090-VPZR-70-G12-N210	G 1/2"	0 - 70	Graduated handknob
MF000209	MFCT-090-VPZR-80-G12-N210	G 1/2"	0 - 80	Graduated handknob

FLOW REGULATOR

MFCT-090-LPZR

**3 WAYS COMPENSATED
WITH RELIEF VALVE**

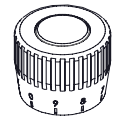


SPECIFICATIONS

Max. operating pressure:	210 bar
Rated flow:	90 l/min
Manifold:	Aluminium
Weight:	0,93 kg

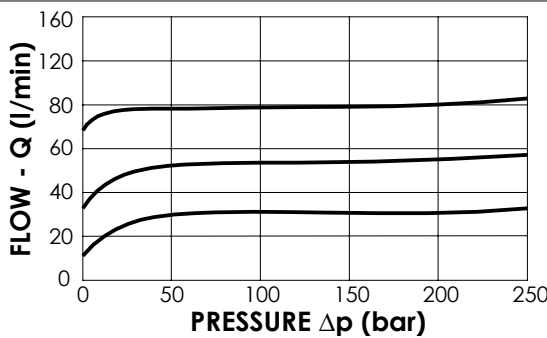
ADJUSTMENT TYPE

Graduated handknob for flow regulation under pressure



RELIEF VALVE

Setting range:	35 - 210 bar
Standard setting:	210 bar



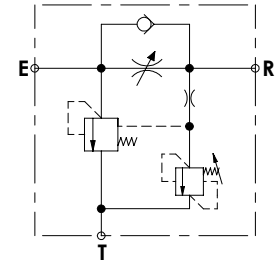
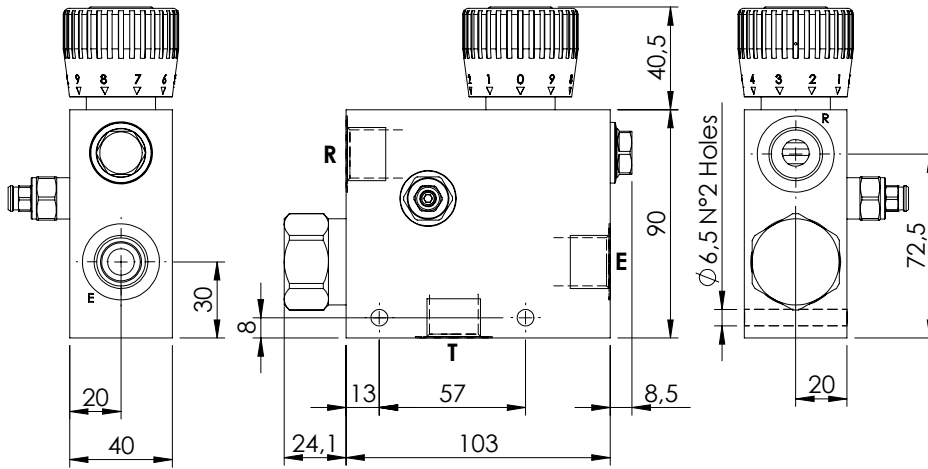
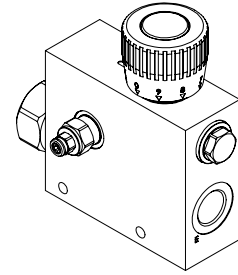
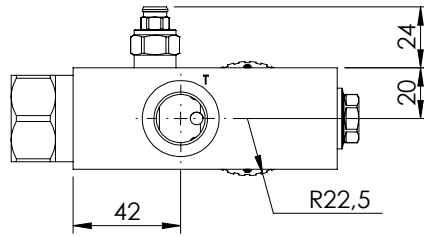
ORDERING CODES

Quick code	Description	Main ports size	Regulated flow range (l/min)	Adjustment type
MF000218	MFCT-090-LPZR-06-G12-N210	G 1/2"	0 - 6	Graduated handknob
MF000219	MFCT-090-LPZR-12-G12-N210	G 1/2"	0 - 12	Graduated handknob
MF000220	MFCT-090-LPZR-25-G12-N210	G 1/2"	0 - 25	Graduated handknob
MF000221	MFCT-090-LPZR-32-G12-N210	G 1/2"	0 - 32	Graduated handknob
MF000222	MFCT-090-LPZR-50-G12-N210	G 1/2"	0 - 50	Graduated handknob
MF000223	MFCT-090-LPZR-63-G12-N210	G 1/2"	0 - 63	Graduated handknob
MF000224	MFCT-090-LPZR-70-G12-N210	G 1/2"	0 - 70	Graduated handknob
MF000225	MFCT-090-LPZR-80-G12-N210	G 1/2"	0 - 80	Graduated handknob

FLOW REGULATOR

MFCT-090-TPZR

**3 WAYS COMPENSATED
BY PASS CHECK VALVE
RELIEF VALVE**

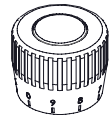


SPECIFICATIONS

Max. operating pressure:	210 bar
Rated flow:	90 l/min
Manifold:	Aluminium
Weight:	1,44 kg

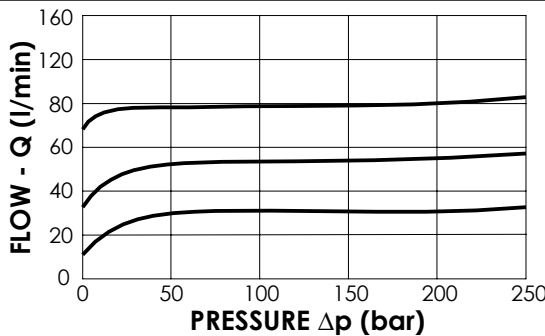
ADJUSTMENT TYPE

Graduated handknob for flow regulation under pressure



NOTES

Setting range: 35 - 210 bar
Standard setting: 210 bar



ORDERING CODES

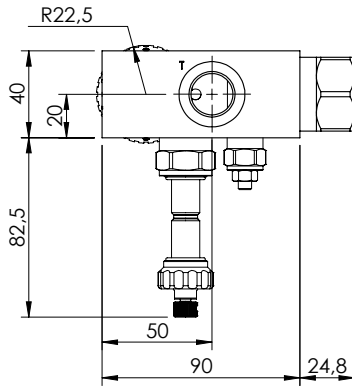
Quick code	Description	Main ports size	Regulated flow range (l/min)	Adjustment type
MF000226	MFCT-090-TPZR-06-G12-N210	G 1/2"	0 - 6	Graduated handknob
MF000227	MFCT-090-TPZR-12-G12-N210	G 1/2"	0 - 12	Graduated handknob
MF000228	MFCT-090-TPZR-25-G12-N210	G 1/2"	0 - 25	Graduated handknob
MF000229	MFCT-090-TPZR-32-G12-N210	G 1/2"	0 - 32	Graduated handknob
MF000230	MFCT-090-TPZR-50-G12-N210	G 1/2"	0 - 50	Graduated handknob
MF000231	MFCT-090-TPZR-63-G12-N210	G 1/2"	0 - 63	Graduated handknob
MF000232	MFCT-090-TPZR-70-G12-N210	G 1/2"	0 - 70	Graduated handknob
MF000233	MFCT-090-TPZR-80-G12-N210	G 1/2"	0 - 80	Graduated handknob

FLOW REGULATOR

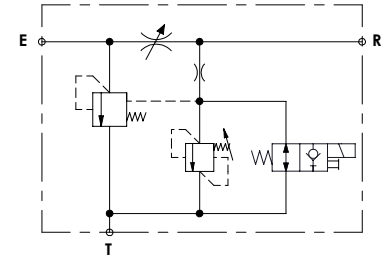
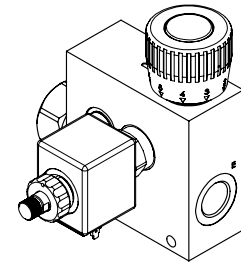
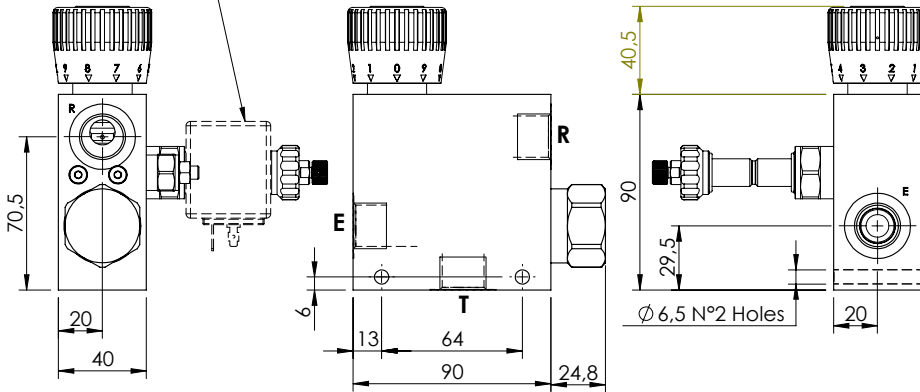


MFCT-090-MPTR

**3 WAYS COMPENSATED
WITH RELIEF VALVE AND
ELECTRIC UNLOADING**



M7 coil type to be ordered separately

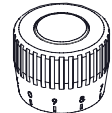


SPECIFICATIONS

Max. operating pressure:	210 bar
Rated flow:	90 l/min
Manifold:	Aluminium
Weight:	0,93 kg

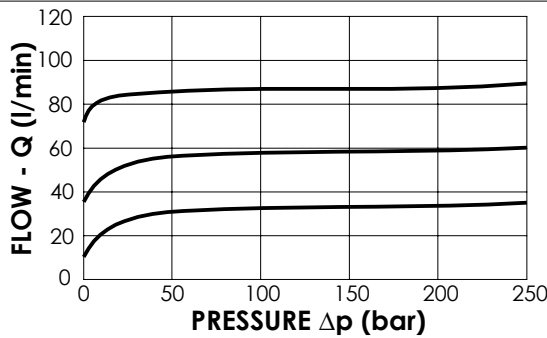
ADJUSTMENT TYPE

Graduated handknob for flow regulation under pressure



RELIEF VALVE

Setting range:	35 - 210 bar
Standard setting:	210 bar



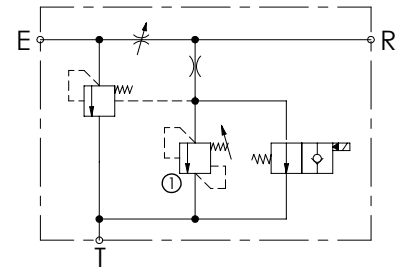
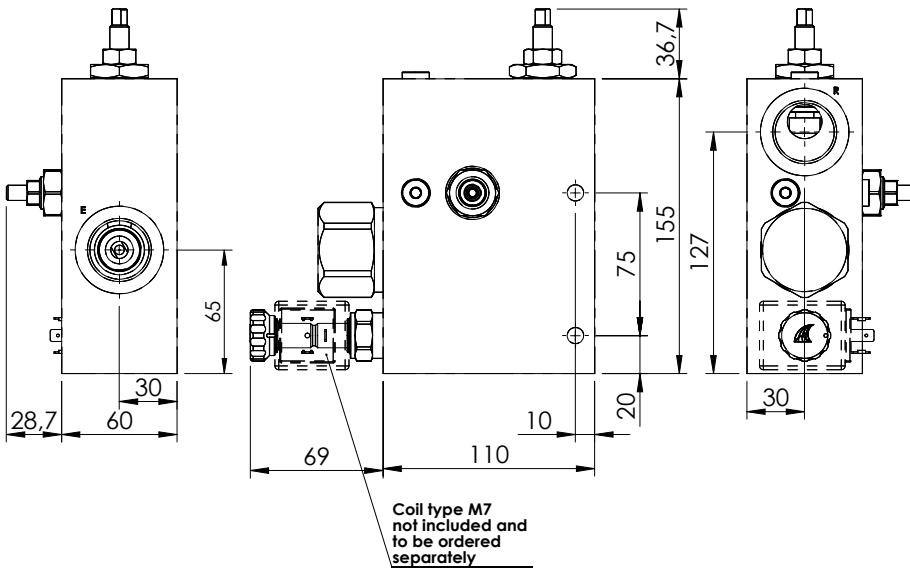
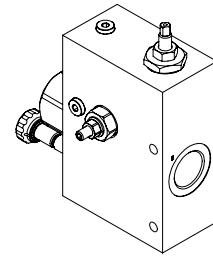
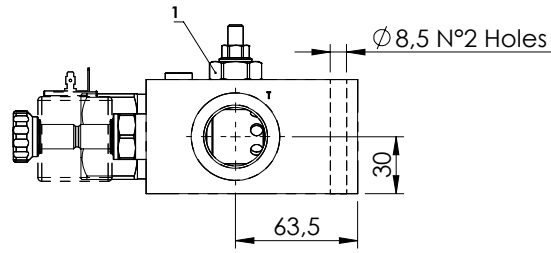
ORDERING CODES

Quick code	Description	Main ports size	Regulated flow range (l/min)	Adjustment type
MF000298	MFCT-090-MPTR-06-G12-N210	G 1/2"	0 - 6	Graduated handknob
MF000299	MFCT-090-MPTR-12-G12-N210	G 1/2"	0 - 12	Graduated handknob
MF000300	MFCT-090-MPTR-25-G12-N210	G 1/2"	0 - 25	Graduated handknob
MF000301	MFCT-090-MPTR-32-G12-N210	G 1/2"	0 - 32	Graduated handknob
MF000302	MFCT-090-MPTR-50-G12-N210	G 1/2"	0 - 50	Graduated handknob
MF000303	MFCT-090-MPTR-63-G12-N210	G 1/2"	0 - 63	Graduated handknob
MF000304	MFCT-090-MPTR-70-G12-N210	G 1/2"	0 - 70	Graduated handknob
MF000305	MFCT-090-MPTR-80-G12-N210	G 1/2"	0 - 80	Graduated handknob

FLOW REGULATOR

MFCT-280-MVTR

**3 WAYS COMPENSATED
WITH RELIEF VALVE AND
ELECTRIC UNLOADING**



SPECIFICATIONS

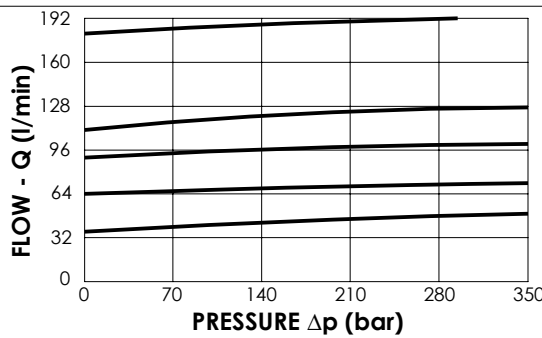
Max. operating pressure:	250 bar
Rated flow:	280 l/min
Regulated flow:	190 l/min
Manifold:	Aluminium
Weight:	3,24 kg
Coil:	M7

ADJUSTMENT OPTIONS



NOTES

-For options see pag. 22.00.000.



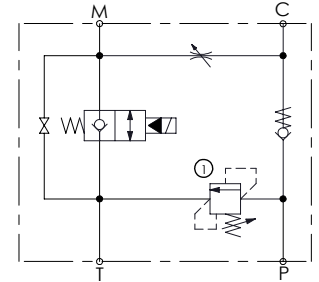
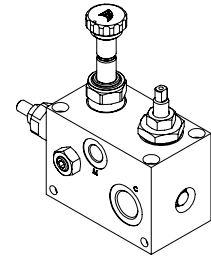
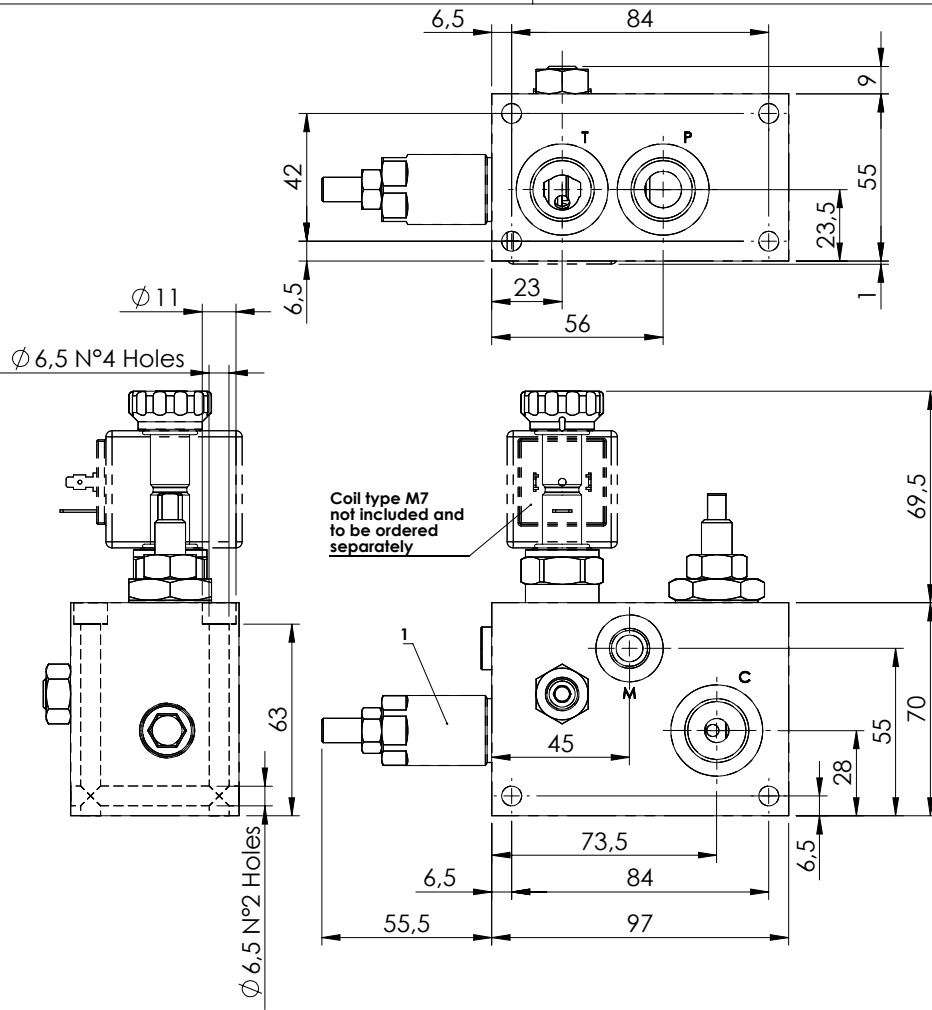
ORDERING CODES

Quick code	Description	Main ports size	Standard setting (bar, Q=l/min)	Adjustment range (bar)	Pressure increase (bar)
MF000143	MFCT-280-MVTR-19-G10-N250	R,E,T: G 1"	240	140-350	142

FLOW REGULATOR

BPNN-025-LLEU

SOLENOID OPERATED VALVES
STANDARD INTEGRATED CIRCUITS



SPECIFICATIONS

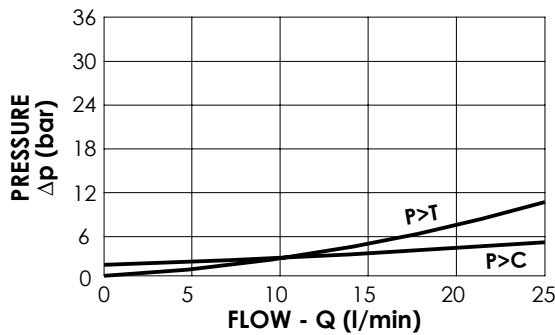
Max. operating pressure:	350 bar
Rated flow:	25 l/min
Manifold:	Aluminium
Weight:	1,3 kg
Coil:	M7

ADJUSTMENT OPTIONS

Handknob and locknut	Screw and locknut	Graduated handknob

NOTES

-For options see pag. 22.00.000.



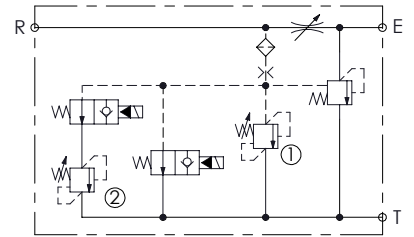
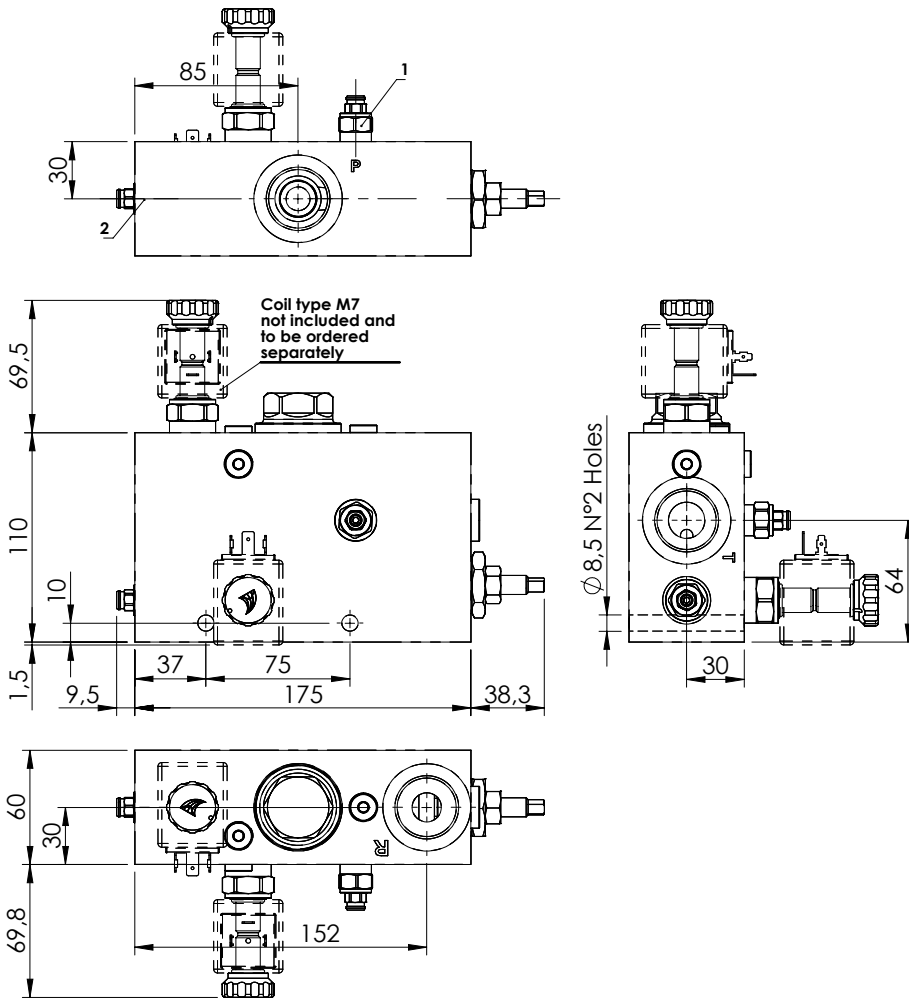
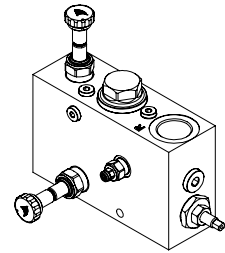
ORDERING CODES

Quick code	Description	Main ports size	Standard setting (bar, Q=5 l/min)	Adjust. range (bar)	Pressure increase (bar)	Adjust. options
BP000081	BPNN-025-LLEU-G12-N200	P,T,C:G1/2" M:G1/4"	200	50-210	42	Screw and locknut

FLOW REGULATOR

MFCT-150-LHTR

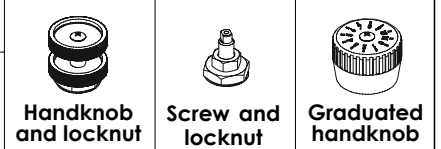
**3 WAYS COMPENSATED
WITH RELIEF VALVE**



SPECIFICATIONS

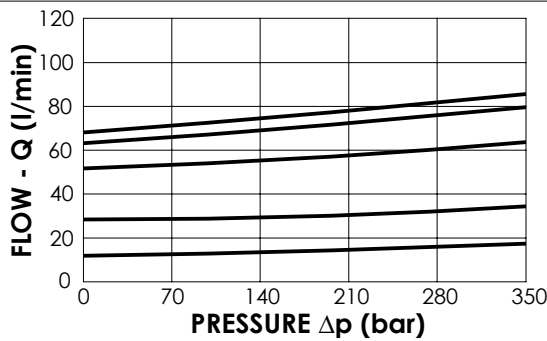
Max. operating pressure:	210 bar
Rated flow:	150 l/min
Regulated Flow:	90 l/min
Manifold:	Aluminium
Weight:	3,48 kg
Coil:	M7

ADJUSTMENT OPTIONS



NOTES

-For options see pag. 22.00.000.



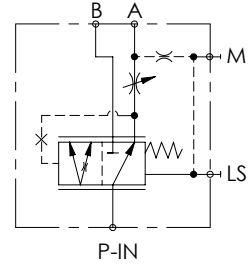
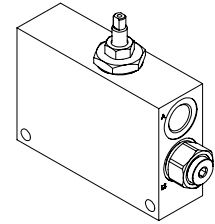
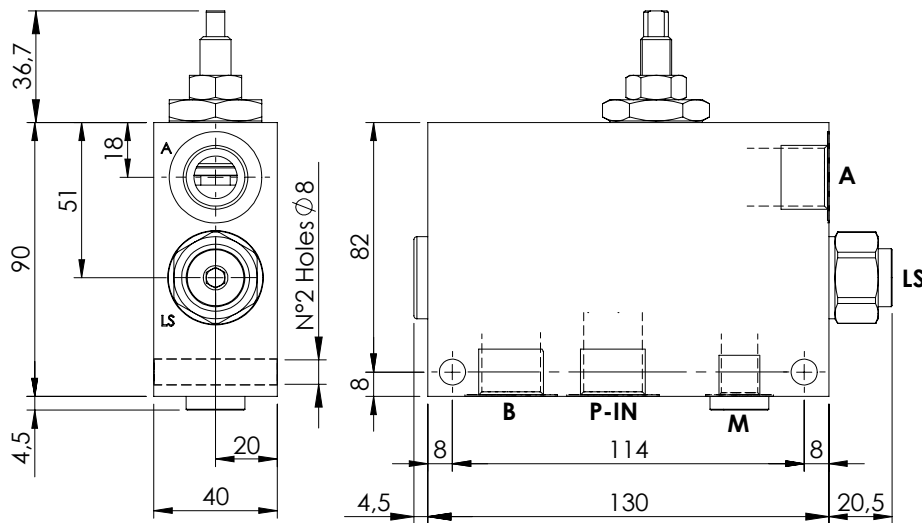
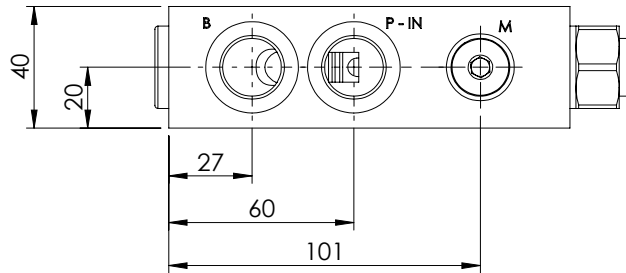
ORDERING CODES

Quick code	Description	Main ports size	Standard setting (bar, Q=5 l/min)	Adjustment range (bar)	Pressure increase (bar/turn)
MF000344	MFCT-150-LHTR-90-G10-N210	R,E,T: G 1"	① 170 ② 150	① 100-200 ② 100-200	① 75 ② 75

FLOW REGULATOR

MFPT-100-RHAR

**PRESSURE COMPENSATED
PRIORITY FLOW REGULATOR**



SPECIFICATIONS

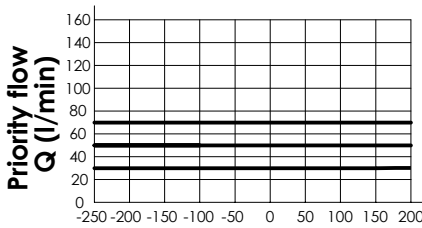
Max. operating pressure:	350 bar
Rated flow:	100 l/min
Manifold:	Steel
Weight:	3,38 kg

ADJUSTMENT OPTIONS

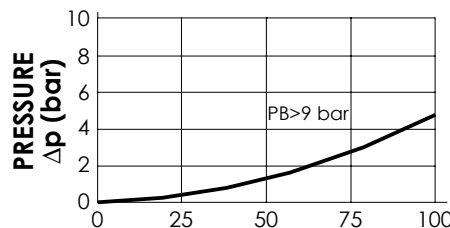


NOTES

- For correct operation 8-9 bar must be present in port A. For open centre or low pressure systems a 9 bar check valve should be fitted in port A, see page 61.
- Spool switching can be influenced by flexing or stressing the valve body. It is recommended to fit spacers on the mounting bolts between the valve and the mounting surface.
- For options see pag. 22.00.000.



PB > PA ← PA - PB → PA > PB
(bar)



FLOW - Q (l/min)

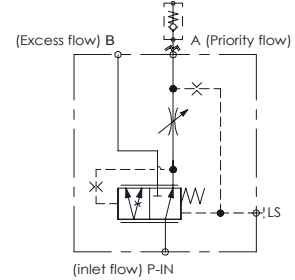
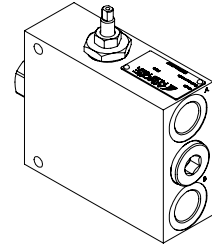
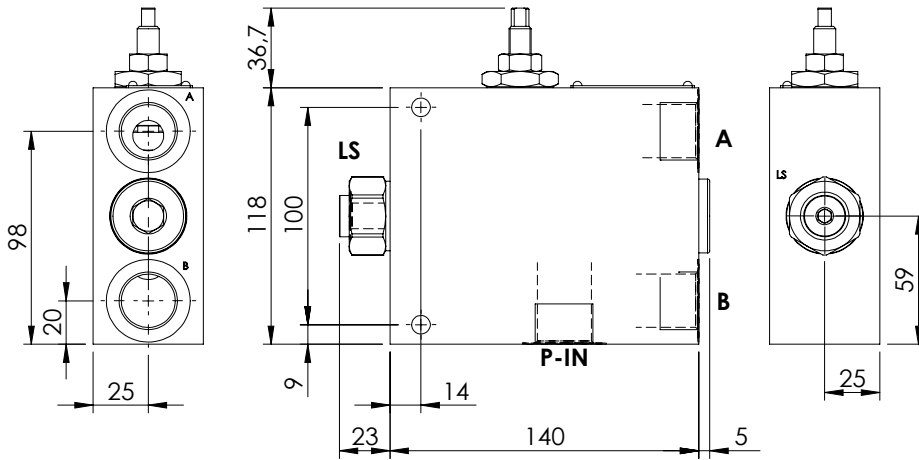
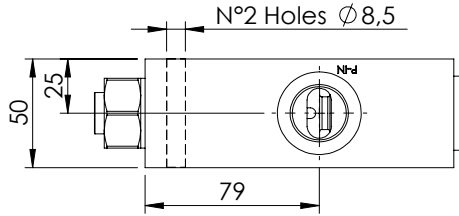
ORDERING CODES

Quick code	Description	Main ports size	Max. inlet flow (l/min)	Max. regulated flow (l/min)	Adjustment options
MF000069	MFPT-100-RHAR-85-G12-N350	P-IN, A, B: G1/2" LS, M: G1/4"	100	85	Screw and locknut

FLOW REGULATOR

MFPT-200-RHAR

PRESSURE COMPENSATED PRIORITY



SPECIFICATIONS

Max. operating pressure:	350 bar
Rated flow:	200 l/min
Regulated Flow:	1-140 l/min
Manifold:	Zinc plated steel
Weight:	4,9 kg

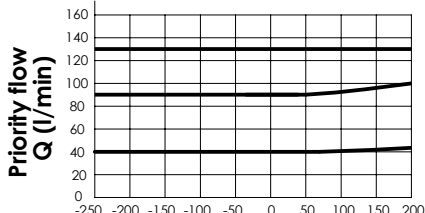
ADJUSTMENT OPTIONS



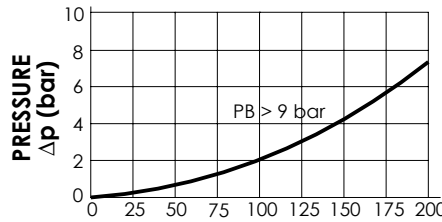
Screw and locknut

NOTES

-For options see pag. 22.00.000.



PB > PA ← PA - PB → PA > PB (bar)



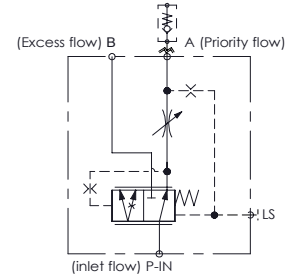
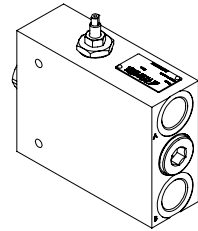
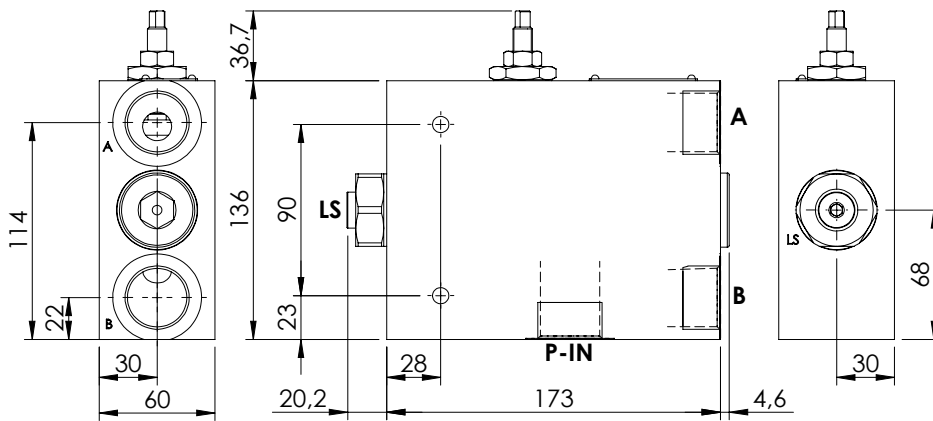
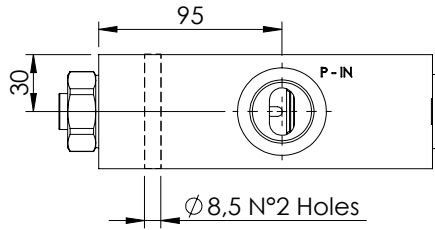
ORDERING CODES

Quick code	Description	Main ports size	Adjustment options
MF000141	MFPT-200-RHAR-14-G34-N350	P-IN,A,B: G 3/4" LS: G 1/4"	Screw and locknut

FLOW REGULATOR

MFPT-300-RHAR

**PRESSURE COMPENSATED
PRIORITY**



SPECIFICATIONS

Max. operating pressure:	350 bar
Rated flow:	300 l/min
Regulated Flow:	1-220 l/min
Manifold:	Zinc plated steel
Weight:	4,9 kg

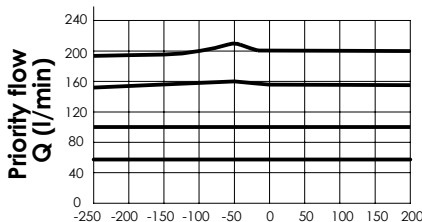
ADJUSTMENT OPTIONS



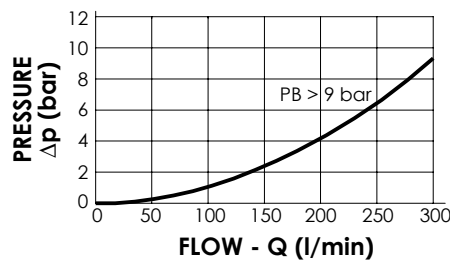
Screw and locknut

NOTES

-For options see pag. 22.00.000.



PB > PA ← PA - PB → PA > PB (bar)



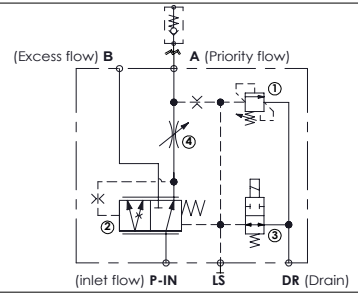
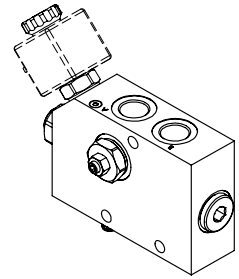
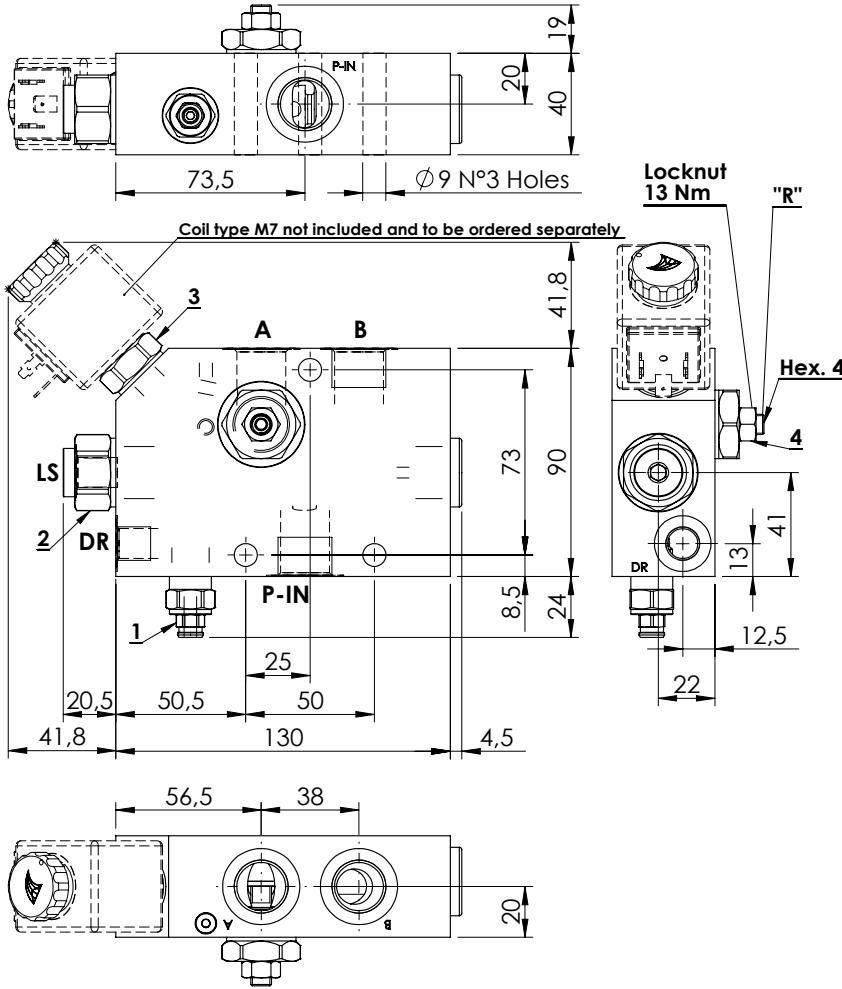
ORDERING CODES

Quick code	Description	Main ports size	Adjustment options
MF000283	MFPT-300-RHAR-20-G10-N350	P-IN,A,B: G 1" LS: G 1/4"	Screw and locknut

FLOW REGULATOR

MFPT-100-MHAR

PRESSURE COMPENSATED PRIORITY FLOW REGULATOR FOR AUXILIARY CIRCUITS

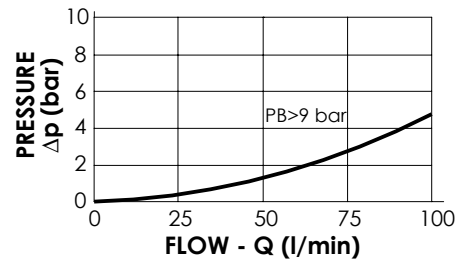
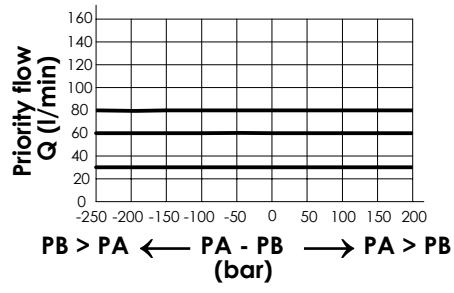


SPECIFICATIONS

Max. operating pressure:	350 bar
Rated flow:	100 l/min
Regulated Flow:	1.5 - 85 l/min
Manifold:	Zinc plated steel
Weight:	3,4 kg
Coil:	M7

NOTES

- Turn screw "R" anti-clockwise to increase regulated flow.
- Drain flow when de-energized 2 l/min.
- Max back pressure admitted on "DR" line 1,5 bar.
- For correct operation 8-9 bar must be present in port A. For open centre or low pressure systems a 9 bar check valve should be fitted in port A .
- Spool switching can be influenced by flexing or stressing the valve body. It is recommended to fit spacers on the mounting bolts between the valve and the mounting surface.
- See chapter four for suitable check valves.



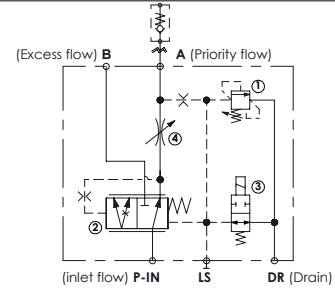
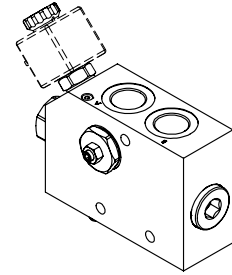
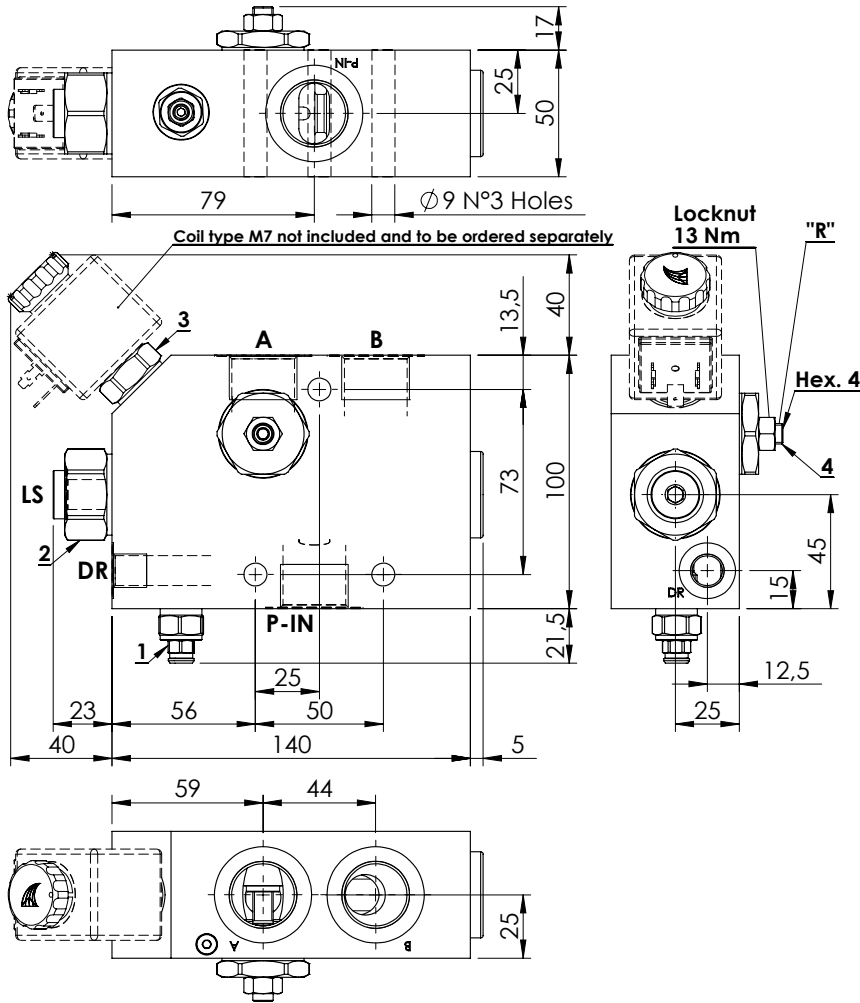
ORDERING CODES

Quick code	Description	Main ports size	Setting range (bar)	Standard setting (bar)	Adjustment (bar/turn)
MF000053	MFPT-100-MHAR-85-G12-N210	P-IN, A,B: G 1/2" DR,LS: G 1/4"	100 - 200	200	75
MF000054	MFPT-100-MHAR-85-G12-N350	P-IN, A,B: G 1/2" DR,LS: G 1/4"	150 - 350	350	165

FLOW REGULATOR

MFPT-200-MHAR

PRESSURE COMPENSATED PRIORITY FLOW REGULATOR FOR AUXILIARY CIRCUITS

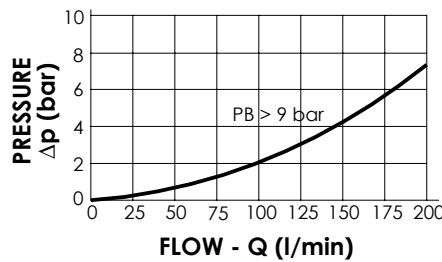
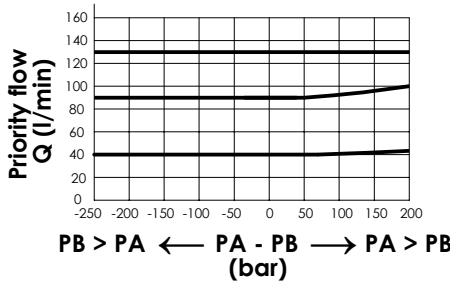


SPECIFICATIONS

Max. operating pressure:	350 bar
Rated flow:	200 l/min
Regulated Flow:	1,5 - 140 l/min
Manifold:	Zinc plated steel
Weight:	4,9 kg
Coil:	M7

NOTES

- Turn screw "R" anti-clockwise to increase regulated flow.
- Drain flow when de-energized 2 l/min.
- Max back pressure admitted on "DR" line 1,5 bar.
- For correct operation 8-9 bar must be present in port A. For open centre or low pressure systems a 9 bar check valve should be fitted in port A .
- Spool switching can be influenced by flexing or stressing the valve body. It is recommended to fit spacers on the mounting bolts between the valve and the mounting surface.
- See chapter four for suitable check valves.



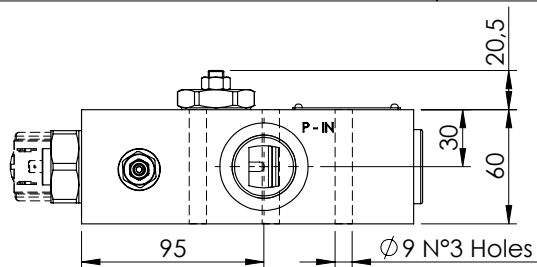
ORDERING CODES

Quick code	Description	Main ports size	Setting range (bar)	Standard setting (bar)	Adjustment (bar/turn)
MF000055	MFPT-200-MHAR-14-G34-N210	P-IN, A,B: G 3/4" DR,LS: G 1/4"	100 - 200	200	75
MF000056	MFPT-200-MHAR-14-G34-N350	P-IN, A,B: G 3/4" DR,LS: G 1/4"	150 - 350	350	165

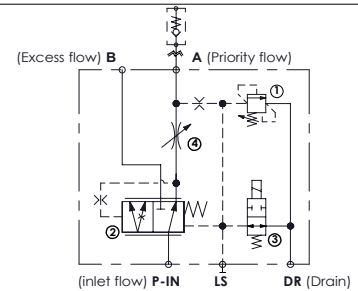
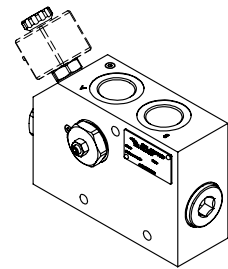
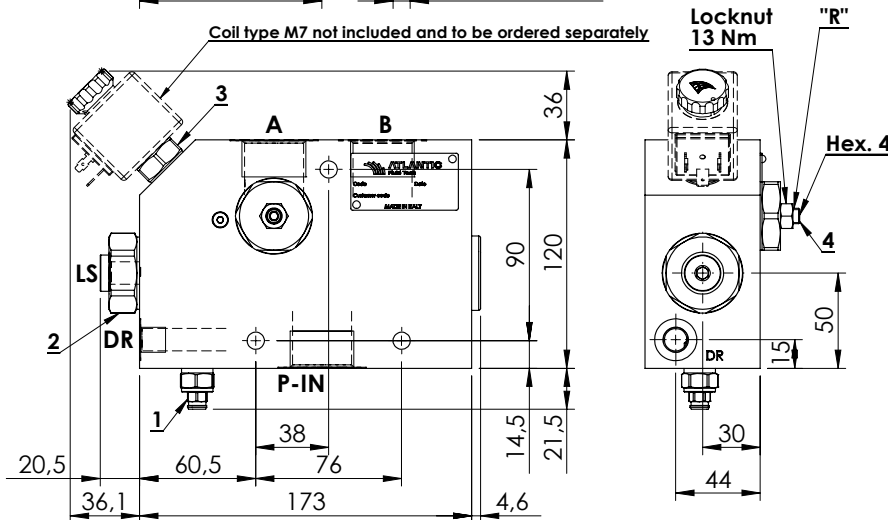
FLOW REGULATOR

MFPT-300-MHAR

PRESSURE COMPENSATED PRIORITY FLOW REGULATOR FOR AUXILIARY CIRCUITS



Coil type M7 not included and to be ordered separately

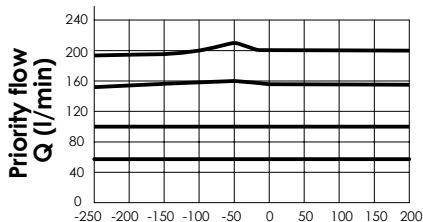


SPECIFICATIONS

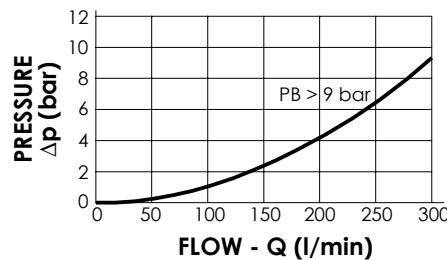
Max. operating pressure:	350 bar
Rated flow:	300 l/min
Regulated Flow:	1,5 - 220 l/min
Manifold:	Zinc plated steel
Weight:	8,6 kg
Coil:	M7

NOTES

- Turn screw "R" anti-clockwise to increase regulated flow.
- Drain flow when de-energized 2 l/min.
- Max back pressure admitted on "DR" line 1,5 bar.
- For correct operation 8-9 bar must be present in port A. For open centre or low pressure systems a 9 bar check valve should be fitted in port A .
- Spool switching can be influenced by flexing or stressing the valve body. It is recommended to fit spacers on the mounting bolts between the valve and the mounting surface.
- See chapter four for suitable check valves.



PB > PA ← PA - PB → PA > PB (bar)



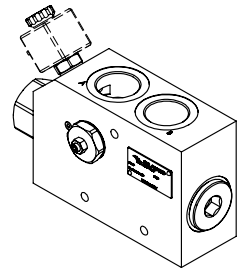
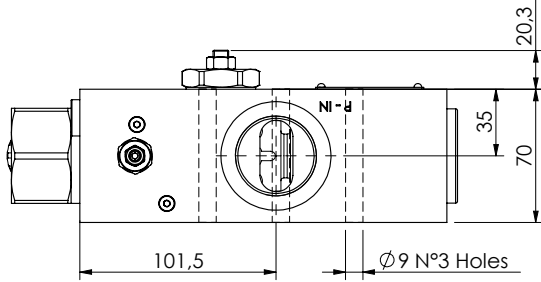
ORDERING CODES

Quick code	Description	Main ports size	Setting range (bar)	Standard setting (bar)	Adjustment (bar/turn)
MF000057	MFPT-300-MHAR-22-G10-N210	P-IN, A,B: G 1" DR,LS: G 1/4"	100 - 200	200	75
MF000058	MFPT-300-MHAR-22-G10-N350	P-IN, A,B: G 1" DR,LS: G 1/4"	150 - 350	350	165

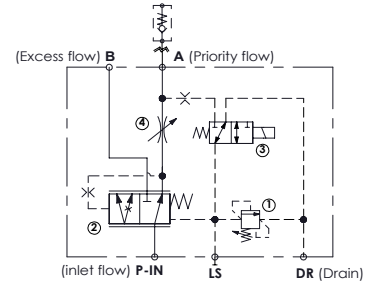
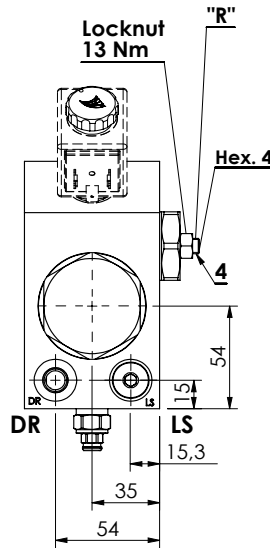
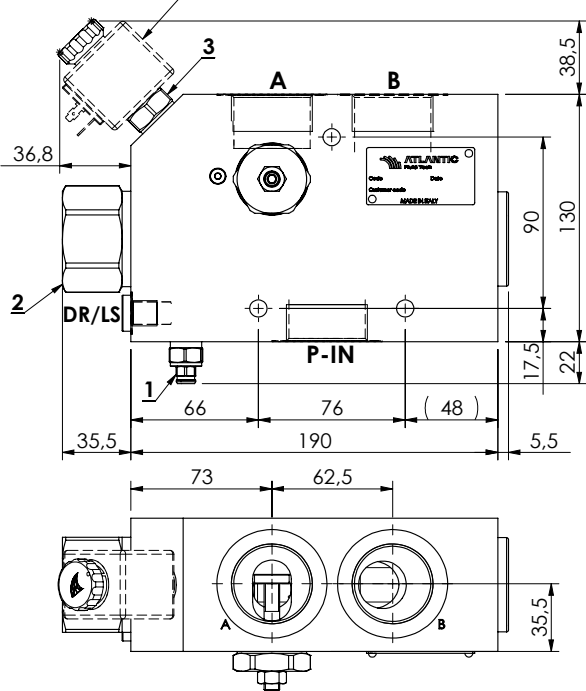
FLOW REGULATOR

MFPT-400-MHAR

PRESSURE COMPENSATED PRIORITY FLOW REGULATOR FOR AUXILIARY CIRCUITS



Coil type M7 not included and to be ordered separately

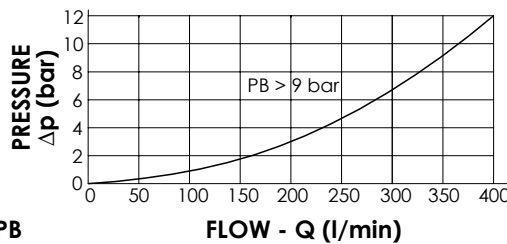
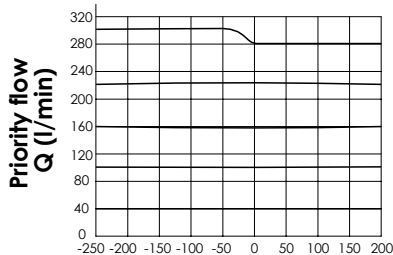


SPECIFICATIONS

Max. operating pressure:	350 bar
Rated flow:	400 l/min
Regulated Flow:	1,5 - 300 l/min
Manifold:	Zinc plated steel
Weight:	11,4 kg
Coil:	M7

NOTES

- Turn screw "R" anti-clockwise to increase regulated flow.
- Drain flow when de-energized 2,5 l/min.
- Max back pressure admitted on "DR" line 1,5 bar.
- For correct operation 8-9 bar must be present in port A. For open centre or low pressure systems a 9 bar check valve should be fitted in port A .
- Spool switching can be influenced by flexing or stressing the valve body. It is recommended to fit spacers on the mounting bolts between the valve and the mounting surface.
- See chapter four for suitable check valves.



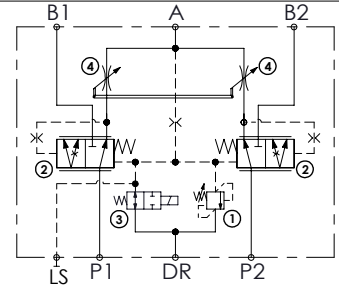
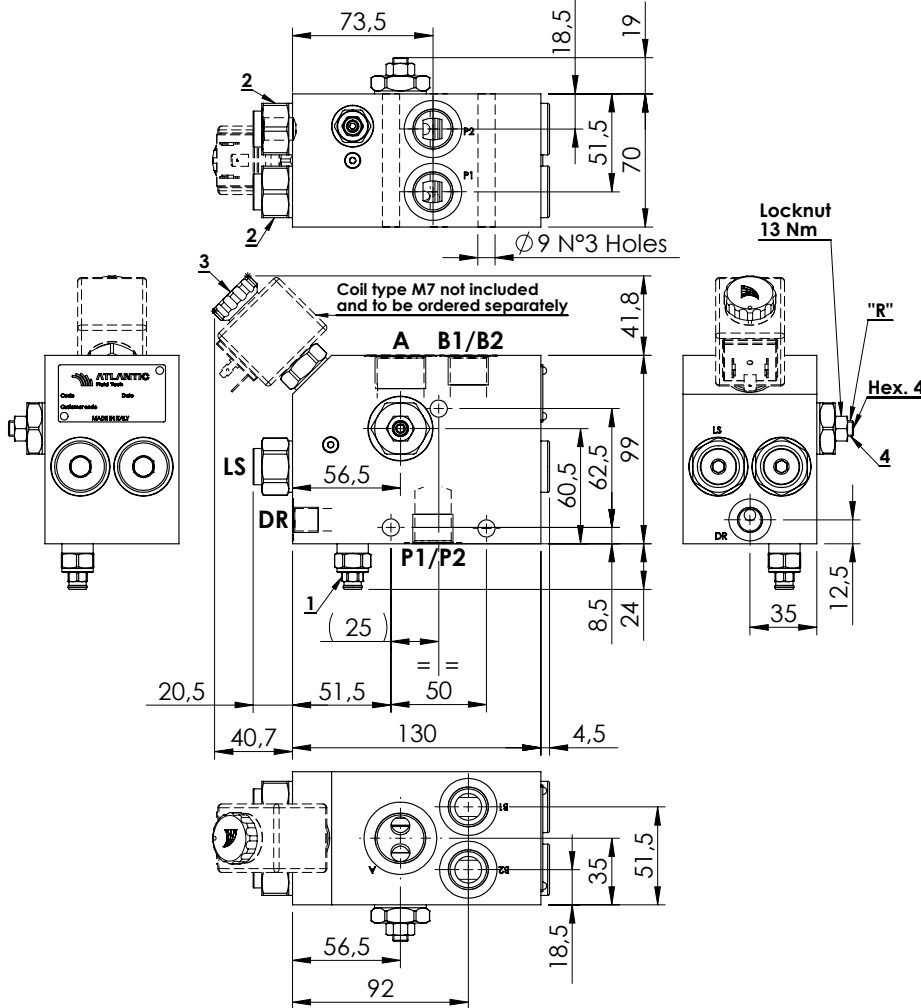
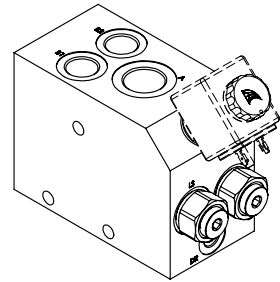
ORDERING CODES

Quick code	Description	Main ports size	Setting range (bar)	Standard setting (bar)	Adjustment (bar/turn)
MF000071	MFPT-400-MHAR-30-G11-N210	P-IN, A,B: G 1"-1/4 DR,LS: G 1/4"	100 - 200	200	75
MF000073	MFPT-400-MHAR-30-G11-N350	P-IN, A,B: G 1"-1/4 DR,LS: G 1/4"	150 - 350	350	165

FLOW REGULATOR

MFTT-100-MHAR

**PRESSURE COMPENSATED PRIORITY
TWO PUMPS SYSTEM
FLOW REGULATOR FOR
AUXILIARY CIRCUITS**

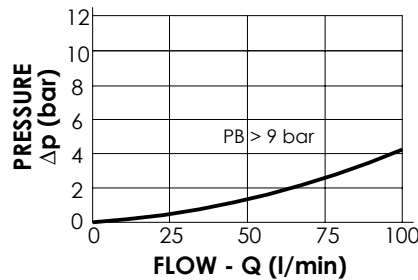
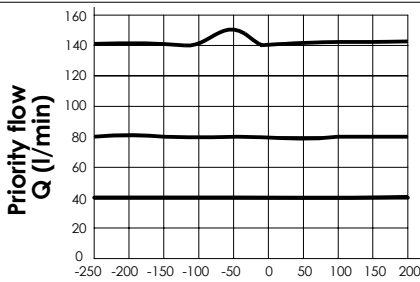


SPECIFICATIONS

Max. operating pressure:	350 bar
Rated flow:	2 x 100 l/min
Regulated Flow:	3 - 150 l/min
Manifold:	Zinc plated steel
Weight:	6,5 kg
Coil:	M7

NOTES

- Turn screw "R" anti-clockwise to increase regulated flow.
- Drain flow when de-energized 2 l/min.
- Max back pressure admitted on "DR" line 1,5 bar.
- For correct operation 8-9 bar must be present in port A. For open centre or low pressure systems a 9 bar check valve should be fitted in port A.
- Spool switching can be influenced by flexing or stressing the valve body. It is recommended to fit spacers on the mounting bolts between the valve and the mounting surface.
- See chapter four for suitable check valves.



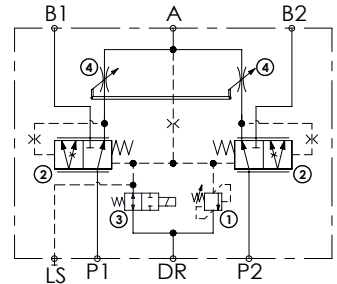
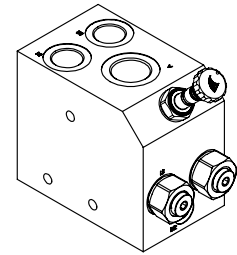
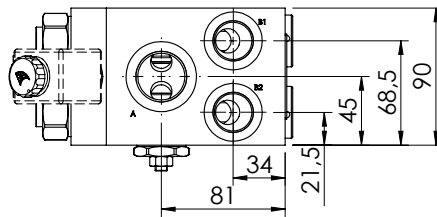
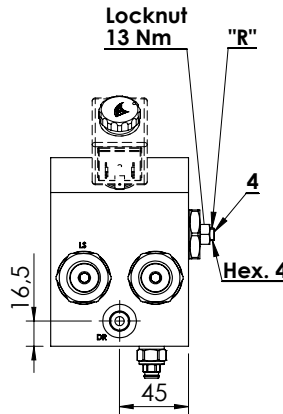
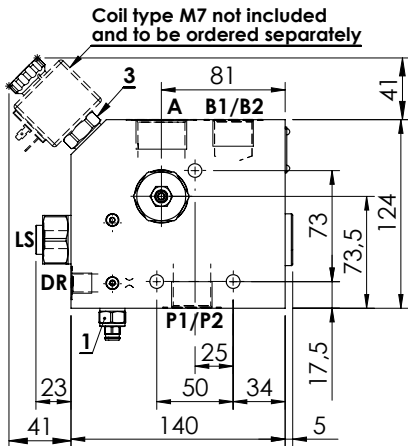
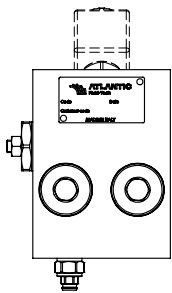
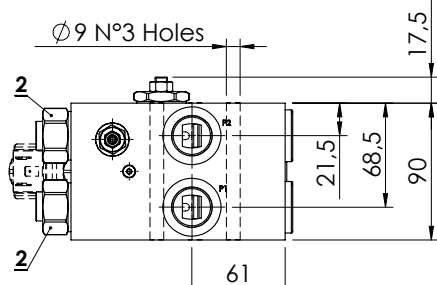
ORDERING CODES

Quick code	Description	Main ports size	Setting range (bar)	Standard setting (bar)	Adjustment (bar/turn)
MF000066	MFTT-100-MHAR-85-G12-N210	P1-P2-B1-B2: G 1/2" A: G3/4"; DR: G 1/4"	100 - 200	200	75
MF000067	MFTT-100-MHAR-85-G12-N350	P1-P2-B1-B2: G 1/2" A: G3/4"; DR: G 1/4"	150 - 350	350	165

FLOW REGULATOR

MFTT-200-MHAR

**PRESSURE COMPENSATED PRIORITY
TWO PUMPS SYSTEM
FLOW REGULATOR FOR
AUXILIARY CIRCUITS**

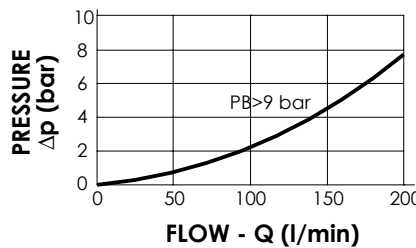
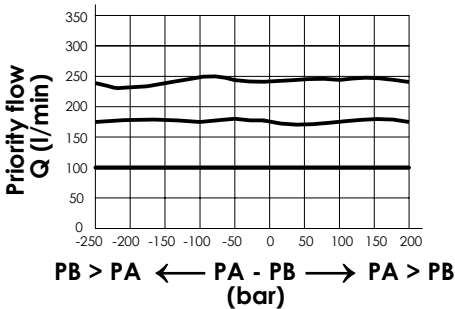


SPECIFICATIONS

Max. operating pressure:	350 bar
Rated flow:	2 x 200 l/min
Regulated Flow:	3 - 250 l/min
Manifold:	Zinc plated steel
Weight:	10,9 kg
Coil:	M7

NOTES

- Turn screw "R" anti-clockwise to increase regulated flow.
- Drain flow when de-energized 2 l/min.
- Max back pressure admitted on "DR" line 1,5 bar.
- For correct operation 8-9 bar must be present in port A. For open centre or low pressure systems a 9 bar check valve should be fitted in port A .
- Spool switching can be influenced by flexing or stressing the valve body. It is recommended to fit spacers on the mounting bolts between the valve and the mounting surface.
- See chapter four for suitable check valves.



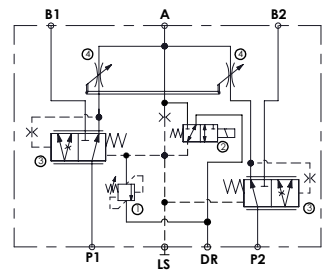
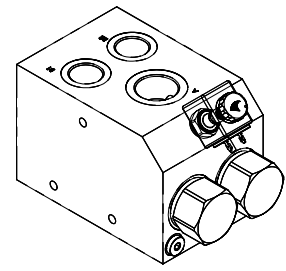
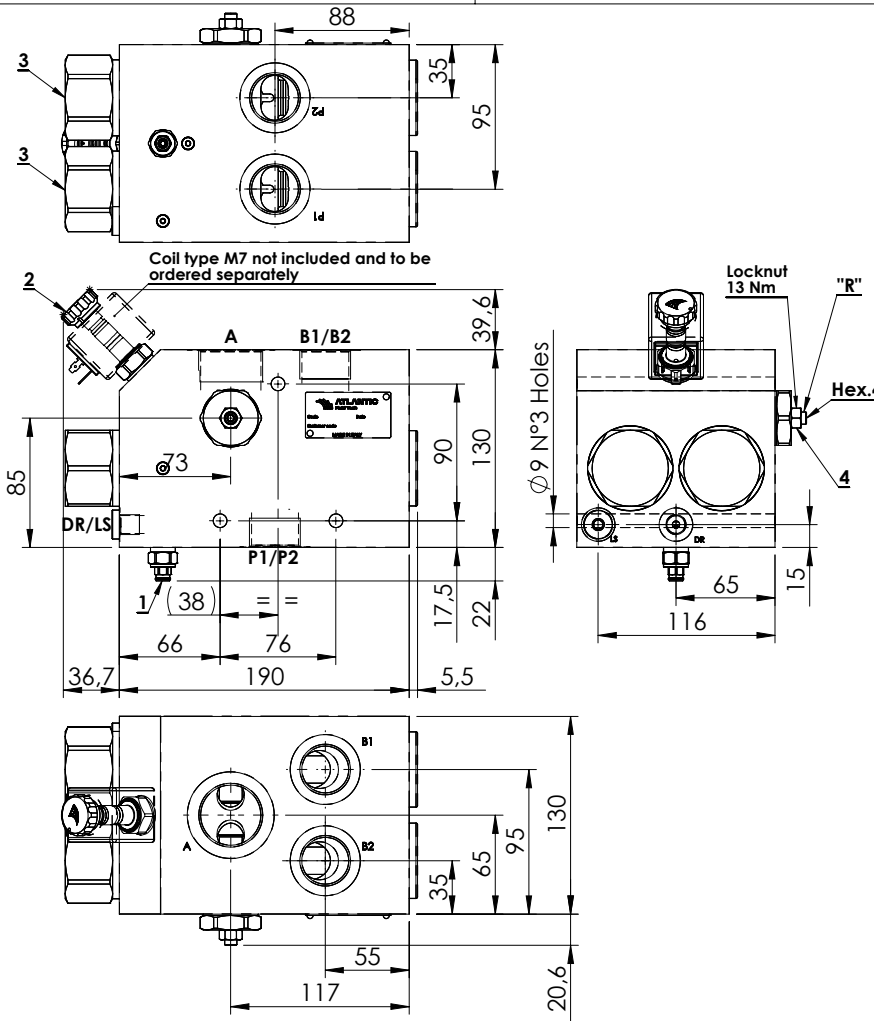
ORDERING CODES

Quick code	Description	Main ports size	Setting range (bar)	Standard setting (bar)	Adjustment (bar/turn)
MF000064	MFTT-200-MHAR-14-G34-N210	P1-P2-B1-B2: G3/4" A: G1"; T: G1/4"	100-200	200	75
MF000065	MFTT-200-MHAR-14-G34-N350	P1-P2-B1-B2: G3/4" A: G1"; T: G1/4"	150-350	350	165

FLOW REGULATOR

MFTT-300-MHAR

**PRESSURE COMPENSATED PRIORITY
TWO PUMPS SYSTEM
FLOW REGULATOR FOR
AUXILIARY CIRCUITS**

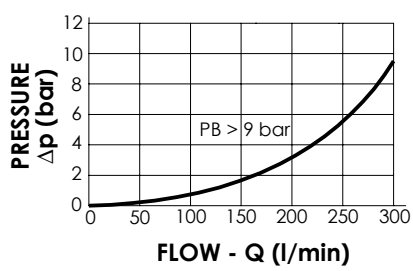
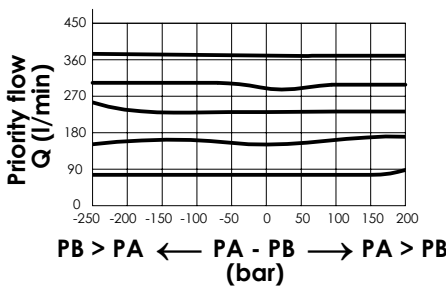


SPECIFICATIONS

Max. operating pressure:	350 bar
Rated flow:	2 x 300 l/min
Regulated Flow:	1,5 - 300 l/min
Manifold:	Zinc plated steel
Weight:	22,36 kg
Coil:	M7

NOTES

- Turn screw "R" anti-clockwise to increase regulated flow.
- Drain flow when de-energized 2 l/min.
- Max back pressure admitted on "DR" line 1,5 bar.
- For correct operation 8-9 bar must be present in port A. For open centre or low pressure systems a 9 bar check valve should be fitted in port A .
- Spool switching can be influenced by flexing or stressing the valve body. It is recommended to fit spacers on the mounting bolts between the valve and the mounting surface.
- See chapter four for suitable check valves.



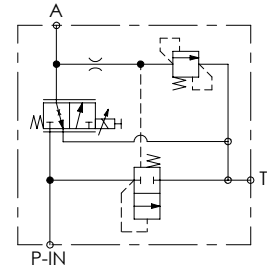
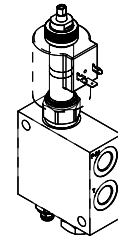
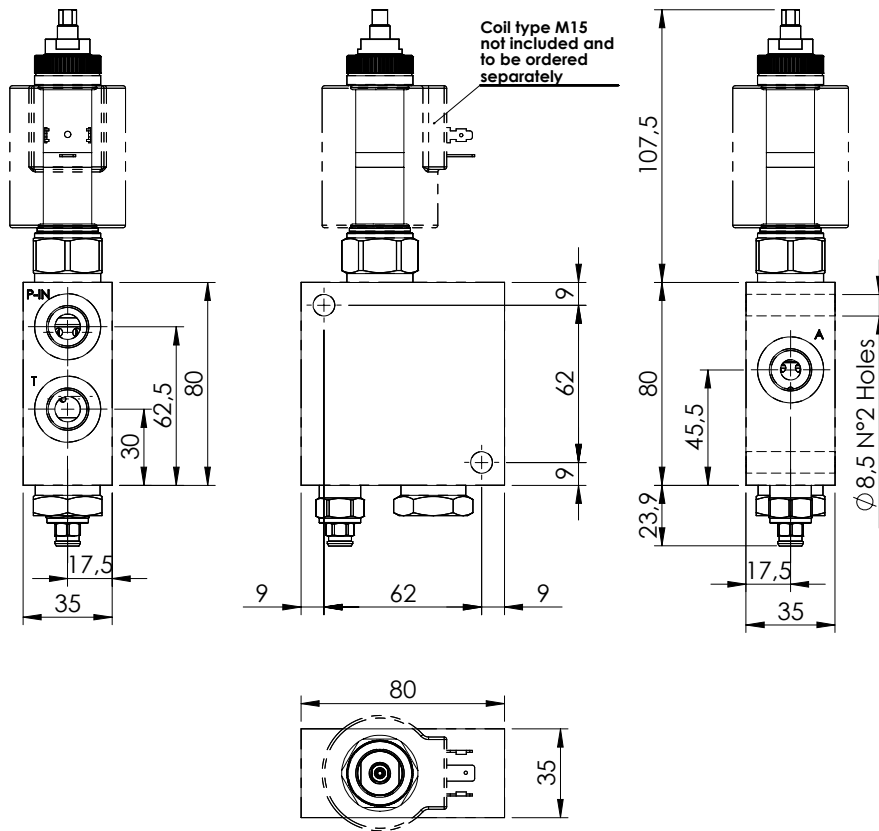
ORDERING CODES

Quick code	Description	Main ports size	Setting range (bar)	Standard setting (bar)	Adjustment (bar/turn)
MF000275	MFTT-300-MHAR-30-G11-N350	P1,P2,B1,B2: G 1" A: G 1-1/4" DR,LS: G 1/4"	120-350	350	165

FLOW REGULATOR

MFCZ-040-LSLR

**PROPORTIONAL VALVE
COMPENSATED**

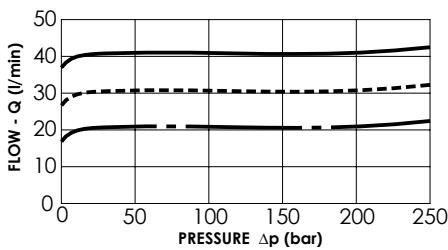


SPECIFICATIONS

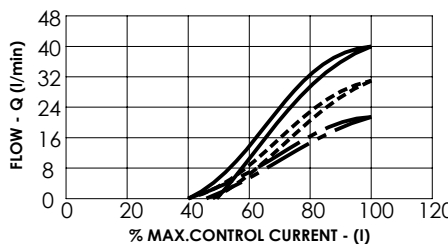
Max. operating pressure:	210 bar
Rated flow:	40 l/min
Recommended PWM range:	150-180 Hz
Weight:	0,84 kg
Manifold:	Aluminium
Coil type:	M15
Max. int. leakage:	150 cm ³ /min (@46 cst)

NOTES

- Bleed air before use
- Manual override screw type
- See chapter 18.00.000 for coil.



MF000294 3>2 ———



MF000296 3>2 - - - -

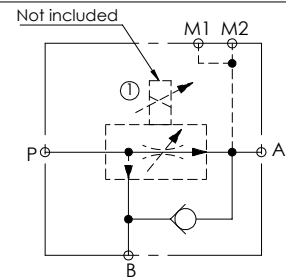
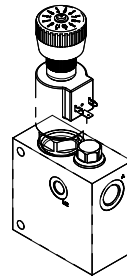
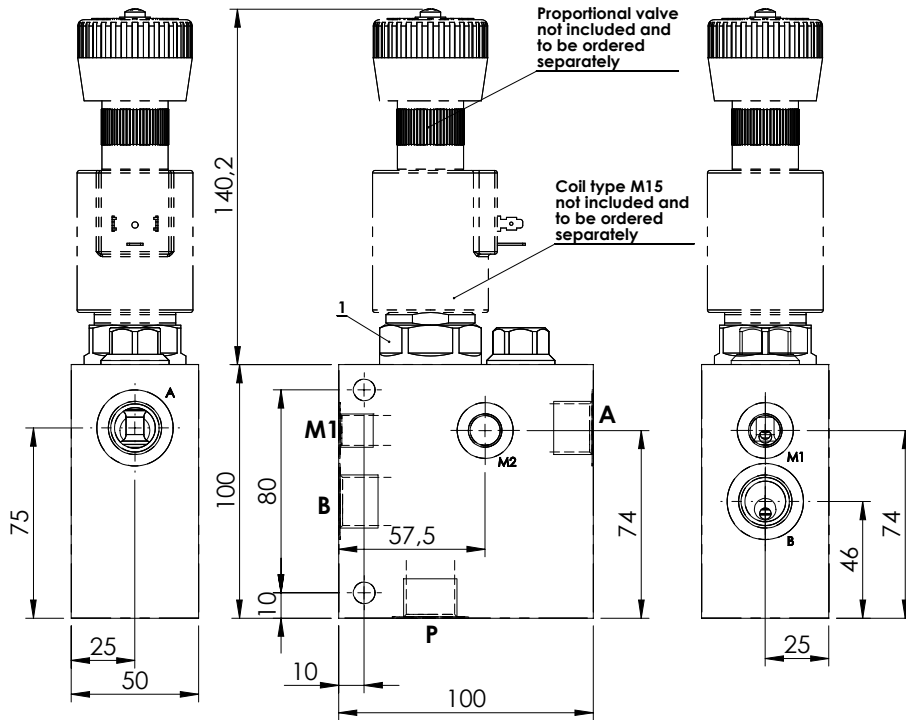
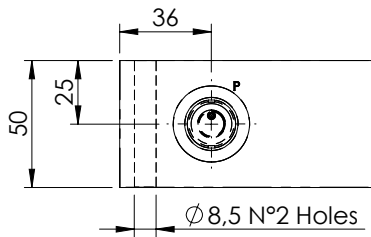
ORDERING CODES

Quick code	Description	Rated flow (l/min)	Ports	Threshold current (with 12VDC coil)	Max control current (with 12V DC coil)
MF000294	MFCZ-040-LSLR-40-G38-N210	40	G 3/8"	800 mA (+/-7%)	1600 mA (+/-7%)
MF000295	MFCZ-030-LSLR-30-G38-N210	30	G 3/8"	700 mA (+/-7%)	1500 mA (+/-7%)
MF000296	MFCZ-020-LSLR-20-G38-N210	20	G 3/8"	700 mA (+/-7%)	2400 mA (+/-7%)

FLOW REGULATOR

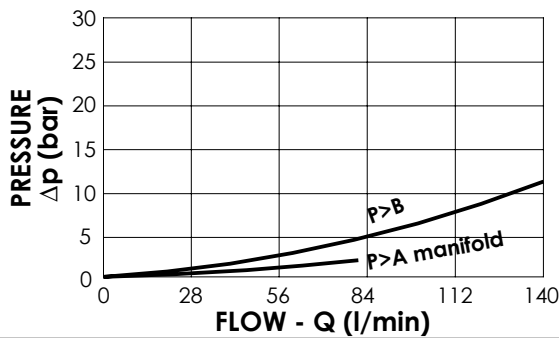
MFPC-140-AMLR

PROPORTIONAL VALVES WITH ANTICAVITATION



SPECIFICATIONS

Max. operating pressure:	320 bar
Rated flow:	140 l/min
Max regulated flow:	0 - 80 l/min
Manifold:	Aluminium
Weight:	1,1 kg
Coil type:	M15
Cavity type:	SAE-16-3N



NOTES

- See chapter 18.00.000 for coil.
- See chapter 16.00.000 for proportional valve info.

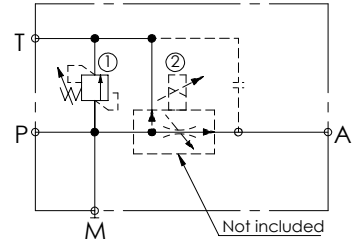
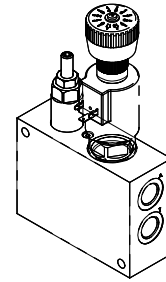
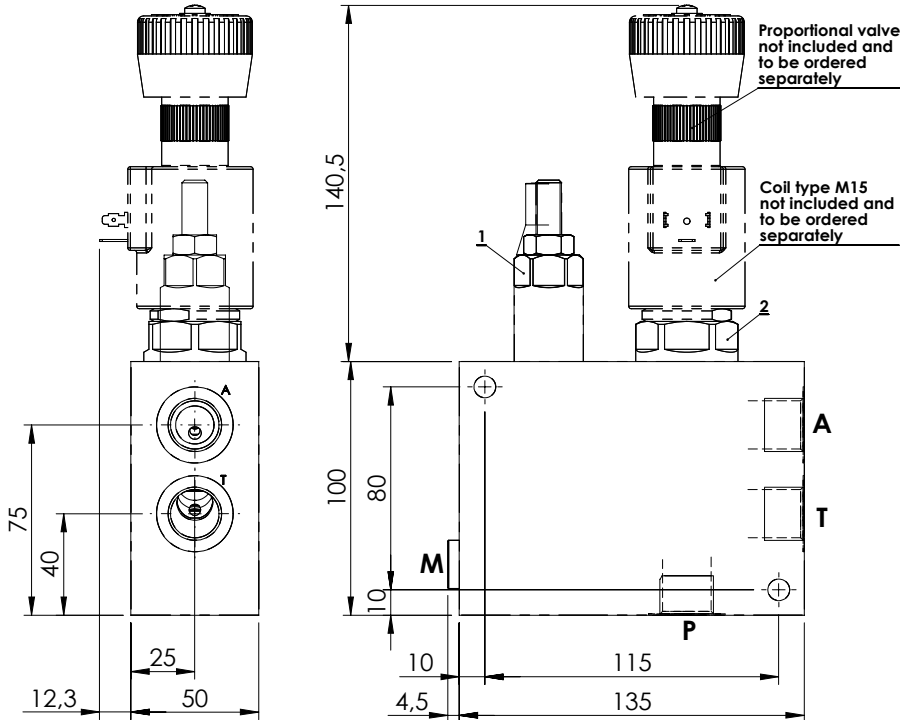
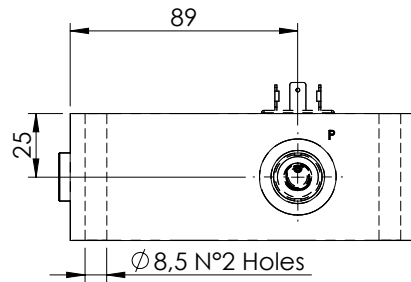
ORDERING CODES

Quick code	Description	Main ports size	Standard setting (bar, Q=5 l/min)	Adjust. range (bar)	Pressure increase (bar/turn)
MF000349	MFPC-140-AMLR-80-G12-N320	P,A,T: G1/2" M: G1/4"	200	60-210	24

FLOW REGULATOR

MFPC-140-LMLR

PROPORTIONAL VALVE WITH RELIEF



SPECIFICATIONS

Max. operating pressure:	320 bar
Rated flow:	140 l/min
Max regulated flow:	0 - 80 l/min
Manifold:	Aluminium
Weight:	1,7 kg
Coil type:	M15
Cavity type:	SAE-16-3N

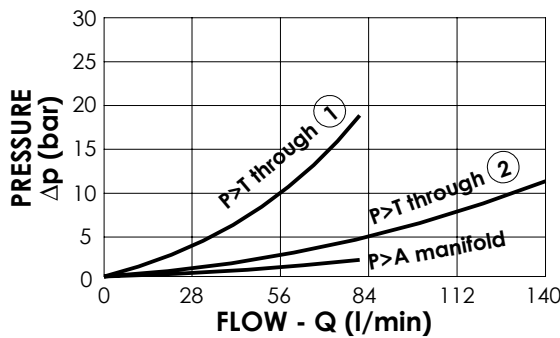
SEALING CAP

Ordering code:
AT000021



NOTES

-See chapter 18.00.000 for coil.
-See chapter 16.00.000 for proportional valve info.



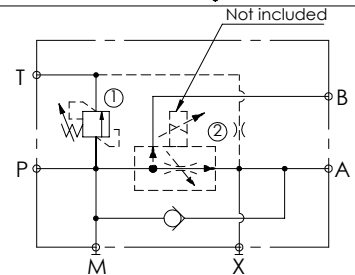
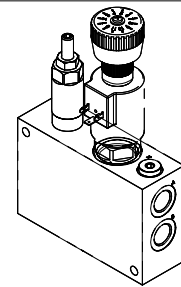
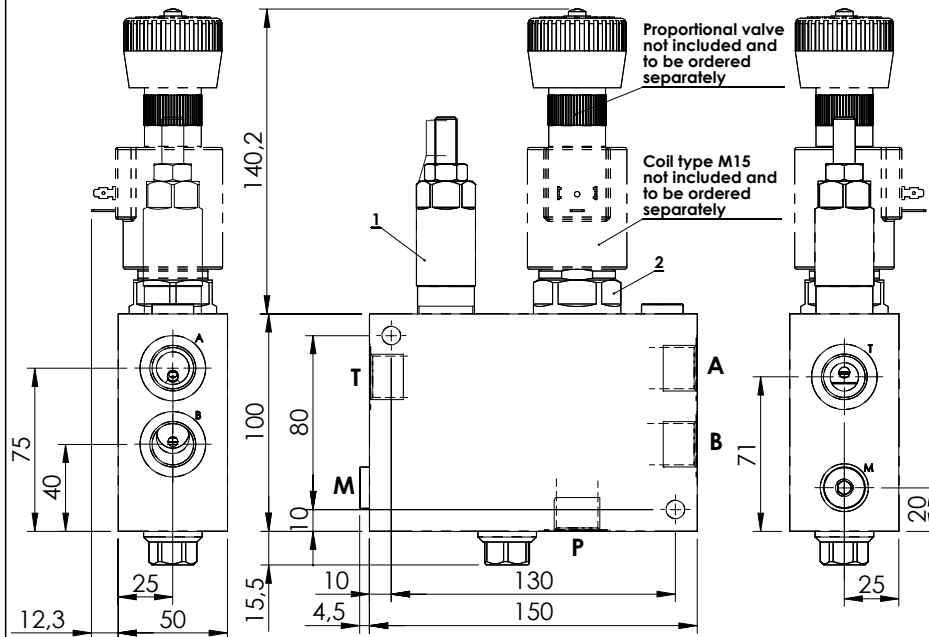
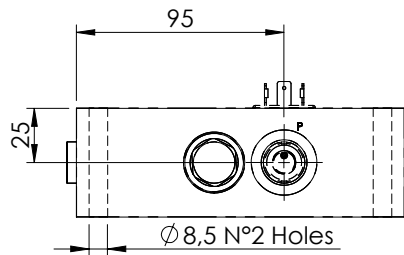
ORDERING CODES

Quick code	Description	Main ports size	Standard setting (bar, Q=5 l/min)	Adjust. range (bar)	Pressure increase (bar/turn)
MF000350	MFPC-140-LMLR-80-G12-N320	P,A,T: G1/2" M: G1/4"	200	60-210	24

FLOW REGULATOR

MFPC-140-TMLR

PROPORTIONAL VALVES WITH BYPASS CHECK WITH RELIEF

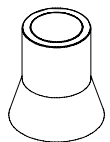


SPECIFICATIONS

Max. operating pressure:	320 bar
Rated flow:	140 l/min
Max regulated flow:	0 - 80 l/min
Manifold:	Aluminium
Weight:	2,0 kg
Coil type:	M15
Cavity type:	SAE-16-3N

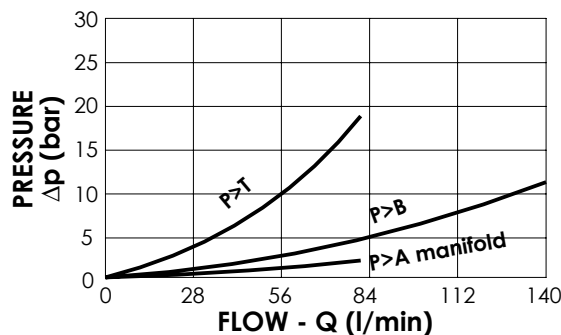
SEALING CAP

Ordering code:
AT000021



NOTES

- See chapter 18.00.000 for coil.
- See chapter 16.00.000 for proportional valve info.



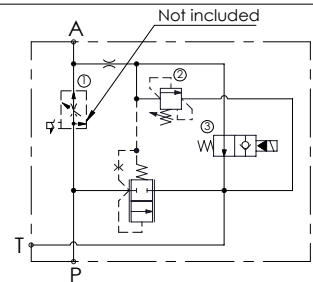
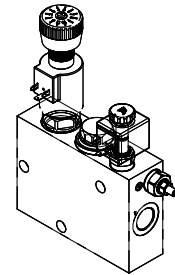
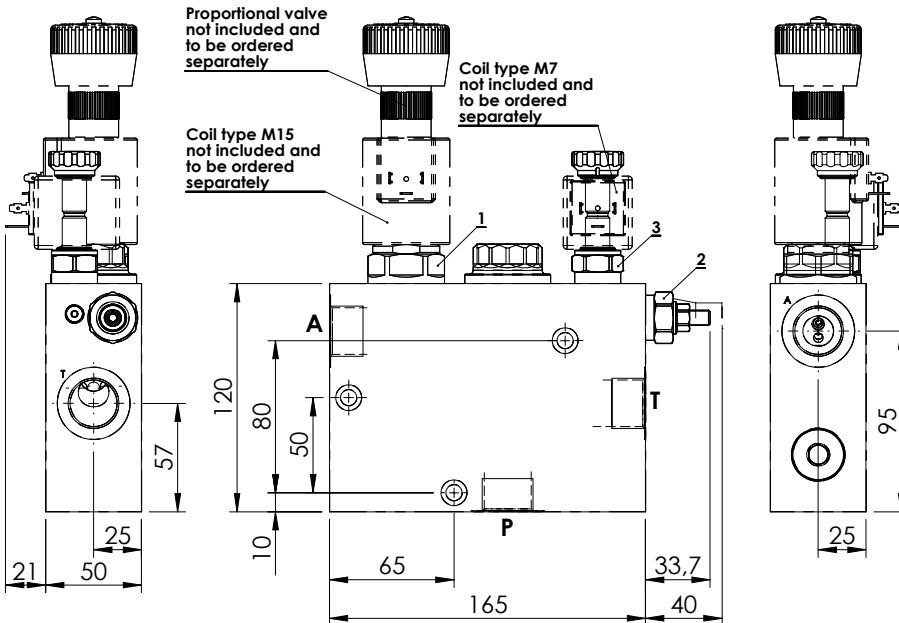
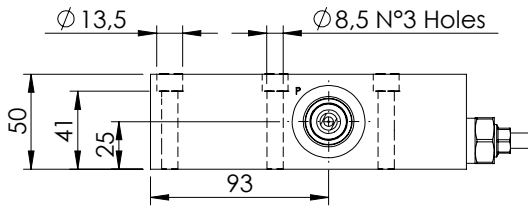
ORDERING CODES

Quick code	Description	Main ports size	Standard setting (bar, Q=5 l/min)	Adjust. range (bar)	Pressure increase (bar/turn)
MF000351	MFPC-140-TMLR-80-G12-N320	P,A,T: G1/2" M: G1/4"	200	60-210	24

FLOW REGULATOR

MFPC-200-MMAR

PROPORTIONAL VALVES WITH UNLOADING WITH RELIEF



SPECIFICATIONS

Max. operating pressure:	320 bar
Rated flow:	200 l/min
Max regulated flow:	0 - 80 l/min
Manifold:	Zinc plated steel
Weight:	6,72 kg
Coil type:	M7 - M15
Cavity type:	SAE-16-3N

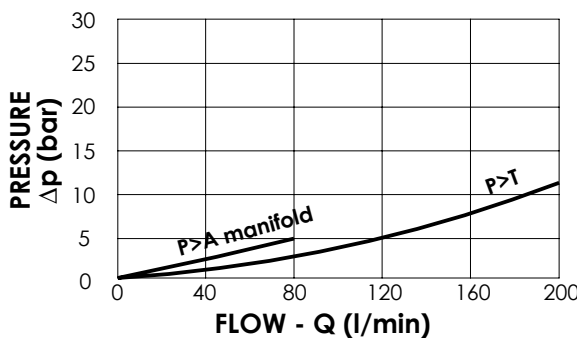
SEALING CAP

Ordering code:
AT000020



NOTES

- See chapter 18.00.000 for coils.
- See chapter 16.00.000 for proportional valve info.



ORDERING CODES

Quick code	Description	Main ports size	Standard setting (bar, Q=5 l/min)	Adjust. range (bar)	Pressure increase (bar/turn)
MF000352	MFPC-200-MMAR-80-G12-N320	P,T,R: G 3/4"	220	140-350	142