



ATLANTIC
Fluid Tech



OIL SOLUTIONS

**PO Box 38
Strathfieldsaye, VIC, 3551
1800 OIL SOL
1800 645 765**

sales@oilsolutions.com.au

www.oilsolutions.com.au

"For All Your Hydraulic Needs"

**SECTION
20**

Applications

SECTION 20

APPLICATIONS



Chapter	Valve type	Page
20. 1	Excavators - Mini excavators	20.01.000
20. 2	All terrain cranes	20.02.000
20. 3	Concrete pump cranes	20.03.000
20. 4	Salt sprayers	20.04.000
20. 5	Garbage compactors	20.05.000
20. 6	Hook loaders	20.06.000



1800-OILSOL
1800-645765

<https://oilsolutions.com.au/>

sales@oilsolutions.com.au

SECTION 20. 1

APPLICATIONS - EXCAVATORS

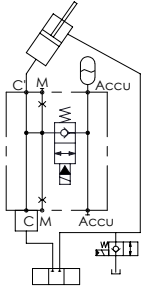
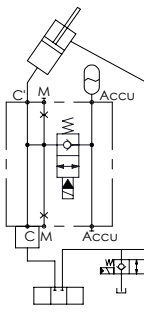


Hydraulic scheme	Valve description	Valve type	Rated flow (l/min)	Max. pressure (bar)	Installation	Main port size or cavity type	Page
	MLST-160-RLGR	Right version with oil recovery	160	420	In line	G 3/4"	20.01.010
	MLST-250-RAUR	Right version	250	420	Flanged	3/4" SAE 6000	20.01.020
	MLST-250-RAUL	Left version	250	420	Flanged	3/4" SAE 6000	20.01.030
	BDEF-010-ALRV	Quick hitch	10	380	In line	1/4" Jis	20.01.040
	BNND-010-AERV	Quick hitch	10	350	In line	G 1/4"	20.01.050
	BNND-100-ALBE	Excavator attachment function	100	350	Flanged	G 1/2"	20.01.060
	BNND-200-ALBE	Excavator attachment function	200	350	Flanged	3/4" SAE 6000	20.01.070
	BNND-300-ALBE	Excavator attachment function	300	350	Flanged	1" SAE 6000	20.01.080
	MDRC-200-SLVN	Selector valve	200	500	Flanged	3/4" SAE 6000	20.01.090
	BPF-060-ALSU	Flow regulated with relief valve	60	350	In line	G 1/2"	20.01.100

SECTION 20. 1

APPLICATIONS - EXCAVATORS

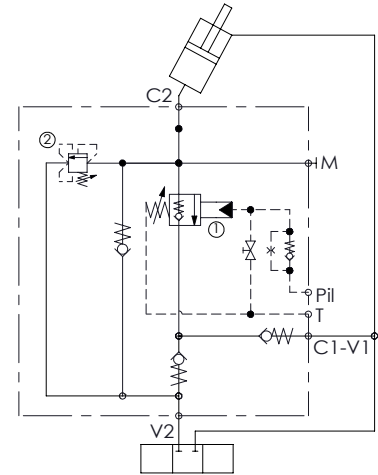
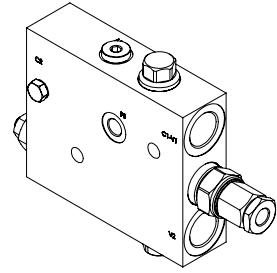
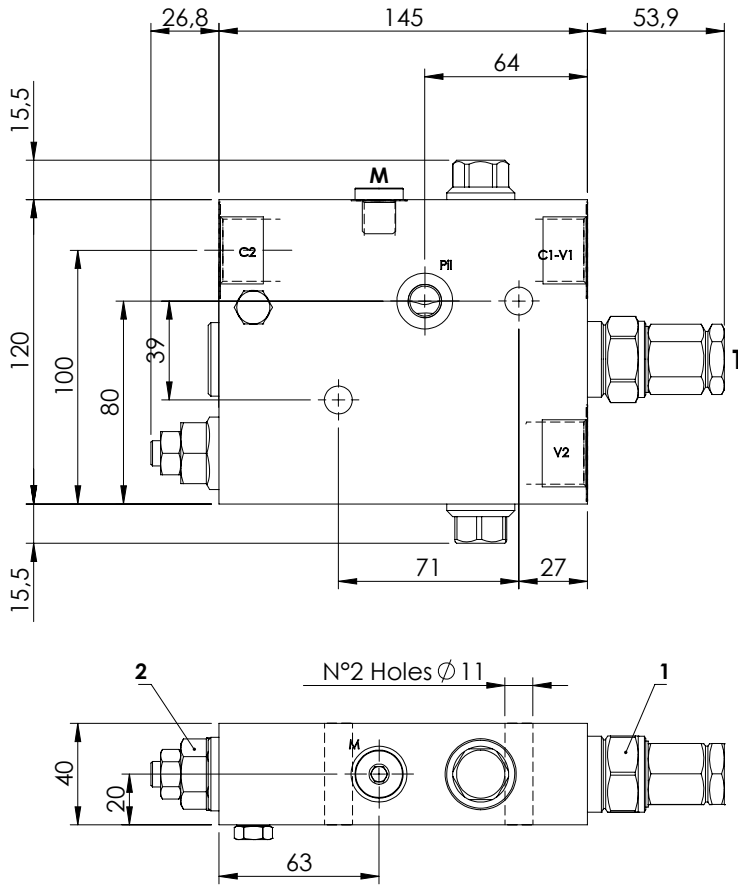


Hydraulic scheme	Valve description	Valve type	Rated flow (l/min)	Max. pressure (bar)	Installation	Main port size or cavity type	Page
	BNND-070-AERC	Solenoid activated	70	420	Flanged	3/4" SAE 3000/6000	20.01.110
	BNND-070-AERC	Solenoid activated	70	420	Flanged	1" SAE 3000/6000	20.01.120

EXCAVATORS VALVE

MLST-160-RLGR

WITH OIL RECOVERY

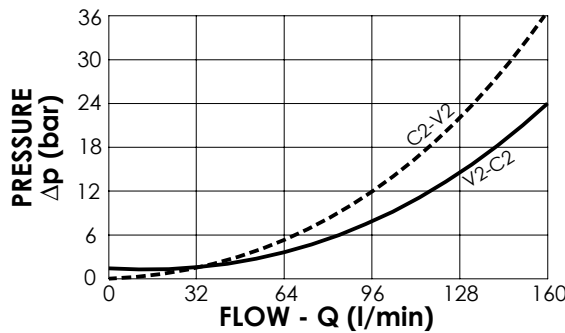


SPECIFICATIONS

Max. operating pressure:	420 bar
Rated flow:	160 l/min
Manifold:	Steel
Weight:	5,01 kg

NOTES

When correctly adjusted for the specific excavator installation, these valves meet the requirement of ISO 8643



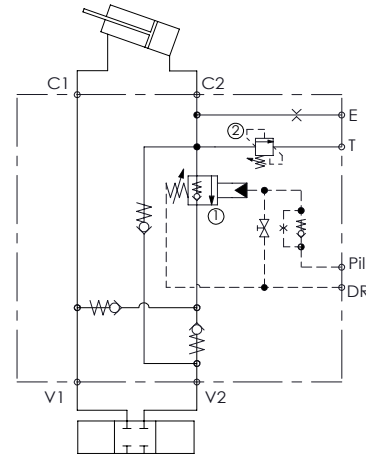
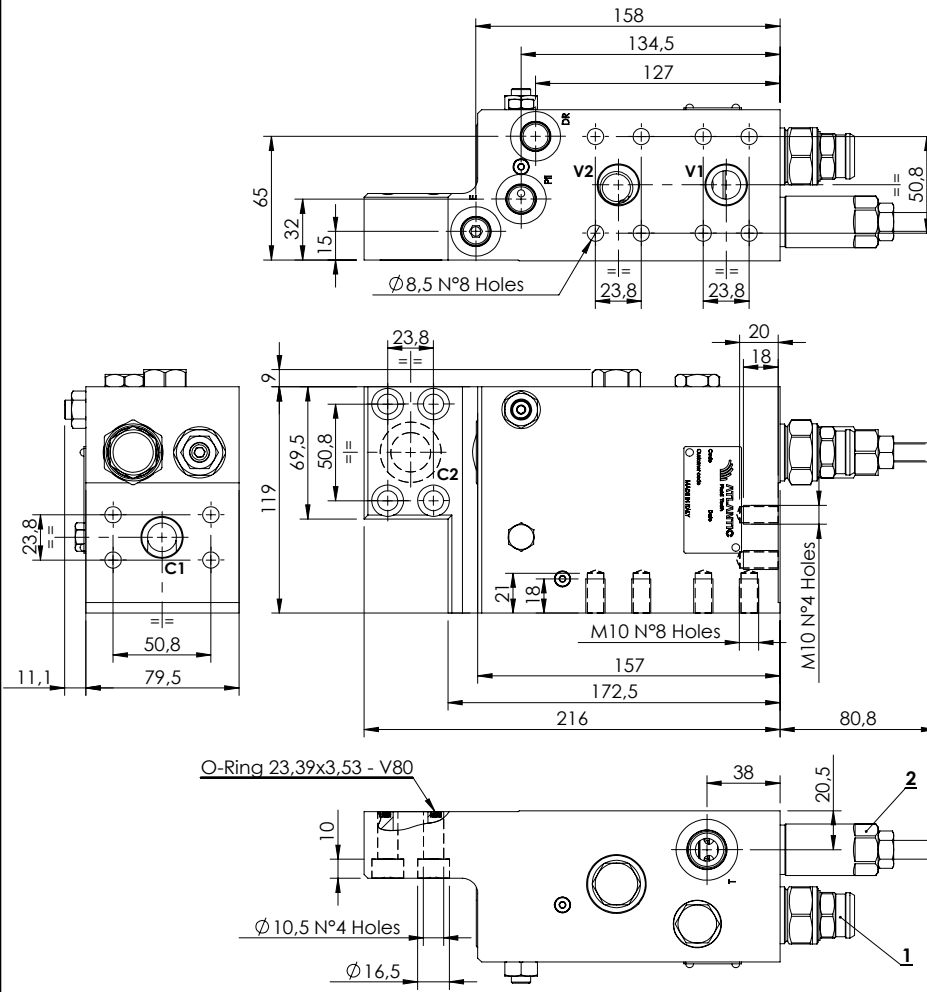
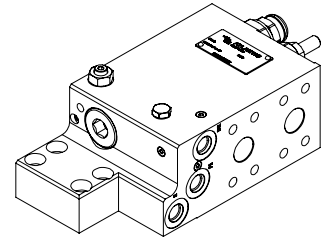
ORDERING CODES

Quick code	Description	Main ports size	Standard setting (bar)	Adjust. range (bar)	Pressure increase (bar/turn)
ML000165	MLST-160-RLGR-00-G34-N420	V2,C2: G 3/4" P11,T,M: G 1/4"	① 350 Q=5 l/min ② 7.5 Crack. pr.	① 350-400 ② 3-15	① 72 ② 8

EXCAVATORS VALVE

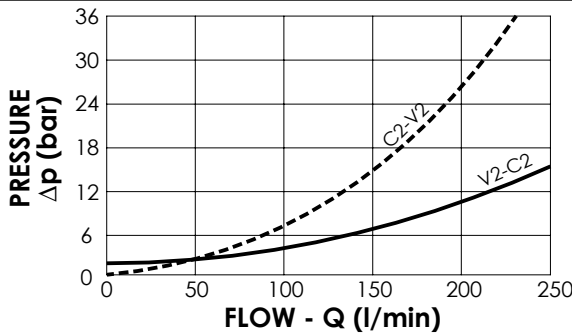
MLST-250-RAUR

**FLANGED TYPE
3/4" SAE 6000
WITH OIL RECOVERY**



SPECIFICATIONS

Max. operating pressure:	420 bar
Rated flow:	250 l/min
Manifold:	Steel
Weight:	11,7 kg



NOTES

When correctly adjusted for the special excavator installation, these valves meet the requirement of ISO 8643

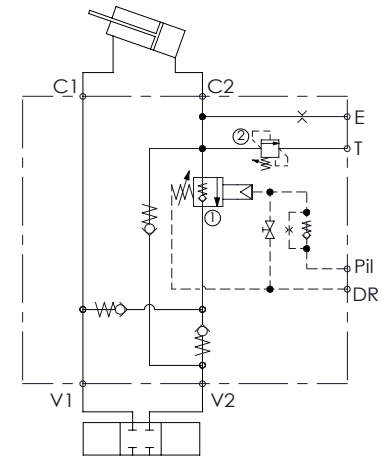
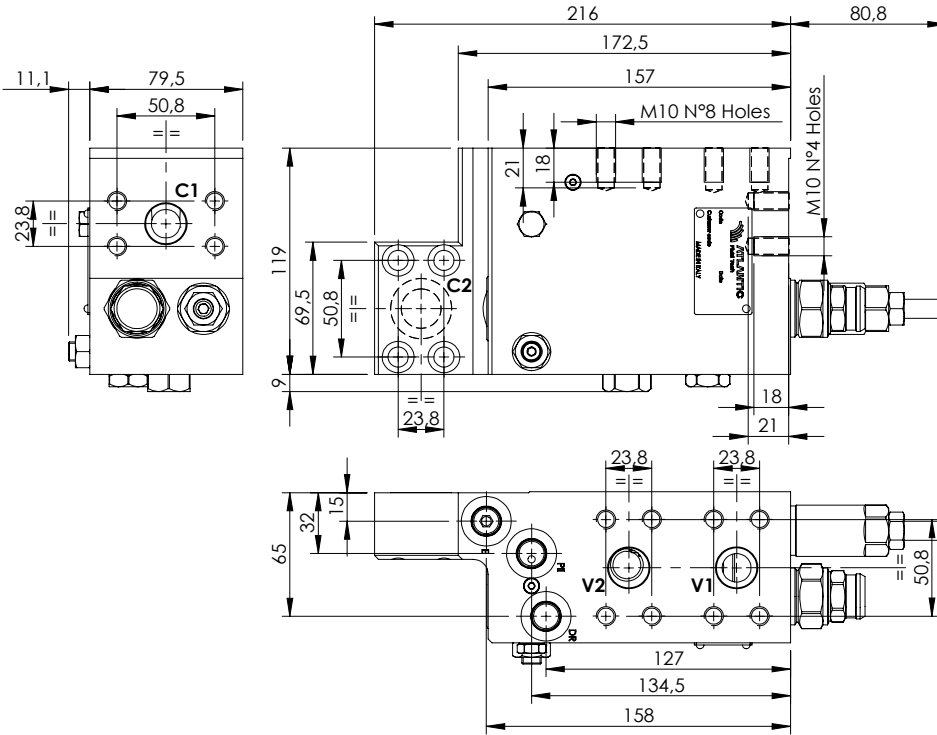
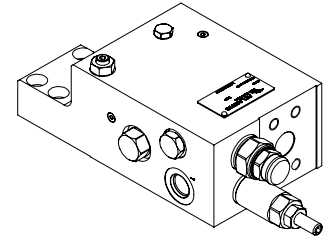
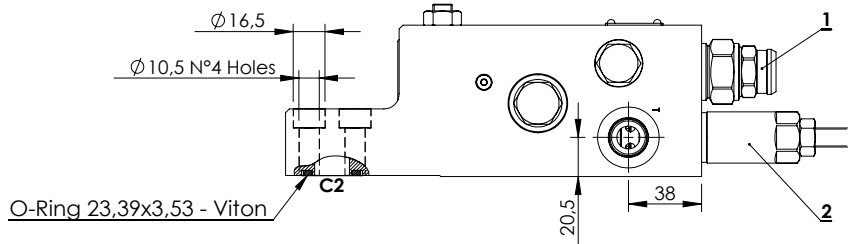
ORDERING CODES

Quick code	Description	Main ports size	Standard setting (bar)	Adjust. range (bar)	Pressure increase (bar/turn)
ML000265	MLST-250-RAUR-00-S34-N420	V1,V2,C1,C2: 3/4" SAE 6000 E,Pil,Dr: 9/16-18 UNF T: 3/4-16 UNF	① 7.9 Crack. pr. ② 395 Q=5 l/min	① 3-15 ② 150-420	① 6 ② 53

EXCAVATORS VALVE

MLST-250-RAUL

**FLANGED TYPE
3/4" SAE 6000
WITH OIL RECOVERY**

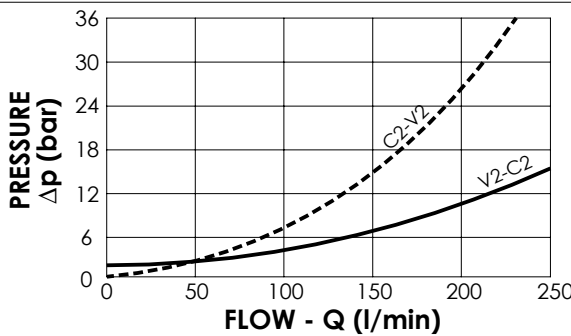


SPECIFICATIONS

Max. operating pressure:	420 bar
Rated flow:	250 l/min
Manifold:	Steel
Weight:	11,72 kg

NOTES

When correctly adjusted for the special excavator installation, these valves meet the requirement of ISO 8643



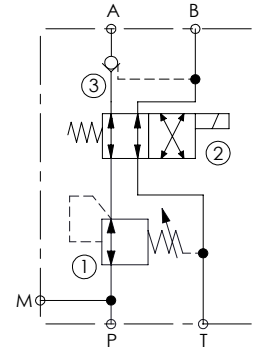
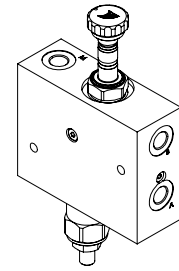
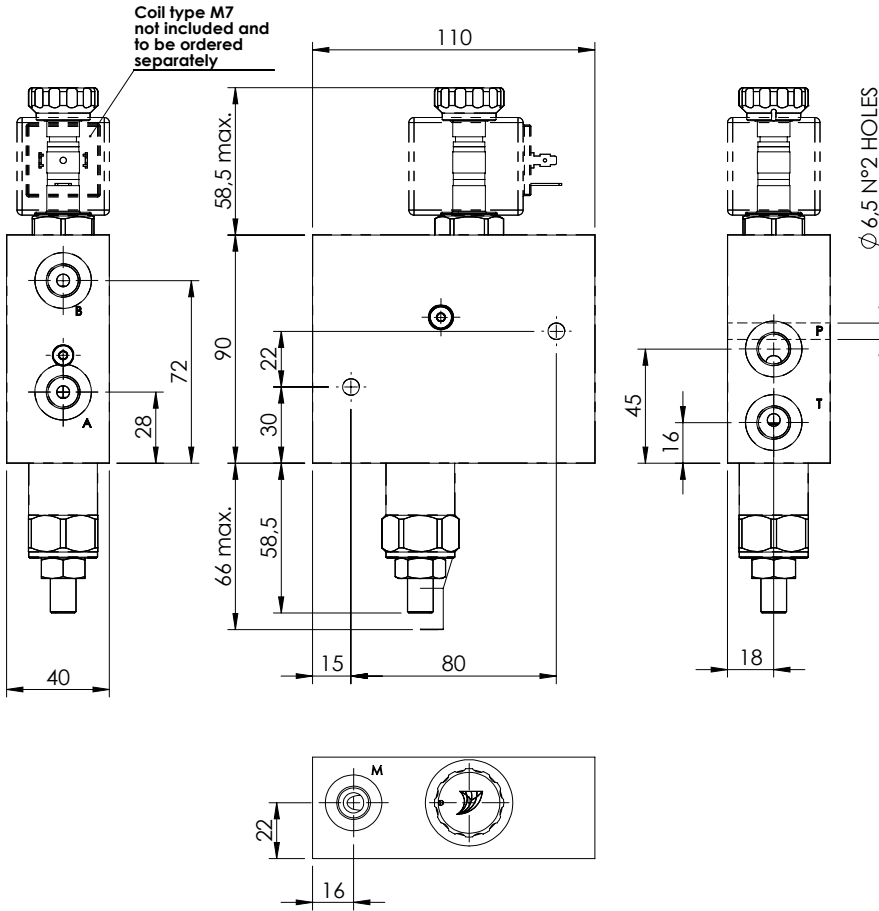
ORDERING CODES

Quick code	Description	Main ports size	Standard setting (bar)	Adjust. range (bar)	Pressure increase (bar/turn)
ML000266	MLST-250-RAUL-00-S34-N420	V1,V2,C1,C2: 3/4" SAE 6000 E,Pil,Dr: 9/16-18 UNF T: 3/4-16 UNF	① 7.9 Crack. pr. ② 395 Q=5 l/min	① 3-15 ② 150-420	① 6 ② 53

EXCAVATORS VALVE

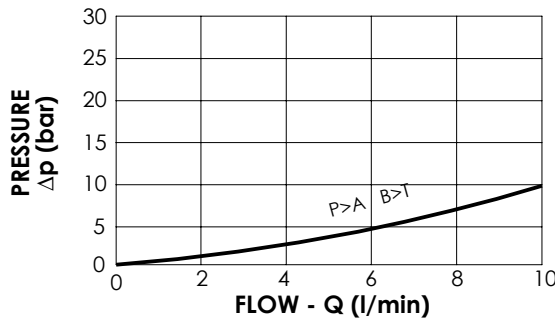
BDEF-010-ALRV

AUXILIARY QUICK HITCH



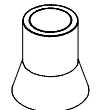
SPECIFICATIONS

Max. operating pressure:	380 bar
Rated flow:	10 l/min
Manifold:	Steel
Weight:	3,2 kg
Coil Type:	M7



SEALING CAP

Ordering code:
AT000022



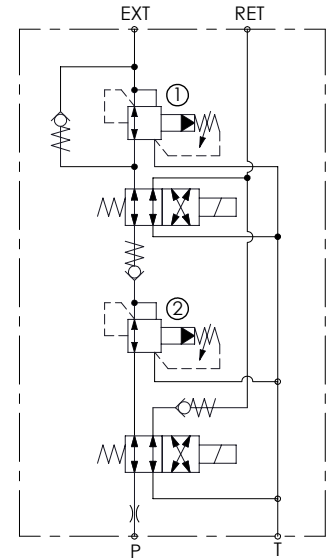
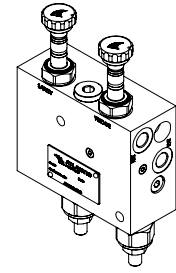
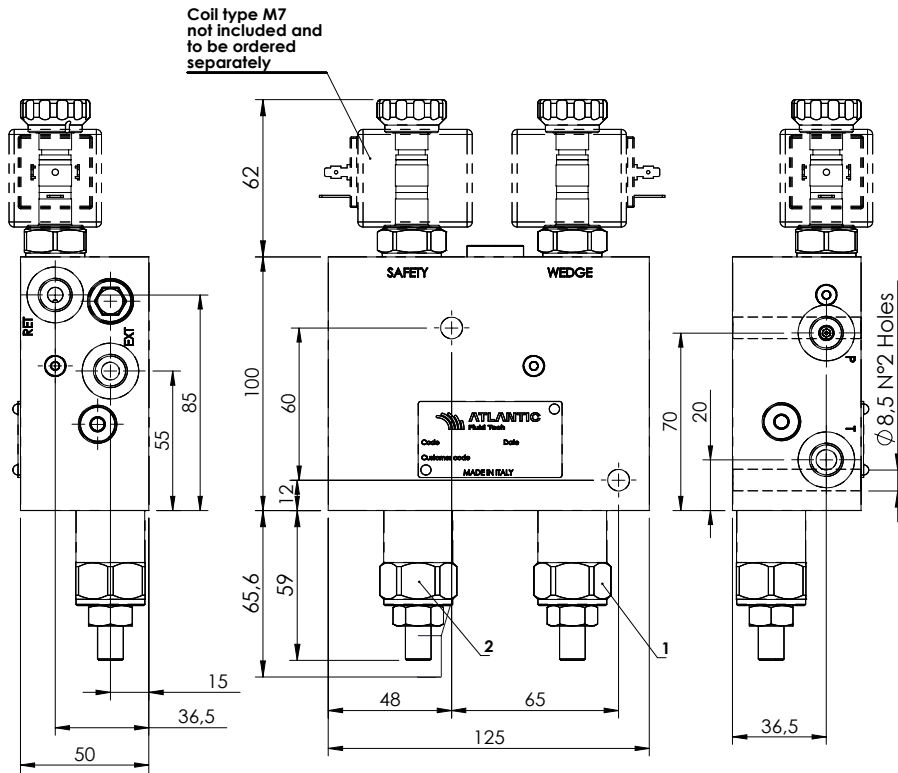
ORDERING CODES

Quick code	Description	Main ports size	Standard setting (bar, Q=5 l/min)	Adjustm. range (bar)	Pressure increase (bar/turn)
BD000095	BDEF-010-ALRV-NP-G14-V380	P, T, A, B, M: G 1/4"	340	70 - 350	114

EXCAVATORS VALVE

BNND-010-AERV

AUXILIARY QUICK HITCH

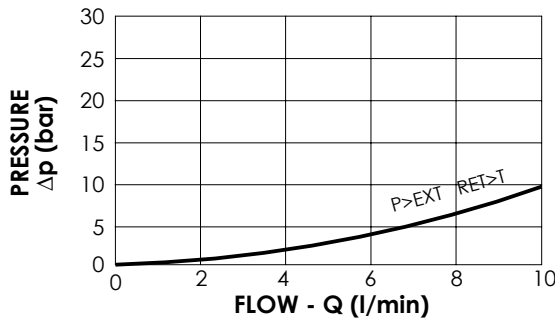
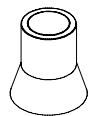


SPECIFICATIONS

Max. operating pressure:	350 bar
Rated flow:	10 l/min
Manifold:	Steel
Weight:	4,9 kg
Coil Type:	M7

SEALING CAP

Ordering code:
AT000022



ORDERING CODES

Quick code	Description	Main ports size	Standard setting (bar, Q=5 l/min)	Adjustm. range (bar)	Pressure increase (bar/turn)
BD000207	BNND-010-AERV-NP-G14-N350	P,T,A,B M: G 1/4"	① :120 ② :240	70 - 350	114

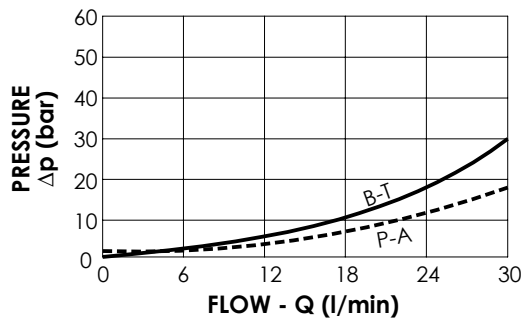
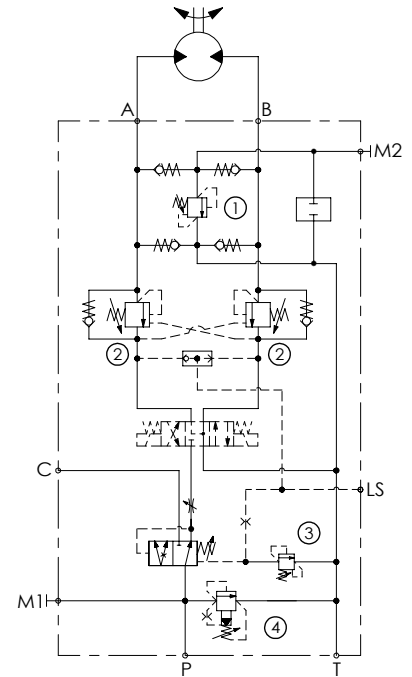
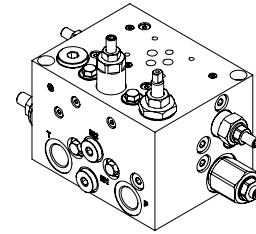
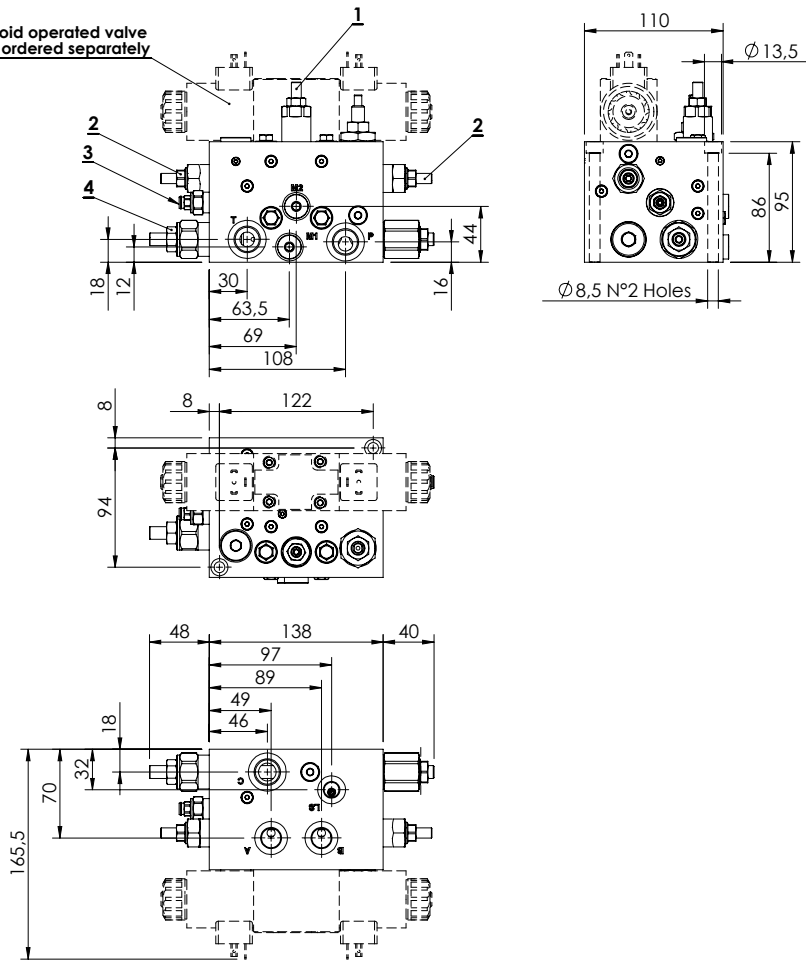
EXCAVATORS VALVE

BNND-100-ALBE

EXCAVATOR ATTACHMENT
FUNCTION - G 1/2"



Solenoid operated valve
to be ordered separately



SPECIFICATIONS

Max. operating pressure: **350 bar**
 Rated flow: **Q max inlet : 100 l/min**
Q in A - B : 30 l/min
 Manifold: **Steel zincplated**
 Weight: **10,96 kg**

NOTES

Our spring on the compensator is adjustable from 5 to 15 bar, the max flow in A and B depend on the Δp curve of the electrical valve.

ORDERING CODES

Quick code	Description	Pilot ratio	Main ports size	Standard setting (bar, Q=5 l/min)	Adjust. range (bar)	Pressure increase (bar/turn)
BD000081	Excavator attachment function - G 1/2	4 : 1	P-T-C: G1/2" A-B: G3/8" M1-M2-LS: G1/4"	① 220 ③ 200 ② 260 ④ 250	①② 100-350 ③ 120-350 ④ 140-350	① 91 ③ 165 ② 184 ④ 114

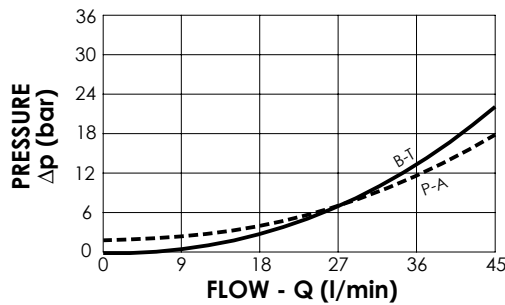
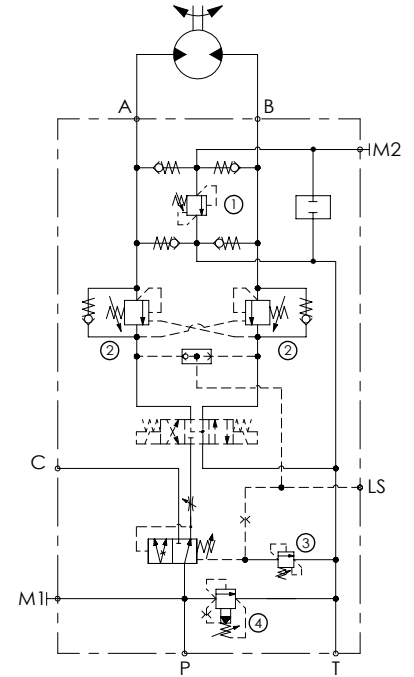
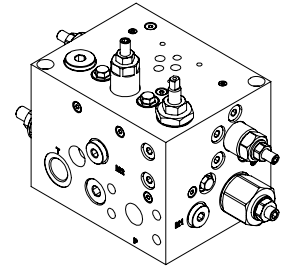
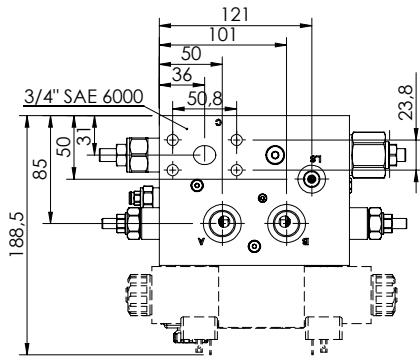
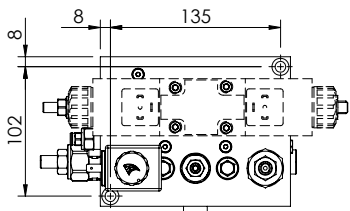
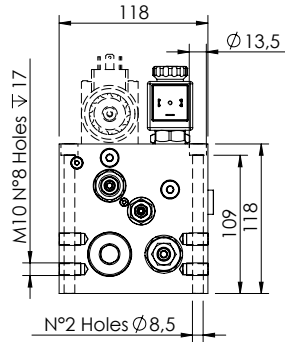
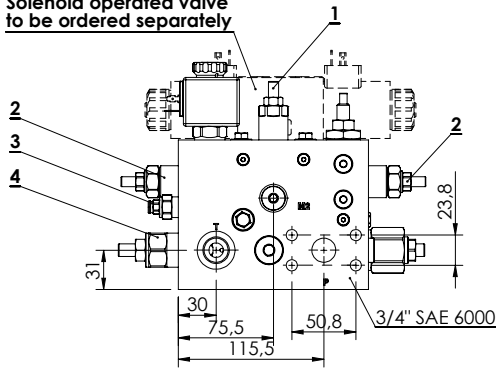
EXCAVATORS VALVE

BNND-200-ALBE

**EXCAVATOR ATTACHMENT
FUNCTION - G 3/4" SAE 6000**



Solenoid operated valve
to be ordered separately



SPECIFICATIONS

Max. operating pressure:	350 bar
Rated flow:	Q max inlet : 200 l/min Q in A - B : 45 l/min
Manifold:	Steel zincplated
Weight:	16,01 kg

NOTES

Our spring on the compensator is adjustable from 5 to 15 bar, the max flow in A and B depend on the Δp curve of the electrical valve.

ORDERING CODES

Quick code	Description	Pilot ratio	Main ports size	Standard setting (bar, Q=5 l/min)	Adjust. range (bar)	Pressure increase (bar/turn)
BD000082	Excavator attachment function - 3/4" SAE 6000	4 : 1	P-C: G3/4" SAE 6000 A-B-T: G3/4" M1-M2-LS: G1/4"	① 220 ③ 200 ② 260 ④ 250	①② 100-350 ③ 120-350 ④ 140-350	① 91 ③ 165 ② 138 ④ 114

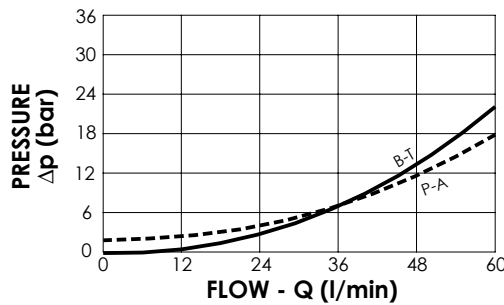
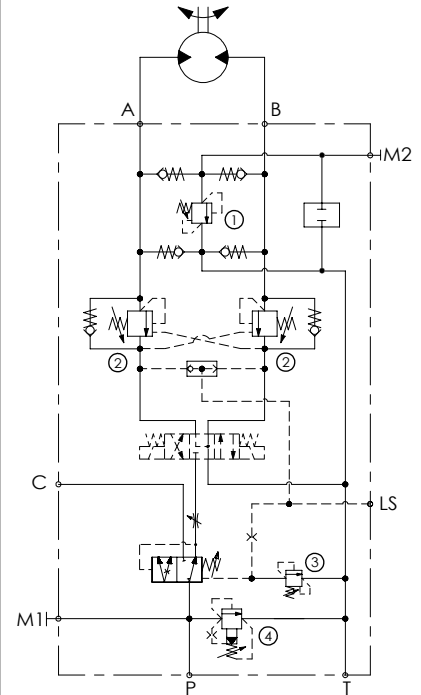
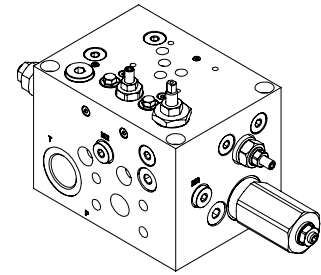
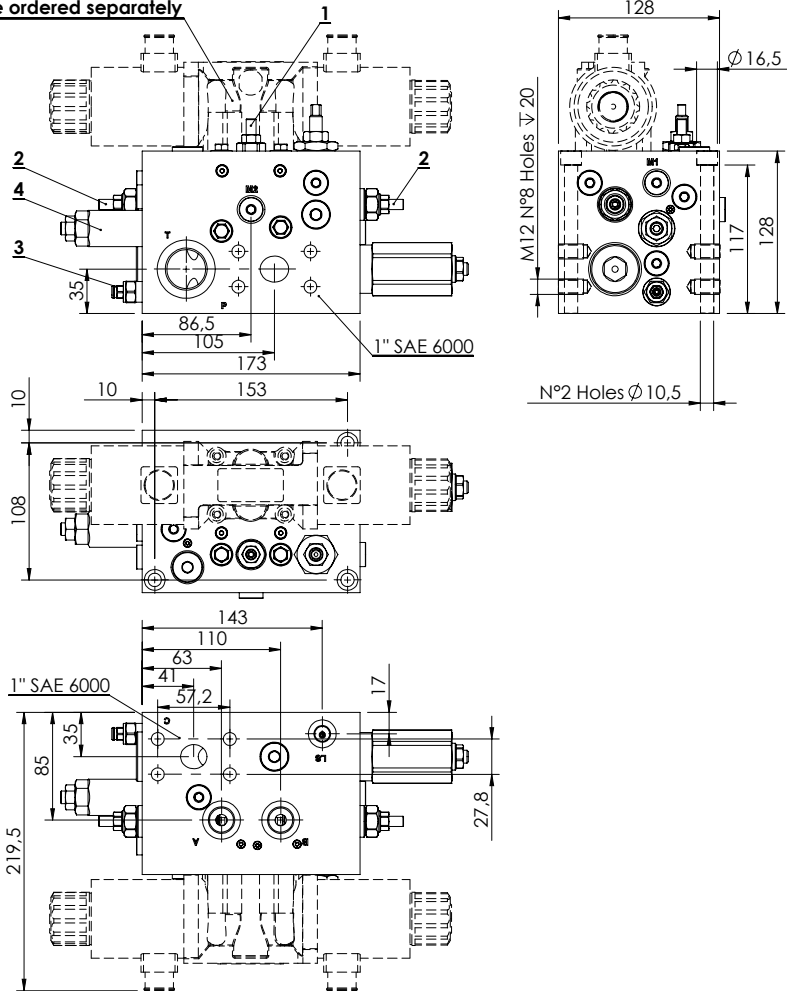
EXCAVATORS VALVE

BNND-300-ALBE

**EXCAVATOR ATTACHMENT
FUNCTION - G 1" SAE 6000**



Solenoid operated valve
to be ordered separately



SPECIFICATIONS

- Max. operating pressure: **350 bar**
- Rated flow: **Q max inlet : 300 l/min**
Q in A - B : 60 l/min
- Manifold: **Steel zincplated**
- Weight: **26,76 kg**

NOTES

Our spring on the compensator is adjustable from 5 to 15 bar, the max flow in A and B depend on the Δp curve of the electrical valve.

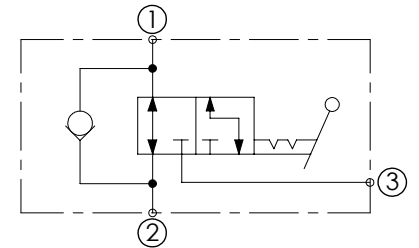
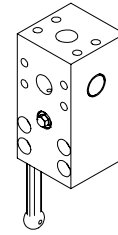
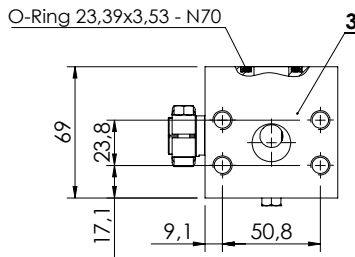
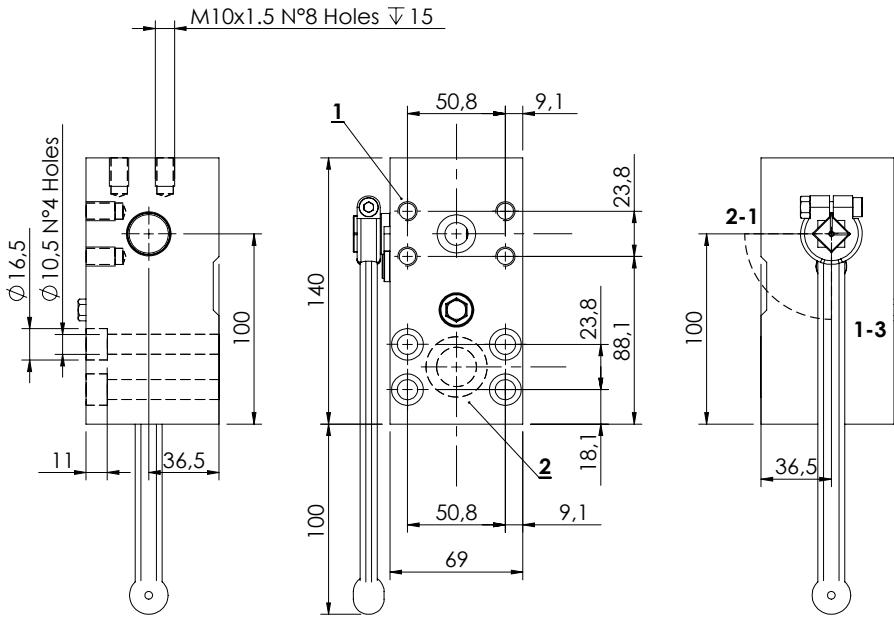
ORDERING CODES

Quick code	Description	Pilot ratio	Main ports size	Standard setting (bar, Q=5 l/min)	Adjust. range (bar)	Pressure increase (bar/turn)
BD000083	Excavator attachment function - 1" SAE 6000	4 : 1	P-C: G1" SAE 6000 A-B-T: G1/2" M1-M2-LS: G1/4"	① 220 ③ 200 ② 260 ④ 250	①② 100-350 ③ 120-350 ④ 140-270	① 91 ③ 165 ② 138 ④ 49

EXCAVATORS VALVE

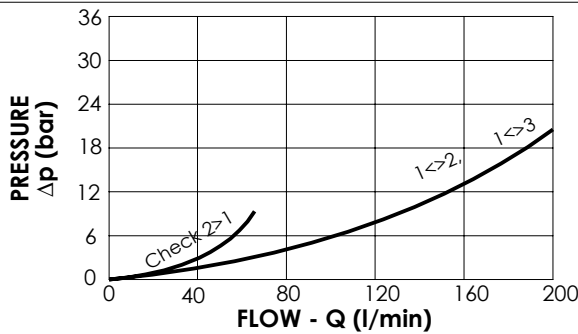
MDRC-200-SLVN

AUXILIARY
SELECTOR VALVE



SPECIFICATIONS

Max. operating pressure:	500 bar
Rated flow:	200 l/min
Manifold:	Steel
Weight:	4,86 kg



NOTES

1 to 2, leakage in 3: 20 cc @ 100 bar
1 to 3, leakage in 2: 20 cc @ 100 bar

Oil specification: 46 cSt
Oil temperature: 35°C

Handle supplied separately,
not attached to the block.

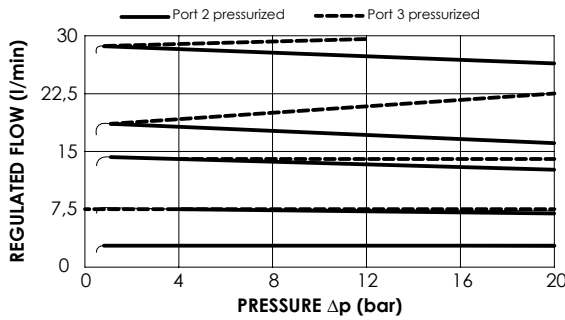
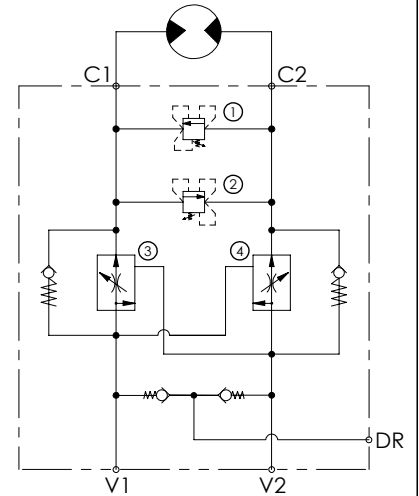
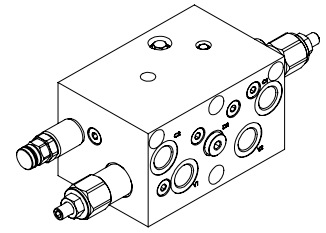
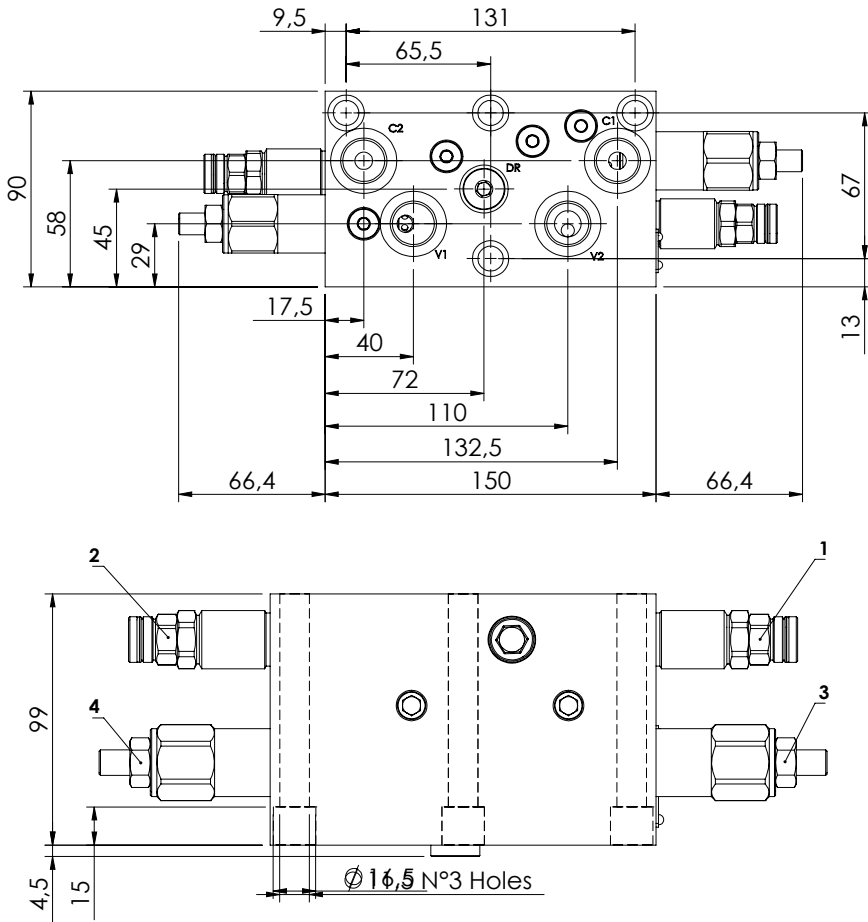
ORDERING CODES

Quick code	Description	Main ports size	
MD000072	MDRC-200-SLVN-NP-S34-N500	3/4" SAE 6000	

EXCAVATORS VALVE

BPFD-060-ALSU

FLOW REGULATOR WITH RELIEF VALVE



SPECIFICATIONS

Max. operating pressure:	350 bar
Rated flow:	60 l/min
Regulated Flow:	30 l/min
Manifold:	Steel
Weight:	9,79 kg
Coil:	

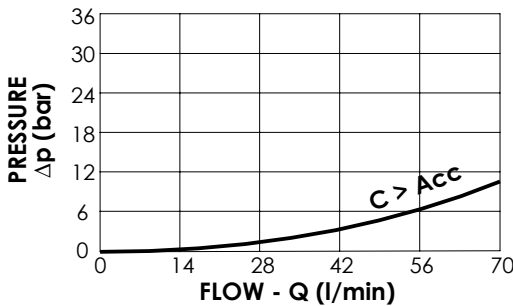
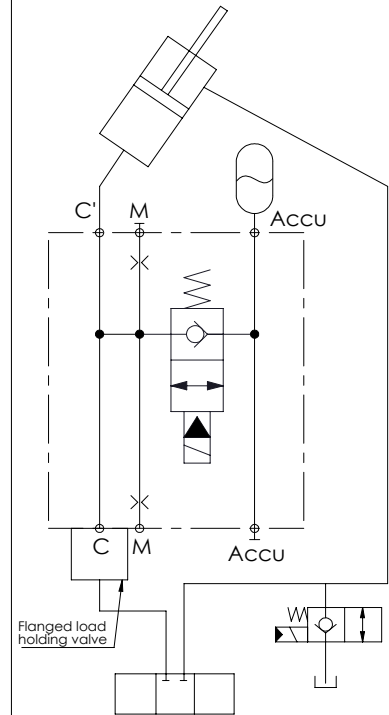
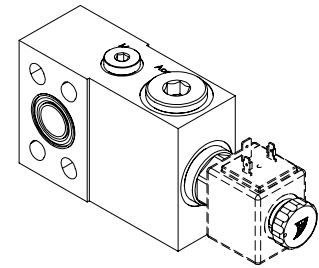
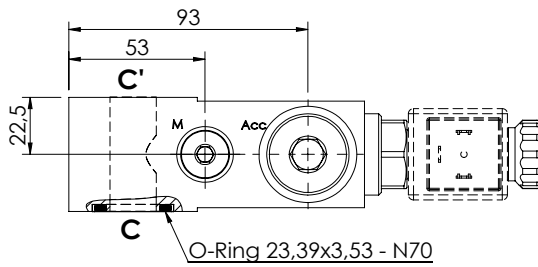
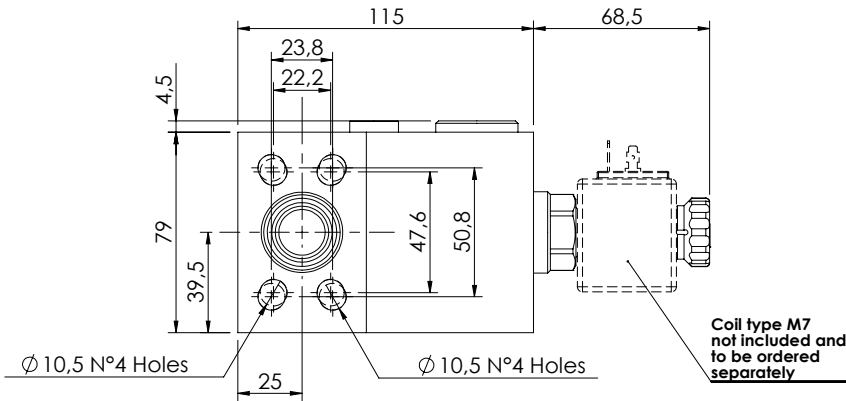
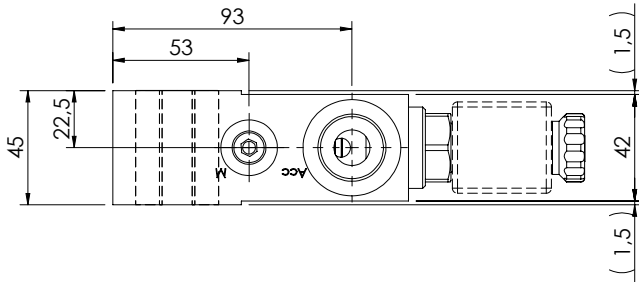
ORDERING CODES

Quick code	Description	Main ports size	Setting range (bar)	Adjustment range (bar)	Pressure increase (bar/turn)
BP000039	BPFD-060-ALSU-FT-G12-N350	V1,V2,C1,C2: G 1/2" DR: G 1/4"	90	30-100	20

EXCAVATORS VALVE

BNND-070-AERC

**SOLENOID ACTIVATED
FLANGED**



SPECIFICATIONS

Max. operating pressure:	420 bar
Rated flow:	70 l/min
Manifold:	Steel
Weight:	2,96 kg
Coil type:	M7

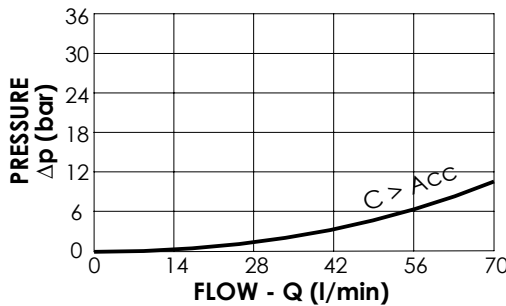
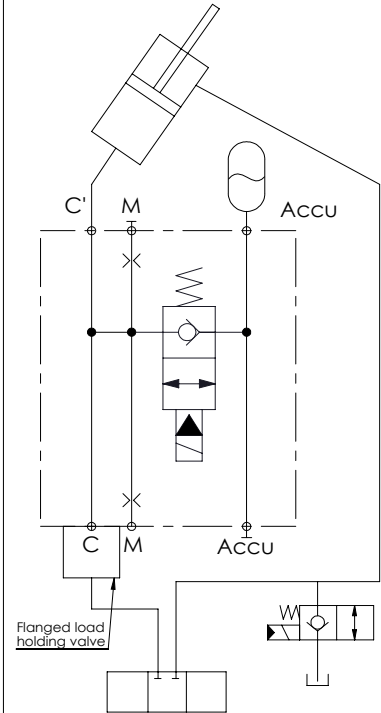
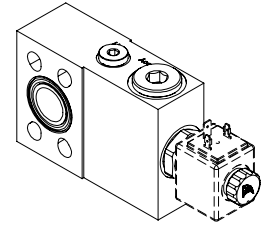
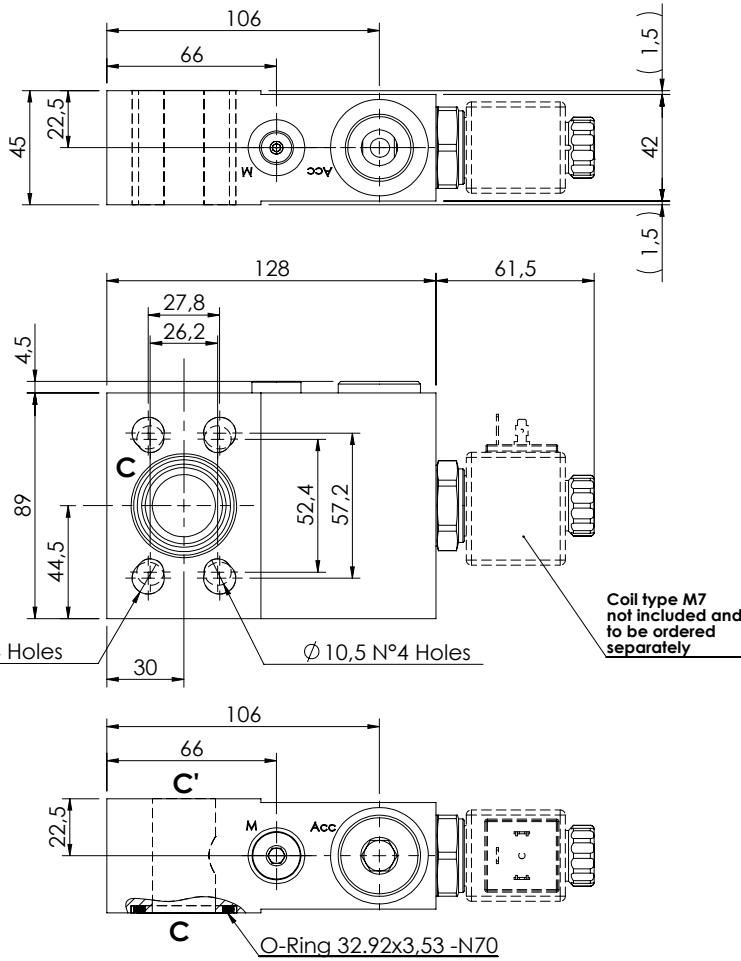
ORDERING CODES

Quick code	Description	Main ports size
BD000065	BNND-070-AERC-00-S34-N350	C,C': 3/4" SAE 3000/6000 Acc: G 3/4" M: G 1/4"

EXCAVATORS VALVE

BNND-070-AERC

SOLENOID ACTIVATED
FLANGED



SPECIFICATIONS

Max. operating pressure:	420 bar
Rated flow:	70 l/min
Manifold:	Steel
Weight:	3,54 kg
Coil type:	M7

ORDERING CODES

Quick code	Description	Main ports size
BD000066	BNND-070-AERC-00-S10-N350	C, C': 1" SAE 3000/6000 Acc: G 3/4" M: G 1/4"

SECTION 20. 2

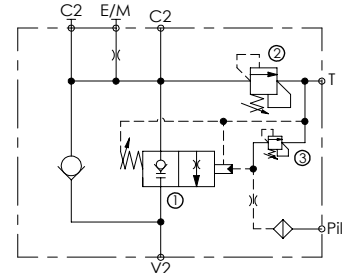
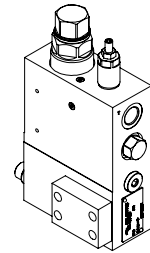
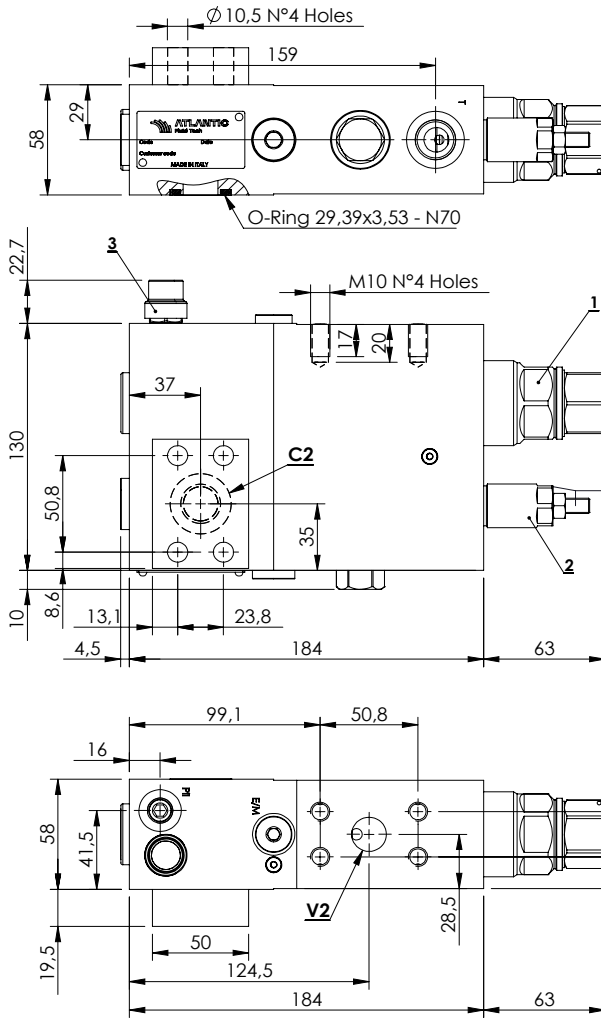
APPLICATIONS - ALL TERRAIN CRANES



Hydraulic scheme	Valve description	Valve type	Rated flow (l/min)	Max. pressure (bar)	Installation	Main port size or cavity type	Page
	MLST-250-AAGN	-	250	350	In line	3/4" SAE 6000	20.02.010

ALL TERRAIN CRANES

MLST-250-AAGN

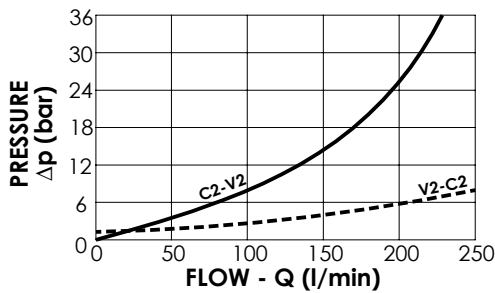
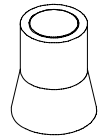


SPECIFICATIONS

Max. operating pressure:	350 bar
Rated flow:	250 l/min
Manifold:	Steel
Weight:	10,56 kg

SEALING CAP

Ordering code:
AT000020



NOTES

When correctly adjusted for the special excavator installation, these valves meet the requirement of ISO 8643

Piston with grooves

ORDERING CODES

Quick code	Description	Main ports size	Standard setting (bar)	Adjust. range (bar)	Pressure increase (bar/turn)
ML000212	MLST-250-AAGN-00-S34-N350	V2,C2: 3/4" SAE 6000 E/M,Pil: G 1/4" T: G 1/2"	① 9 Q=5 l/min ③ 20 C.P. ② 350 Q=5 l/min	① 2-15 ③ 10-40 ② 100-350	① 1,6 ③ 22 ② 91

SECTION 20. 3

APPLICATIONS - CONCRETE PUMP CRANES

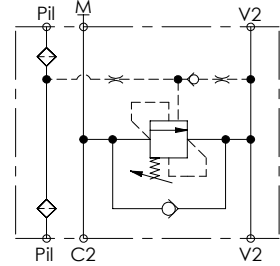
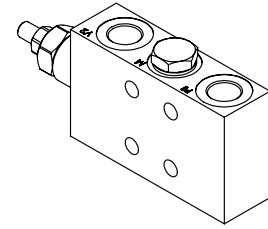
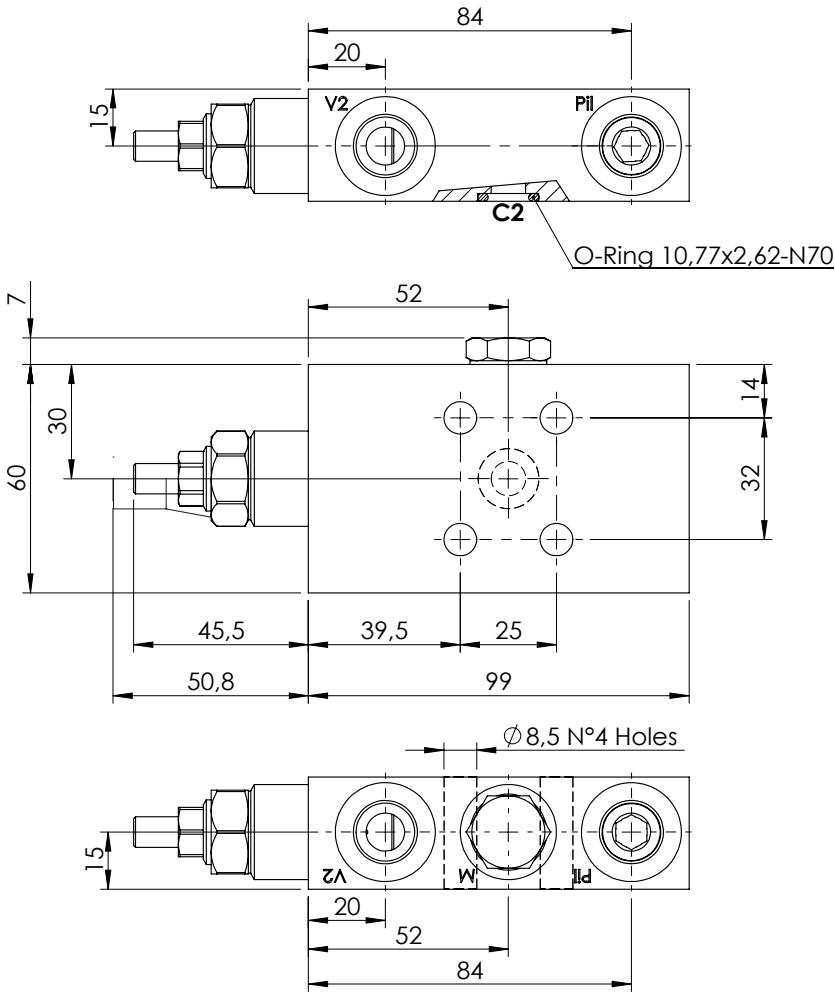


Hydraulic scheme	Valve description	Valve type	Rated flow (l/min)	Max. pressure (bar)	Installation	Main port size or cavity type	Page
	MBSN-060-ZAPF	-	60	350	Flanged	G 3/8"	20.03.010
	MBSN-060-AAST	-	60	350	Flanged	Ø9	20.03.020
	MBSN-060-AASA	-	60	350	Flanged	Ø9	20.03.030
	MBSN-060-APST	-	60	350	Flanged	M22x1,5	20.03.040
	MBSN-080-APST	-	80	350	Flanged	M22x1,5	20.03.050
	MBSN-060-ZENV	-	60	350	Flanged	Ø9	20.03.060

CONCRETE PUMP CRANES

MBSN-060-ZAPF

SINGLE ACTING
FLANGED

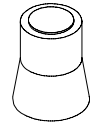


SPECIFICATIONS

Max. operating pressure:	350 bar
Rated flow:	60 l/min
Manifold:	Aluminium
Weight:	0,56 kg

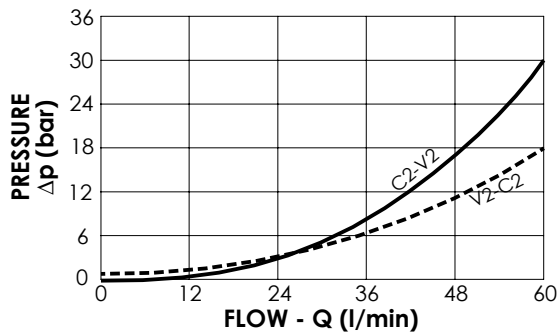
SEALING CAP

Ordering code:
AT000020



NOTES

Setting: at least 1.3 times the load induced pressure
Pilot ratio: 4,2:1
Operative pilot ratio: 2,1:1

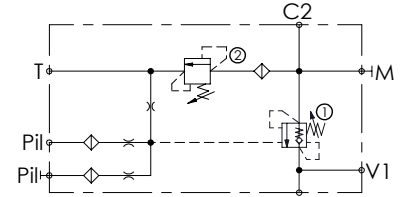
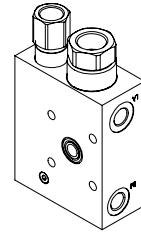
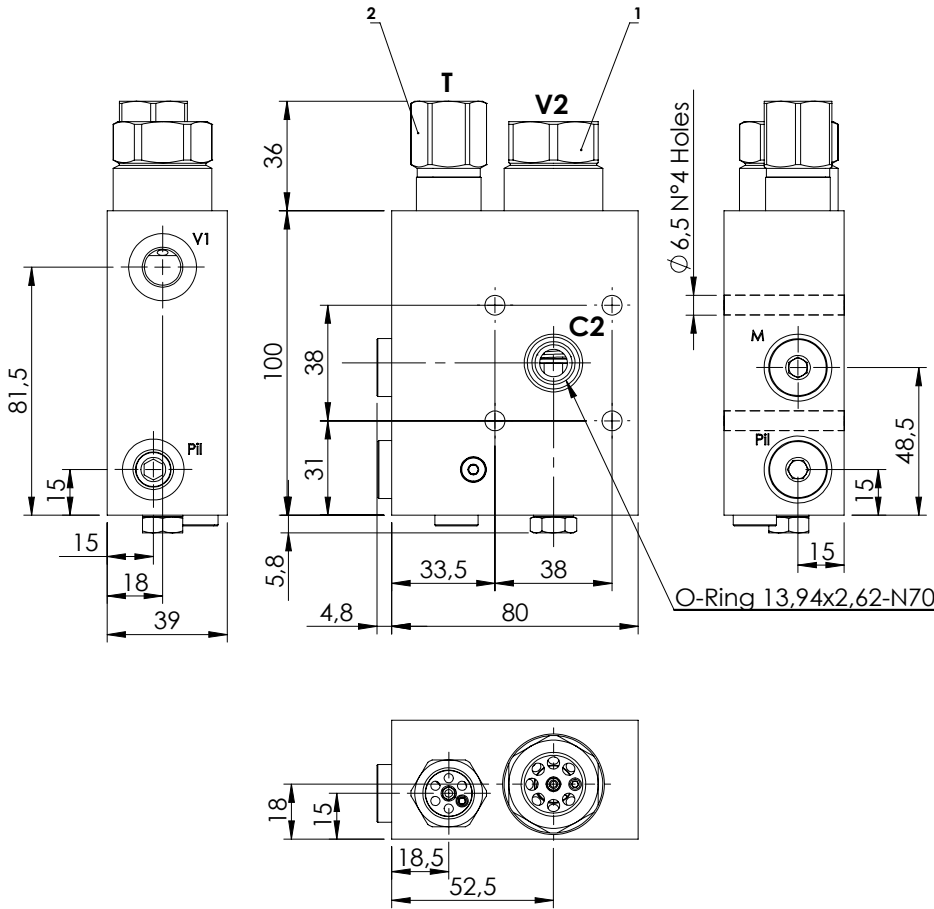


ORDERING CODES

Quick code	Description	Main ports size	Standard setting (bar, Q=5 l/min)	Adjust. range (bar)	Pressure increase (bar/turn)
MB000461	MBSN-060-ZAPF-02-G38-N350	V2,Pil:G 3/8" M:M12x1,5	340	100-350	138

CONCRETE PUMP CRANES

MBSN-060-AAST



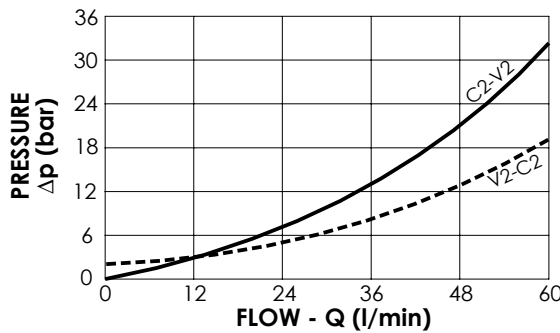
SPECIFICATIONS

Max. operating pressure:	500 bar
Rated flow:	60 l/min
Manifold:	Steel
Weight:	2,42 kg

NOTES

Setting: at least 1.3 times the load induced pressure

Pilot ratio: 7:1
Operated pilot ratio: 3,6:1

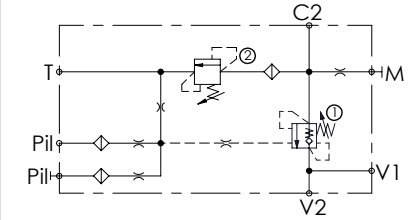
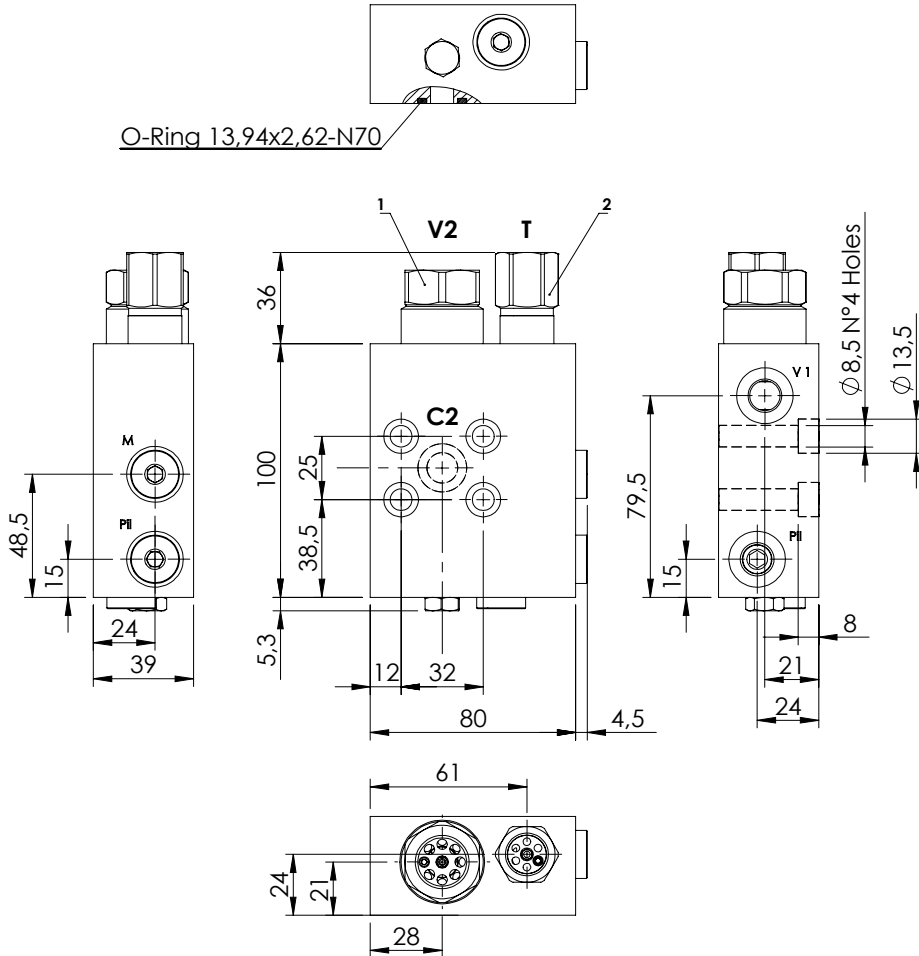
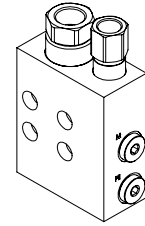


ORDERING CODES

Quick code	Description	Main ports size	Standard setting (bar, Q=5 l/min)	Adjust. range (bar)	Pressure increase (bar/turn)
MB000101	MBSN-060-AAST-04-G12-N500	V1,Pil,M:G1/4" T:G3/8" V2:G1/2" C2:Ø9	①:450 ②:450	①:200-450 ②:150-500	①:366 ②:167

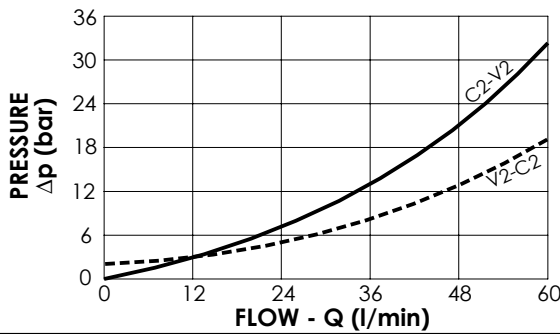
CONCRETE PUMP CRANES

MBSN-060-AASA



SPECIFICATIONS

Max. operating pressure:	500 bar
Rated flow:	60 l/min
Manifold:	Steel
Weight:	2,38 kg



NOTES

Setting: at least 1.3 times the load induced pressure

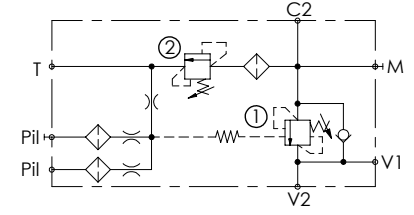
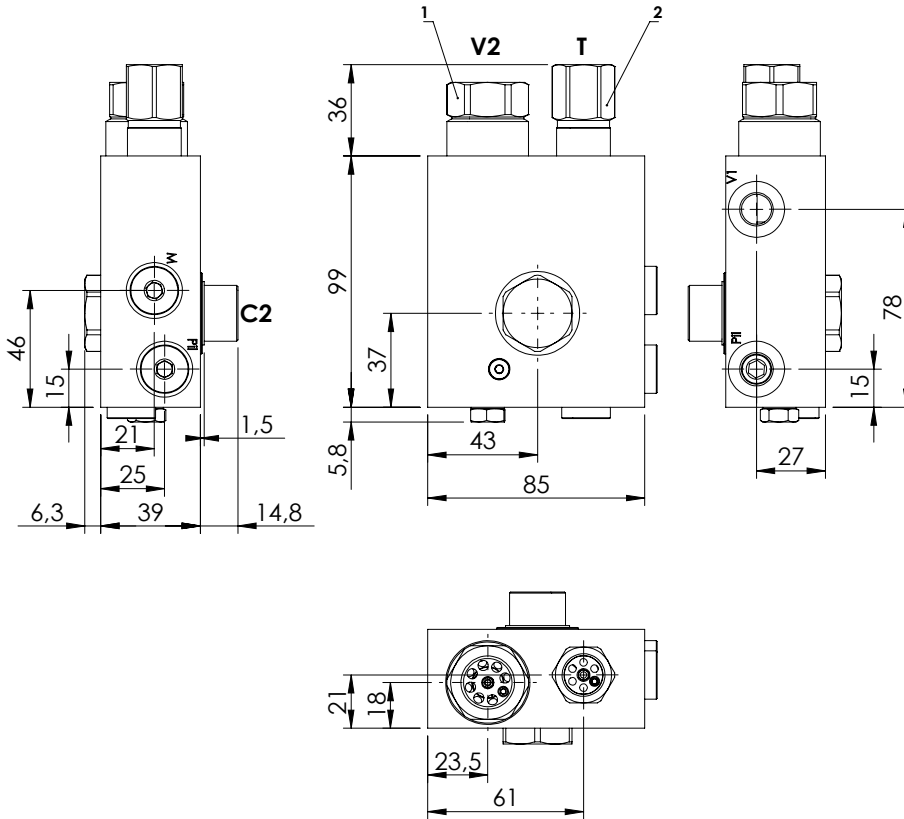
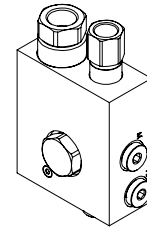
Pilot ratio: 7:1
Operated pilot ratio: 2,5:1

ORDERING CODES

Quick code	Description	Main ports size	Standard setting (bar, Q=5 l/min)	Adjust. range (bar)	Pressure increase (bar/turn)
MB000088	MBSN-060-AASA-02-G12-N500	V2: G1/2" T:G 3/8" M: G1/8" V1,Pil: G1/4" C2: Ø9	① :420 ② :280	① :200-450 ② :100-350	① :366 ② :102

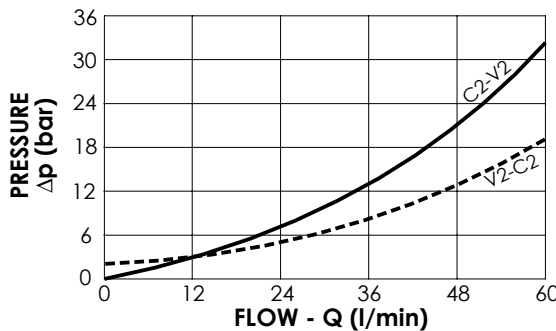
CONCRETE PUMP CRANES

MBSN-060-APST



SPECIFICATIONS

Max. operating pressure:	420 bar
Rated flow:	60 l/min
Manifold:	Steel
Weight:	2,61 kg



NOTES

Setting: at least 1.3 times the load induced pressure

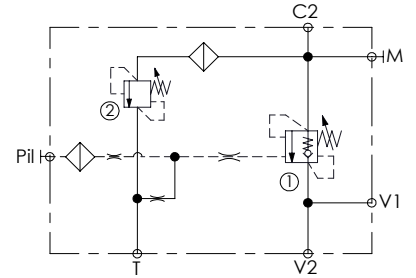
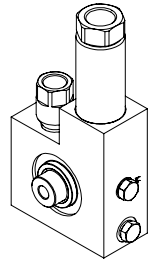
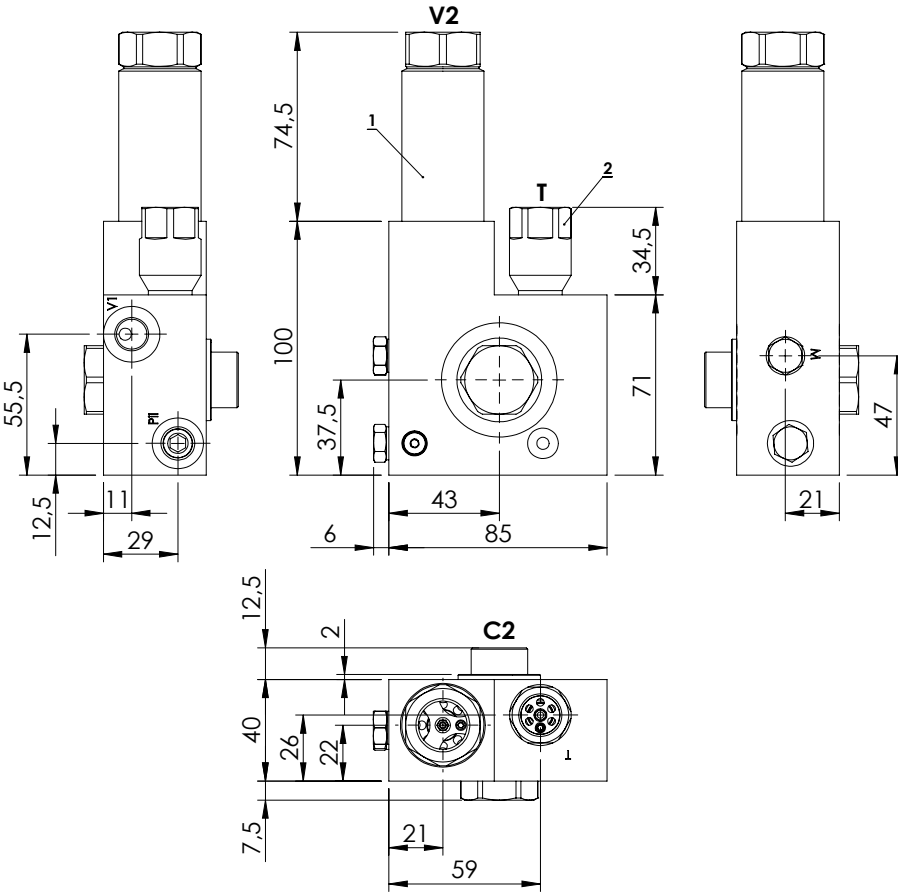
Pilot ratio: 7:1

ORDERING CODES

Quick code	Description	Oper. pilot ratio	Main ports size	Standard setting (bar, Q=5 l/min)	Adjust. range (bar)	Pressure increase (bar/turn)
MB000823	MBSN-060-APST-01-M22-N420	1,5:1	T:G3/8" V2:G1/2" V1,M,Pil:G1/4" C2:M22x1,5	① :380 ② :400	① :200-420 ② :150-500	① :366 ② :167
MB000824	MBSN-060-APST-02-M22-N420	2,3:1	T:G3/8" V2:G1/2" V1,M,Pil:G1/4" C2:M22x1,5	① :210 ② :230	① :200-420 ② :150-500	① :366 ② :167

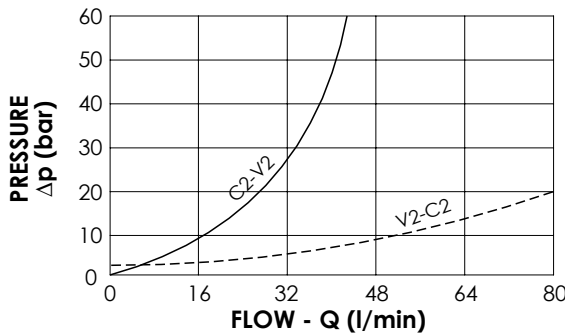
CONCRETE PUMP CRANES

MBSN-080-APST



SPECIFICATIONS

Max. operating pressure:	500 bar
Rated flow:	80 l/min
Manifold:	Steel
Weight:	2,5 kg



NOTES

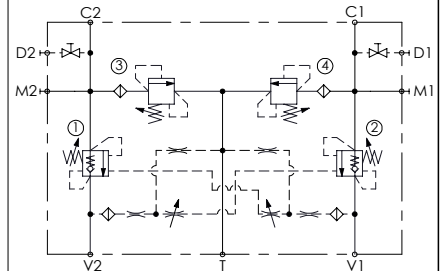
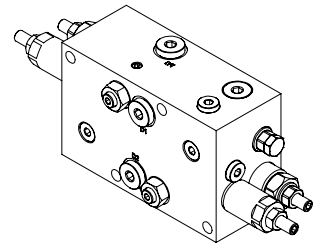
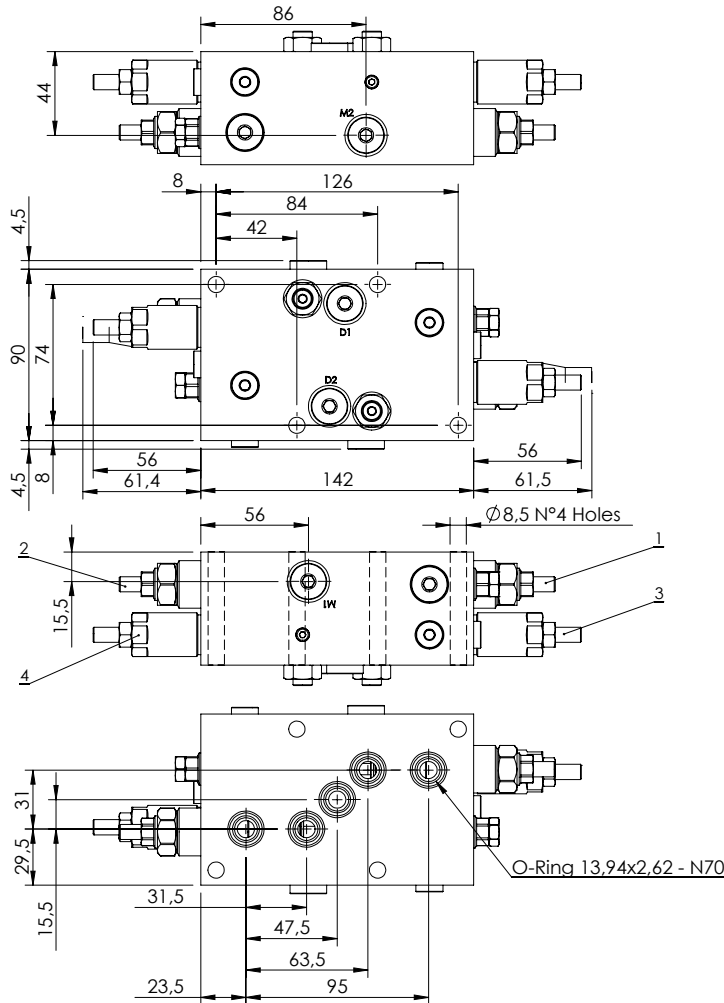
Setting: at least 1.3 times the load induced pressure
 Banjo can be installed on both sides
 Pilot ratio: 7:1

ORDERING CODES

Quick code	Description	Oper. Pilot ratio	Main ports size	Standard setting (bar)	Adjust. range (bar)	Pressure increase (bar/turn)
MB000913	MBSN-080-APST-02-M22-N500	2,3:1	C2:M22x1,5 V2:G 1/2" V1,Pil:G 1/4" T:G 3/8" M:M8x1	① 380 Q=5 l/min ② 420 Crack. pr.	① 200-450 ② 250-450	① 366 ② 195

CONCRETE PUMP CRANES

MBSN-060-ZENV

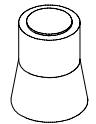


SPECIFICATIONS

Max. operating pressure:	500 bar
Rated flow:	60 l/min
Manifold:	Aluminium
Weight:	2,63 kg

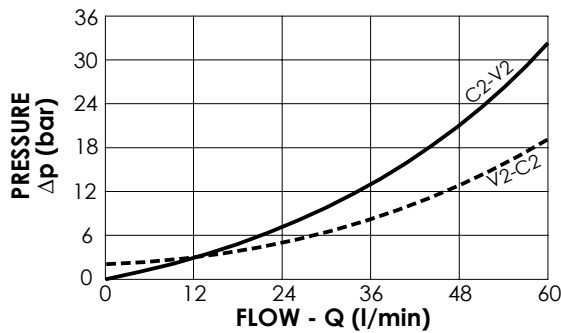
SEALING CAP

Ordering code:
AT000020



NOTES

Setting: at least 1.3 times the load induced pressure



ORDERING CODES

Quick code	Description	Pilot ratio	Main ports size	Standard setting (bar, Q=5 l/min)	Adjust. range (bar)	Pressure increase (bar/turn)
MB000931	MBDN-060-ZENV-04-TPF-N500	4:1	C1,C2,V1,V2,T:Ø9 M1,M2:G1/4"	①②:400 ③④:390	①②:250-420 ③④:100-350	①②:150 ③④:106



1800-OILSOL
1800-645765

<https://oilsolutions.com.au/>

sales@oilsolutions.com.au

SECTION 20. 4

APPLICATIONS - SALT SPRAYERS

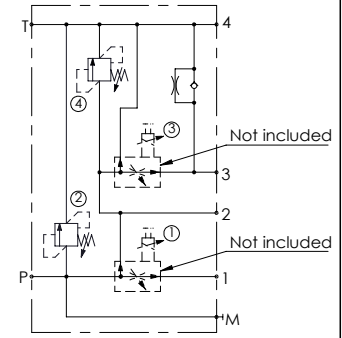
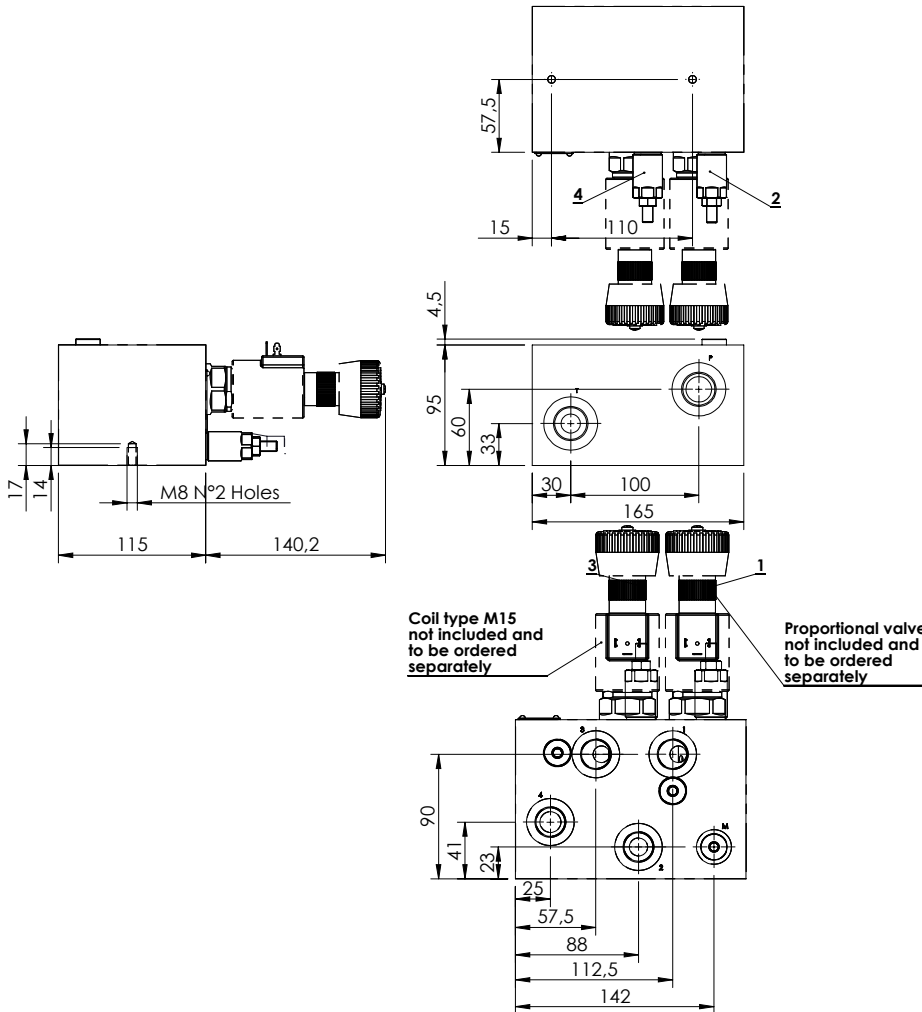
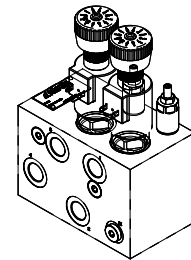


Hydraulic scheme	Valve description	Valve type	Rated flow (l/min)	Max. pressure (bar)	Installation	Main port size or cavity type	Page
	BNFN-140-LPNR-02	Proportional valve	140	250	In line	M26x1,5	20.04.010
	BNFN-140-LPNR-03	Proportional valve	140	250	In line	M27x1,5	20.04.020
		Directional valve	40	320	In line	G 3/8"	20.04.030
		Directional valve	40	320	In line	G 3/8"	20.04.040

SALT SPRAYER VALVE

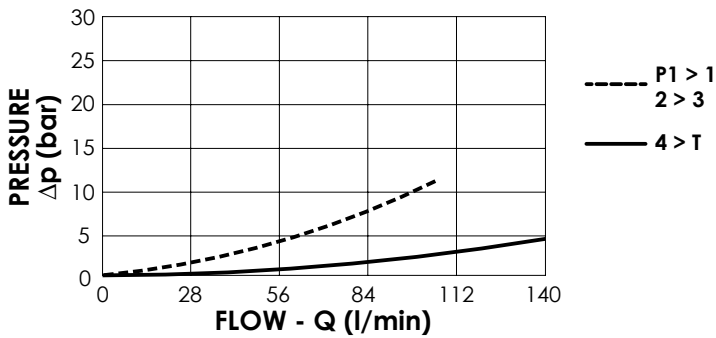
BNFN-140-LPNR

PROPORTIONAL VALVE



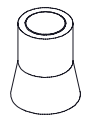
SPECIFICATIONS

Max. operating pressure:	250 bar
Rated flow:	140 l/min
Max regulated flow:	0 - 80 l/min
Manifold:	Aluminium
Weight:	4,4 kg
Coil type:	M15
Cavity type:	SAE-16-3N



SEALING CAP:

Ordering code:
AT000020



NOTES

- See chapter 18.00.000 for coils.
- See chapter 16.00.000 for proportional valve info.

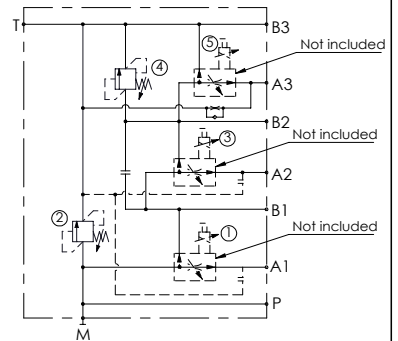
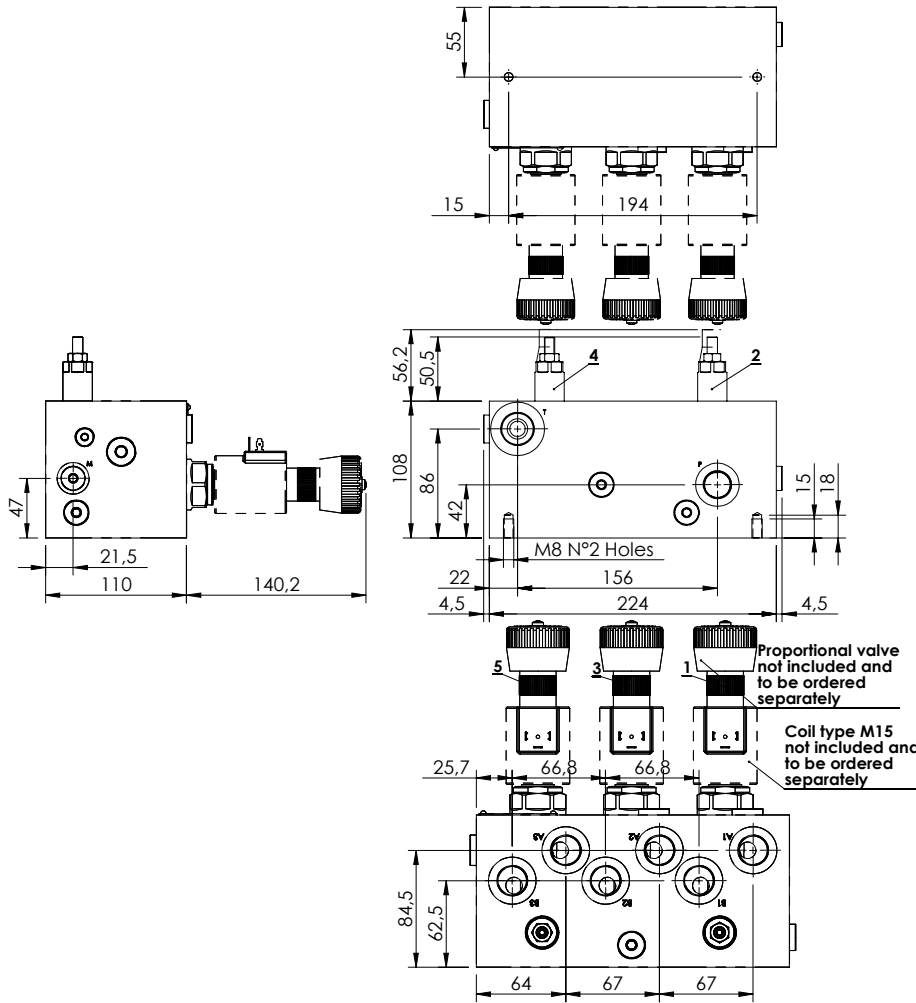
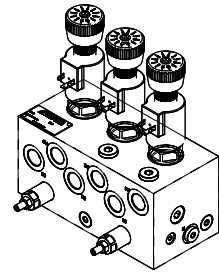
ORDERING CODES

Quick code	Description	Main ports size	Standard setting (bar, Q=5 l/min)	Adjust. range (bar)	Pressure increase (bar/turn)
BF000020	BNFN-140-LPNR-02-M26-N250	1,2,3,4: M22x1,5 P,T: M27x2 M: M14x1,5	②:200 ④:100	②:50-210 ④:30-100	②:42 ④:20

SALT SPRAYER VALVE

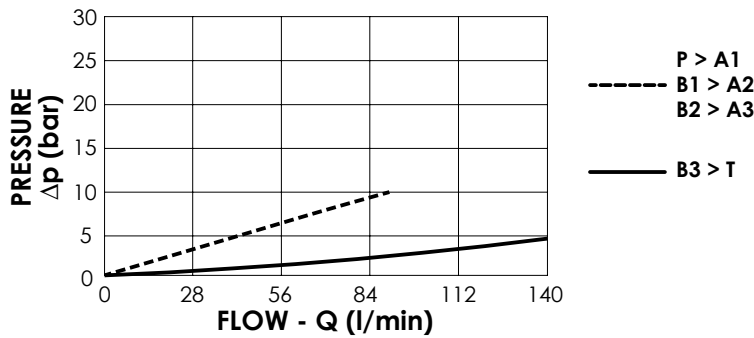
BNFN-140-LPNR

PROPORTIONAL VALVE



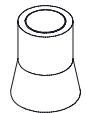
SPECIFICATIONS

Max. operating pressure:	250 bar
Rated flow:	140 l/min
Max regulated flow:	0 - 80 l/min
Manifold:	Aluminium
Weight:	6,4 kg
Coil type:	M15
Cavity type:	SAE-16-3N



SEALING CAP:

Ordering code:
AT000020



NOTES

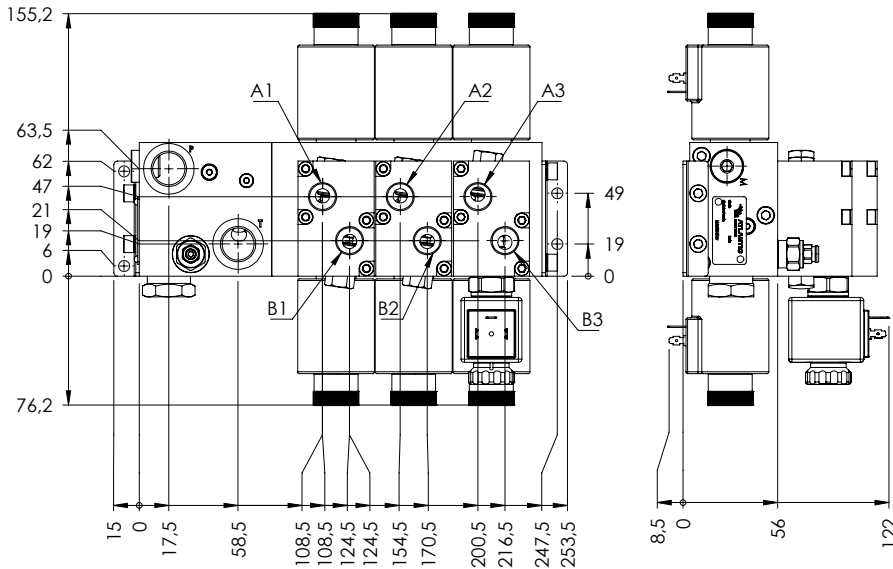
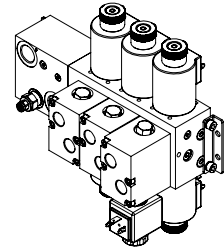
-See chapter 18.00.000 for coils.
-See chapter 16.00.000 for proportional valve info.

ORDERING CODES

Quick code	Description	Main ports size	Standard setting (bar, Q=5 l/min)	Adjust. range (bar)	Pressure increase (bar/turn)
BF000019	BNFN-140-LPNR-03-M26-N250	A,B,P: M22x1,5 T: M26x1,5 M: M14x1,5	②:200 ④:100	②:50-210 ④:30-100	②:42 ④:20

SALT SPRAYER VALVE

EBLE-040-CCSM

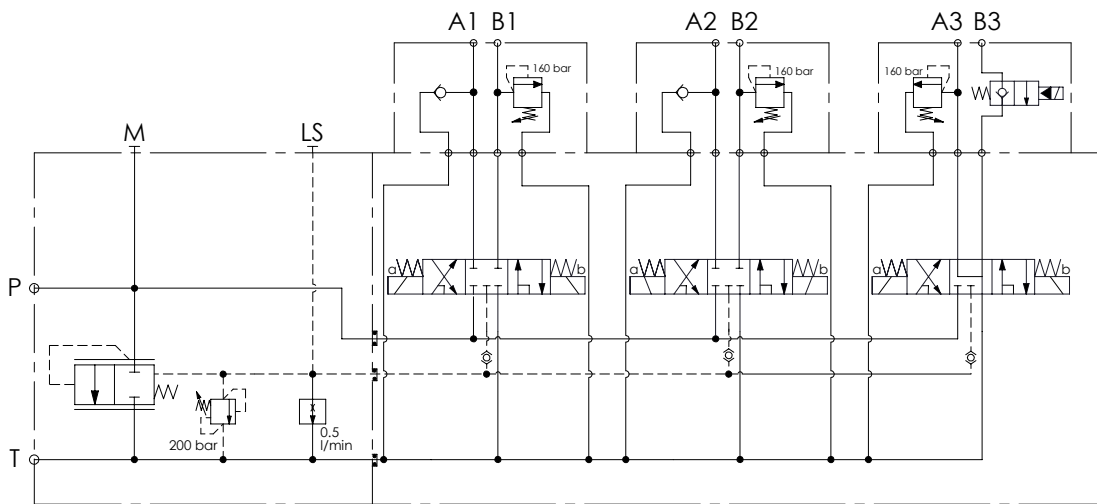


SPECIFICATIONS

Max. operating pressure:	210 bar
Rated flow:	40 l/min
Manifold:	Cast-iron
Weight:	11,8 kg

NOTES

For more informations see the chapter 19.00.000

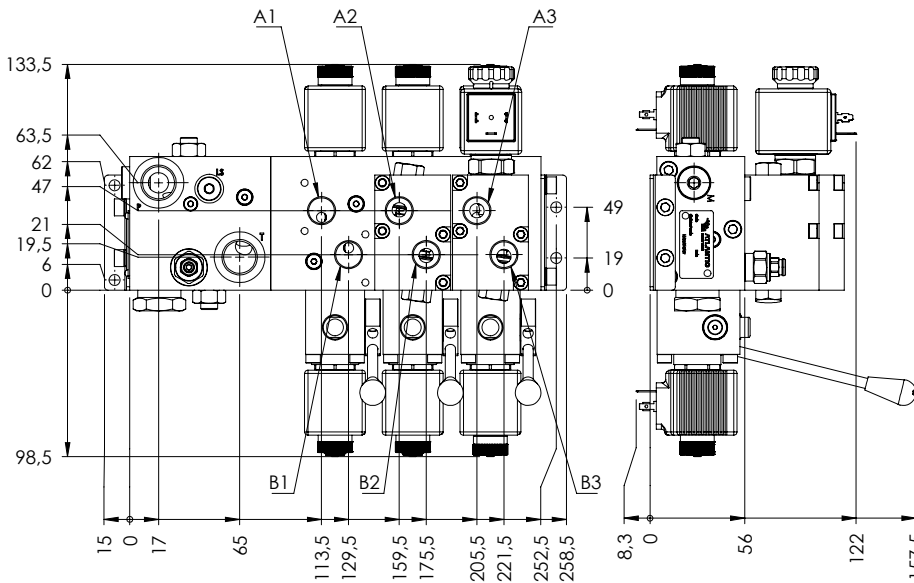
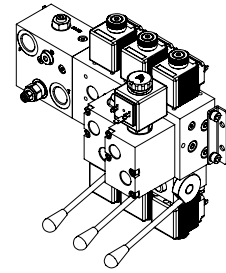


ORDERING CODES

Quick code	Description	Main ports size:	General relief setting: (bar)	Voltage: (V)	Coil type:
EB000041	EBLE-040-CCSM-MX-G12-BHRN	A,B: G3/8" P,T: G1/2" M: G1/4"	200	DIN 43650	24

SALT SPRAYER VALVE

EBLE-040-CCLM

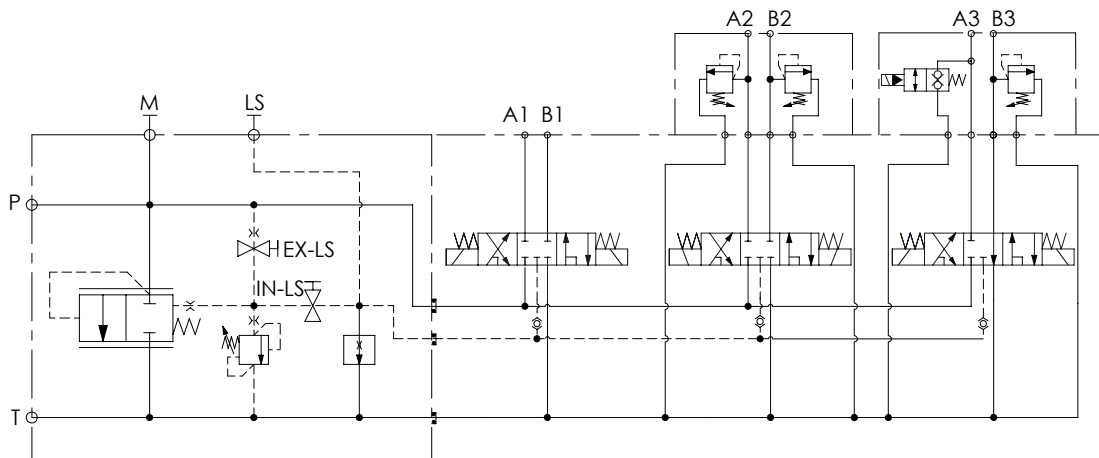


SPECIFICATIONS

Max. operating pressure:	210 bar
Rated flow:	40 l/min
Manifold:	Cast-iron
Weight:	10,6 kg

NOTES

For more informations see the chapter 19.00.000



ORDERING CODES

Quick code	Description	Main ports size:	General relief setting: (bar)	Voltage: (V)	Coil type:
EB000042	EBLE-060-CCLM-MX-G12-BHRN	A,B: G3/8" P,T: G1/2" M: G1/4" LS: G1/8"	200	DIN 43650	24



1800-OILSOL
1800-645765

<https://oilsolutions.com.au/>

sales@oilsolutions.com.au

SECTION 20. 5

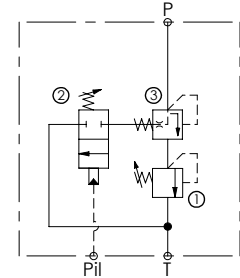
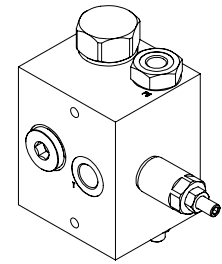
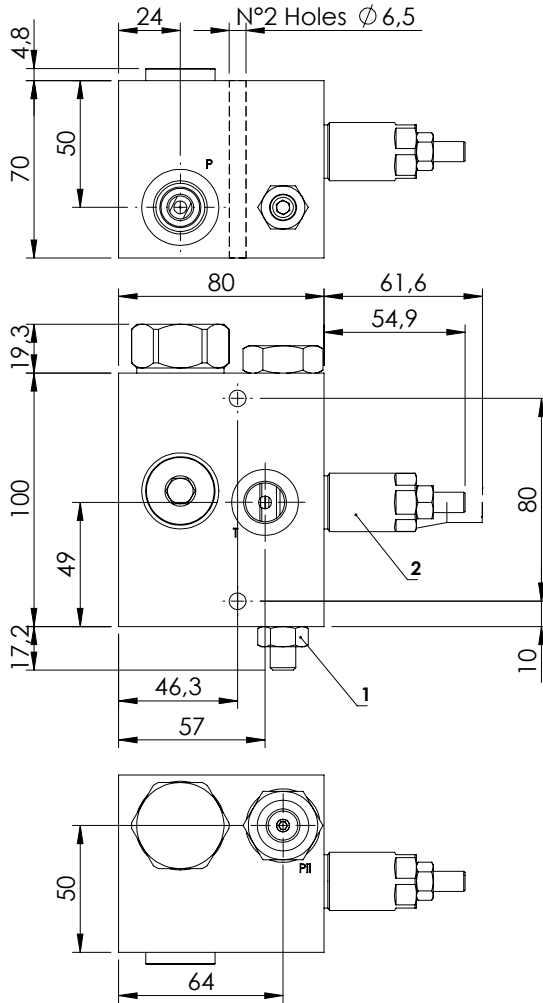
APPLICATIONS - GARBAGE COMPACTORS



Hydraulic scheme	Valve description	Valve type	Rated flow (l/min)	Max. pressure (bar)	Installation	Main port size or cavity type	Page
	MTLN-030-TLSL	-	30	210	In line	G 1/2"	20.05.010
	MDAF-080-BRNR	-	80	210	In line	G 1/2"	20.05.020
	MRDN-100-ZLNP	-	100	350	In line	G 3/4"	20.05.030
	BNND-100-NLBCU	-	150	350	In line	G 3/4"	20.05.040

GARBAGE COMPACTORS

MTLN-030-TLSL

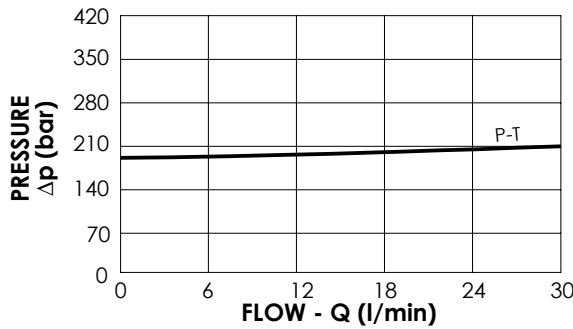
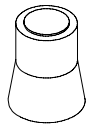


SPECIFICATIONS

Max. operating pressure:	210 bar
Rated flow:	30 l/min
Manifold:	Aluminium
Weight:	1,9 kg

SEALING CAP

Ordering code:
AT000020



NOTES

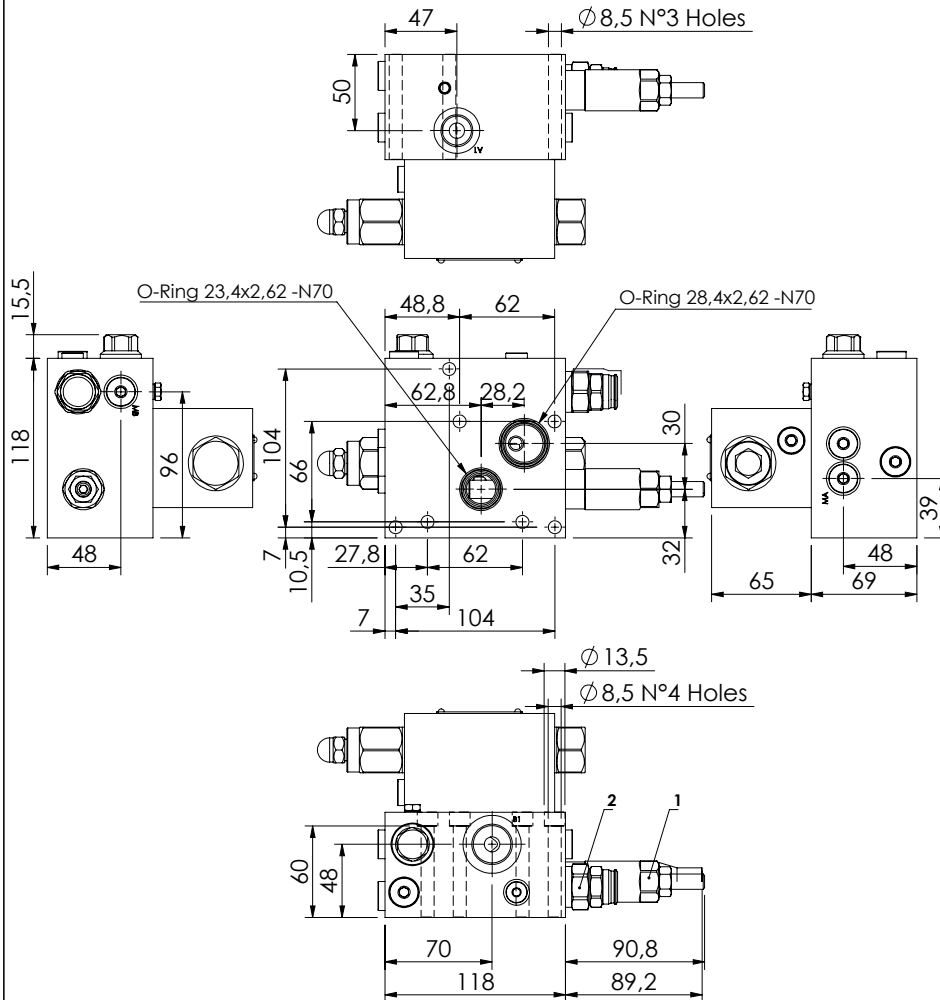
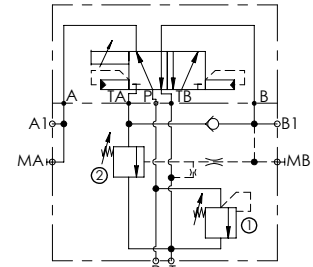
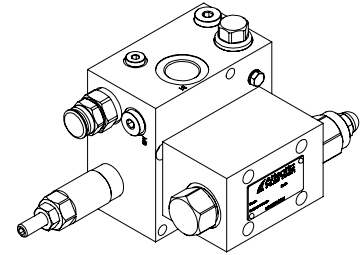
ORDERING CODES

Quick code	Description	Main ports size	Standard setting (bar, Q=5 l/min)	Adjust. range (bar)	Pressure increase (bar/turn)
MT000008	MTLN-030-TLSL-NP-G12-N180	P, T: G 1/2" Pil: G 1/4"	①: 180 ②: 40	①: 40-200 ②: 10-50	①: 49 ②: 10

GARBAGE COMPACTORS

MDAF-080-BRNR

REGENERATIVE FUNCTION



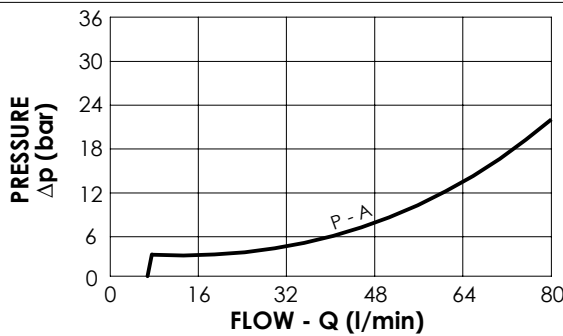
SPECIFICATIONS

Max. operating pressure:	210 bar
Rated flow:	80 l/min
Manifold:	Aluminium
Weight:	5,99 kg

SEALING CAP

Ordering code:	
AT00021 (Valve n.1)	PT000243 (Valve n.2)

NOTES

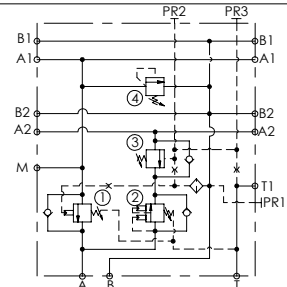
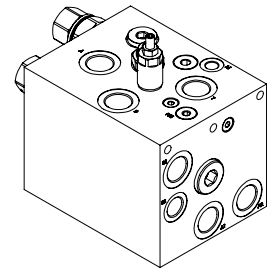
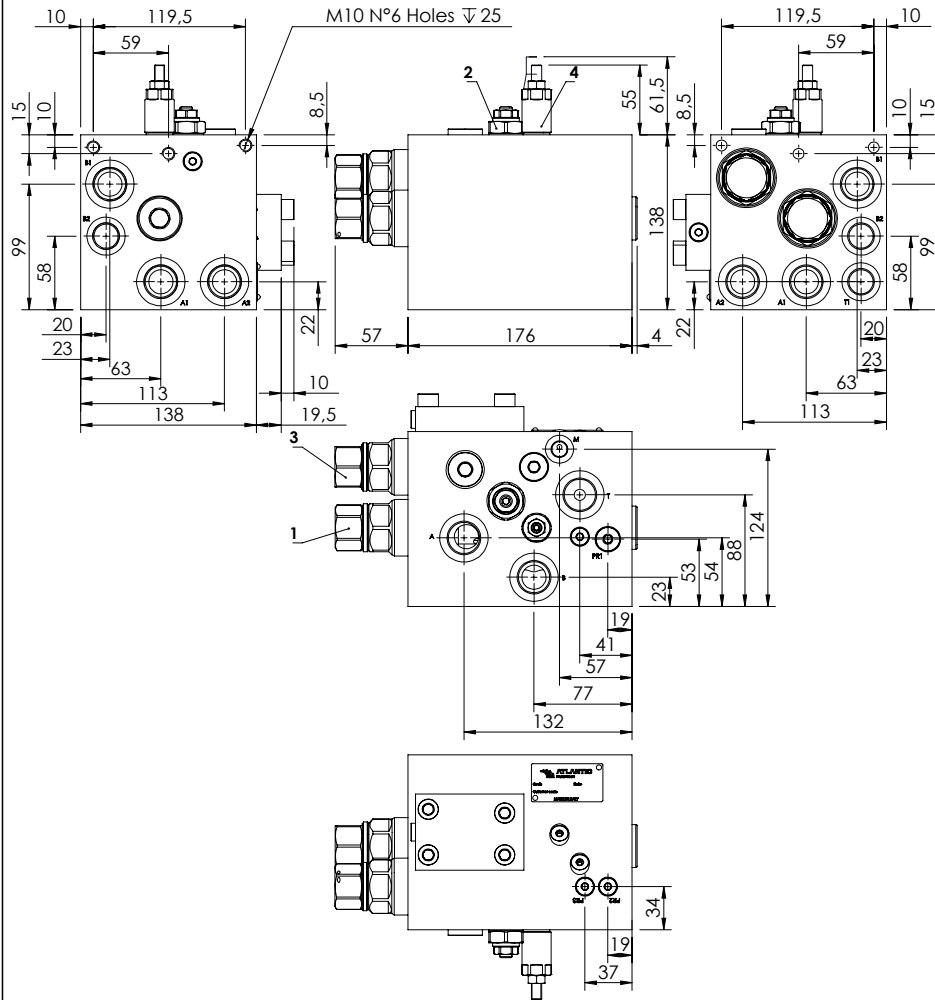


ORDERING CODES

Quick code	Description	Main ports size	Standard setting (bar, Q=5 l/min)	Adjust. range (bar)	Pressure increase (bar/turn)
MD000023	MDAF-080-BRNR-NP-N10-N210	P,A1:G1/2" T,B1:G3/4" MA,MB:G 1/4"	① 180 ② 130	① 100-350 ② 70-140	① 42 ② -

GARBAGE COMPACTORS

MRDN-150-ZLNP

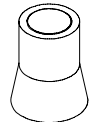


SPECIFICATIONS

Max. operating pressure:	350 bar
Rated flow:	150 l/min
Manifold:	Aluminium
Weight:	10,18 kg

SEALING CAP

Ordering code:
AT000020



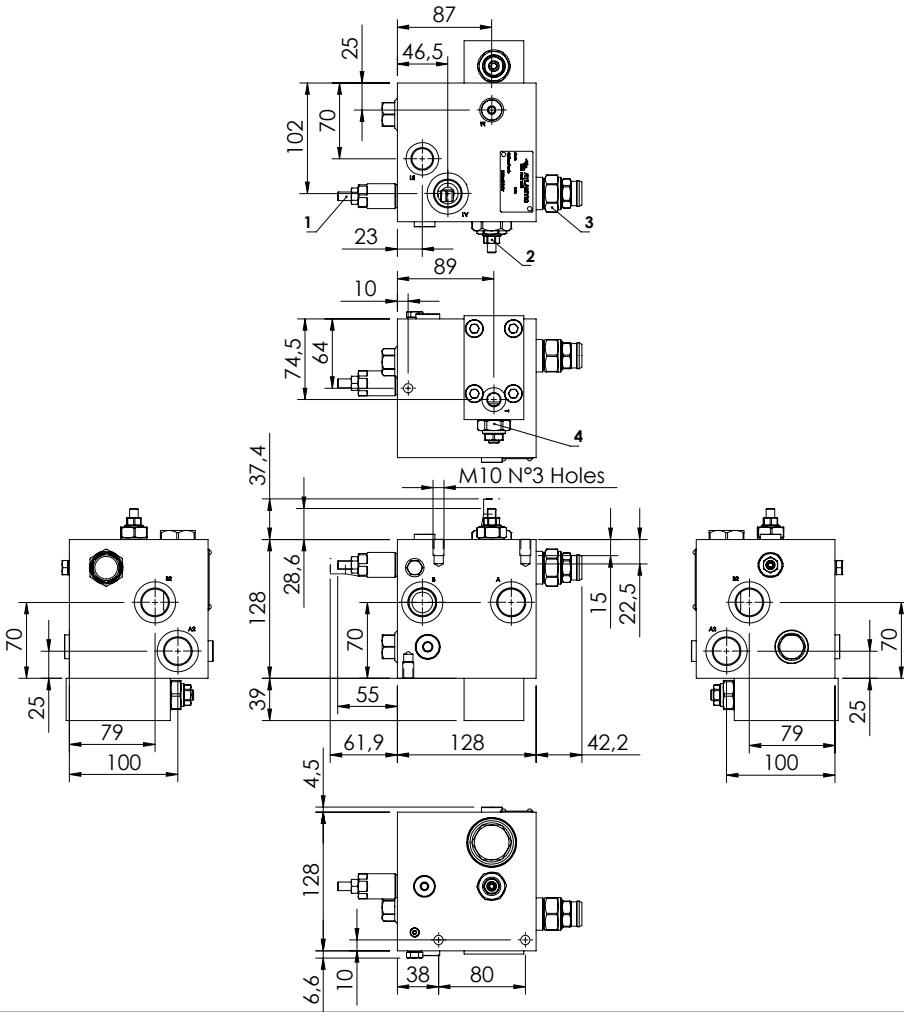
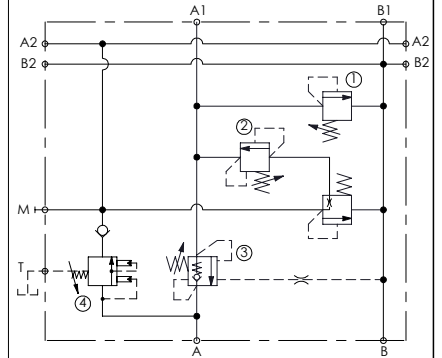
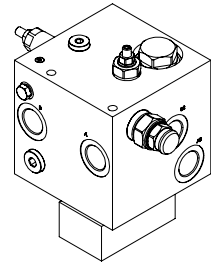
NOTES

ORDERING CODES

Quick code	Description	Pilot ratio	Main ports size	Standard setting (bar, Q=5 l/min)	Adjustment range (bar)	Pressure increase (bar/turn)
MB000700	MRDN-150-ZLNP-06-G34-N350	6:1	A, A1, A2, B, B1, T: G3/4" B2, T1: G1/2" T2, M1, T3: G1/4"	① 300 ③ 350 ② 175 ④ 280	① 100-350 ③ 60-210 ② 140-350 ④ 100-350	① 105 ③ 62 ② 70,5 ④ 91

GARBAGE COMPACTORS

BNND-150-NLBCU



SPECIFICATIONS

Max. operating pressure:	350 bar
Rated flow:	150 l/min
Manifold:	Aluminium
Weight:	3,2 kg

SEALING CAP

Ordering code:

AT000020
Relief valve



ST000012
Counterbalance valve



ORDERING CODES

Quick code	Description	Main ports size	Standard setting (bar, Q=5 l/min)	Adjustment range (bar)	Pressure increase (bar/turn)
BD000131	BNND-150-NLBCU-08-G34-N350	A,A1,A2,B,B2: G3/4" B1: G1/2" M,T: G1/4"	① 280 ③ 230 ② 50 ④ 175	① 100-350 ③ 60-210 ② 90-210 ④ 140-350	① 91 ③ 50 ② 87 ④ 70,5



1800-OILSOL
1800-645765

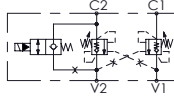
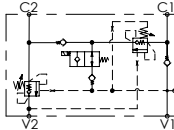
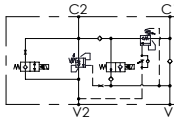
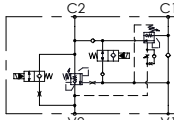
<https://oilsolutions.com.au/>

sales@oilsolutions.com.au

SECTION 20. 6

APPLICATIONS - HOOK LOADERS

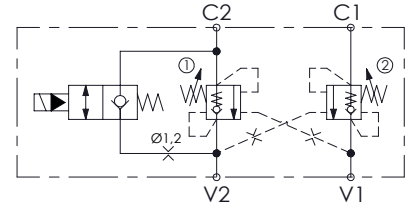
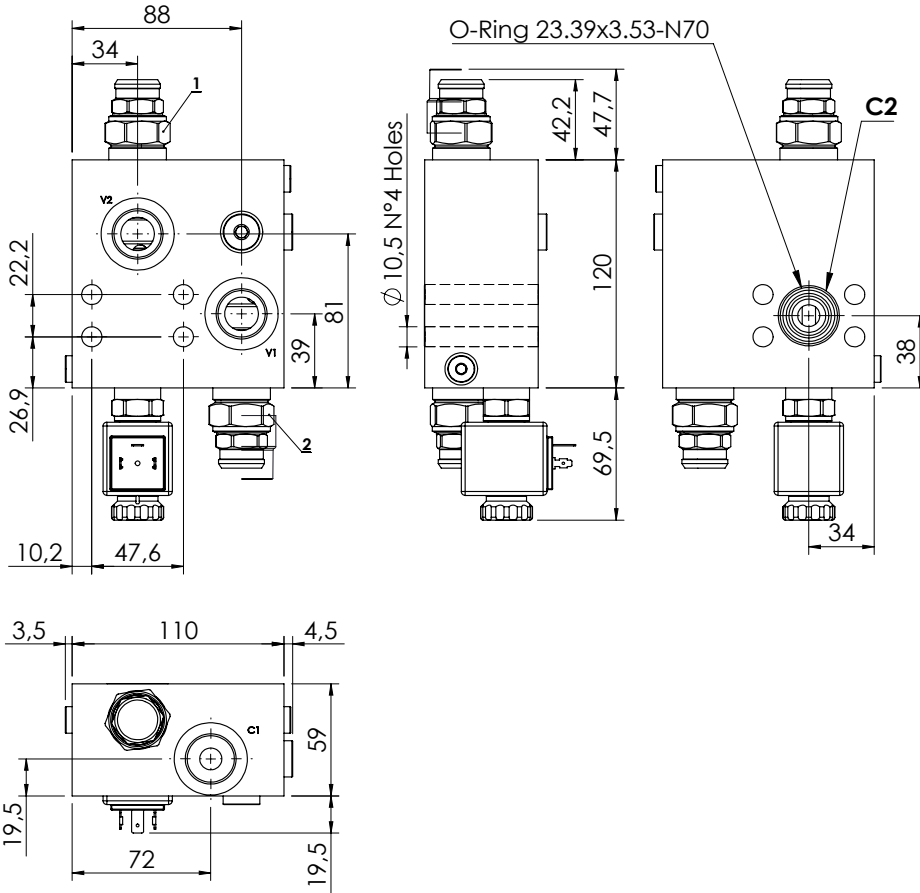
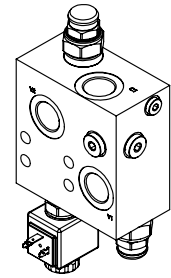


Hydraulic scheme	Valve description	Valve type	Rated flow (l/min)	Max. pressure (bar)	Installation	Main port size or cavity type	Page
	MBDN-150-ZABE	Double acting with electric by-pass	150	350	In line	G 3/4"	20.06.010
	MBPN-150-ZLNR	Regenerative with electric by-pass	150	350	In line	G 3/4"	20.06.020
	MRSN-150-ALBE	Regenerative with electric by-pass	150	350	In line	G 3/4"	20.06.030
	MRLN-150-ZABE	Regenerative with electric by-pass	150	350	In line	G 3/4"	20.06.040

HOOK LOADERS

MBDN-150-ZABE

**DOUBLE ACTING
WITH ELECTRIC BY-PASS**



SPECIFICATIONS

Max. operating pressure:	350 bar
Rated flow:	150 l/min
Manifold:	Steel
Weight:	2,75 kg
Coil:	M7 Type
Voltage - Class:	26V - H
Connector:	DIN 43650

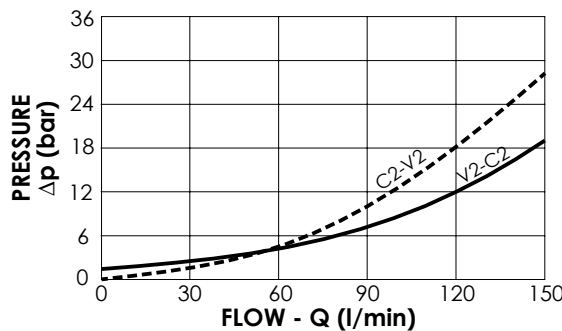
SEALING CAP

Ordering code:
ST000012



NOTES

Setting: at least 1.3 times the load induced pressure



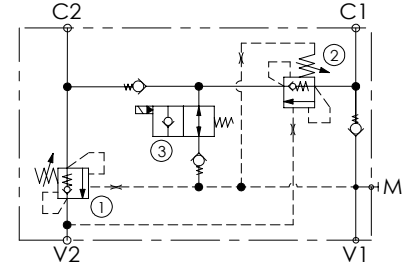
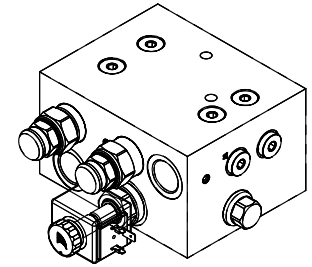
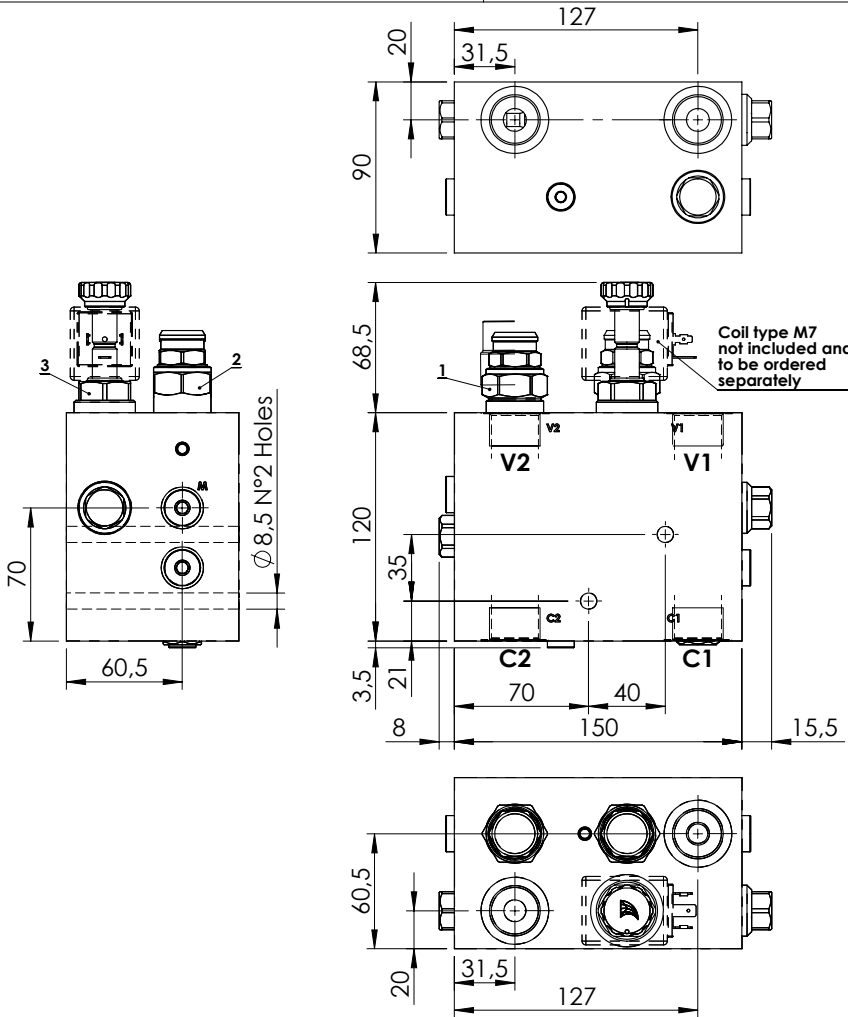
ORDERING CODES

Quick code	Description	Pilot ratio	Main ports size	Standard setting (bar, Q=5 l/min)	Adjust. range (bar)	Pressure increase (bar/turn)
MB000915	MBDN-150-ZABE-04-G34-N350	4:1	V1,V2,C1: G3/4" C2: 3/4 SAE 3000	350	100-350	104

HOOK LOADERS

MBPN-150-ZLNR

REGENERATIVE
WITH ELECTRIC BY-PASS



SPECIFICATIONS

Max. operating pressure:	350 bar
Rated flow:	150 l/min
Manifold:	Aluminium
Weight:	4,92 kg
Coil type:	M7

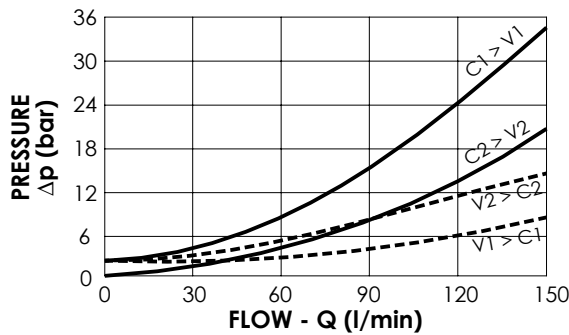
SEALING CAP

Ordering code:
ST000012



NOTES

Setting: at least 1.3 times the load induced pressure



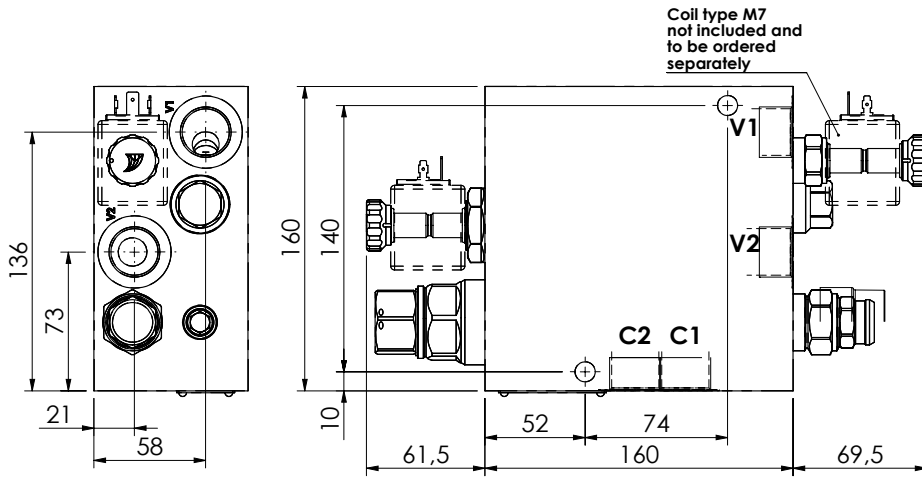
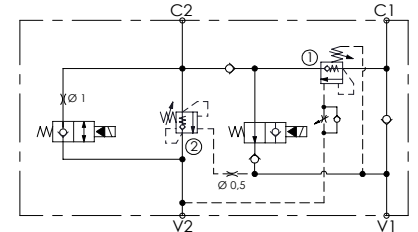
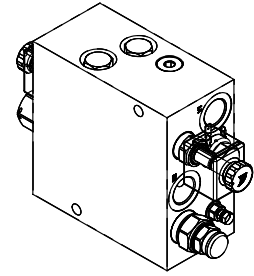
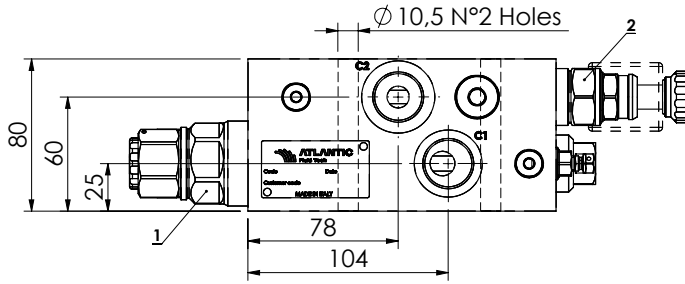
ORDERING CODES

Quick code	Description	Pilot ratio	Main ports size	Standard setting (bar, Q=5 l/min)	Adjust. range (bar)	Pressure increase (bar/turn)
MB000919	MBPN-150-ZLNR-04-G34-N210	4:1	C1,C2,V1,V2: G3/4" M: G1/4"	350	100-350	104

HOOK LOADERS

MRSN-150-ALBE

REGENERATIVE
WITH ELECTRIC BY-PASS

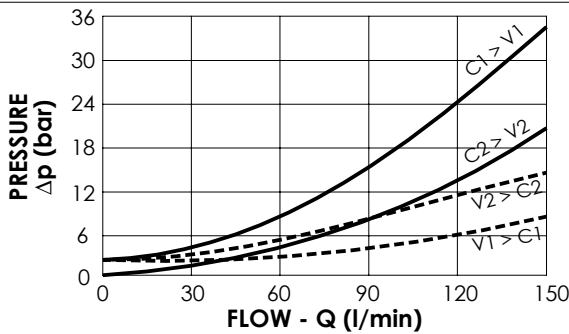


SPECIFICATIONS

Max. operating pressure:	350 bar
Rated flow:	150 l/min
Manifold:	Steel
Weight:	14,95 kg
Coil type:	M7

SEALING CAP

Ordering code:
ST00012



NOTES

Setting: at least 1.3 times the load induced pressure

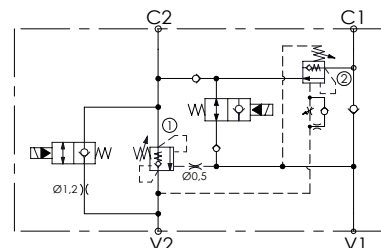
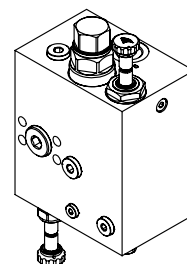
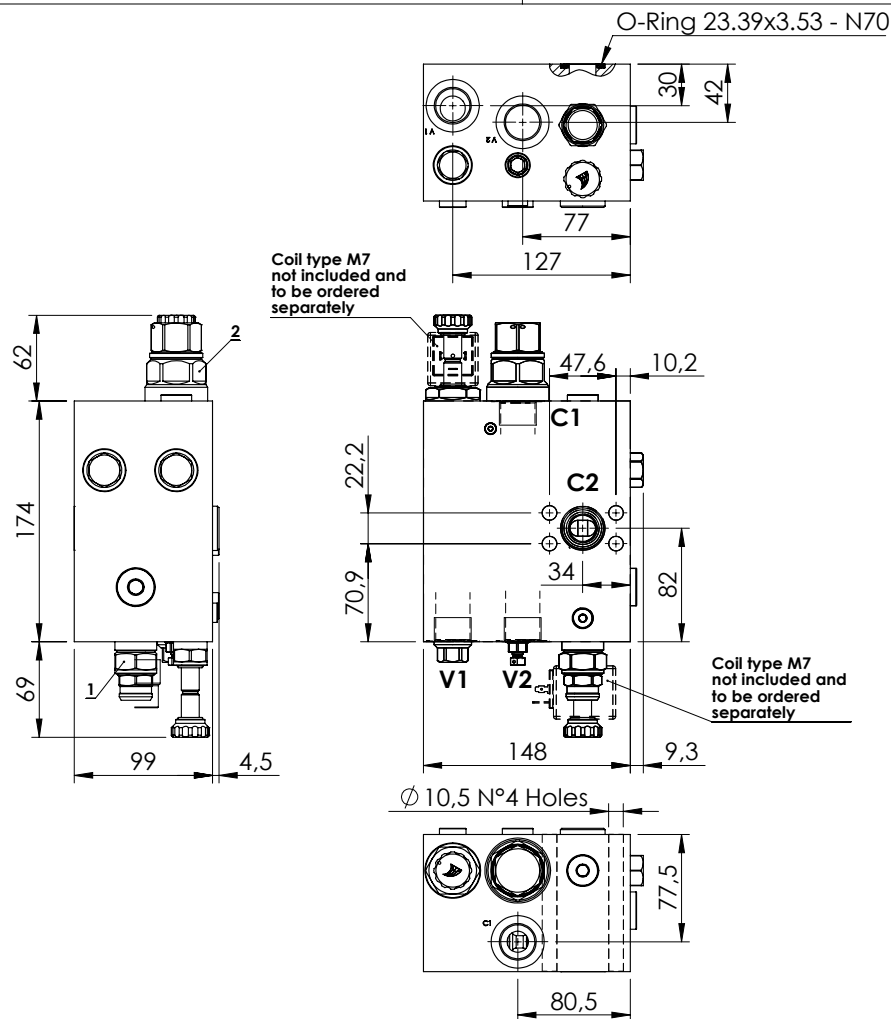
ORDERING CODES

Quick code	Description	Pilot ratio	Main ports size	Standard setting (bar, Q=5 l/min)	Adjust. range (bar)	Pressure increase (bar/turn)
MB000920	MRSN-150-ALBE-04-G34-N350	4:1	V1, V2: G3/4" C1, C2: G3/4"	350	100-350	104

HOOK LOADERS

MRLN-150-ZABE

REGENERATIVE
WITH ELECTRIC BY-PASS



SPECIFICATIONS

Max. operating pressure:	350 bar
Rated flow:	150 l/min
Manifold:	Aluminium
Weight:	7,59 kg
Coil type:	M7

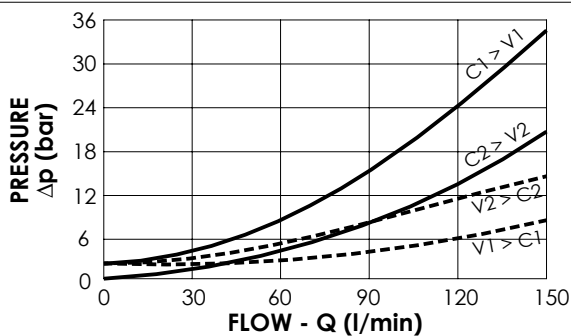
SEALING CAP

Ordering code:
ST000012



NOTES

Setting: at least 1.3 times the load induced pressure



ORDERING CODES

Quick code	Description	Pilot ratio	Main ports size	Standard setting (bar, Q=5 l/min)	Adjust. range (bar)	Pressure increase (bar/turn)
MB000119	MRLN-150-ZABE-04-G34-N350	4:1	V2,C2,C1: G3/4" C2: Ø22	350	100-350	104