



OIL SOLUTIONS

PO Box 38

Strathfieldsaye, VIC, 3551

1800 OIL SOL

1800 645 765

sales@oilsolutions.com.au

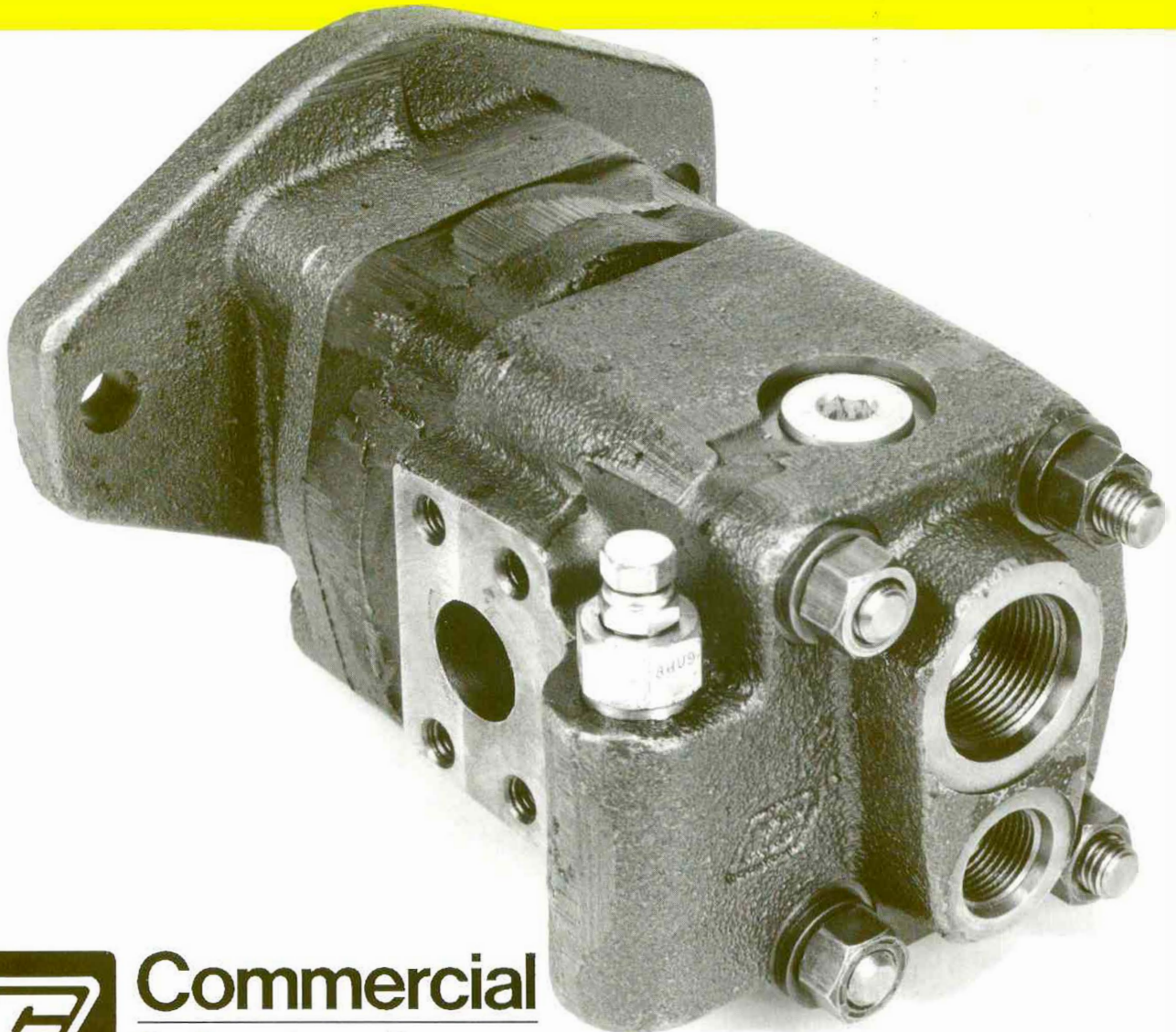
www.oilsolutions.com.au

"For All Your Hydraulic Needs"

Priority Outlet Valve

For P315 Pumps

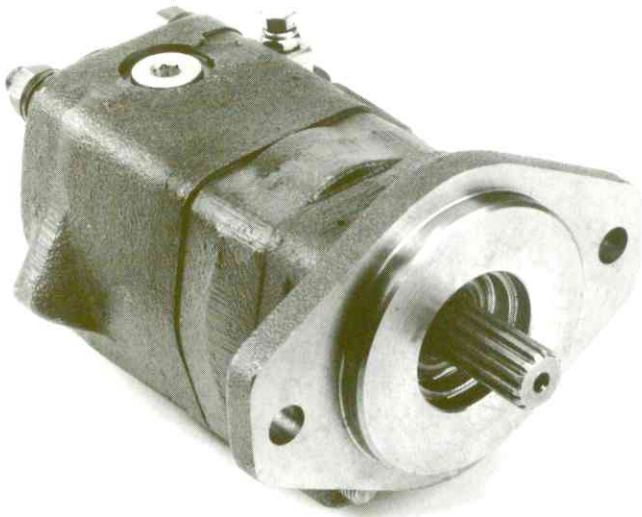
**1 to 11 gpm
Priority Flow**



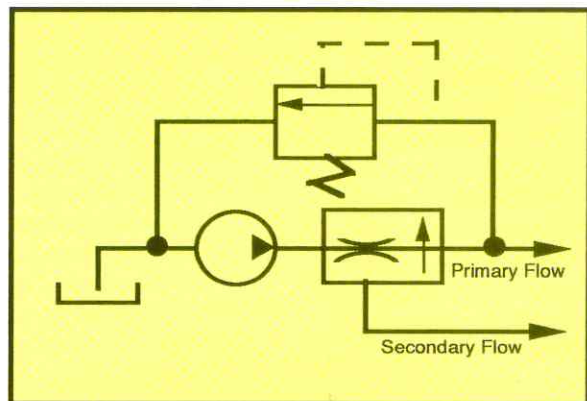
®



**Commercial
Intertech**



Circuit Symbol



Priority Outlet Valves for P315 pumps

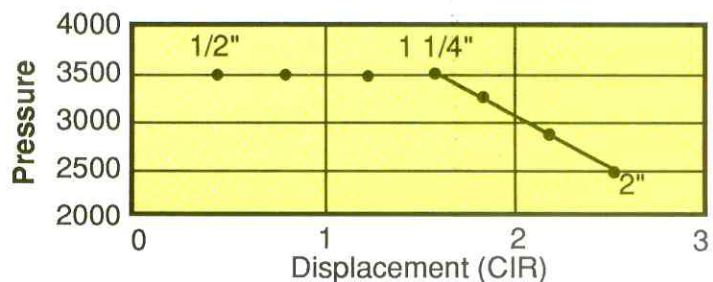
Commercial's priority outlet valves assure a constant supply of oil to a machine function regardless of changes in the pump's speed or the increased demand of other circuits. Pump output, however, must be equal to or greater than the primary flow requirement.

Primary flow from the P315 pump can be specified in a range from 1 to 11 gpm and is controlled to within $\pm 10\%$ of the nominal flow. Flow is controlled by a fixed orifice and is not adjustable in the field.

Secondary flow is available to any other machine function or back to tank. The fully pressure compensated valve spool enables primary and secondary flows to be pressurized independently or at the same time. A built-in relief valve protects the primary circuit from excessive pressure by relieving to the pump's inlet.

This priority valve is particularly useful for power steering circuits where a constant flow of oil is vital. Also, by combining two functions in one pump, the need for a second PTO and pump is eliminated.

P315 Max Operating Pressure By Gear Width



1/2" to 1 1/4" – 3500 psi
 1 1/2" – 3250 psi
 1 3/4" – 2900 psi
 2" – 2500 psi

P315 Output Data

In gpm @ maximum rated pressure

| Speed RPM | Gear Width (inches) | | | | | | |
|--------------|---------------------|------|------|-------|-------|-------|------|
| | 1/2 | 3/4 | 1 | 1 1/4 | 1 1/2 | 1 3/4 | 2 |
| 600 | 1.0 | 1.4 | 2.5 | 2.8 | 3.5 | 4.6 | 5.1 |
| 1200 | 2.5 | 3.9 | 5.7 | 7.0 | 8.5 | 10.3 | 11.7 |
| 1800 | 4.1 | 6.4 | 8.9 | 11.1 | 13.6 | 16.1 | 18.4 |
| 2000 | 4.6 | 7.2 | 10.0 | 12.5 | 15.2 | 18.0 | 20.6 |
| 2400 | 5.6 | 8.9 | 12.2 | 15.3 | 18.6 | 21.8 | 25.0 |
| 3000 | 7.2 | 11.4 | 15.4 | 19.4 | 23.6 | 27.5 | 31.6 |

Test specifications for output data:

Temperature @ 120°F – Viscosity @ 100SSU

All of Commercial's pumps are available as tandem or multiple units of two or more sections.

For mountings and drive shaft configurations that are available for Commercial's pumps, please refer to the following catalogs:

- Model 25X Catalog H59
- Models P30/50 Catalog H60
- Models P31/51 Catalog H58
- Models P315 & 330 Catalog H73

| Shaft End Cover Type | A | B | C | D | E | F | G | H |
|----------------------|------|-----|------|------|------|------|-----|-----|
| SAE A 2-Bolt | 3.25 | .25 | 2.09 | 4.19 | 5.12 | 3.75 | .44 | .38 |
| SAE B 2-Bolt | 4.00 | .38 | 2.88 | 5.75 | 6.88 | 4.75 | .56 | .50 |

