

CONTINENTAL



OIL SOLUTIONS

PO Box 38
Strathfieldsaye, VIC, 3551
1800 OIL SOL
1800 645 765
sales@oilsolutions.com.au
www.oilsolutions.com.au
"For All Your Hydraulic Needs"

CONTINENTAL HYDRAULICS

C05MSV-P*

PILOT OPERATED CHECK VALVE



C05MSV-P* - PILOT OPERATED CHECK VALVE

C05MSV-P*

PILOT OPERATED CHECK VALVE



DESCRIPTION

This valve utilizes a guided spool and poppet-seat check valves as a blocking or load-holding device for high pressure applications.

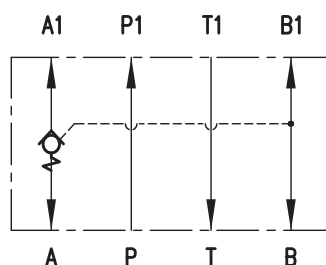
OPERATIONS

This valve allows free flow from the directional control valve work port to the load and blocks flow in the opposite direction. Flow is allowed from the load to the directional control valve work port when 40% of the load induced pressure is sensed in the opposing directional control valve work port.

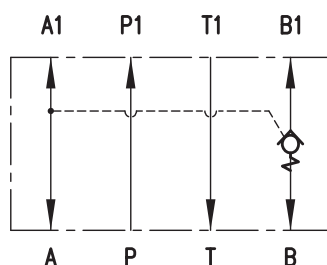
TYPICAL PERFORMANCE SPECIFICATIONS

MAXIMUM OPERATING PRESSURE		5000 psi	350 bar
CRACKING PRESSURE		30 psi	2 bar
MAXIMUM FLOW RATE		32 gpm	120 l/min
PILOT RATIO		2.3 : 1	
DECOMPRESSION RATIO		14.9 : 1	
MOUNTING SURFACE		NFPA D05 ISO 4401-05-04-0-05	
WEIGHT	C05MSV-PC	4.9 lbs	2.2 kg
	C05MSV-PA -PB	4.2 lbs	1.9 kg

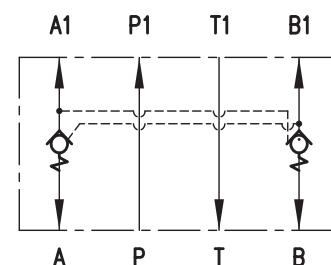
AVAILABLE VERSIONS



C05MSV-PA



C05MSV-PB



C05MSV-PC



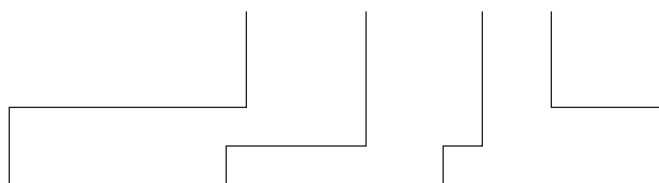
1800-OILSOL
1800-645765

<https://oilsolutions.com.au/>

sales@oilsolutions.com.au

IDENTIFICATION CODE

C05MSV-P - **30** - **C** - _____ DESIGN LETTER



CONTROL PORT	
A	Port A
B	Port B
C	Port A and B

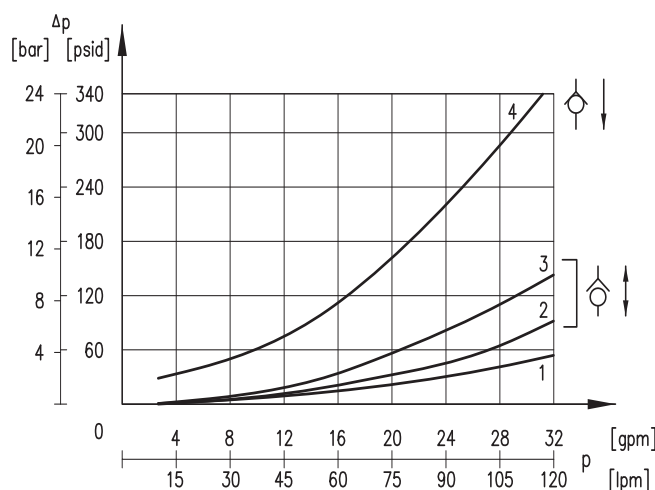
CRACKING PRESSURE	
30	30 psi

SEAL	
A	Buna (STD)
G	Viton

BODY MATERIAL	
C	Cast Iron

TYPICAL ORDERING CODE:
C05MSV-PA-30-AC-C

PERFORMANCE CURVE



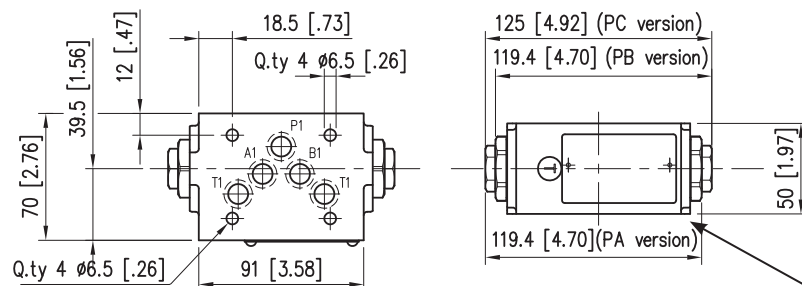
VALVE	FLOW CURVE NUMBER					
	A1→A	B1→B	P→P1	T→T1	A→A1	B→B1
C05MSV-PA	4	4	1	1	2	-
C05MSV-PB	4	4	1	1	-	2
C05MSV-PC	4	4	1	1	3	3

NOTE:

Values obtained with oil viscosity of 170 SUS (36 cSt) at 122°F (50°C).

DIMENSIONS

Dimensions in mm [IN]



SEAL KIT

BUNA SEAL KIT	1013665
VITON SEAL KIT	1013666

Mounting surface with sealing rings: 5 O-Ring type AS568-014 - 90 shore A



1800-OILSOL
1800-645765

<https://oilsolutions.com.au/>

sales@oilsolutions.com.au

ABOUT CONTINENTAL HYDRAULICS

Rugged, durable, high-performance, efficient—the reason Continental Hydraulics' products are used in some of the most challenging applications across the globe. With a commitment to quality customer support and innovative engineering, Continental's pumps, valves, power units, mobile and custom products deliver what the markets demand. Continental has been serving the food production, brick and block, wood products, automotive and machine tool industries since 1962. Learn how our products survive some of the most harsh environments.

SALES@CONTHYD.COM

4895 12th Avenue East, Shakopee, MN 55379 / continentalhydraulics.com / 952-895-6400

CONTINENTAL



HYDRAULICS