

CONTINENTAL



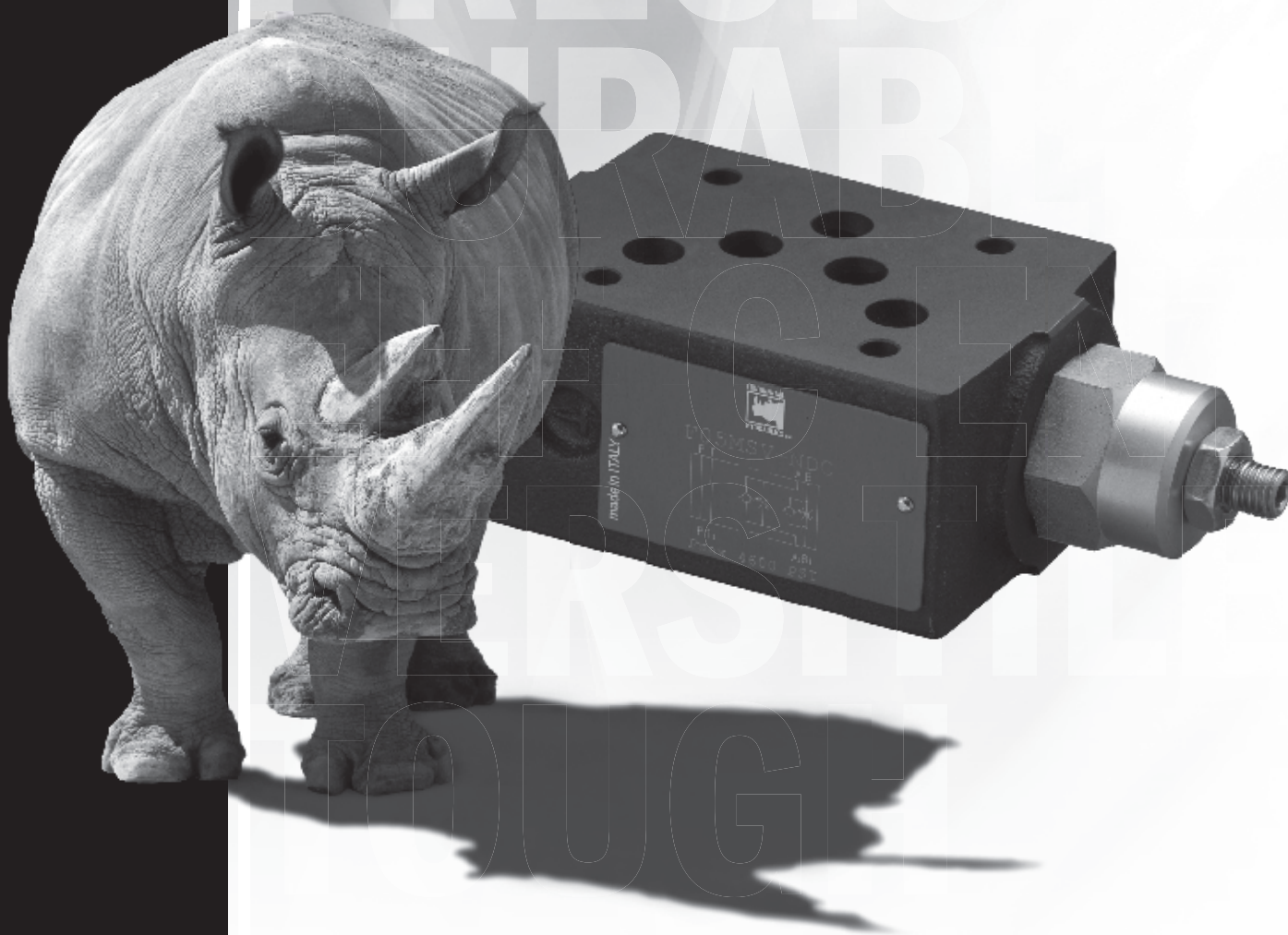
OIL SOLUTIONS

PO Box 38
Strathfieldsaye, VIC, 3551
1800 OIL SOL
1800 645 765
sales@oilsolutions.com.au
www.oilsolutions.com.au
"For All Your Hydraulic Needs"

CONTINENTAL HYDRAULICS

F05MSV-N*

FLOW CONTROL VALVE, NON-COMPENSATED WITH CHECK



F05MSV-N* - FLOW CONTROL VALVE, NON-COMPENSATED WITH CHECK

F05MSV-N*

FLOW CONTROL VALVE, NON-COMPENSATED WITH CHECK



DESCRIPTION

This is a non-compensated flow control valve with a check valve for reverse free flow.

OPERATIONS

This valve increases its orifice value from fully closed to fully open with counter-clockwise rotation.

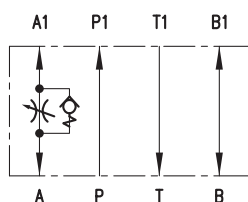
Available with check valve on line A, B or both lines, for meter-in and meter-out.

TYPICAL PERFORMANCE SPECIFICATIONS

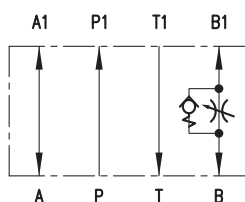
MAXIMUM OPERATING PRESSURE		5000 psi	350 bar
CRACKING PRESSURE		7 psi	0.5 bar
MAXIMUM FLOW RATE		32 gpm	120 l/min
MOUNTING SURFACE		NFPA D05 ISO 4401-05-04-0-05	
WEIGHT	With One Cartridge	5.1 lbs	2.3 kg
	With Two Cartridges	5.5 lbs	2.5 kg

AVAILABLE VERSIONS

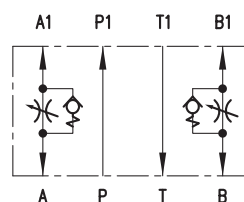
F05MSV-NOA



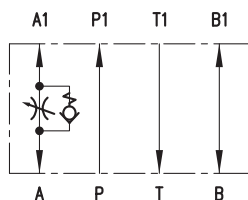
F05MSV-NOB



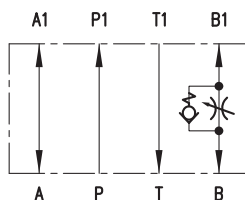
F05MSV-NOC



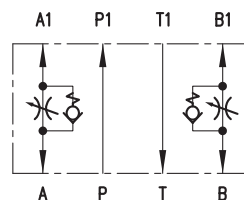
F05MSV-NIA



F05MSV-NIB



F05MSV-NIC



IDENTIFICATION CODE

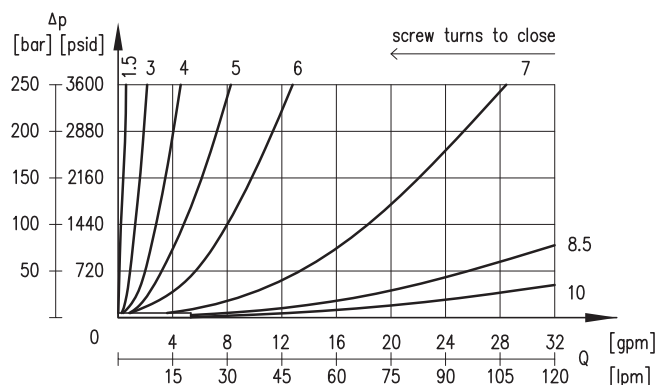
F05MSV-N - **C** - _____ DESIGN LETTER

METER IN/METER OUT		CONTROL PORT		SEAL		BODY MATERIAL		MECHANICAL	
I	In	A	Port A	A	Buna (STD)	C	Cast Iron	OMIT	Adjustment Screw (STD)
O	Out	B	Port B	G	Viton			K	Adjustment Knob
		C	Port A and B						

TYPICAL ORDERING CODE:
F05MSV-NIA-AC-F

PERFORMANCE CURVES

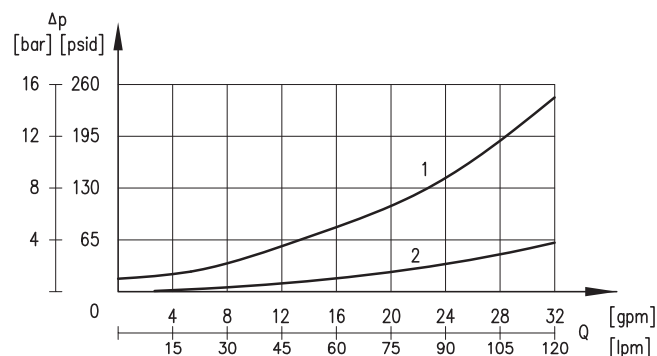
FLOW ADJUSTMENT



NOTES:

- Controlled flow as a function of pressure drop with different restrictor opening values.
- Values obtained with oil viscosity of 170 SUS (36 cSt) at 122°F (50°C).

PRESSURE DROPS Δp - Q



NOTES:

- Pressure drops through the check valve with restrictor all closed.
- Pressure drops through the free ports.



1800-OILSOL
1800-645765

<https://oilsolutions.com.au/>

sales@oilsolutions.com.au

Dimensions in mm [IN]



sales@oilsolutions.com.au

APPLICATION DATA

FLUIDS

All pressure drops shown on these data pages are based on 170 SUS fluid viscosity and 0.87 specific gravity. For any other specific gravity (G1) the pressure drop (ΔP) will be approx. $\Delta P1 = \Delta P (G1/G)$. See the chart for other viscosities.

FLUID VISCOSITIES	Cst	10	14.5	32	36	43	54	65	76	86	108	216	324	400
	SUS	60	75	150	170	200	250	300	350	400	500	1000	1500	1900
MULTIPLIER		0.77	0.81	0.97	1.00	1.04	1.10	1.15	1.20	1.24	1.31	1.56	1.72	1.83

Use mineral oil-based hydraulic fluids HL or HM type, according to ISO 6743-4. For these fluids, use NBR seals. For fluids HFDR type (phosphate esters) use FPM seals (code G). For the use of other kinds of fluid such as HFA, HFB, HFC, please consult our technical department.

Using fluids at temperatures higher than 180 °F causes the accelerated degradation of seals as well as degradation of the fluids physical and chemical properties.

From a safety standpoint, temperatures above 130 degrees F are not recommended.

SEAL KIT

BUNA SEAL KIT	1013665
VITON SEAL KIT	1013666



1800-OILSOL
1800-645765

<https://oilsolutions.com.au/>

sales@oilsolutions.com.au



1800-OILSOL
1800-645765

<https://oilsolutions.com.au/>

sales@oilsolutions.com.au

ABOUT CONTINENTAL HYDRAULICS

Rugged, durable, high-performance, efficient—the reason Continental Hydraulics' products are used in some of the most challenging applications across the globe. With a commitment to quality customer support and innovative engineering, Continental's pumps, valves, power units, mobile and custom products deliver what the markets demand. Continental has been serving the food production, brick and block, wood products, automotive and machine tool industries since 1962. Learn how our products survive some of the most harsh environments.

SALES@CONTHYD.COM

4895 12th Avenue East, Shakopee, MN 55379 / continentalhydraulics.com / 952-895-6400

CONTINENTAL



HYDRAULICS