



OIL SOLUTIONS

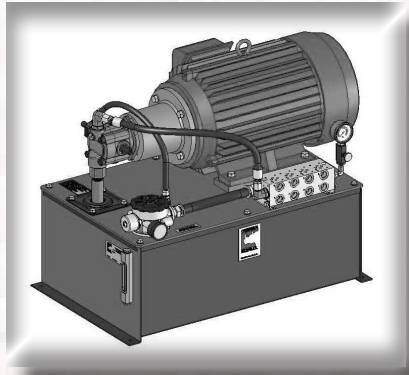
PO Box 38  
Strathfieldsaye, VIC, 3551  
1800 OIL SOL  
1800 645 765

[sales@oilsolutions.com.au](mailto:sales@oilsolutions.com.au)

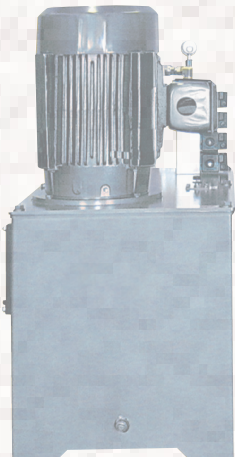
[www.oilsolutions.com.au](http://www.oilsolutions.com.au)

"For All Your Hydraulic Needs"

CONTINENTAL  
  
HYDRAULICS.



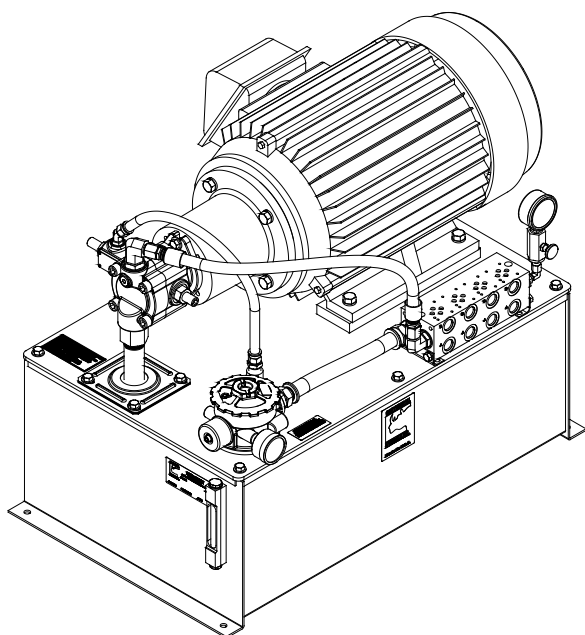
# Catalog Low Profile Hydraulic Power Units



# Low Profile Power Units

## 10 TO 30 GALLON CAPACITY

### General Specifications/Table of Contents



Low Profile Power Units are designed for use in locations where space is at a premium, or where the power of a NFPA/JIC-Style unit is needed in a smaller, less expensive package. They're ideal for industrial applications requiring moderate fluid volume and flow rate.

Typical applications include use with:

- Test Benches
- Machine Tools and Packaging Equipment
- Clamping Equipment
- Drilling Equipment

Low Profile Power Units are the perfect choice for demanding industrial applications where heat buildup is unlikely, and compact installation is a must.

GENERAL SPECIFICATIONS	W10	W20	W30
Reservoir Capacity	10 Gal. (37.8 liters)	20 Gal.(75.7 liters)	30 Gal.(112.7 liters)
Surface Area For Heat Transfer	4.96 sq. ft. (4607.8 cm <sup>2</sup> )	7.64 sq. ft. (7097.6 cm <sup>2</sup> )	9.58 sq. ft. (8899.8 cm <sup>2</sup> )
Heat Dissipation At $\Delta T$	Sq. Ft. of Vertical Steel x $\Delta T$ / 1000		
Basic Weight (Less Oil, Pump, and Motor)	129 lbs. (58.5 kg)	183 lbs. (83. 0 kg)	243 lbs. (110.2 kg)
Usable Gallons	5.46 Gal. (20.7 liters)	7.62 Gal. (28.8 liters)	11.1 Gal. (42.0 liters)
Gallons Per Inch Rise	1.77 Gal.	2.47 Gal.	3.60 Gal.
Capacity, Full to Top Plate	14.07 Gal. (53.3 liters)	27.22 Gal. (103.0 liters)	39.55 Gal. (149.7 liters)
<b>Pump Data (See Continental Hydraulics VANE PUMP CATALOG for complete codes and specifications.)</b>			
Flow Range	Up to 11 gpm (41.6 lpm)	Up to 11 gpm (41.6 lpm)	Up to 11 gpm (41.6 lpm)
Pressure Range	Up to 3000 psi (207 bar)	Up to 3000 psi (207 bar)	Up to 3000 psi (207 bar)
Power Range	Up to 10 HP (7.5 kW)	Up to 10 HP (7.5 kW)	Up to 10 HP (7.5 kW)

### Table of Contents

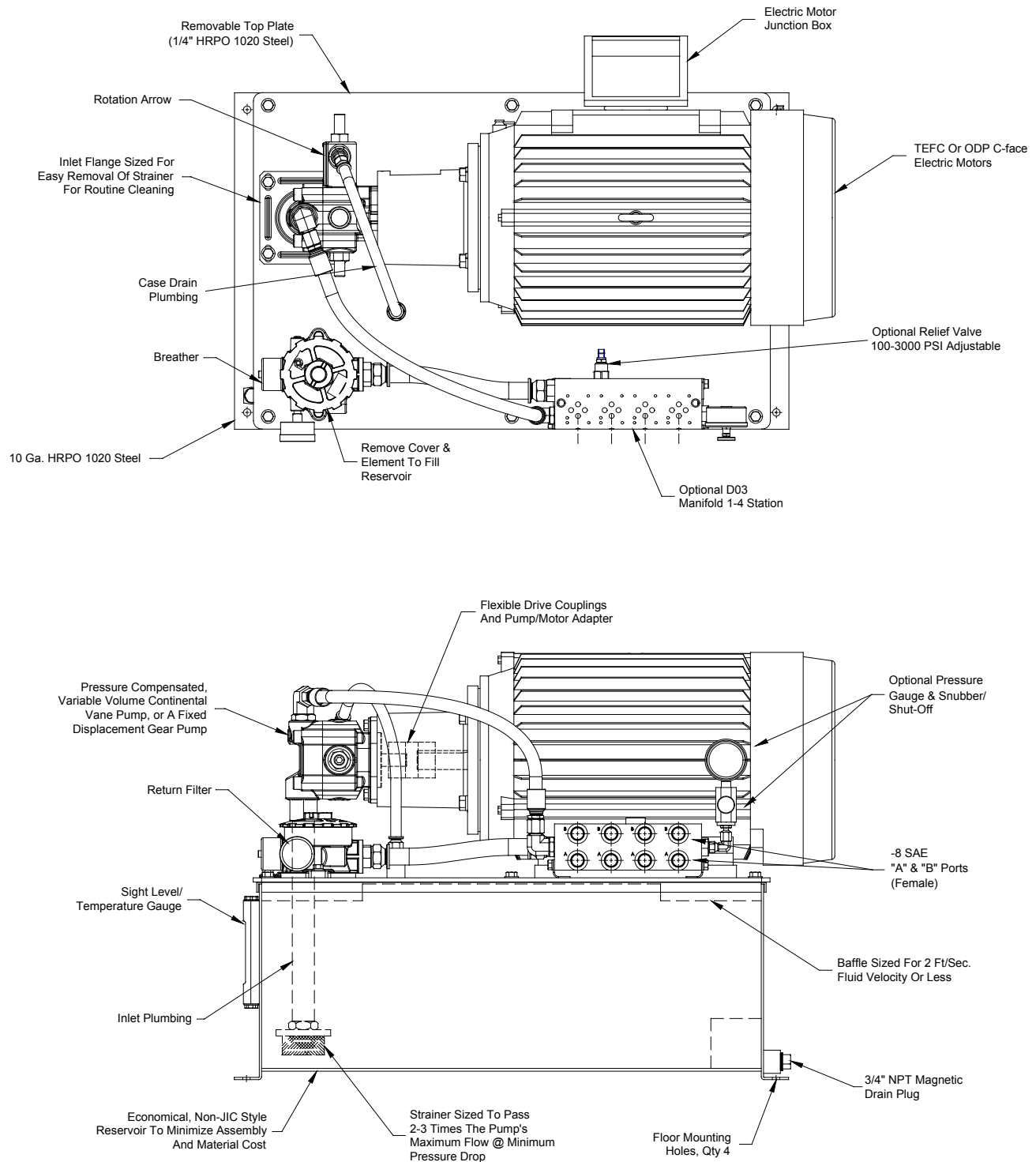
General Specifications .....	2
Features .....	3
Dimension Drawing - Power Unit with Gear Pump .....	4
Dimension Drawing - Power Unit with Vane Pump .....	5
Basic Schematics .....	6
Ordering Information .....	7



# Low Profile Power Units

## 10 TO 30 GALLON CAPACITY

### Features



# Low Profile Power Units

10 TO 30 GALLON CAPACITY

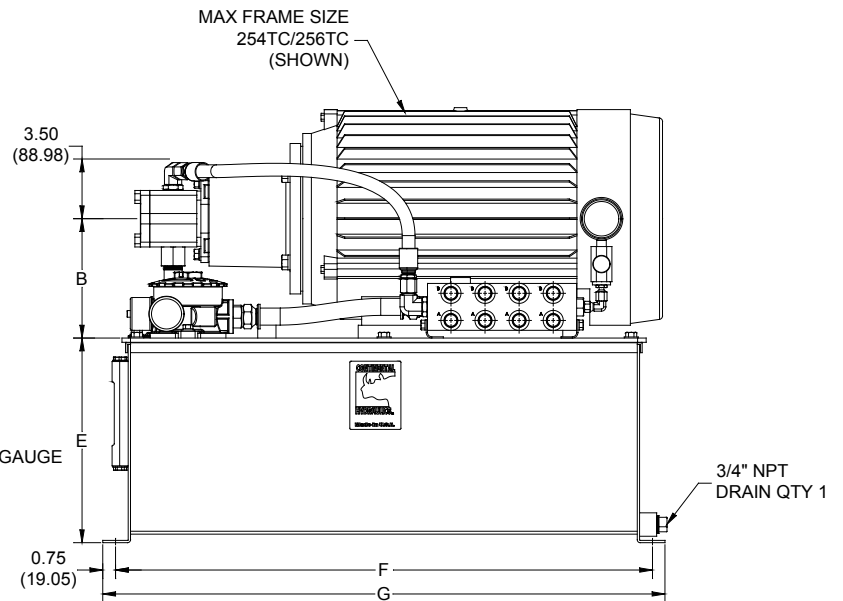
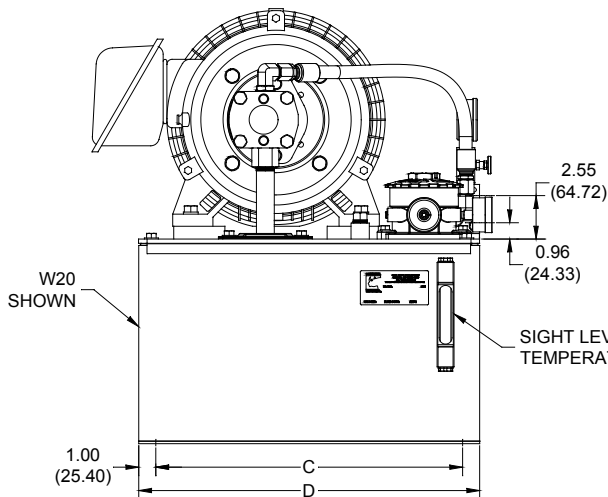
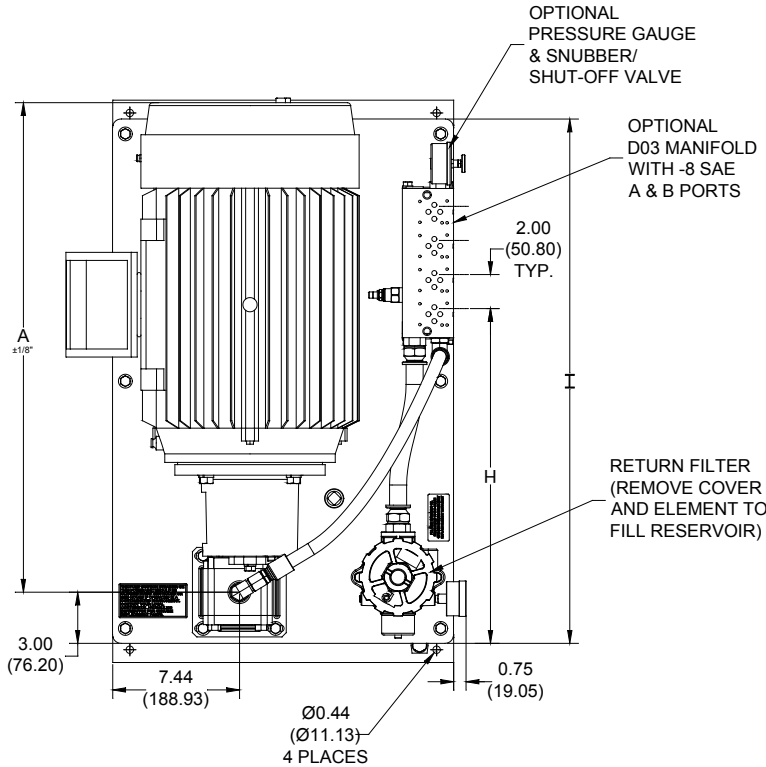
Dimension Drawing - Power Unit With Gear Pump & Manifold



Dimensions shown in: Inches (± .125)  
millimeters (± 1 mm)

## Dimensions A and B

Motor Frame	H.P.	A (±.125)	B
143TC	1	16.38 (416.1)	4.75 (120.6)
145TC	1.5	16.38 (416.1)	4.75 (120.6)
145TC	2	16.38 (416.1)	4.75 (120.6)
182TC	3	19.25 (463.5)	5.75 (146.0)
184TC	5	19.25 (488.9)	5.75 (146.0)
213TC	7.5	21.38 (543.1)	6.50 (165.1)
215TC	10	22.86 (580.6)	6.50 (165.1)
254TC	15	26.50 (673.1)	7.00 (177.8)
256TC	20	28.25 (717.6)	7.00 (177.8)



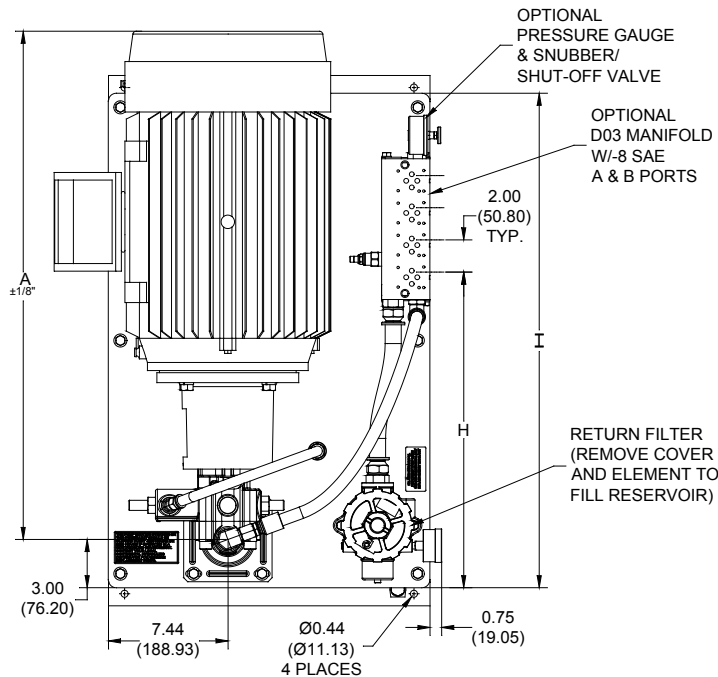
## Dimensions C through I

Reservoir	C	D	E	F	G	H	I
W10	16.00 (406.4)	18.00 (457.2)	9.00 (228.6)	25.50 (647.7)	27.00 (685.8)	16.38 (416.6)	24.25 (615.9)
W20	18.00 (457.2)	20.00 (508.0)	12.00 (304.8)	31.50 (800.1)	33.00 (838.2)	19.63 (492.3)	31.25 (793.7)
W30	22.00 (558.8)	24.00 (609.6)	12.00 (304.8)	37.50 (952.5)	39.00 (990.6)	22.50 (571.5)	36.50 (927.1)

# Low Profile Power Units

## 10 TO 30 GALLON CAPACITY

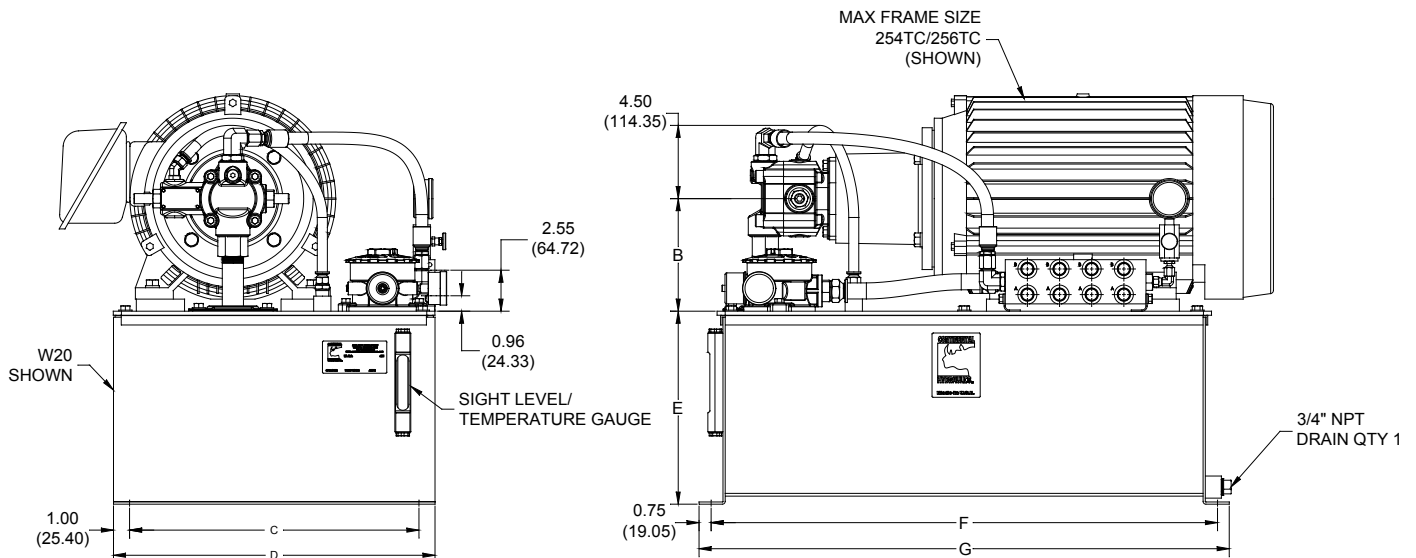
### Dimension Drawing - Power Unit With Vane Pump & Manifold



Dimensions shown in: Inches (± .125)  
millimeters (± 1 mm)

#### Dimensions A and B

Motor Frame	H.P.	A (±.125)	B
143TC	1	19.94 (506.5)	4.75 (120.6)
145TC	1.5	19.94 (506.5)	4.75 (120.6)
145TC	2	19.94 (506.5)	4.75 (120.6)
182TC	3	21.06 (534.9)	5.75 (146.0)
184TC	5	22.06 (560.3)	5.75 (146.0)
213TC	7.5	24.25 (615.9)	6.50 (165.1)
215TC	10	25.68 (652.3)	6.50 (165.1)
254TC	15	29.68 (753.9)	7.00 (177.8)
256TC	20	31.38 (797.1)	7.00 (177.8)



#### Dimensions C through I

Reservoir	C	D	E	F	G	H	I
W10	16.00 (406.4)	18.00 (457.2)	9.00 (228.6)	25.50 (647.7)	27.00 (685.8)	16.38 (416.6)	24.25 (615.9)
W20	18.00 (457.2)	20.00 (508.0)	12.00 (304.8)	31.50 (800.1)	33.00 (838.2)	19.63 (492.3)	31.25 (793.7)
W30	22.00 (558.8)	24.00 (609.6)	12.00 (304.8)	37.50 (952.5)	39.00 (990.6)	22.50 (571.5)	36.50 (927.1)

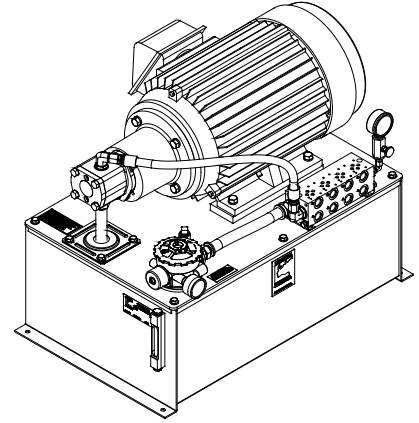
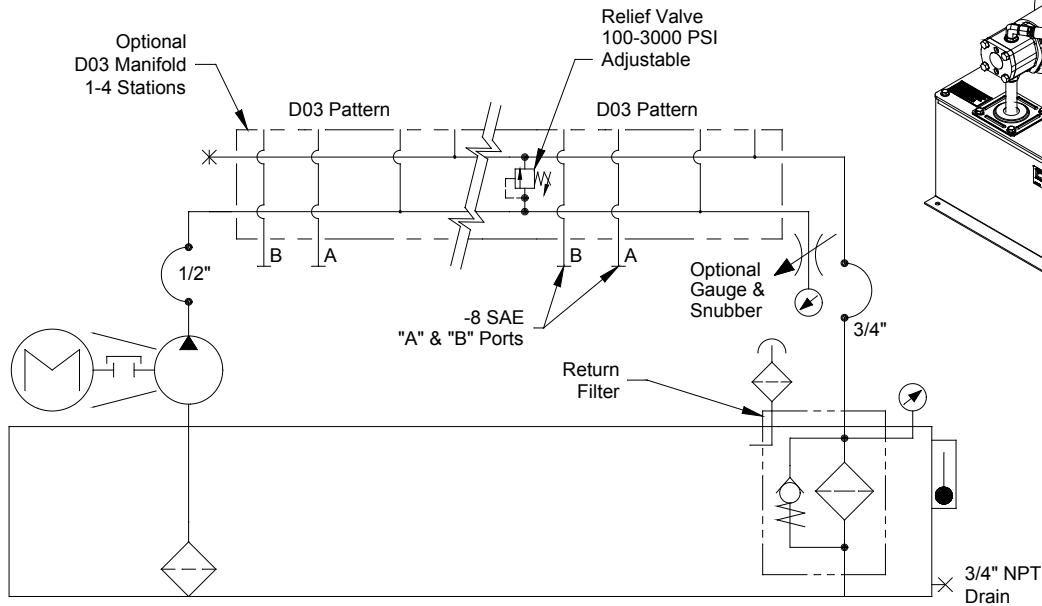


# Low Profile Power Units

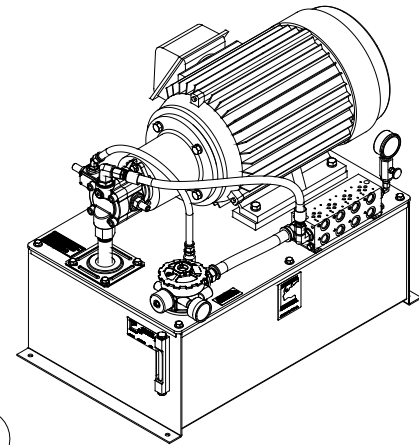
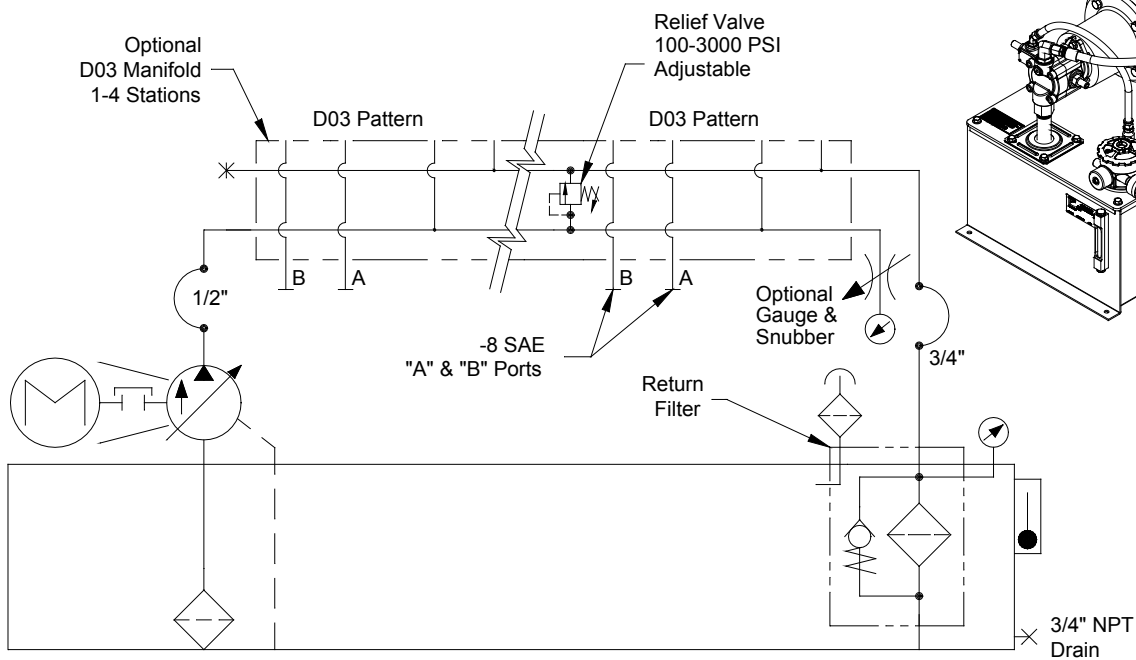
## 10 TO 30 GALLON CAPACITY

### Basic Schematics

#### With Gear Pump



#### With Vane Pump



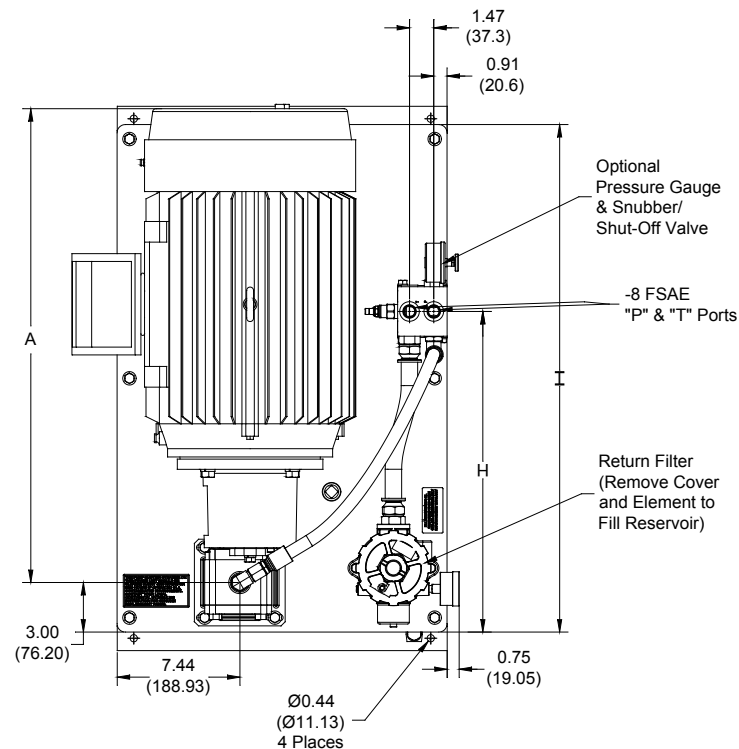


# Low Profile Power Units

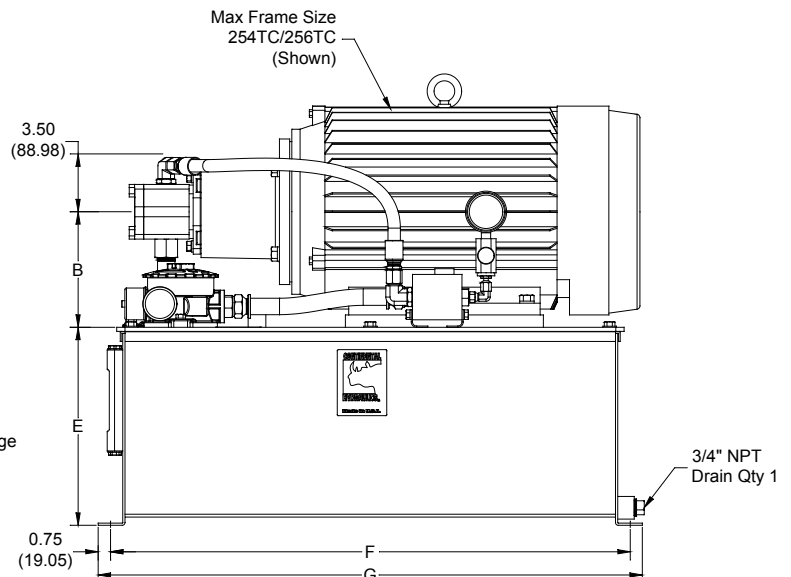
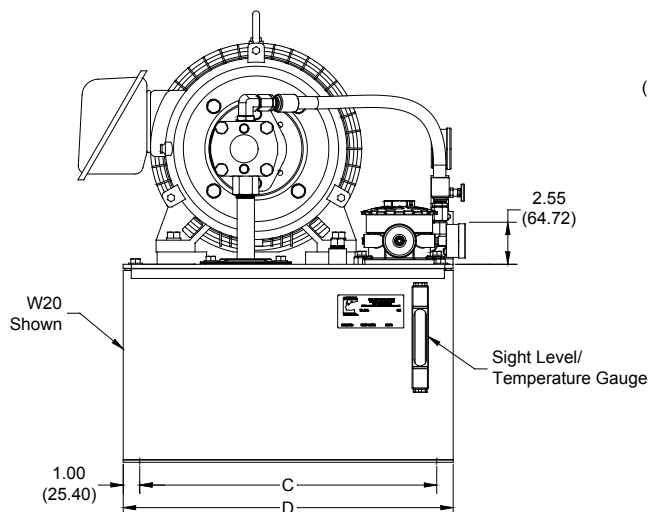
## 10 TO 30 GALLON CAPACITY

### Dimension Drawing - Power Unit With Gear Pump & "PR" Block

Dimensions shown in: Inches (± .125)  
millimeters (± 1 mm)



Motor Frame	H.P.	A (±.125)	B
143TC	1	16.38 (416.1)	4.75 (120.6)
145TC	1.5	16.38 (416.1)	4.75 (120.6)
145TC	2	16.38 (416.1)	4.75 (120.6)
182TC	3	19.25 (463.5)	5.75 (146.0)
184TC	5	19.25 (488.9)	5.75 (146.0)
213TC	7.5	21.38 (543.1)	6.50 (165.1)
215TC	10	22.86 (580.6)	6.50 (165.1)
254TC	15	26.50 (673.1)	7.00 (177.8)
256TC	20	28.25 (717.6)	7.00 (177.8)



### Dimensions C through I

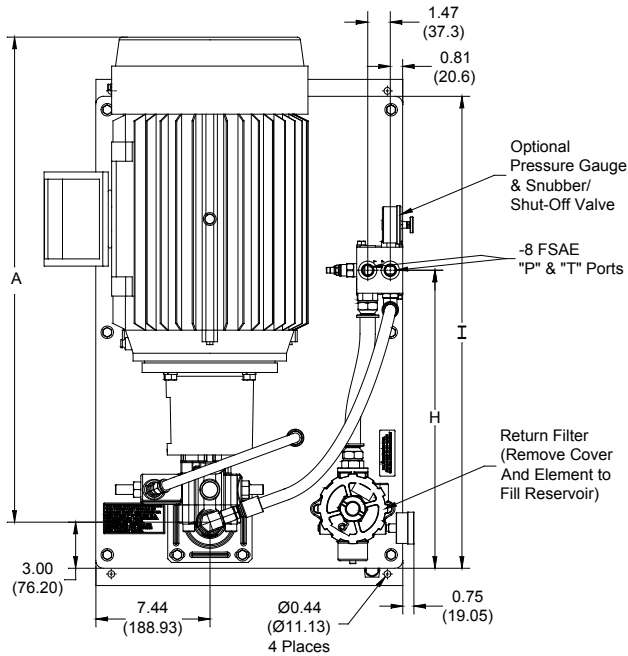
Reservoir	C	D	E	F	G	H	I
W10	16.00 (406.4)	18.00 (457.2)	9.00 (228.6)	25.50 (647.7)	27.00 (685.8)	16.38 (416.6)	24.25 (615.9)
W20	18.00 (457.2)	20.00 (508.0)	12.00 (304.8)	31.50 (800.1)	33.00 (838.2)	19.63 (492.3)	31.25 (793.7)
W30	22.00 (558.8)	24.00 (609.6)	12.00 (304.8)	37.50 (952.5)	39.00 (990.6)	22.50 (571.5)	36.50 (927.1)

# Low Profile Power Units

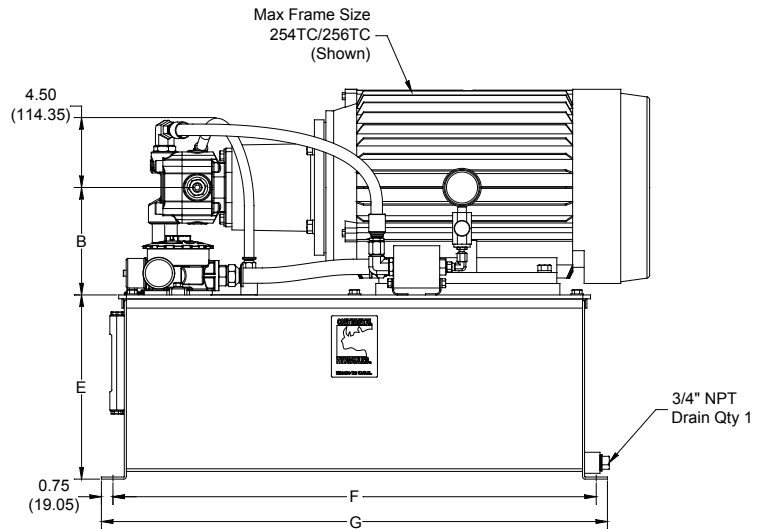
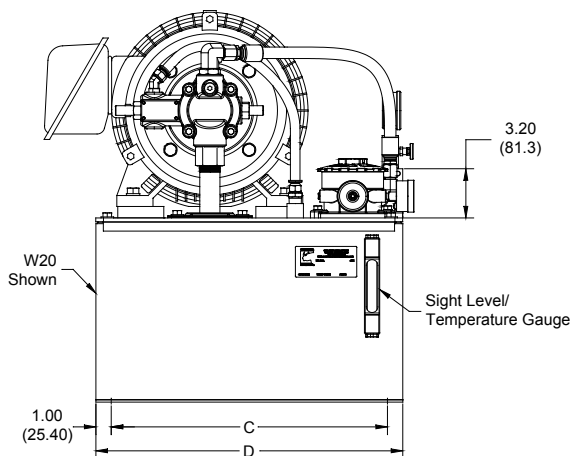
10 TO 30 GALLON CAPACITY

Dimension Drawing - Power Unit With Vane Pump & "PR" Block

Dimensions shown in: Inches (± .125)  
(millimeters (± 1 mm))



Motor Frame	H.P.	A (±.125)	B
143TC	1	19.94 (506.5)	4.75 (120.6)
145TC	1.5	19.94 (506.5)	4.75 (120.6)
145TC	2	19.94 (506.5)	4.75 (120.6)
182TC	3	21.06 (534.9)	5.75 (146.0)
184TC	5	22.06 (560.3)	5.75 (146.0)
213TC	7.5	24.25 (615.9)	6.50 (165.1)
215TC	10	25.68 (652.3)	6.50 (165.1)
254TC	15	29.68 (753.9)	7.00 (177.8)
256TC	20	31.38 (797.1)	7.00 (177.8)



## Dimensions C through I

Reservoir	C	D	E	F	G	H	I
W10	16.00 (406.4)	18.00 (457.2)	9.00 (228.6)	25.50 (647.7)	27.00 (685.8)	16.38 (416.6)	24.25 (615.9)
W20	18.00 (457.2)	20.00 (508.0)	12.00 (304.8)	31.50 (800.1)	33.00 (838.2)	19.63 (492.3)	31.25 (793.7)
W30	22.00 (558.8)	24.00 (609.6)	12.00 (304.8)	37.50 (952.5)	39.00 (990.6)	22.50 (571.5)	36.50 (927.1)



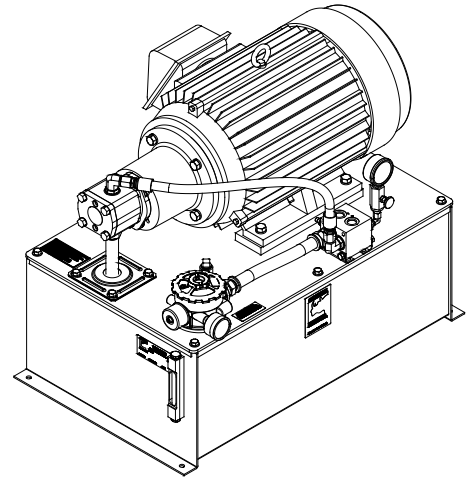
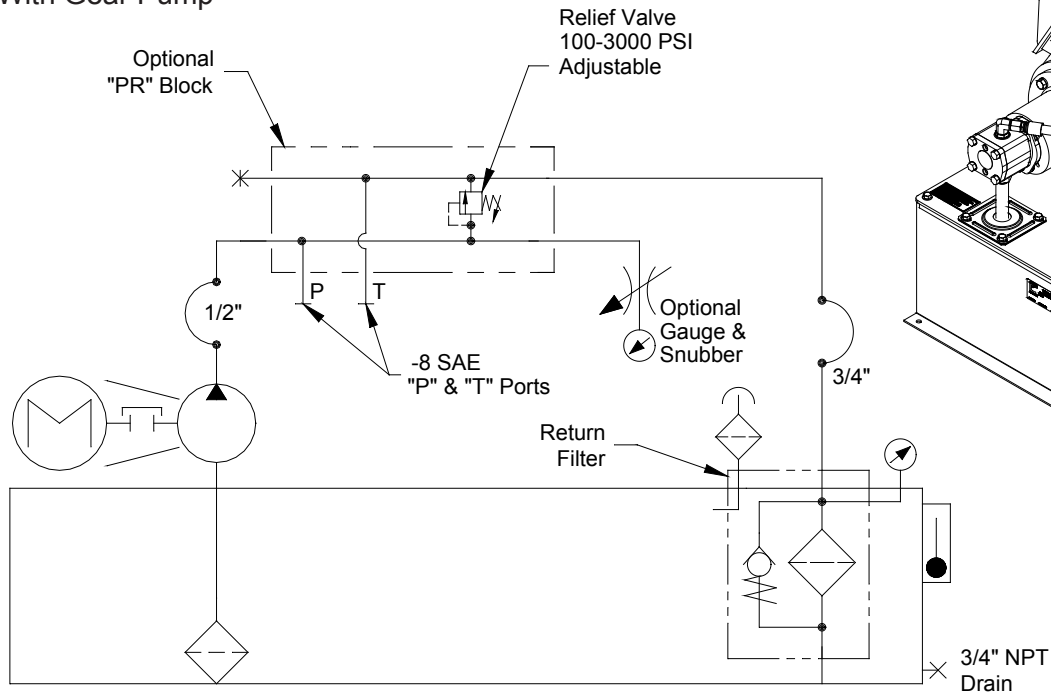


# Low Profile Power Units

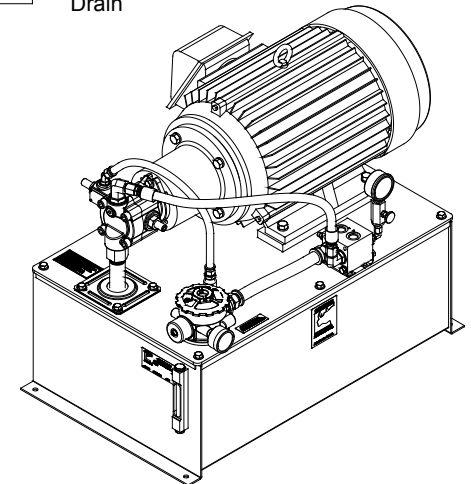
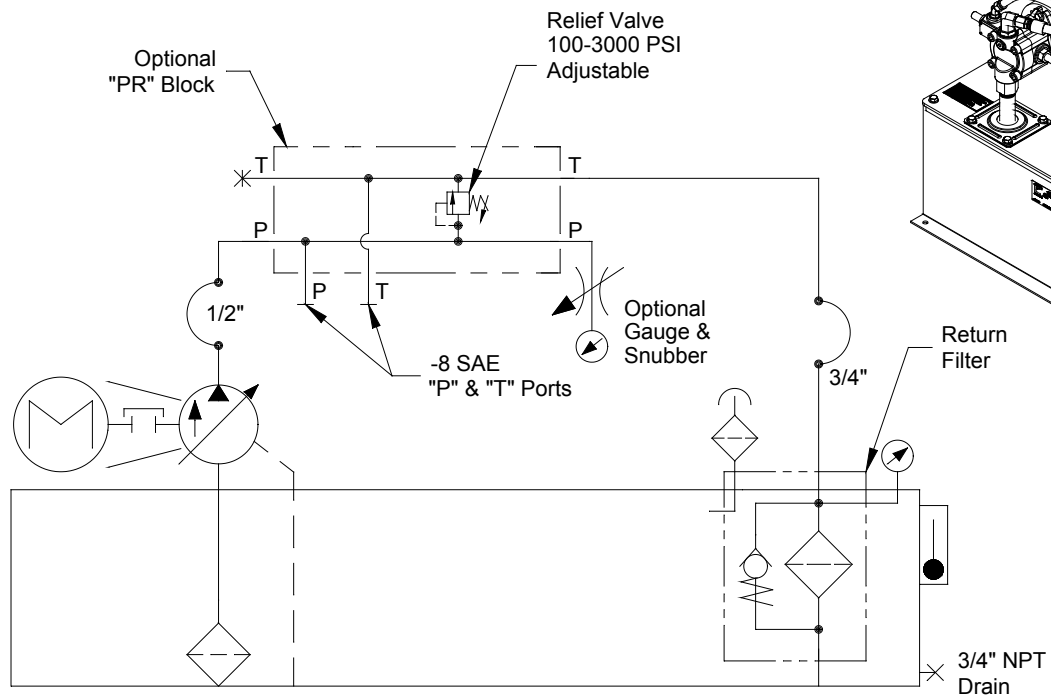
## 10 TO 30 GALLON CAPACITY

### Basic Schematics

#### With Gear Pump



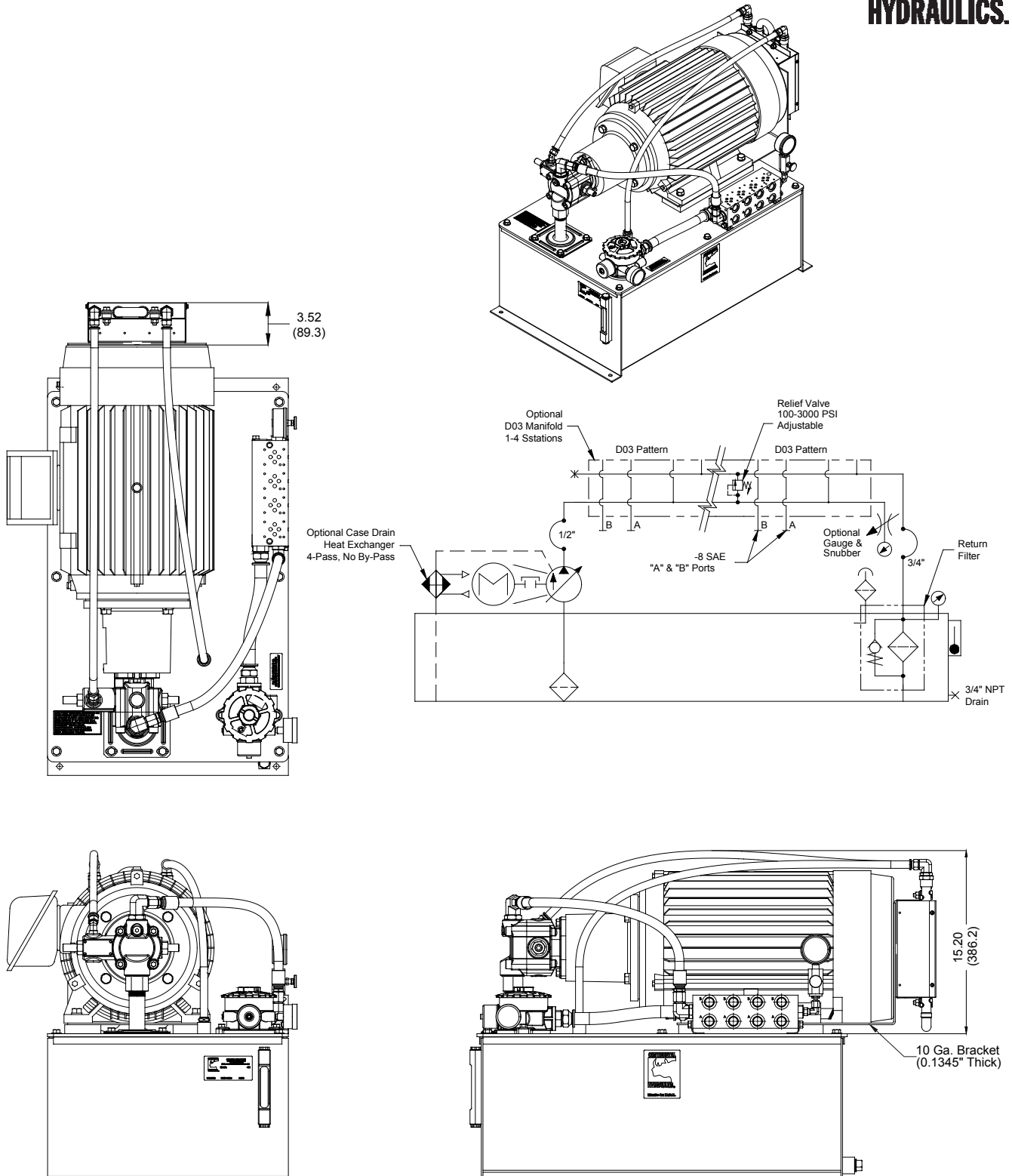
#### With Vane Pump



# Low Profile Power Units

10 TO 30 GALLON CAPACITY

Dimension Drawing - Power Unit With Vane Pump & HEA44C

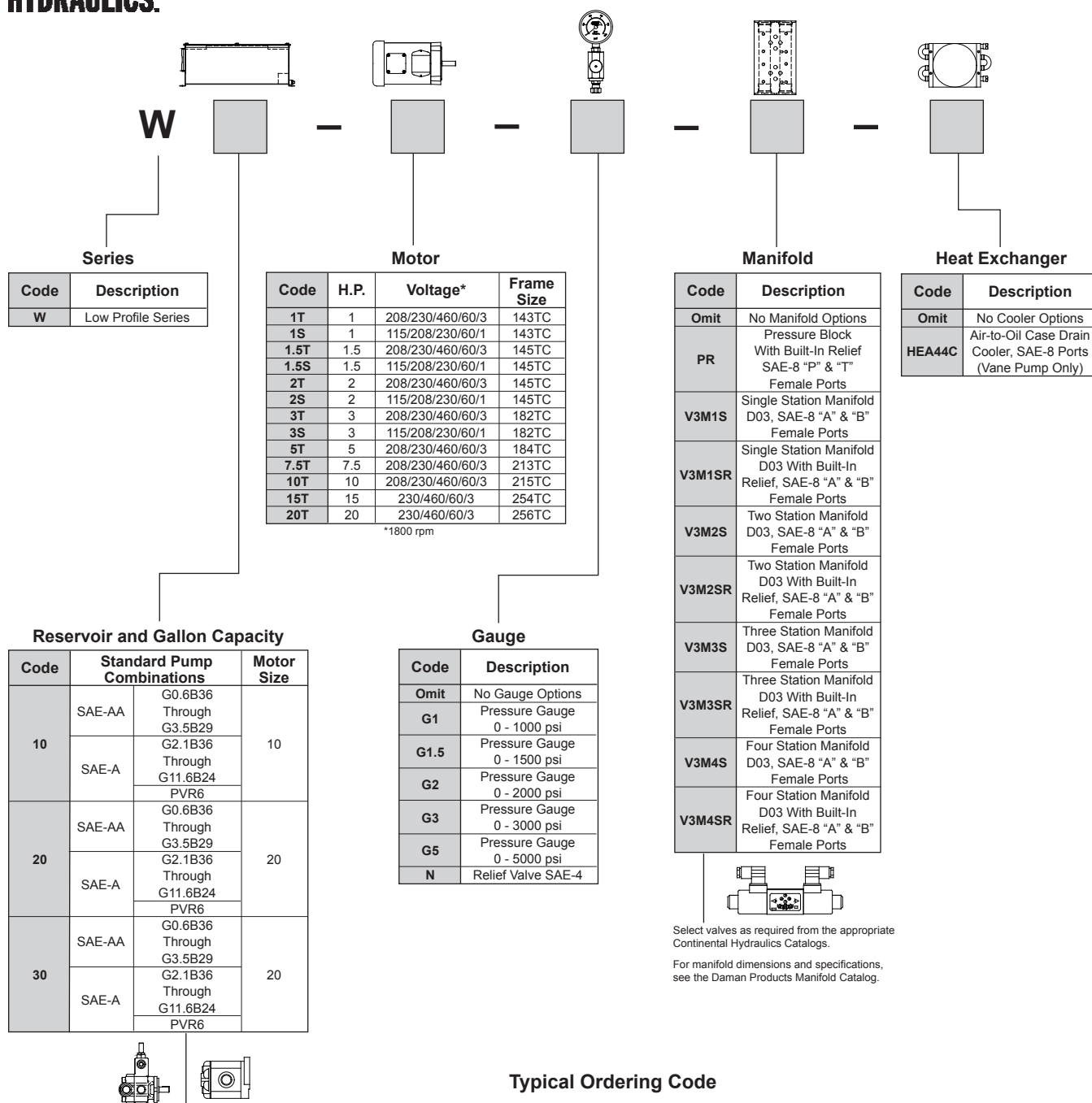




## Low Profile Power Units

### 10 TO 30 GALLON CAPACITY

### Ordering Information



Select vane pump from the Continental Hydraulics Vane Pump Catalog or gear pump from the Power Unit Accessories Catalog.

**NOTE:** Pump and motor ranges listed for each reservoir size are standard combinations. For special combinations, please discuss your application with your Continental Hydraulics distributor or the factory.

### Typical Ordering Code

**W20-3T-G3N-V3M2S-HEA44C** (Power Unit)  
**PVR6-6B20-RF-O-1** (Vane Pump)  
**VSD03M-3A-GB-60L Station 1** (Directional Control Valve)  
**VSD03M-1A-GB-60L Station 2** (Directional Control Valve)  
**BD03-100** (Bolt Kit - Qty. 2)  
-- or --  
**W10-2T-G3N-V3M2SR** (Power Unit)  
**G2.1B36** (Gear Pump)  
**VSD03M-5L-GB-60L Station 1** (Directional Control Valve)  
**BD03-100** (Bolt Kit - Qty. 1)  
**VSD03M-1A-GB-60L Station 2** (Directional Control Valve)  
**F03MSV-NDC-G-AA Station 2** (Flow Control Valve)  
**BD03-250** (Bolt Kit - Qty. 1)



1800-OILSOL  
1800-645765

<https://oilsolutions.com.au/>

[sales@oilsolutions.com.au](mailto:sales@oilsolutions.com.au)



4895 12th Avenue East, Shakopee, MN 55379 / [continentalhydraulics.com](http://continentalhydraulics.com) / 952-895-6400

---

Because Continental Hydraulics is continually improving its products,  
specifications and appearance are subject to change without notice.

Form No. 266289 08/12 © 2014 Continental Hydraulics Printed in U.S.A.