



OIL SOLUTIONS

PO Box 38
Strathfieldsaye, VIC, 3551
1800 OIL SOL
1800 645 765

sales@oilsolutions.com.au

www.oilsolutions.com.au

"For All Your Hydraulic Needs"

CONTINENTAL

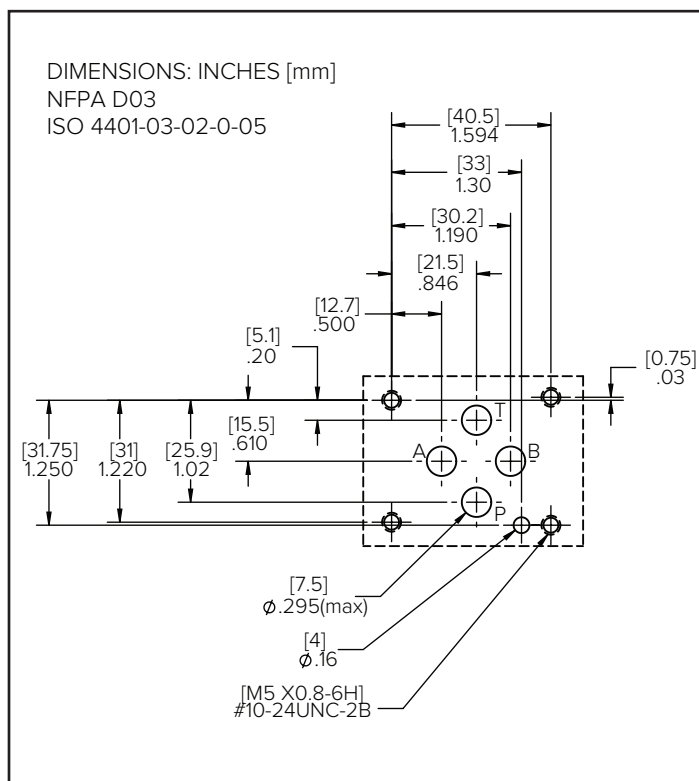
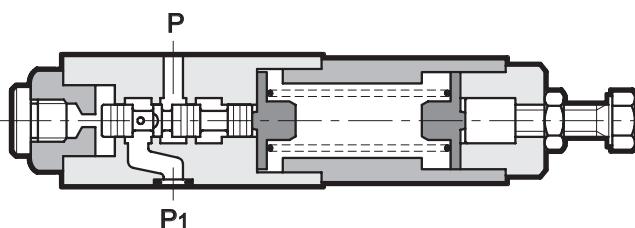


HYDRAULICS

P03MSV-SP

**DIRECT OPERATED
SEQUENCE VALVE**

**MODULAR VERSION
NFPA D03 ISO 4401-03**

MOUNTING INTERFACE**OPERATING PRINCIPLE**

- The P03MSV-SP valve is a direct operated sequence valve of the spool type and is used to control two or more actuators in succession.

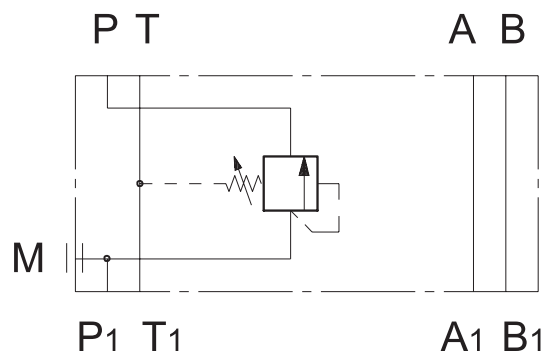
At rest position, it is normally closed and the spool is subject to pressure in line P1 on one side and to the adjustment screw on the other side. When the pressure in line P1 reaches the set value of the screw, the valve opens and allows passage of the fluid in the pressure line of the main circuit.

The valve stays open until the pressure in the circuit drops below the calibrated value set by the spring.

- It is made as a modular version with ports according to NFPA D03/ISO4401-03 standards.
- It is normally supplied with a hexagonal head adjustment screw.
- It can be assembled in a stack with additional modular valves using suitable tie rods or bolts.

PERFORMANCES (measured with mineral oil of viscosity 36cSt at 120°F [50°C])

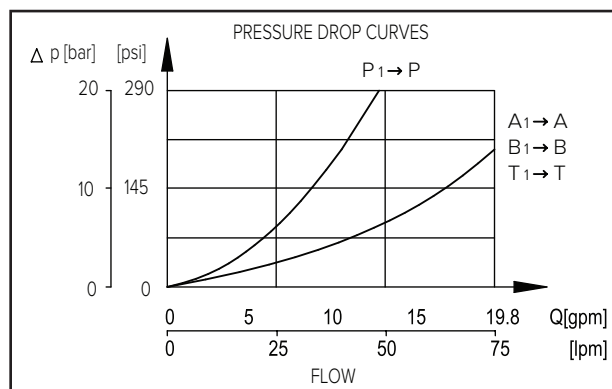
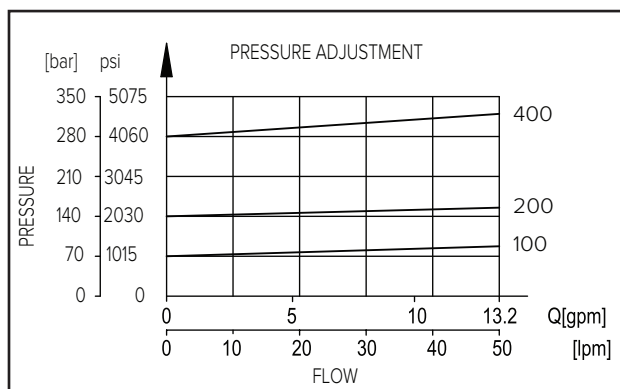
Maximum operating pressure Maximum pressure on port T	PSI [bar]	5000 [350] 145 [10]
Maximum flow rate in the controlled lines Maximum flow rate in the free lines	GPM [l/min]	13 [50] 20 [75]
Ambient temperature range	°F [°C]	-4 to 140 [-20 to +60]
Fluid temperature range	°F [°C]	-4 to 176 [-20 to +80]
Fluid viscosity range	cSt	10 - 400
Fluid contamination degree	According to ISO 4406:1999 class 20/18/15	
Recommended viscosity	cSt	25
Mass:	lbs [kg]	3.1 [1,4]

HYDRAULIC SYMBOLS**P03MSV-SP**

1 • IDENTIFICATION CODE

P03MSV -			S	P	-	-	-	C	-	D
VALVE TYPE PRESSURE CONTROL			PORT		SEAL MATERIAL			DESIGN LETTER		
VALVE SERIES			CODE PORT		CODE DESC.			MATERIAL SELECTION		
CODE NFPA SIZE			P P		A BUNA-N			CODE DESCRIPTION		
03 D03 INTERFACE					G VITON			C CAST IRON		
VALVE FUNCTION			PRESSURE ADJUSTMENT RANGE							
CODE FUNCTION AVAIL WITH PORTS			CODE PSI BAR							
S SEQUENCE P			100 145 to 1000 10 to 70							
			200 435 to 2000 30 to 140							
			400 725 to 4000 50 to 280							
			MECHANICAL							
			CODE DESCRIPTION							
			OMIT STD W/ HEX HEAD ADJ.							

2 • CHARACTERISTIC CURVES (values obtained with viscosity of 36 cSt at 120°F [50°C])



3 • HYDRAULIC FLUIDS

Use mineral oil-based hydraulic fluids HL or HM type, according to ISO 6743-4. For these fluids, use NBR seals (code A). For fluids HFDR type (phosphate esters) use FPM seals (code G). For the use of other kinds of fluid such as HFA, HFB, HFC, please consult our technical department. Using fluids at temperatures higher than 176°F [80°C] causes a faster degradation of the fluid and of the seals characteristics.

The fluid must be preserved in its physical and chemical characteristics.

4 • OVERALL AND MOUNTING DIMENSIONS

