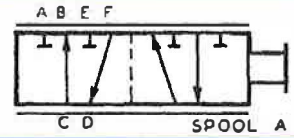




# HYDRAULIC VALVES (DIRECTIONAL CONTROL)

## SELECTOR VALVES SD SERIES Specification Sheet



The CROSS series SD hydraulic selector valves are spool type, manually operated, 6-way, 2-position valves featuring cast-in metering notches for smooth operation. They provide an economical method of diverting flow to two separate hydraulic circuits or providing various types of multiple system operations in combination with other valves.

### GENERAL SPECIFICATIONS

Maximum working pressure.....	5000 * psi (345 bar)
Maximum shock and surge pressure.....	6000 * psi (414 bar)
Maximum flow capacity .....	40 gpm (151 l/m)
Mounting ....	2-bolt, any position
	Shipping weight ... 9 lbs. (4 Kg)
*SAE #12 ports and smaller, 4500 psi for SAE #16 ports, 2500 for NPTF ports.	

### MATERIAL SPECIFICATIONS

Body .....	ductile iron
Spool .....	Ground, plated and polished steel
Seals .....	Buna N

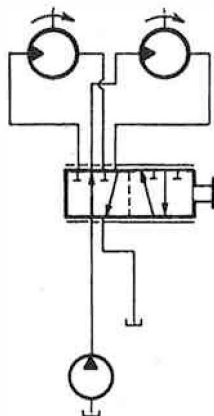
### STANDARD FEATURES (See CROSS Full Line Catalog)

- 1" NPTF or 1 5/16-12, SAE #16 ports
- Standard selector spool
- Handle assembly (at port "C")

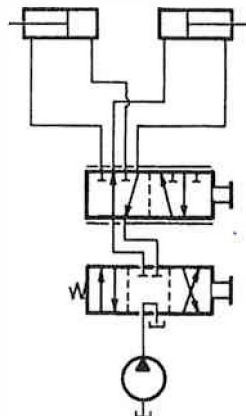
### OPTIONAL FEATURES AVAILABLE

- Various port sizes and type
- Series/parallel spool
- Actuators include spring return, detents, handles, and solenoid operators: (must be externally piloted and drained - see FM VSOS)

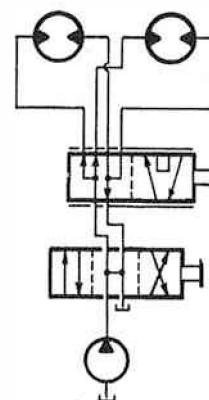
### TYPICAL APPLICATIONS (Simplified circuits)



**CIRCUIT SELECTOR**  
Allows either motor to be driven uni-directionally.



**CIRCUIT SELECTOR**  
Allows either cylinder to be operated by one directional control valve.



**SERIES/PARALLEL**  
Allows selection of either series or parallel motor operation.





OIL SOLUTIONS