



AFD SERIES

Flow Control Valve

Specifications

Operating Range:

0 – 3,000 (207 bar) SAE

0 – 2,500 (172 bar) NPT

Maximum Flow:

8 - 25 GPM (30 - 95 LPM)

Ports:

NPT, SAE side mounted

Mounting:

In-line with 1/4" mounting holes

Weight:

8.5 lbs. (3.8 kg)

Finish:

Black

Part Number:

See chart

Available:

Now

Optional Relief:

1,500 PSI (107 bar)

750 - 3,000 adjustable

**Description****Without Relief****With Relief ***

25 GPM, 3/4" NPTF ports

128770**128776**

16 GPM, 1/2" NPTF ports

128771**128775**

16 GPM SAE #10 ports

128772**128774**

25 GPM SAE #12 ports

128773**128777**

* set @ 1,500 PSI 10 GPM

**Full speed ahead or slow and steady,
Cross keeps flow rate under control.**

Applications

Dependably adjust and maintain a constant flow downstream from the valve with Cross flow control valves. Using the lever and locking knob located on the front of the valve, operators adjust the relative flow to match their workload, not their workload to the valve's capacity. A built-in compensator maintains the flow rate, adjusting for fluctuating pressures downstream. The flow control valve with a built-in relief can further regulate the system pressure by opening at an adjustable pressure setting (field adjustable).



**IN IT FOR THE LONG RUN
SINCE 1949**



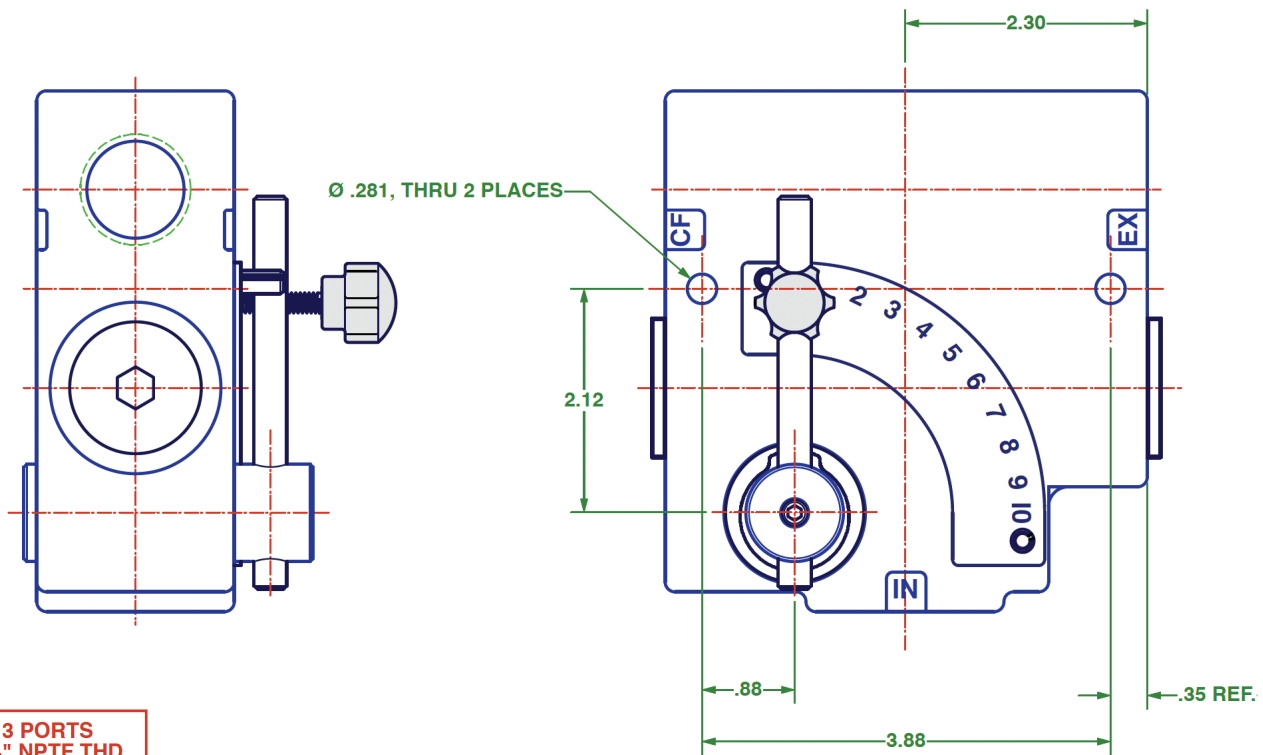
OIL SOLUTIONS

1800-OILSOL
1800-645765

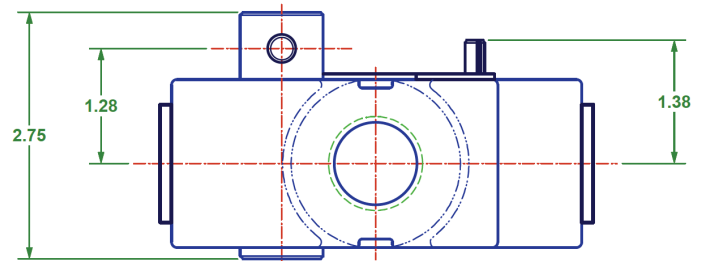
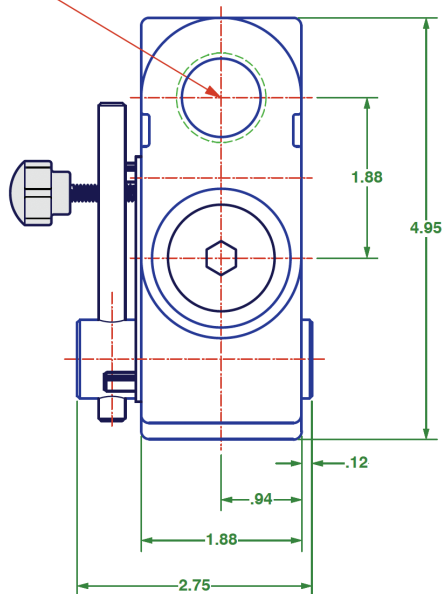
<https://oilsolutions.com.au/>

sales@oilsolutions.com.au

ISO:9001:2015
Certified



3 PORTS
3/4" NPTF THD.



AFD SERIES

Flow Control Valve

AFD 201712