



OIL SOLUTIONS

PO Box 38
Strathfieldsaye, VIC, 3551
1800 OIL SOL
1800 645 765
sales@oilsolutions.com.au
www.oilsolutions.com.au
"For All Your Hydraulic Needs"



Trust it

ACCUMULATORI
A PISTONE

PISTON
ACCUMULATOR

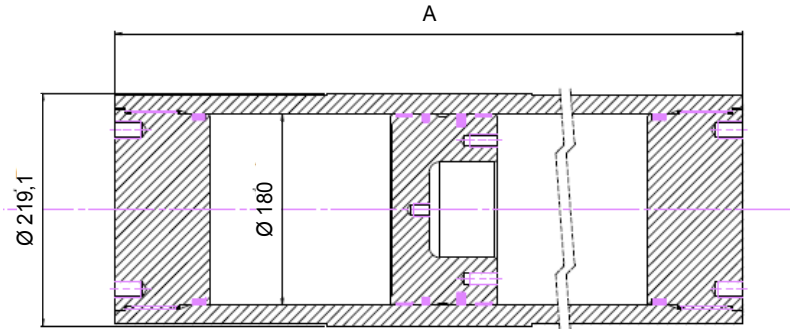


ACCUMULATORI A PISTONE

- Versione Standard (Acciaio)
- In accordo alla CE (2014/68/EU-PED)
Fluid Group 2
- Min. / Max Temperatura
accumulatore ammissibile: -20 / +80 °C
- Codice Kit Guardinizione: KIT-GPACC180NBR

PISTON ACCUMULATOR

- Standard version (Carbon steel)
- According to CE (2014/68/EU-PED)
Fluid Group 2
- Min. / Max. Admissible
accumulator temperature: -20 / +80 °C
- Seal kit Code: KIT-GPACC180NBR



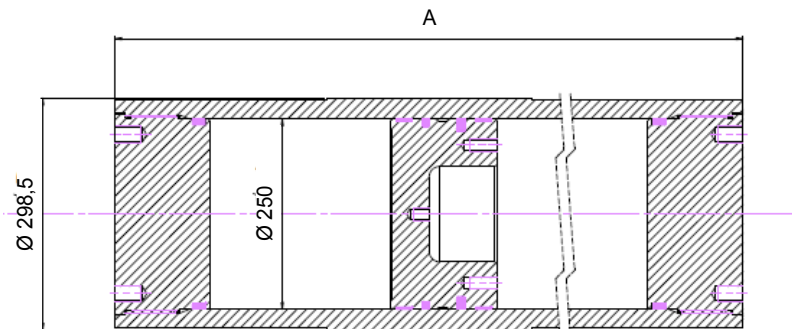
Tipo Type	Volume effettivo Gas Effective Gas volume Litri / Litres	A - Altezza Max A - Max Height mm	Peso Weight Kg.
PEA-C-180-N-008-25C	8	594	96
PEA-C-180-N-010-25C	10	673	103
PEA-C-180-N-015-25C	15	869	121
PEA-C-180-N-020-25C	20	1066	139
PEA-C-180-N-025-25C	25	1262	157
PEA-C-180-N-039-25C	30	1459	175
PEA-C-180-N-035-25C	35	1655	193
PEA-C-180-N-040-25C	40	1852	211
PEA-C-180-N-045-25C	45	2048	230
PEA-C-180-N-050-25C	50	2245	248
PEA-C-180-N-055-25C	55	2441	266
PEA-C-180-N-060-25C	60	2638	284
PEA-C-180-N-065-25C	65	2834	302
PEA-C180-N-070-25C	70	3031	320
PEA-C180-N-075-25C	75	3227	338

ACCUMULATORI A PISTONE

- Versione Standard (Acciaio)
- In accordo alla CE (2014/68/EU-PED)
Fluid Group 2
- Min. / Max Temperatura
accumulatore ammissibile: -20 / +80 °C
- Codice Kit Guardinazione: KIT-GPACC250NBR

PISTON ACCUMULATOR

- Standard version (Carbon steel)
- According to CE (2014/68/EU-PED)
Fluid Group 2
- Min. / Max. Admissible
accumulator temperature: -20 / +80 °C
- Seal kit Code: KIT-GPACC250NBR



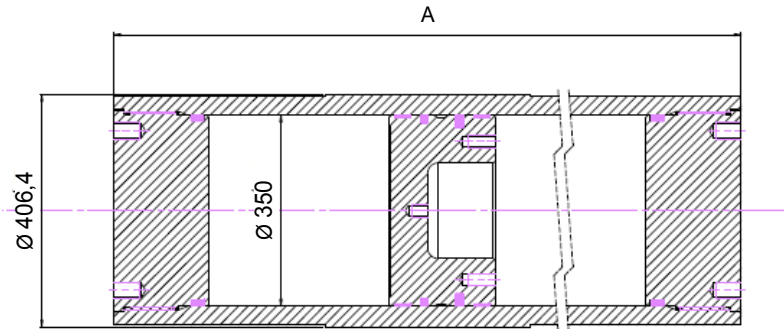
Tipo Type	Volume effettivo Gas Effective Gas volume Litri / Litres	A - Altezza Max A - Max Height mm	Peso Weight Kg.
PEA-C-250-N-020-250	20	757	213
PEA-C-250-N-025-250	25	859	229
PEA-C-250-N-030-250	30	961	245
PEA-C-250-N-035-250	35	1063	261
PEA-C-250-N-040-250	40	1165	277
PEA-C-250-N-045-250	45	1267	293
PEA-C-250-N-050-250	50	1369	309
PEA-C-250-N-055-250	55	1470	325
PEA-C-250-N-060-250	60	1572	341
PEA-C-250-N-065-250	65	1674	357
PEA-C-250-N-070-250	70	1776	373
PEA-C-250-N-075-250	75	1878	389
PEA-C-250-N-080-250	80	1980	405
PEA-C-250-N-085-250	85	2082	421
PEA-C-250-N-090-250	90	2183	437
PEA-C-250-N-095-250	95	2285	453
PEA-C-250-N-100-250	100	2387	469
PEA-C-250-N-105-250	105	2489	485
PEA-C-250-N-110-250	110	2591	501
PEA-C-250-N-115-250	115	2693	517
PEA-C-250-N-120-250	120	2795	533
PEA-C-250-N-125-250	125	2896	549
PEA-C-250-N-130-250	130	2998	565
PEA-C-250-N-135-250	135	3100	581
PEA-C-250-N-140-250	140	3202	597
PEA-C-250-N-145-250	145	3304	613
PEA-C-250-N-150-250	150	3406	629
PEA-C-250-N-155-250	155	3508	645
PEA-C-250-N-160-250	160	3609	661
PEA-C-250-N-165-250	165	3711	677
PEA-C-250-N-170-250	170	3813	693
PEA-C-250-N-175-250	175	3915	709
PEA-C-250-N-180-250	180	4017	725
PEA-C-250-N-185-250	185	4119	741
PEA-C-250-N-190-250	190	4221	757
PEA-C-250-N-195-250	195	4323	773
PEA-C-250-N-200-250	200	4424	789

ACCUMULATORI A PISTONE

- Versione Standard (Acciaio)
- In accordo alla CE (2014/68/EU-PED)
Fluid Group 2
- Min. / Max Temperatura
accumulatore ammissibile: -20 / +80 °C
- Codice Kit Guardinizione: KIT-GPACC350NBR

PISTON ACCUMULATOR

- Standard version (Carbon steel)
- According to CE (2014/68/EU-PED)
Fluid Group 2
- Min. / Max. Admissible
accumulator temperature: -20 / +80 °C
- Seal kit Code: KIT-GPACC350NBR



Tipo Type	Volume effettivo Gas Effective Gas volume	A - Altezza Max A - Max Height	Peso Weight
	Litri / Litres	mm	Kg.
PEA-C-350-N-030-250	30	742	415
PEA-C-350-N-040-250	40	846	441
PEA-C-350-N-050-250	50	950	467
PEA-C-350-N-060-250	60	1054	494
PEA-C-350-N-070-250	70	1158	520
PEA-C-350-N-080-250	80	1262	546
PEA-C-350-N-090-250	90	1365	572
PEA-C-350-N-100-250	100	1469	598
PEA-C-350-N-110-250	110	1573	624
PEA-C-350-N-120-250	120	1677	650
PEA-C-350-N-130-250	130	1781	676
PEA-C-350-N-140-250	140	1885	702
PEA-C-350-N-150-250	150	1989	728
PEA-C-350-N-160-250	160	2093	754
PEA-C-350-N-170-250	170	2197	780
PEA-C-350-N-180-250	180	2301	807
PEA-C-350-N-190-250	190	2405	833
PEA-C-350-N-200-250	200	2509	859
PEA-C-350-N-210-250	210	2613	885
PEA-C-350-N-220-250	220	2717	911
PEA-C-350-N-230-250	230	2821	937
PEA-C-350-N-240-250	240	2925	963
PEA-C-350-N-250-250	250	3028	989
PEA-C-350-N-260-250	260	3132	1015
PEA-C-350-N-270-250	270	3236	1041
PEA-C-350-N-280-250	280	3340	1067
PEA-C-350-N-290-250	290	3444	1093
PEA-C-350-N-300-250	300	3548	1120
PEA-C-350-N-310-250	310	3652	1146
PEA-C-350-N-320-250	320	3756	1172
PEA-C-350-N-330-250	330	3860	1198
PEA-C-350-N-340-250	340	3964	1224
PEA-C-350-N-350-250	350	4068	1250
PEA-C-350-N-360-250	360	4172	1276
PEA-C-350-N-370-250	370	4276	1302
PEA-C-350-N-380-250	380	4380	1328
PEA-C-350-N-390-250	390	4484	1354
PEA-C-350-N-400-250	400	4588	1381