

NEW

WST pro

Advanced Walvoil
Service Tool



CED400W - CANBUS FANDRIVE (1.0) FANDRIVE PARAMETERS CONFIGURATOR

TEMPERATURE 1 INPUT

MAIN PAGE MONITOR **TEMP_1** TEMP_2 TEMP_3 TEMP_4 TEMP_5 TEMP_6 DEBUG

TEMPERATURE INPUT

Temperature Sensor Input Type: CANbus or physical Temperature Sensor

Minimum Cooling Demand Temperature: °C From -40 to 170

Maximum Cooling Demand Temperature: °C From -40 to 170

Weighting Factor: From 0 to 100

CANbus Message ID: From 0x00000000 to 0xFFFFFFFF

CANbus Message ID Complete Flag: TRUE: All the ID is used, FALSE: Only the PGN part of the ID is used

CANbus Message Timeout: msec From 0 to 65 535

Signal Length: byte From 0 to 2

Signal Position in the Message: From 0 to 7

Input Pin: Pin number

SENSOR RESISTANCE VALUE [OHM] VS TEMPERATURE

-40 °C	<input type="text" value="176543.25661432536"/>	70 °C	<input type="text" value="873.913195618957"/>
--------	---	-------	---

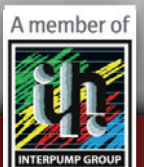
Advanced Service Tool for Walvoil Electronic Components



1800-OILSOL
1800-645765

<https://oilsolutions.com.au/>

sales@oilsolutions.com.au



WST pro

Advanced Walvoil Service Tool

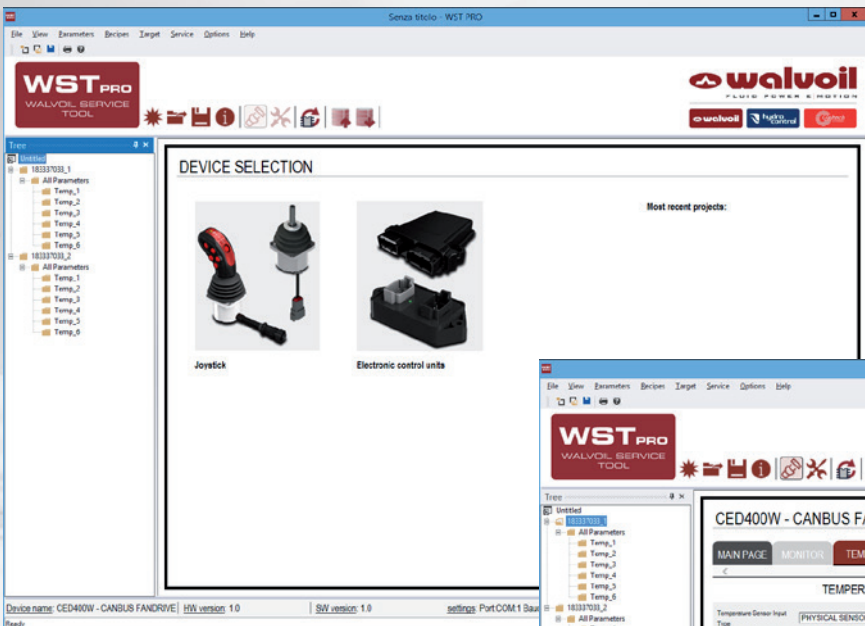


The new WST pro can be connected with all Walvoil electronic components and integrates all the current tools (bootloader, configurator, diagnostics).

New ergonomic and intuitive graphical human machine interface simplifies and improves its usability.

With this tool it is possible to:

- Calibrate and configure the applications
- Monitor I/O signals in Real Time
- Execute in-field system Diagnostic
- Update the Firmware and Software in the field



D1WWCE13E - 1st edition April 2019