



Valvole flangiabili su motori idraulici

Valves for hydraulic motors



VALVOLE PER MOTORI IDRAULICI *VALVES FOR HYDRAULIC MOTORS*

Queste valvole vengono utilizzate per il montaggio diretto su motori idraulici tramite il fissaggio a vite filettata o vite cava.

Proponiamo valvole antishock, anticavitazione, valvole overcenter, valvole regolatrici di flusso, rotodeviatori e selettrici

Flangiature per motori:

- DANFOSS OMP, OMPL, OMR, OMS, OMSS, OMSW.
- SAMHYDRAULIC AG-AR
- PARKER TE-TJ
- CHAR LYNN
- Altre flangiature su richiesta del Cliente.

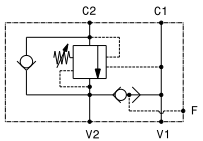
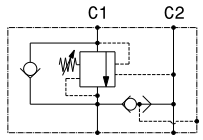
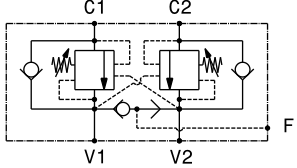
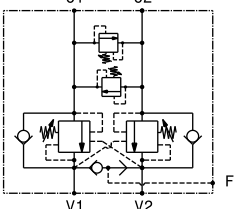
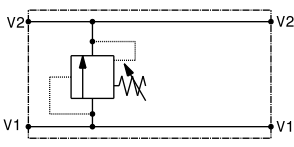
These valves are used for direct mounting into hydraulic motors via the fixing screw or through banjo bolt.

We propose antishock valves, anticavitation valves, overcenter valves, flow control valves, shuttle valves and rotating distributors.

Hydraulic motor's flange:

- DANFOSS OMP, OMPL, OMR, OMS, OMSS, OMSW.
- SAMHYDRAULIC AG-AR
- PARKER TE-TJ
- CHAR LYNN
- Other flange on customer requirements.

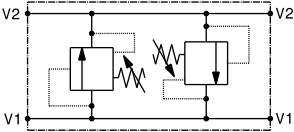
INDICE PER TIPO DI VALVOLA INDEX BY VALVE TYPE

		Modello motore <i>Motor type</i>	Q	P	PAGINA
			(l/min)	(bar)	PAGE
Valvola overcentre semplice effetto con sblocco freno <i>Single effect overcentre valve with brake release</i>					
	OVC-SE-FMD-SF-12	DANFOSS OMP-OMPL-OMR	60	350	431
Valvola overcentre semplice effetto con sblocco freno <i>Single effect overcentre valve with brake release</i>					
	OVC-SE-FMD-SF-121	DANFOSS OMS-OMSW-OMSS	60	350	432
	OVC-SE-FMD-SF-C-12	DANFOSS OMP-OMPL-OMR	60	350	433
	OVC-SE-FMSH-SF-VC-12	SAMHYDRAULIC AG-AR	60	350	434
Valvola overcentre doppio effetto con sblocco freno <i>Double effect overcentre valve with brake release</i>					
	OVC-DE-FMD-SF-12	DANFOSS OMP-OMPL-OMR	60	350	435
	OVC-DE-FMD-SF-121	DANFOSS OMS-OMSW-OMSS	60	350	436
	OVC-DE-FMD-SF-C-12	DANFOSS OMP-OMPL-OMR	60	350	437
	OVC-DE-FMSH-SF-VC-12	SAMHYDRAULIC AG-AR	60	350	438
	OVC-DE-FMCL-SF-VC-12	CHAR-LYNN	60	350	439
	OVC-DE-FMP-SF-VC-12	PARKER TE-TJ	60	350	440
Valvola overcentre doppio effetto, antishock e sblocco freno <i>Antishock, double effect Overcentre valve with brake release</i>					
	OVC-DE-FMD-SF-VLPDI-12	DANFOSS OMP-OMPL-OMR	60	350	441
Valvola antiurto semplice effetto <i>Single effect antishock valve</i>					
	VLP40-S-FMD	DANFOSS OMP-OMPL-OMR	40	300	442
	VLP40-S-FMD1	DANFOSS OMS-OMSW-OMSS	40	300	443
	VLP40-S-FMD-VC	DANFOSS OMP-OMPL-OMR	40	300	444
	VLP40-S-FMD-VC1	DANFOSS OMS-OMSW-OMSS	40	300	445
	VLP40-S-FMSH-VC	SAMHYDRAULIC AG-AR	40	300	446

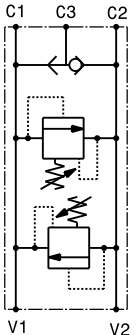
INDICE PER TIPO DI VALVOLA INDEX BY VALVE TYPE

	Modello motore <i>Motor type</i>	Q	P	PAGINA
		(l/min)	(bar)	PAGE

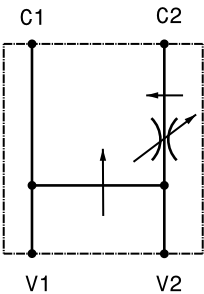
Valvola antiurto doppio effetto *Double effect antishock valve*

	VLP40-D-FMD	DANFOSS OMP-OMPL-OMR	40	300	447
	VLP40-D-FMD1	DANFOSS OMS-OMSW-OMSS	40	300	448
	VLP40-D-FMD-VC	DANFOSS OMP-OMPL-OMR	40	300	449
	VLP40-D-FMD-VC1	DANFOSS OMS-OMSW-OMSS	40	300	450
	VLP40-D-FMSH-VC	SAMHYDRAULIC AG-AR	40	300	451

Valvola antiurto doppio effetto con sblocco freno *Double effect antishock valve with brake release*

	VLP40-D-FMD-SF-VC	DANFOSS OMP-OMPL-OMR	40	300	452
	VLP40-D-FMSH-SF-VC	SAMHYDRAULIC AG-AR	40	300	453

Valvola regolatrice di flusso a tre vie prioritaria *Three ways priority flow regulator*

	RFP50-FMD-VC-12	DANFOSS OMP-OMPL-OMR	40	300	454
	RFP50-FMSH-VC	SAMHYDRAULIC AG-AR	40	300	456

Valvola regolatrice di flusso a tre vie prioritaria *Three ways priority flow regulator*

	RFP50-FMD-VC-121	DANFOSS OMS-OMSW-OMSS	40	300	455
---	------------------	-----------------------	----	-----	------------

INDICE PER TIPO DI VALVOLA INDEX BY VALVE TYPE

	Modello motore <i>Motor type</i>	Q	P	PAGINA
		(l/min)	(bar)	PAGE

Valvola regolatrice di flusso tre vie *Three ways flow regulator valve*

	RFA-FMD	DANFOSS OMP-OMPL-OMR	100	270	457
	RFA-FMD-1	DANFOSS OMS-OMSW-OMSS	100	270	458

Valvola regolatrice di flusso tre vie con valvola limitatrice di pressione *Three ways flow regulator valve with relief valve*

	RFA-VLP10-FMD-12	DANFOSS OMP-OMPL-OMR	100	270	459
--	------------------	----------------------	-----	-----	------------

Rotodeviatore *Rotating Distributor*

	RTD-FMD-VC-12	DANFOSS OMP-OMPL-OMR	60	300	460
	RTD-FMSH-VC-12	SAMHYDRAULIC AG-AR	60	300	464

Rotodeviatore con valvola limitatrice di pressione *Rotating distributor with relief valve*

	RTD-FMD-VC-VLP40-12	DANFOSS OMP-OMPL-OMR	60	300	461
	RTD-FMSH-VC-VLP40-12	SAMHYDRAULIC AG-AR	60	300	465
	RTD-FMD-VLP40-121	DANFOSS OMS-OMSW-OMSS	60	300	463

INDICE PER TIPO DI VALVOLA INDEX BY VALVE TYPE

	Modello motore <i>Motor type</i>	Q	P	PAGINA
		(l/min)	(bar)	PAGE

Rotodeviatore con valvola limitatrice di pressione e strozzatore *Rotating distributor with relief and needle valve*

	RTD-FMD-VC-VLP40-ST-12	DANFOSS OMP-OMPL-OMR	60	300	462
	RTD-FMSH-VC-VLP40-ST-12	SAMHYDRAULIC AG-AR	60	300	466

Valvola selettiva *Shuttle valve*

	VS-FMD-VC	DANFOSS OMP-OMPL-OMR	60	270	467
--	-----------	----------------------	----	-----	------------

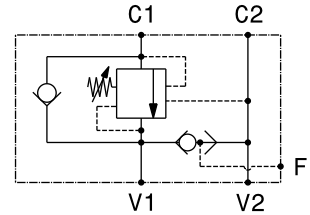
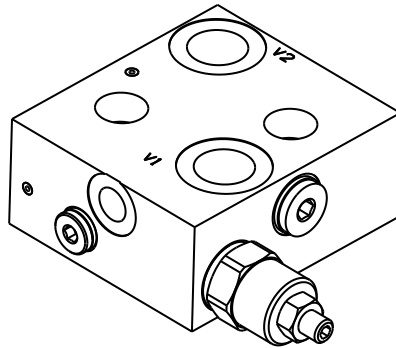
Base per elettrovalvole *Sub-plate for solenoid valves*

	BEC3-FMD-1-12	DANFOSS OMP-OMPL-OMR	40	280	468
--	---------------	----------------------	----	-----	------------

Valvola OVERCENTER semplice effetto con sblocco freno flangiabile su motori DANFOSS-OMS-OMSW-OMSS
 Single effect OVERCENTER valve with brake unclamping, flangeable to DANFOSS OMS-OMSW-OMSS motors

mod. OVC-SE-FMD-SF-121

Corpo in alluminio
 Aluminium body

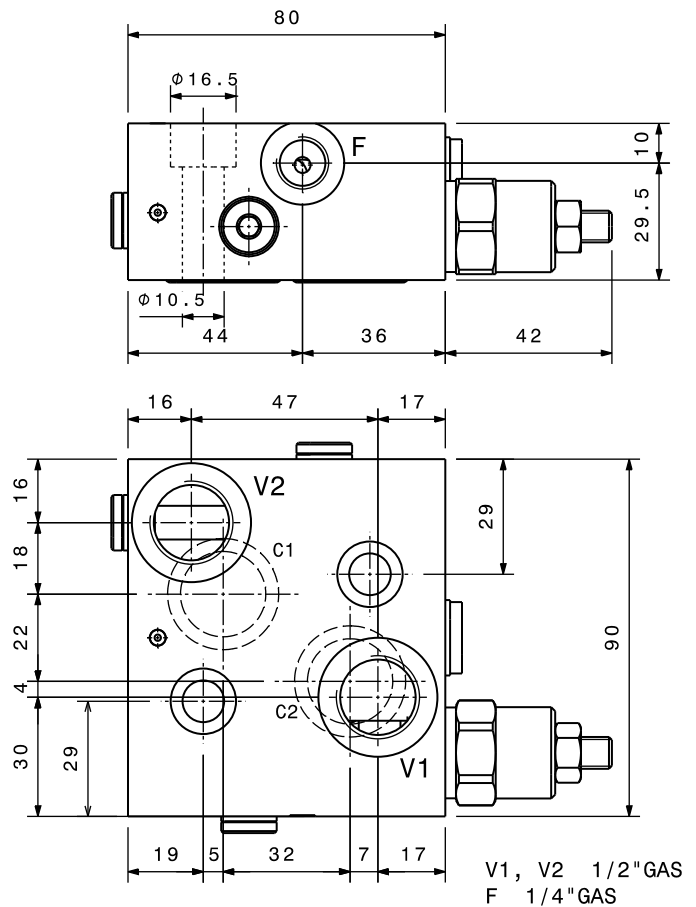


Portata massima Max flow	60 l/min 16 gpm
Pressione massima Max pressure	350 bar 5000 psi
Rapporto di pilotaggio standard Standard pilot ratio	4,25:1
Rapporto di pilotaggio a richiesta Pilot ratio upon request	3:1 8:1 10:1

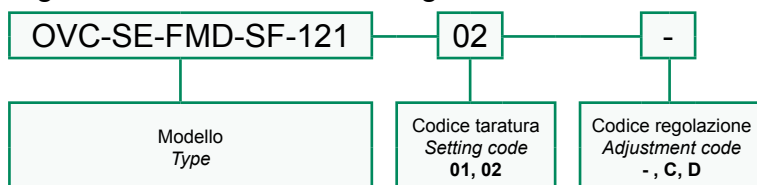
Taratura Setting	La valvola deve essere tarata almeno 1.3 volte la massima pressione indotta dal carico The valve must be set at least 1.3 times maximum load induced pressure		
	Codice Code	Taratura standard Standard setting (Q=5 l/min)	Campo di taratura Adj. Pressure range
01	100 bar 1450 psi	20÷200 bar 290÷2900 psi	Bianco White
02	280 bar 4000 psi	50÷350 bar 725÷5000 psi	Nero Black

Regolazioni Adjustments			
- Vite esterna esagono incassato Leakproof hex socket screw	C Piomatura Sealing cap	D Cappellotto Cap	

Dati e tarature ottenuti usando olio con viscosità 30 cSt a 50°C Performances and calibrations are carried out by using hydraulic oil with 30 cSt viscosity at 50°C	
Viscosità consigliate Recommended viscosity	10 ÷ 420 cSt
Temperature di lavoro Working temperature	-20 ÷ +90 °C
Filtrazione assoluta Absolute filtration	25 µ



Sigla di ordinazione / Ordering code

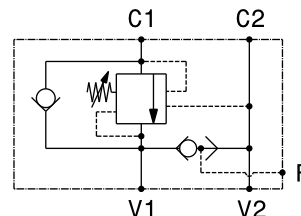
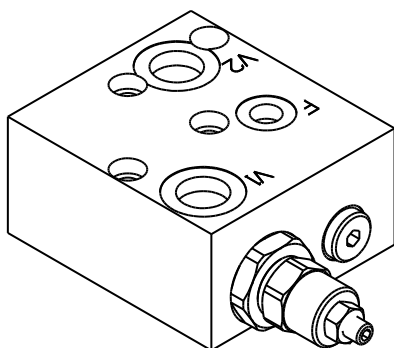


I dati non sono impegnativi, **CBF** si riserva di apportare modifiche senza preavviso.
 The specifications are not binding, **CBF** reserves the right to introduce modifications without notice.

Valvola OVERCENTER semplice effetto a cartuccia con sblocco freno flangiabile su motori DANFOSS-OMP-OMPL-OMR
 Single effect, cartridge OVERCENTER valve with brake unclamping, flangeable to DANFOSS OMP-OMPL-OMR motors

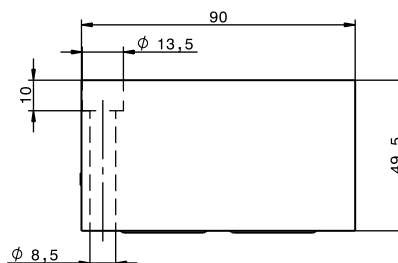
mod. OVC-SE-FMD-SF-C-12

Corpo in alluminio
 Aluminium body



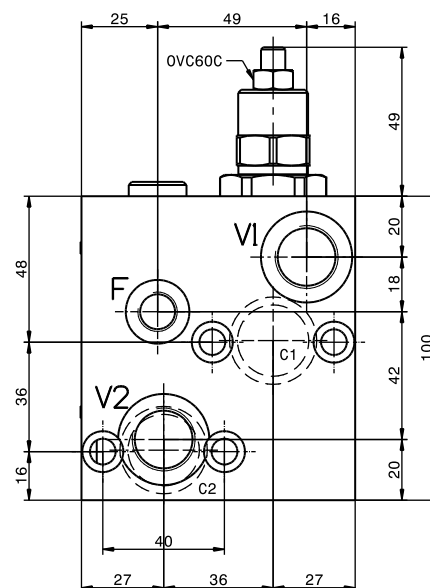
Portata massima Max flow	60 l/min 16 gpm
Pressione massima Max pressure	350 bar 5000 psi
Rapporto di pilotaggio standard Standard pilot ratio	4,25:1
Rapporto di pilotaggio a richiesta Pilot ratio upon request	3:1 8:1 10:1

Taratura Setting	La valvola deve essere tarata almeno 1.3 volte la massima pressione indotta dal carico. The valve must be set at least 1.3 times maximum load induced pressure		
Codice Code	Taratura standard Standard setting (Q=5 l/min)	Campo di taratura Adj. Pressure range	Colore molla Spring color
01	100 bar 1450 psi	20+200 bar 290+2900 psi	Bianco White
02	280 bar 4000 psi	50+350 bar 725+5000 psi	Nero Black



Regolazioni Adjustments

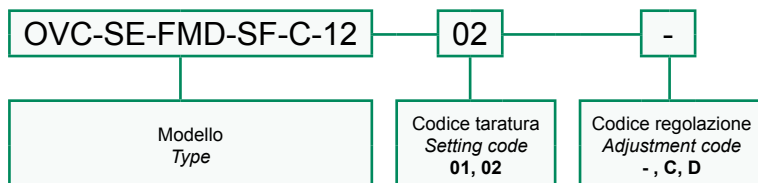
-	C	D
Vite esterna esagono incassato Leakproof hex socket screw	Piombatura Sealing cap	Cappello Cap



Dati e tarature ottenuti usando olio con viscosità 30 cSt a 50°C
 Performances and calibrations are carried out by using hydraulic oil with 30 cSt viscosity at 50°C

Viscosità consigliate Recommended viscosity	10 ÷ 420 cSt
Temperature di lavoro Working temperature	-20 ÷ +90 °C
Filtrazione assoluta Absolute filtration	25 µ

Sigla di ordinazione / Ordering code

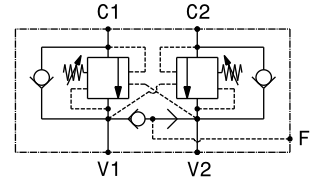
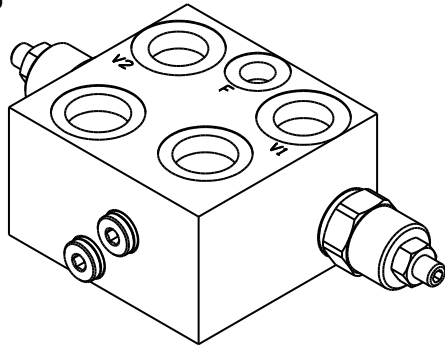


I dati non sono impegnativi, **CBF** si riserva di apportare modifiche senza preavviso.
 The specifications are not binding, **CBF** reserves the right to introduce modifications without notice.

Valvola OVERCENTER semplice effetto con sblocco freno flangiabile su motori SAMHYDRAULIK AG-AR
 Single effect OVERCENTER valve with brake unclamping, flangeable to SAMHYDRAULIK motors AG-AR

mod. OVC-SE-FMSH-SF-VC-12

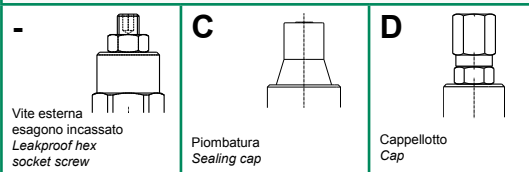
Corpo in alluminio
 Aluminium body



Portata massima Max flow	60 l/min 16 gpm
Pressione massima Max pressure	350 bar 5000 psi
Rapporto di pilotaggio standard Standard pilot ratio	4,25:1
Rapporto di pilotaggio a richiesta Pilot ratio upon request	3:1 8:1 10:1

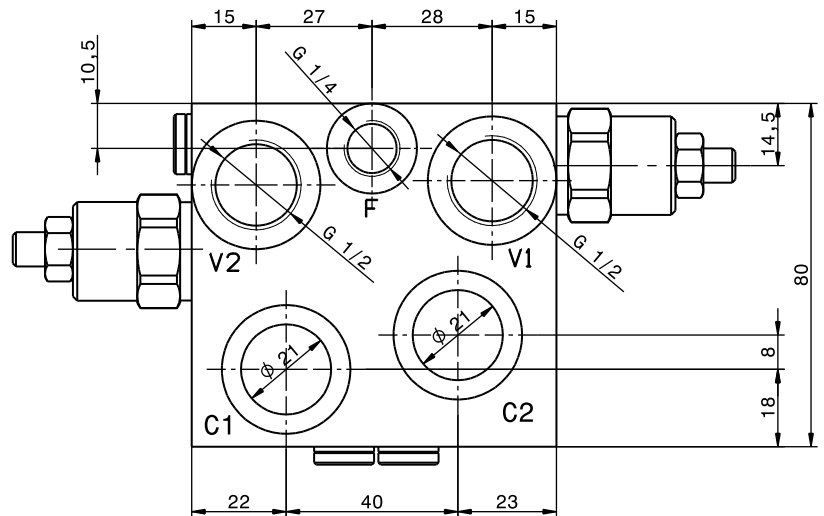
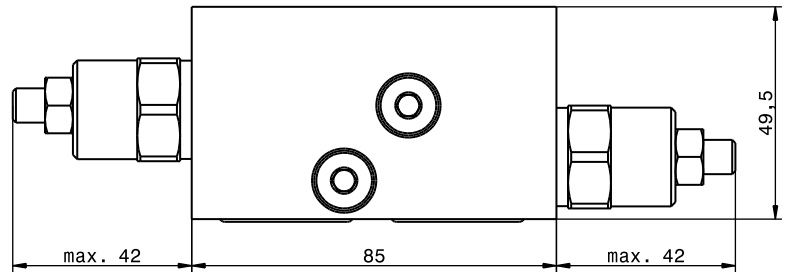
Taratura Setting	La valvola deve essere tarata almeno 1.3 volte la massima pressione indotta dal carico The valve must be set at least 1.3 times maximum load induced pressure		
	Codice Code	Taratura standard Standard setting (Q=5 l/min)	Campo di taratura Adj. Pressure range
01	100 bar 1450 psi	20+200 bar 290+2900 psi	Bianco White
02	280 bar 4000 psi	50+350 bar 725+5000 psi	Nero Black

Regolazioni Adjustments



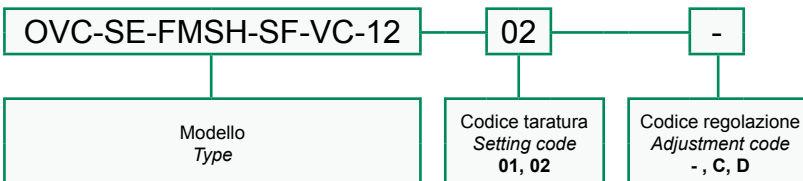
Dati e tarature ottenuti usando olio con viscosità 30 cSt a 50°C
 Performances and calibrations are carried out by using hydraulic oil with 30 cSt viscosity at 50°C

Viscosità consigliate Recommended viscosity	10 ÷ 420 cSt
Temperature di lavoro Working temperature	-20 ÷ +90 °C
Filtrazione assoluta Absolute filtration	25 µ



Vite cava disponibile a richiesta Nipple screw available upon request	Codice di ordinazione Ordering Code KITV0005
--	---

Sigla di ordinazione / Ordering code

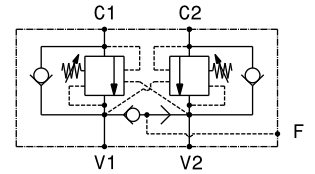
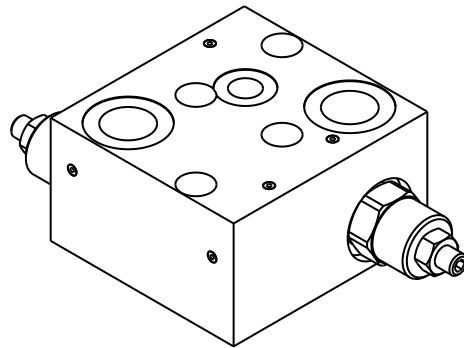


I dati non sono impegnativi, CBF si riserva di apportare modifiche senza preavviso.
 The specifications are not binding, CBF reserves the right to introduce modifications without notice.

Valvola OVERCENTER doppio effetto con sblocco freno flangiabile su motori DANFOSS-OMP-OMPL-OMR
 Double effect OVERCENTER valve with brake unclamping, flangeable to DANFOSS OMP-OMPL-OMR motors

mod. OVC-DE-FMD-SF-12

Corpo in alluminio
 Aluminium body



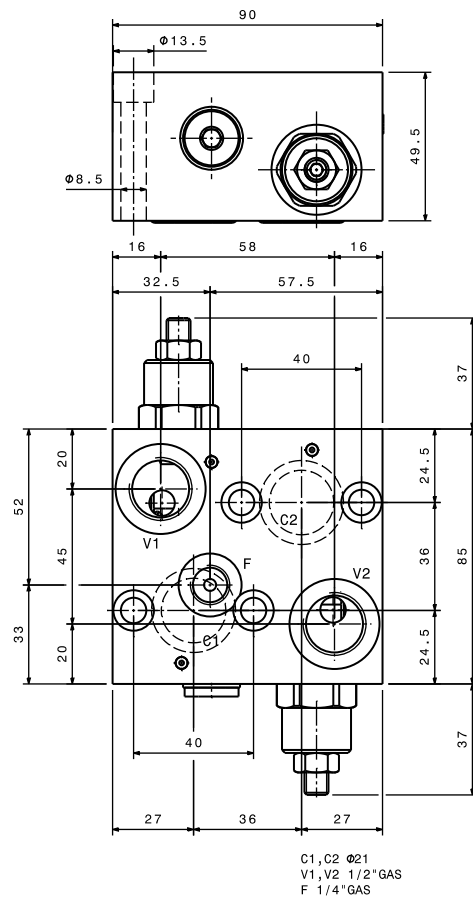
Portata massima Max flow	60 l/min 16 gpm
Pressione massima Max pressure	350 bar 5000 psi
Rapporto di pilotaggio standard Standard pilot ratio	4,25:1
Rapporto di pilotaggio a richiesta Pilot ratio upon request	3:1 8:1 10:1

Taratura Setting	La valvola deve essere tarata almeno 1.3 volte la massima pressione indotta dal carico The valve must be set at least 1.3 times maximum load induced pressure			
	Codice Code	Taratura standard Standard setting (Q=5 l/min)	Campo di taratura Adj. Pressure range	Colore molla Spring color
	01	100 bar 1450 psi	20+200 bar 290+2900 psi	Bianco White
	02	280 bar 4000 psi	50+350 bar 725+5000 psi	Nero Black

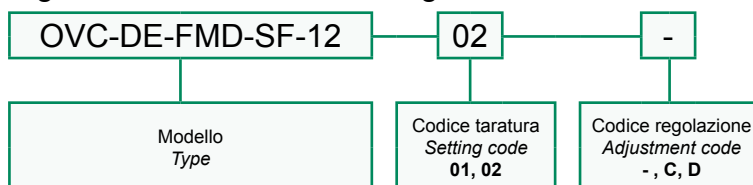
Regolazioni Adjustments

-	C	D
Vite esterna esagono incassato Leakproof hex socket screw	Piombatura Sealing cap	Cappellotto Cap

Dati e tarature ottenuti usando olio con viscosità 30 cSt a 50°C Performances and calibrations are carried out by using hydraulic oil with 30 cSt viscosity at 50°C	
Viscosità consigliate Recommended viscosity	10 ÷ 420 cSt
Temperature di lavoro Working temperature	-20 ÷ +90 °C
Filtrazione assoluta Absolute filtration	25 µ



Sigla di ordinazione / Ordering code

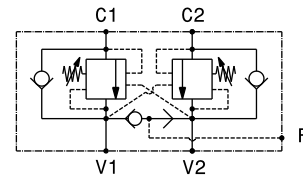
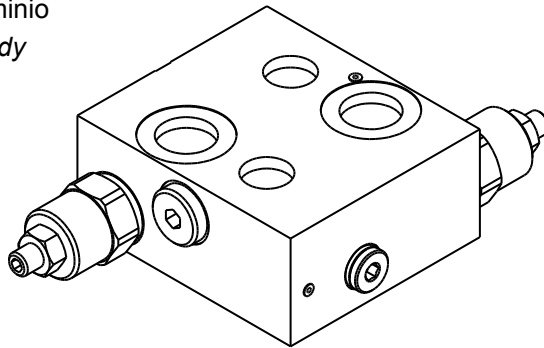


I dati non sono impegnativi, **CBF** si riserva di apportare modifiche senza preavviso.
 The specifications are not binding, **CBF** reserves the right to introduce modifications without notice.

Valvola OVERCENTER doppio effetto con sblocco freno flangiabile su motori DANFOSS-OMS-OMSW-OMSS
 Double effect OVERCENTER valve with brake unclamping, flangeable to DANFOSS OMS-OMSW-OMSS motors

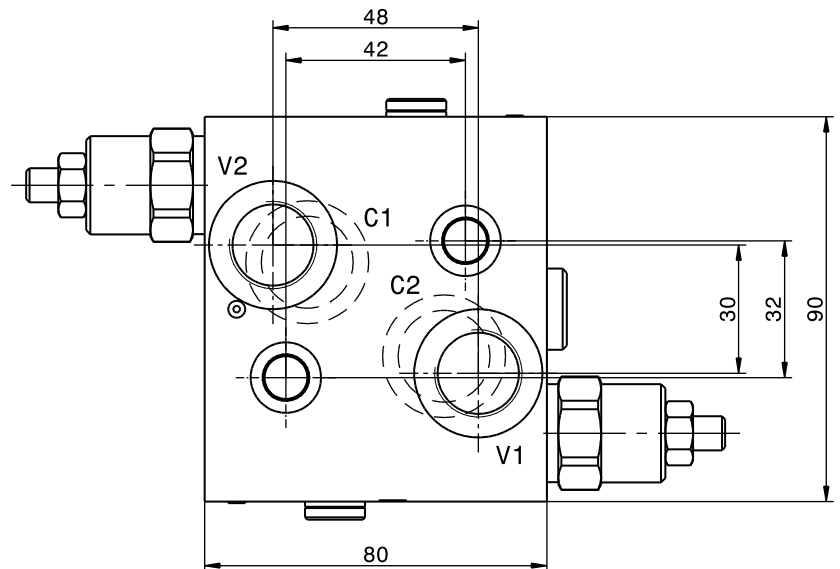
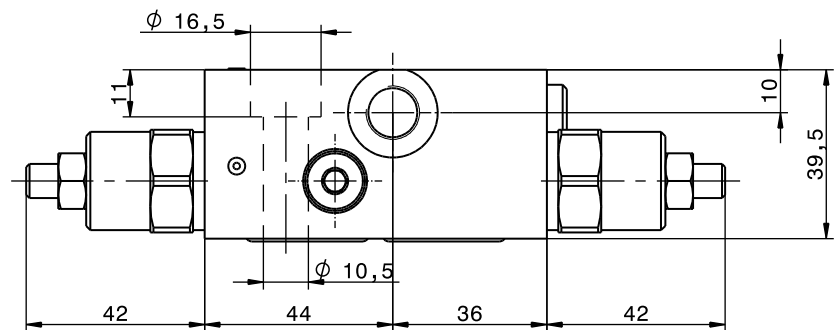
mod. OVC-DE-FMD-SF-121

Corpo in alluminio
 Aluminium body

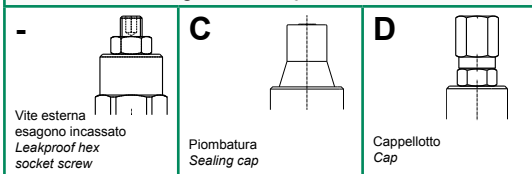


Portata massima Max flow	60 l/min 16 gpm
Pressione massima Max pressure	350 bar 5000 psi
Rapporto di pilotaggio standard Standard pilot ratio	4,25:1
Rapporto di pilotaggio a richiesta Pilot ratio upon request	3:1 8:1 10:1

Taratura Setting	La valvola deve essere tarata almeno 1.3 volte la massima pressione indotta dal carico. The valve must be set at least 1.3 times maximum load induced pressure		
	Codice Code	Taratura standard Standard setting (Q=5 l/min)	Campo di taratura Adj. Pressure range
01	100 bar 1450 psi	20÷200 bar 290÷2900 psi	Bianco White
02	280 bar 4000 psi	50÷350 bar 725÷5000 psi	Nero Black

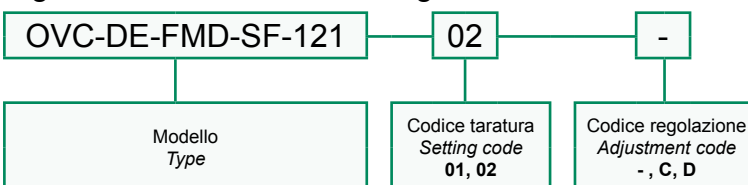


Regolazioni Adjustments



Dati e tarature ottenuti usando olio con viscosità 30 cSt a 50°C Performances and calibrations are carried out by using hydraulic oil with 30 cSt viscosity at 50°C	
Viscosità consigliate Recommended viscosity	10 ÷ 420 cSt
Temperature di lavoro Working temperature	-20 ÷ +90 °C
Filtrazione assoluta Absolute filtration	25 µ

Sigla di ordinazione / Ordering code

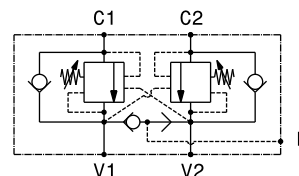
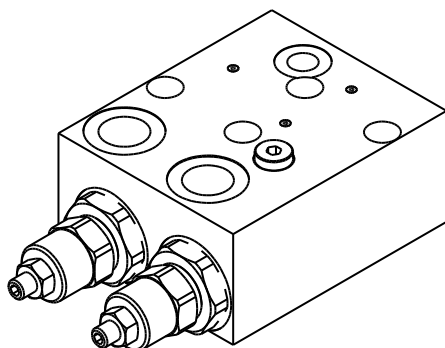


I dati non sono impegnativi, **CBF** si riserva di apportare modifiche senza preavviso.
 The specifications are not binding, **CBF** reserves the right to introduce modifications without notice.

Valvola OVERCENTER doppio effetto a cartuccia con sblocco freno flangiabile su motori DANFOSS-OMP-OMPL-OMR
 Double effect cartridge OVERCENTER valve with brake unclamping, flangeable to DANFOSS OMP-OMPL-OMR motors

mod. OVC-DE-FMD-SF-C-12

Corpo in alluminio
 Aluminium body



Portata massima Max flow	60 l/min 16 gpm
Pressione massima Max pressure	350 bar 5000 psi
Rapporto di pilotaggio standard Standard pilot ratio	4,25:1
Rapporto di pilotaggio a richiesta Pilot ratio upon request	3:1 8:1 10:1

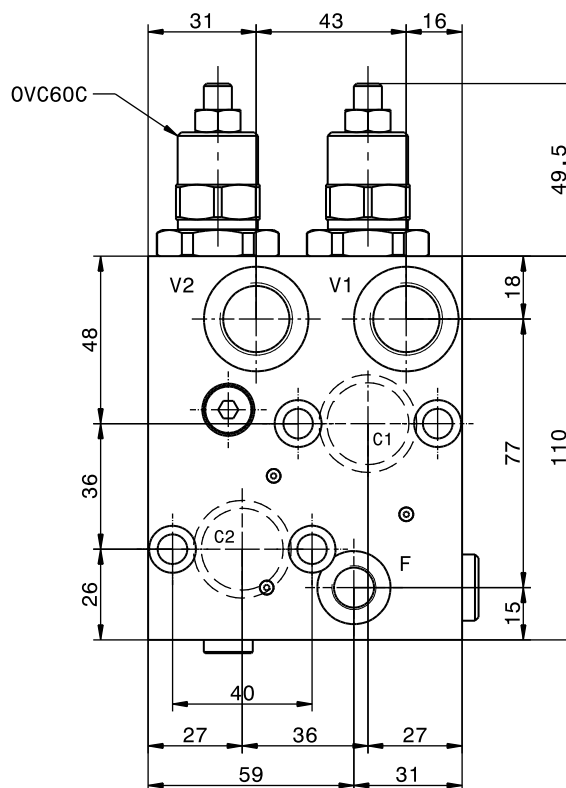
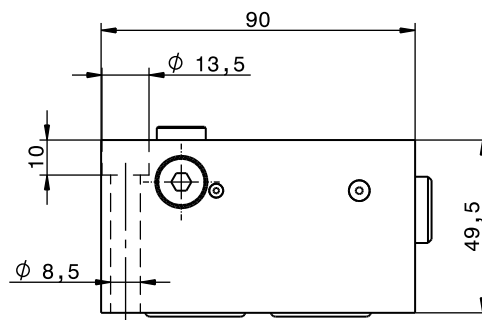
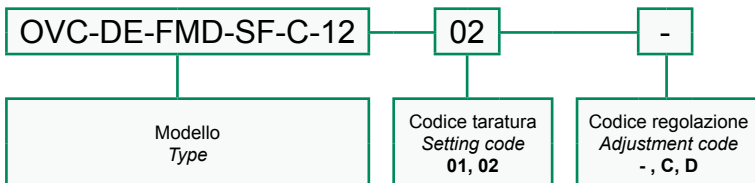
Taratura Setting	La valvola deve essere tarata almeno 1.3 volte la massima pressione indotta dal carico. The valve must be set at least 1.3 times maximum load induced pressure		
	Codice Code	Taratura standard Standard setting (Q=5 l/min)	Campo di taratura Adj. Pressure range
01	100 bar 1450 psi	20÷200 bar 290÷2900 psi	Bianco White
02	280 bar 4000 psi	50÷350 bar 725÷5000 psi	Nero Black

Regolazioni Adjustments

-	C	D
Vite esterna esagono incassato Leakproof hex socket screw	Piombatura Sealing cap	Cappellotto Cap

Dati e tarature ottenuti usando olio con viscosità 30 cSt a 50°C Performances and calibrations are carried out by using hydraulic oil with 30 cSt viscosity at 50°C	
Viscosità consigliate Recommended viscosity	10 ÷ 420 cSt
Temperature di lavoro Working temperature	-20 ÷ +90 °C
Filtrazione assoluta Absolute filtration	25 µ

Sigla di ordinazione / Ordering code

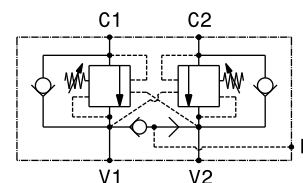
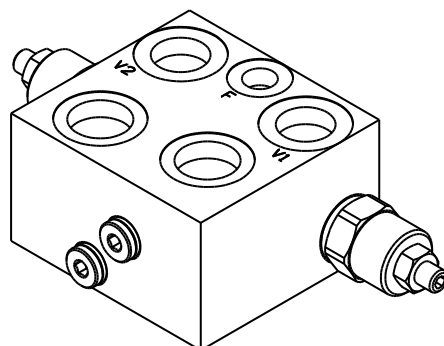


I dati non sono impegnativi, **CBF** si riserva di apportare modifiche senza preavviso.
 The specifications are not binding, **CBF** reserves the right to introduce modifications without notice.

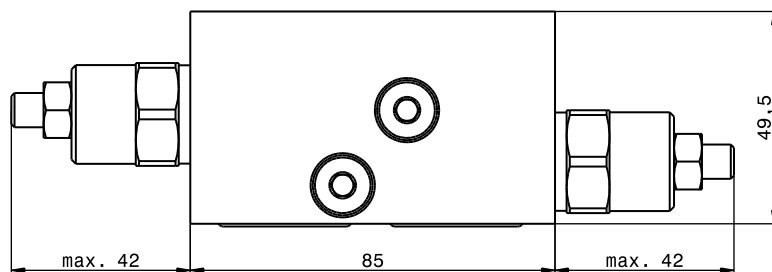
Valvola OVERCENTER doppio effetto con sblocco freno flangiabile su motori SAMHYDRAULIK AG-AR
 Double effect OVERCENTER valve with brake unclamping, flangeable to SAMHYDRAULIK motors AG-AR

mod. OVC-DE-FMSH-SF-VC-12

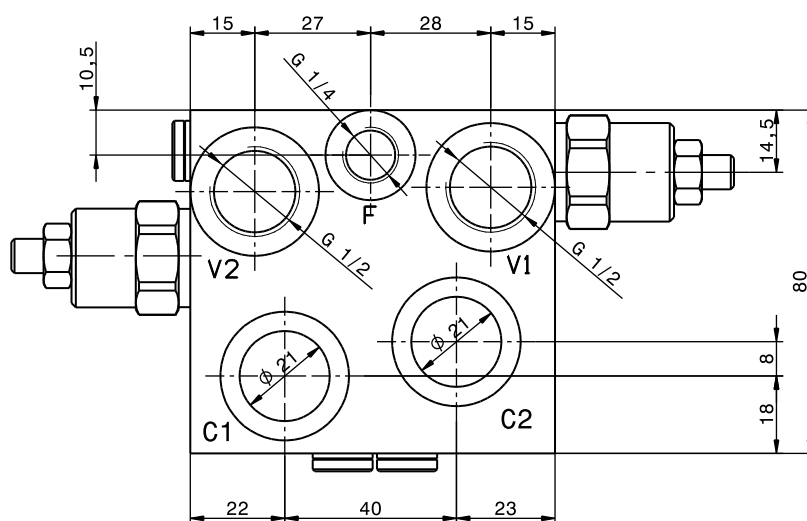
Corpo in alluminio
 Aluminium body



Portata massima Max flow	60 l/min 16 gpm
Pressione massima Max pressure	350 bar 5000 psi
Rapporto di pilotaggio standard Standard pilot ratio	4,25:1
Rapporto di pilotaggio a richiesta Pilot ratio upon request	3:1 8:1 10:1



Taratura Setting	La valvola deve essere tarata almeno 1.3 volte la massima pressione indotta dal carico The valve must be set at least 1.3 times maximum load induced pressure		
	Codice Code	Taratura standard Standard setting (Q=5 l/min)	Campo di taratura Adj. Pressure range
01	100 bar 1450 psi	20+200 bar 290+2900 psi	Bianco White
02	280 bar 4000 psi	50+350 bar 725+5000 psi	Nero Black

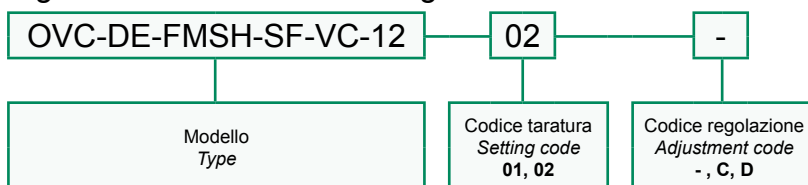


Regolazioni Adjustments		
- Vite esterna esagono incassato Leakproof hex socket screw	C Piombatura Sealing cap	D Cappellotto Cap

Dati e tarature ottenuti usando olio con viscosità 30 cSt a 50°C Performances and calibrations are carried out by using hydraulic oil with 30 cSt viscosity at 50°C	
Viscosità consigliate Recommended viscosity	10 ÷ 420 cSt
Temperature di lavoro Working temperature	-20 ÷ +90 °C
Filtrazione assoluta Absolute filtration	25 µ

Vite cava disponibile a richiesta Nipple screw available upon request	Codice di ordinazione Ordering Code KITV0005
--	---

Sigla di ordinazione / Ordering code

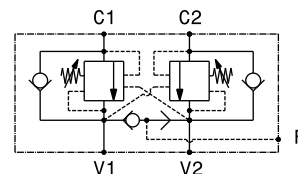
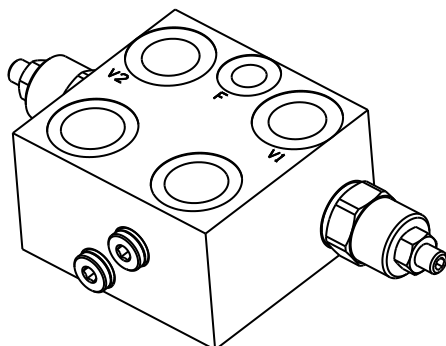


I dati non sono impegnativi, **CBF** si riserva di apportare modifiche senza preavviso.
 The specifications are not binding, **CBF** reserves the right to introduce modifications without notice.

Valvola OVERCENTER doppio effetto con sblocco freno flangiabile su motori CHAR-LYNN, serie H
 Double effect OVERCENTER valve with brake unclamping, flangeable to CHAR-LYNN motors, H serie

mod. OVC-DE-FMCL-SF-VC-12

Corpo in alluminio
 Aluminium body



Portata massima Max flow	60 l/min 16 gpm
Pressione massima Max pressure	350 bar 5000 psi
Rapporto di pilotaggio standard Standard pilot ratio	4,25:1
Rapporto di pilotaggio a richiesta Pilot ratio upon request	3:1 8:1 10:1

Taratura Setting
 La valvola deve essere tarata almeno 1.3 volte la massima pressione indotta dal carico.
 The valve must be set at least 1.3 times maximum load induced pressure

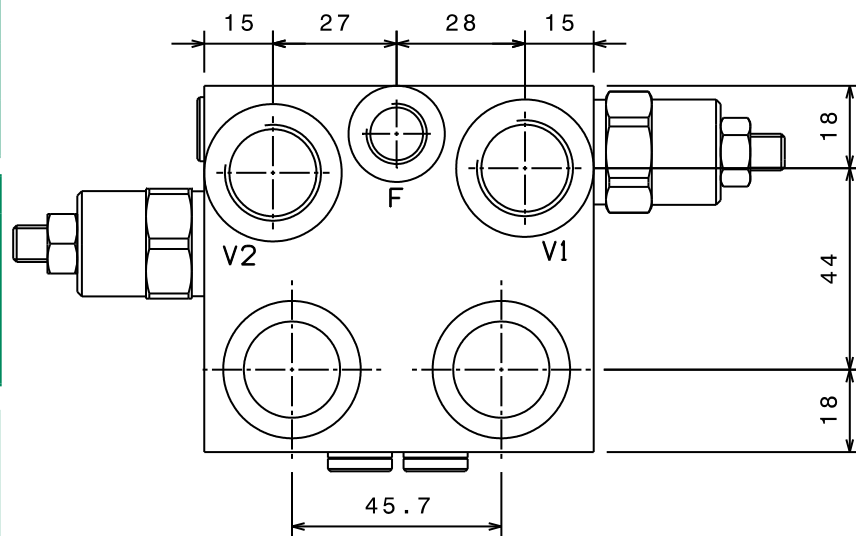
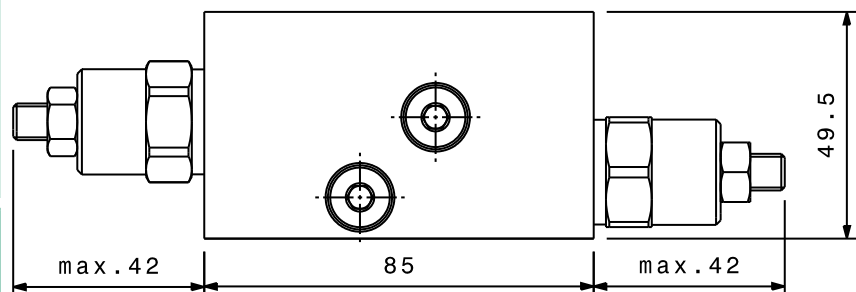
Codice Code	Taratura standard Standard setting (Q=5 l/min)	Campo di taratura Adj. Pressure range	Colore molla Spring color
01	100 bar 1450 psi	20+200 bar 290+2900 psi	Bianco White
02	280 bar 4000 psi	50+350 bar 725+5000 psi	Nero Black

Regolazioni Adjustments

-	C	D
Vite esterna esagono incassato Leakproof hex socket screw	Piombatura Sealing cap	Cappello Cap

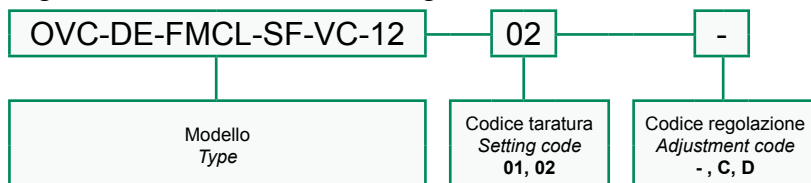
Dati e tarature ottenuti usando olio con viscosità 30 cSt a 50°C
 Performances and calibrations are carried out by using hydraulic oil with 30 cSt viscosity at 50°C

Viscosità consigliate Recommended viscosity	10 ÷ 420 cSt
Temperature di lavoro Working temperature	-20 ÷ +90 °C
Filtrazione assoluta Absolute filtration	25 µ



Vite cava disponibile a richiesta Nipple screw available upon request	Codice di ordinazione Ordering Code KITV0005
--	---

Sigla di ordinazione / Ordering code

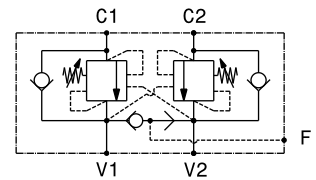
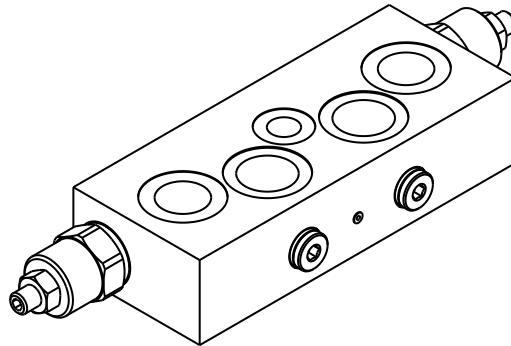


I dati non sono impegnativi, **CBF** si riserva di apportare modifiche senza preavviso.
 The specifications are not binding, **CBF** reserves the right to introduce modifications without notice.

Valvola OVERCENTER doppio effetto con sblocco freno flangiabile su motori PARKER, serie TE-TJ
 Double effect OVERCENTER valve with brake unclamping, flangeable to PARKER motors, TE-TJ series

mod. OVC-DE-FMP-SF-VC-12

Corpo in alluminio
 Aluminium body

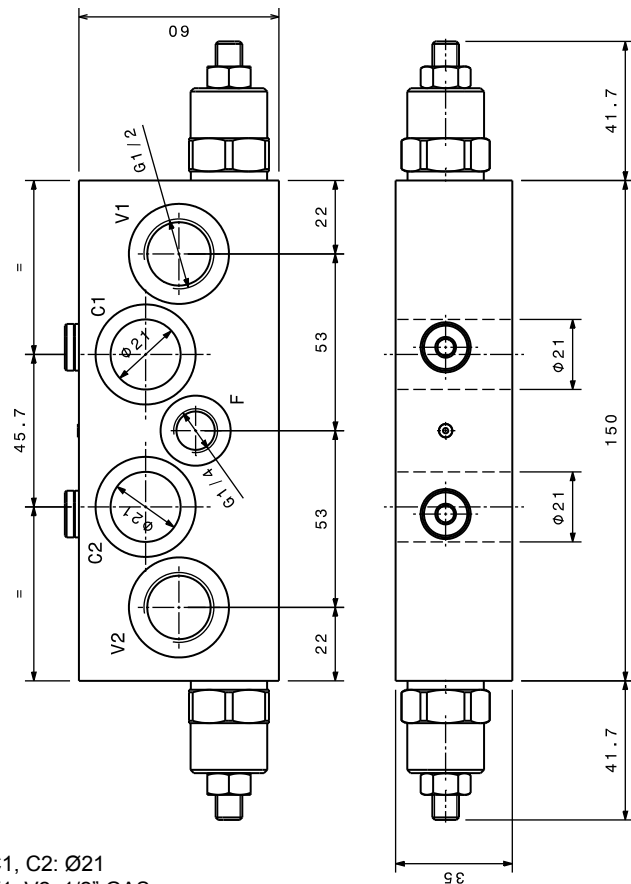


Portata massima Max flow	60 l/min 16 gpm
Pressione massima Max pressure	350 bar 5000 psi
Rapporto di pilotaggio standard Standard pilot ratio	4,25:1
Rapporto di pilotaggio a richiesta Pilot ratio upon request	3:1 8:1 10:1

Taratura Setting	La valvola deve essere tarata almeno 1.3 volte la massima pressione indotta dal carico The valve must be set at least 1.3 times maximum load induced pressure			
	Codice Code	Taratura standard Standard setting (Q=5 l/min)	Campo di taratura Adj. Pressure range	Colore molla Spring color
	01	100 bar 1450 psi	20+200 bar 290+2900 psi	Bianco White
	02	280 bar 4000 psi	50+350 bar 725+5000 psi	Nero Black

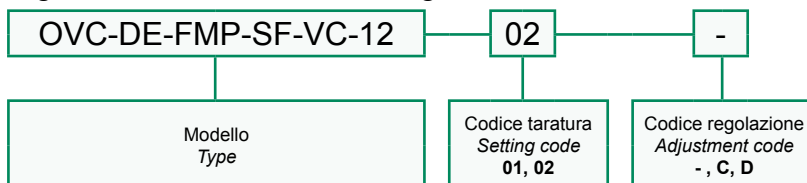
Regolazioni Adjustments		
-	C	D
Vite esterna esagono incassato Leakproof hex socket screw	Piombatura Sealing cap	Cappellotto Cap

Dati e tarature ottenuti usando olio con viscosità 30 cSt a 50°C Performances and calibrations are carried out by using hydraulic oil with 30 cSt viscosity at 50°C	
Viscosità consigliate Recommended viscosity	10 ÷ 420 cSt
Temperature di lavoro Working temperature	-20 ÷ +90 °C
Filtrazione assoluta Absolute filtration	25 µ



C1, C2: Ø21
 V1, V2: 1/2" GAS
 F: 1/4" GAS

Sigla di ordinazione / Ordering code



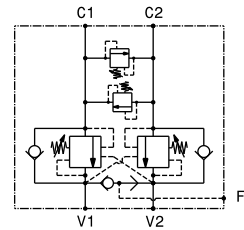
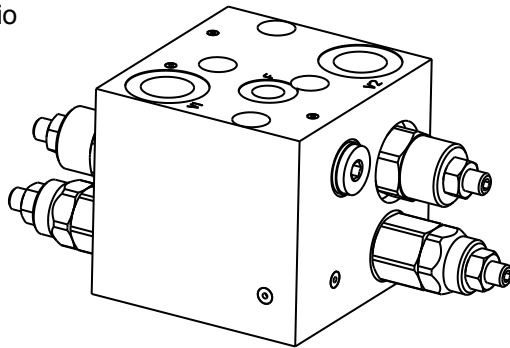
Vite cava disponibile a richiesta Nipple screw available upon request	Codice di ordinazione Ordering Code KITV0003
--	---

I dati non sono impegnativi, CBF si riserva di apportare modifiche senza preavviso.
 The specifications are not binding, CBF reserves the right to introduce modifications without notice.

Valvola OVERCENTER doppio effetto - antishock con sblocco freno, flangiabile su motori DANFOSS-OMP-OMPL-OMR
 Double effect OVERCENTER - antishock with valve brake unclamping, flangeable to DANFOSS OMP-OMPL-OMR motors

mod. OVC-DE-FMD-SF-VLPDI-12

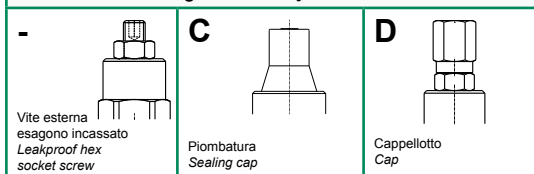
Corpo in alluminio
 Aluminium body



Portata massima Max flow	60 l/min 16 gpm
Pressione massima Max pressure	350 bar 5000 psi
Rapporto di pilotaggio standard Standard pilot ratio	4,25:1
Rapporto di pilotaggio a richiesta Pilot ratio upon request	3:1 8:1 10:1

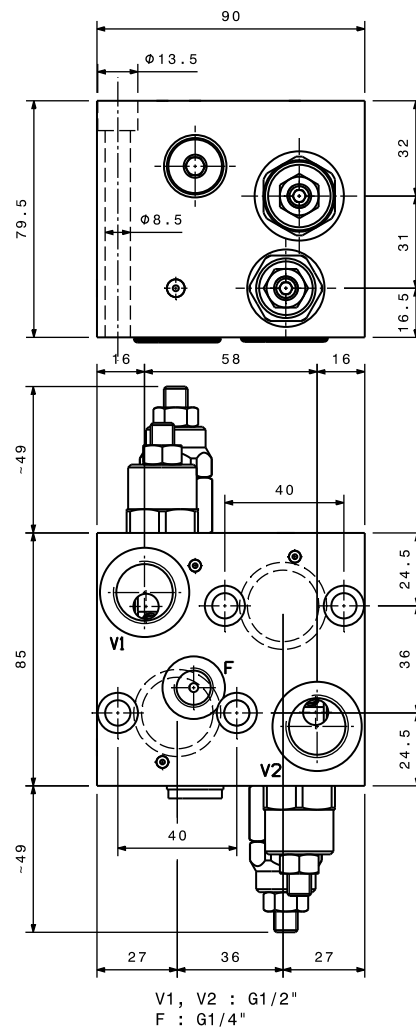
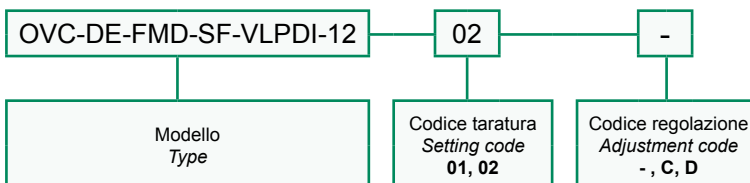
Taratura Setting	La valvola deve essere tarata almeno 1.3 volte la massima pressione indotta dal carico The valve must be set at least 1.3 times maximum load induced pressure			
	Codice Code	Taratura standard Standard setting (Q=5 l/min)	Campo di taratura Adj. Pressure range	Colore molla Spring color
	01	100 bar 1450 psi	20+200 bar 290+2900 psi	Bianco White
	02	280 bar 4000 psi	50+350 bar 725+5000 psi	Nero Black

Regolazioni Adjustments



Dati e tarature ottenuti usando olio con viscosità 30 cSt a 50°C Performances and calibrations are carried out by using hydraulic oil with 30 cSt viscosity at 50°C	
Viscosità consigliate Recommended viscosity	10 ÷ 420 cSt
Temperature di lavoro Working temperature	-20 ÷ +90 °C
Filtrazione assoluta Absolute filtration	25 µ

Sigla di ordinazione / Ordering code

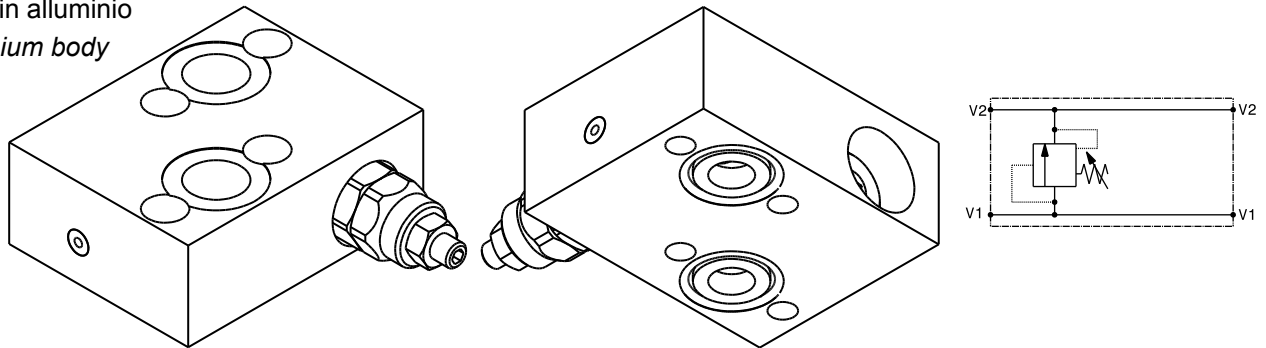


I dati non sono impegnativi, **CBF** si riserva di apportare modifiche senza preavviso.
 The specifications are not binding, **CBF** reserves the right to introduce modifications without notice.

Valvola antiurto semplice effetto flangiabile su motori DANFOSS OMP-OMPL-OMR
Single effect antishock valve, flangeable to DANFOSS OMP-OMPL-OMR motors

mod. VLP40-S-FMD

Corpo in alluminio
Aluminium body



Portata massima Max flow	40 l/min 10.5 gpm
Pressione massima Max pressure	300 bar 4300 psi

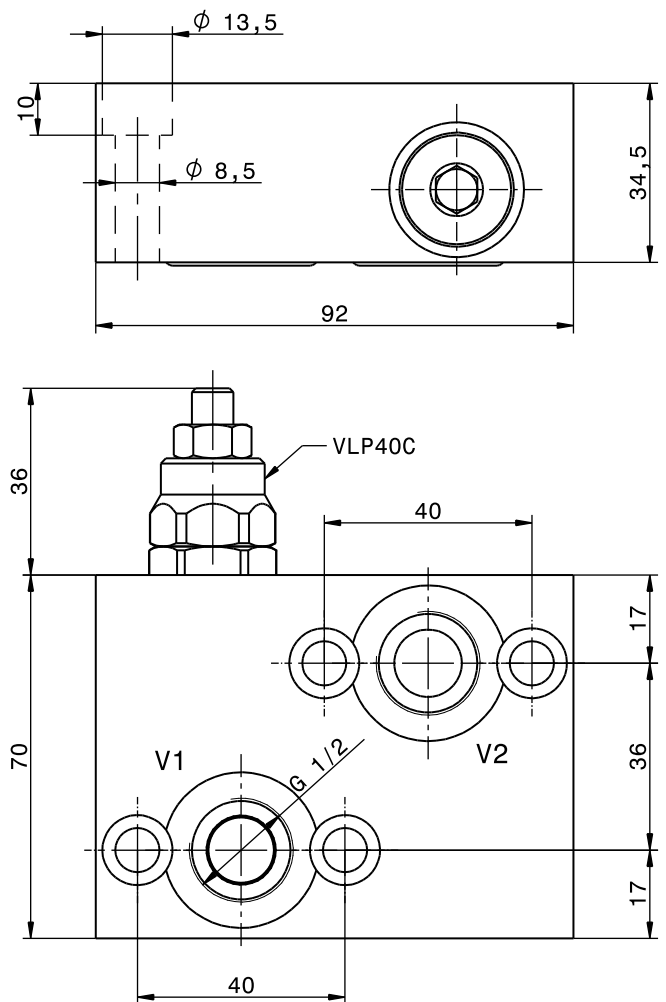
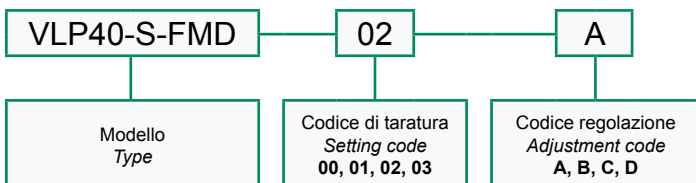
Taratura Setting		
Codice Code	Taratura standard Standard setting (Q=5 l/min)	Campo di taratura Adj. Pressure range
00	40 bar 580 psi	5÷40 bar 72.5÷58sdx0 psi
01	80 bar 1160 psi	20÷100 bar 290÷1450 psi
02	180 bar 2600 psi	40÷250 bar 580÷3600 psi
03	250 bar 3600 psi	60÷350 bar 870÷5000 psi

Dati e tarature ottenuti usando olio con viscosità 30 cSt a 50°C
Performances and calibrations are carried out by using hydraulic oil with 30 cSt viscosity at 50°C

Viscosità consigliate Recommended viscosity	10 ÷ 420 cSt
Temperature di lavoro Working temperature	-20 ÷ +90 °C
Filtrazione assoluta Absolute filtration	25 µ

Regolazioni Adjustments			
A Vite esterna esagono incassato Leakproof hex socket screw	B Volantino e dado Handknob and locknut	C Piomatura Sealing cap	D Cappellino Cap

Sigla di ordinazione / Ordering code

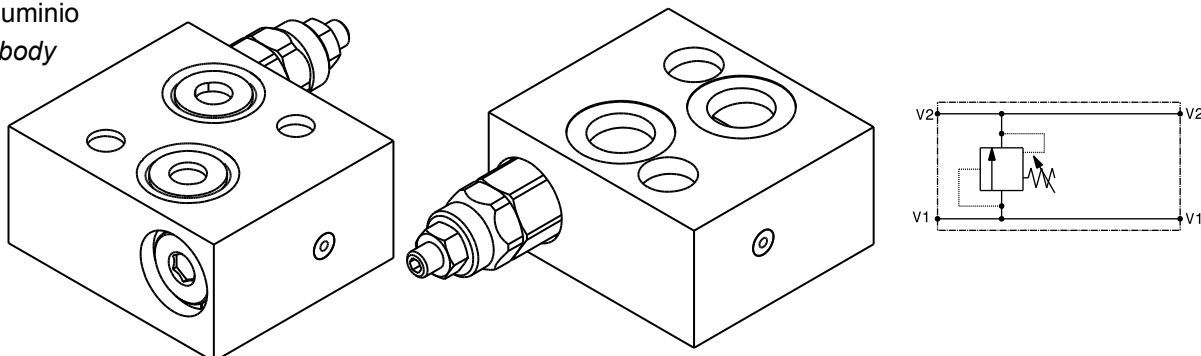


I dati non sono impegnativi, CBF si riserva di apportare modifiche senza preavviso.
The specifications are not binding, CBF reserves the right to introduce modifications without notice.

Valvola antiurto semplice effetto flangiabile su motori DANFOSS OMS-OMSW-OMSS
Single effect antishock valve, flangeable to DANFOSS OMS-OMSW-OMSS motors

mod. VLP40-S-FMD1

Corpo in alluminio
Aluminium body



Portata massima Max flow	40 l/min 10.5 gpm
Pressione massima Max pressure	300 bar 4300 psi

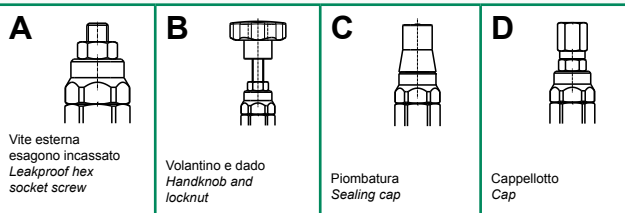
Taratura
Setting

Codice Code	Taratura standard Standard setting (Q=5 l/min)	Campo di taratura Adj. Pressure range
00	40 bar 580 psi	5÷40 bar 72.5÷580 psi
01	80 bar 1160 psi	20÷100 bar 290÷1450 psi
02	180 bar 2600 psi	40÷250 bar 580÷3600 psi
03	250 bar 3600 psi	60÷350 bar 870÷5000 psi

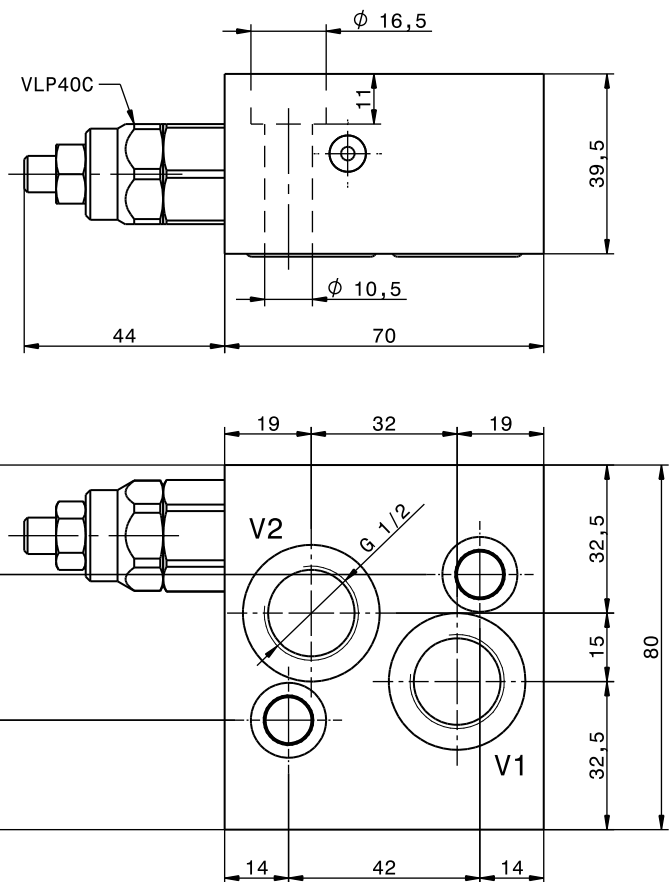
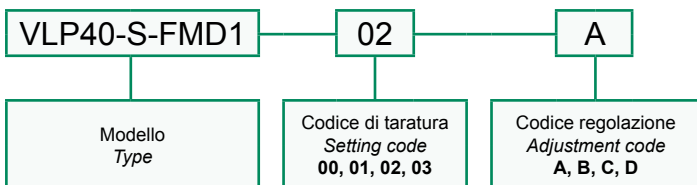
Dati e tarature ottenuti usando olio con viscosità 30 cSt a 50°C
Performances and calibrations are carried out by using hydraulic oil with 30 cSt viscosity at 50°C

Viscosità consigliate Recommended viscosity	10 ÷ 420 cSt
Temperature di lavoro Working temperature	-20 ÷ +90 °C
Filtrazione assoluta Absolute filtration	25 µ

Regolazioni
Adjustments



Sigla di ordinazione / Ordering code

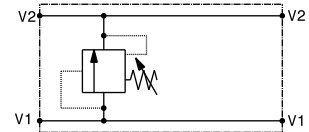
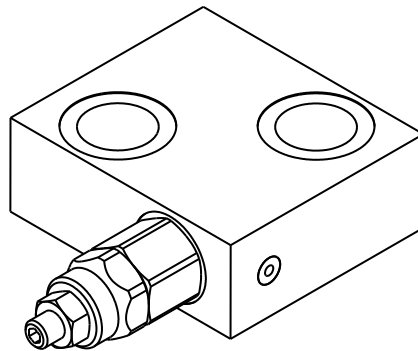


I dati non sono impegnativi, CBF si riserva di apportare modifiche senza preavviso.
The specifications are not binding, CBF reserves the right to introduce modifications without notice.

Valvola antiurto semplice effetto flangiabile con vite cava su motori DANFOSS OMP-OMPL-OMR
 Single effect antishock valve, nipple screw flangeable to DANFOSS OMP-OMPL-OMR motors

mod. VLP40-S-FMD-VC

Corpo in alluminio
 Aluminium body



Portata massima Max flow	40 l/min 10.5 gpm
Pressione massima Max pressure	300 bar 4300 psi

Taratura
Setting

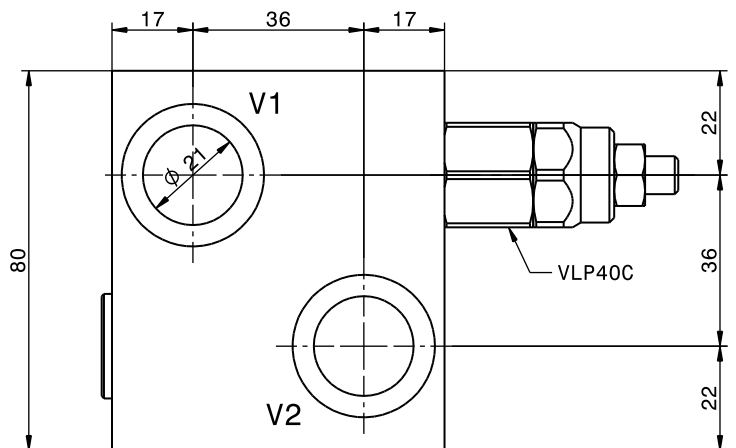
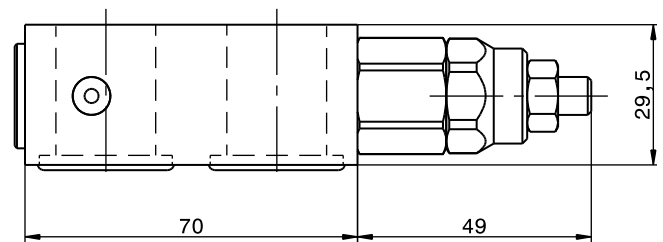
Codice Code	Taratura standard Standard setting (Q=5 l/min)	Campo di taratura Adj. Pressure range
00	40 bar 580 psi	5÷40 bar 72.5÷580 psi
01	80 bar 1160 psi	20÷100 bar 290÷1450 psi
02	180 bar 2600 psi	40÷250 bar 580÷3600 psi
03	250 bar 3600 psi	60÷350 bar 870÷5000 psi

Dati e tarature ottenuti usando olio con viscosità 30 cSt a 50°C
 Performances and calibrations are carried out by using hydraulic oil with 30 cSt viscosity at 50°C

Viscosità consigliate Recommended viscosity	10 ÷ 420 cSt
Temperature di lavoro Working temperature	-20 ÷ +90 °C
Filtrazione assoluta Absolute filtration	25 µ

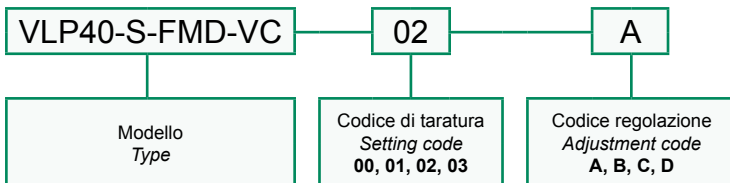
Regolazioni
Adjustments

A 	B 	C 	D
Vite esterna esagono incassato Leakproof hex socket screw	Volantino e dado Handknob and locknut	Piombatura Sealing cap	Cappellotto Cap



Vite cava disponibile a richiesta Nipple screw available upon request	Codice di ordinazione Ordering Code KITV0004
--	---

Sigla di ordinazione / Ordering code

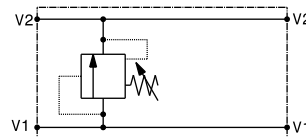
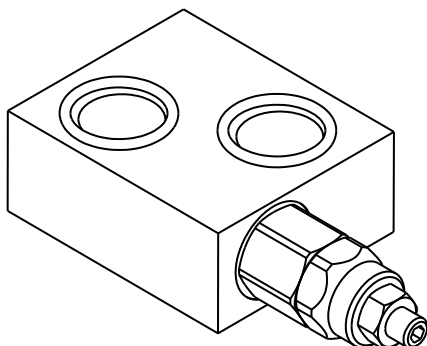


I dati non sono impegnativi, CBF si riserva di apportare modifiche senza preavviso.
 The specifications are not binding, CBF reserves the right to introduce modifications without notice.

Valvola antiurto semplice effetto flangiabile con vite cava su motori DANFOSS OMS-OMSW-OMSS
 Single effect antishock valve, nipple screw flangeable to DANFOSS OMS-OMSW-OMSS motors

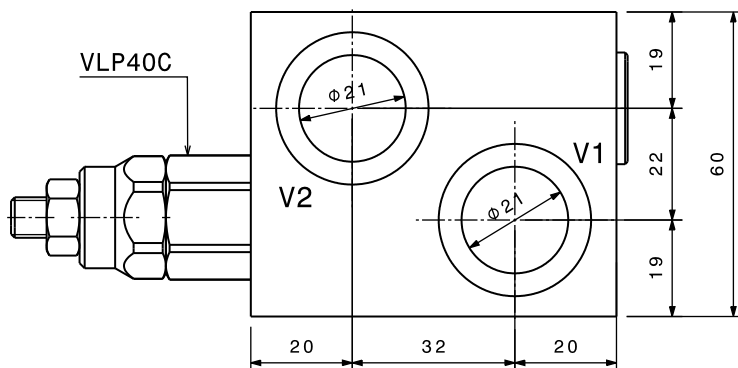
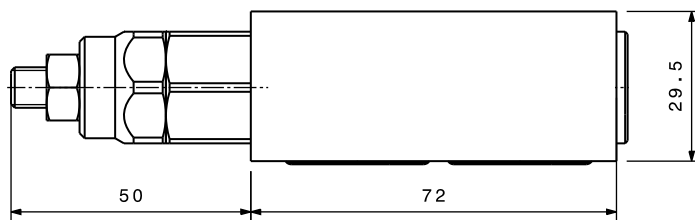
mod. VLP40-S-FMD-VC1

Corpo in alluminio
 Aluminium body



Portata massima Max flow	40 l/min 10.5 gpm
Pressione massima Max pressure	300 bar 4300 psi

Taratura Setting		
Codice Code	Taratura standard Standard setting (Q=5 l/min)	Campo di taratura Adj. Pressure range
00	40 bar 580 psi	5÷40 bar 72.5÷580 psi
01	80 bar 1160 psi	20÷100 bar 290÷1450 psi
02	180 bar 2600 psi	40÷250 bar 580÷3600 psi
03	250 bar 3600 psi	60÷350 bar 870÷5000 psi



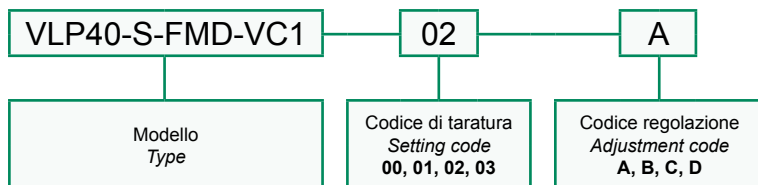
Dati e tarature ottenuti usando olio con viscosità 30 cSt a 50°C
 Performances and calibrations are carried out by using hydraulic oil with 30 cSt viscosity at 50°C

Viscosità consigliate Recommended viscosity	10 ÷ 420 cSt
Temperature di lavoro Working temperature	-20 ÷ +90 °C
Filtrazione assoluta Absolute filtration	25 μ

Regolazioni Adjustments			
A 	B 	C 	D
Vite esterna esagono incassato Leakproof hex socket screw	Volantino e dado Handknob and locknut	Piombatura Sealing cap	Cappello Cap

Vite cava disponibile a richiesta Nipple screw available upon request	Codice di ordinazione Ordering Code KITV0004
--	---

Sigla di ordinazione / Ordering code

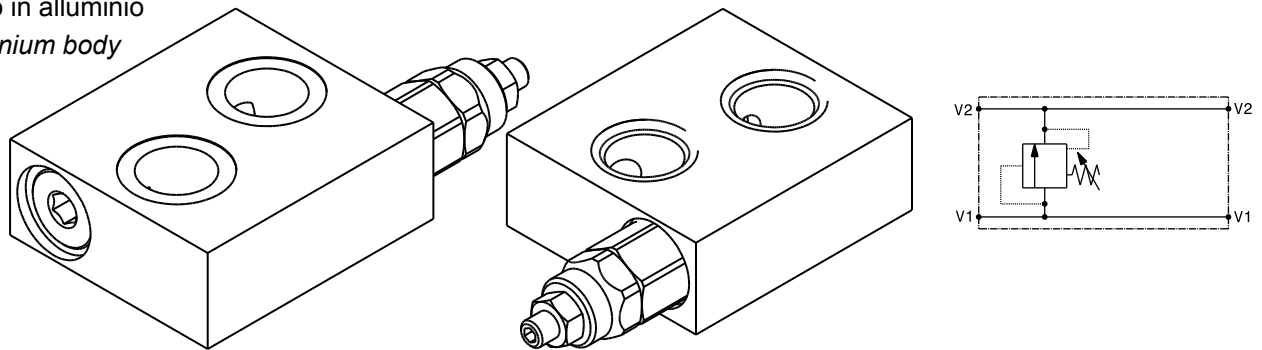


I dati non sono impegnativi, CBF si riserva di apportare modifiche senza preavviso.
 The specifications are not binding, CBF reserves the right to introduce modifications without notice.

Valvola antiurto semplice effetto flangiabile su motori SAMHYDRAULIK AG-AR
 Single effect antishock valve, flangeable to SAMHYDRAULIK AG-AR motors

mod. VLP40-S-FMSH-VC

Corpo in alluminio
 Aluminium body

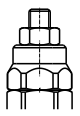
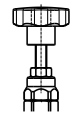
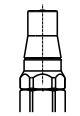
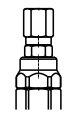


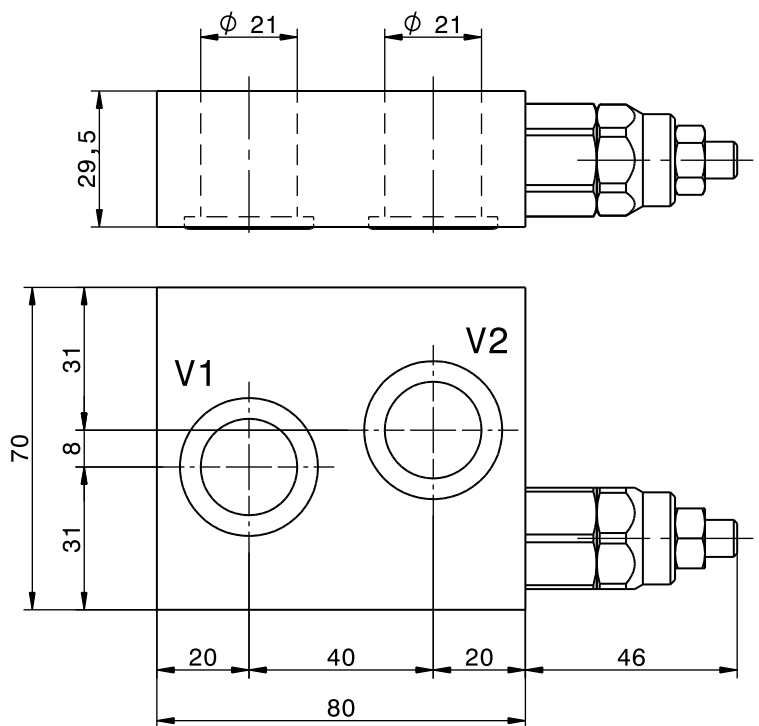
Portata massima Max flow	40 l/min 10.5 gpm
Pressione massima Max pressure	300 bar 4300 psi

Taratura Setting		
Codice Code	Taratura standard Standard setting (Q=5 l/min)	Campo di taratura Adj. Pressure range
00	40 bar 580 psi	5÷40 bar 72.5÷580 psi
01	80 bar 1160 psi	20÷100 bar 290÷1450 psi
02	180 bar 2600 psi	40÷250 bar 580÷3600 psi
03	250 bar 3600 psi	60÷350 bar 870÷5000 psi

Dati e tarature ottenuti usando olio con viscosità 30 cSt a 50°C
 Performances and calibrations are carried out by using hydraulic oil with 30 cSt viscosity at 50°C

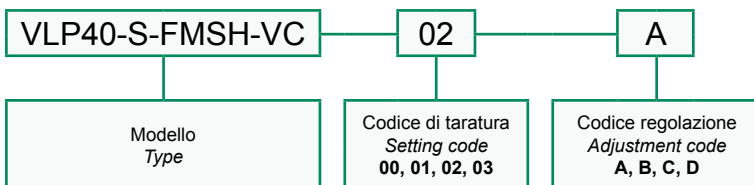
Viscosità consigliate Recommended viscosity	10 ÷ 420 cSt
Temperature di lavoro Working temperature	-20 ÷ +90 °C
Filtrazione assoluta Absolute filtration	25 µ

Regolazioni Adjustments			
A 	B 	C 	D 
Vite esterna esagono incassato Leakproof hex socket screw	Volantino e dado Handknob and locknut	Piombatura Sealing cap	Cappello Cap



Vite cava disponibile a richiesta Nipple screw available upon request	Codice di ordinazione Ordering Code KITV0004
--	---

Sigla di ordinazione / Ordering code

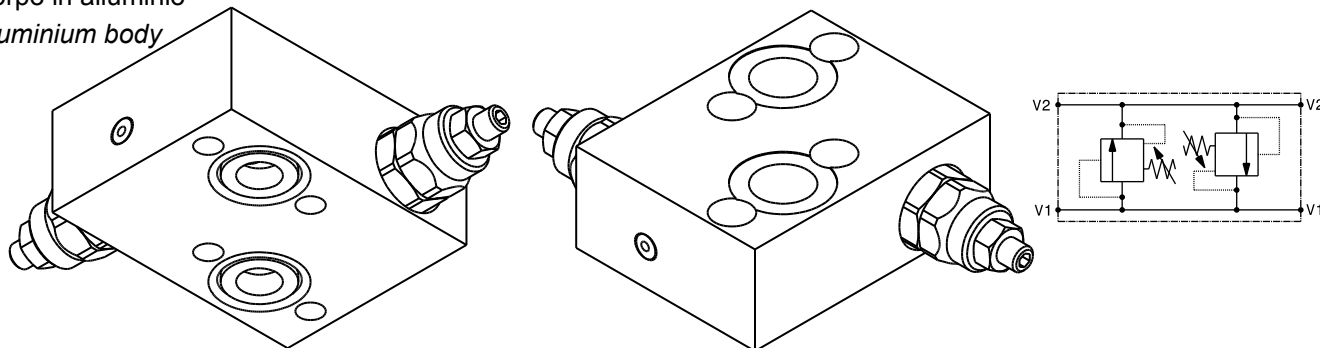


I dati non sono impegnativi, CBF si riserva di apportare modifiche senza preavviso.
 The specifications are not binding, CBF reserves the right to introduce modifications without notice.

Valvola antiurto doppio effetto flangiabile su motori DANFOSS OMP-OMPL-OMR
 Double effect antishock valve, flangeable to DANFOSS OMP-OMPL-OMR motors

mod. VLP40-D-FMD

Corpo in alluminio
 Aluminium body



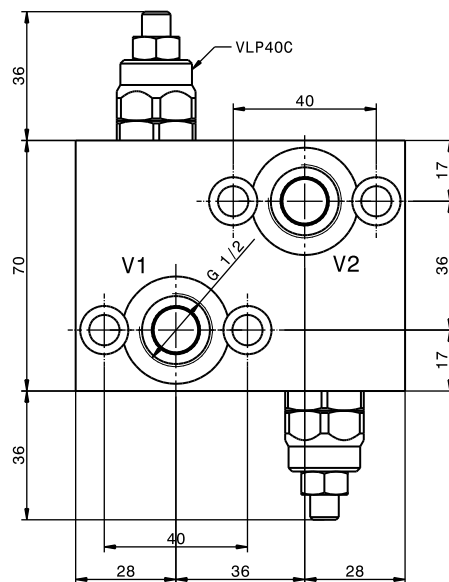
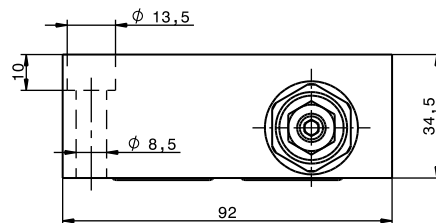
Portata massima Max flow	40 l/min 10.5 gpm
Pressione massima Max pressure	300 bar 4300 psi

Taratura Setting		
Codice Code	Taratura standard Standard setting (Q=5 l/min)	Campo di taratura Adj. Pressure range
00	40 bar 580 psi	5÷40 bar 72.5÷580 psi
01	80 bar 1160 psi	20÷100 bar 290÷1450 psi
02	180 bar 2600 psi	40÷250 bar 580÷3600 psi
03	250 bar 3600 psi	60÷350 bar 870÷5000 psi

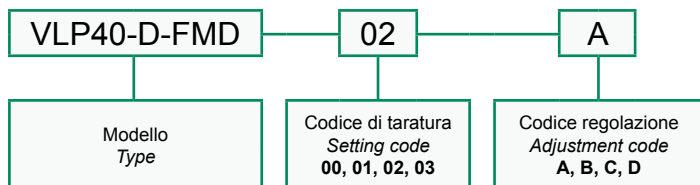
Dati e tarature ottenuti usando olio con viscosità 30 cSt a 50°C
 Performances and calibrations are carried out by using hydraulic oil with 30 cSt viscosity at 50°C

Viscosità consigliate Recommended viscosity	10 ÷ 420 cSt
Temperature di lavoro Working temperature	-20 ÷ +90 °C
Filtrazione assoluta Absolute filtration	25 µ

Regolazioni Adjustments			
A 	B 	C 	D
Vite esterna esagono incassato Leakproof hex socket screw	Volantino e dado Handknob and locknut	Piombatura Sealing cap	Cappello Cap



Sigla di ordinazione / Ordering code

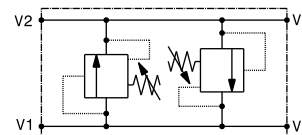
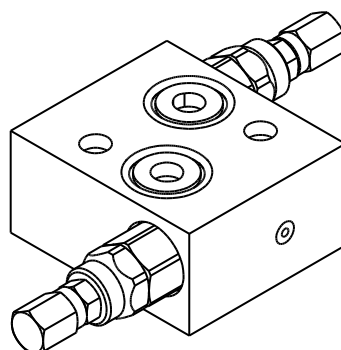
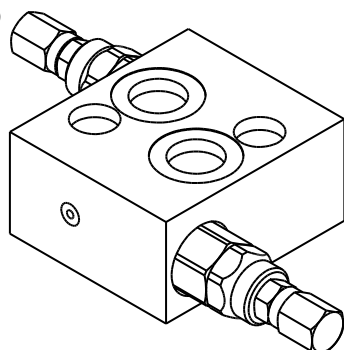


I dati non sono impegnativi, **CBF** si riserva di apportare modifiche senza preavviso.
 The specifications are not binding, **CBF** reserves the right to introduce modifications without notice.

Valvola antiurto doppio effetto flangiabile su motori DANFOSS OMS-OMSW-OMSS
 Double effect antishock valve, flangeable to DANFOSS OMS-OMSW-OMSS motors

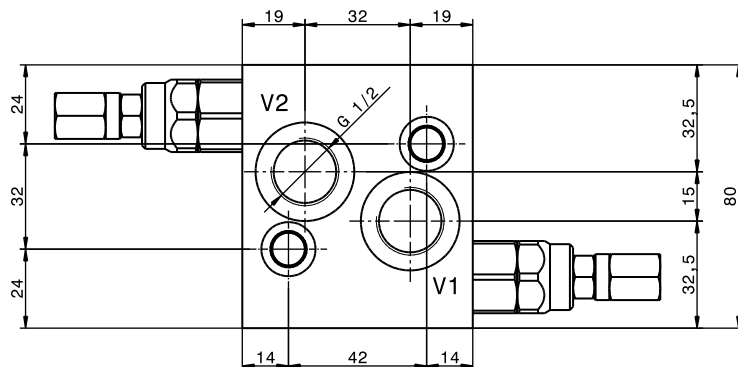
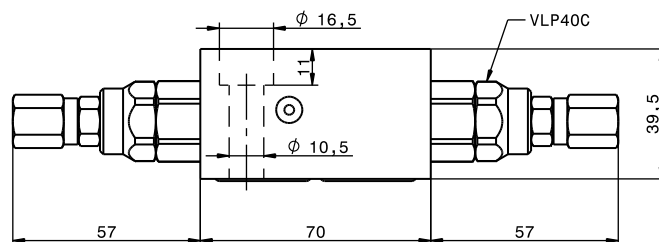
mod. VLP40-D-FMD1

Corpo in alluminio
 Aluminium body



Portata massima Max flow	40 l/min 10.5 gpm
Pressione massima Max pressure	300 bar 4350 psi

Taratura Setting		
Codice Code	Taratura standard Standard setting (Q=5 l/min)	Campo di taratura Adj. Pressure range
00	40 bar 580 psi	5÷40 bar 72.5÷580 psi
01	80 bar 1160 psi	20÷100 bar 290÷1450 psi
02	180 bar 2600 psi	40÷250 bar 580÷3600 psi
03	250 bar 3600 psi	60÷350 bar 870÷5000 psi

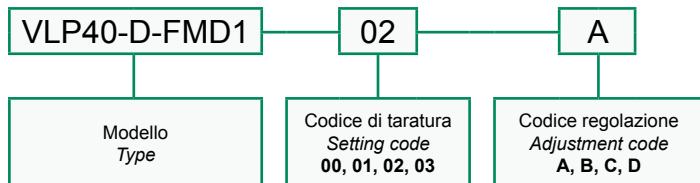


Dati e tarature ottenuti usando olio con viscosità 30 cSt a 50°C
 Performances and calibrations are carried out by using hydraulic oil with 30 cSt viscosity at 50°C

Viscosità consigliate Recommended viscosity	10 ÷ 420 cSt
Temperature di lavoro Working temperature	-20 ÷ +90 °C
Filtrazione assoluta Absolute filtration	25 µ

Regolazioni Adjustments			
A 	B 	C 	D
Vite esterna esagono incassato Leakproof hex socket screw	Volantino e dado Handknob and locknut	Piombatura Sealing cap	Cappello Cap

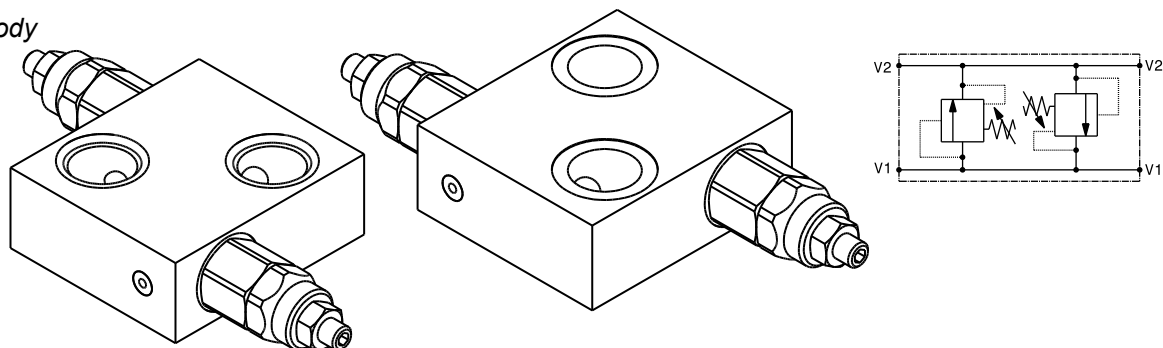
Sigla di ordinazione / Ordering code



I dati non sono impegnativi, CBF si riserva di apportare modifiche senza preavviso.
 The specifications are not binding, CBF reserves the right to introduce modifications without notice.

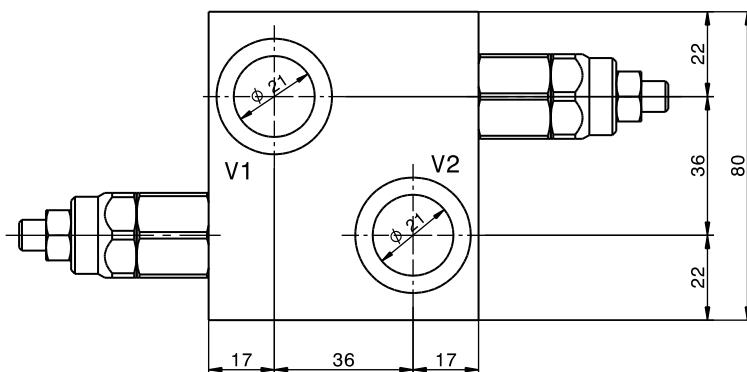
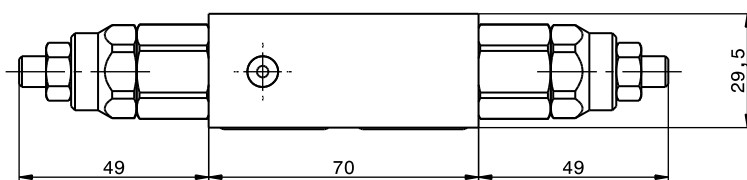
Valvola antiurto doppio effetto flangiabile con vite cava su motori DANFOSS OMP-OMPL-OMR
 Double effect antishock valve, nipple screw flangeable to DANFOSS OMP-OMPL-OMR motors
 mod. VLP40-D-FMD-VC

Corpo in alluminio
 Aluminium body



Portata massima Max flow	40 l/min 10.5 gpm
Pressione massima Max pressure	300 bar 4300 psi

Taratura Setting		
Codice Code	Taratura standard Standard setting (Q=5 l/min)	Campo di taratura Adj. Pressure range
00	40 bar 580 psi	5÷40 bar 72.5÷580 psi
01	80 bar 1160 psi	20÷100 bar 290÷1450 psi
02	180 bar 2600 psi	40÷250 bar 580÷3600 psi
03	250 bar 3600 psi	60÷350 bar 870÷5000 psi



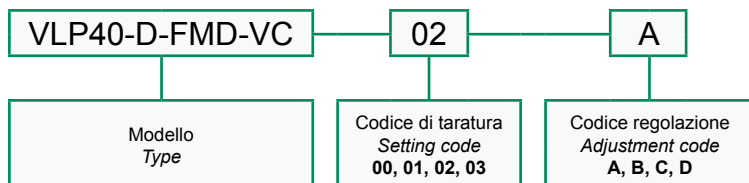
Dati e tarature ottenuti usando olio con viscosità 30 cSt a 50°C
 Performances and calibrations are carried out by using hydraulic oil with 30 cSt viscosity at 50°C

Viscosità consigliate Recommended viscosity	10 ÷ 420 cSt
Temperature di lavoro Working temperature	-20 ÷ +90 °C
Filtrazione assoluta Absolute filtration	25 µ

Regolazioni Adjustments			
A 	B 	C 	D
Vite esterna esagono incassato Leakproof hex socket screw	Volantino e dado Handknob and locknut	Piombatura Sealing cap	Cappello Cap

Vite cava disponibile a richiesta Nipple screw available upon request	Codice di ordinazione Ordering Code KITV0004
--	---

Sigla di ordinazione / Ordering code

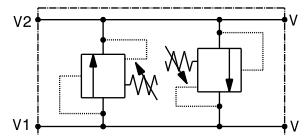
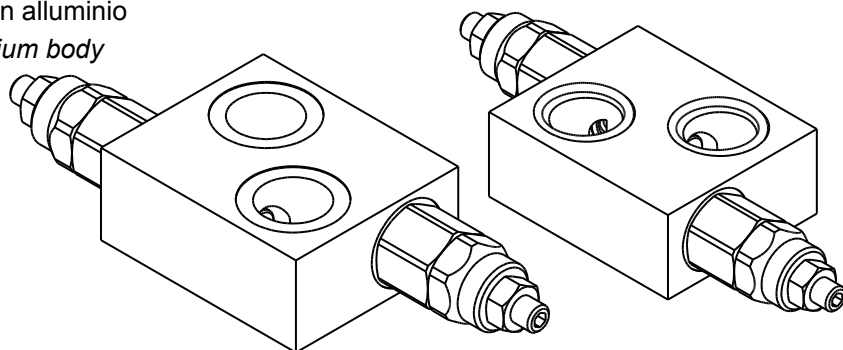


I dati non sono impegnativi, CBF si riserva di apportare modifiche senza preavviso.
 The specifications are not binding, CBF reserves the right to introduce modifications without notice.

Valvola antiurto doppio effetto flangiabile con vite cava su motori DANFOSS OMS-OMSW-OMSS
 Double effect antishock valve, nipple screw flangeable to DANFOSS OMS-OMSW-OMSS motors

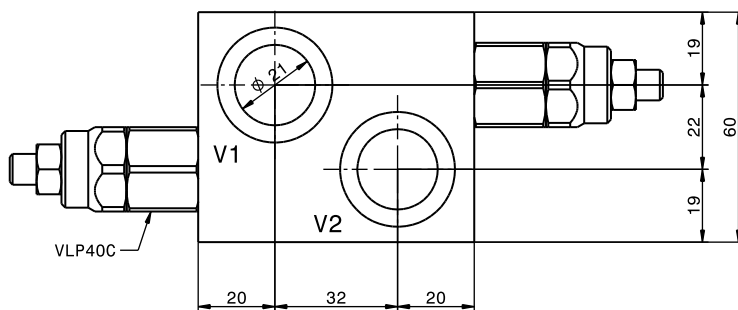
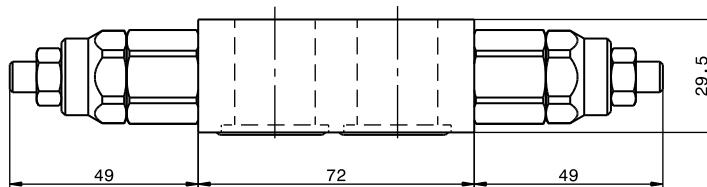
mod. VLP40-D-FMD-VC1

Corpo in alluminio
 Aluminium body



Portata massima Max flow	40 l/min 10.5 gp
Pressione massima Max pressure	300 bar 4300 psi

Taratura Setting		
Codice Code	Taratura standard Standard setting (Q=5 l/min)	Campo di taratura Adj. Pressure range
00	40 bar 580 psi	5÷40 bar 72.5÷580 psi
01	80 bar 1160 psi	20÷100 bar 290÷1450 psi
02	180 bar 2600 psi	40÷250 bar 580÷3600 psi
03	250 bar 3600 psi	60÷350 bar 870÷5000 psi



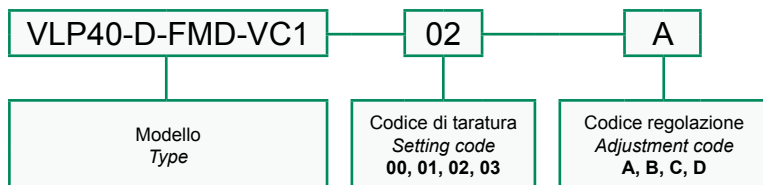
Dati e tarature ottenuti usando olio con viscosità 30 cSt a 50°C
 Performances and calibrations are carried out by using hydraulic oil with 30 cSt viscosity at 50°C

Viscosità consigliate Recommended viscosity	10 ÷ 420 cSt
Temperature di lavoro Working temperature	-20 ÷ +90 °C
Filtrazione assoluta Absolute filtration	25 µ

Regolazioni Adjustments			
A 	B 	C 	D
Vite esterna esagono incassato Leakproof hex socket screw	Volantino e dado Handknob and locknut	Piombatura Sealing cap	Cappello Cap

Vite cava disponibile a richiesta Nipple screw available upon request	Codice di ordinazione Ordering Code KITV0004
--	---

Sigla di ordinazione / Ordering code

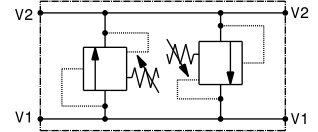
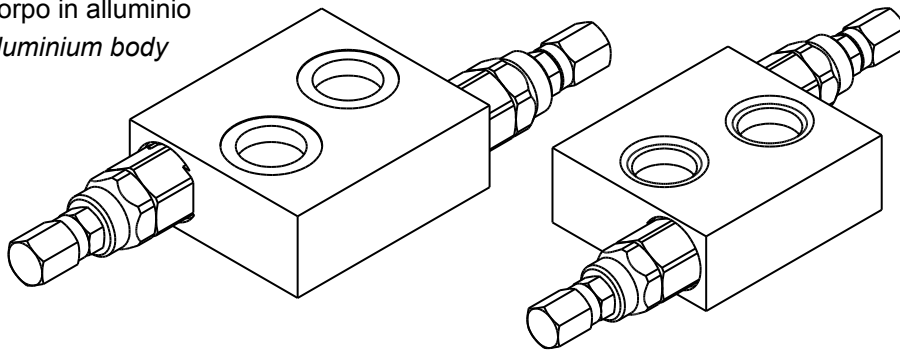


I dati non sono impegnativi, CBF si riserva di apportare modifiche senza preavviso.
 The specifications are not binding, CBF reserves the right to introduce modifications without notice.

Valvola antiurto doppio effetto flangiabile su motori SAMHYDRAULIK AG-AR
 Double effect antishock valve, flangeable to SAMHYDRAULIK AG-AR motors

mod. VLP40-D-FMSH-VC

Corpo in alluminio
 Aluminium body



Portata massima Max flow	40 l/min 10.5 gpm
Pressione massima Max pressure	300 bar 4350 psi

Taratura
Setting

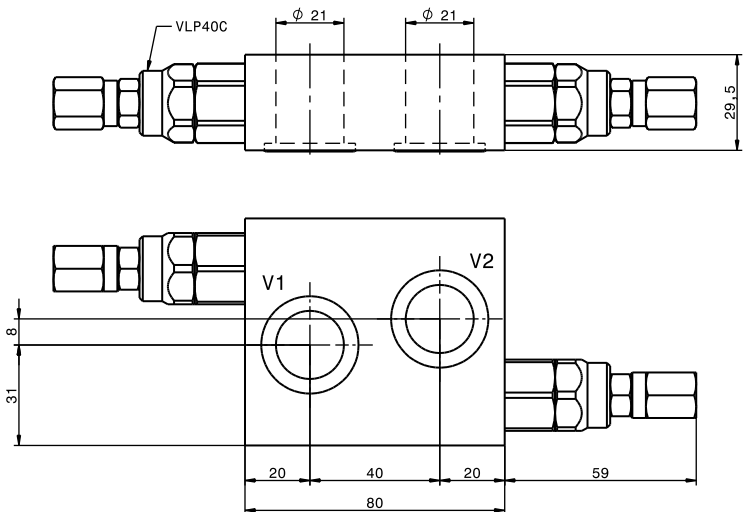
Codice Code	Taratura standard Standard setting (Q=5 l/min)	Campo di taratura Adj. Pressure range
00	40 bar 580 psi	5÷40 bar 72.5÷580 psi
01	80 bar 1160 psi	20÷100 bar 290÷1450 psi
02	180 bar 2600 psi	40÷250 bar 580÷3600 psi
03	250 bar 3600 psi	60÷350 bar 870÷5000 psi

Dati e tarature ottenuti usando olio con viscosità 30 cSt a 50°C
 Performances and calibrations are carried out by using hydraulic oil with 30 cSt viscosity at 50°C

Viscosità consigliate Recommended viscosity	10 ÷ 420 cSt
Temperature di lavoro Working temperature	-20 ÷ +90 °C
Filtrazione assoluta Absolute filtration	25 µ

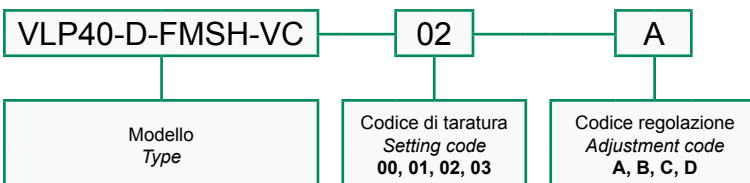
Regolazioni
Adjustments

A Vite esterna esagono incassato Leakproof hex socket screw	B Volantino e dado Handknob and locknut	C Piombatura Sealing cap	D Cappello Cap
--	---	---	---------------------------------



Vite cava disponibile a richiesta Nipple screw available upon request	Codice di ordinazione Ordering Code
	KITV0004

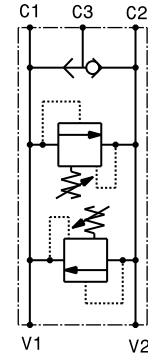
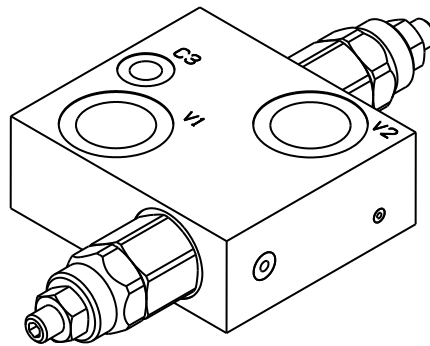
Sigla di ordinazione / Ordering code



I dati non sono impegnativi, **CBF** si riserva di apportare modifiche senza preavviso.
 The specifications are not binding, **CBF** reserves the right to introduce modifications without notice.

Valvola antiurto doppio effetto flangiabile con vite cava su motori DANFOSS OMP-OMPL-OMR con sblocco freno
 Double effect antishock valve with brake unclamping, nipple screw flangeable to DANFOSS OMP-OMPL-OMR motors
 mod. VLP40-D-FMD-SF-VC

Corpo in alluminio
 Aluminium body



Portata massima Max flow	40 l/min 10.5 gpm
Pressione massima Max pressure	300 bar 4350 psi

Taratura
 Setting

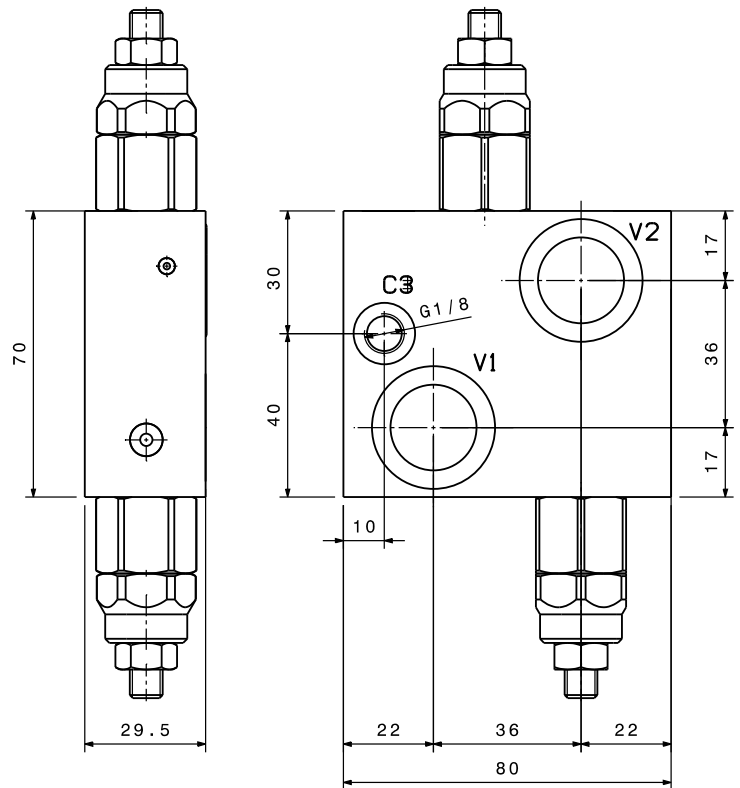
Codice Code	Taratura standard Standard setting (Q=5 l/min)	Campo di taratura Adj. Pressure range
00	40 bar 580 psi	5÷40 bar 72.5÷580 psi
01	80 bar 1160 psi	20÷100 bar 290÷1450 psi
02	180 bar 2600 psi	40÷250 bar 580÷3600 psi
03	250 bar 3600 psi	60÷350 bar 870÷5000 psi

Dati e tarature ottenuti usando olio con viscosità 30 cSt a 50°C
 Performances and calibrations are carried out by using hydraulic oil with 30 cSt viscosity at 50°C

Viscosità consigliate Recommended viscosity	10 ÷ 420 cSt
Temperature di lavoro Working temperature	-20 ÷ +90 °C
Filtrazione assoluta Absolute filtration	25 µ

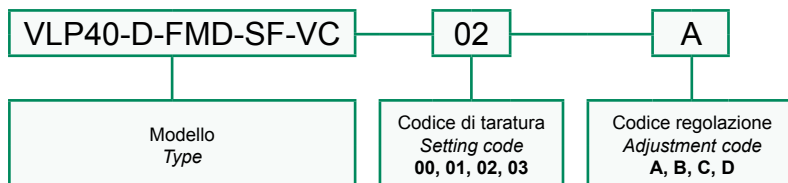
Regolazioni
 Adjustments

A 	B 	C 	D
--------------	--------------	--------------	--------------



Vite cava disponibile a richiesta
 Nipple screw available upon request
 Codice di ordinazione
 Ordering Code
KITV0004

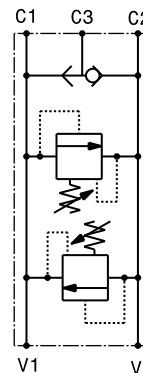
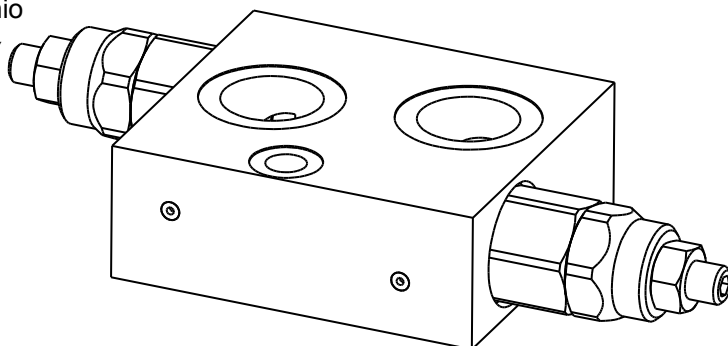
Sigla di ordinazione / Ordering code



I dati non sono impegnativi, CBF si riserva di apportare modifiche senza preavviso.
 The specifications are not binding, CBF reserves the right to introduce modifications without notice.

Valvola antiurto doppio effetto flangiabile su motori SAMHYDRAULIK AG-AR con sblocco freno
 Double effect antishock valve with brake unclamping, flangeable to SAMHYDRAULIK AG-AR motors
 mod. VLP40-D-FMSH-SF-VC

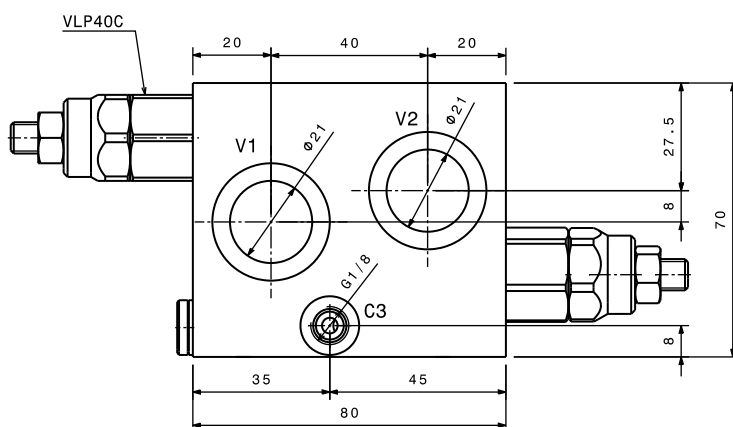
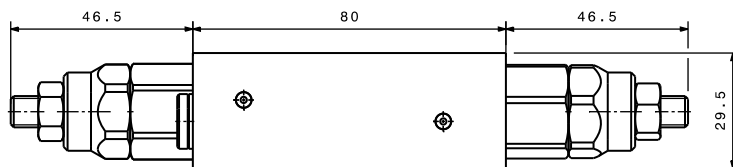
Corpo in alluminio
 Aluminium body



Portata massima Max flow	40 l/min 10.5 gpm
Pressione massima Max pressure	300 bar 4350 psi

Taratura Setting		
Codice Code	Taratura standard Standard setting (Q=5 l/min)	Campo di taratura Adj. Pressure range
00	40 bar 580 psi	5÷40 bar 72.5÷580 psi
01	80 bar 1160 psi	20÷100 bar 290÷1450 psi
02	180 bar 2600 psi	40÷250 bar 580÷3600 psi
03	250 bar 3600 psi	60÷350 bar 870÷5000 psi

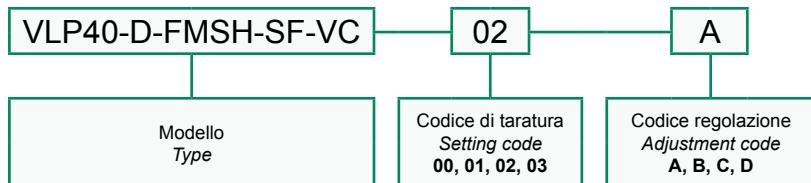
Dati e tarature ottenuti usando olio con viscosità 30 cSt a 50°C Performances and calibrations are carried out by using hydraulic oil with 30 cSt viscosity at 50°C	
Viscosità consigliate Recommended viscosity	10 ÷ 420 cSt
Temperature di lavoro Working temperature	-20 ÷ +90 °C
Filtrazione assoluta Absolute filtration	25 µ



Regolazioni Adjustments			
A Vite esterna esagono incassato Leakproof hex socket screw	B Volantino e dado Handknob and locknut	C Piombatura Sealing cap	D Cappello Cap

Vite cava disponibile a richiesta Nipple screw available upon request	Codice di ordinazione Ordering Code KITV0004
--	---

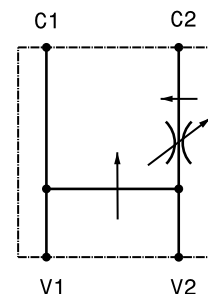
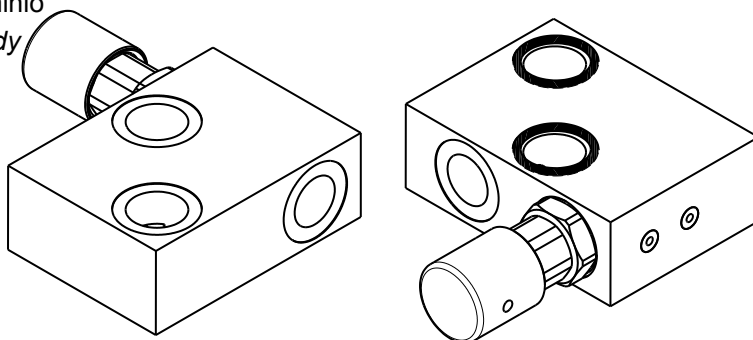
Sigla di ordinazione / Ordering code



I dati non sono impegnativi, CBF si riserva di apportare modifiche senza preavviso.
 The specifications are not binding, CBF reserves the right to introduce modifications without notice.

Valvola regolatrice di flusso a tre vie prioritaria flangiabile su motori DANFOSS OMP-OMPL-OMR
 Three ways priority flow regulator, flangeable to DANFOSS OMP-OMPL-OMR motors
 mod. RFP50-FMD-VC-12

Corpo in alluminio
 Aluminium body

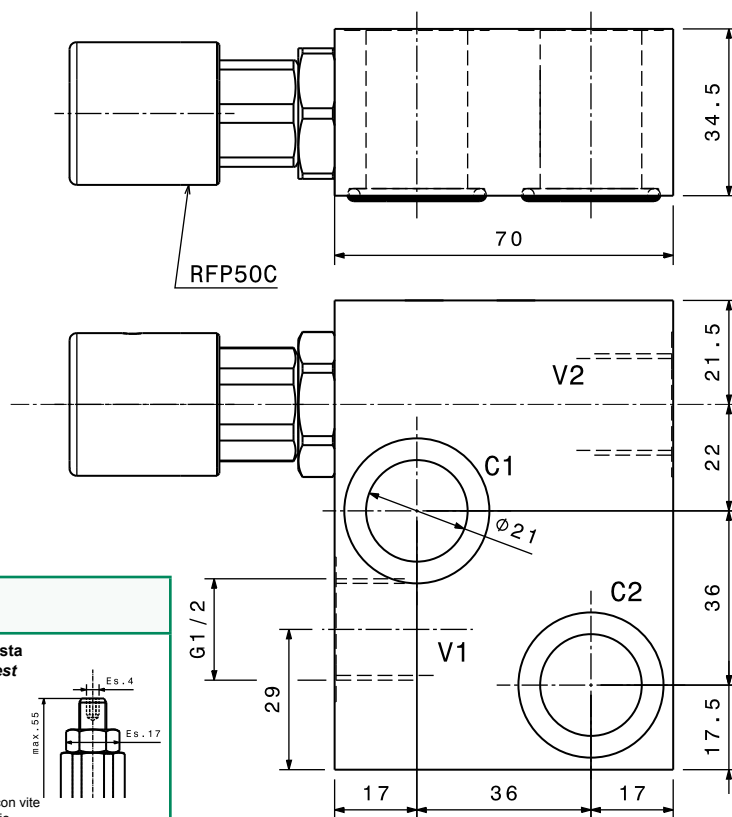


Portata massima Max flow	40 l/min 10.5 gpm
Pressione massima Max pressure	300 bar 4300 psi
Portata regolata Regulated flow	0 ÷ 25 l/min 0 ÷ 6.6 gpm

Dati e tarature ottenuti usando olio con viscosità 30 cSt a 50°C
 Performances and calibrations are carried out by using hydraulic oil with 30 cSt viscosity at 50°C

Viscosità consigliate Recommended viscosity	10 ÷ 420 cSt
Temperature di lavoro Working temperature	-20 ÷ +90 °C
Filtrazione assoluta Absolute filtration	25 µ

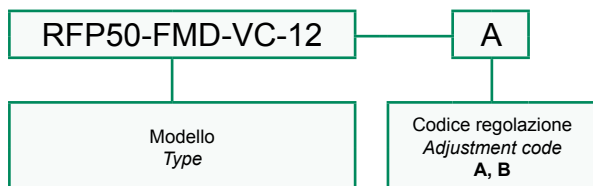
Vite cava disponibile a richiesta Nipple screw available upon request	Codice di ordinazione Ordering Code
	KITV0006



Regolazioni
 Adjustments

A	B	Su richiesta On request
Manopola con vite di bloccaggio Handknob with locking screw	Manopola Handknob	Manopola con vite di bloccaggio Handknob with locking screw

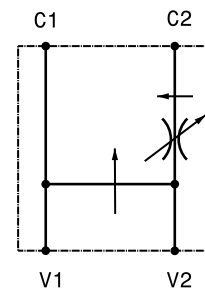
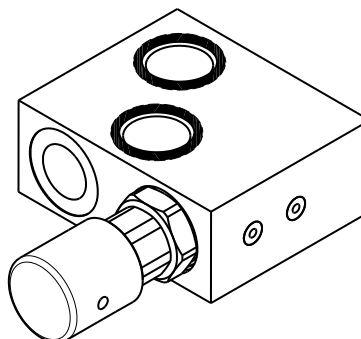
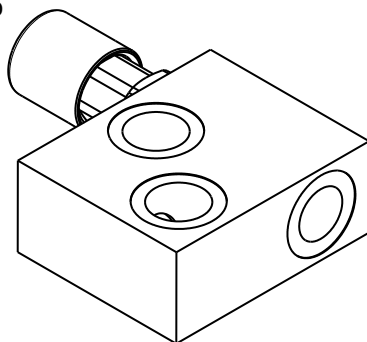
Sigla di ordinazione / Ordering code



I dati non sono impegnativi, **CBF** si riserva di apportare modifiche senza preavviso.
 The specifications are not binding, **CBF** reserves the right to introduce modifications without notice.

Valvola regolatrice di flusso a tre vie prioritaria flangiabile su motori DANFOSS OMS-OMSW-OMSS
 Three ways priority flow regulator, flangeable to DANFOSS OMS-OMSW-OMSS motors
 mod. RFP50-FMD-VC-121

Corpo in alluminio
 Aluminium body

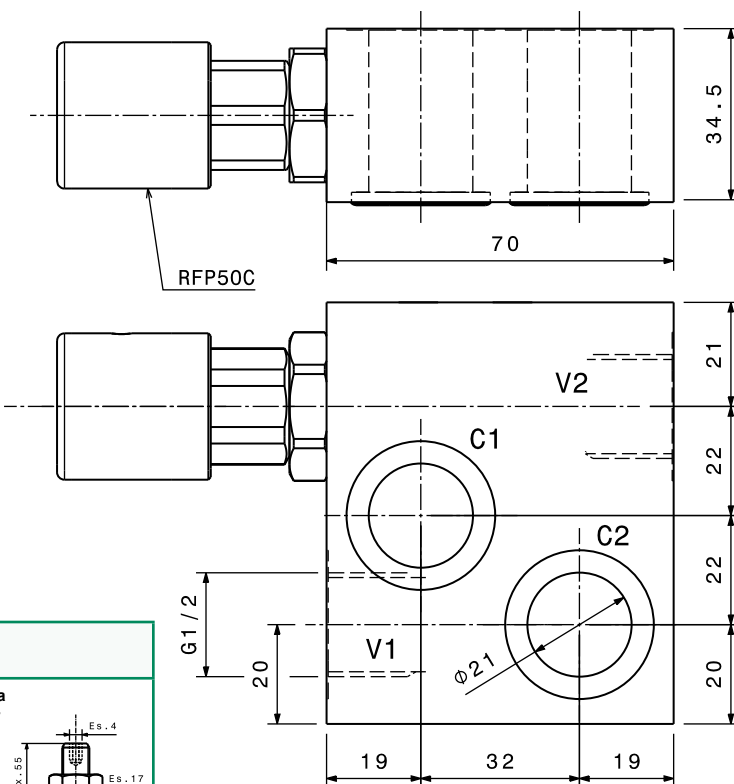


Portata massima Max flow	40 l/min 10.5 gpm
Pressione massima Max pressure	300 bar 4300 psi
Portata regolata Regulated flow	0 ÷ 25 l/min 0 ÷ 6.6 gpm

Dati e tarature ottenuti usando olio con viscosità 30 cSt a 50°C
 Performances and calibrations are carried out by using hydraulic oil with 30 cSt viscosity at 50°C

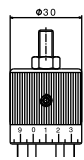
Viscosità consigliate Recommended viscosity	10 ÷ 420 cSt
Temperature di lavoro Working temperature	-20 ÷ +90 °C
Filtrazione assoluta Absolute filtration	25 µ

Vite cava disponibile a richiesta Nipple screw available upon request	Codice di ordinazione Ordering Code
	KITV0006

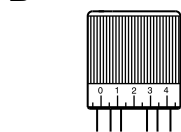


Regolazioni
 Adjustments

A
 Manopola con vite
 di bloccaggio
 Handknob with
 locking screw

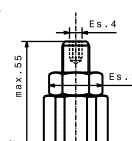


B



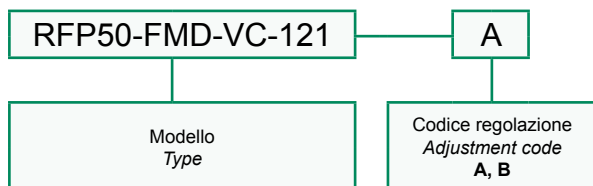
Manopola
 Handknob

Su richiesta
 On request



Manopola con vite
 di bloccaggio
 Handknob with
 locking screw

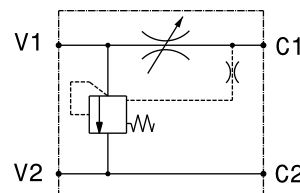
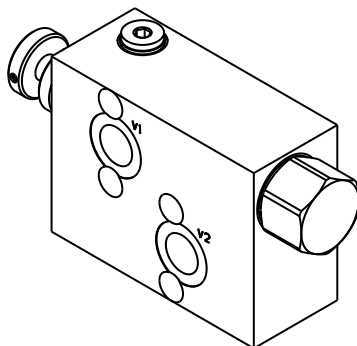
Sigla di ordinazione / Ordering code



I dati non sono impegnativi, **CBF** si riserva di apportare modifiche senza preavviso.
 The specifications are not binding, **CBF** reserves the right to introduce modifications without notice.

Valvola regolatrice di flusso flangiabile su motori DANFOSS OMP-OMPL-OMR
 Three ways flow regulator valve, flangeable to DANFOSS OMP-OMPL-OMR
 mod. RFA-FMD-12

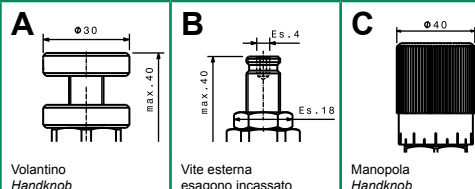
Corpo in alluminio
 Aluminium body



Portata massima Max flow	100 l/min 26 gpm
Pressione massima Max pressure	270 bar 3900 psi

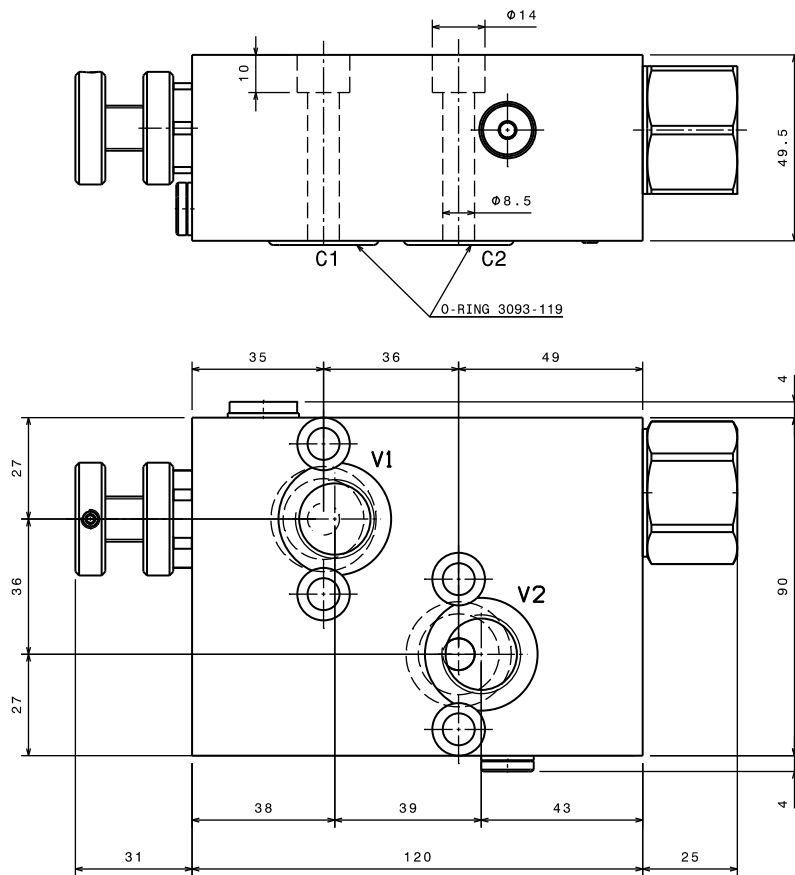
Modello Type	Portata regolata Regulated flow
RFA-FMD-12	0 ÷ 60 l/min 0 ÷ 16 gpm
RFA-FMD-30-12	0 ÷ 30 l/min 0 ÷ 8 gpm

Regolazioni
 Adjustments

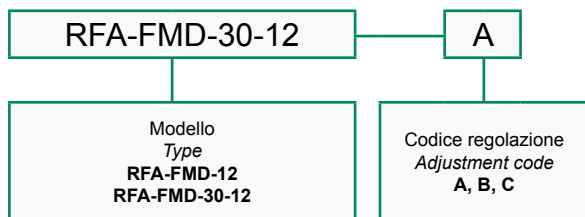


Dati e tarature ottenuti usando olio con viscosità 30 cSt a 50°C
 Performances and calibrations are carried out by using hydraulic oil with 30 cSt viscosity at 50°C

Viscosità consigliate Recommended viscosity	10 ÷ 420 cSt
Temperature di lavoro Working temperature	-20 ÷ +90 °C
Filtrazione assoluta Absolute filtration	25 µ



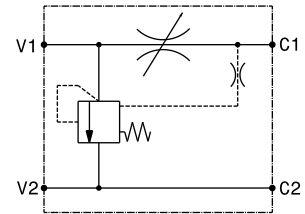
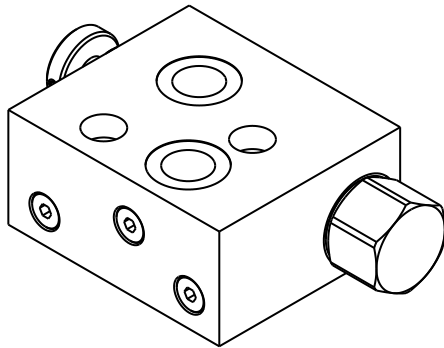
Sigla di ordinazione / Ordering code



I dati non sono impegnativi, **CBF** si riserva di apportare modifiche senza preavviso.
 The specifications are not binding, **CBF** reserves the right to introduce modifications without notice.

Valvola regolatrice di flusso flangiabile su motori DANFOSS OMS-OMSW-OMSS
 Three ways flow regulator valve, flangeable to DANFOSS OMS-OMSW-OMSS motors
 mod. RFA-FMD-121

Corpo in alluminio
 Aluminium body



Portata massima Max flow	100 l/min 26 gpm
Pressione massima Max pressure	270 bar 3900 psi

Modello Type	Portata regolata Regulated flow
RFA-FMD-121	0 ÷ 60 l/min 0 ÷ 16 gpm
RFA-FMD-30-121	0 ÷ 30 l/min 0 ÷ 8 gpm

Regolazioni
Adjustments

A

Volantino
Handknob

B

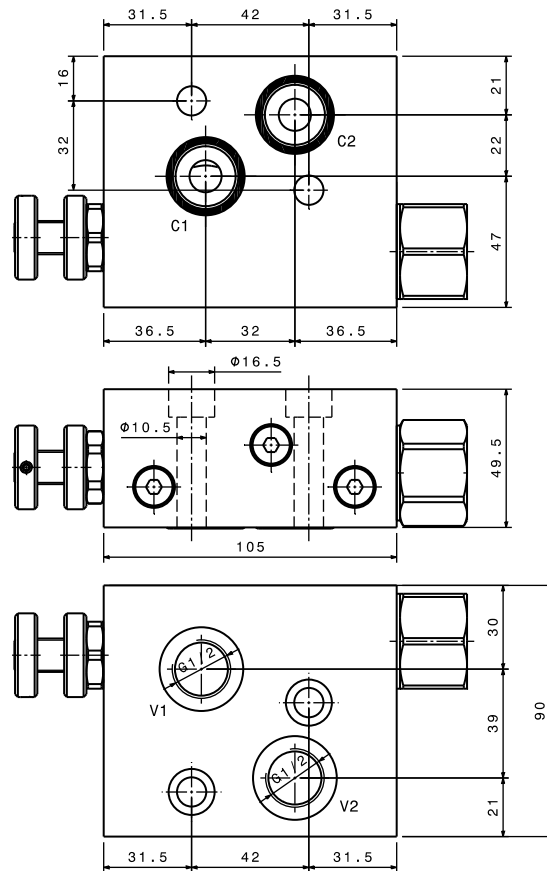
Vite esterna
esagono incassato
Leakproof hex socket
screw

C

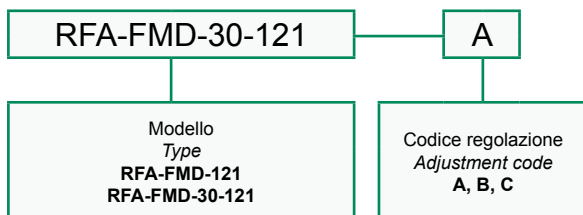
Manopola
Handknob

Dati e tarature ottenuti usando olio con viscosità 30 cSt a 50°C
 Performances and calibrations are carried out by using hydraulic oil
 with 30 cSt viscosity at 50°C

Viscosità consigliate Recommended viscosity	10 ÷ 420 cSt
Temperature di lavoro Working temperature	-20 ÷ +90 °C
Filtrazione assoluta Absolute filtration	25 µ



Sigla di ordinazione / Ordering code

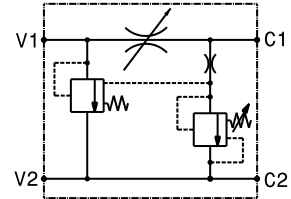
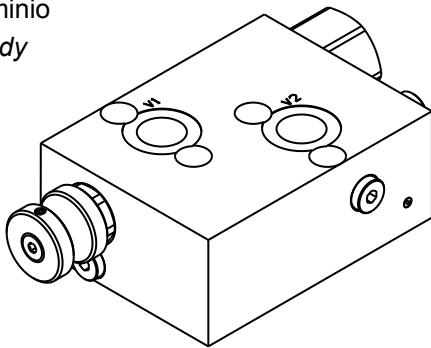


I dati non sono impegnativi, **CBF** si riserva di apportare modifiche senza preavviso.
 The specifications are not binding, **CBF** reserves the right to introduce modifications without notice.

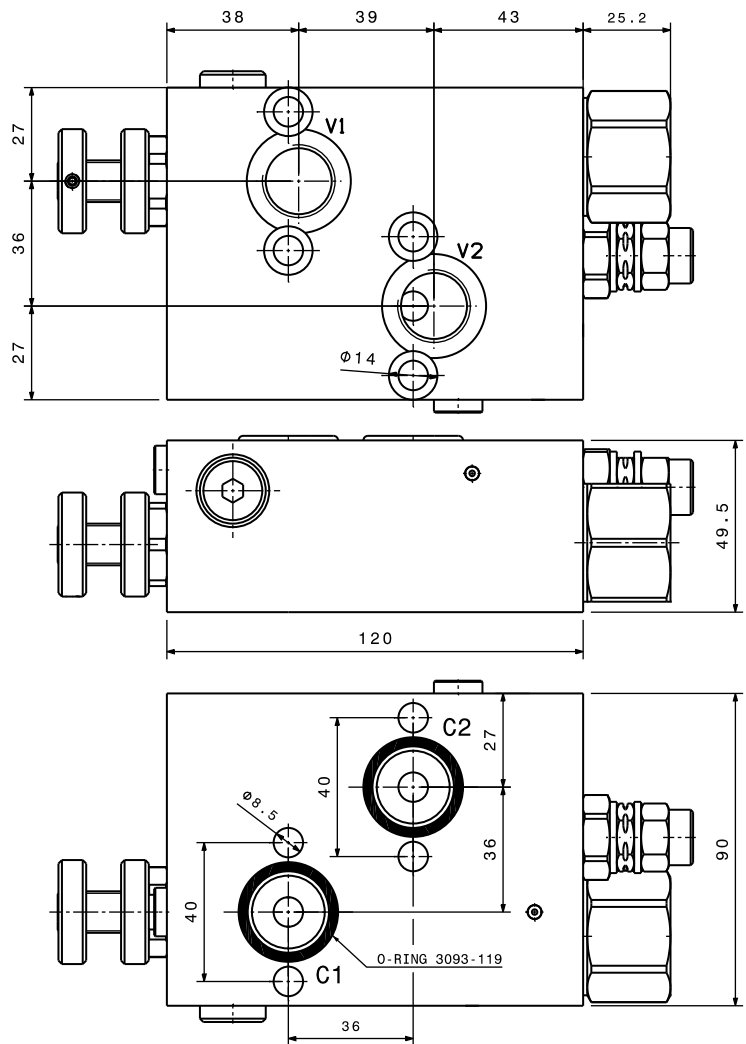
Valvola regolatrice di flusso, con VLP, flangiabile su motori DANFOSS OMP-OMPL-OMR
 Three ways flow regulator valve, with VLP, flangeable to DANFOSS OMP-OMPL-OMR motors

mod. RFA-VLP10-FMD-12

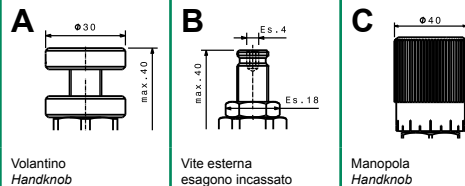
Corpo in alluminio
 Aluminium body



Portata massima Max flow	100 l/min 26 gpm
Pressione massima Max pressure	270 bar 3900 psi
Modello Type	Portata regolata Regulated flow
RFA-VLP10-FMD-12	0 ÷ 60 l/min 0 ÷ 16 gpm



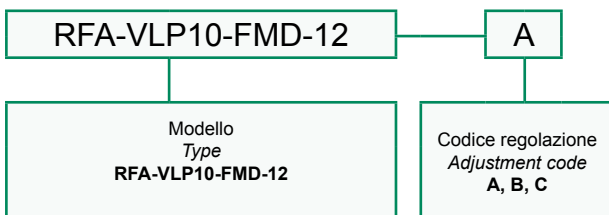
Regolazioni
 Adjustments



Dati e tarature ottenuti usando olio con viscosità 30 cSt a 50°C
 Performances and calibrations are carried out by using hydraulic oil with 30 cSt viscosity at 50°C

Viscosità consigliate Recommended viscosity	10 ÷ 420 cSt
Temperature di lavoro Working temperature	-20 ÷ +90 °C
Filtrazione assoluta Absolute filtration	25 µ

Sigla di ordinazione / Ordering code

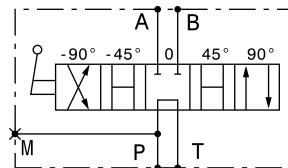
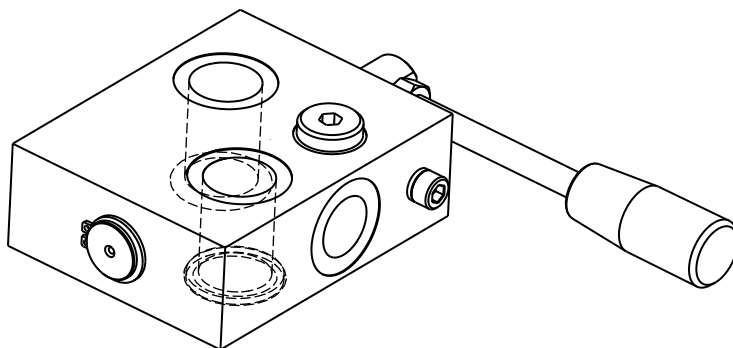


I dati non sono impegnativi, CBF si riserva di apportare modifiche senza preavviso.
 The specifications are not binding, CBF reserves the right to introduce modifications without notice.

Rotodeviatore flangiabile su motori DANFOSS OMP-OMPL-OMR
 Rotating distributor, flangeable to DANFOSS OMP-OMPL-OMR motors

mod. RTD-FMD-VC-12

Corpo in alluminio
 Aluminium body



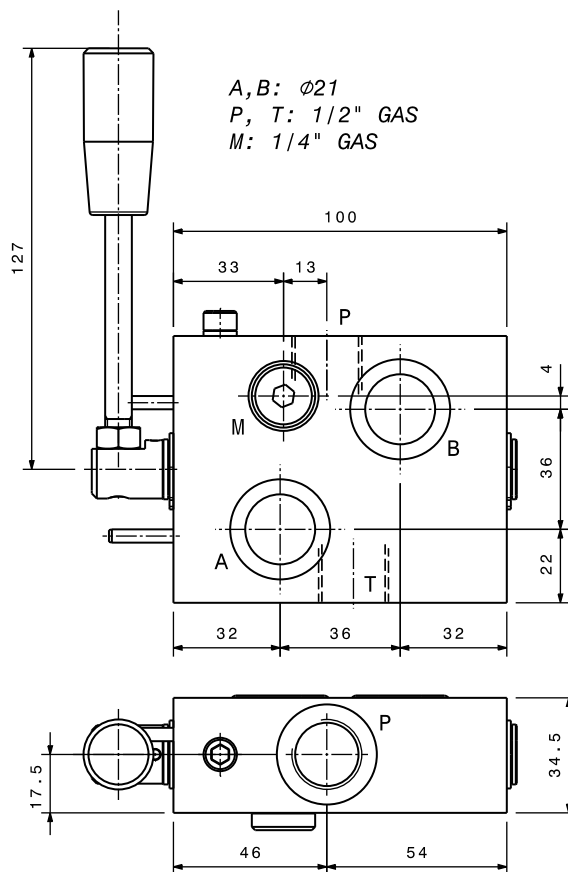
Portata massima Max flow	60 l/min 16 gpm
Pressione massima Max pressure	300 bar 4300 psi

Dati e tarature ottenuti usando olio con viscosità 30 cSt a 50°C
 Performances and calibrations are carried out by using hydraulic oil with 30 cSt viscosity at 50°C

Viscosità consigliate Recommended viscosity	10 ÷ 420 cSt
Temperature di lavoro Working temperature	-20 ÷ +90 °C
Filtrazione assoluta Absolute filtration	25 µ

Vite cava disponibile a richiesta Nipple screw available upon request	Codice di ordinazione Ordering Code
	KITV0006

Coppia di serraggio Installation torque	65 ÷ 70 Nm 49 ÷ 53 lb ft
--	-----------------------------



Sigla di ordinazione / Ordering code

RTD-FMD-VC-12

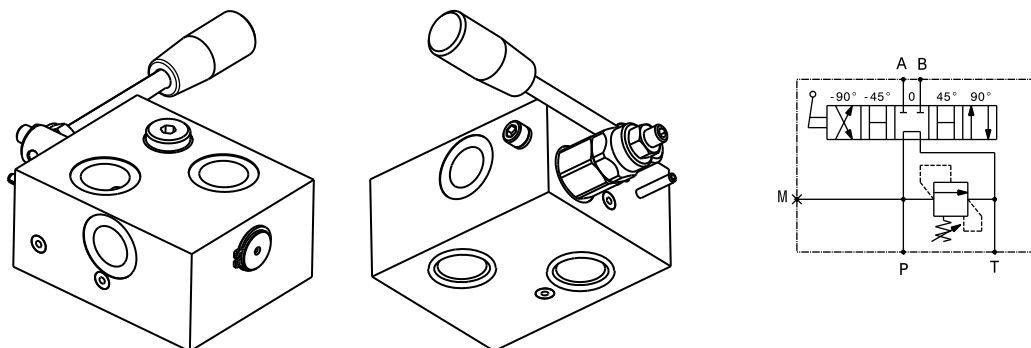
Modello
 Type

I dati non sono impegnativi, **CBF** si riserva di apportare modifiche senza preavviso.
 The specifications are not binding, **CBF** reserves the right to introduce modifications without notice.

Rotodeviatore con valvola limitatrice di pressione flangiabile su motori DANFOSS OMP-OMPL-OMR
 Rotating distributor with relief valve, flangeable to DANFOSS OMP-OMPL-OMR motors

mod. RTD-FMD-VC-VLP40-12

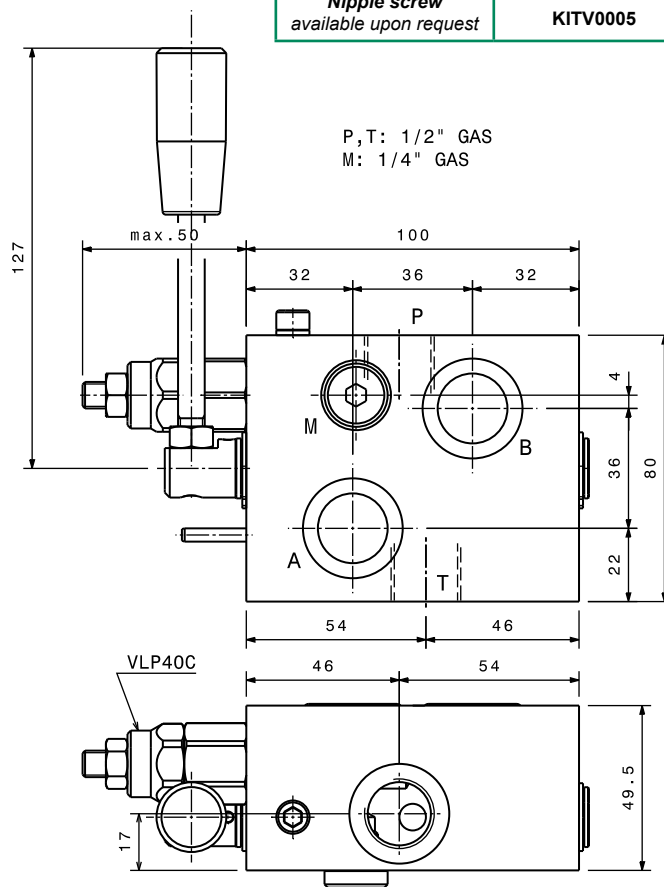
Corpo in alluminio
 Aluminium body



Portata massima Max flow	60 l/min 16 gpm
Pressione massima Max pressure	300 bar 4350 psi

Vite cava disponibile a richiesta Nipple screw available upon request	Codice di ordinazione Ordering Code
	KITV0005

Taratura Setting		
Codice Code	Taratura standard Standard setting (Q=5 l/min)	Campo di taratura Adj. Pressure range
00	40 bar 580 psi	5÷40 bar 72.5÷580 psi
01	80 bar 1160 psi	20÷100 bar 290÷1450 psi
02	180 bar 2600 psi	40÷250 bar 580÷3600 psi
03	250 bar 3600 psi	60÷350 bar 870÷5000 psi

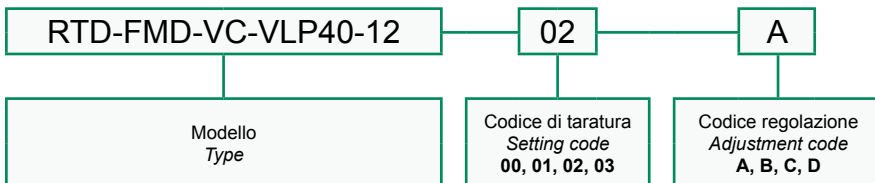


Dati e tarature ottenuti usando olio con viscosità 30 cSt a 50°C
 Performances and calibrations are carried out by using hydraulic oil with 30 cSt viscosity at 50°C

Viscosità consigliate Recommended viscosity	10 ÷ 420 cSt
Temperature di lavoro Working temperature	-20 ÷ +90 °C
Filtrazione assoluta Absolute filtration	25 µ

Regolazioni Adjustments			
A 	B 	C 	D
Vite esterna esagono incassato Leakproof hex socket screw	Volantino e dado Handknob and locknut	Piombatura Sealing cap	Cappellino Cap

Sigla di ordinazione / Ordering code



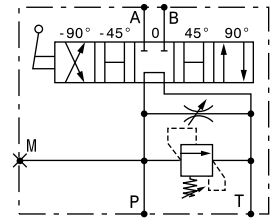
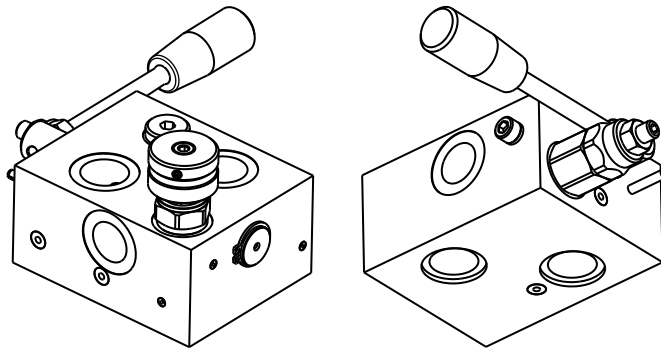
Coppia di serraggio Installation torque	80 ÷ 90 Nm 60 ÷ 67 lb ft
--	-----------------------------

I dati non sono impegnativi, **CBF** si riserva di apportare modifiche senza preavviso.
 The specifications are not binding, **CBF** reserves the right to introduce modifications without notice.

Rotodeviatore con valvola limitatrice di pressione e strozzatore flangiabile su motori DANFOSS OMP-OMPL-OMR
 Rotating distributor with relief and needle valve, flangeable to DANFOSS OMP-OMPL-OMR motors

mod. RTD-FMD-VC-VLP40-ST-12

Corpo in alluminio
 Aluminium body



Portata massima Max flow	60 l/min 16 gpm
Pressione massima Max pressure	300 bar 4300 psi

Vite cava disponibile a richiesta Nipple screw available upon request	Codice di ordinazione Ordering Code KITV0005
---	---

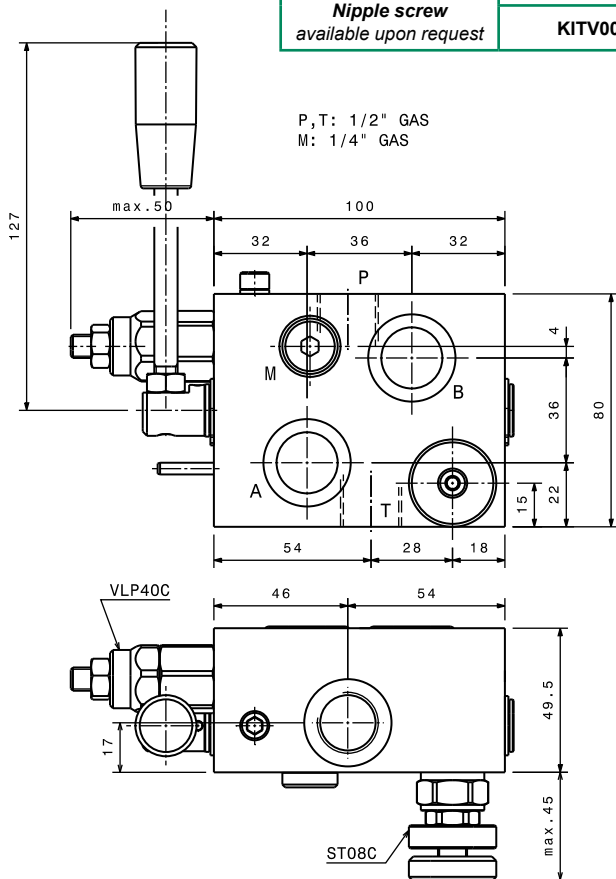
Taratura Setting		
Codice Code	Taratura standard Standard setting (Q=5 l/min)	Campo di taratura Adj. Pressure range
00	40 bar 580 psi	5÷40 bar 72.5÷580 psi
01	80 bar 1160 psi	20÷100 bar 290÷1450 psi
02	180 bar 2600 psi	40÷250 bar 580÷3600 psi
03	250 bar 3600 psi	60÷350 bar 870÷5000 psi

Dati e tarature ottenuti usando olio con viscosità 30 cSt a 50°C
 Performances and calibrations are carried out by using hydraulic oil with 30 cSt viscosity at 50°C

Viscosità consigliate Recommended viscosity	10 ÷ 420 cSt
Temperature di lavoro Working temperature	-20 ÷ +90 °C
Filtrazione assoluta Absolute filtration	25 µ

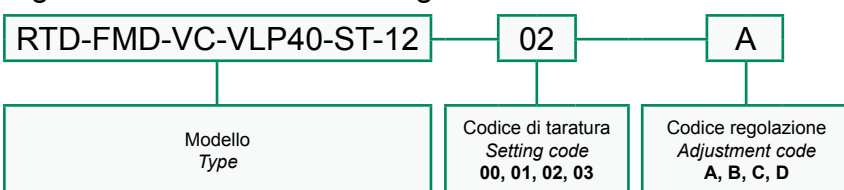
Regolazioni
 Adjustments

A 	B 	C 	D
Vite esterna esagono incassato Leakproof hex socket screw	Volantino e dado Handknob and locknut	Piombatura Sealing cap	Cappellotto Cap



Coppia di serraggio Installation torque	80 ÷ 90 Nm 60 ÷ 67 lb ft
--	-----------------------------

Sigla di ordinazione / Ordering code

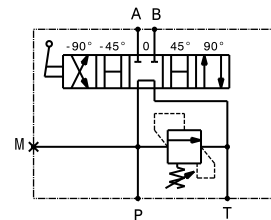
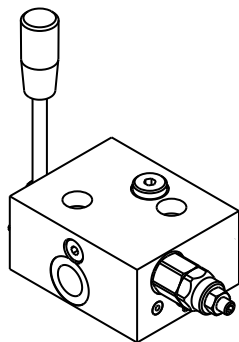


I dati non sono impegnativi, CBF si riserva di apportare modifiche senza preavviso.
 The specifications are not binding, CBF reserves the right to introduce modifications without notice.

Rotodeviatore con valvola limitatrice di pressione flangiabile su motori DANFOSS OMS-OMSW-OMSS
 Rotating distributor with relief valve, flangeable to DANFOSS OMS-OMSW-OMSS motors

mod. RTD-FMD-VLP40-121

Corpo in alluminio
 Aluminium body



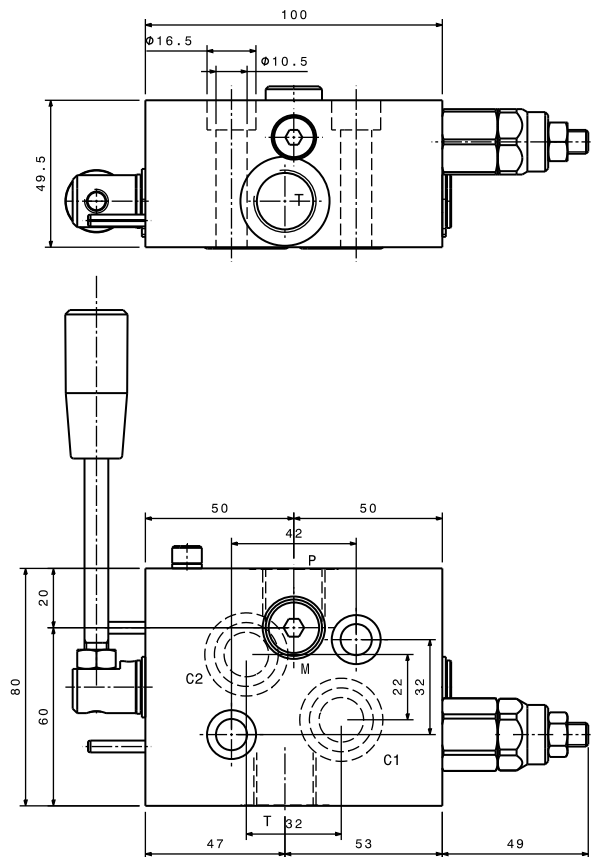
Portata massima Max flow	40 l/min 10.5 gpm
Pressione massima Max pressure	300 bar 4300 psi

Taratura Setting		
Codice Code	Taratura standard Standard setting (Q=5 l/min)	Campo di taratura Adj. Pressure range
00	40 bar 580 psi	5÷40 bar 72.5÷580 psi
01	80 bar 1160 psi	20÷100 bar 290÷1450 psi
02	180 bar 2600 psi	40÷250 bar 580÷3600 psi
03	250 bar 3600 psi	60÷350 bar 870÷5000 psi

Dati e tarature ottenuti usando olio con viscosità 30 cSt a 50°C
 Performances and calibrations are carried out by using hydraulic oil with 30 cSt viscosity at 50°C

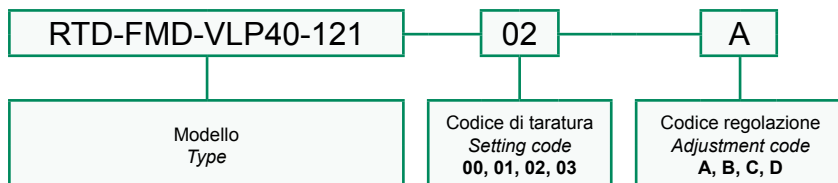
Viscosità consigliate Recommended viscosity	10 ÷ 420 cSt
Temperature di lavoro Working temperature	-20 ÷ +90 °C
Filtrazione assoluta Absolute filtration	25 µ

Regolazioni Adjustments			
A 	B 	C 	D
Vite esterna esagono incassato Leakproof hex socket screw	Volantino e dado Handknob and locknut	Piombatura Sealing cap	Cappellotto Cap



Coppia di serraggio Installation torque	80 ÷ 90 Nm 60 ÷ 67 lb ft
--	-----------------------------

Sigla di ordinazione / Ordering code

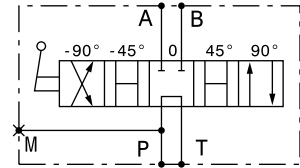
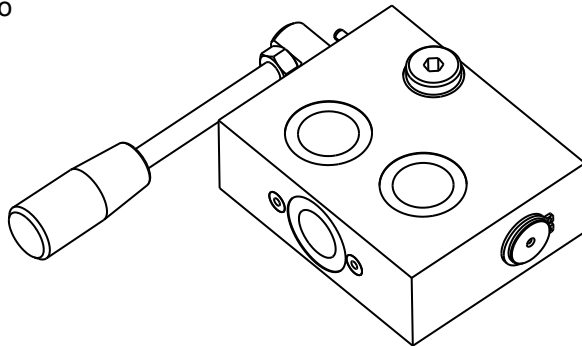


I dati non sono impegnativi, **CBF** si riserva di apportare modifiche senza preavviso.
 The specifications are not binding, **CBF** reserves the right to introduce modifications without notice.

Rotodeviatore flangiabile su motori SAMHYDRAULIK AG-AR
 Rotating distributor, flangeable to SAMHYDRAULIK AG-AR motors

mod. RTD-FMSH-VC-12

Corpo in alluminio
 Aluminium body



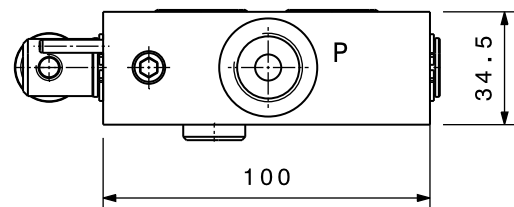
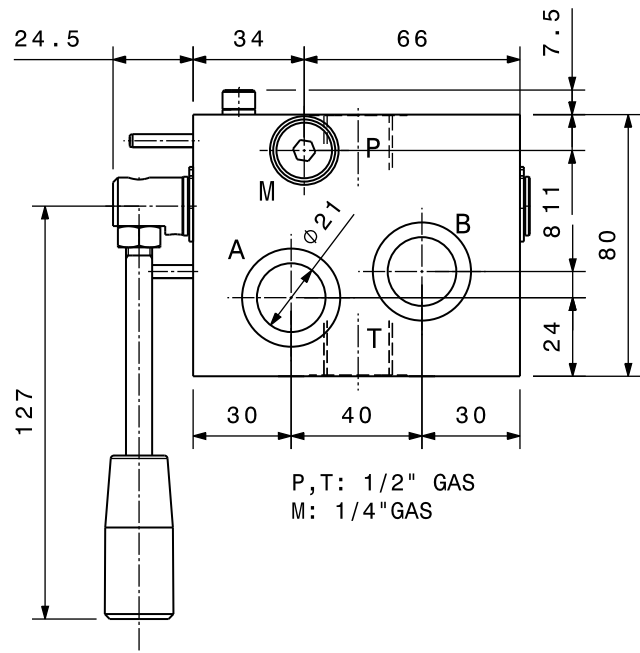
Portata massima Max flow	60 l/min 16 gpm
Pressione massima Max pressure	300 bar 4300 psi

Dati e tarature ottenuti usando olio con viscosità 30 cSt a 50°C
 Performances and calibrations are carried out by using hydraulic oil with 30 cSt viscosity at 50°C

Viscosità consigliate Recommended viscosity	10 ÷ 420 cSt
Temperature di lavoro Working temperature	-20 ÷ +90 °C
Filtrazione assoluta Absolute filtration	25 µ

Vite cava disponibile a richiesta Nipple screw available upon request	Codice di ordinazione Ordering Code
	KITV0006

Coppia di serraggio Installation torque	65 ÷ 70 Nm 49 ÷ 53 lb ft
--	-----------------------------



Sigla di ordinazione / Ordering code

RTD-FMSH-VC-12

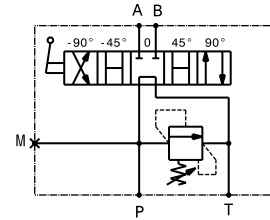
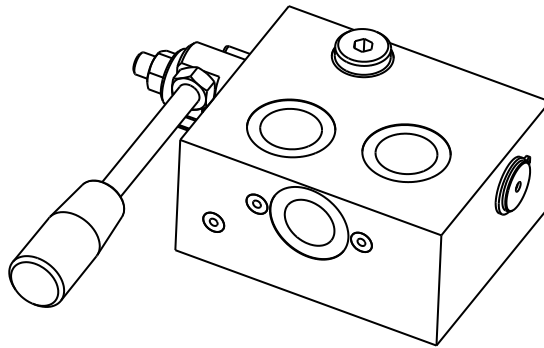
Modello
Type

I dati non sono impegnativi, **CBF** si riserva di apportare modifiche senza preavviso.
 The specifications are not binding, **CBF** reserves the right to introduce modifications without notice.

Rotodeviatore con valvola limitatrice di pressione flangiabile su motori SAMHYDRAULIK AG-AR
 Rotating distributor with relief valve, flangeable to SAMHYDRAULIK AG-AR motors

mod. RTD-FMSH-VC-VLP40-12

Corpo in alluminio
 Aluminium body



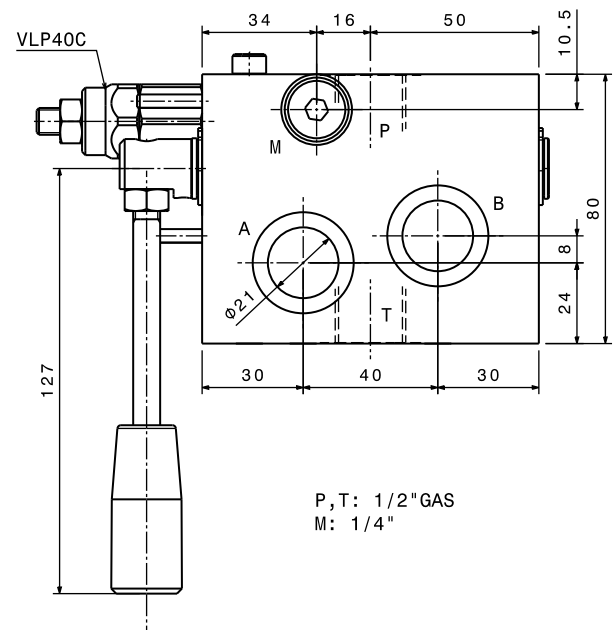
Portata massima Max flow	60 l/min 16 gpm
Pressione massima Max pressure	300 bar 4300 psi

Vite cava disponibile a richiesta Nipple screw available upon request	Codice di ordinazione Ordering Code
	KITV0005

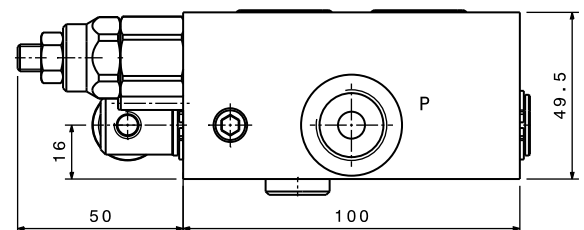
Taratura Setting		
Codice Code	Taratura standard Standard setting (Q=5 l/min)	Campo di taratura Adj. Pressure range
00	40 bar 580 psi	5÷40 bar 72.5÷580 psi
01	80 bar 1160 psi	20÷100 bar 290÷1450 psi
02	180 bar 2600 psi	40÷250 bar 580÷3600 psi
03	250 bar 3600 psi	60÷350 bar 870÷5000 psi

Dati e tarature ottenuti usando olio con viscosità 30 cSt a 50°C Performances and calibrations are carried out by using hydraulic oil with 30 cSt viscosity at 50°C	
Viscosità consigliate Recommended viscosity	10 ÷ 420 cSt
Temperature di lavoro Working temperature	-20 ÷ +90 °C
Filtrazione assoluta Absolute filtration	25 µ

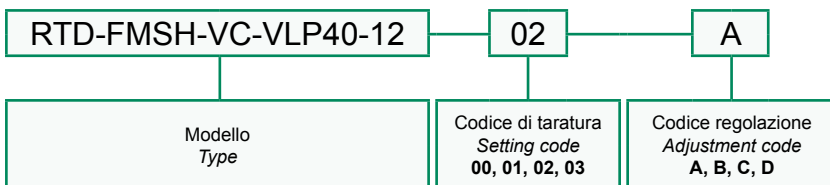
Regolazioni Adjustments			
A 	B 	C 	D
Vite esterna esagono incassato Leakproof hex socket screw	Volantino e dado Handknob and locknut	Piombatura Sealing cap	Cappellino Cap



P, T: 1/2" GAS
 M: 1/4"



Sigla di ordinazione / Ordering code



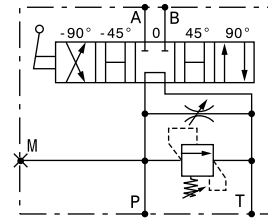
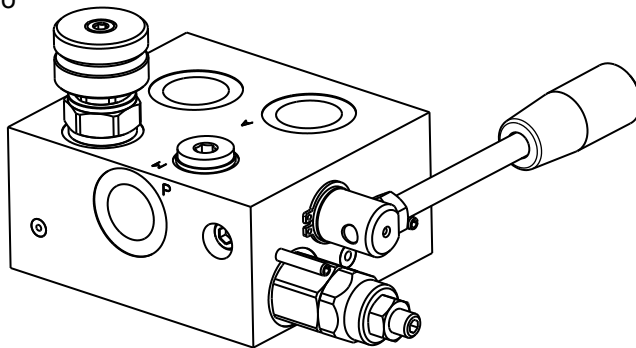
Coppia di serraggio Installation torque	80 ÷ 90 Nm 60 ÷ 67 lb ft
--	-----------------------------

I dati non sono impegnativi, **CBF** si riserva di apportare modifiche senza preavviso.
 The specifications are not binding, **CBF** reserves the right to introduce modifications without notice.

Rotodeviatore con valvola limitatrice di pressione e strozzatore flangiabile su motori SAMHYDRAULIK AG-AR
 Rotating distributor with relief and needle valve, flangeable to SAMHYDRAULIK AG-AR motors

mod. RTD-FMSH-VC-VLP40-ST-12

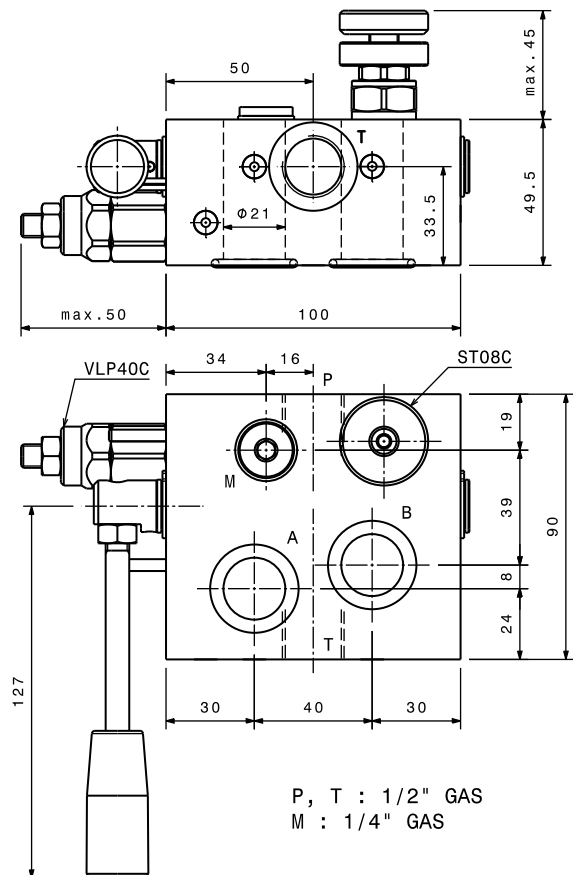
Corpo in alluminio
 Aluminium body



Portata massima Max flow	60 l/min 16 gpm
Pressione massima Max pressure	300 bar 4300 psi

Vite cava disponibile a richiesta Nipple screw available upon request	Codice di ordinazione Ordering Code KITV0005
--	---

Taratura Setting		
Codice Code	Taratura standard Standard setting (Q=5 l/min)	Campo di taratura Adj. Pressure range
00	40 bar 580 psi	5÷40 bar 72.5÷580 psi
01	80 bar 1160 psi	20÷100 bar 290÷1450 psi
02	180 bar 2600 psi	40÷250 bar 580÷3600 psi
03	250 bar 3600 psi	60÷350 bar 870÷5000 psi



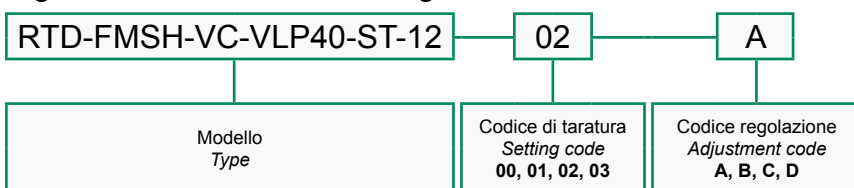
Dati e tarature ottenuti usando olio con viscosità 30 cSt a 50°C
 Performances and calibrations are carried out by using hydraulic oil with 30 cSt viscosity at 50°C

Viscosità consigliate Recommended viscosity	10 ÷ 420 cSt
Temperature di lavoro Working temperature	-20 ÷ +90 °C
Filtrazione assoluta Absolute filtration	25 µ

Regolazioni
Adjustments

A Vite esterna esagono incassato Leakproof hex socket screw	B Volantino e dado Handknob and locknut	C Piombatura Sealing cap	D Cappellino Cap
--	--	---	-----------------------------------

Sigla di ordinazione / Ordering code

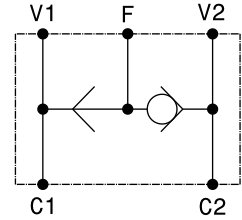
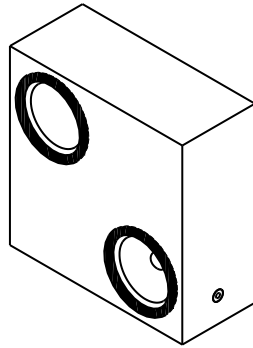


Coppia di serraggio Installation torque	80 ÷ 90 Nm 60 ÷ 67 lb ft
--	-----------------------------

I dati non sono impegnativi, CBF si riserva di apportare modifiche senza preavviso.
 The specifications are not binding, CBF reserves the right to introduce modifications without notice.

Valvola selettoria flangiabile su motori DANFOSS OMP-OMPL-OMR
 Shuttle valve, flangeable to DANFOSS OMP-OMPL-OMR motors
 mod. VS-FMD-VC

Corpo in alluminio
 Aluminium body

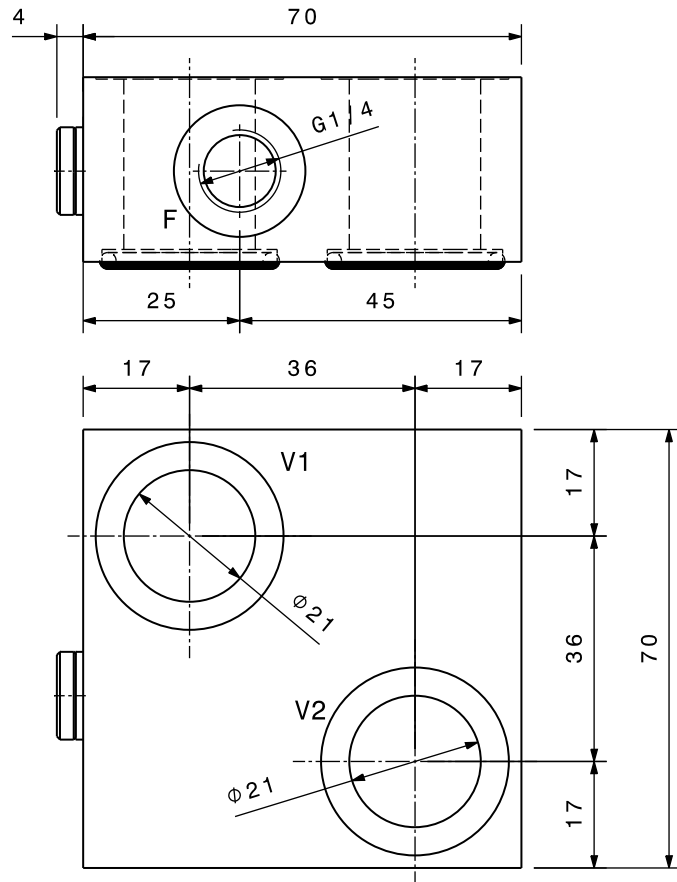


Portata massima Max flow	60 l/min 16 gpm
Pressione massima Max pressure	270 bar 3900 psi

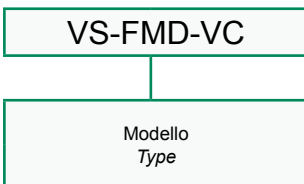
Dati e tarature ottenuti usando olio con viscosità 30 cSt a 50°C
 Performances and calibrations are carried out by using hydraulic oil with 30 cSt viscosity at 50°C

Viscosità consigliate Recommended viscosity	10 ÷ 420 cSt
Temperature di lavoro Working temperature	-20 ÷ +90 °C
Filtrazione assoluta Absolute filtration	25 µ

Vite cava disponibile a richiesta Nipple screw available upon request	Codice di ordinazione Ordering Code
	KITV0004



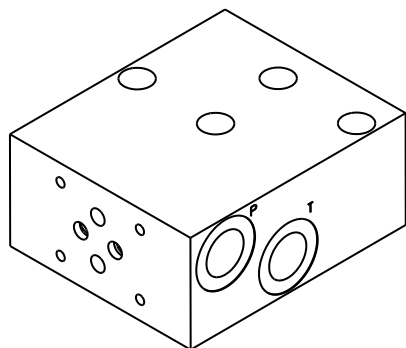
Sigla di ordinazione / Ordering code



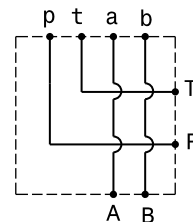
I dati non sono impegnativi, **CBF** si riserva di apportare modifiche senza preavviso.
 The specifications are not binding, **CBF** reserves the right to introduce modifications without notice.

Base per elettrovalvole flangiabile su motori DANFOSS OMP-OMR - luce 6
 Sub-plate for solenoid valves, flangeable to DANFOSS OMP-OMR motors - NG 6

mod. BEC3-FMD-1-12



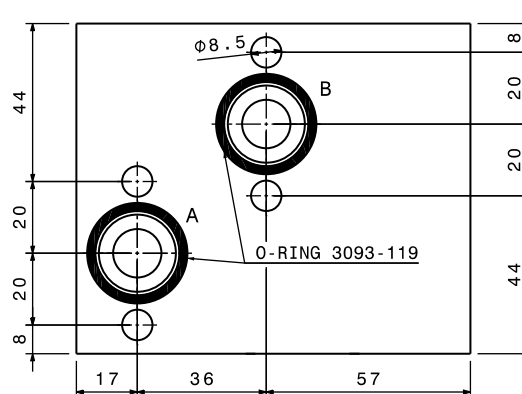
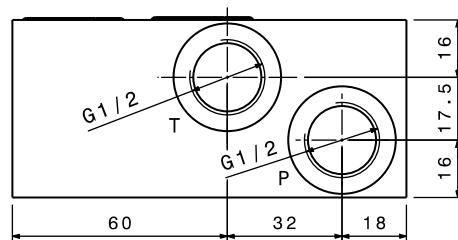
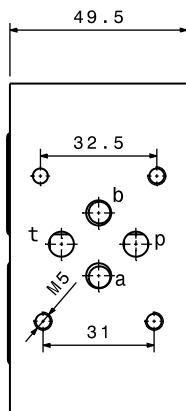
Corpo in alluminio
 Aluminium body



Portata massima Max flow	40 l/min 10.5 gpm
Pressione massima Max pressure	280 bar 4060 psi

Dati e tarature ottenuti usando olio con viscosità 30 cSt a 50°C
 Performances and calibrations are carried out by using hydraulic oil with 30 cSt viscosity at 50°C

Viscosità consigliate Recommended viscosity	10 ÷ 420 cSt
Temperature di lavoro Working temperature	-20 ÷ +90 °C
Filtrazione assoluta Absolute filtration	25 µ



Sigla di ordinazione / Ordering code

BEC3-FMD-1-12

Modello
 Type

I dati non sono impegnativi, **CBF** si riserva di apportare modifiche senza preavviso.
 The specifications are not binding, **CBF** reserves the right to introduce modifications without notice.