

Schubladenschränke
Drawer cabinets
Armoires à tiroirs
Armadi a cassetti
Armario con cajones
Armários de gavetas

3 842 548 177/2013-09

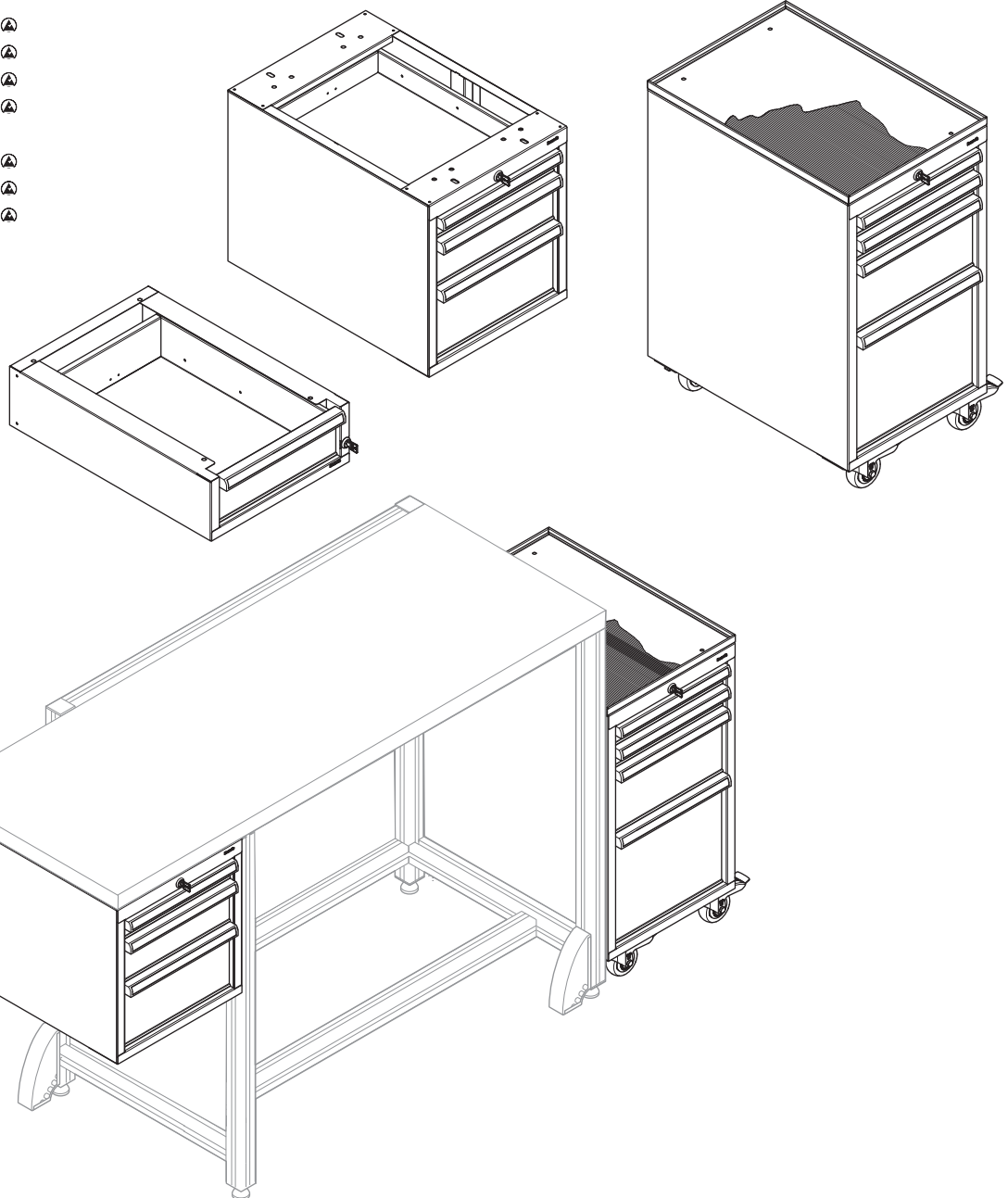
Replaces: –

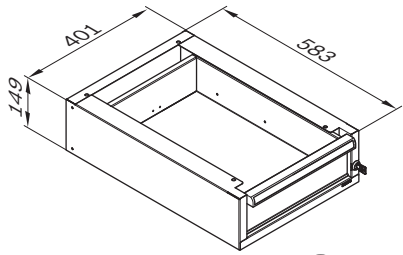
DE+EN+FR+IT+ES+PT




Montageanleitung • Assembly instructions • Instructions de montage
Istruzioni per il montaggio • Instrucciones de montaje • Instruções de montagem

- 3 842 546 533
- 3 842 546 534
- 3 842 546 535
- 3 842 546 538
- 3 842 546 539
- 3 842 546 540
- 3 842 546 541
- 3 842 546 542
- 3 842 546 543
- 3 842 546 546
- 3 842 546 547
- 3 842 547 885
- 3 842 547 886
- 3 842 547 887
- 3 842 548 900

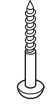




3 842 546 533 



(4x)

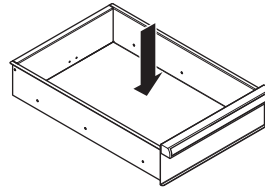


(4x)

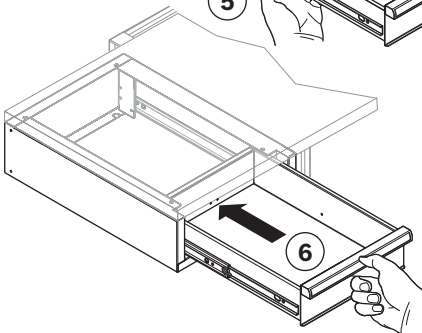
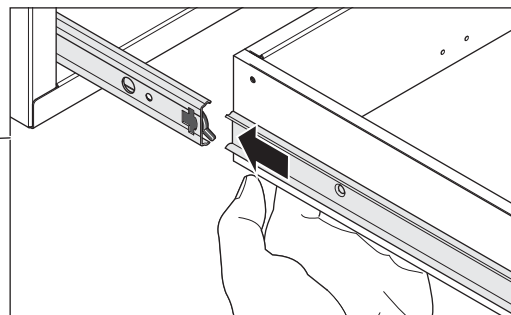
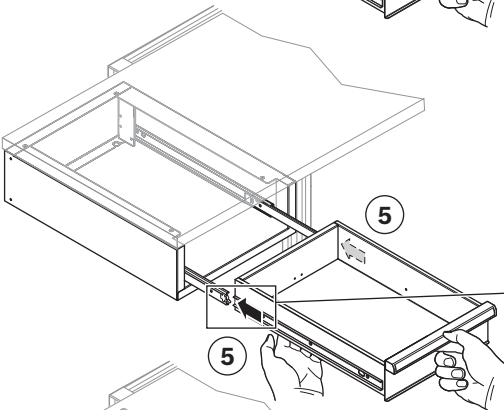
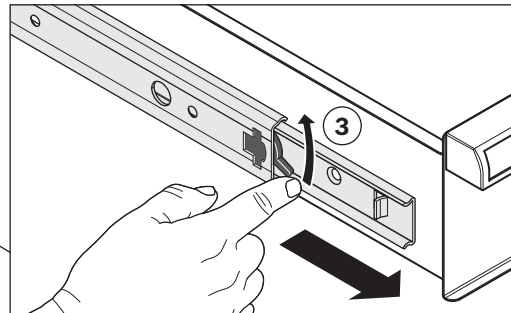
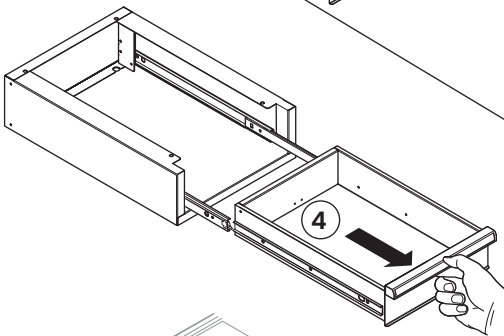
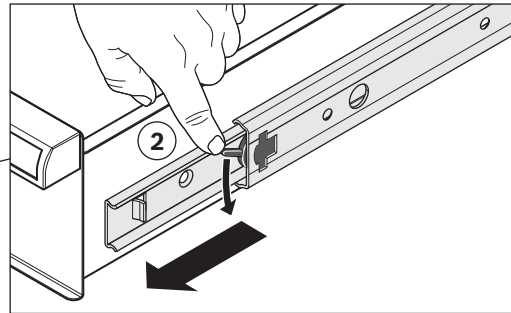
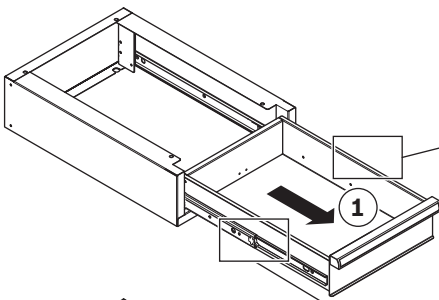


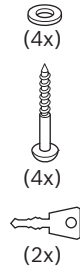
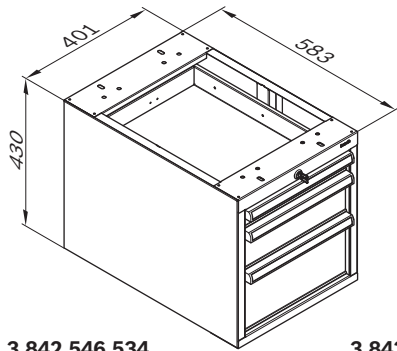
(2x)

max. 35 kg

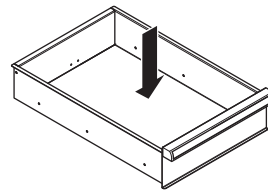


A





max. 35 kg

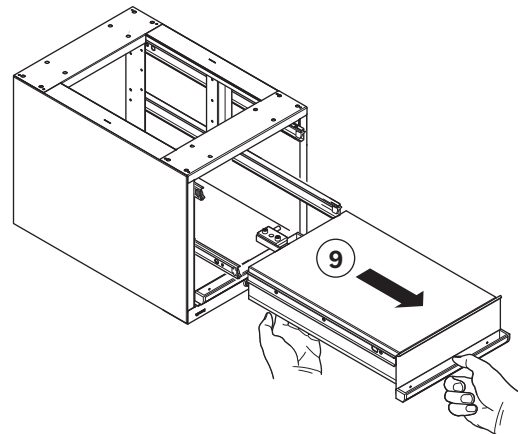
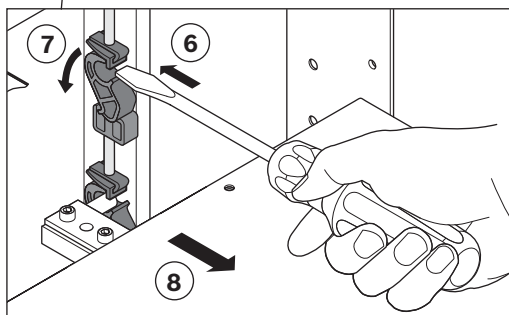
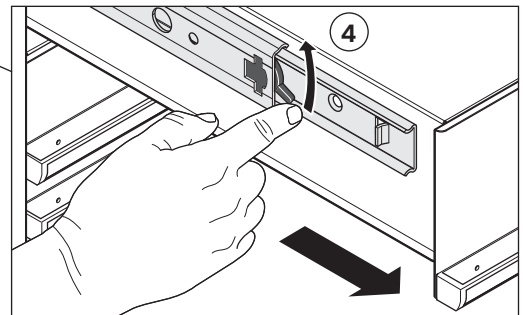
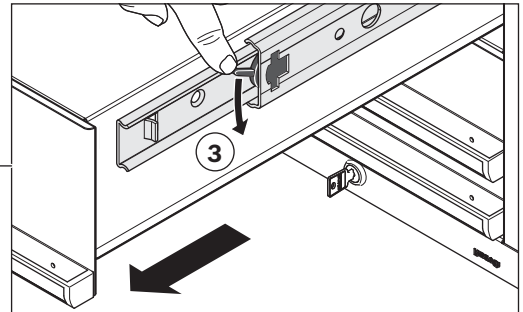
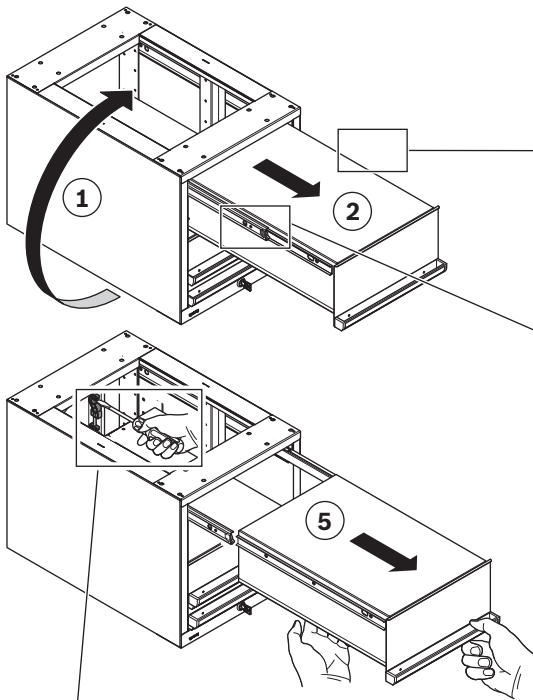


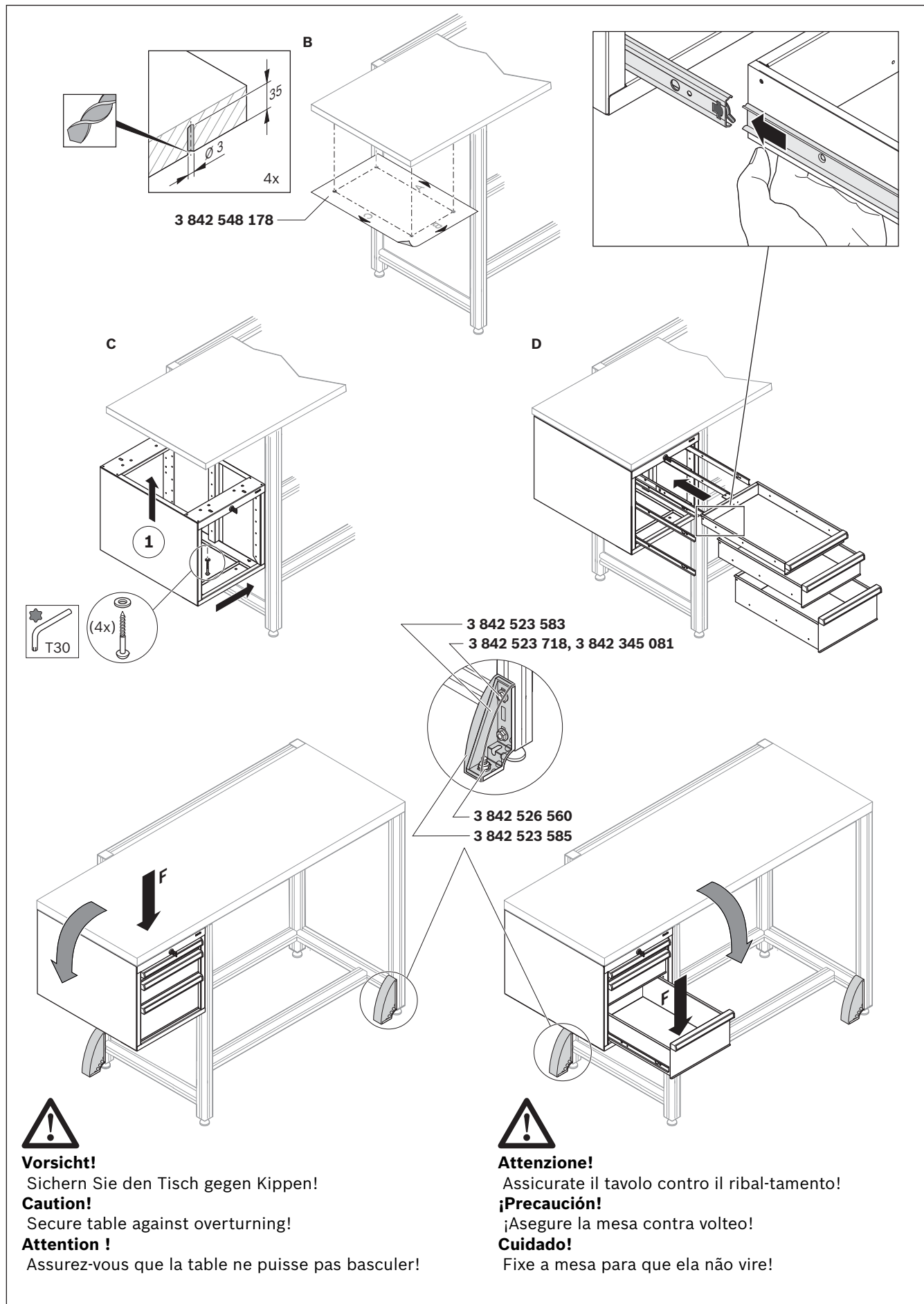
3 842 546 534
3 842 546 535

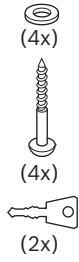
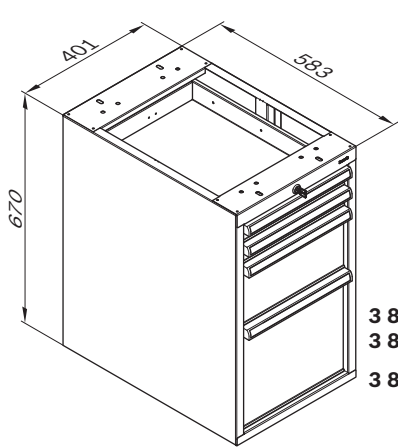
3 842 546 538
3 842 546 539



A



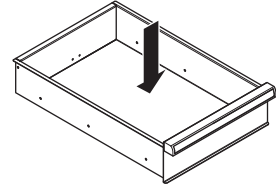




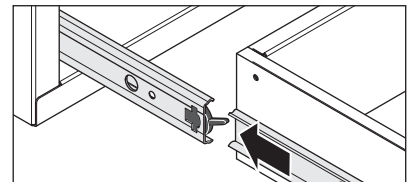
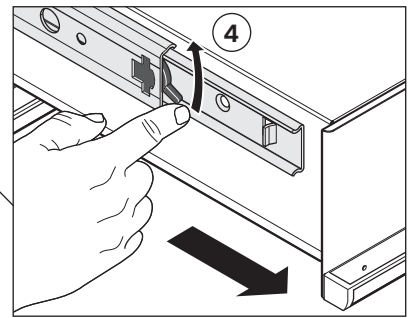
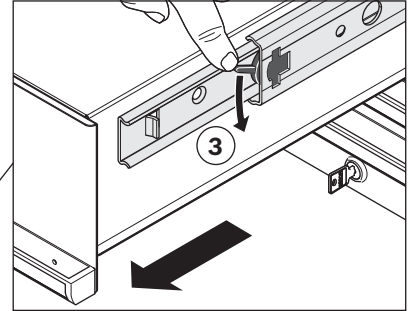
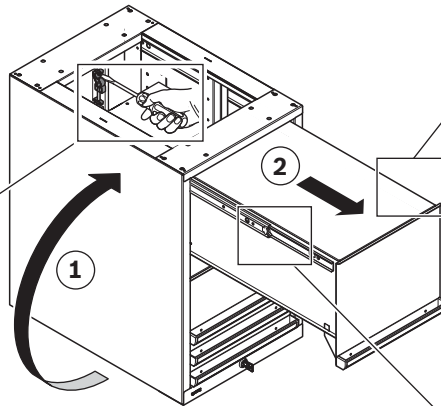
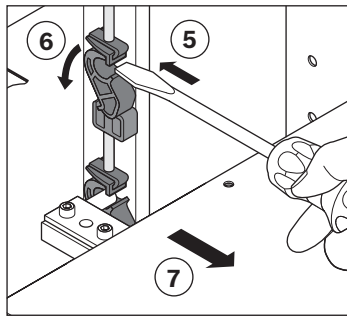
3 842 547 886
3 842 547 887
3 842 546 540



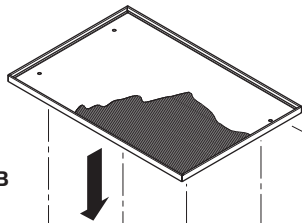
max. 35 kg



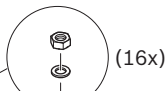
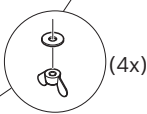
A



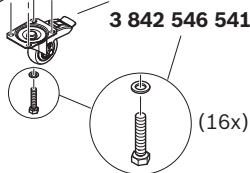
B



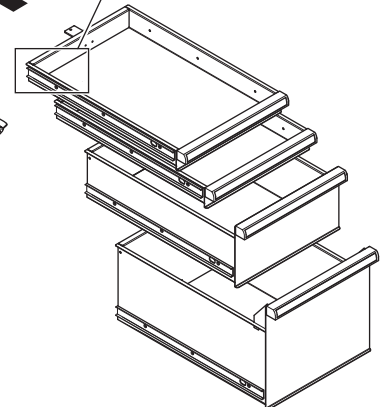
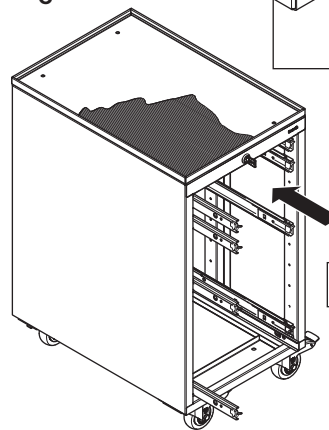
3 842 546 542
3 842 546 543

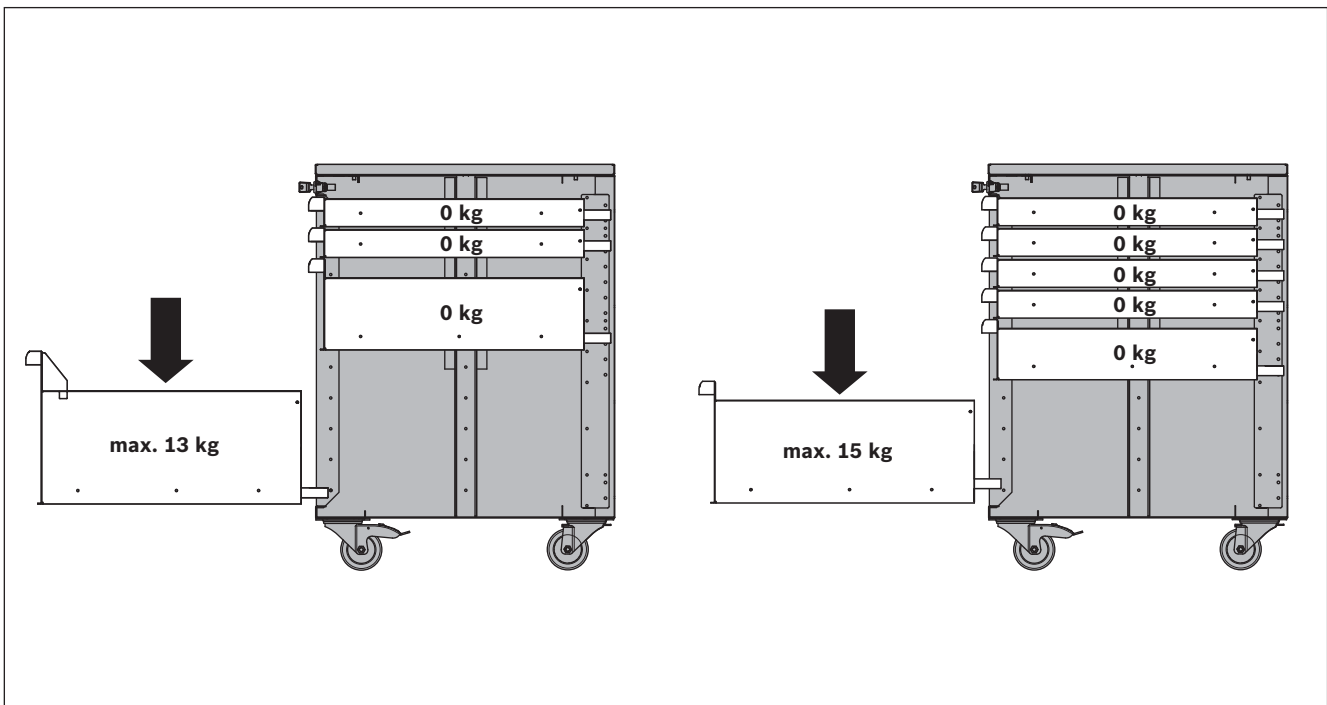


3 842 547 885
3 842 546 541



C





584 177-05

Gezeigt ist der ungünstigste Beladungsfall

In figura è riportato il tipo di carico più sfavorevole.



Vorsicht!

Je nach Beladung kann der Wagen kippen. Beladen Sie immer von unten nach oben.



Attenzione!

Il carrello può ribaltare a seconda del carico. Caricare sempre dal basso verso l'alto.

The least favorable loading situation is shown.

Se muestra el caso de carga más desfavorable.



Caution!

Depending on the load, the trolley can tip over. Always load from bottom to top.



¡Precaución!

El carro puede volcar dependiendo de la carga. Cárguelo siempre de abajo hacia arriba.

Le cas de chargement le plus défavorable est illustré.

É apresentada a situação de carga mais desfavorável.



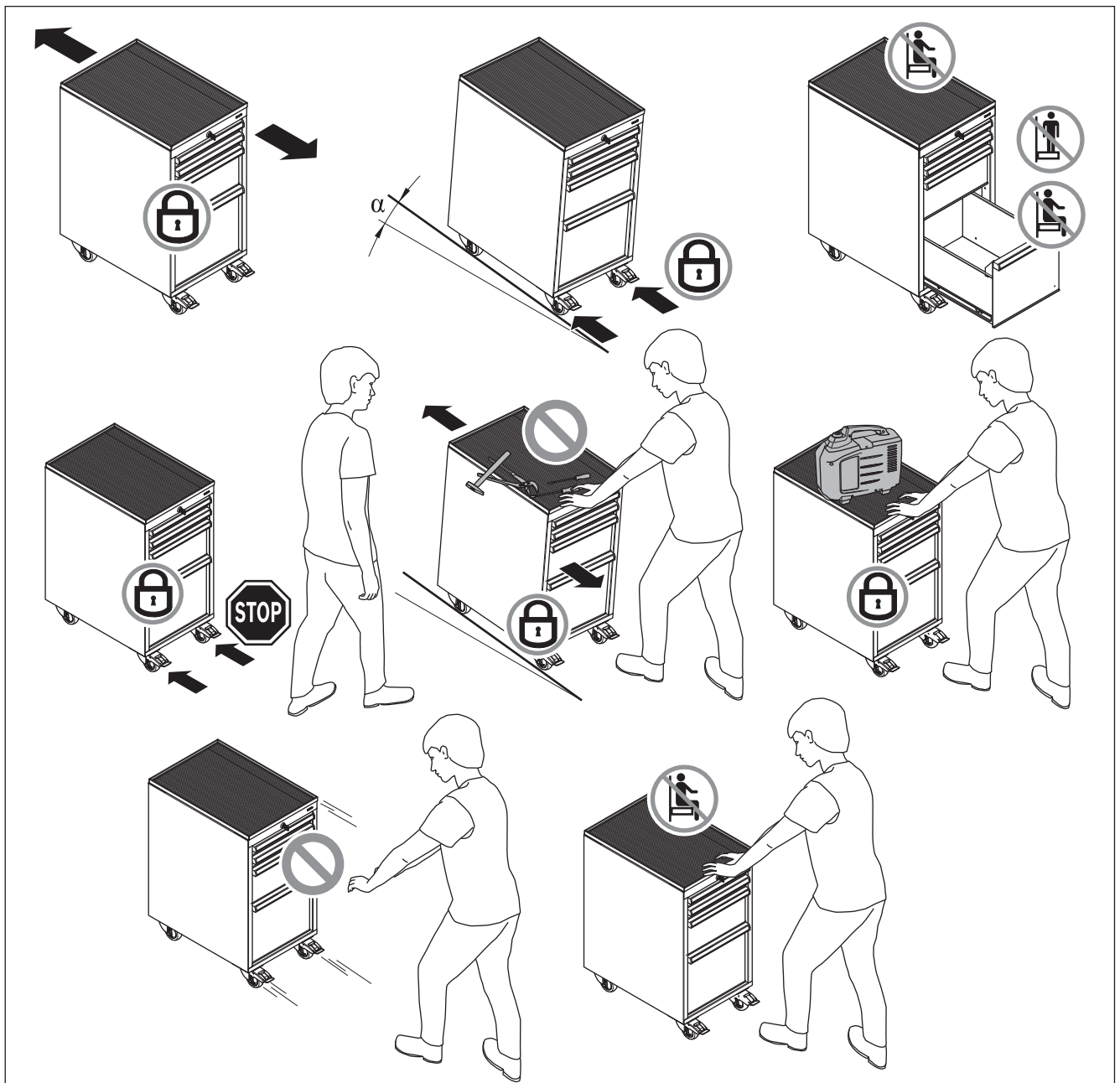
Attention !

En fonction du chargement, le chariot peut basculer. Procédez toujours au chargement de bas en haut.



Cuidado!

Conforme a carga o carro pode virar. Carregue sempre de baixo para cima.



584 177-07



Schubladen abschließen.
Lock the drawers.
Fermez les tiroirs !



Chiudere a chiave il cassetto.
Cerrar los cajones con llave.
Fechar as gavetas.



Nicht darauf setzen.
Do not sit.
Ne vous asseyez pas dessus !



Non sedersi sopra.
No sentarse.
Não sentar em cima das mesmas.



Nicht darauf steigen.
Do not stand.
Ne montez pas dessus !



Non salirvi sopra.
No subirse.
Não subir nas mesmas.



Bremsen feststellen.
Lock the brakes.
Bloquez les freins !



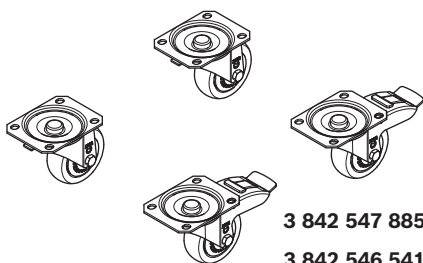
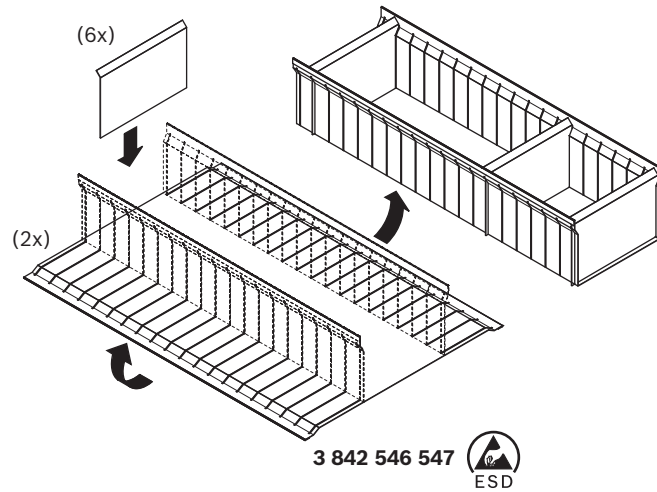
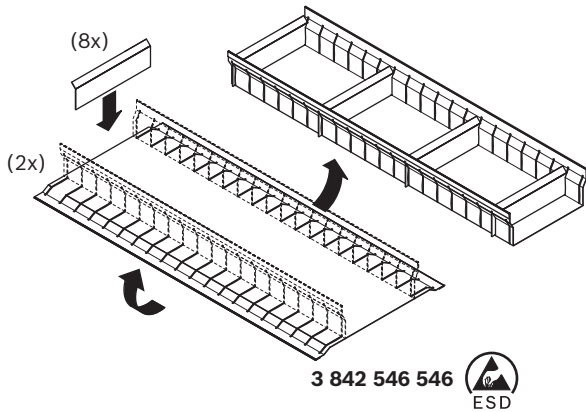
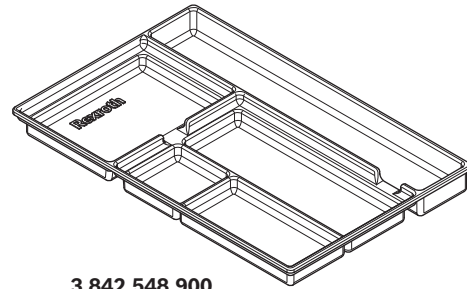
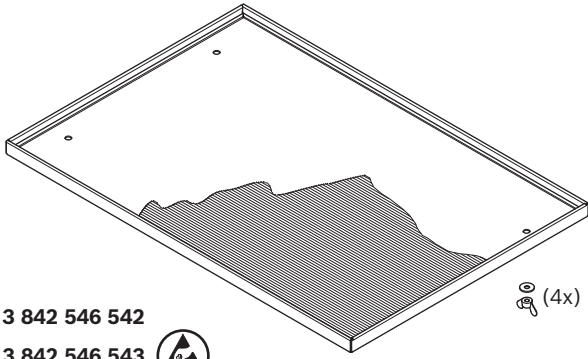
Bloccare i freni.
Aplicar los frenos.
Acionar os freios.



Verboten!
Forbidden!
Interdit !



Vietato!
¡Prohibido!
Proibido!



- 16 x ISO4017 M8x16
- 32 x DIN125-8,4
- 16 x ISO4032-M8