

## Sticking Throttling/Check Valve, series 2 Series SRDA ..

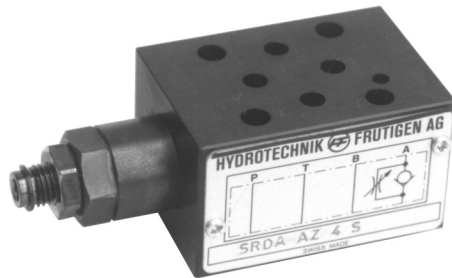
**M - 18.00**

Issue 08-97

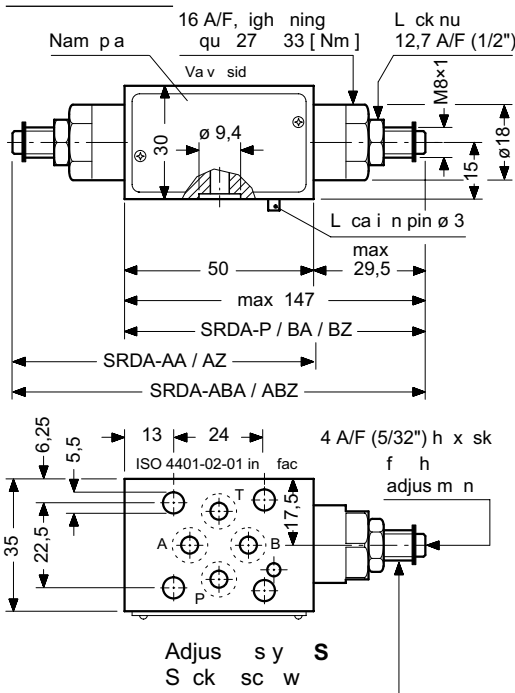
with ISO 4401-02-01 in face

- Semi-cable Throttling/Check mounting
- Finishing in white
- Self-cleaning

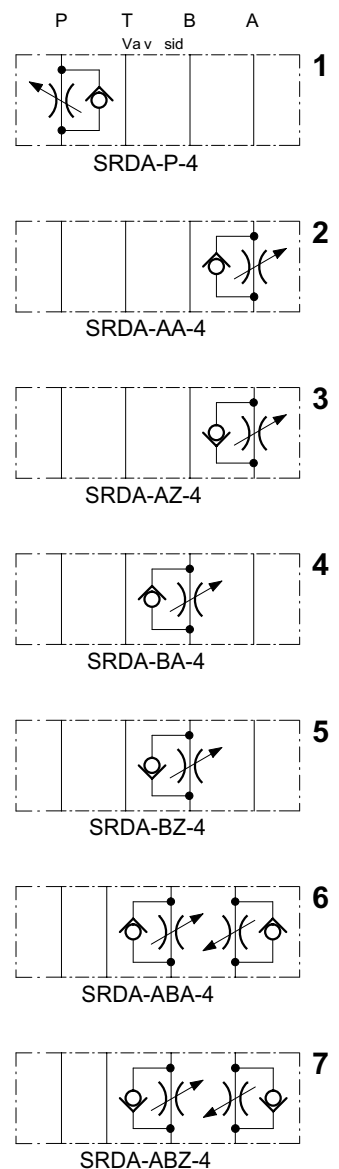
<b>4 mm nom.</b>
<b>p max 250 [ bar ]</b>
<b>max 25 [ l/min ]</b>



### DIMENSIONS



### SYMBOLS



### DESCRIPTION

Series SRDA-4 is a semi-cable throttling/check valve used to regulate flow and prevent backflow.

In normal operation, the valve is closed. When the pressure in the line drops, the valve opens to allow backflow.

The valve is available in various configurations, including semi-cable and hand knob operation. The hand knob version allows for manual adjustment of the valve opening.

The 3 mm diameter pin is used to adjust the valve opening.

The valve is shipped with a screw-adjuster. Alternatively, it can be supplied with a hand knob or a hand knob with a spring return.

S1Z-1585 SUBJECT TO CHANGE WITHOUT NOTICE



1800-OILSOL  
1800-645765

<https://oilsolutions.com.au/>

[sales@oilsolutions.com.au](mailto:sales@oilsolutions.com.au)

**PRINCIPAL CHARACTERISTICS**

Type	throttle/check slice valve
Design	spool type
Mounting method	stack mounting
Size	ISO 4401-02-01 interface
Mass	0,45 kg
Mounting attitude	unrestricted
Flow direction	see symbols
Operating pressure	... 250 bar in P, A, B and T ... 160 bar in T if used with WEDA-...-4 directional valve (data sheet W-12.00)

Cracking pressure	app. 0,6 bar in free flow direction
Fluids	Hydraulic oils HL and HLP to DIN 51 524 other fluids - contact HTF
Minimum fluid cleanliness	18/14 to ISO 4406 / Cetop RP70H 8 ... 9 to NAS 1638
Fluid temperature range	-20° ... +60° C
Viscosity range	10 ... 300 cSt
Flow rate, Q max.	25 l/min

**SCHEMATIC SECTION**

showing the relevant ports



**COMPONENTS / SERVICE PARTS**

lt.	Qty.	Description
1	2 2 1 1 1 1 1	Threaded housing $\varnothing$ 18 x 25
2	2 2 1 1 1 1 1	Adjuster screw $\varnothing$ 8,4 x 45
3	2 2 1 1 1 1 1	Throttle sleeve $\varnothing$ 11,5 x 7
4	2 2 1 1 1 1 1	Special nut M8x1 x 4
5	2 2 1 1 1 1 1	Spring 0,5 x 7,5 x 21 iG = 9,5
6	1 1 1 1 1 1 1	Roll pin $\varnothing$ 3 x 6 DIN 1481
7	1 1 1 1 1 1 1	Seal kit no. DS-211, comprising *):
8	2*) 2 1 1 1 1 1 1	O-ring no. 014 $\varnothing$ 12,42 x 1,78 N90
9	4*) 4 4 4 4 4 4 4	O-ring no. 010 $\varnothing$ 6,07 x 1,78 N90
10	2*) 2 1 1 1 1 1 1	O-ring no. 009 $\varnothing$ 5,28 x 1,78 N90
11	1	Sandwich body Type SS $\varnothing$ 7
	- - - - - 1 -	Sandwich body Type XP-4 30 x 35 x 50
	- - - - - 1 -	Sandwich body Type XB-4 30 x 35 x 50
	- - - - 1 - -	Sandwich body Type XC-4 30 x 35 x 50
	- - - 1 - - -	Sandwich body Type XD-4 30 x 35 x 50
	- - 1 - - - -	Sandwich body Type XE-4 30 x 35 x 50
	- 1 - - - - -	Sandwich body Type X-4 30 x 35 x 50
	1 - - - - -	Sandwich body Type XA-4 30 x 35 x 50

- SRDA-ABZ-4
- SRDA-ABA-4
- SRDA-BZ-4
- SRDA-BA-4
- SRDA-AZ-4
- SRDA-AA-4
- SRDA-P-4

TO ORDER SERVICE PARTS, STATE:

- complete unit model code from the nameplate, including the design number.
- part description from above list.
- part item number from above list.
- data sheet number, including issue date
- quantity required

**INSTALLATION AND SERVICING**

MUST BE CARRIED OUT WITH CARE, AND BY QUALIFIED PERSONNEL ONLY.

At installation, be sure to mount the valve the correct way up. Do not confuse the flat surface (directional valve side) and the surface with O-ring counterbores (actuator side).

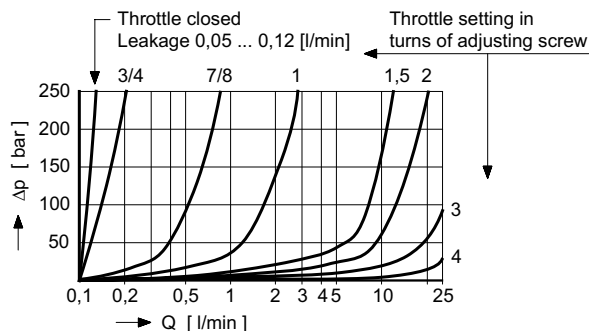
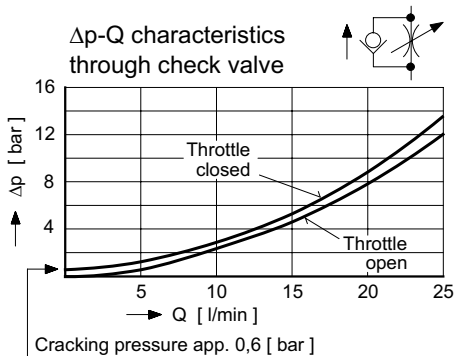
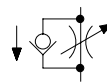
When changing seals, the new seals should be thoroughly oiled or greased before fitting them to the valve.

Use the correct tightening torque when fitting the cartridge.

**PERFORMANCE CHARACTERISTICS**

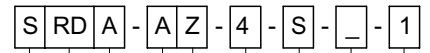
Oil viscosity 33 cSt

$\Delta p$ -Q characteristics at constant throttle settings



MODEL CODE KEY

Ex.



- S = stacking valve
- RD = throttle/check function
- A ... Q = **standard** model per current data sheet
- Z ... R = special features by arrangement
- P = function in P
- A = function in A
- B = function in B
- AB = function in A and B
- A = meter-out function
- Z = meter-in function
- 4 = ISO 4401-02-02 interface
- S = with hex. skt. screw adjuster (**standard**)
- H = with hand knob adjuster type H
- Z = with lockable hand knob adjuster type Z6
- (Blank) = Nitrile seals (**standard**)
- V = Viton seals
- For special seals, contact HTF
- 1 ... 9 = design number (omit when ordering)

RELATED DATA SHEETS

i-30 = ISO 4401-02-01 interface