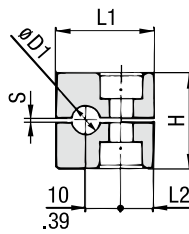
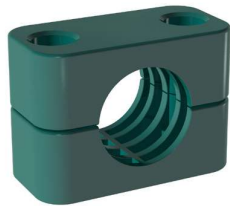
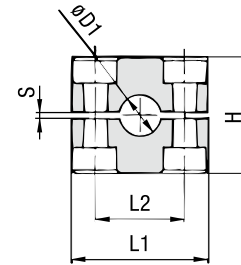


Clamp Body - Profiled Design
Profiled Inside Surface with Tension Clearance

A



STAUFF Group 1



STAUFF Group 1A to 8

Ordering Codes

Clamp Body *1*06-*PP
Clamp Body, STAUFF Group 1A *1*06A-*PP

One clamp body is consisting of two clamp halves.

- * STAUFF Group **1**
- * Exact outside diameter $\varnothing D1$ (mm) **06**
- * Material code (see below) **PP**

Standard Materials



Polypropylene
 Colour: Green
 Material code: **PP**



Polypropylene
 Colour: Black
 Material code: **PP-BK**



Polyamide
 Colour: Black
 Material code: **PA**



Thermoplastic Elastomer (87 Shore-A)
 Colour: Black
 Material code: **SA**



Aluminium
 Colour: Self-Colour
 Material code: **AL** (STAUFF Group 1A to 6)

See pages 154 / 155 for material properties and technical information.

Special Materials

Please contact STAUFF for further details on fire-proof clamp body materials, tested and approved according to several international fire-protection standards (such as BS 6853, EN 45545-2, UL 94 and many more).

See pages 156 / 157 for material properties and technical information.

Product Features

- Proven, tested and trusted product in various markets
- Recommended for the safe installation of rigid pipes and tubes
- Available for all commonly used pipe and tube outside diameters
- Environmental protection due to vibration/noise reducing design
- Excellent weathering resistance, even under extreme conditions

Group	STAUFF	DIN	Outside Diameter		Nominal Bore		Ordering Codes (2 Clamp Halves)	Dimensions (mm/in)				
			Pipe / Tube $\varnothing D1$ (mm)	(in)	Pipe (in)	Copper Tube ASTM B88 (in)		L1	L2	H	S min.	Width
1	0		6				106-**-**	1.10	.37	1.06	.02	1.18
			6,4	1/4			106.4-**-**					
			8	5/16			108-**-**					
			9,5	3/8		1/4	109.5-**-**					
			10		1/8		110-**-**					
			12				112-**-**					
1A	1		6				106A-**-**	1.46	.79	1.06	.02	1.18
			6,4	1/4			106.4A-**-**					
			8	5/16			108A-**-**					
			9,5	3/8		1/4	109.5A-**-**					
			10		1/8		110A-**-**					
			12				112A-**-**					
2	2		12,7	1/2		3/8	212.7-**-**	1.65	1.02	1.30	.02	1.18
			13,5		1/4		213.5-**-**					
			14				214-**-**					
			15				215-**-**					
			16	5/8		1/2	216-**-**					
			17,2		3/8		217.2-**-**					
3	3		18				218-**-**	1.97	1.30	1.42	.02	1.18
			19	3/4			319-**-**					
			20				320-**-**					
			21,3		1/2		321.3-**-**					
			22	7/8		3/4	322-**-**					
			25				325-**-**					
4	4		25,4	1			325.4-**-**	2.32	1.57	1.65	.02	1.18
			26,9		3/4		426.9-**-**					
			28				428-**-**					
			28,6			1	428.6-**-**					
			30				430-**-**					
			32				432-**-**					
5	5		32	1-1/4			532-**-**	2.80	2.05	2.28	.03	1.18
			33,7		1		533.7-**-**					
			35			1-1/4	535-**-**					
			38	1-1/2			538-**-**					
			40				540-**-**					
			41,3			1-1/2	541.3-**-**					
6	6		42		1-1/4		542-**-**	3.39	2.60	2.60	.03	1.18
			44,5	1-3/4			644.5-**-**					
			48,3		1-1/2		648.3-**-**					
			50,8	2			650.8-**-**					
			54			2	654-**-**					
			57,2	2-1/4			757.2-**-**					
7	7		60,3		2		760.3-**-**	4.76	3.70	3.66	.03	1.18
			63,5	2-1/2			763.5-**-**					
			70	2-3/4			770-**-**					
			73		2-1/2 (ANSI B 36-10)		773-**-**					
			76,1	3	2-1/2 (DIN EN 10220)		776.1-**-**					
			88,9		3		888.9-**-**					
8	8		102	4	3-1/2		8102L-**-**	5.79	4.72	4.65	.03	1.18

Additional outside diameters are available upon request. Please contact STAUFF for further information.



1800-OILSOL
 1800-645765

<https://oilsolutions.com.au/>

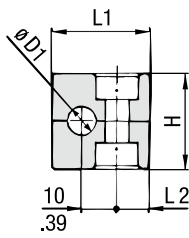
sales@oilsolutions.com.au

Dimensional drawings: All dimensions in mm (in).

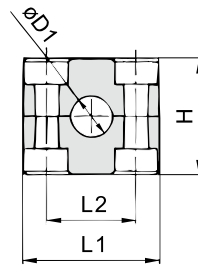


Clamp Body - Type H

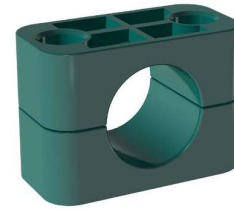
Smooth Inside Surface without Tension Clearance



STAUFF Group 1



STAUFF Group 1A to 8


A

Group	STAUFF DIN	Outside Diameter Hose Ø D1		Ordering Codes (2 Clamp Halves) (** - H = Material)	Dimensions (mm / in)			
		(mm)	(in)		L1	L2	H	Width
1	0	6		106-**-H	28	9,5	26	30
		6,4	1/4	106.4-**-H				
		8	5/16	108-**-H				
		9,5	3/8	109.5-**-H				
		10		110-**-H				
		12		112-**-H				
1A	1	6		106A-**-H	37	20	26	30
		6,4	1/4	106.4A-**-H				
		8	5/16	108A-**-H				
		9,5	3/8	109.5A-**-H				
		10		110A-**-H				
		12		112A-**-H				
2	2	12,7	1/2	212.7-**-H	42	26	32	30
		13,5		213.5-**-H				
		14		214-**-H				
		15		215-**-H				
		16	5/8	216-**-H				
		17,2		217.2-**-H				
		18		218-**-H				
3	3	19	3/4	319-**-H	50	33	35,5	30
		20		320-**-H				
		21,3		321.3-**-H				
		22	7/8	322-**-H				
		25		325-**-H				
		25,4	1	325.4-**-H				
4	4	26,9		426.9-**-H	59	40	41,5	30
		28		428-**-H				
		30		430-**-H				
		32		432-**-H				
		32	1-1/4	532-**-H				
5	5	33,7		533.7-**-H	71	52	56,5	30
		35		535-**-H				
		38	1-1/2	538-**-H				
		40		540-**-H				
		42		542-**-H				
6	6	44,5	1-3/4	644.5-**-H	86	66	64,5	30
		48,3		648.3-**-H				
		50,8	2	650.8-**-H				
		54		654-**-H				
7	7	57,2	2-1/4	757.2-**-H	121	94	92	30
		60,3		760.3-**-H				
		63,5	2-1/2	763.5-**-H				
		70	2-3/4	770-**-H				
		73		773-**-H				
		76,1	3	776.1-**-H				
8	8	88,9		888.9-**-H	147	120	116	30
		102	4	8102L-**-H				

Ordering Codes

Clamp Body *1*06-*PP-H
Clamp Body, STAUFF Group 1A *1*06A-*PP-H

One clamp body is consisting of two clamp halves.

* STAUFF Group **1**
 * Exact outside diameter Ø D1 (mm) **06**
 * Material code (see below) **PP-H**

Standard Materials


Polypropylene
 Colour: Green
 Material code: **PP-H**



Polypropylene
 Colour: Black
 Material code: **PP-H-BK**



Polyamide
 Colour: Black
 Material code: **PA-H**



Thermoplastic Elastomer (87 Shore-A)
 Colour: Black
 Material code: **SA-H**

See pages 154 / 155 for material properties and technical information.

Special Materials

Please contact STAUFF for further details on fire-proof clamp body materials, tested and approved according to several international fire-protection standards (such as BS 6853, EN 45545-2, UL 94 and many more).

See pages 156 / 157 for material properties and technical information.

Product Features

- Proven, tested and trusted product in various markets
- Recommended for the safe installation of hoses and cables
- Chamfered edges avoid damaging of the hoses and cables
- Available for all commonly used hose and cable outside diameters
- Excellent weathering resistance, even under extreme conditions

Additional outside diameters are available upon request. Please contact STAUFF for further information.



1800-OILSOL <https://oilsolutions.com.au/>
 1800-645765

sales@oilsolutions.com.au

Dimensional drawings: All dimensions in mm (in).

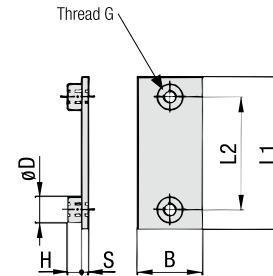
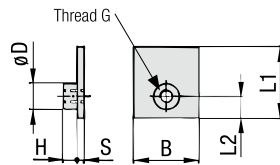
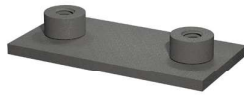


www.stauff.com/1/en/#15

Catalogue 1 - Edition 08/2019

Single Weld Plate Type SP

A



STAUFF Group 1

STAUFF Group 1A to 8

Ordering Codes

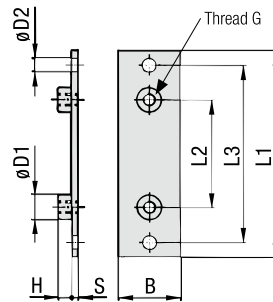
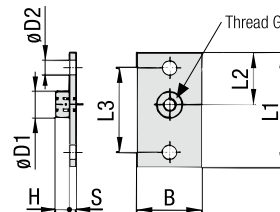
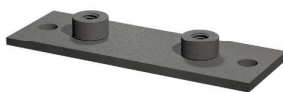
Weld Plate ***SP-*1-*M-*W2**

- * Single Weld Plate **SP**
- * STAUFF Group **1**
- * Thread code Metric ISO thread **M**
Unified coarse (UNC) thread **U**
- * Material code Carbon Steel, phosphated **W2**
Carbon Steel, zinc/nickel-plated **W3**
Stainless Steel V2A **W4**
1.4301 / 1.4305 (AISI 304 / 303) **W4**
Stainless Steel V4A **W5**
1.4401 / 1.4571 (AISI 316 / 316 Ti) **W5**
Aluminium EN AW-6060 **W85**
(Dimension S: 5 mm / .20 in)

Group	STAUFF	DIN	Dimensions (mm/in)						Ordering Codes (Standard Options)	
			Thread G	L1	L2	B	S	H	ØD	
1	0		M6	31,5	10	30	3	6,5	12	SP-1-M-W2
			1/4-20 UNC	1.24	0.39	1.18	.12	.26	.47	SP-1-U-W2
1A	1		M6	36	20	30	3	6,5	12	SP-1A-M-W2
			1/4-20 UNC	1.42	0.79	1.18	.12	.26	.47	SP-1A-U-W2
2	2		M6	42	26	30	3	6,5	12	SP-2-M-W2
			1/4-20 UNC	1.65	1.02	1.18	.12	.26	.47	SP-2-U-W2
3	3		M6	50	33	30	3	6,5	12	SP-3-M-W2
			1/4-20 UNC	1.97	1.30	1.18	.12	.26	.47	SP-3-U-W2
4	4		M6	60	40	30	3	6,5	12	SP-4-M-W2
			1/4-20 UNC	2.36	1.57	1.18	.12	.26	.47	SP-4-U-W2
5	5		M6	71	52	30	3	6,5	12	SP-5-M-W2
			1/4-20 UNC	2.80	2.05	1.18	.12	.26	.47	SP-5-U-W2
6	6		M6	88	66	30	3	6,5	12	SP-6-M-W2
			1/4-20 UNC	3.46	2.60	1.18	.12	.26	.47	SP-6-U-W2
7	7		M6	122	94	30	5	6,5	12	SP-7-M-W2
			1/4-20 UNC	4.80	3.70	1.18	.20	.26	.47	SP-7-U-W2
8	8		M6	148	120	30	5	6,5	12	SP-8-M-W2
			1/4-20 UNC	5.83	4.72	1.18	.20	.26	.47	SP-8-U-W2

All threaded parts are available with Metric ISO thread or unified coarse (UNC) thread according to dimension table. Alternative materials and surface finishings are available upon request. Contact STAUFF for further information.

Elongated Weld Plate Type SPV



STAUFF Group 1

STAUFF Group 1A to 8

Ordering Codes

Weld Plate ***SPV-*1-*M-*W2**

- * Elongated Weld Plate **SPV**
- * STAUFF Group **1**
- * Thread code Metric ISO thread **M**
Unified coarse (UNC) thread **U**
- * Material code Carbon Steel, phosphated **W2**
Carbon Steel, zinc/nickel-plated **W3**
Stainless Steel V2A **W4**
1.4301 / 1.4305 (AISI 304 / 303) **W4**
Stainless Steel V4A **W5**
1.4401 / 1.4571 (AISI 316 / 316 Ti) **W5**

Group	STAUFF	DIN	Dimensions (mm/in)						Ordering Codes (Standard Options)			
			Thread G	L1	L2	L3	B	S	H	ØD1	ØD2	
1	0		M6	58	24,5	44	30	3	6,5	12	6,5	SPV-1-M-W2
			1/4-20 UNC	2.28	.96	1.73	1.18	.12	.26	.47	.26	SPV-1-U-W2
1A	1		M6	64	20	50	30	3	6,5	12	6,5	SPV-1A-M-W2
			1/4-20 UNC	2.52	.79	1.97	1.18	.12	.26	.47	.26	SPV-1A-U-W2
2	2		M6	70	26	56	30	3	6,5	12	6,5	SPV-2-M-W2
			1/4-20 UNC	2.76	1.02	2.20	1.18	.12	.26	.47	.26	SPV-2-U-W2
3	3		M6	78	33	64	30	3	6,5	12	6,5	SPV-3-M-W2
			1/4-20 UNC	3.07	1.30	2.52	1.18	.12	.26	.47	.26	SPV-3-U-W2
4	4		M6	87	40	73	30	3	6,5	12	6,5	SPV-4-M-W2
			1/4-20 UNC	3.43	1.57	2.87	1.18	.12	.26	.47	.26	SPV-4-U-W2
5	5		M6	100	52	86	30	3	6,5	12	6,5	SPV-5-M-W2
			1/4-20 UNC	3.94	2.05	3.39	1.18	.12	.26	.47	.26	SPV-5-U-W2
6	6		M6	115	66	100	30	3	6,5	12	6,5	SPV-6-M-W2
			1/4-20 UNC	4.53	2.60	3.94	1.18	.12	.26	.47	.26	SPV-6-U-W2
7	7		M6	150	94	136	30	5	6,5	12	6,5	SPV-7-M-W2
			1/4-20 UNC	5.91	3.70	5.35	1.18	.20	.26	.47	.26	SPV-7-U-W2
8	8		M6	178	120	162	30	5	6,5	12	6,5	SPV-8-M-W2
			1/4-20 UNC	7.01	4.72	6.38	1.18	.20	.26	.47	.26	SPV-8-U-W2



1800-OILSOL
1800-645765

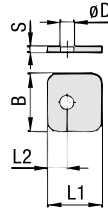
<https://oilsolutions.com.au/>

sales@oilsolutions.com.au

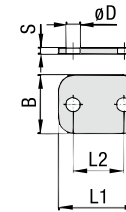


**Cover Plate
Type DP**

A



STAUFF Group 1



STAUFF Group 1A to 8

Ordering Codes

Cover Plate

***DP-*1-*W3**

* Cover Plate	DP
* STAUFF Group	1
* Material code	W3
Carbon Steel, zinc/nickel-plated	
Stainless Steel V2A	W4
1.4301 / 1.4305 (AISI 304 / 303)	
Stainless Steel V4A	W5
1.4401 / 1.4571 (AISI 316 / 316 Ti)	
Aluminium EN AW-6060	W85

Group STAUFF	DIN	Dimensions (mm/in)					Ordering Codes (Standard Options)
		L1	L2	B	S	ØD	
1	0	28	9,5	30	3	7	DP-1-W3
		1.10	.37	1.18	.12	.28	
1A	1	34	20	30	3	7	DP-1A-W3
		1.34	.79	1.18	.12	.28	
2	2	40,5	26	30	3	7	DP-2-W3
		1.59	1.02	1.18	.12	.28	
3	3	48	33	30	3	7	DP-3-W3
		1.89	1.30	1.18	.12	.28	
4	4	57	40	30	3	7	DP-4-W3
		2.24	1.57	1.18	.12	.28	
5	5	70	52	30	3	7	DP-5-W3
		2.76	2.05	1.18	.12	.28	
6	6	86	66	30	3	7	DP-6-W3
		3.39	2.60	1.18	.12	.28	
7	7	118	94	30	5	7	DP-7-W3
		4.65	3.70	1.18	.20	.28	
8	8	144	120	30	5	7	DP-8-W3
		5.67	4.72	1.18	.20	.28	

Alternative materials and surface finishings are available upon request. Contact STAUFF for further information.

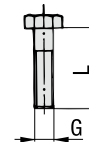
**Hexagon Head Bolt
(for Use with Cover Plate DP)
Type AS**



1800-OILSOL
1800-645765

<https://oilsolutions.com.au/>

sales@oilsolutions.com.au



Hexagon Head Bolt AS (according to DIN 931 / 933 or ANSI / ASME B18.2.1.)
Dimensions applicable only when used with Cover Plate DP

Ordering Codes

Hexagon Head Bolt

***AS-*M6x30-*W3**

* Type of bolt	Hexagon Head Bolt (according to DIN 931 / 933 or ANSI / ASME B18.2.1.)	AS
* Thread type and size acc. to dimension table	M6x30	
* Material code	W3	
Carbon Steel, zinc/nickel-plated		
Stainless Steel V2A	W4	
1.4301 / 1.4305 (AISI 304 / 303)		
Stainless Steel V4A	W5	
1.4401 / 1.4571 (AISI 316 / 316 Ti)		

Group STAUFF	DIN	Dimensions (mm/in) Thread G x L	Ordering Codes (Standard Options)
1	0	M6 x 30	AS-M6x30-W3
		1/4-20 UNC x 1-1/4	AS-1/4-20UNCx1-1/4-W3
1A	1	M6 x 30	AS-M6x30-W3
		1/4-20 UNC x 1-1/4	AS-1/4-20UNCx1-1/4-W3
2	2	M6 x 35	AS-M6x35-W3
		1/4-20 UNC x 1-3/8	AS-1/4-20UNCx1-3/8-W3
3	3	M6 x 40	AS-M6x40-W3
		1/4-20 UNC x 1-1/2	AS-1/4-20UNCx1-1/2-W3
4	4	M6 x 45	AS-M6x45-W3
		1/4-20 UNC x 1-7/8	AS-1/4-20UNCx1-7/8-W3
5	5	M6 x 60	AS-M6x60-W3
		1/4-20 UNC x 2-3/8	AS-1/4-20UNCx2-3/8-W3
6	6	M6 x 70	AS-M6x70-W3
		1/4-20 UNC x 2-3/4	AS-1/4-20UNCx2-3/4-W3
7	7	M6 x 100	AS-M6x100-W3
		1/4-20 UNC x 4	AS-1/4-20UNCx4-W3
8	8	M6 x 125	AS-M6x125-W3
		1/4-20 UNC x 4-7/8	AS-1/4-20UNCx4-7/8-W3

All threaded parts are available with Metric ISO thread or unified coarse (UNC) thread according to dimension table.
Alternative materials and surface finishings are available upon request. Contact STAUFF for further information.



A



① Type of Installation

Please select the type of installation (e.g. Weld Plates, Rail Nuts etc.) and add the corresponding Code to position ① of the order code for your clamp assembly.

Without Installation Equipment
Code: **none**

Installation on Weld Plate

Single Weld Plate
Code: **SP**

Elongated Weld Plate
Code: **SPV**

Twin Weld Plate (for STAUFF Group 1 to 6 only)
Code: **DSP**

Group Weld Plate (for STAUFF Group 1 to 6 only)
Code: **RAP**

Angled Weld Plate (for STAUFF Group 1 to 6 only)
Code: **WSP**

Bridge Weld Plate (for STAUFF Group 1A to 6 only)
Code: **BSP**

Installation on Mounting / Channel Rail

Hexagon Rail Nut
Code: **SM** (Carbon Steel)
Code: **SMG** (Stainless Steel)

Channel Rail Adaptor
Code: **CRA**

② Group Size & Diameter

Please select the required group size and diameter and add the corresponding Code to position ② of the order code for your clamp assembly.

Group STAUFF (DIN)	Outside Diameter P / T / H (mm)	Availability of Clamp Body Materials & Designs			Code
		Profilled	Type H	Type RI	
1 (0)	6	●	●	○	106
	6,4	●	●	○	106.4
	8	●	●	○	108
	9,5	●	●	○	109.5
	10	●	●	○	110
	12	●	●	○	112
1A (1)	6	●	●	○	106A
	6,4	●	●	○	106.4A
	8	●	●	○	108A
	9,5	●	●	○	109.5A
	10	●	●	○	110A
2 (2)	12	●	●	○	112A
	12,7	●	●	○	212.7
	13,5	●	●	○	213.5
	14	●	●	○	214
	15	●	●	○	215
	16	●	●	○	216
	17,2	●	●	○	217.2
	18	●	●	○	218
3 (3)	19	●	●	○	319
	20	●	●	○	320
	21,3	●	●	○	321.3
	22	●	●	○	322
	25	●	●	○	325
4 (4)	25,4	●	●	○	325.4
	6	○	○	●	406
	8	○	○	●	408
	10	○	○	●	410
	12	○	○	●	412
	12,7	○	○	●	412.7
	14	○	○	●	414
	15	○	○	●	415
	16	○	○	●	416
	17,2	○	○	●	417.2
	18	○	○	●	418
	19	○	○	●	419
	26,9	●	●	○	426.9
	28	●	●	○	428
28,6	●	○	○	428.6	
30	●	●	○	430	
32	●	●	○	432	

Group STAUFF (DIN)	Outside Diameter P / T / H (mm)	Availability of Clamp Body Materials & Designs			Code
		Profilled	Type H	Type RI	
5 (5)	32	●	●	○	532
	33,7	●	●	○	533.7
	35	●	●	○	535
	38	●	●	○	538
	40	●	●	○	540
	41,3	●	○	○	541.3
	42	●	●	○	542
	20	○	○	●	620
6 (6)	21,3	○	○	●	621.3
	22	○	○	●	622
	25	○	○	●	625
	26,9	○	○	●	626.9
	28	○	○	●	628
	30	○	○	●	630
	32	○	○	●	632
	44,5	●	●	○	644.5
	48,3	●	●	○	648.3
	50,8	●	●	○	650.8
7 (7)	54	●	●	○	654
	57,2	●	●	○	757.2
	60,3	●	●	○	760.3
	63,5	●	●	○	763.5
	70	●	●	○	770
	73	●	●	○	773
8 (8)	76,1	●	●	○	776.1
	88,9	●	●	○	888.9
	102	●	●	○	8102L

● Standard Option



Please see pages 32 and 33 with detailed order examples for some of the most popular Standard Series clamp assemblies.

③ Clamp Body Design & Material

Please select the design and material of your clamp body and add the corresponding Code to position ③ of the order code for your clamp assembly.

Please check the availability of the selected clamp body design and material according to the matrix table in ②.

Profiled Design



Polypropylene
Code: **PP**



Polypropylene (Colour: Black)
Code: **PP-BK**



Polyamide
Code: **PA**



Thermoplastic Elastomer (87 Shore-A)
Code: **SA**



Aluminium
Code: **AL** (for STAUFF Group 1A to 6 only)

Type H (Smooth)



Polypropylene
Code: **PP-H**



Polypropylene (Colour: Black)
Code: **PP-H-BK**



Polyamide
Code: **PA-H**



Thermoplastic Elastomer (87 Shore-A)
Code: **SA-H**

Type RI (with Elastomer Insert)



Polypropylene
Code: **PP-R** (for STAUFF Group 4 and 6 only)



Polyamide
Code: **PA-R** (for STAUFF Group 4 and 6 only)

See pages 154 / 155 for material properties and technical information.

Please contact STAUFF for further details on fire-proof clamp body materials, tested and approved according to several international fire-protection standards.

④ Mounting & Fitting Combination

Please select the mounting and fitting combination (e.g. bolts, screws, cover plates etc.) and add the corresponding Code to position ④ of the order code for your clamp assembly.

Installation with Cover Plate and Bolts

Cover Plate DP with
Hexagon Head Bolts AS
Code: **DP-AS**

Cover Plate DP with
Socket Cap Screws IS*
Code: **DP-IS**

Installation with Locking Plate and Bolts

Safety Locking Plate SIG with
Stacking Bolts AF
Code: **SIG-AF**

Installation with Inserts and Bolts

Inserts EP (Plastic) with
Hexagon Head Bolts AS
Code: **EP-AS**

Inserts ES (Steel) with
Hexagon Head Bolts AS
Code: **ES-AS**

Installation with Bolts only

Socket Cap Screws IS (Washers US included)
Code: **IS**

Slotted Head Screws LI (Washers US included)
Code: **LI** (for STAUFF Group 1 to 6 only)

* Special lengths of Socket Cap Screws IS required. For exact lengths, please see details of Hexagon Head Bolt, type AS (for use with Cover Plates DP) on page 26.

⑤ Thread Type

Please select the required thread type and add the corresponding Code to position ⑤ of the order code for your clamp assembly.

Metric ISO thread
Code: **M**

Unified coarse (UNC) thread
Code: **U**

All threaded parts are available with Metric ISO thread or unified coarse (UNC) thread according to dimension table.

⑥ Material & Surface Finishing

Please select the required material & surface finishing of the metal parts and add the corresponding Code to position ⑥ of the order code for your clamp assembly.

Metal parts made of Carbon Steel, zinc/nickel-plated **W3**

Metal parts made of Stainless Steel V2A
1.4301 / 1.4305 (AISI 304 / 303) **W4**

Metal parts made of Stainless Steel V4A
1.4401 / 1.4571 (AISI 316 / 316 Ti) **W5**

Weld Plate made of Carbon Steel, phosphated; Other metal parts made of Carbon Steel, zinc/nickel-plated **W10**

Individual combinations of alternative materials and surface finishings are available upon request. Contact STAUFF for further information.

⑦ Assembling & Kitting

If required, please select an additional assembling and kitting option and add the corresponding Code to the last position of the order code for your clamp assembly.

Components supplied separately

Code: **none** (standard option)

Components assembled

Code: **A** (special option)

Components packed in kits

Code: **K** (special option)

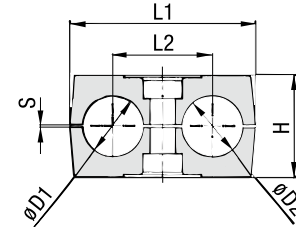
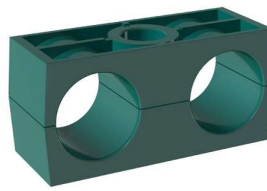
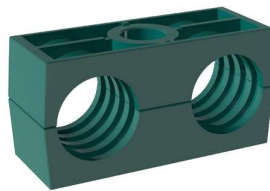


Clamp Body - Profiled Design

Profiled Inside Surface with Tension Clearance

Clamp Body - Type H

Smooth Inside Surface w/o Tension Clearance



C

Ordering Codes

Clamp Body

***1*06/06*-PP**

One clamp body is consisting of two clamp halves.

- * 1st Part of STAUFF Group **1**
- * Exact outside diameters Ø D1 / Ø D2 (mm) **06/06**
- * Material code (see below) **PP**

Designs & Standard Materials



Polypropylene - Profiled Design

Profiled inside surface with tension clearance
Colour: Green
Material code: **PP**



Polypropylene - Profiled Design

Profiled inside surface with tension clearance
Colour: Black
Material code: **PP-BK**



Polypropylene - Type H

Smooth inside surface without tension clearance
Colour: Green
Material code: **PP-H**



Polypropylene - Type H

Smooth inside surface without tension clearance
Colour: Black
Material code: **PP-H-BK**



Polyamide - Profiled Design

Profiled inside surface with tension clearance
Colour: Black
Material code: **PA**



Polyamide - Type H

Smooth inside surface without tension clearance
Colour: Black
Material code: **PA-H**

See pages 154 / 155 for properties and technical information.

Special Materials

Please contact STAUFF for further details on fire-proof clamp body materials, tested and approved according to several international fire-protection standards (such as BS 6853, EN 45545-2, UL 94 and many more).

See pages 156 / 157 for material properties and technical information.

Product Features

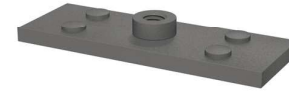
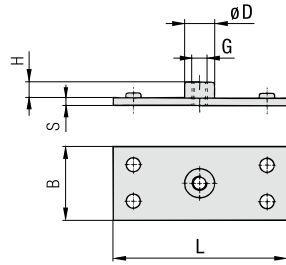
- Proven, tested and trusted product in various markets
- Profiled design recommended for the safe installation of rigid pipes and tubes; type H recommended for the safe installation of hoses and cables
- Available for all commonly used pipe and tube outside diameters
- Environmental protection due to vibration/noise reducing design
- Excellent weathering resistance, even under extreme conditions

Group	STAUFF	DIN	Outside Diameter		Nominal Bore	Ordering Codes	Dimensions (mm/in)							
			Pipe / Tube / Hose	Pipe			Copper Tube	(2 Clamp Halves)	L1	L2	H	Profiled Design		Type H
			Ø D1 / Ø D2	(mm)	(in)	(in)	(in)	(**-*- = Material)				S min.	H	
1D	1		6				106/06-***-							
			6,4	1/4			106.4/06.4-***-							
			8	5/16			108/08-***-	36	20	27	0,6	26,5	30	
			9,5	3/8		1/4	109.5/09.5-***-	1.42	.79	1.06	.02	1.04	1.18	
			10		1/8		110/10-***-							
			12			112/12-***-								
2D	2		12,7	1/2		3/8	212.7/12.7-***-							
			13,5		1/4		213.5/13.5-***-							
			14				214/14-***-							
			15				215/15-***-	53	29	27	0,7	26	30	
			16	5/8		1/2	216/16-***-	2.09	1.14	1.06	.03	1.02	1.18	
			17,2		3/8		217.2/17.2-***-							
			18				218/18-***-							
3D	3		19	3/4			319/19-***-							
			20				320/20-***-							
			21,3		1/2		321.3/21.3-***-	67	36	37	0,7	36,5	30	
			22	7/8		3/4	322/22-***-	2.64	1.42	1.46	.03	1.44	1.18	
			25				325/25-***-							
			25,4	1		325.4/25.4-***-								
4D	4		26,9		3/4		426.9/26.9-***-							
			28				428/28-***-	80	45	40	0,7	38	30	
			30				430/30-***-	3.15	1.77	1.57	.03	1.46	1.18	
5D	5		32	1-1/4			532/32-***-							
			33,7		1		533.7/33.7-***-							
			35			1-1/4	535/35-***-	106	56	53	0,7	52	30	
			38	1-1/2			538/38-***-	4.17	2.20	2.09	.03	2.04	1.18	
			40				540/40-***-							
			42		1-1/4	542/42-***-								

Additional outside diameters and combinations of different outside diameters are available upon request. Please contact STAUFF for further information.



Single Weld Plate
Type SP



C

Group STAUFF	DIN	Dimensions (mm/in)						Thread G	Ordering Codes (Standard Options)
		L	B	S	H	ØD			
1D	1	37	30	3	6,5	12	M6	SP-1D-M-W2	
		1.46	1.18	.12	.26	.47	1/4-20 UNC	SP-1D-U-W2	
2D	2	55	30	5	6	14	M8	SP-2D-M-W2	
		2.17	1.18	.20	.24	.55	5/16-18 UNC	SP-2D-U-W2	
3D	3	70	30	5	6	14	M8	SP-3D-M-W2	
		2.76	1.18	.20	.24	.55	5/16-18 UNC	SP-3D-U-W2	
4D	4	85	30	5	6	14	M8	SP-4D-M-W2	
		3.35	1.18	.20	.24	.55	5/16-18 UNC	SP-4D-U-W2	
5D	5	110	30	5	6	14	M8	SP-5D-M-W2	
		4.33	1.18	.20	.24	.55	5/16-18 UNC	SP-5D-U-W2	

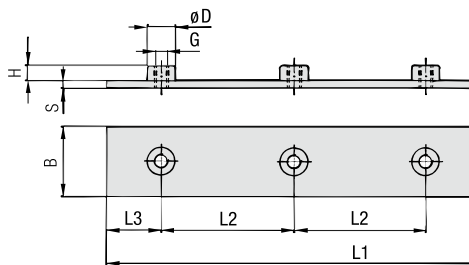
Ordering Codes

Weld Plate ***SP-*1D-*M-*W2**

- * Single Weld Plate **SP**
- * STAUFF Group **1D**
- * Thread code Metric ISO thread **M**
Unified coarse (UNC) thread **U**
- * Material code Carbon Steel, phosphated **W2**
Carbon Steel, zinc/nickel-plated **W3**
Stainless Steel V2A **W4**
1.4301 / 1.4305 (AISI 304 / 303) **W4**
Stainless Steel V4A **W5**
1.4401 / 1.4571 (AISI 316 / 316 Ti) **W5**

All threaded parts are available with Metric ISO thread or unified coarse (UNC) thread according to dimension table. Alternative materials and surface finishings are available upon request. Contact STAUFF for further information.

Group Weld Plate
for 5 Clamp Bodies
Type RAP



Group STAUFF	DIN	Dimensions (mm/in)						Thread G	Ordering Codes (Standard Options)	
		L1	L2	L3	B	S	H			ØD
1D	1	196	40	18	30	3	6,5	12	M6	RAP-1D-40-5-M-W1
		7.72	1.57	.71	1.18	.12	.26	.47	1/4-20 UNC	RAP-1D-40-5-U-W1
2D	2	288	58	28	30	5	6	14	M8	RAP-2D-58-5-M-W1
		11.34	2.28	1.10	1.18	.20	.24	.55	5/16-18 UNC	RAP-2D-58-5-U-W1
3D	3	358	72	35	30	5	6	14	M8	RAP-3D-72-5-M-W1
		14.09	2.83	1.37	1.18	.20	.24	.55	5/16-18 UNC	RAP-3D-72-5-U-W1
4D	4	444	90	42	30	5	6	14	M8	RAP-4D-90-5-M-W1
		17.48	3.54	1.65	1.18	.20	.24	.55	5/16-18 UNC	RAP-4D-90-5-U-W1
5D	5	558	112	55	30	5	6	14	M8	RAP-5D-112-5-M-W1
		21.97	4.41	2.16	1.18	.20	.24	.55	5/16-18 UNC	RAP-5D-112-5-U-W1

Ordering Codes

Weld Plate ***RAP-*1D-*40-*5-*M-*W1**

- * Group Weld Plate **RAP**
- * STAUFF Group **1D**
- * Pipe Center Spacing L2 (mm) **40**
- * Number of Clamps **5**
- * Thread code Metric ISO thread **M**
Unified coarse (UNC) thread **U**
- * Material code Carbon Steel, uncoated **W1**
Carbon Steel, phosphated **W2**
Carbon Steel, zinc/nickel-plated **W3**
Stainless Steel V2A **W4**
1.4301 / 1.4305 (AISI 304 / 303) **W4**
Stainless Steel V4A **W5**
1.4401 / 1.4571 (AISI 316 / 316 Ti) **W5**

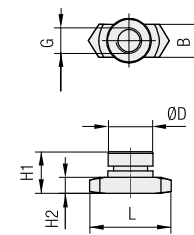
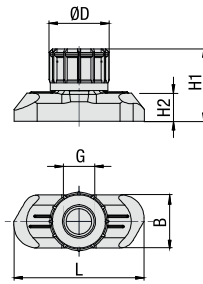
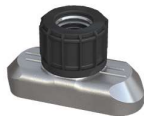
All threaded parts are available with Metric ISO thread or unified coarse (UNC) thread according to dimension table. Alternative materials and surface finishings are available upon request. Contact STAUFF for further information.



Hexagon Rail Nut

(for Use with Mounting Rail TS)

Type SM / SMG



STAUFF Group 1D

STAUFF Group 2D to 5D

STAUFF Group 1D

STAUFF Group 2D to 5D

Ordering Codes

Hexagon Rail Nut *SM-*1-8/1D-*M-*W3

* Hexagon Rail Nut

Carbon Steel **SM**
Stainless Steel **SMG**

* STAUFF Group 1D (DIN Group 1) **1-8/1D**
2D to 5D (DIN Group 2 to 5) **2-5D**

* Thread code Metric ISO thread **M**
Unified coarse (UNC) thread **U**

* Material code Carbon Steel, zinc/nickel-plated **W3**
Stainless Steel V2A **W4**
1.4301 / 1.4305 (AISI 304 / 303)
Stainless Steel V4A **W5**
1.4401 / 1.4571 (AISI 316 / 316 Ti)

Group STAUFF	DIN	Dimensions (mm/in)						ØD	Ordering Codes (Standard Options)
		Thread G	L	B	H1	H2			
1D	1	M6	25,5	10,4	14,2	5,5	12	SM-1-8/1D-M-W3	
		1/4-20 UNC	1.00	.41	.56	.22	.47	SM-1-8/1D-U-W3	
2D	2								
3D	3	M8	25,5	10,4	13	5	14	SM-2-5D-M-W3	
		5/16-18 UNC	1.00	.41	.51	.20	.55	SM-2-5D-U-W3	
4D	4								
5D	5								

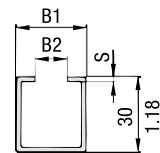
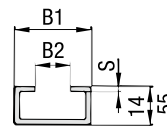
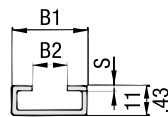
The Hexagon Rail Nut, type SM-1-8/1D is also suitable for Standard Series, STAUFF Group 1 to 8.

All threaded parts are available with Metric ISO thread or unified coarse (UNC) thread according to dimension table. Alternative materials and surface finishings are available upon request. Contact STAUFF for further information.

Mounting Rail

(for Use with Hexagon Rail Nut SM / SMG)

Type TS



Mounting Rail TS-11

Mounting Rail TS-14

Mounting Rail TS-30

Ordering Codes

Mounting Rail *TS-*11-*1M-*W1

* Mounting Rail **TS**

* Height of rail 11 mm / .43 in **11**
14 mm / .55 in **14**
30 mm / 1.18 in **30**

* Length of rail 1 m / 3.28 ft **1M**
2 m / 6.56 ft **2M**

Alternative lengths available upon request. Contact STAUFF for further information.

* Material code Carbon Steel, uncoated **W1**
Carbon Steel, hot-dip galvanised **W98**
Stainless Steel V2A **W4**
1.4301 / 1.4305 (AISI 304 / 303)
Stainless Steel V4A **W5**
1.4401 / 1.4571 (AISI 316 / 316 Ti)

Group STAUFF	DIN	Dimensions (mm/in)			Ordering Codes (Standard Options)	
		B1	B2	S	Length of Rail: 1 m / 3.28ft	Length of Rail: 2 m / 6.56ft
1D	1				Height 11 mm / .43 in TS-11-1M-W1	Height 11 mm / .43 in TS-11-2M-W1
2D	2					
3D	3	28	11	2	Height 14 mm / .55 in TS-14-1M-W1	Height 14 mm / .55 in TS-14-2M-W1
		1.10	.43	.08		
4D	4					
5D	5				Height 30 mm / 1.18 in TS-30-1M-W1	Height 30 mm / 1.18 in TS-30-2M-W1

Mounting Rails, type TS-11/14/30 are suitable for all Twin Series and Standard Series group sizes.

Alternative materials and surface finishings are available upon request. Contact STAUFF for further information.

Dimensional drawings: All dimensions in mm (in).





Please see page 63 with detailed order examples for some of the most popular Twin Series clamp assemblies.

C

① Type of Installation

Please select the type of installation (e.g. weld plates, rail nuts, etc.) and add the corresponding Code to position ① of the order code for your clamp assembly.

Without Installation Equipment
Code: **none**

Installation on Weld Plate

Single Weld Plate
Code: **SP**

Group Weld Plate
Code: **RAP**

Installation on Mounting / Channel Rail

Mounting Rail Nut
Code: **SM** (Carbon Steel)
Code: **SMG** (Stainless Steel)

Channel Rail Adaptor
Code: **CRA**

② Group Size & Diameters

Please select the required group size and diameter and add the corresponding Code to position ② of the order code for your clamp assembly.

Group	Outside Diameter	Availability of Clamp Body Materials & Designs		Code
		P / T / H (mm)	Profiled Design	
1D (1)	6		●	106/06
	6,4		●	106.4/06.4
	8		●	108/08
	9,5		●	109.5/09.5
	10		●	110/10
	12		●	112/12
2D (2)	12,7		●	212.7/12.7
	13,5		●	213.5/13.5
	14		●	214/14
	15		●	215/15
	16		●	216/16
	17,2		●	217.2/17.2
3D (3)	18		●	218/18
	19		●	319/19
	20		●	320/20
	21,3		●	321.3/21.3
	22		●	322/22
	25		●	325/25
4D (4)	25,4		●	325.4/25.4
	26,9		●	426.9/26.9
	28		●	428/28
	30		●	430/30
	32		●	532/32
	33,7		●	533.7/33.7
5D (5)	35		●	535/35
	38		●	538/38
	40		●	540/40
	42		●	542/42

③ Clamp Body Design & Material

Please select the design and material of your clamp body and add the corresponding Code to position ③ of the order code for your clamp assembly.

Please check the availability of the selected clamp body design and material according to the matrix table in ②.

Profiled Design

Polypropylene
Code: **PP**

Polypropylene (Colour: Black)
Code: **PP-BK**

Polyamide
Code: **PA**

Type H (Smooth)

Polypropylene
Code: **PP-H**

Polypropylene (Colour: Black)
Code: **PP-H-BK**

Polyamide
Code: **PA-H**

See pages 154 / 155 for material properties and technical information.

Please contact STAUFF for further details on fire-proof clamp body materials, tested and approved according to several international fire-protection standards.

④ Mounting & Fitting Combination

Please select the mounting and fitting combination (e.g. Bolts, Cover Plates, etc.) and add the corresponding Code to position ④ of the order code for your clamp assembly.

Installation with Cover Plate and Bolt

Cover Plate GD with Hexagon Head Bolt AS
Code: **GD-AS**

Cover Plate GD with Socket Cap Screw IS
Code: **GD-IS**

Installation with Locking Plate and Bolt

Safety Locking Plate SI with Stacking Bolt AF
Code: **SI-AF**

Safety Locking Plate SIV with Stacking Bolt AF
Code: **SIV-AF** (for STAUFF Group 1D to 3D only)

⑤ Thread Type

Please select the required thread type and add the corresponding Code to position ⑤ of the order code for your clamp assembly.

Metric ISO thread
Code: **M**

Unified coarse (UNC) thread
Code: **U**

All threaded parts are available with Metric ISO thread or unified coarse (UNC) thread according to dimension table.

⑥ Material & Surface Finishing

Please select the required material & surface finishing of the metal parts and add the corresponding Code to position ⑥ of the order code for your clamp assembly.

Metal parts made of Carbon Steel, zinc/nickel-plated **W3**

Metal parts made of Stainless Steel V2A 1.4301 / 1.4305 (AISI 304 / 303) **W4**

Metal parts made of Stainless Steel V4A 1.4401 / 1.4571 (AISI 316 / 316 Ti) **W5**

Weld Plate made of Carbon Steel, phosphated; Other metal parts made of Carbon Steel, zinc/nickel-plated **W10**

Individual combinations of alternative materials and surface finishings are available upon request. Contact STAUFF for further information.

⑦ Assembling & Kitting

If required, please select an additional assembling and kitting option and add the corresponding Code to the last position of the order code for your clamp assembly.

Components supplied separately
Code: **none** (standard option)

Components assembled
Code: **A** (special option)

Components packed in kits
Code: **K** (special option)

