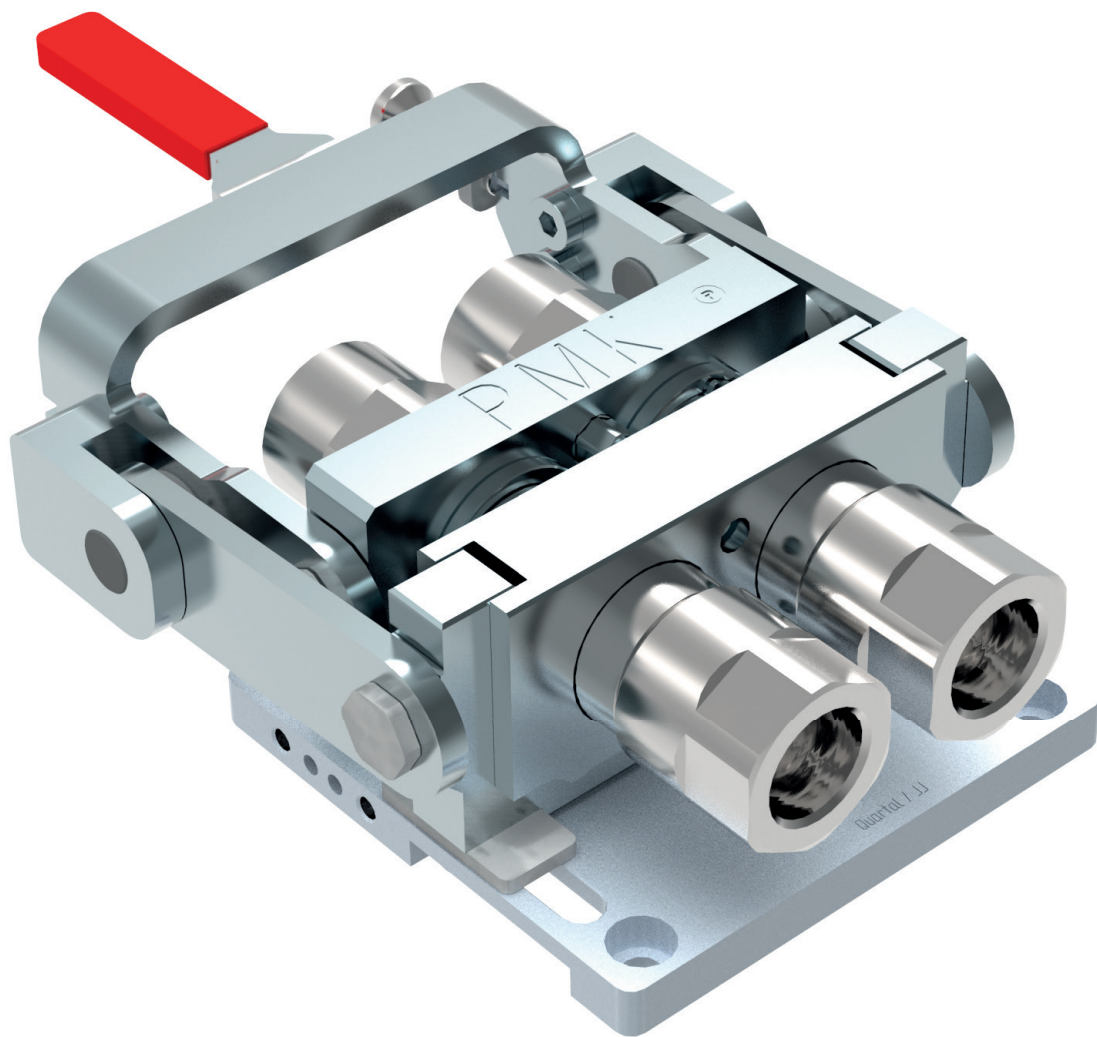


# PISTER MULTI-COUPLING SYSTEMS

Mechanic multi-couplings for all hydraulic applications in construction machinery

---



**PISTER**<sup>®</sup>  
Kugelhähne



1800-OILSOL  
1800-645765

<https://oilsolutions.com.au/>

[sales@oilsolutions.com.au](mailto:sales@oilsolutions.com.au)



# Special features of Pister multi-couplings

- Knee lever mechanism for optimum path-force progression (utility model protection)
- Multi-couplings are self-locking when closed
- Integrated detent kit
- DN20 with hydraulic locking preventing accidental opening under pressure
- Couplings of different sizes are possible in one system
- Individual coupling usage depending on the attachment – blind assignment with protective caps of unused cables
- Torsion protection for couplings (increased service life)



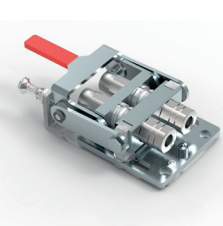
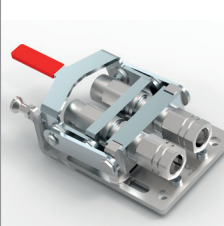
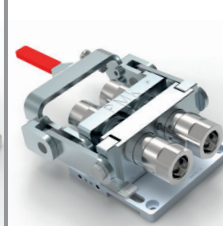
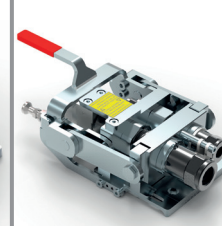
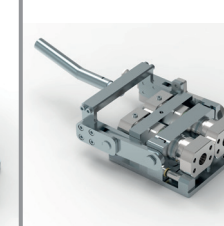


# Advantages of the Pister multi-couplings in use

- Mounted on the side of the boom to prevent excessive dirt penetration
- Extremely flat and compact design protects against damage
- Additional protection in uncoupled condition through parking station (for tool couplings) and protective plate (machine side)
- Use of hydraulic hammers and other demolition tools possible **without restriction**
- Reduced additional weight at the boom increases machine performance and saves fuel compared with automatic machines
- Simple mounting by means of adapter plates
- Only two sizes for excavators up to more than 40 t – maximum compatibility
- Non-drip couplings allow use in sensitive areas as well as in gardening and landscaping
- Existing tool inventory can be retrofitted without large and expensive conversion costs (an advantage when using rental tools)

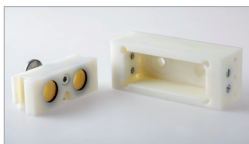


# Technical data of Pister multi-coupling systems

					
Designation	PMK-10/10-1 PMK-10-1	PMK-13/13-1 PMK-13-1 PMK-13/10/13-1	PMK-20/20-1	PMK 20HV/20HV-2  All possible two- and three-part variants	PMK-25/25 SAE
Coupling type	1	1	1	2	2
Flow (l/min) at $\Delta p$ 3 bar	50 l/min.	90 l/min.	170 l/min.	280 l/min.	650 l/min.
Flow (l/min) at $\Delta p$ 5 bar	75 l/min.	125 l/min.	220 l/min.	380 l/min.	800 l/min.
Operating pressure	330 bar	330 bar	330 bar	450 bar	375 bar
Range of application for excavators in t	1 - 3 t	2 - 9 t	only for wheel loaders and special machines	10 - 40 t	from 30 t boom separation

Subject to technical modifications

75-007-049



### Accessories:

- Protective plate (machine side)
- Parking station for protection in uncoupled condition (tool coupling)