

Welcome To **BUCHER** hydraulics

POWER UNITS

Our quality: We always adhere to the implementation of ISO9001 quality management system and continuously strengthen and improve internal management, as well as providing our customers with best quality products. Quality and service is our sincere commitment.



Search:

Position: Index >> Products

Gear Pumps and Gear Motors Power Units Hydraulic Valves Accessories

Power Units For Dock Leveler 6

Power Units For Dock Leveler 6

[General Description](#)

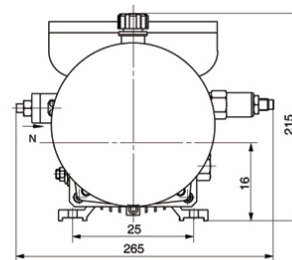
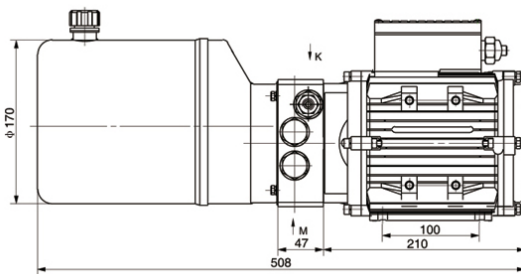
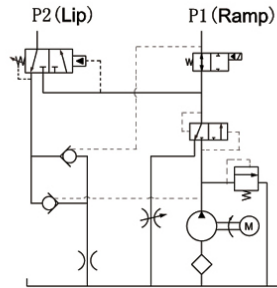


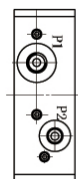
OIL SOLUTIONS

PO Box 38
Strathfieldsaye, VIC, 3551
1800 OIL SOL
1800 645 765
sales@oilsolutions.com.au
www.oilsolutions.com.au
"For All Your Hydraulic Needs"

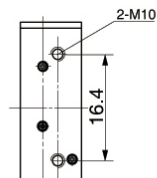
This power unit is designed for those dock levellers which need floating ramps with an emergency stop function. The ramp will rise when the pump is running. The lip will extend automatically when the ramp cylinder finishes its stroke. The ramp cylinder will retract when the pump stops running. An emergency stop will be realized while the solenoid valve is energized. The lowering speed of both the ramp and the lip is adjusted by the throttle valves in the system.

Outline Dimension





View K



View M



View N

Model Specifications

Model	Motor Volt	Motor power	Motor speed	Displacement	System pressure	Sequence pressure	Tank Capacity
YBZ-E2.1B4E84/1	380VAC	0.75KW	1450RPM	2.1mL/r	13MPa	8MPa	6L
YBZ-E2.7B4E84/1				2.7mL/r			

Remark: 1. Please go to page 38 or consult our sales engineer for the different pump displacement, motor power or tank capacity.

2. 60HZ motors with CSA or UL certification are available upon request.

Special Notes

- 1.The power unit is of S3 duty, which can only be worked intermittently, ie., 1minute on and 9 minutes off.
- 2.Clean all the hydraulic parts concerned before mounting the power unit.
- 3.Viscosity of the hydraulic oil should be 15-68 cst, which should also be clean and free of impurities.N46 hydraulic oil is recommended.
- 4.Check the oil level in the tank after the first start of the power unit.
- 5.Change the oil after the first 100 hours of running the power unit, then change the oil every 3000 hours.

Copyright: Bucher Hydraulics (Wuxi)Co.,Ltd. 编号: 苏ICP备18069474号-1