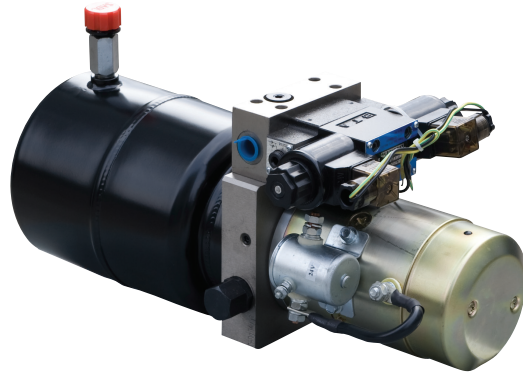


# 自卸车加盖动力单元 POWER UNITS FOR DUMPING TRUCK COVERING

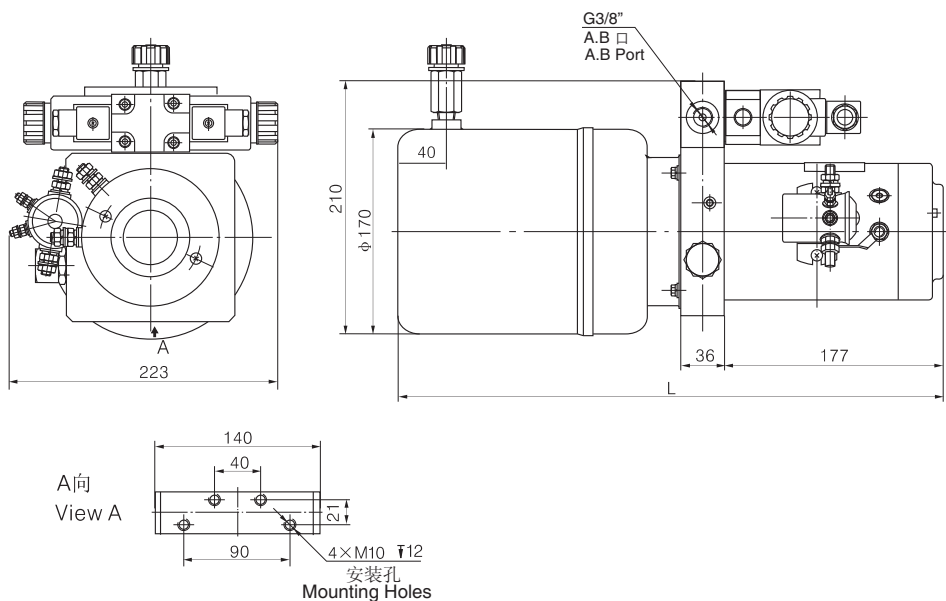
## 简介 General Description

此动力单元专为自卸车加盖改装而设计，采用高压齿轮泵、直流电机、多用集成块、电磁阀、油箱等零件组成系统。由电磁换向阀的换向来实现密封盖的启闭，密封盖的启闭速度由可调节节流阀进行调节。

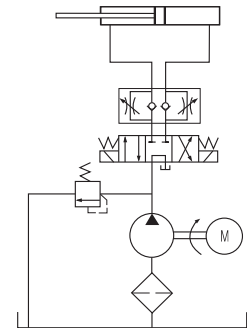
Used to operate a double action cylinder of the dumping truck covering machinery, this power unit consists of high pressure gear pump, DC motor, multi-functional manifold, valves and oil tank, ect. The opening and closing actions of the covers are controlled by a solenoid directional valve, while the speed is adjusted by the throttles.



## 外形尺寸图 Outline Dimension



## 系统工作原理 Hydraulic Circuit Diagram



## 型号规格说明 Model Specifications

Model 型号	Motor Volt 电机电压	Motor power 电机功率	Displacement 油泵排量	System pressure 溢流阀压力	Tank Capacity 油箱容量	L(mm)
YBZ-F1.6A1W8/1	12VAC	1.5KW	1.6mL/r	18MPa	3.5L	448
YBZ-F2.5B2A8/1	24VAC	2KW	2.5mL/r	18MPa	5L	463

说明：如需不同流量的泵、压力、电机功率等系统参数，请查看液压力单元型号说明。

Remark: Please go to page 38 or consult our sales engineer for the different pump displacement, motor power or tank capacity.

## 注意事项 Special Notes

1. 此动力单元为 S3 工作制，不可连续运转，30 秒开、270 秒停。
2. 按装前必须保证油缸、油管、接头等液压元件清洁无任何杂质粘附。
3. 液压油粘度应为 15 ~ 68CST，应清洁无杂质，推荐使用 N46 号液压油。
4. 本液压力单元适用于卧式安装。
5. 首次启动运行系统后，应立即检查油箱中的油量是否充足。
6. 系统使用第一个 100 小时后，应更换液压油，以后每 3000 小时更换一次液压油。

1. The duty of this power unit is S3, i.e., 30 seconds on and 270 seconds off.
2. Clean all the hydraulic parts concerned before mounting the power unit.
3. Viscosity of the hydraulic oil should be 15-68 cst, which should also be clean and free of impurities. N46 hydraulic oil is recommended.
4. The power unit should be mounted horizontally.
5. Check the oil level in the tank after the initial running of the power unit.
6. Change the oil after the first 100 hours of running the power unit, then change the oil every 3000 hours.