

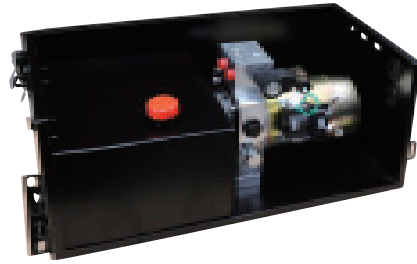
汽车尾板动力单元

POWER UNITS FOR VEHICLE TAILGATE

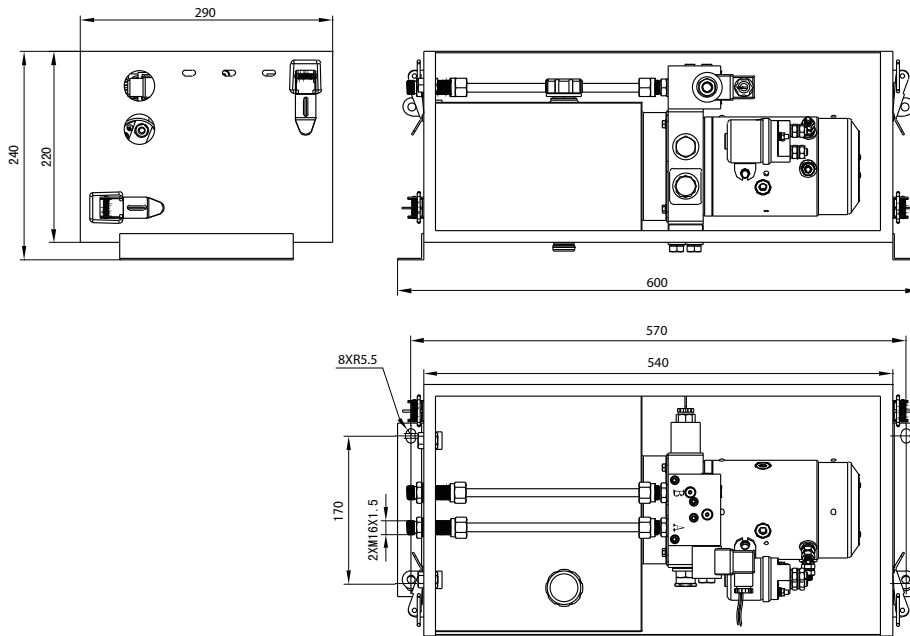
简介 General Description

此液压动力单元采用封闭式结构，用于卡车尾板的翻转和提升控制，下降速度由压力补偿流量阀自动调节。

With a closed architecture, this power unit is used to control the opening/closing and lifting/lowering of tailgates of trucks. The pressure compensated flow control valve is to regulate the opening and lowering speed automatically.

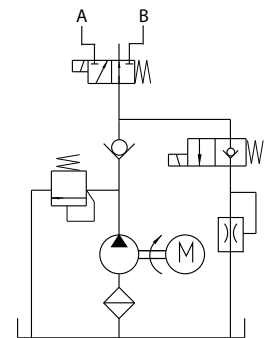


外形尺寸图 Outline Dimension



系统工作原理

Hydraulic Circuit Diagram



型号规格说明 Model Specifications

Model 型号	Motor Volt 电机电压	Motor power 电机功率	Rated Speed 名义转速	Displacement 油泵排量	System pressure 溢流阀压力	Tank Capacity 油箱容量
YBZ5-E2.5D2A70A/WUABT1	DC24V	2KW	2500rpm	2.5mL/r	16MPa	11L

说明：如需不同流量的泵、压力、电机功率等系统参数，请查看液压动力单元型号说明。

Remark: Please go to page 38 or consult our sales engineer for the different pump displacement, motor power or tank capacity.

注意事项 Special Notes

1. 此动力单元不可连续运转（1分钟ON，9分钟OFF），可重复工作。
2. 按装前必须保证油缸、油管、接头等液压元件清洁无任何杂质粘附。
3. 液压油粘度应为15~68CST，应清洁无杂质，推荐使用N46号液压油。
4. 系统使用第一个100小时后，应更换液压油，以后每3000小时更换一次液压油。
5. 本液压动力单元适用于水平安装。

1. The power unit is of S3 duty, which can only work intermittently and repeatedly, i.e., 1 minute on and 9 minutes off.
2. Clean all the hydraulic parts concerned before mounting the power unit.
3. Viscosity of the hydraulic oil should be 15~68 cst, which should also be clean and free of impurities. N46 hydraulic oil is recommended.
4. Oil changing is required after the initial 100 operation hours, afterwards once every 3000 hours.
5. The power unit should be mounted horizontally.