

医疗用微型动力单元

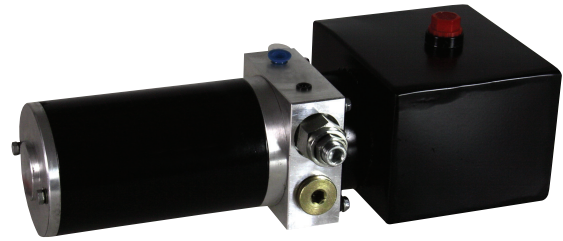
MINI POWER UNITS FOR MEDICAL CARE EQUIPMENT



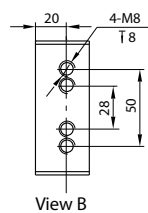
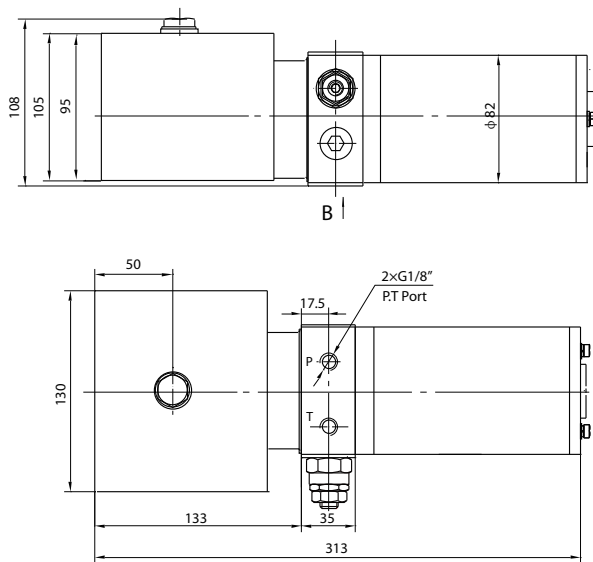
简介 General Description

此液压动力单元专为医疗设备中电动手术床设计，噪音小，低电流，个体轻盈，为手术床提供液压力源。同时适用于电动病床。

Serving as the power source of operating table, this power unit is designed exclusively for lifting the electrical operating table in the application of medical care equipments, whose features are low noise, low current and small size. Furthermore, it is applicable to sickbed.

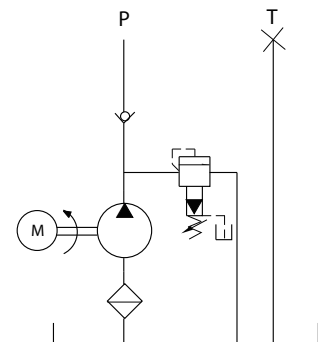


外形尺寸图 Outline Dimension



系统工作原理

Hydraulic Circuit Diagram



型号规格说明 Model Specifications

Model 型号	Motor Volt 电机电压	Rated Speed 名义转速	Displacement 油泵排量	System pressure 溢流阀压力	Tank Capacity 油箱容量
YBZ-C0.32W2X0/UUCOTL1	24V	2000rpm	0.32mL/r	6.5MPa	1L
YBZ-D0.26W2X0/UUCOTL1			0.26mL/r	10MPa	

说明：1.如需不同流量的泵、压力、电机功率等系统参数，请查看液压力单元型号说明。

Remark: 1. Please go to page 38 or consult our sales engineer for the different pump displacement, motor power or tank capacity.

注意事项 Special Notes

1. 此动力单元为S3工作制，不可连续运转，30秒开、270秒停。
2. 安装前必须保证油缸、油管、接头等液压元件清洁无任何杂质粘附。
3. 液压油粘度应为15~68CST，应清洁无杂质，推荐使用N46号液压油。
4. 本液压力单元适用于立式安装。
5. 首次启动运行系统后，应立即检查油箱中的油量是否充足。
6. 系统使用第一个100小时后，应更换液压油，以后每3000小时更换一次液压油。

1. The duty of this power unit is S3, i.e., 30 seconds on and 270 seconds off.
2. Clean all the hydraulic parts concerned before mounting the power unit.
3. Viscosity of the oil should be 15~68 cst, and the oil should be clean and free of impurities, N46 hydraulic oil is recommended.
4. This power unit should be mounted vertically.
5. Check the oil level in the tank after the initial operation of the power unit.
6. Oil changing is required after the initial 100 operation hours, afterwards once every 3000 hours.



1800-OILSOL
1800-645765

<https://oilsolutions.com.au/>

sales@oilsolutions.com.au