

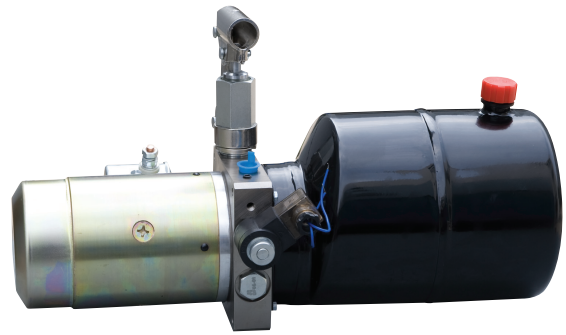
自卸拖车动力单元1

TIPPER TRAILER POWER UNITS 1

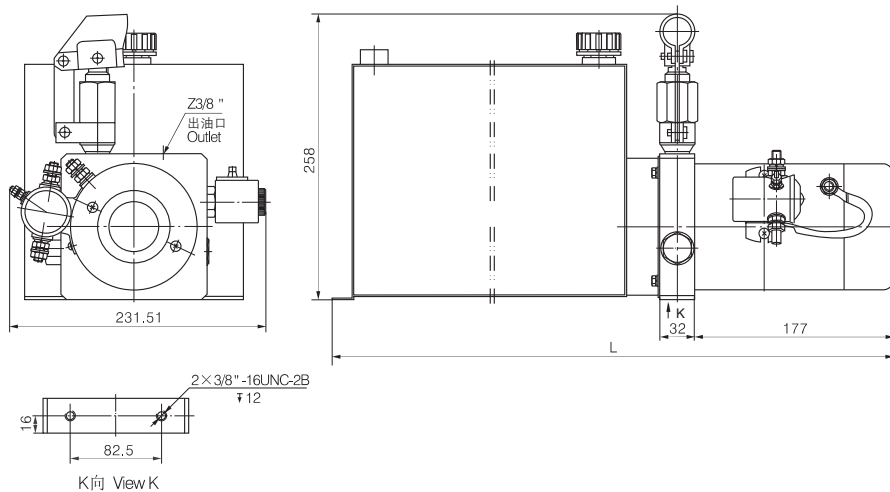
简介 General Description

此动力单元专为小型翻斗车设计，采用高压齿轮泵、直流电机、多用集成块、电磁阀、油箱等零件组成系统。在没有电时，手动泵可以实现上升动作，下降由电磁卸荷阀卸荷实现。

This power unit is designed exclusively for small tipper, consisting of high pressure gear pump, DC motor, multi-functional manifold, valves, etc. The hand pump with a displacement of 8cc per stroke works as a backup power source of lifting the tipper in case of power failure with the lowering movement is activated by the solenoid valve.

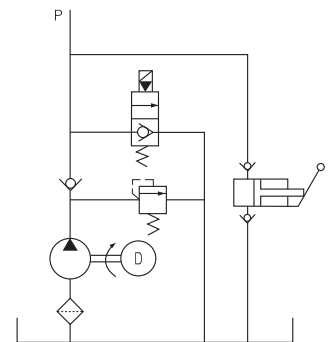


外形尺寸图 Outline Dimension



系统工作原理

Hydraulic Circuit Diagram



型号规格说明 Model Specifications

Model 型号	Motor Volt 电机电压	Motor power 电机功率	Rated Speed 名义转速	Displacement 油泵排量	System pressure 溢流阀压力	Tank Capacity 油箱容量	L(mm)
YBZ-F2.1E1W27/WUCAK1	12VDC	1.5KW	2500RPM	2.1mL/r	20MPa	12L	559
YBZ-F2.1H1W27/WUCAK1						20L	791
YBZ-F2.5E2A27/WUCBK1	24VDC	2.0KW		2.5mL/r	18MPa	12L	559
YBZ-F2.7H2A27/WUCBK1				2.7mL/r		20L	791

说明: 1.如需不同流量的泵、压力、电机功率等系统参数, 请查看液压动力单元型号说明。

2.如需手动应急放油装置, 请在订货时说明。

Remark: 1. Please go to page 38 or consult our sales engineer for the different pump displacement, motor power or tank capacity.

2. The manual override function is available on request.

注意事项 Special Notes

1. 此动力单元为 S3 工作制, 不可连续运转, 30 秒开、270 秒停。
2. 按装前必须保证油缸、油管、接头等液压元件清洁无任何杂质粘附。
3. 液压油粘度应为 15 ~ 68CST, 应清洁无杂质, 推荐使用 N46 号液压油。
4. 本液压动力单元适用于卧式安装。
5. 首次启动运行系统后, 应立即检查油箱中的油量是否充足。
6. 系统使用第一个 100 小时后, 应更换液压油, 以后每 3000 小时更换一次液压油。

1. The duty of this power unit is S3, i.e., 30 seconds on and 270 seconds off.
2. Clean all the hydraulic parts concerned before mounting the power unit.
3. Viscosity of the hydraulic oil should be 15~68 cst, which should also be clean and free of impurities. N46 hydraulic oil is recommended.
4. The power unit should be mounted horizontally.
5. Check the oil level in the tank after the initial operation of the power unit.
6. Oil changing is required after the initial 100 operation hours, afterwards once every 3000 hours.