

自卸拖车动力单元 3

TIPPER TRAILER POWER UNITS 3

简介 General Description

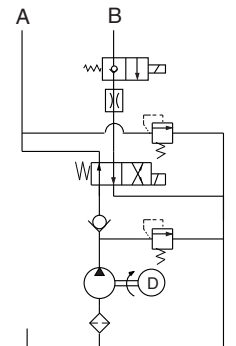
此液压动力单元由高齿轮油泵、直流电机、多用集成块、液压阀、油箱、有线控制器等零部件有机结合为一体，系典型的动力上升、动力下降液压回路。系统的第二溢流阀实现对下降压力的控制，压力补偿流量阀自动对下降速度的调整。本产品广泛应用于小型自卸车、液压绞车。

Consisting of high pressure gear pumps, DC motor, manifold, valves, tank, remote controller etc., this power unit features typical power up power down. The second relief valve provides an extra protection for the machine when lowered. The lowering speed is automatically adjusted by a pressure compensated flow control valve. These series are widely used in tipper trailers, hydraulic hoists and so on.

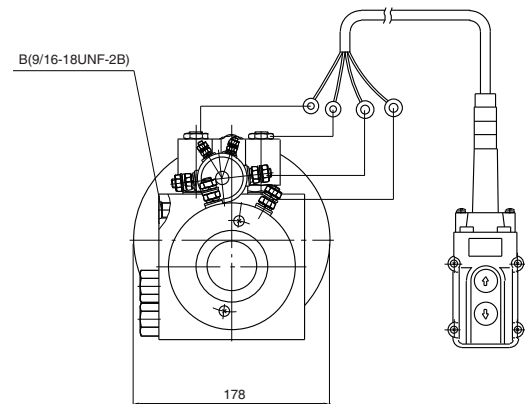
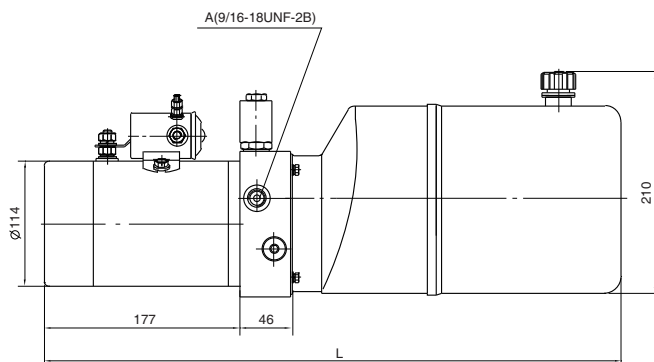


系统工作原理

Hydraulic Circuit Diagram



外形尺寸图 Outline Dimension



型号规格说明 Model Specifications

Model 型号	Motor Volt 电机电压	Motor power 电机功率	Displacement 油泵排量	System pressure 溢流阀压力	Tank Capacity 油箱容量	L(mm)
YBZ-F2.1B1W61/2	12VDC	1.5KW	2.1mL/r	20MPa	5L	473
YBZ-F2.7B2A61/2	24VDC	2KW	2.7mL/r		6L	523

说明：如需不同流量的泵、压力、电机功率等系统参数，请查看液压动力单元型号说明。

Remark: Please go to page 38 or consult our sales engineer for the different pump displacement, motor power or tank capacity.

注意事项 Special Notes

1. 此动力单元为S3工作制，不可连续运转，30秒开、270秒停。
2. 按装前必须保证油缸、油管、接头等液压元件清洁无任何杂质粘附。
3. 液压油粘度应为15~68CST，应清洁无杂质，推荐使用N46号液压油。
4. 系统使用第一个100小时后，应更换液压油，以后每3000小时更换一次液压油。
5. 本液压动力单元适用于水平安装。

1. The duty of this power unit is S3, i.e., 30 seconds on and 270 seconds off.
2. Clean all the hydraulic parts concerned before mounting the power unit.
3. Viscosity of the hydraulic oil should be 15~68 cst, which should also be clean and free of impurities. N46 hydraulic oil is recommended.
4. Oil changing is required after the initial 100 operation hours, afterwards once every 3000 hours.
5. The power unit should be mounted horizontally.