

Welcome To **BUCHER** hydraulics

POWER UNITS

Our quality: We always adhere to the implementation of ISO9001 quality management system and continuously strengthen and improve internal management, as well as providing our customers with best quality products. Quality and service is our sincere commitment.



Search:

Position: Index >> Products

Gear Pumps and Gear Motors Power Units Hydraulic Valves Accessories

CB-E Gear Pumps

CB-E Gear Pumps

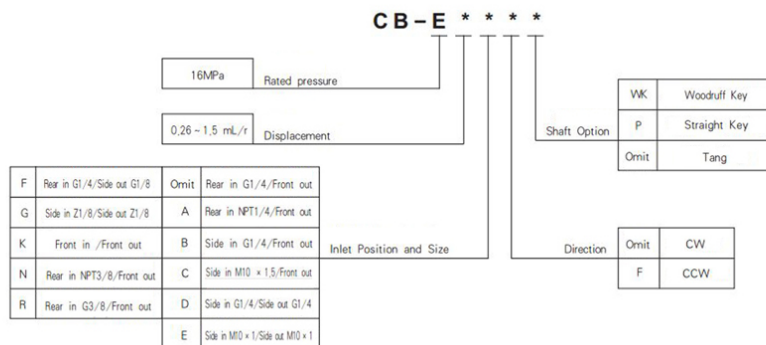
General Description



Small in displacement, the CB-E pump consists of a gear pair supported by two aluminum bearing blocks, a housing, front cover and rear cover. The features of CB-E pump have small dimension, low weight, high mechanical and volumetric efficiency as well as low noise level. It has been widely used in small hydraulic systems of medium/high pressure for a majority of applications.

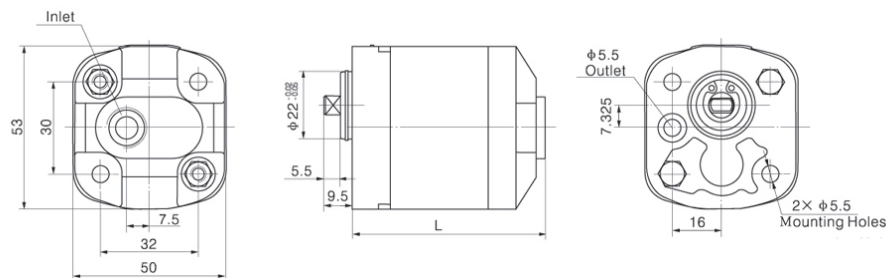
Notes: The CB-E gear pump has four inlet/outlet positions: rear in/front out, side in/ front out, side in/side out, rear in/side out. Both CW and CCW direction pumps are available.

Order Code



Outline Dimension

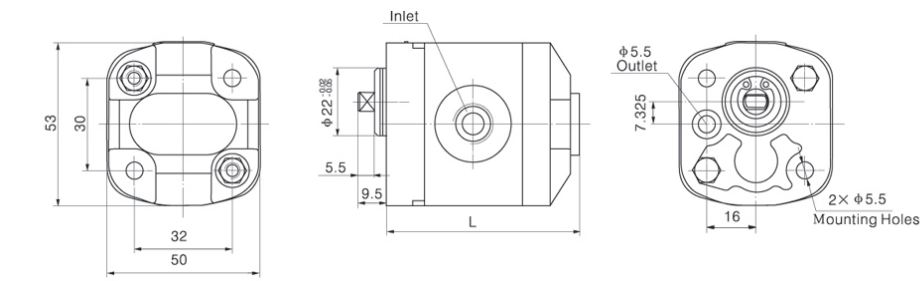
Rear in/Front out



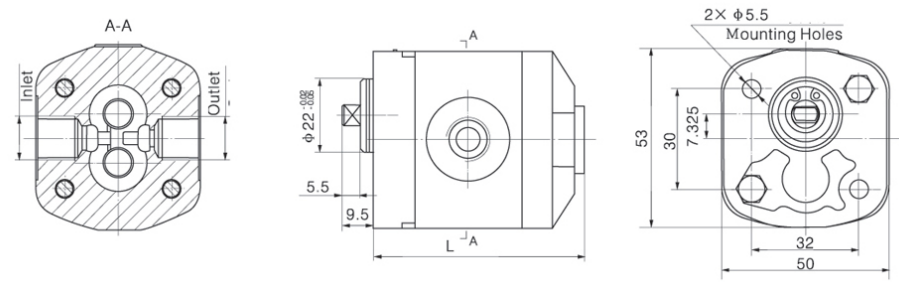
Side in/Front out



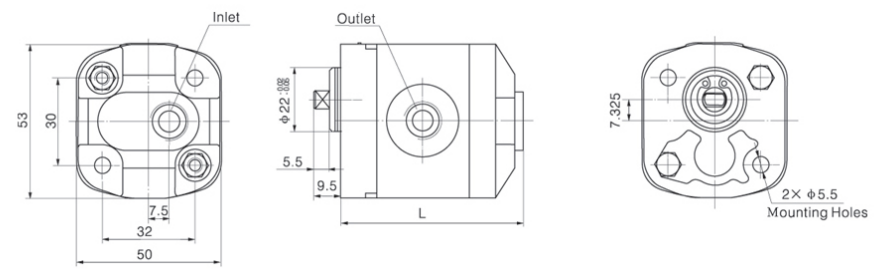
OIL SOLUTIONS  
PO Box 38  
Strathfieldsaye, VIC, 3551  
1800 OIL SOL  
1800 645 765  
[sales@oilsolutions.com.au](mailto:sales@oilsolutions.com.au)  
[www.oilsolutions.com.au](http://www.oilsolutions.com.au)  
"For All Your Hydraulic Needs"



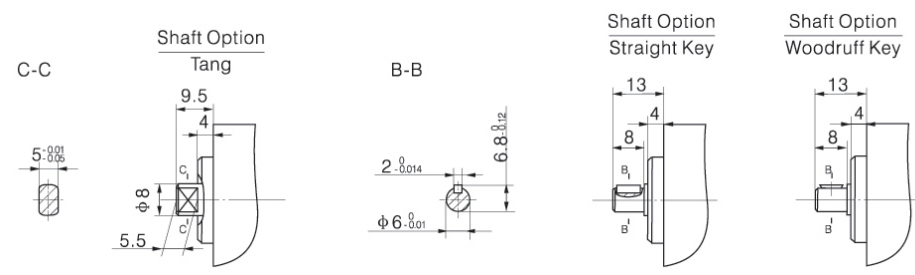
Side in/Side out



Rear in/Side out



Shaft Option



Technical Data

Model	Displacement mL/r (in <sup>3</sup> /r)	pressure (MPa)			Speed (RPM)	Dimension L (mm)	Efficiency
		P1	P2	P3			
CB-E0.26***	0.27 (0.0165)	16	18	20	3000	61.2	82%
CB-E0.32***	0.33 (0.0201)					61.7	
CB-E0.38***	0.39 (0.0238)					62.2	
CB-E0.5***	0.49 (0.0299)					63	
CB-E0.6***	0.61 (0.037)					64	85%
CB-E0.63***	0.64 (0.039)					64.2	
CB-E0.75***	0.76 (0.046)					65.2	
CB-E0.88***	0.88 (0.0537)					66.2	
CB-E1.00***	1.00 (0.061)					67.2	86%
CB-E1.25***	1.25 (0.0763)					69.2	
CB-E1.5***	1.54 (0.094)					71.5	
CB-E1.9***	1.91 (0.1165)					74.5	88%