

Welcome To **BUCHER** hydraulics

POWER UNITS

Our quality: We always adhere to the implementation of ISO9001 quality management system and continuously strengthen and improve internal management, as well as providing our customers with best quality products. Quality and service is our sincere commitment.



Search:

Position: Index >> Products

Gear Pumps and Gear Motors **Power Units** **Hydraulic Valves** **Accessories**

CBK Gear Pumps

CBK Gear Pumps

General Description

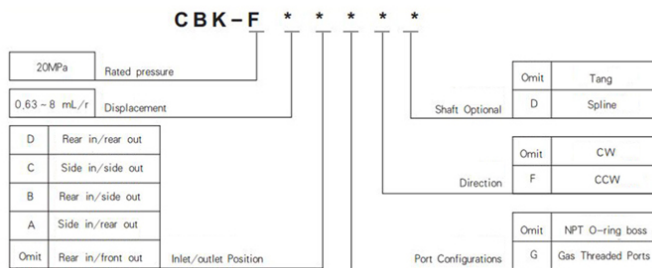


The CBK gear pump consists of a gear pair supported by two aluminum bearing blocks, a housing, front cover and rear cover.

The axis clearance can be automatically compensated by the bearing blocks. The CBK pump features high mechanical and volumetric efficiency, low noise level as well as low weight/power ratio.

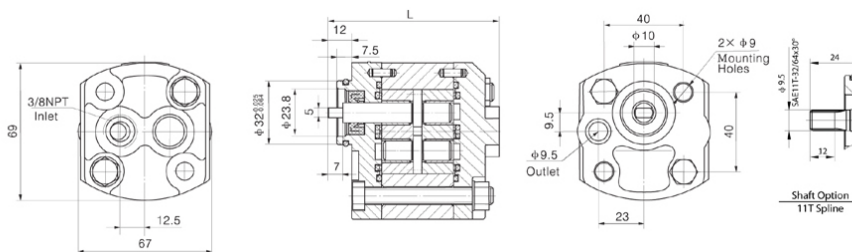
Notes: The CBK gear pump has five options of inlet/outlet positions: rear in/front out, side in/rear out, rear in/side out, side in/side out, rear in/rear out. Both CW and CCW direction pump are available.

Order Code



Outline Dimension

CBK-F*F Outline Dimension (Rear in/front out)

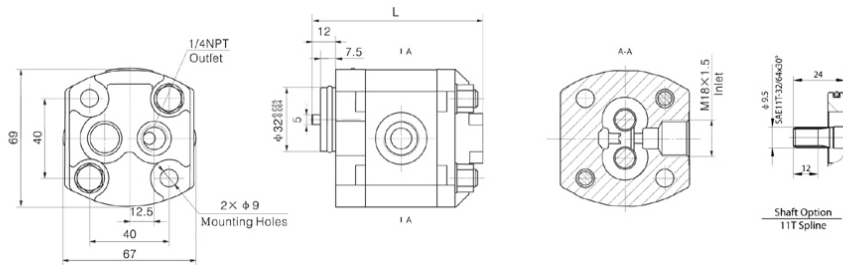


CBK-F*AF Outline Dimension (Side in/rear out)

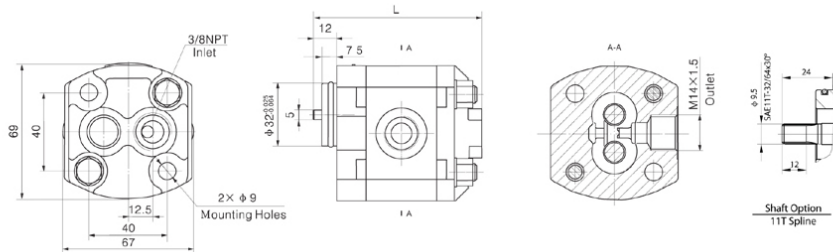


OIL SOLUTIONS

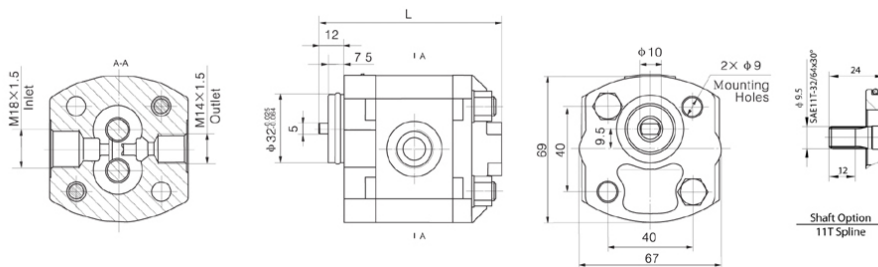
PO Box 38
Strathfieldsaye, VIC, 3551
1800 OIL SOL
1800 645 765
sales@oilsolutions.com.au
www.oilsolutions.com.au
"For All Your Hydraulic Needs"



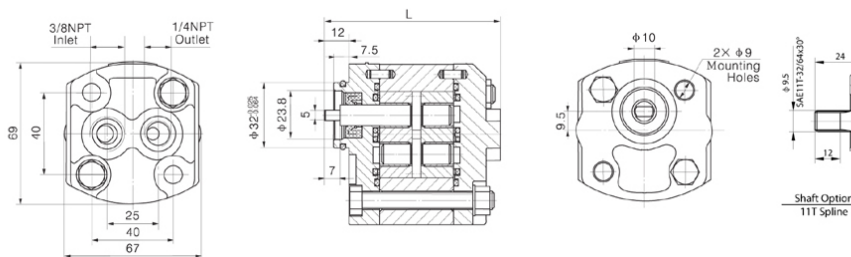
CBK-F'B Outline Dimension (Rear in/side out)



CBK-F'CF Outline Dimension (Side in/side out)



CBK-F'DF Outline Dimension (Rear in/rear out)



Technical data

Model	Displacement mL/r(in ³ /r)	pressure (MPa)			Speed (RPM)		(mm)	Efficiency
		P1	P2	P3	Rated	Max		
CBK-F0.63**	0.63 (0.038)	20	25	28	2000	4000	84.5	85%
CBK-F0.8**	0.89 (0.054)						85.5	
CBK-F1.2**	1.27 (0.078)						87	
CBK-F1.5**	1.487 (0.091)						87.8	
CBK-F1.6**	1.66 (0.101)						87.5	
CBK-F2.0**	2.05 (0.125)						88.5	
CBK-F2.1**	2.17 (0.132)						90	
CBK-F2.5**	2.56 (0.156)						92	
CBK-F2.7**	2.8 (0.171)						93	
CBK-F3.2**	3.32 (0.203)						95	
CBK-F3.7**	3.8 (0.232)	18	23	26	2000	3600	97	89%
CBK-F4.2**	4.3 (0.263)						99	
CBK-F5**	5.1 (0.311)						102	
CBK-F6**	6.03 (0.368)						105.5	
CBK-F7**	8.08 (0.493)	10	14	18	1500	3000	113.5	90%