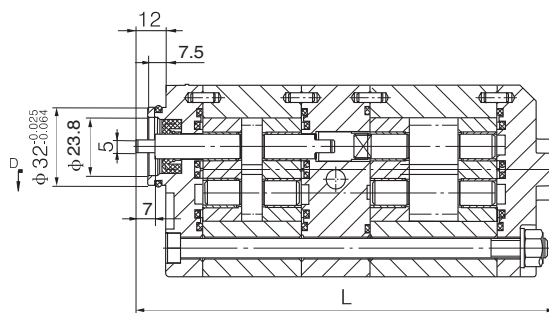
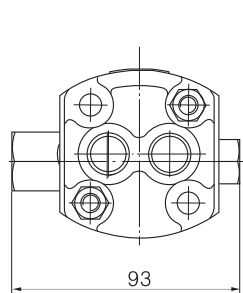
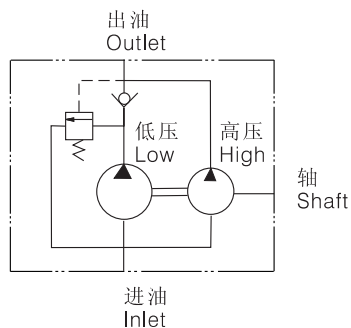


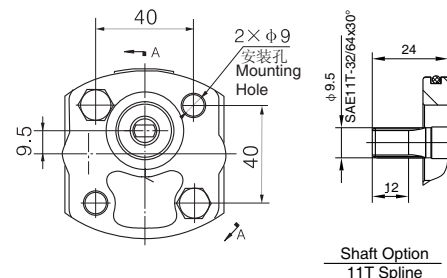
Section D-D

泵体进油 / 泵体出油 Side In/Side Out

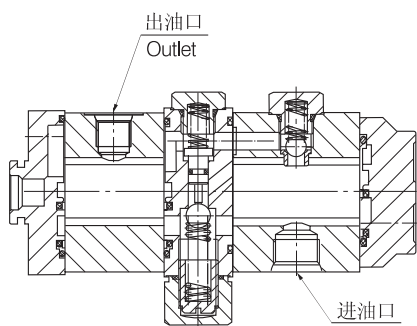
液压系统图 Hydraulic Schematic



Section A-A

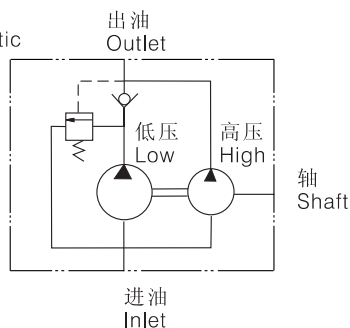


Shaft Option 11T Spline



Section D-D

液压系统图 Hydraulic Schematic



技术参数 Technical Data

Model 型号	Flow @ 1800 RPM 流量 L/min (GPM)	排量 Displacement mL/(in ³ /r)		压力 Pressure (MPa)		Speed 转速 (RPM)	尺寸 Dimension
		低压 low pre	高压 high pre	溢流阀 Unload	工作压力 Work		L(mm)
CBK-C2.1**/F0.8**	5.50 (1.453)	2.17 (0.132)	0.89 (0.054)	范围: Range: 1.4-6.3	21	1800	154
CBK-C3.2**/F1.2**	8.26 (2.182)	3.32 (0.203)	1.27 (0.078)				160
CBK-C3.7**/F1.2**	9.2 (2.430)	3.84 (0.234)	1.27 (0.078)				162
CBK-C4.2**/F0.8**	9.34 (2.468)	4.3 (0.262)	0.89 (0.054)				162.5
CBK-C4.2**/F1.6**	10.72 (2.832)	4.3 (0.262)	1.66 (0.101)				165.5
CBK-C5**/F1.2**	11.47 (3.030)	5.1 (0.311)	1.27 (0.078)				167
CBK-C5**/F2.1**	13.08 (3.456)	5.1 (0.311)	2.17 (0.132)				170.5
CBK-C6**/F2.1**	14.76 (3.900)	6.03 (0.368)	2.17 (0.132)				174

性能曲线图

Performance curve(@1800RPM,N46 oil)

