

Welcome To **BUCHER** hydraulics

POWER UNITS

Our quality: We always adhere to the implementation of ISO9001 quality management system and continuously strengthen and improve internal management, as well as providing our customers with best quality products. Quality and service is our sincere commitment.



Search:

Position: Index >> Products

- [Gear Pumps and Gear Motors](#)
- [Power Units](#)
- [Hydraulic Valves](#)
- [Accessories](#)

[CBKA Gear Pumps](#)

CBKA Gear Pumps

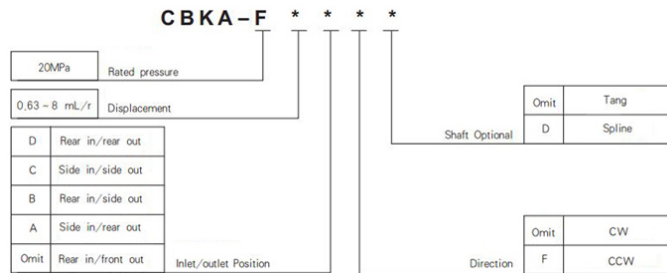


General Description

The CBKA gear pump consists of a gear pair supported by two aluminum bearing blocks, a housing, front cover and rear cover. The axis clearance can be automatically compensated by the bearing blocks. The CBKA pumps' features are high mechanical and volumetric efficiency, low noise level as well as low weight/power ratio.

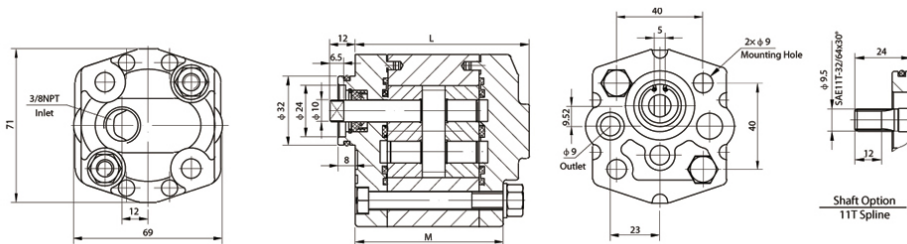
Notes: The CBKA series gear pumps have five options of inlet/outlet position: rear in/front out, side in/rear out, rear in/ side out, side in/ side out, rear in/ rear out. Both CW and CCW direction pumps are available.

Order Code



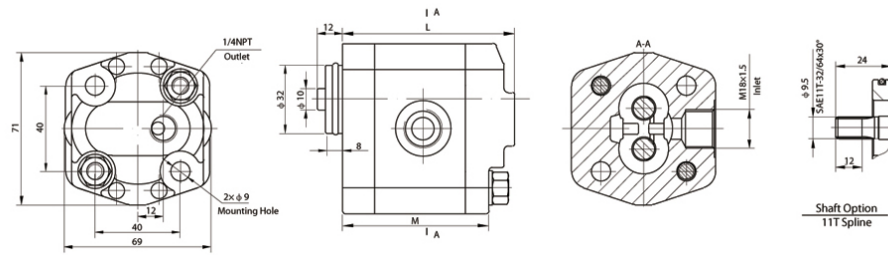
Outline Dimension

CBKA-F*F Outline Dimension (Rear in/front out)

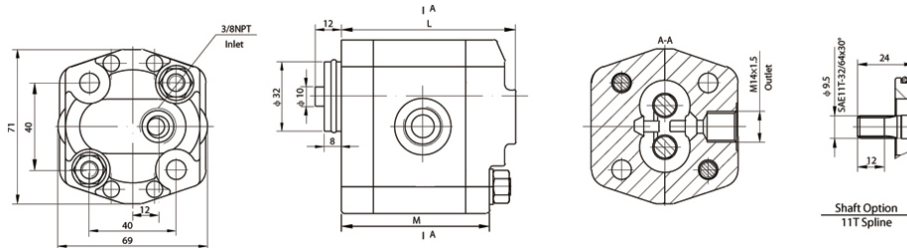


CBKA-F*AF Outline Dimension (Side in/rear out)

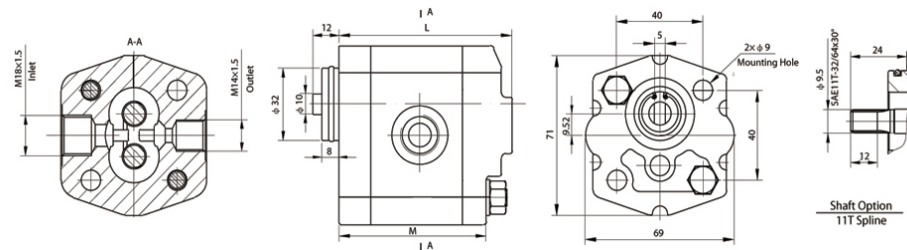




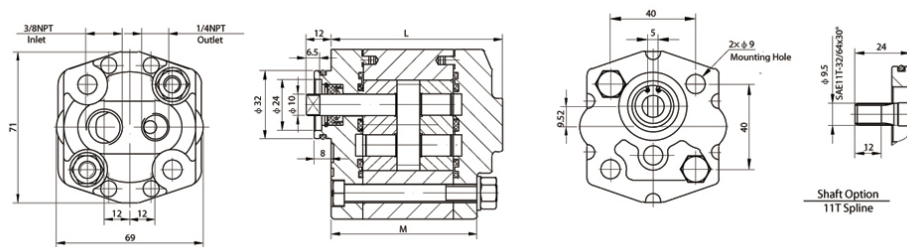
CBKA-F*B Outline Dimension (Rear in/side out)



CBKA-F*CF Outline Dimension (Side in/side out)



CBKA-F*DF Outline Dimension (Rear in/rear out)



Technical Data

Model	Displacement mL/r(in ³ /r)	Pressure (MPa)			Speed (RPM)		Dimension		Efficiency
		P1	P2	P3	Rated	Max	L(mm)	M(mm)	
CBKA-F0.63**	0.66(0.040)	20	25	28	2000	4000	72.5	60.5	85%
CBKA-F0.8**	0.87(0.053)						73.3	61.3	
CBKA-F1.2**	1.27(0.077)						74.8	62.8	
CBKA-F1.6**	1.66(0.101)						76.3	64.3	86%
CBKA-F2.1**	2.11(0.129)						78	66	
CBKA-F2.5**	2.51(0.153)						79.5	67.5	
CBKA-F2.7**	2.77(0.169)	80.5	68.5	88%					
CBKA-F3.2**	3.17(0.193)	82	70						
CBKA-F3.7**	3.7(0.225)	84	72						
CBKA-F4.2**	4.23(0.258)	18	23	26	2000	3600	86	74	89%
CBKA-F5**	5.0(0.305)						89	77	
CBKA-F6**	6.0(0.366)	14	18	23	1500	3000	93	81	
CBKA-F8**	8.0(0.488)						100.5	88.5	