

# CB2A 齿轮泵 GROUP2 GEAR PUMPS

## 简介 General Description

CB2A 齿轮泵系高压小排量齿轮油泵，由一对高强度齿轮、轴套、泵体、前盖、后盖等主要部件组成，轴向间隙由高精度浮动轴套自动补偿，使得CB2A 齿轮泵具有高的机械效率和容积效率，该泵噪音低、可靠性高，低的重量 / 功率比。该系列泵具有顺时针，逆时针两种旋向。

The CB2A gear pump consists of a gear pair supported by two aluminum bearing blocks, a housing, front cover and rear cover. The axial clearance can be automatically compensated by the bearing blocks. The CB2A pump features simple structure, high mechanical and volumetric efficiency, low noise, high reliability as well as low weight/power ratio. Its bi-directional feature makes it suitable for closed hydraulic circuit, being able to change the direction of the actuator without employing a directional valve.

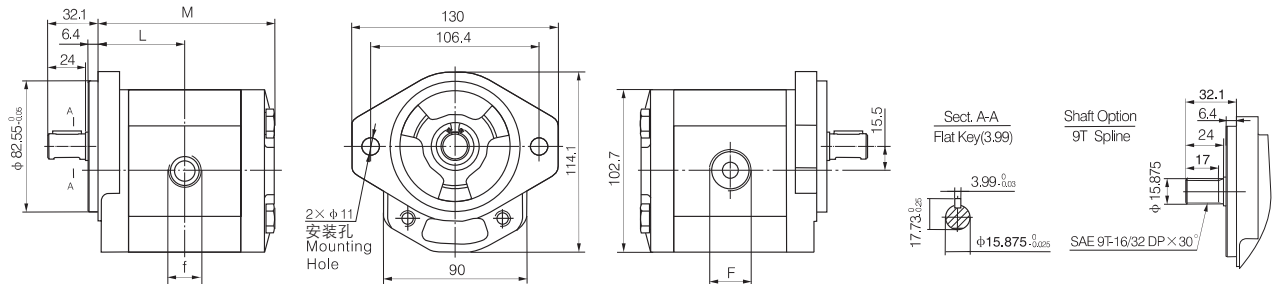


## 型谱 Order Code

**CB2A - F \* \* \* \***

20MPa	额定压力 Rated Pressure				
4 ~ 35mL/r	公称排量 Displacement				
空白或 S Omit or S	SAE 油口 SAE O-ring boss	油口形式 Port Configurations	轴端形式 Shaft Option	空白 Omit	9 齿花键 9T Spline
A	管螺纹 (BSPP) Gas Threaded Ports (BSPP)		A	平键 (3.99mm) Flat key (3.99mm)	
B	公制螺纹 Metric Threaded Ports				
			旋向 Direction	空白 Omit	右旋 CW
				F	左旋 CCW

## 外形尺寸图 Outline Dimension



## 技术参数 Technical Data

Model 型号	Displacement 排量 mL/r(in <sup>3</sup> /r)	压力 pressure (MPa)			转速 Speed (RPM)		尺寸 Dimension							
		P1	P2	P3	Rated 额定	Max 最大	L(mm)	M(mm)	F 进油口 Inlet	f 出油口 Outlet				
CB2A-F4 ***	4.47 (0.273)	20	25	28	2000	4000	45.6	93.2	SAE 口 SAE port 1 1/16-12UN	SAE 口 SAE port 7/8-14UN				
CB2A-F6 ***	6.37 (0.389)						47.1	96.3						
CB2A-F7 ***	7.04 (0.428)						47.7	97.4						
CB2A-F9 ***	9.55 (0.584)						49.6	101.3						
CB2A-F11 ***	11.49 (0.701)						1500	2200	1500	1800	51.3	104.6	公制口 Metric port M27X2	公制口 Metric port M22X2
CB2A-F14***	14.04 (0.857)										53.4	108.9		
CB2A-F15***	15.92 (0.934)										54.9	111.9		
CB2A-F17***	17.76 (1.050)										56.4	114.9		
CB2A-F21***	21.07 (1.285)	18	20	22	1500	2000	59.1	120.3	1 5/16-12UN G1"	1 1/16-12UN G3/4"				
CB2A-F23***	23.27 (1.441)						60.9	123.9						
CB2A-F28***	28.05 (1.713)						64	130.1						
CB2A-F32***	31.88 (1.946)	15	17	19	1500	1800	68.1	138.2	M33 × 2	M27 × 2				
CB2A-F35***	35.06 (2.141)						70.6	143.2						