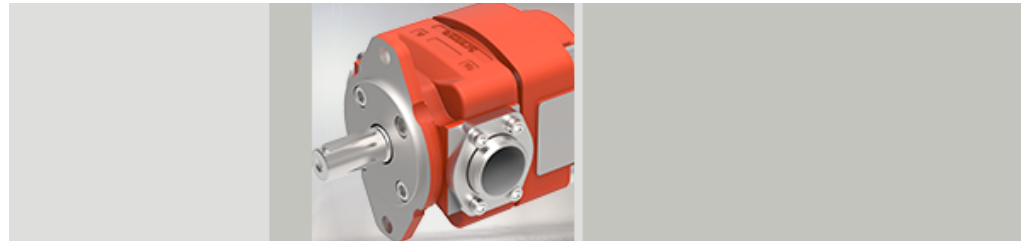


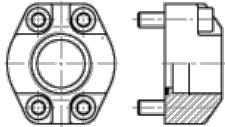
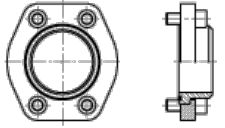
### Mobile and Industrial Hydraulics

[Applications](#)
[Products](#)
[Pumps](#)
[External Gear Pumps AP](#)
[External Gear Pumps Series Wuxi](#)
[Internal Gear Pumps QX](#)
[Internal Gear Pumps QXEH](#)
[Internal Gear Pumps QXEHX](#)
[Internal Gear Pumps QXV \(Low Viskose\)](#)
[Metering Pump QXP](#)
[Internal Gear Unit QXM for motor/pump service](#)
[Internal Gear Unit QXEM for motor/pump service](#)
[Axial Piston Pumps AX](#)
[Accessories](#)
[Mounting valve](#)
[Pipe flanges](#)
[Motors](#)
[Valves](#)
[Power Units](#)
[Electronics](#)
[Cylinders](#)
[System Solutions](#)
[Mobile Drives](#)
[Elevator Hydraulics](#)
[Hydraulic Drives for High-voltage Switch Gear](#)
[Dyna-Lift](#)

## Pipe Flanges



### Technical Data

Symbol	Type	Thread size	SAE-pattern
 <p><b>Heavy duty models to 420 bar</b> SAE 3000 pattern</p> <p>Threaded pipe flanges are spot-faced for DIN 2353 tube fittings.</p>	RF 01-R08	G 1/2"	-
	RF 02-R10	G 3/4"	-
	RF 03-R11	G 1"	-
	RF 04-R12	G 1 1/4"	-
	RF 05-R13	G 1 1/2"	-
	RF 06-R14	G 2"	-
	RF 07-R16	G 2 1/2"	-
 <p><b>Low pressure models to 16 bar</b> SAE 3000 pattern</p> <p>We recommend the use of seamless steel tube to DIN 2391.</p>	RN 07-S	-	2 1/2"
	RN 08-S	-	3"
	RN 09-S	-	3 1/2"
	RN 10-S	-	4"



OIL SOLUTIONS

**PO Box 38**

**Strathfieldsaye, VIC, 3551**

**1800 OIL SOL**

**1800 645 765**

**[sales@oilsolutions.com.au](mailto:sales@oilsolutions.com.au)**

**[www.oilsolutions.com.au](http://www.oilsolutions.com.au)**

**"For All Your Hydraulic Needs"**

---

Environment and Sustainability

---

Dyna-Lift ®

Hydraulic drives for high-voltage switch gear

Students / Technician-, Bachelor- Master-Theses

Recruiting Events

---

[Privacy Policy](#) | [Imprint](#) | [Cookie settings](#) | © Bucher Hydraulics GmbH | All rights reserved.