

PZ2AG Group 2 Gear Pumps



TIMALCO HYDRAULICS

www.timalco.com.au



- High volumetric efficiency.
- Wide range of capacities: 4-6-8-11-14-17-20-25-31cm³/rev.
- Extruded Aluminium body.
- Cast Iron Covers and Special Bushings.
- Low noise operation due to accurate projection of gear tooth profile.
- Large range of flanges, shafts, and ports available.
- High Temperature seals available.

Part Number	CC p/rev	Length MM	Porting	
			Pressure	Suction
PZ2AG04C034TD	4.40	88	1/2" BSPP	1/2" BSPP
PZ2AG06C034TD	6.28	91	1/2" BSPP	1/2" BSPP
PZ2AG08C034TD	8.16	94	1/2" BSPP	1/2" BSPP
PZ2AG11C034TD	11.30	107	1/2" BSPP	1/2" BSPP
PZ2AG14C035TD	14.45	112	1/2" BSPP	3/4" BSPP
PZ2AG17C035TD	16.95	116	1/2" BSPP	3/4" BSPP
PZ2AG20C035TD	20.10	121	1/2" BSPP	3/4" BSPP
PZ2AG25C035TD	25.75	130	1/2" BSPP	3/4" BSPP
PZ2AG31C035TD	31.40	139	1/2" BSPP	3/4" BSPP

Left Hand Rotation available on Request

Type		04	06	08	11	14	17	20	25	31
Capacity	Cm ³ /rev	4.4	6.28	8.16	11.3	14.45	16.95	20.1	25.75	31.4
P1 Max Working Pressure	Bar	300	300	300	300	300	250	210	160	130
P2 Max Peak Pressure	Bar	360	360	360	360	330	310	270	210	150
Max Speed for P1 Pressure	Rpm	4500	4500	3700	3300	2700	2500	2500	2500	2200
Max Speed without Load	Rpm	5500	5500	4700	4000	3300	3000	3000	3000	2700
Min Speed for P1 Pressure	Rpm	1000	700	550	450	400	350	300	250	200



1800-OILSOL
1800-645765

<https://oilsolutions.com.au/>

sales@oilsolutions.com.au

Model Identification Code

PZ2-AG 04 C 0 34 D

Model
 PZ2-AG ITALIAN STYLE
 PZ2-BG GERMAN STYLE
 PZ2-CG SAE STYLE
 PZ2-DG DEUTZ/IHC STYLE
 PZ2-EG REAR/TANG DRIVE

SHAFT
 A TAPER 1:5
 B SPLINED 9T DIN
 C TAPER 1:8
 E PARALLEL 15MM
 F TANG
 L PARALLEL 5/8"
 S SPLINED 9T SAE A

MODEL
 0= PZ2-AG
 1= PZ2-BG
 2= PZ2-EG
 3= PZ2-DG
 4= PZ2-CG

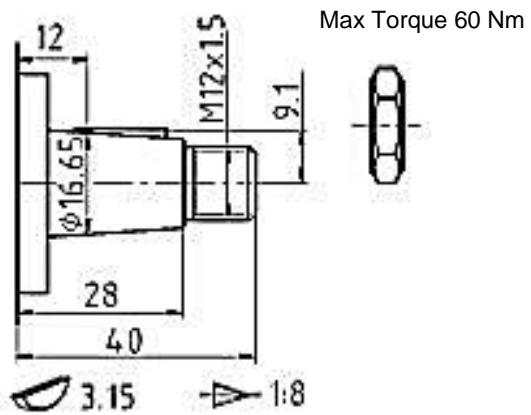
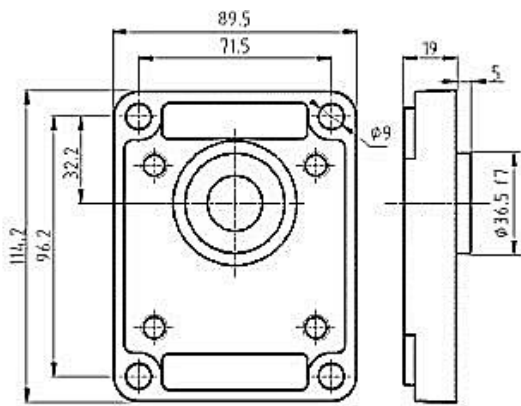
ROTATION
 D= RIGHT HAND
 S= LEFT HAND
 R= REVERSIBLE

TYPE – CAPACITY cc/rev
 04/06/08/11/14/17/20/25/31

PORTS
 32-FLANGE TYPE-4/6/8/11
 33-FLANGE TYPE 14/17/20/25/31
 34-BSPP TYPE- 4/6/8/11
 35-BSPP TYPE- 14/17/20/25/31
 36 FLANGE ALL
 41-BSPP TYPE-14/17/20/25/31

Flanges

Shafts

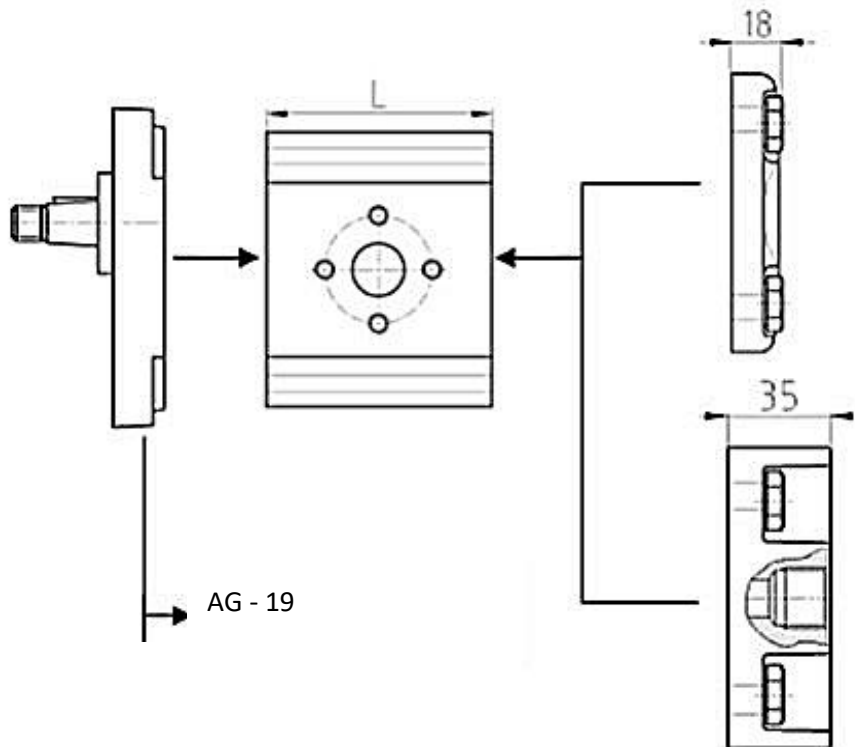


Max Torque 60 Nm

Max Torque 150 Nm

Material: Cast Iron

Overall Dimensions



Type	L
04	51
06	54
08	57
11	70
14	75
17	79
20	84
25	93
31	102



08 8262 4333



Timalco Hydraulics



timalcohyd

General Specifications

Hydraulic Fluids	Mineral Oil (DIN 51524) For use with fire resistant fluids like water glycol, water- emulsion and phosphate esters, contact our technical or commercial office.
Inlet Pressure	0.7 – 3 Bar (Absolute)
Oil Speed on Suction Line	0.5 – 1.5 m/s
Oil Speed on Pressure Line	6 – 10 m/s
Oil Temperature	-10 Deg C – 80 Deg C
Oil Viscosity	20 – 120mm ² /s (Cst)
Max Starting viscosity	700 mm ² /s (Cst)

Shaft Load Capacity

Shaft Code	Shaft Description	Max Torque (Nm)	Important When applying a multiple pump, the drive shaft load is the sum of torque of each section. This value can not exceed the value in the table.
A	1:5 Taper	110	
B	Din 5482 B17 x 14 Spline	110	
C	1:8 Taper	150	
E	15mm Str Keyed	75	
F	Tang	75	
L	5/8" Str Keyed	75	
M	Tang	75	
N	19mm Str Keyed	110	
S	SAE A 9T Spline	75	



08 8262 4333



Timalco Hydraulics



timalcohyd