

# Pulsation damper

**RE 29253/06.05**  
Replaces: 04.04

1/4

## Type SYPD



H7189/04

Type SYPD 0001

H7119/03

Type SYPD 0002

### Series 2X

Nominal pressure 400 bar (type SYPD 0001)

Nominal pressure 300 bar (type SYPD 0002)

## Table of contents

### Contents

Merkmale

Ordering code

Unit dimensions

### Page

1

2

3

## Features

### Application

SYPD pulsation dampers operate according to the reflection principle and are used in hydraulic systems that incorporate displacement pumps, where noise is transmitted predominantly through liquid-borne sound.

### Rating

SYPD pulsation dampers are designed for a basic frequency of 450 Hz and, at this frequency, block the transmission of noise > 24 dB. This rating is ideal for pumps of types A10VSO and A4VSO at a drive speed of  $n = 1500 \text{ min}^{-1}$ .

### Installation

The installation position of the damper is optional, with the direction of flow having to be observed. It should be arranged as closely as possible to the pump outlet.

To prevent the transmission of mechanical vibration to the system, it is required to install the pulsation damper so that it is isolated from structure-borne noise and to connect one connection side using a flexible hose.

Information on available spare parts:  
[www.boschrexroth.com/spc](http://www.boschrexroth.com/spc)

## Ordering code

### Pulsation damper for A4VSO

SYPD 0001-2X/400 F450 \*

Series 20 to 29 (20 to 29: unchanged technical data and pin assignment) = 2X

Nominal pressure 400 bar = 400

#### Pump type and size

A4VSO: Sizes 40 and 71 = V071

A4VSO: Sizes 125 and 180 = V180

A4VSO: Sizes 250 and 355 = V355

A4VSO: Sizes 500 and 750 = V750

Pulsation frequency 450 Hz = F450

Further details in clear text

#### Connection version for V071

01 = Thread to DIN ISO 228 for V180, V355, V750

11 = SAE flange (high-pressure series)

M = NBR seals suitable for mineral oil (HL, HLP) to DIN 51 524

V = FKM seals suitable for phosphate ester (HFD-R)

### Pulsation damper for A10VSO

SYPD 0002-2X/300 F450 01 \*

Series 20 to 29 (20 to 29: unchanged technical data and pin assignment) = 2X

Nominal pressure 300 bar = 300

#### Pump type and size

A10VSO: Sizes 18, 28, 45 and 71 = V018

A10VSO: Sizes 100 and 140 = V100

Pulsation frequency 450 Hz = F450

Further details in clear text

#### Connection version

01 = Thread to DIN ISO 228

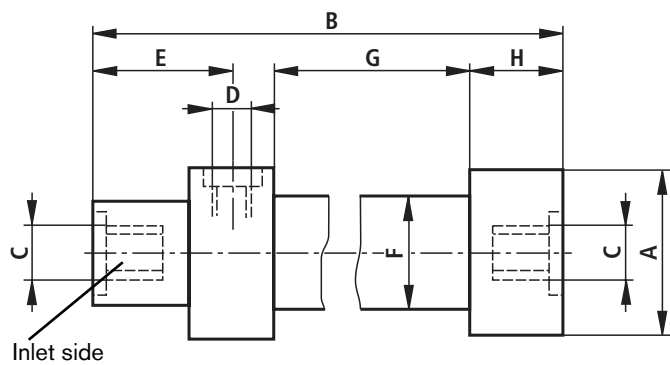
M = NBR seals suitable for mineral oil (HL, HLP) to DIN 51 524

V = FKM seals suitable for phosphate ester (HFD-R)

**Unit dimensions (in mm)**

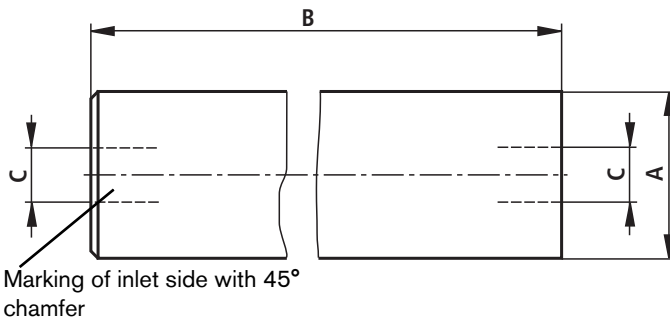
**SYPD 0001**

for A4VSO size 40 and size 71

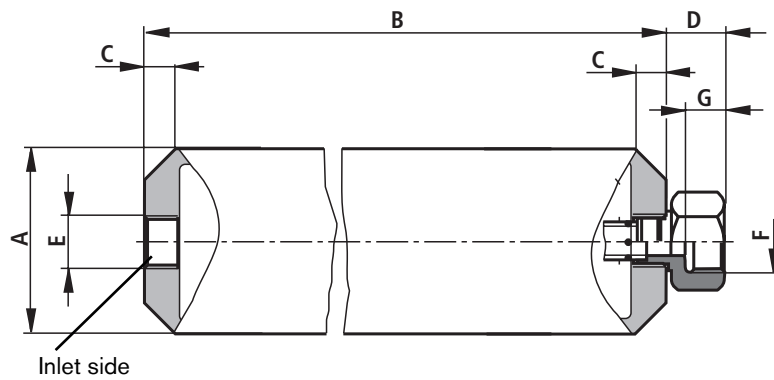


	Pump sizes			
	40, 71	125, 180	250, 355	500, 750
A	Ø 125	Ø 160	Ø 160	Ø 160
B	925	854	854	854
C	G 1 1/4	SAE 1 1/4"	SAE 1 1/2"	SAE 2"
D	G 1 1/4			
E	81			
F	Ø 83			
G	~ 720			
H	~ 75			

for A4VSO sizes 125 to 750



**SYPD 0002 für A10VSO**



	Pump size	
	18, 28, 45, 71	100, 140
A	Ø 114,3	Ø 114,3
B	794	794
C	25 x 45°	25 x 45°
D	38	39
E	G 1	G 1 1/4
F	G 1 1/4	G 1 1/2
G	26.5	28.5

## Notes

---