

Welcome To **BUCHER** hydraulics

**POWER UNITS**

Our quality: We always adhere to the implementation of ISO9001 quality management system and continuously strengthen and improve internal management, as well as providing our customers with best quality products. Quality and service is our sincere commitment.



Search:

Position: Index >> Products

**Gear Pumps and Gear Motors    Power Units    Hydraulic Valves    Accessories**

DC Motor Pump Group 2

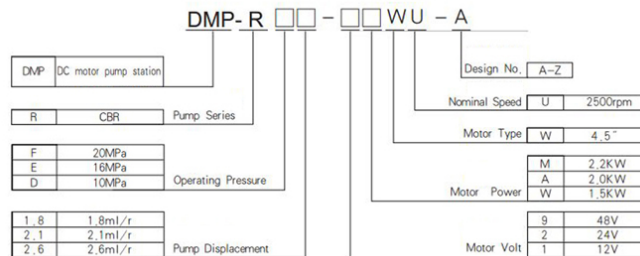
## DC Motor Pump Group 2

[General Description](#)

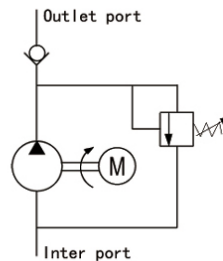


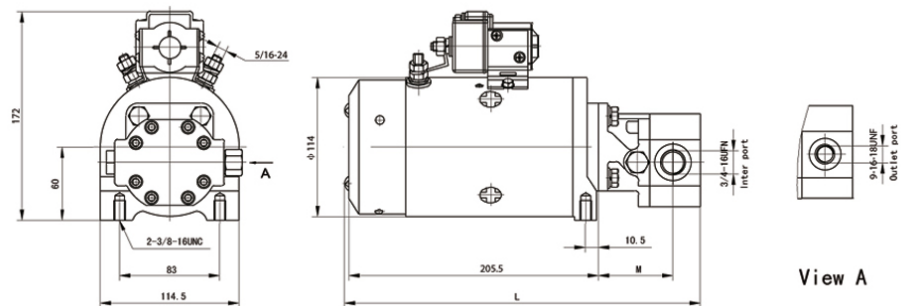
This motor pump consists of a 4.5±DC motor, a CBR gear pump with built-in relief valve and check valve. As a hydraulic power unit, it is widely used in hydraulic systems on mobile machines.

### Order Code



### Outline Dimension





#### Technical Data

Model	Motor Volt	Motor Power	Displacement	Speed	Operating pressure	Dimension(mm)	
						M	L
DMP-RE1.8-1WWU-A	12V	1.5KW	1.8mL/r	2500rpm	16MPa	65.3	299.3
DMP-RE2.1-2AWU-A	24V	2KW	2.1mL/r				300.3
DMP-RE2.1-2MWU-A		2.2KW	2.6mL/r		301.8		
DMP-RD2.6-2MWU-A			2.1mL/r		300.3		
DMP-RE2.1-9MWU-A	48v				16MPa	65.3	300.3

#### Special Notes

- 1.The power unit is of S3 duty, which can only work intermittently and repeatedly,i.e., 1minute on and 9 minutes off.
- 2.Clean all the hydraulic parts concerned before mounting the power unit.
- 3.Viscosity of the oil should be 15-68 cst,and the oil should be clean and free of impurities,N46 hydraulic oil is recommended .
- 4.The pump station should be mounted horizontally.
- 5.The relief valve pressure is preset about 25% higher than the operating pressure.

Copyright: Bucher Hydraulics (Wuxi)Co.,Ltd. 编号: 苏ICP备18069474号-1