

Welcome To **BUCHER** hydraulics

POWER UNITS

Our quality: We always adhere to the implementation of ISO9001 quality management system and continuously strengthen and improve internal management, as well as providing our customers with best quality products. Quality and service is our sincere commitment.



Search:

Position: Index >> Products

Gear Pumps and Gear Motors Power Units Hydraulic Valves Accessories

DC Motor Pump Group 2

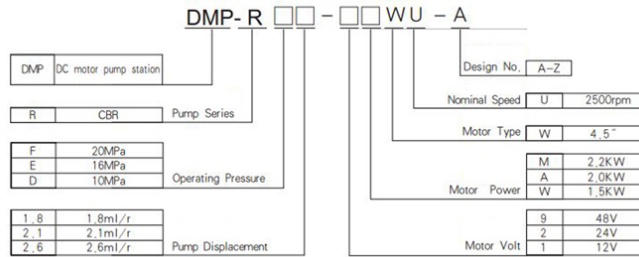
DC Motor Pump Group 2

[General Description](#)

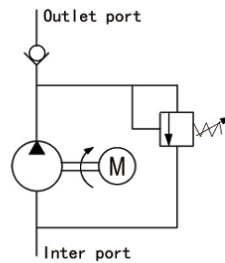


This motor pump consists of a 4.5±DC motor, a CBR gear pump with built-in relief valve and check valve. As a hydraulic power unit, it is widely used in hydraulic systems on mobile machines.

Order Code



Outline Dimension



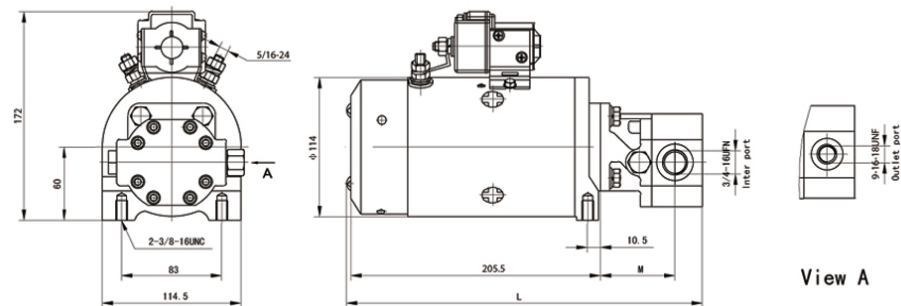
OIL SOLUTIONS

PO Box 38
Strathfieldsaye, VIC, 3551
1800 OIL SOL
1800 645 765

sales@oilsolutions.com.au

www.oilsolutions.com.au

"For All Your Hydraulic Needs"



Technical Data

Model	Motor Volt	Motor Power	Displacement	Speed	Operating pressure	Dimension(mm)	
						M	L
DMP-RE1.8-1WWU-A	12V	1.5KW	1.8mL/r	2500rpm	16MPa	65.3	299.3
DMP-RE2.1-2AWU-A	24V	2KW	2.1mL/r				300.3
DMP-RE2.1-2MWU-A		2.2KW	2.6mL/r		301.8		
DMP-RD2.6-2MWU-A			2.1mL/r		300.3		
DMP-RE2.1-9MWU-A	48v				16MPa	65.3	300.3

Special Notes

- 1.The power unit is of S3 duty, which can only work intermittently and repeatedly,i.e., 1minute on and 9 minutes off.
- 2.Clean all the hydraulic parts concerned before mounting the power unit.
- 3.Viscosity of the oil should be 15-68 cst,and the oil should be clean and free of impurities,N46 hydraulic oil is recommended .
- 4.The pump station should be mounted horizontally.
- 5.The relief valve pressure is preset about 25% higher than the operating pressure.

Copyright: Bucher Hydraulics (Wuxi)Co.,Ltd. 编号: 苏ICP备18069474号-1