

DC 电机泵站 1

DC MOTOR PUMP GROUP 2

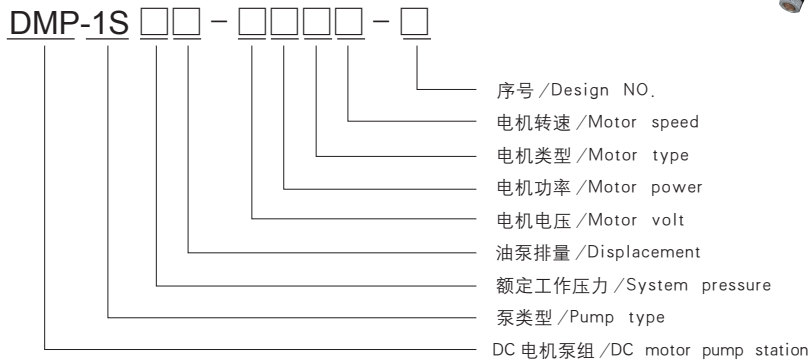
简介 General Description

此液压泵站由CB1S 高压齿轮油泵与直流电机组成，性能稳定，常用于复杂液压系统供油。

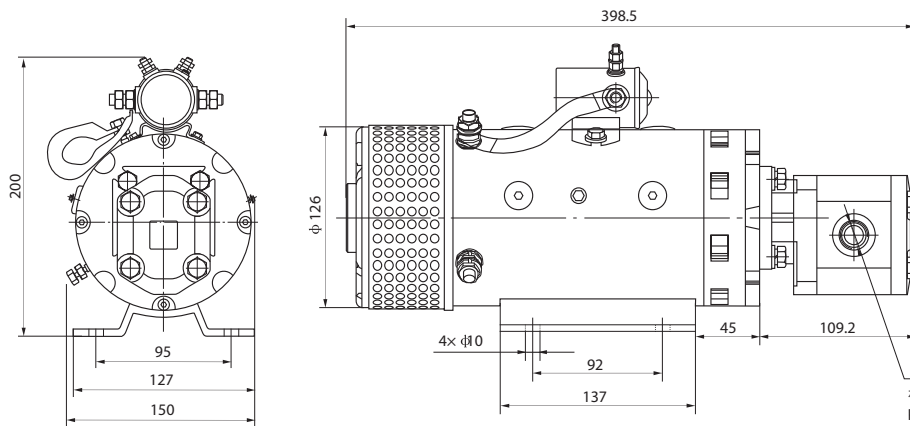
Consisting of a heavy duty DC motor and the CB1S gear pump, this pump-motor group is typically used as a power station of a complex hydraulic system.



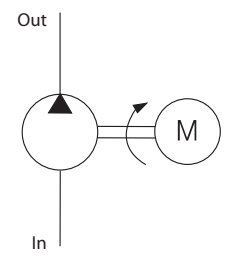
型号说明 Ordering Code



外形尺寸图 Outline Dimension



系统工作原理 Hydraulic Circuit Diagram



Inlet
根据排量不同，油口尺寸见P17
Port size see page 17 for different displacement

型号规格说明 Model Specifications

Model 型号	Motor Volt 电机电压	Motor Power 电机功率	Displacement 油泵排量	System pressure 额定工作压力	Rated Speed 名义转速
DMP-1SE2.7-2MXU-A	24VDC	2.2KW	2.7mL/r	16MPa	2500rpm
DMP-1SF3.2-2BXU-A			3.2mL/r	20MPa	
DMP-1SE4-2BXU-A		3KW	4mL/r	16MPa	
DMP-1SD6-2BXU-A			6mL/r	10MPa	
DMP-1SC9-2BXU-A			9mL/r	6.5MPa	

注意事项 Special Notes

- 此动力单元为S3工作制，不可连续运转，30秒开、270秒停。
- 安装前必须保证油缸、油管、接头等液压元件清洁无任何杂质粘附。
- 液压油粘度应为15~68CST，应清洁无杂质，推荐使用N46号液压油。
- 本电机泵站适用于卧式安装。

- The duty of this power unit is S3, i.e., 30 seconds on and 270 seconds off.
- Clean all the hydraulic parts concerned before mounting the power unit.
- Viscosity of the oil should be 15~68 cst, and the oil should be clean and free of impurities, N46 hydraulic oil is recommended.
- The pump station should be mounted horizontally.