

## 3.17 Model M-3303 (Formerly M-303)

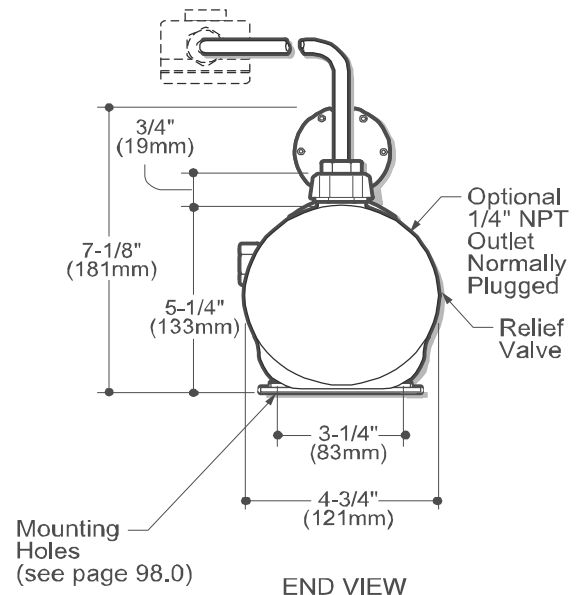
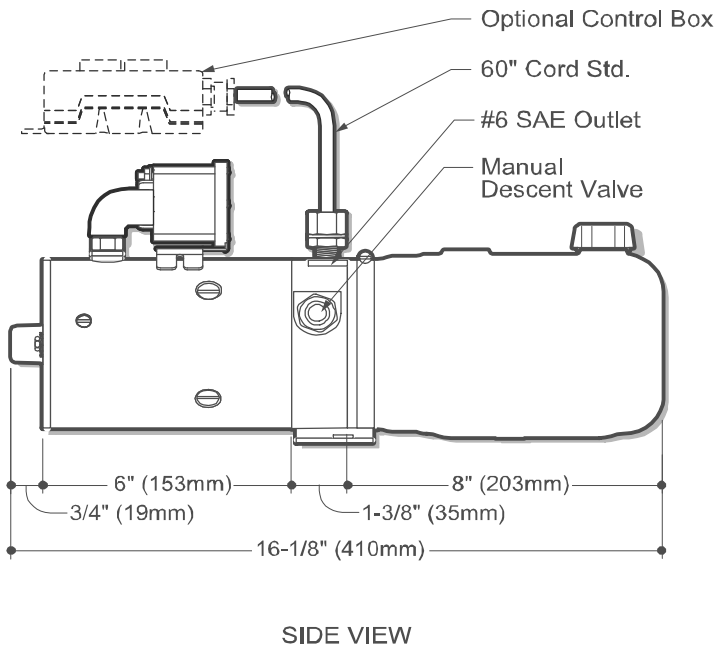
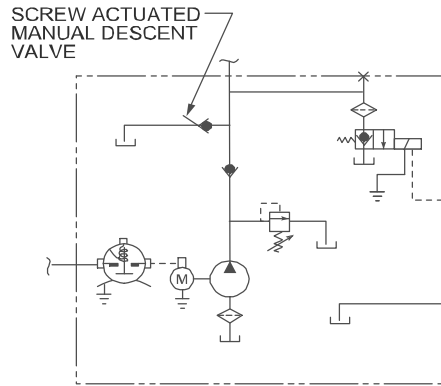
### Description

- Pump / Motor / Reservoir / Valve
- Check Valve
- 2-Way/2-Position Normally Closed Solenoid Operated Lowering Valve and Return Filter Installed in Reservoir
- Cable
- Manual Override for Emergency Lowering During Power Loss
- Externally Adjustable Relief Valve
- #6 SAE Outlet
- Horizontal Mounting Standard

### Popular Options

- Vertical Mounting / Motor Up
- Control Box

### Schematic



### How to Order Your M-3303

Comprehensive information may be found on the page referenced below each selection category.

Shown as standard with:

| Pump      | Motor        | Voltage | Reservoir (Length) | Cartridge Valve | Motor Start Switch | Mounting Bracket | Mounting Position | Accessories  | Control Boxes |
|-----------|--------------|---------|--------------------|-----------------|--------------------|------------------|-------------------|--------------|---------------|
|           | 08111        | 12      | 06102              |                 | 17757              | 04560            | Horizontal        |              | 07993         |
| Ref. Page | Ref. Page 52 |         | Ref. Page 76-86    | Ref. Page 87    | Ref. Page 89       | Ref. Page 91     |                   | Ref. Page 92 | Ref. Page 90  |



1800-OILSOL  
1800-645765

<https://oilsolutions.com.au/>

[sales@oilsolutions.com.au](mailto:sales@oilsolutions.com.au)