

## 3.2 Model M-3326 (Formerly M-326)

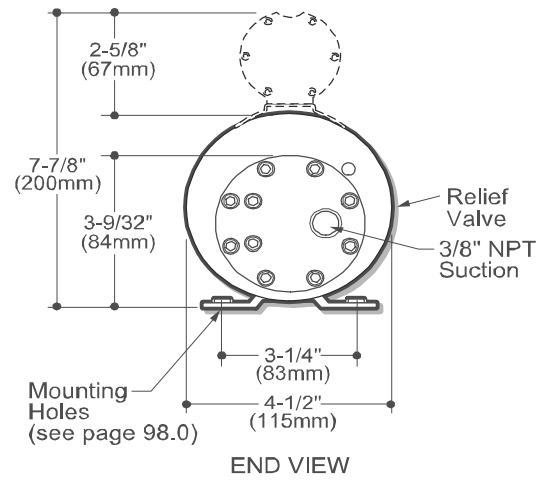
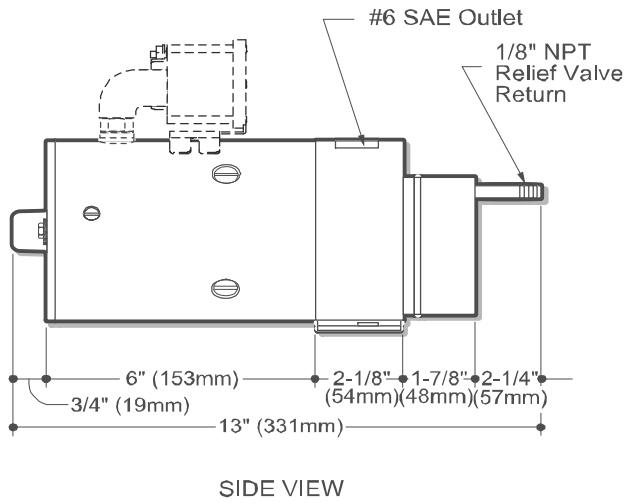
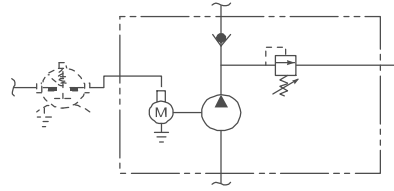
### Description

- Pump Motor Unit
- Check Valve
- Externally Adjustable Relief Valve
- .375 Inch NPT Suction
- #6 SAE Outlet
- .125 Inch NPT Relief Valve Return Port

### Popular Options

- Suction and Outlet on Pump End Plate
- Motor Start Solenoid and Bus Bar

### Schematic



### How to Order Your M-3326

Comprehensive information may be found on the page referenced below each selection category.

Shown as standard with:

Pump	Motor	Voltage	Motor Start Switch	Mounting Bracket	Accessories
	08111	12		04560	
Ref. Page	Ref. Page 52		Ref. Page 89	Ref. Page 91	Ref. Page 92



1800-OILSOL  
1800-645765

<https://oilsolutions.com.au/>

[sales@oilsolutions.com.au](mailto:sales@oilsolutions.com.au)