

## 3.22 Model M-4328-P (Formerly M-428-P)

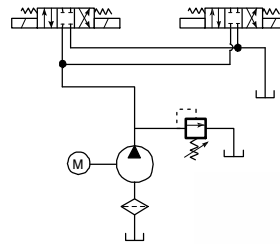
### Description

- Pump/Motor/Reservoir/Valve Unit
- Externally Adjustable Relief Valve
- Two 4-Way/3-Position Solenoid Operated Tandem Center DO3 Valves in One Two Station Manifold for Parallel Operation
- ..375 Inch NPT Outlets
- Vertical Mounting

### Popular Features

- Unit Built with unloading valve
- Unit Less D03 Valves

### Schematic



OIL SOLUTIONS

PO Box 38  
Strathfieldsaye, VIC, 3551

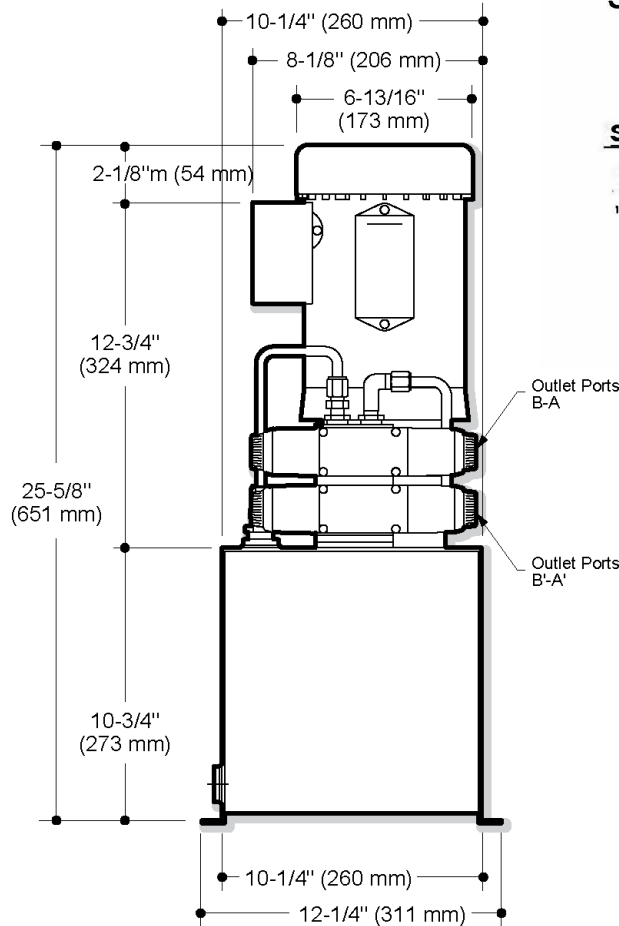
1800 OIL SOL

1800 645 765

[sales@oilsolutions.com.au](mailto:sales@oilsolutions.com.au)

[www.oilsolutions.com.au](http://www.oilsolutions.com.au)

"For All Your Hydraulic Needs"



### How to Order Your M-4328-P Power System

Comprehensive information may be found on the page referenced below each selection category.

Pump	Motor	Reservoir (Length)	Mounting Position	Valves	Accessories
Ref. Page 9	Ref. Page 10	Ref. Page 13		Ref. Page 18	Ref. Page 20