

3.7 Model M-4509-C

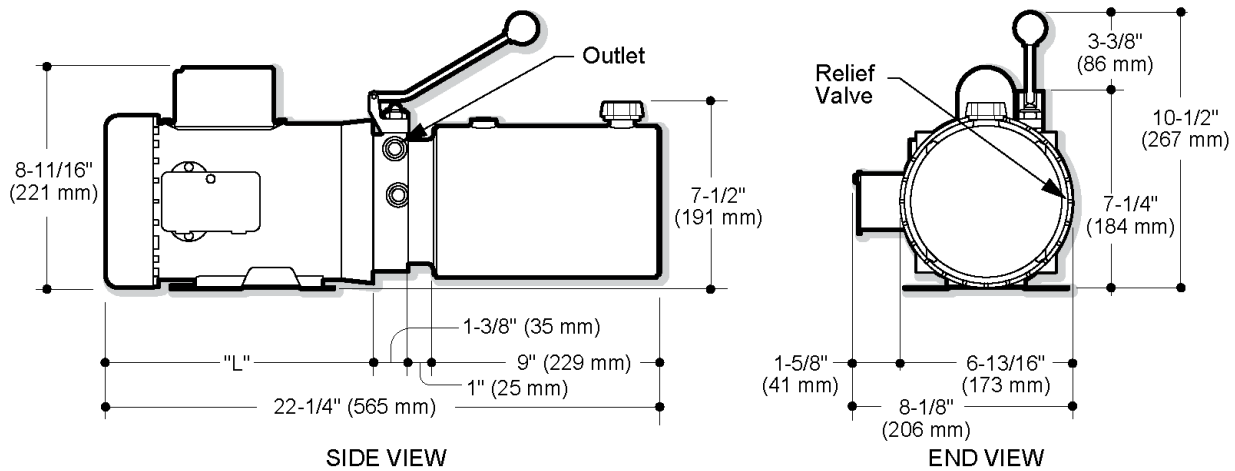
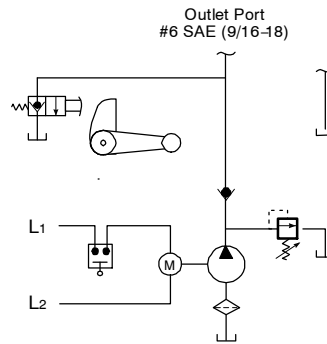
Description

- Pump / Motor / Reservoir / Valve Unit
- Check Valve
- Externally Adjustable Relief Valve
- Manually Operated Lowering Valve
- Pressure Compensated Flow Control
- #6 SAE Outlet
- Vertical Mounting Standard, Motor Up

Popular Features

- Horizontal Mounting

Schematic



"L" dimension shown for 08751 motor is 10-11/16" (271 mm)
Dimensions will vary according to motor output and manufacturer

How to Order Your M-4509-C Power System

Comprehensive information may be found on the page referenced below each selection category.

Pump	Motor	Adapter	Reservoir (Length)	Mounting Position	Accessories
Ref. Page 9	Ref. Page 10	Ref. Page 11	Ref. Page 13		Ref. Page 20



1800-OILSOL
1800-645765

<https://oilsolutions.com.au/>

sales@oilsolutions.com.au