

3.13 Model M-4519-C

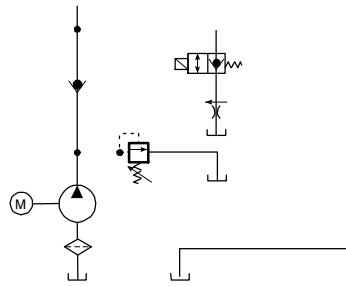
Description

- Pump/Motor/Reservoir/Valve Unit
- Check Valve
- Externally Adjustable Relief Valve
- 2 Way/2 Position Normally Closed Cartridge Valve
- #6 SAE Outlet
- Horizontal Mounting Standard

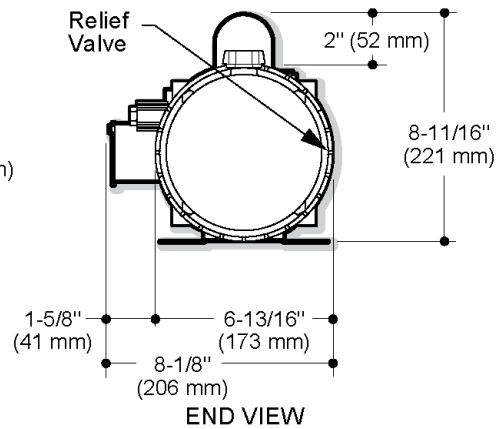
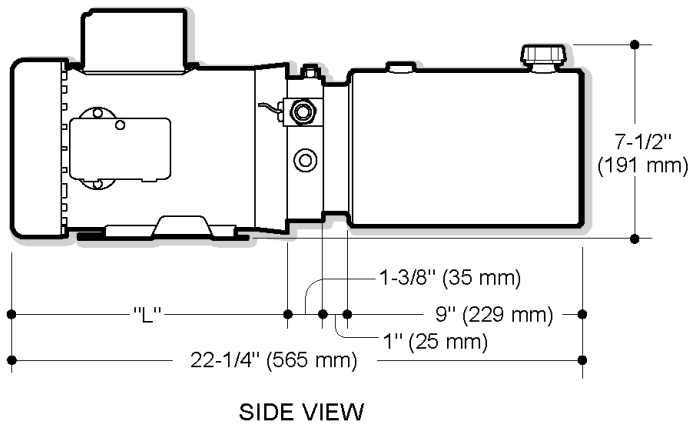
Popular Features

- Vertical Mounting / Motor Up
- Pressure Compensated Cartridge Style On Lowering Circuit
- Manual Override

Schematic



HYDRAULIC SCHEMATIC



"L" dimension shown for 08751 motor is 10-11/16" (271 mm)
Dimensions will vary according to motor output and manufacturer

How to Order Your M-4519-C Power System

Comprehensive information may be found on the page referenced below each selection category.

Pump	Adapter	Motor	Reservoir (Length)	Mounting Position	Accessories
Ref. Page 9	Ref. Page 11	Ref. Page 10	Ref. Page 13		Ref. Page 20



1800-OILSOL
1800-645765

<https://oilsolutions.com.au/>

sales@oilsolutions.com.au