

3.16 Model M-4551-C

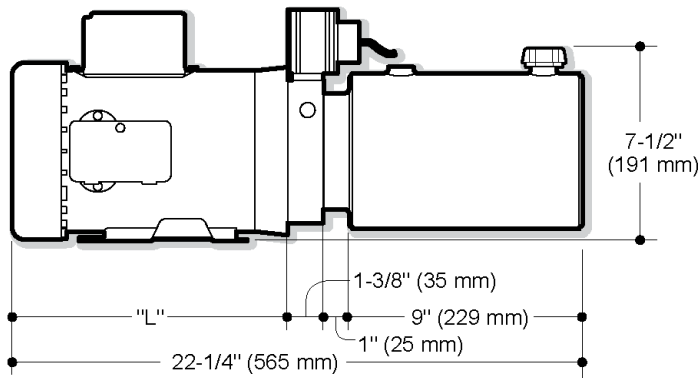
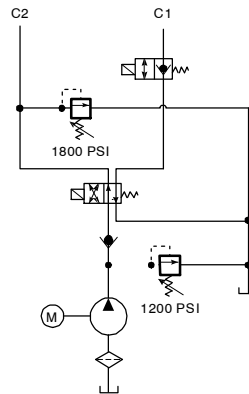
Description

- Pump/Motor/Reservoir/Valve Unit
- Check Valve
- Externally Adjustable Relief Valve
- (1) 4 Way/2 Position and (1) 2 Way/2 Position Normally Closed Solenoid Cartridge Valve Located in the Base
- C1 Port Positively Checked
- Externally Adjustable Relief Valve in C2 Port
- #6 SAE Outlets
- Horizontal Mounting Standard

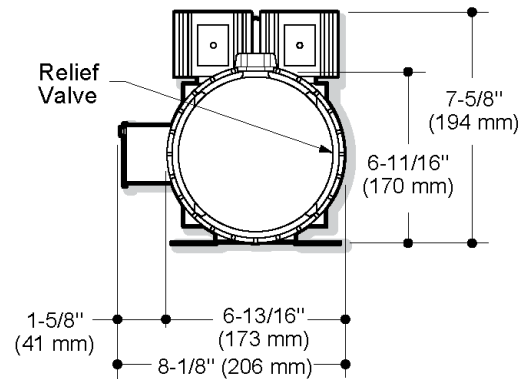
Popular Features

- Pressure Compensated Cartridge Style Flow Control
- Vertical Mounting, Motor Up

Schematic



SIDE VIEW



END VIEW

"L" dimension shown for 08751 motor is 10-11/16" (271 mm)
Dimensions will vary according to motor output and manufacturer

How to Order Your M-4551-C Power System

Comprehensive information may be found on the page referenced below each selection category.

Pump	Motor	Adapter	Reservoir (Length)	Mounting Position	Accessories
Ref. Page 9	Ref. Page 10	Ref. Page 11	Ref. Page 13		Ref. Page 20



1800-OILSOL
1800-645765

<https://oilsolutions.com.au/>

sales@oilsolutions.com.au