

# Genuine Metaris MH Series Dump Pumps

Rugged, Reliable and Totally Interchangeable

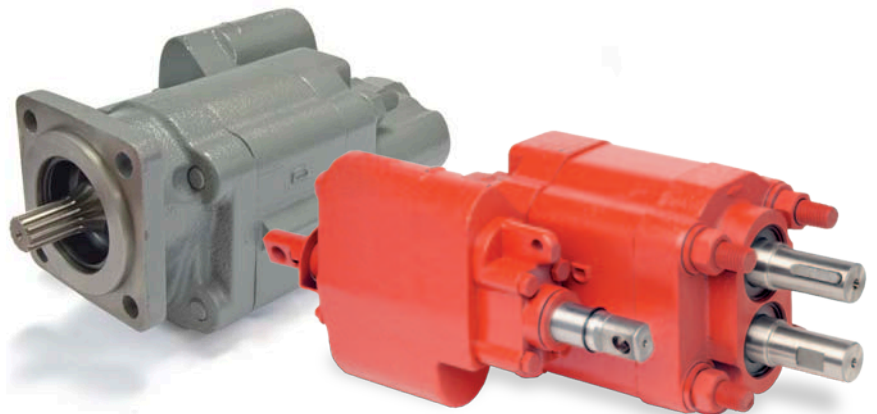


## Offering Remote Mount, Direct Mount and Dual Pressure Options

Genuine Metaris Dump Pumps are known for their ruggedness, reliability and interchangeability. Available in both the 101 Remote Mount and the 102 Direct Mount configurations and C or G frames, these pumps offer cast iron construction, a variety of displacements and “Air Shift” capabilities.

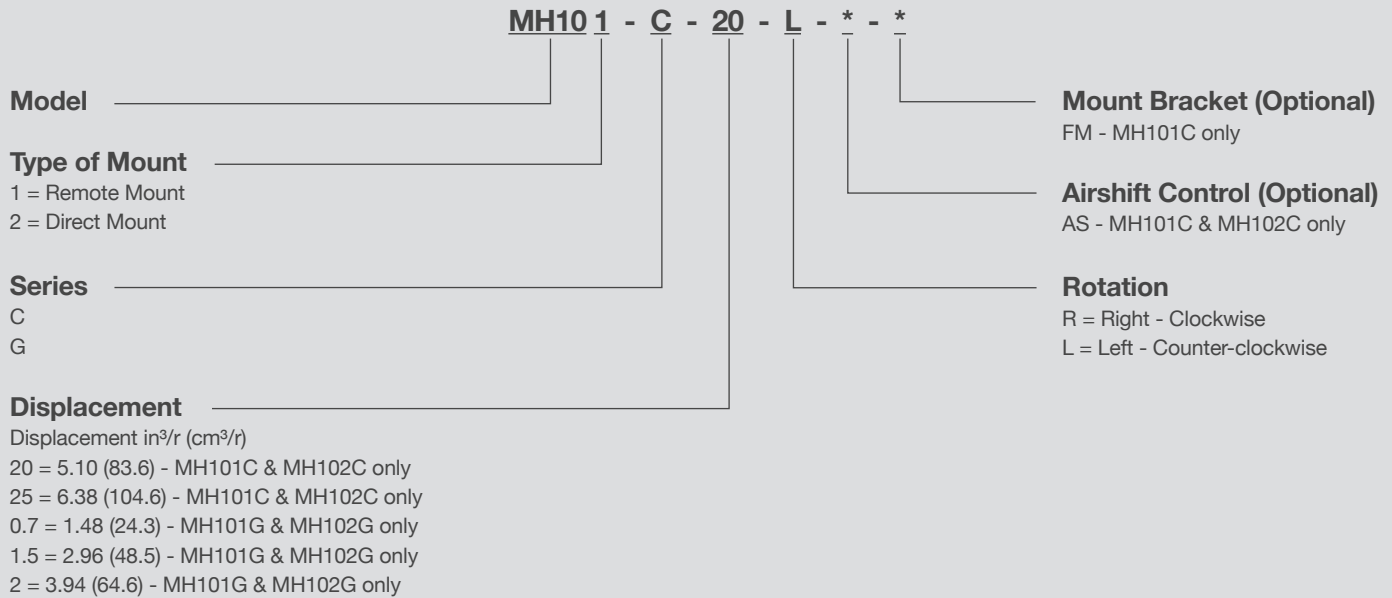
Our Dual Pressure Dump Pumps come equipped with two relief pressures on them: high pressure (3000 psi) for Walking Floor® applications and low pressure (2000 psi) for dump applications, each is selectable by a supplied air switch.

- Remote Mount, Direct Mount and Dual Pressure Options
- 3 Piece Cast Iron Construction
- High Pressure Shaft Seals
- Direct Acting Relief C/W Load Check
- Pressure Balance Thrust Plates
- Heavy Duty Roller Bearing
- Two or Three Line Hook-up
- Optional Airshift Control
- Factory set Relief Pressure at 2000 psi
- Optional Mounting Bracket
- Dowelled for Higher Pressure



# Options and Flexibility

## Model Code Breakdown



| Pump Series | Remote Mount | Direct Mount | Flow at 1200 RPM (gpm / lpm) |           |            |            | Max RPM | Max Pressure (psi / BAR) |
|-------------|--------------|--------------|------------------------------|-----------|------------|------------|---------|--------------------------|
|             |              |              | 3/4"                         | 1-1/2"    | 2"         | 2-1/2"     |         |                          |
| MH101G      | X            |              | 9.5 / 36                     | 21 / 79.5 | 29 / 109.3 | -          | 1800    | 2500 / 173               |
| MH101C      | X            |              | -                            | -         | 39 / 147   | 48 / 180.5 | 1800    | 2500 / 173               |
| MH102G      |              | X            | 9.5 / 36                     | 21 / 79.5 | 29 / 109.3 | -          | 1800    | 2500 / 173               |
| MH102C      |              | X            | -                            | -         | 39 / 147   | 48 / 180.5 | 1800    | 2500 / 173               |



### Air Shift Kits

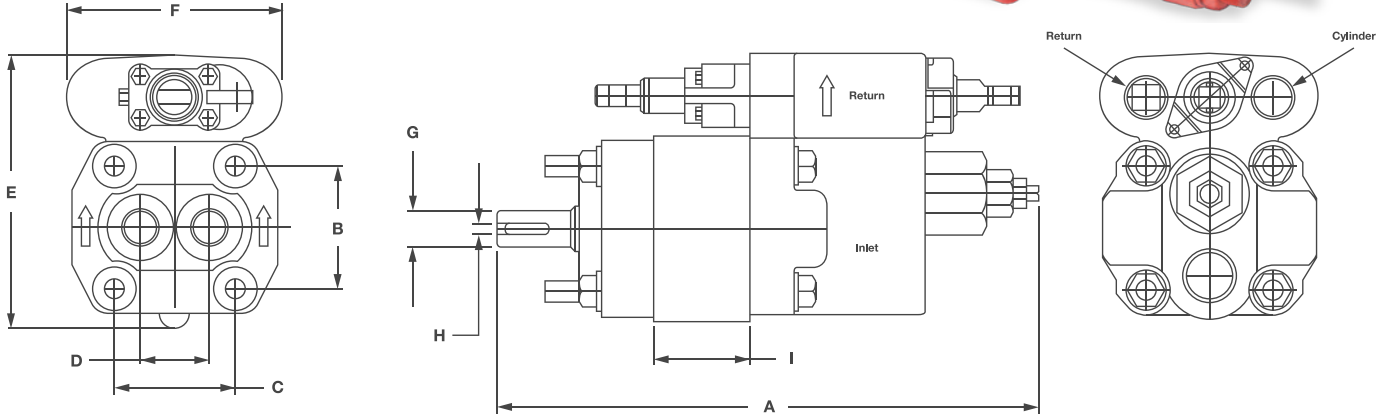
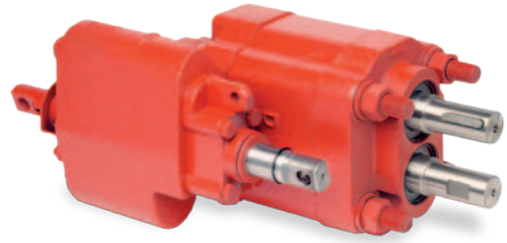
The Genuine Metaris airshift cylinder converts a manual pump into an airshift dump pump. This unit can be factory installed or sold separately.



### L Mounting Bracket

Our optional Genuine Metaris mounting bracket for the MH101C model dump pump.

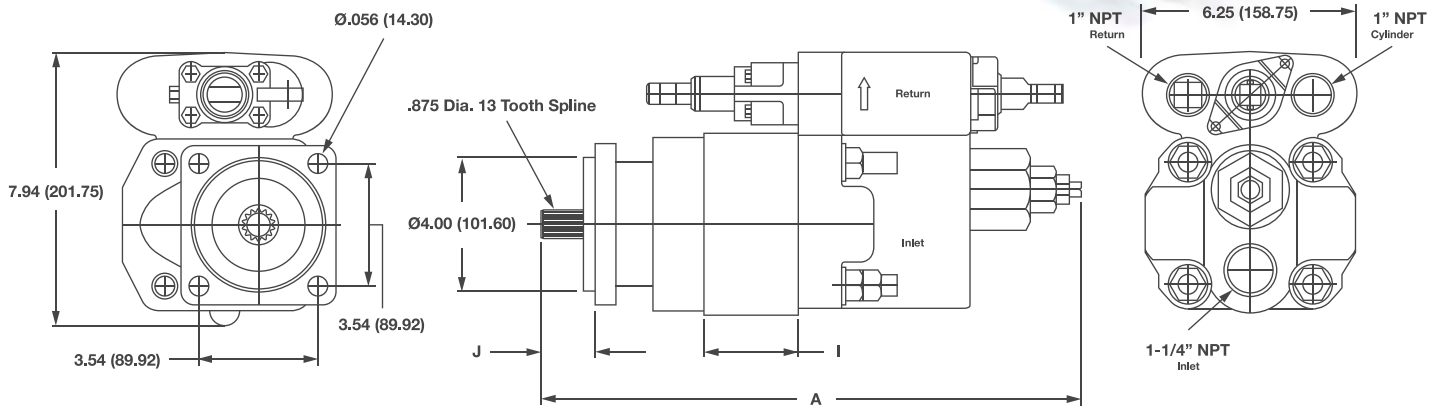
## MH101 Series Dump Pumps



| Pump Series | A        | B    | C    | D    | E    | F    | G    | H   | I (25) | I (20) | I (1.5) | I (.75) | J |
|-------------|----------|------|------|------|------|------|------|-----|--------|--------|---------|---------|---|
| MH101C      | 13.12+GW | 3.56 | 3.56 | 2    | 7.94 | 6.25 | .998 | .25 | 3.25   | 2.75   | -       | -       | - |
| MH101G      | 10.56    | -    | -    | 1.75 | 6.12 | 5.25 | .998 | .25 | -      | 2      | .75     | 1       | - |

\* Measurements are in inches.

## MH102 Series Dump Pumps

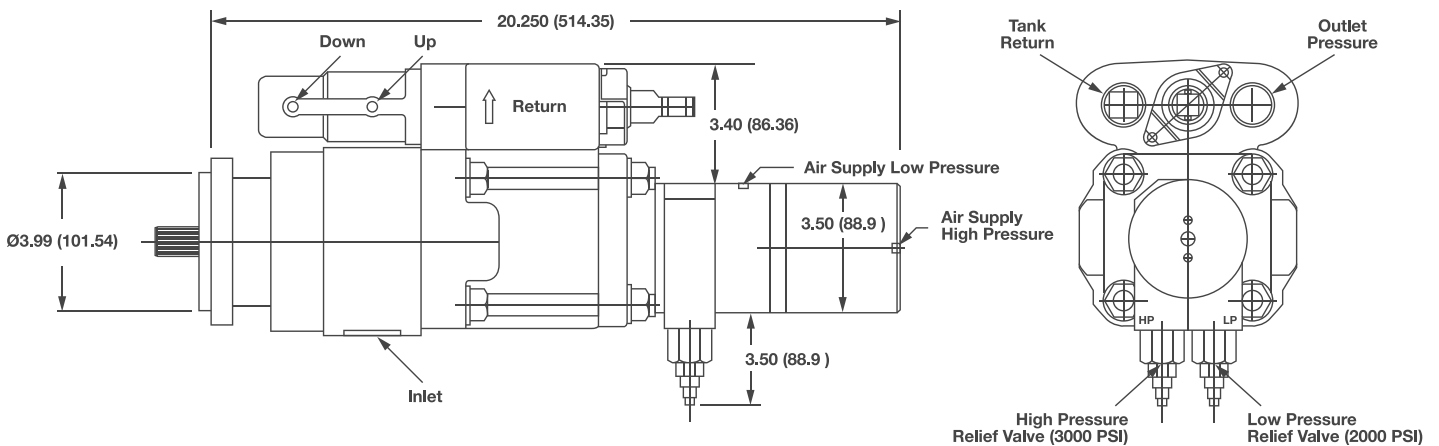


| Pump Series | A        | B | C | D | E    | F    | G    | H | I (25) | I (20) | I (1.5) | I (.75) | J    |
|-------------|----------|---|---|---|------|------|------|---|--------|--------|---------|---------|------|
| MH102C      | 13.62+GW | - | - | - | 7.94 | 6.25 | .875 | - | 3.25   | 2.75   | -       | -       | 1.62 |
| MH102G      | 11.38+GW | - | - | - | 7.94 | 6.25 | .875 | - | -      | 2      | .75     | 1       | 1.31 |

\* Measurements are in inches.

# MHWFD Series Dump Pumps

- Dual Pressure Pump with Direction Control Valve
- Pump Utilizes Two Relief Pressure:
  - High Pressure (3000 psi) for Walking Floor® Applications
  - Low Pressure (2000 psi) for Dump Applications
- Factory Set Relief Pressures - these should not be adjusted
- Includes Air Switch - used to switch between high and low pressure
- Pump Mounting Bracket Included
- Set up as a 3-Line System only



Counter Clock-wise Rotation View

| Pump Series | Displacement (in <sup>3</sup> /r) | Displacement (cm <sup>3</sup> /r) | Flow at 1200 RPM (gpm / lpm) | Max RPM | Pressure (psi) |
|-------------|-----------------------------------|-----------------------------------|------------------------------|---------|----------------|
| MHWFD2.0    | 5.1                               | 83.6                              | 26.5 / 100.3                 | 1800    | 2000-3000      |

\* Air pressure must be 80 psi minimum to operate the high/low pressure relief air cylinder.  
 \*\* PTO is required to operate at 130% of the engine speed. In most applications, the engine RPM is 1000-1200rpm when equipped with a Genuine Metaris PTO - this will be a 'C' or 'E' ratio.

Walking Floor® is a registered trademark not owned by or affiliated with Metaris or Hydraulex Global.



Hydraulex Global Corporate  
 48175 Gratiot Ave  
 Chesterfield, MI 48051  
 Toll Free: 800.422.4279  
 Tel: 586.949.4240  
**www.hydraulex.com**

Hydraulex Global - Michigan Tel: 586.949.4240  
 Hydraulex Global - Mississippi Tel: 601.469.1987  
 Hydraulex Global - ON, Canada Tel: 416.638.6000  
 Hydraulex Global - Washington Tel: 253.604.0400  
 Hydraulex Global - Tennessee Tel: 901.794.2462

sales@ahx1.com  
 sales@metarisusa.com  
 sales@metaris.com  
 sales@h-r-d.com  
 sales@flinhydrostatics.com



Connect with us:    

All manufacturers names, symbols and descriptions in this document are used for reference purposes only, and it is not implied that any parts listed is the product of these manufacturers.