



MTE Hydraulics, Inc.
Rockford, IL 61109
Tel: 815-397-4701

Website www.mtehydraulics.com

[Main Menu](#)

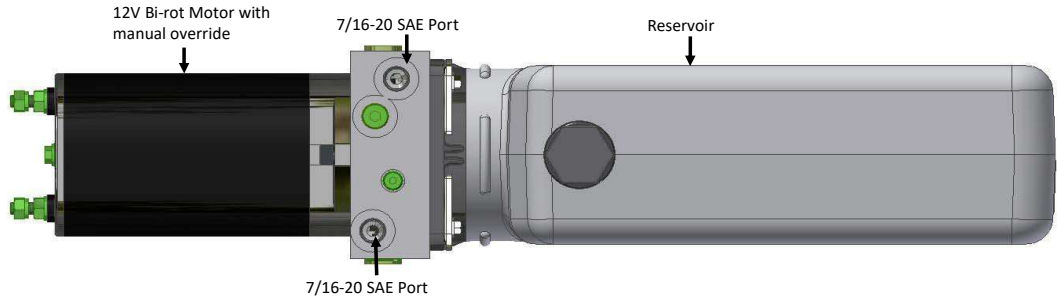
100 Series DC Bi-Rotational Unit

Description

Bi-Rotational Unit
Internal Check Valves
(2) Relief Valves
7/16-20 SAE Ports.
Horizontal or Vertical Mounting
PO Check Valves

Available Options

Back Pressure Circuit



Ordering Information

Fixed Displ Pump Size

101- (.019 in ³ /rev)
101- (.018 in ³ rev)
102- (.025 in ³ rev)
103- (.042 in ³ rev)

(Mark Pump Size with X)

Consult factory for additional

Tank Sizes

.42 Quart
.79 Quart
1.2 Quart
1.6 Quart
2 Quart

(Mark Tank Size with X)

Contact factory for other tank sizes available

Tank Orientation

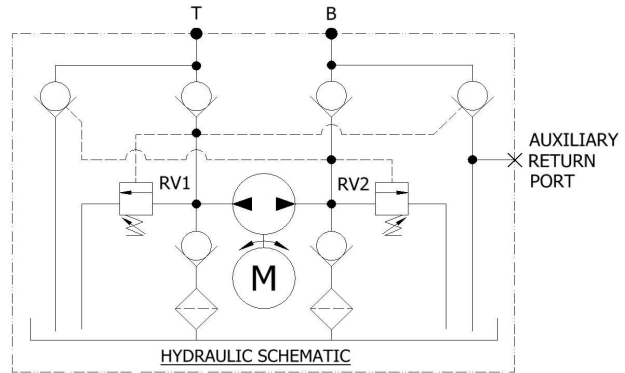
Horizontal
Vertical

(Mark orientation with X)

Tank Style

Plastic
Steel

(Mark Tank Option with X)



Application Information

Are there Drawings/Schematics available _____

Operating Pressure: _____ time on _____ time off _____

RV1 Pressure: _____ time on _____ time off _____ RV2 setting _____

Type of hydraulic fluid: _____ Fluid conditions: _____

Envelope restrictions: _____

Mounting requirements _____

Cylinder information: Stroke _____ Rod _____ Bore _____

No. of units required: _____ Mo. Yr Prototype required

Target Price: _____ Target Customer _____

Additional Information _____

(Coil Type, Fittings, PCFC, Etc.)



1800-OILSOL
1800-645765

<https://oilsolutions.com.au/>

sales@oilsolutions.com.au