



MTE Hydraulics, Inc.
Rockford, IL 61109
Tel: 815-397-4701

Website www.mtehydraulics.com

[Main Menu](#)

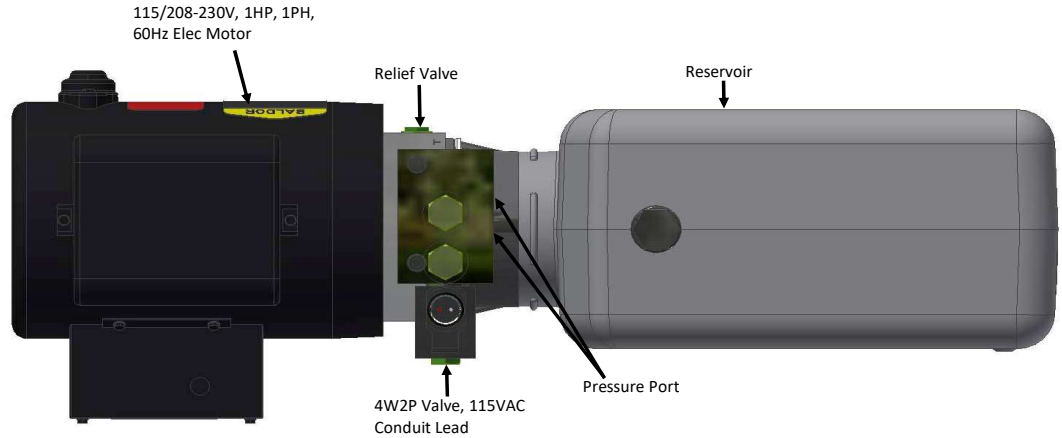
Compactor AC Unit

Description

Double Pump
Internal Check Valve
Relief Valve
(2) 9/16-18 SAE Ports.
Horizontal or Vertical Mounting
1HP AC Elec Motor
4W2P Valve

Options

2W2P Valves for additional holding



Ordering Information

Fixed Displ Pump Size

201-(.067 in ³ /rev)
202-(.110 in ³ rev)
203-(.150 in ³ rev)
204-(.191 in ³ rev)

(Mark Pump Size with X)

Consult factory for additional pumps sizes not shown.

Tank Orientation

Horizontal
Vertical

(Mark orientation with X)

Motor Options

1HP,1PH,115/208-230V
2HP,1PH,208-230V
2HP,3PH, 208-230V

(Mark Motor Option)

Tank Style

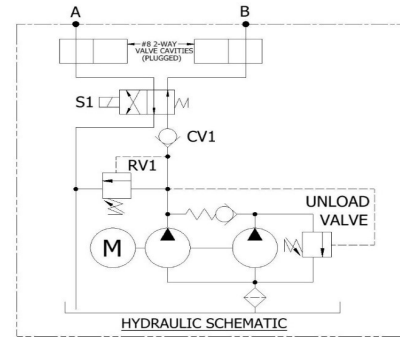
Plastic
Steel

(Mark Tank Option with X)

Tank Sizes

1 Gallon
1.25 Gallon
1.5 gallon
2 gallon
3.5 gallon

Contact factory for other tank sizes available



Application Information

Are there Drawings/Schematics available _____

Operating Pressure: _____ time on _____ time off _____

RV Pressure: _____ time on _____ time off _____

Type of hydraulic fluid: _____ Fluid conditions: _____

Envelope restrictions: _____

Mounting requirements _____

Cylinder information: Stroke _____ Rod _____ Bore _____

No. of units required: _____ Mo. Yr Prototype required

Target Price: _____ Target Customer _____

Additional Information _____

(Coil Type, Fittings, PCFC, Etc.) _____



1800-OILSOL
1800-645765

<https://oilsolutions.com.au/>

sales@oilsolutions.com.au