

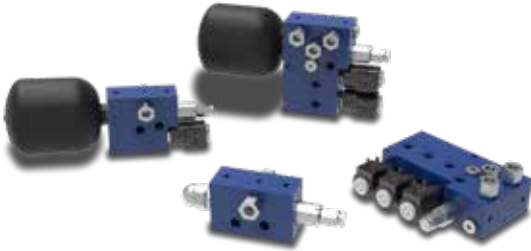


SU-SE HYDRAULIC REMOTE CONTROL ONE SERVICE PORT

The purpose of feed unit SU and SE is to fit hydraulic remote controls in an hydraulic system working at high pressure with reduced flow at low pressure.

The feed unit range is thus divided: **SU2, SU3, SE2, SE3**

SE3 can fit up to 3 dump valves (12 - 24 Vdc)

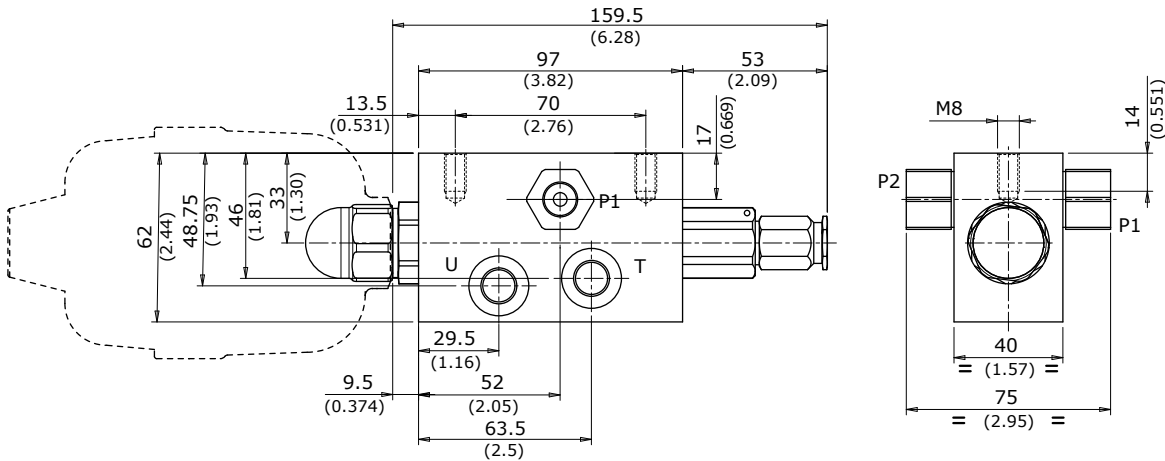


TECHNICAL SPECIFICATIONS

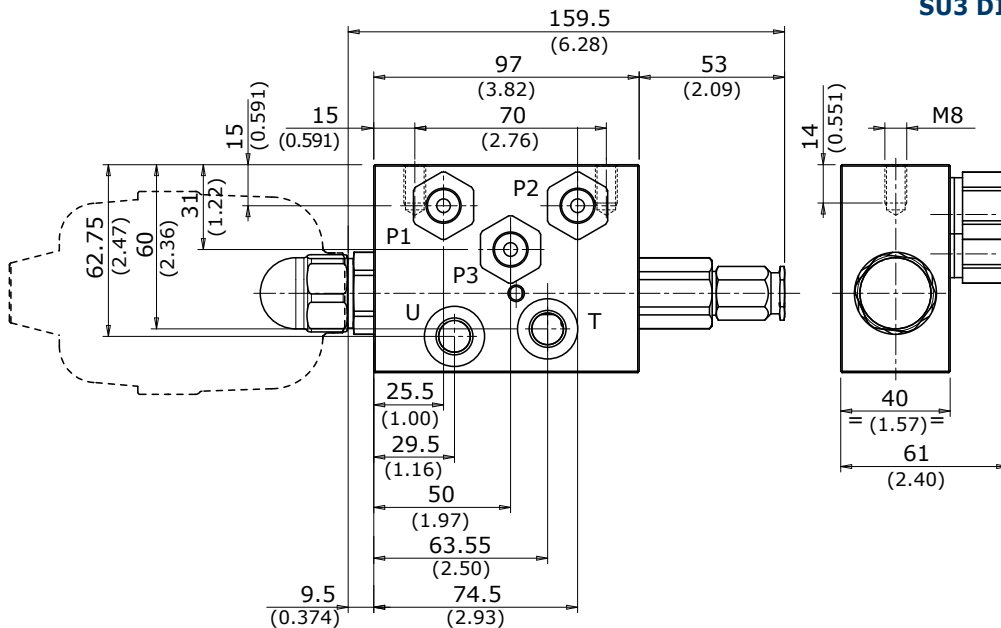
| | |
|--------------------------------------|--|
| Max pressure: | 350 bar (5100 psi) |
| Pressure on port line (U): | from 10 to 70 bar (from 145 to 1015 psi) |
| Max. back pressure on tank line (T): | 3 bar (43.5 psi) |
| Minimum pressure (P1): | 10 bar (145 psi) |
| Max pressure: | 100 bar (1450 psi) |
| Nominal flow rating: | from 5 to 20 l/min (from 1.32 to 5.28 US gpm) |

Remote pilot of: directional control valves, variable displacement pumps and motors, auxiliary valves, frictions and hydraulic brakes

SU2 DIMENSIONS



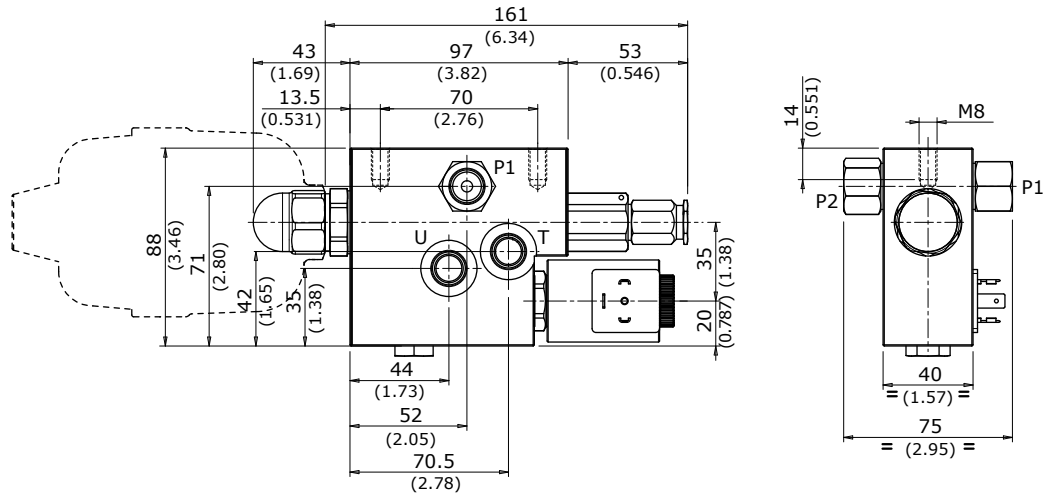
SU3 DIMENSIONS



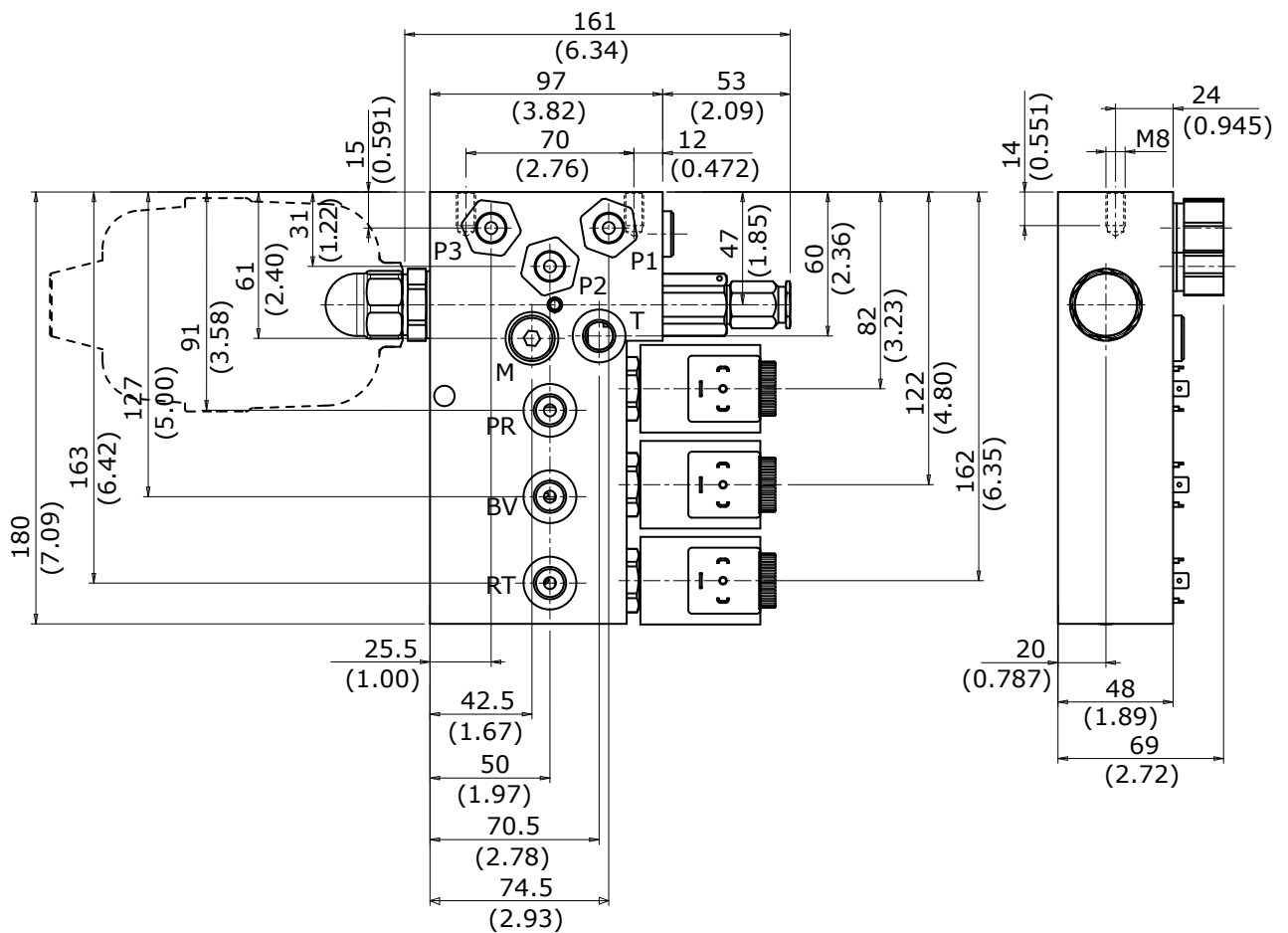


HYDRAULIC REMOTE CONTROL ONE SERVICE PORT **SU-SE**

SE2 DIMENSIONS



SE3 DIMENSIONS

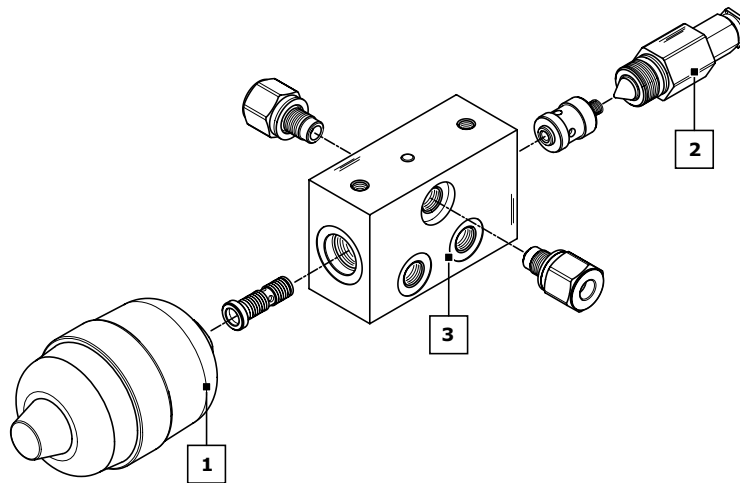




SU-SE HYDRAULIC REMOTE CONTROL ONE SERVICE PORT

ORDER EXAMPLE = SU2: V04 - 30 - RA G02

- SU product type
- 2 number of lines
- 1 ACCUMULATOR CLASSIFICATION:**
 - V04** accumulator model
- 2 REDUCING VALVE:**
 - 30** pressure setting (0-70 bar on working port U)
- 3 BODY ARRANGEMENT:**
 - RA** body specification
 - G02** body thread



| | |
|--------------------------------|--|
| PRODUCT TYPE: (page 65) | |
| SU2 | Two (P) lines feed unit at high pressure |
| SU3 | Three (P) lines feed unit at high pressure |
| SE2 | Feed unit with 2 inlets at high pressure and 1 outlet with reduced pressure (port U) with dump valve |
| SE3/1 | Feed unit with 3 inlets at high pressure and 1 outlet with reduced pressure (port U) with dump valve |
| SE3/2 | Feed unit with 3 inlets at high pressure and 2 outlets with reduced pressure (port BV-PR) with dump valve on each outlet |
| SE3/3 | Feed unit with 3 inlets at high pressure and 3 outlets with reduced pressure (port BV-PR-RT) with dump valve on each outlet |
| 1 | ACCUMULATOR CLASSIFICATION CURVE: (page 66) |
| V01 | Without accumulator |
| V03 | Prearranged for accumulator (1/2" BSP) |
| V04 | Hydropneumatic accumulator with rubber membrane (Volume of nitrogen: lt. 0.35 - 21 in ³ / Precharge: 10 bar - 145 psi) |
| 2 | REDUCING VALVE: |
| 30 | In the ordering code is necessary to indicate the pressure setting of reducing valve. setting range pressure: from 0 to 70 bar (from 0 to 1015 psi) |
| 3 | BODY ARRANGEMENT: (page 69) |
| RA G02 | Standard body (only for SU2) (G 1/4 ports) |
| RB G02 | Standard body (only for SU3) (G 1/4 ports) |
| RV G02 | Body with dump valve 12 VDC (only for SE2 - SE3) (G 1/4 ports) |
| RW G02 | Body with dump valve 24 VDC (only for SE2 - SE3) (G 1/4 ports) |
| RA U02 | Standard body (only for SU2) (9/16"-18 UNF ports) |
| RB U02 | Standard body (only for SU3) (9/16"-18 UNF ports) |
| RV U02 | Body with dump valve 12 VDC (only for SE2 - SE3) (9/16"-18 UNF ports) |
| RW U02 | Body with dump valve 24 VDC (only for SE2 - SE3) (9/16"-18 UNF ports) |



HYDRAULIC REMOTE CONTROL ONE SERVICE PORT **SU-SE**

FEED UNIT CLASSIFICATION

| Code | Scheme | Configuration | Description |
|-------|--------|---------------|---|
| SU2 | | | Two (P) lines feed unit at high pressure |
| SU3 | | | Three (P) lines feed unit at high pressure |
| SE2 | | | Feed unit with 2 inlets at high pressure and 1 outlet with reduced pressure (port U) with dump valve |
| SE3/1 | | | Feed unit with 3 inlets at high pressure and 1 outlet with reduced pressure (port U) with dump valve |
| SE3/2 | | | Feed unit with 3 inlets at high pressure and 2 outlets with reduced pressure (port BV-PR) with dump valve on each outlet |
| SE3/3 | | | Feed unit with 3 inlets at high pressure and 3 outlets with reduced pressure (port BV-PR-RT) with dump valve on each outlet |



SU-SE HYDRAULIC REMOTE CONTROL ONE SERVICE PORT

ACCUMULATOR CLASSIFICATION

| Code | Scheme | Dimensions | Description |
|------|--------|------------|--|
| V01 | | | Without accumulator |
| V02 | | | With accumulator arrangement (M18x1,5) |
| V03 | | | With accumulator arrangement (1/2" BSP) |
| V04 | | | Hydropneumatic accumulator with rubber membrane Volume of nitrogen: lt. 0.35 Precharge: 10 bar |
| V05 | | | Hydropneumatic accumulator with rubber membrane Volume of nitrogen: lt. 0.75 Precharge: 10 bar |
| V06 | | | Hydropneumatic accumulator with rubber membrane Volume of nitrogen: lt. 1.50 Precharge: 10 bar |

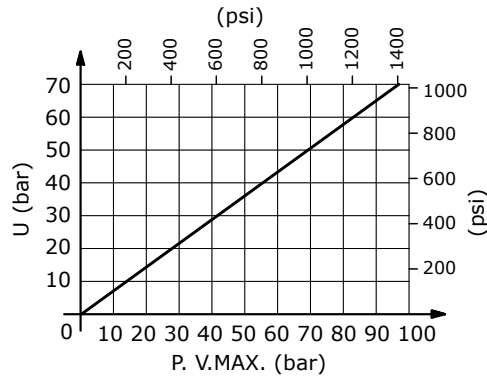


HYDRAULIC REMOTE CONTROL ONE SERVICE PORT **SU-SE**

| ACCUMULATORS TECHNICAL SPECIFICATIONS | | | |
|---------------------------------------|--|-----------------------------|--------------------------------|
| Max. working pressure | Working temperature | Max. allowed pressure ratio | Accumulator precharge pressure |
| 210 bar (3050 psi) | from -20°C to 80°C (from -4°F to 176°F) | < 6/1 | 10 bar (145 psi) |

SETTING DIAGRAM, REDUCING VALVE, RELIEF VALVE

Because of the small dimensions and working on the same adjusting screw, this valve has the possibility of setting both the pressure reducing valve and the main relief valve. Main relief valve pressure setting is higher than about 10 bar if compared to the pressure reducing valve - see the pressure setting diagram. Feed unit may be installed in any mounting position but the accumulator should be as far as possible from heat sources..



**SU-SE** HYDRAULIC REMOTE CONTROL ONE SERVICE PORT**DUMP VALVE TECHNICAL SPECIFICATIONS**

| Description | Value |
|---|--------------------------------|
| Operating voltage | 12 - 24 VDC +/- 10% |
| Resistance at 20°C | 6.8 Ω (12 VDC) - 27 Ω (24 VDC) |
| Power at 20°C | 21 W |
| Utilization factor | ED100% |
| Copper wire thermal class according to CEI EN 60172 | H |
| Coil thermal class according to CEI EN 60085 | F |
| Connector | DIN 43650/ISO4400 |
| Connector protection (EN 60529) | IP65 |

On request equipped counterpart connector DIN 43650/ISO4400. Ordering code: 413000313.



HYDRAULIC REMOTE CONTROL ONE SERVICE PORT **SU-SE**

BODY ARRANGEMENT

The body configuration of a feed unit changes according to the product used; BSP and UNF service ports are featured in every set-up. For different applications contact our Sales Dept.

| Code | Configuration | Description | SU2 | SU3 | SE2 | SE3/1 | SE3/2 | SE3/3 |
|---------------|---------------|--|-----|-----|-----|-------|-------|-------|
| RA G02 | | Standard body G 1/4 ports | • | | | | | |
| RA U02 | | Standard body 9/16"-18 UNF ports | • | | | | | |
| RB G02 | | Standard body G 1/4 ports | | • | | | | |
| RB U02 | | Standard body 9/16"-18 UNF ports | | • | | | | |
| RV G02 | | Body with dump valve (12 Vdc) G 1/4 ports | | | • | • | • | • |
| RV U02 | | Body with dump valve (12 Vdc) 9/16"-18 UNF ports | | | | • | • | • |
| RW G02 | | Body with dump valve (24 Vdc) G 1/4 ports | | | • | • | • | • |
| RW U02 | | Body with dump valve (24 Vdc) 9/16"-18 UNF ports | | | | • | • | • |