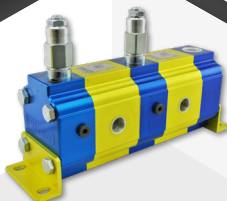
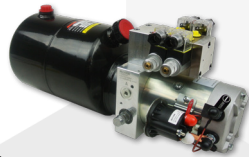
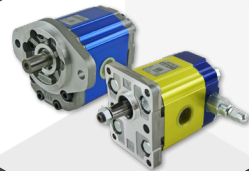


Hydraulics Network

CATALOGUE **2026**

HAND PUMPS, DIVERTER &
BALL VALVES

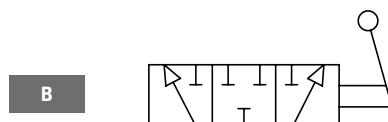
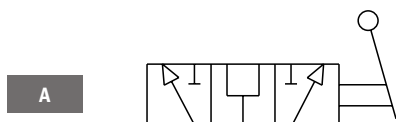


MiMOTION

**TECH
DATA**

Manual Diverter Valve - 3 Port

Part #	Ports	Max Pressure	Max Flow	Spool Crossover	Tech Data Ref.
DDF3380A	3/8" BSPP	350 bar	60 L/min	Open centre	7000.0100
DDF3120A	1/2" BSPP	350 bar	90 L/min	Open centre	7000.0101
DDF3340A	3/4" BSPP	350 bar	120 L/min	Open centre	7000.0102
DDF3100A	1" BSPP	300 bar	200 L/min	Open centre	7000.0103
DDF3380B	3/8" BSPP	350 bar	60 L/min	Closed centre	7000.0107
DDF3120B	1/2" BSPP	350 bar	90 L/min	Closed centre	7000.0108
DDF3340B	3/4" BSPP	350 bar	120 L/min	Closed centre	7000.0109
DDF3100B	1" BSPP	300 bar	200 L/min	Closed centre	7000.0110

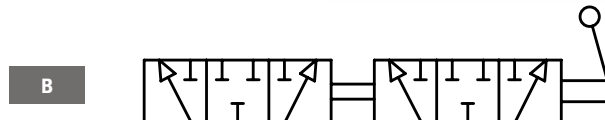
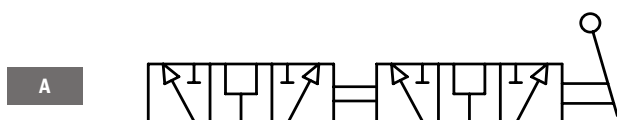


HV hydraulic
MADE IN EUROPE

**TECH
DATA**

Manual Diverter Valve - 6 Port

Part #	Ports	Max Pressure	Max Flow	Spool Crossover	Tech Data Ref.
DDF6380A	3/8" BSPP	350 bar	60+60 L/min	Open centre	7003.0100
DDF6120A	1/2" BSPP	350 bar	60+90 L/min	Open centre	7003.0101
DDF6340A	3/4" BSPP	350 bar	120+120 L/min	Open centre	7003.0102
DDF6100A	1" BSPP	300 bar	200+200 L/min	Open centre	7003.0103
DDF6380B	3/8" BSPP	350 bar	60+60 L/min	Closed centre	7003.0107
DDF6120B	1/2" BSPP	350 bar	60+90 L/min	Closed centre	7003.0108
DDF6340B	3/4" BSPP	350 bar	120+120 L/min	Closed centre	7003.0109
DDF6100B	1" BSPP	300 bar	200+200 L/min	Closed centre	7003.0110

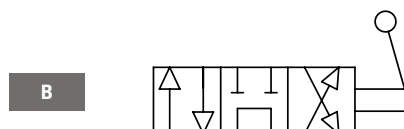
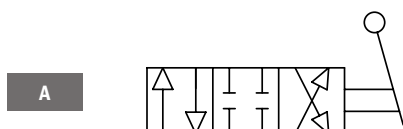


HV hydraulic
MADE IN EUROPE

**TECH
DATA**

Manual Diverter Valve - 4 Port

Part #	Ports	Max Pressure	Max Flow	Spool Crossover	Tech Data Ref.
IDF4380A	3/8" BSPP	350 bar	60 L/min	Closed centre	7001.0107
IDF4120A	1/2" BSPP	350 bar	90 L/min	Closed centre	7001.0108
IDF4340A	3/4" BSPP	350 bar	120 L/min	Closed centre	7001.0109
IDF4100A	1" BSPP	300 bar	200 L/min	Closed centre	7001.0110
IDF4380B	3/8" BSPP	350 bar	60 L/min	Open centre	7001.0100
IDF4120B	1/2" BSPP	350 bar	90 L/min	Open centre	7001.0101
IDF4340B	3/4" BSPP	350 bar	120 L/min	Open centre	7001.0102
IDF4100B	1" BSPP	300 bar	200 L/min	Open centre	7001.0103

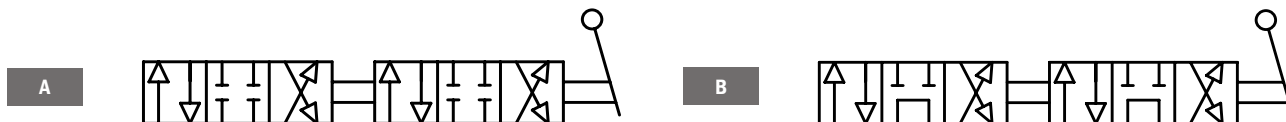


HV hydraulic
MADE IN EUROPE

TECH DATA

Manual Diverter Valve - 8 Port

Part #	Ports	Max Pressure	Max Flow	Spool Crossover	Tech Data Ref.
IDF8380A	3/8" BSPP	350 bar	60+60 L/min	Closed centre	7005.0107
IDF8120A	1/2" BSPP	350 bar	60+90 L/min	Closed centre	7005.0108
IDF8340A	3/4" BSPP	350 bar	120+120 L/min	Closed centre	7005.0109
IDF8100A	1" BSPP	300 bar	200+200 L/min	Closed centre	7005.0110
IDF8380B	3/8" BSPP	350 bar	60+60 L/min	Open centre	7005.0100
IDF8120B	1/2" BSPP	350 bar	60+90 L/min	Open centre	7005.0101
IDF8340B	3/4" BSPP	350 bar	120+120 L/min	Open centre	7005.0102
IDF8100B	1" BSPP	300 bar	200+200 L/min	Open centre	7005.0103



TECH DATA

Manual Diverter Valve - Replacement Handles

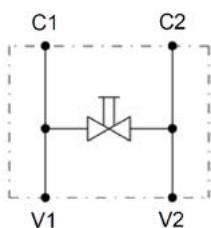
Part #	To Fit	Port Size
12000030	DDF/IDF	3/4", 1"



TECH DATA

Manual Diverter Float Valve

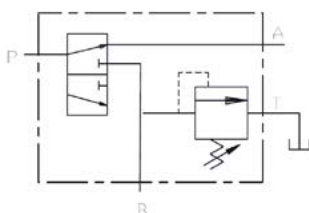
Part #	Ports	Max Pressure	Max Flow
VDF 03	1/2" BSPP	210 bar	35 L/min



TECH DATA

Manual Diverter Valve 2 Position with Relief

Part #	Ports	Max Pressure	Max Flow	Relief Range
VI4WAM0480-20-A	3/4" BSPP	350 bar	120 L/min	30-260 bar



HAND PUMPS, DIVERTERS & BALL VALVES

PUSH/PULL DIVERTER VALVE & SOLENOID DIVERTER VALVES

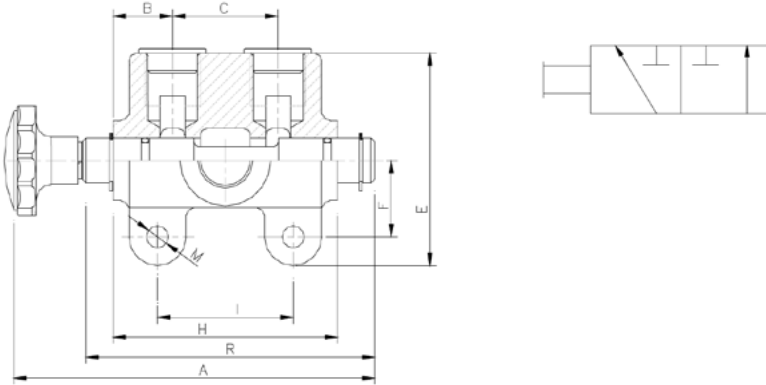
**TECH
DATA**

Manual Diverter Valve - 3 Port Push/Pull

Part #	Ports	Max Pressure	Flow	Mounting
SV80AG12K	1/2" BSPP	210 bar	75 L/min	9mm
SV120AG34K	3/4" BSPP	210 bar	113 L/min	9mm

Dimensions (mm)

Part #	A	B	C	E	F	H	I	M	R
SV80AG12K	147.1	24.6	41.4	84.1	30.2	90.4	54.1	8.9	117.4
SV120AG34K	168.2	28.7	53.9	101.6	38.1	111.3	76.2	8.9	138.2



Badestnost

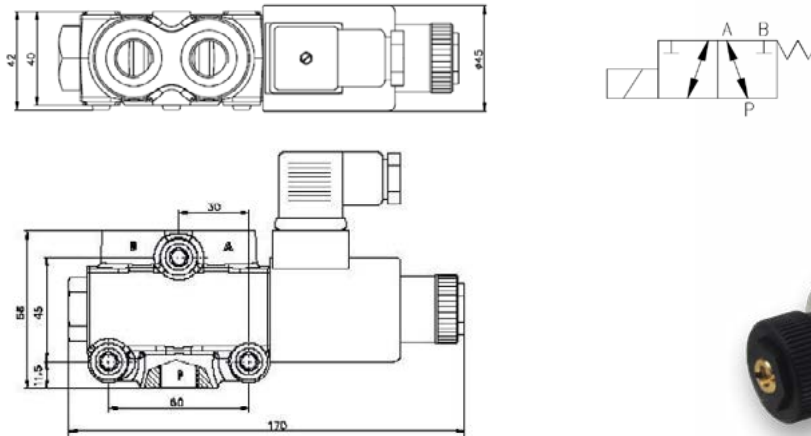
MADE IN EUROPE



**TECH
DATA**

Solenoid Diverter Valve - 3 Port

Part #	Voltage	Flow	Ports	Pressure Drain	Pressure No Drain
3/2FDV061A1012	12v DC	60 L/min	1/2"	315 bar	210 bar
3/2FDV061A1024	24v DC	60 L/min	1/2"	315 bar	210 bar



caproni

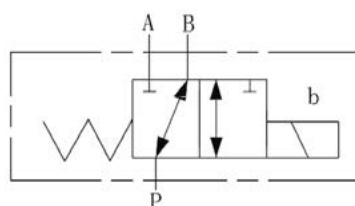
MADE IN EUROPE



**TECH
DATA**

Solenoid Diverter Valves - 3 Port

Part #	Ports	Max Pressure	Max Flow	Spool Crossover
HVC-10-12VDC	1/2" BSPP	250 bar	80 L/min	Open
HVC-10-24VDC	1/2" BSPP	250 bar	80 L/min	Open



**TECH
DATA**

Solenoid Diverter Valve - 6 Port (Stackable)

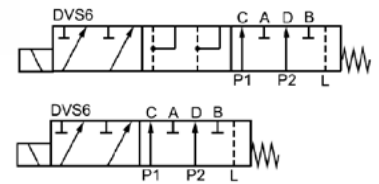
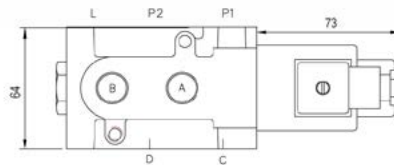
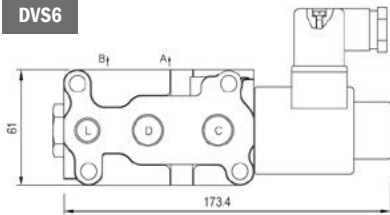
Part #	Handle/ Solenoid	Voltage	Flow	Ports	Pressure		Mounting Holes
					Drain	No Drain	
DVS6-L-12V-G38	Solenoid	12v DC	50 L/min	3/8"	315 bar	210 bar	6.5mm
DVS6-L-24V-G38	Solenoid	24v DC	50 L/min	3/8"	315 bar	210 bar	6.5mm
DV60(R)/A11KZ1-G	Handle	-	60 L/min	3/8"	315 bar	210 bar	6.5mm
SVV-12V-G	Solenoid	12v DC	80 L/min	1/2"	-	210 bar	8.5mm
SVV-24V-G	Solenoid	24v DC	80 L/min	1/2"	-	210 bar	8.5mm

Badestnost

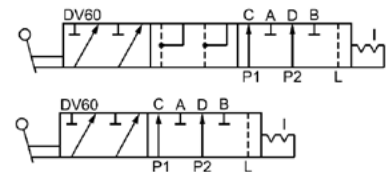
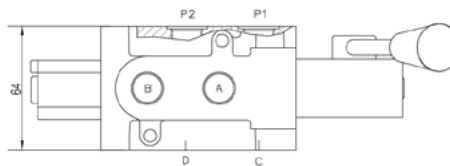
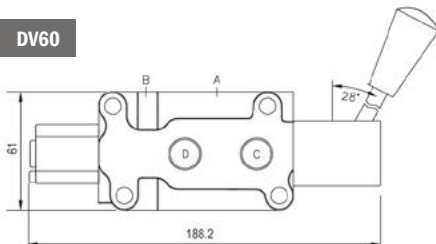
MADE IN EUROPE



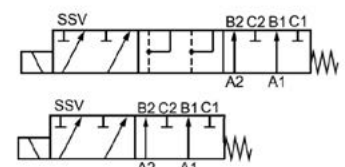
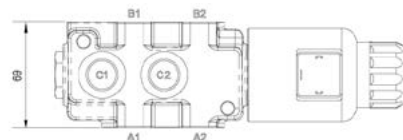
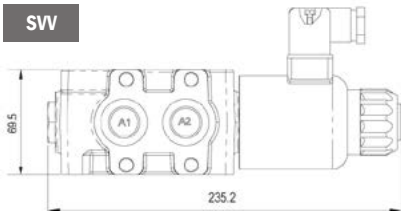
DVS6



DV60



SVV



Replacement Coils

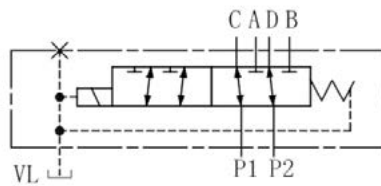
Part #	Voltage	Suits Valve Series
4112977	12v DC	DVS6
4112978	24v DC	DVS6
4102585	12v DC	SVV6
4102588	24v DC	SVV6

TECH DATA

Solenoid Diverter Valves 6 - Port

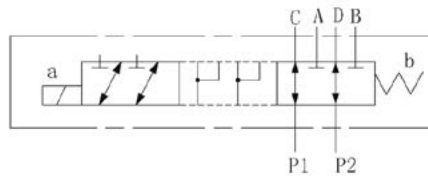
(drain must be fitted above 150 bar where indicated)

Part #	Ports	Drain	Max Pressure	Max Flow	Bankable	Spool Crossover
MOP-06-12VDC	3/8" BSPP	1/4" BSPP	250 bar	50 L/min	Yes	Closed
MOP-06-24VDC	3/8" BSPP	1/4" BSPP	250 bar	50 L/min	Yes	Closed



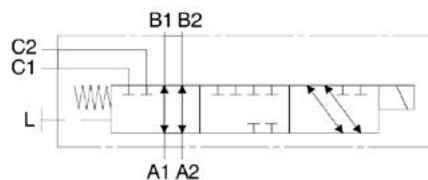
TECH DATA

Part #	Ports	Drain	Max Pressure	Max Flow	Bankable	Spool Crossover
ZVH-06-12VDC	3/8" BSPP	-	210 bar	50 L/min	No	Open
ZVH-06-24VDC	3/8" BSPP	-	210 bar	50 L/min	No	Open



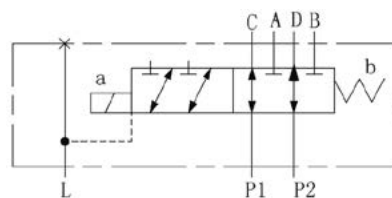
TECH DATA

Part #	Ports	Drain	Max Pressure	Max Flow	Bankable	Spool Crossover
SCS4-1S-1Y-1G4-12VDC	1/2" BSPP	3/8" BSPP	315 bar	80 L/min	Yes	Closed
SCS4-1S-1Y-2G4-24VDC	1/2" BSPP	3/8" BSPP	315 bar	80 L/min	Yes	Closed



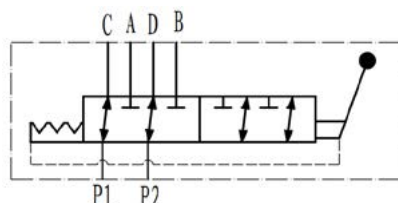
TECH DATA

Part #	Ports	Drain	Max Pressure	Max Flow	Bankable	Spool Crossover
SVK-10-12VDC	3/4" BSPP	1/4" BSPP	250 bar	80 L/min	Yes	Closed
SVK-10-24VDC	3/4" BSPP	1/4" BSPP	250 bar	80 L/min	Yes	Closed



TECH DATA

Part #	Ports	Drain	Max Pressure	Max Flow	Bankable	Spool Crossover
KVH6-MB-G1/2	1/2" BSPP	1/4" BSPP	250 bar	50 L/min	No	Closed



TECH DATA

Solenoid Diverter Valves - Replacement Coils

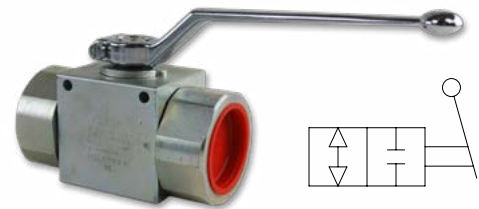
Part #	Voltage	Suits Valves Series
2SCSV001	12v DC	SCS4
2SCSV002	24v DC	SCS4
COIL-06-12VDC	12v DC	MOP, ZVH
COIL-06-24VDC	24v DC	MOP, ZVH
COIL-06-48VDC	48v DC	MOP, ZVH
COIL-06-110VAC	110v AC	MOP, ZVH
COIL-06-220VAC	220v AC	MOP, ZVH
COIL-10-12VDC	12v DC	HVC, SVK
COIL-10-24VDC	24v DC	HVC, SVK
COIL-10-110VAC	110v AC	HVC, SVK
COIL-10-220VAC	220v AC	HVC, SVK



TECH DATA

Ball Valves - 2 Port (Steel)

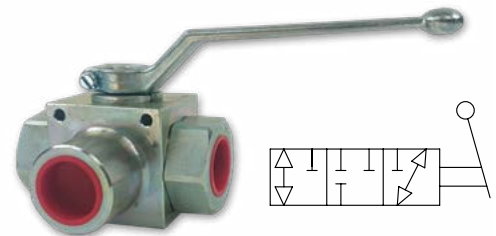
Part #	Ports	Max Pressure	Max Flow
RAS2140P	1/4" BSPP	500 bar	25 L/min
RAS2380P	3/8" BSPP	500 bar	35 L/min
RAS2120P	1/2" BSPP	500 bar	60 L/min
RAS2340P	3/4" BSPP	400 bar	100 L/min
RAS2100P	1" BSPP	350 bar	150 L/min
RAS2114P	1.1/4" BSPP	350 bar	150 L/min
RAS2112P	1.1/2" BSPP	350 bar	150 L/min



TECH DATA

Ball Valves - 3 Port (Steel)

Part #	Ports	Max Pressure	Max Flow
RAS3140P	1/4" BSPP	400 bar	25 L/min
RAS3380P	3/8" BSPP	400 bar	35 L/min
RAS3120P	1/2" BSPP	350 bar	60 L/min
RAS3340P	3/4" BSPP	350 bar	100 L/min
RAS3100P	1" BSPP	350 bar	150 L/min
RAS3114P	1.1/4" BSPP	350 bar	150 L/min
RAS3112P	1.1/2" BSPP	350 bar	150 L/min



TECH DATA

Ball Valves Accessories

Part #	To Fit	Port Size	Description
89800001	RAS2/RAS3	1/4", 3/8", 1/2"	Replacement handle
89800002	RAS2/RAS3	3/4", 1", 1.1/4", 1.1/2"	Replacement handle
LK6-F	RAS2/RAS3	1/4", 3/8", 1/2"	Steel locking device
LK20-F	RAS2/RAS3	3/4", 1", 1.1/4", 1.1/2"	Steel locking device
SB6	RAS2/RAS3	1/4", 3/8", 1/2"	Steel locking device
SB20	RAS2/RAS3	3/4", 1", 1.1/4", 1.1/2"	Steel locking device



LK



SB



**TECH
DATA**

Hand Pump (Single Acting) with Relief - Remote Mounting

Remote mount dual action hand pump for single-acting cylinder, with pressure relief | Rubber shaft protection

Part #	Size	Optimal Pressure	Maximum Pressure
PMP20-BYB-E-S	20 cc	150 bar	350 bar
PM050-BYB-E-S	50 cc	80 bar	280 bar
PM070-BYB-E-S	70 cc	50 bar	200 bar

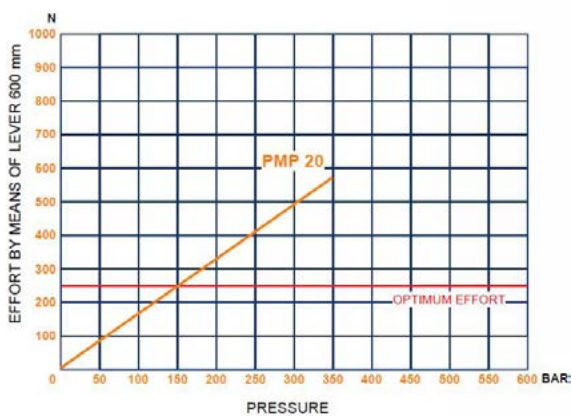
Remote mount dual action hand pump for single-acting cylinder, with pressure relief - plus hand release knob | Rubber shaft protection

Part #	Size	Optimal Pressure	Maximum Pressure
PMP20-BYB-S	20 cc	150 bar	350 bar
PM050-BYB-S	50 cc	80 bar	280 bar
PM070-BYB-S	70 cc	50 bar	200 bar

20cc

EFFORT DIAGRAM

pin in D (distance between centers: 40 mm)



PMP

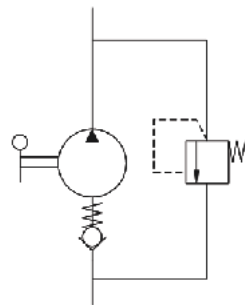
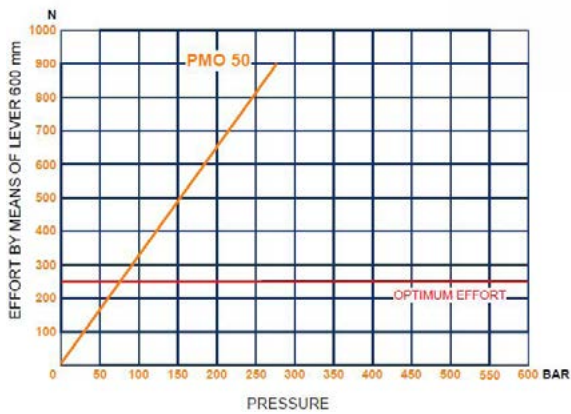


PMO

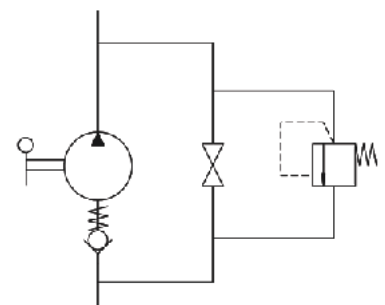
50cc

EFFORT DIAGRAM

pin in E (distance between centers: 51 mm)



Without release hand knob

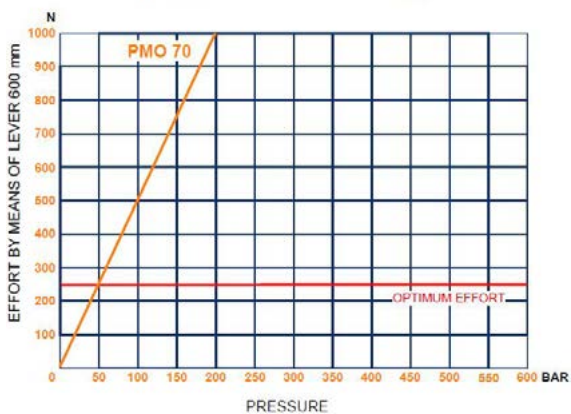


With release hand knob

70cc

EFFORT DIAGRAM

pin in E (distance between centers: 51 mm)



MADE IN EUROPE

**TECH
DATA**

Hand Pump (Single Acting) with Relief - Tank Mount

Dual action hand pump for single-acting cylinder, for fixing to tank. Pressure relief valve with relief release hand knob | Rubber shaft protection

Part #	Size	Optimal Pressure	Maximum Pressure
PM12-BYB-S	12 cc	220 bar	380 bar
PM25-BYB-S	25 cc	120 bar	350 bar
PM45-BYB-S	45 cc	80 bar	250 bar

Dual action hand pump for single-acting cylinder, for fixing to tank. Pressure relief valve with relief release lever | Rubber shaft protection

Part #	Size	Optimal Pressure	Maximum Pressure
PM12-BYB-LS	12 cc	220 bar	380 bar
PM25-BYB-LS	25 cc	120 bar	350 bar
PM45-BYB-LS	45 cc	80 bar	250 bar

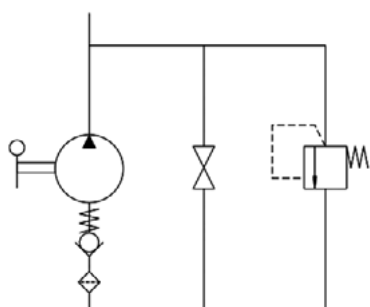


With release hand knob



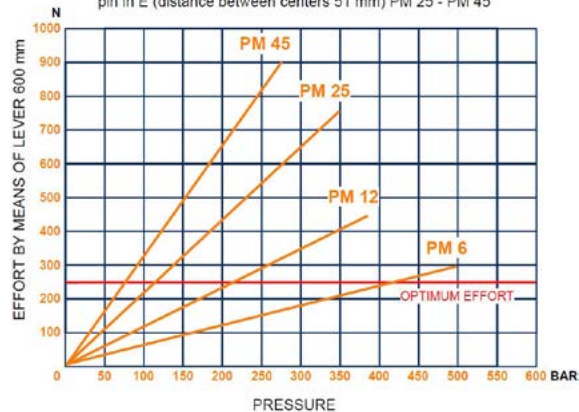
With release lever

Tanks on
page 91



EFFORT DIAGRAM

pin in D (distance between centers 40 mm) PM 6 - PM 12
pin in E (distance between centers 51 mm) PM 25 - PM 45



**TECH
DATA**

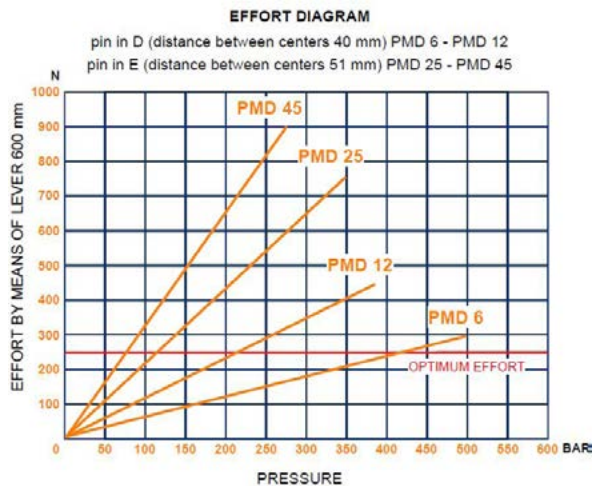
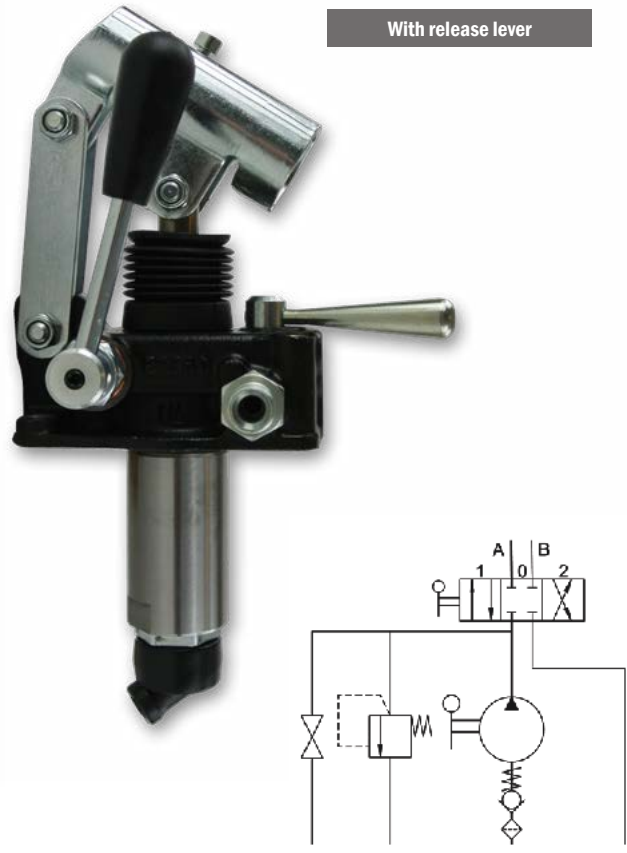
Hand Pump (Double Acting) with Relief - Tank Mount

Dual action hand pump for double-acting cylinder, for fixing to tank. Pressure relief valve, 4/3 flow divider closed centre | Rubber shaft protection

Part #	Size	Optimal Pressure	Maximum Pressure
PMD12-BYB-S	12 cc	220 bar	380 bar
PMD25-BYB-S	25 cc	120 bar	350 bar
PMD45-BYB-S	45 cc	80 bar	280 bar

As above, with release lever

Part #	Size	Optimal Pressure	Maximum Pressure
PMD12-BYA-LS	12 cc	220 bar	380 bar
PMD25-BYA-LS	25 cc	120 bar	350 bar
PMD45-BYA-LS	45 cc	80 bar	280 bar



**Tanks on
page 91**

HV
hydraulic
MADE IN EUROPE

**TECH
DATA**

Hand Pump (Hi-Lo) with Relief - Tank Mount

Rubber shaft protection

Part #	Size		Optimal Pressure		Relief
	Stage 1	Stage 2	Stage 1	Stage 2	
PM2V5/80A-BYB-PM-S	80 cc	5 cc	20 bar	500 bar	Adjustable relief 50-500 bar

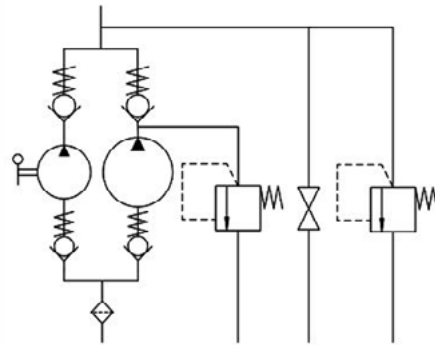
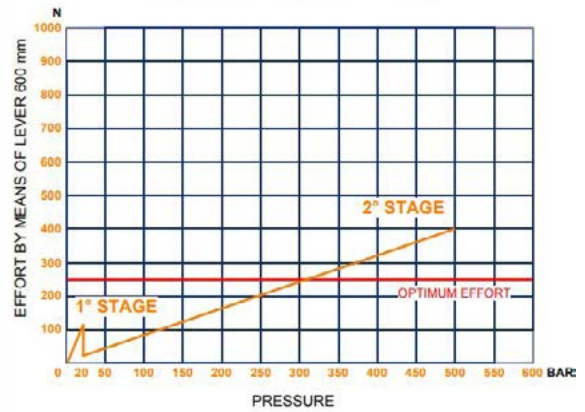


Tanks on
page 91



EFFORT DIAGRAM

pin in E (distance between centers: 51 mm)



**TECH
DATA**

Hand Pump Accessories

Part #	Description
0038.0001.00.00	Rubber boot - pump shafts
6800.0009	Pump handle
3000.0000.01.00	Gasket & bolt kit - PM pumps
3000.0001.00.00	Gasket & bolt kit - PMD pumps
3000.0005.00.00	Lowering valve (blue knob)
3000.0006.00.00	Relief valve
3000.0007.00.00	Unload valve (lever)
0036.0006.00.00	Tank breather

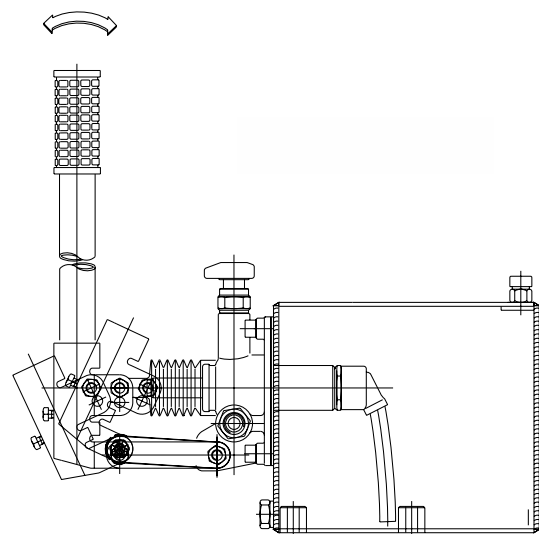
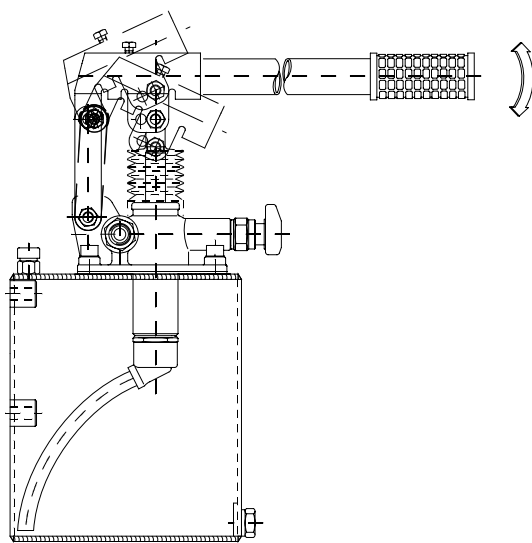
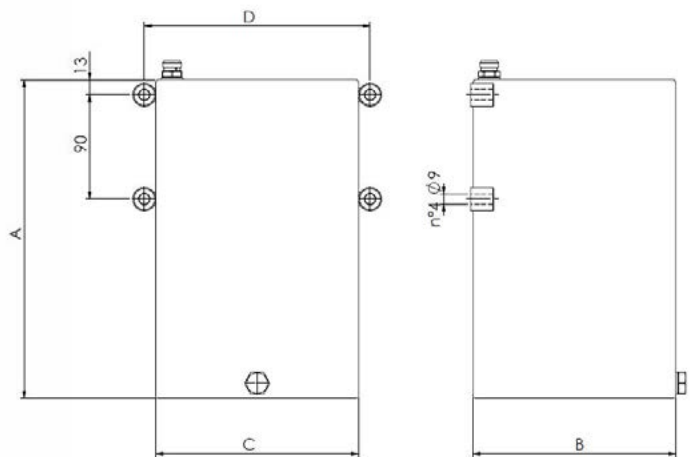


**TECH
DATA**

Hand Pump Tanks

Breather and suction tube on all tanks

Part #	Size	A	B	C	D
6500.0140	1 L	120mm	150mm	100mm	120mm
6500.0141	2 L	185mm	150mm	100mm	120mm
6500.0142	3 L	255mm	150mm	100mm	120mm
6500.0143	5 L	200mm	175mm	175mm	195mm
6500.0144	7 L	275mm	175mm	175mm	195mm
6500.0145	10 L	380mm	175mm	175mm	195mm

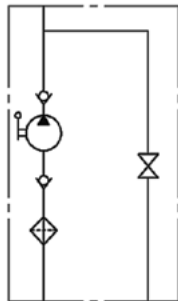
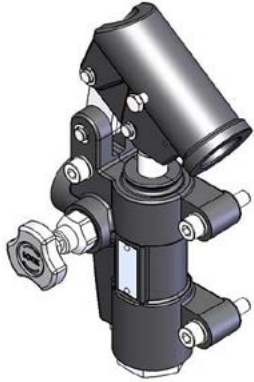


**TECH
DATA**

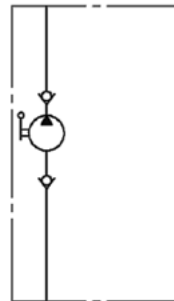
Hand Pump (Single Acting) with Relief - Remote Mount

Remote mount dual action hand pump for single-acting cylinder, with pressure relief. Handle included.

Part #	Size	Optimal Pressure	Maximum Pressure	Release Lever	Relief Valve
PRBC20/E-M-BP	20 cc	225 bar	350 bar	No	No
PRBC20/A-M-BP	20 cc	225 bar	350 bar	Yes	No



with release valve



without release valve

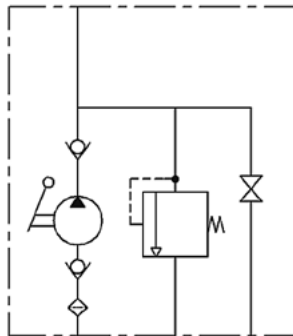
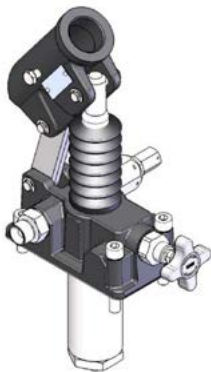
Badestnost
MADE IN EUROPE

**TECH
DATA**

Hand Pump (Single Acting) with Relief - Tank Mount

Dual action hand pump for single-acting cylinder, for fixing to tank. Pressure relief valve with relief release. Handle included.

Part #	Size	Optimal Pressure	Maximum Pressure	Release	Relief Valve
PRB12/A-R-M-BP	12 cc	220 bar	380 bar	Yes	Yes
PRB25/A-R-M-BP	25 cc	120 bar	350 bar	Yes	Yes
PRB45/A-R-M-BP	45 cc	80 bar	280 bar	Yes	Yes



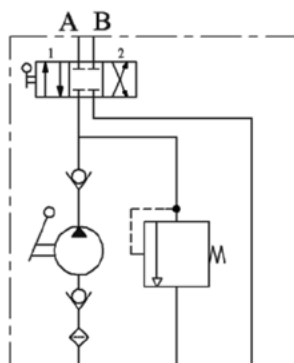
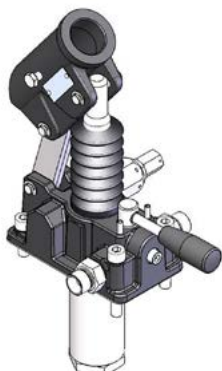
Badestnost
MADE IN EUROPE

**TECH
DATA**

Hand Pump (Double Acting) with Relief - Tank Mount

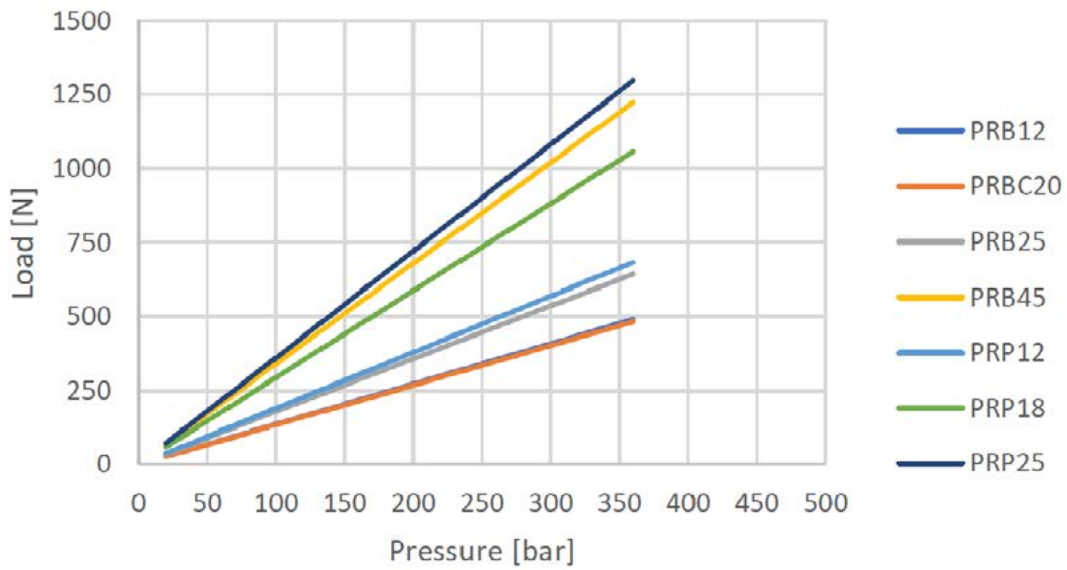
Dual action hand pump for double-acting cylinder, for fixing to tank. Pressure relief valve, 4/3 flow divider. Handle included.

Part #	Size	Optimal Pressure	Maximum Pressure	Release Lever	Relief Valve
PRBD12/E-R-M-BP	12 cc	220 bar	380 bar	No	Yes
PRBD25/E-R-M-BP	25 cc	120 bar	350 bar	No	Yes
PRBD45/E-R-M-BP	45 cc	80 bar	280 bar	No	Yes



Badestnost
MADE IN EUROPE

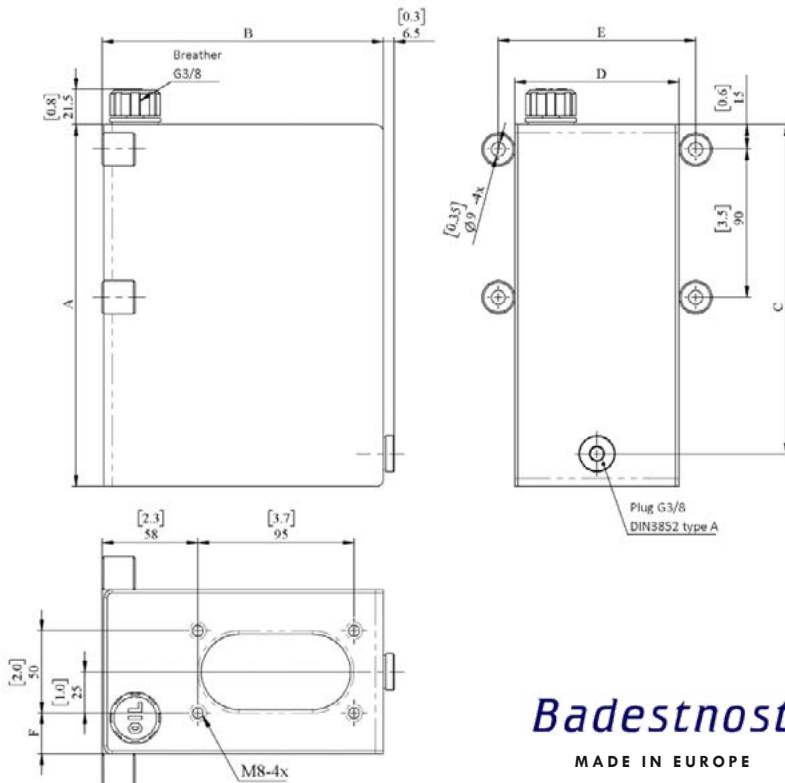
Load effort for 550 mm handle



TECH DATA

Tanks

Part #	Size	A	B	C	D	E	F
RP1	1 L	120mm	171mm	100mm	100mm	120mm	25mm
RP2	2 L	170mm	171mm	150mm	100mm	120mm	25mm
RP3	3 L	200mm	171mm	180mm	100mm	120mm	25mm
RP5	5 L	220mm	176mm	200mm	175mm	195mm	62.5mm
RP7	7 L	290mm	176mm	270mm	175mm	195mm	62.5mm
RP10	10 L	380mm	176mm	360mm	175mm	195mm	62.5mm



Badestnost

MADE IN EUROPE



MELBOURNE

ADDRESS

23 Quinlan Rd, Epping, VIC 3076

EMAIL

sales@hydraulicsnetwork.com.au

PHONE

03 9399 8957

VERMONT

ADDRESS

5/137-145 Rooks Rd, Vermont, VIC 3133

EMAIL

salessev@hydraulicsint.com.au

PHONE

03 9874 1155

BRISBANE

ADDRESS

19 Silvio St, Richlands, QLD 4077

EMAIL

salesqld@hydraulicsnetwork.com.au

PHONE

07 3277 5969

PERTH

ADDRESS

2/44 Vinnicombe Dr, Canning Vale, WA 6155

EMAIL

saleswa@hydraulicsnetwork.com.au

PHONE

08 6385 3555

www.hydraulicsnetwork.com.au