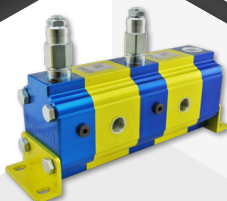


Hydraulics Network

CATALOGUE **2026**
PISTON PUMPS



MiMOTION

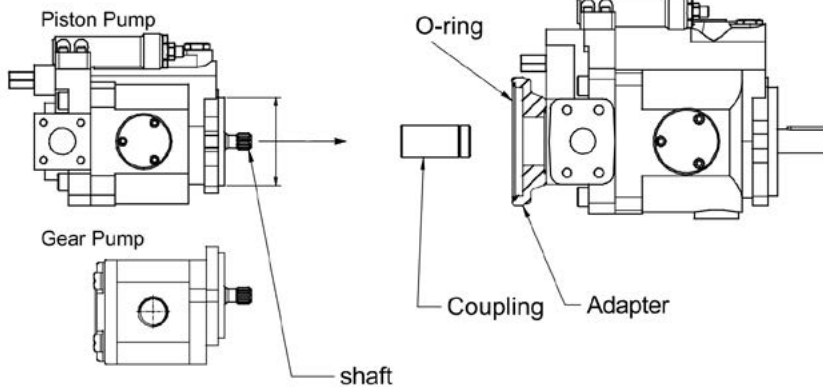
**TECH
DATA**

V-Axial Pressure Compensated Piston Pumps

Part #	Flange	Displacement at 100psi (7 bar)			Press. Adj. Range Bar	Speed RPM		Thread		Weight KG
		cm ³ /rev	1500rpm L/min	1800rpm L/min		Max	Min	Inlet	Outlet	
V15	SAE A	15.0	22.5	27.0	1: 8~70 2: 15~140 3: 20~210 4: 20~250	1800	500	3/4" BSPP	3/4" BSPP	13
V23	SAE B	23.0	35.4	41.4		1800	500	1" BSPP	3/4" BSPP	22
V38	SAE B	37.8	56.7	68.0		1800	500	1.1/4" BSPP	1" BSPP	26
V50	SAE C	51.5	77.2	92.7	1: 8~70 2: 15~140 3: 20~210	1800	500	1.1/2" BSPP	1.1/4" BSPP	56
V70	SAE C	69.7	104.5	125.4		1800	500	1.1/2" BSPP	1.1/4" BSPP	56

Pump 2

Pump 1



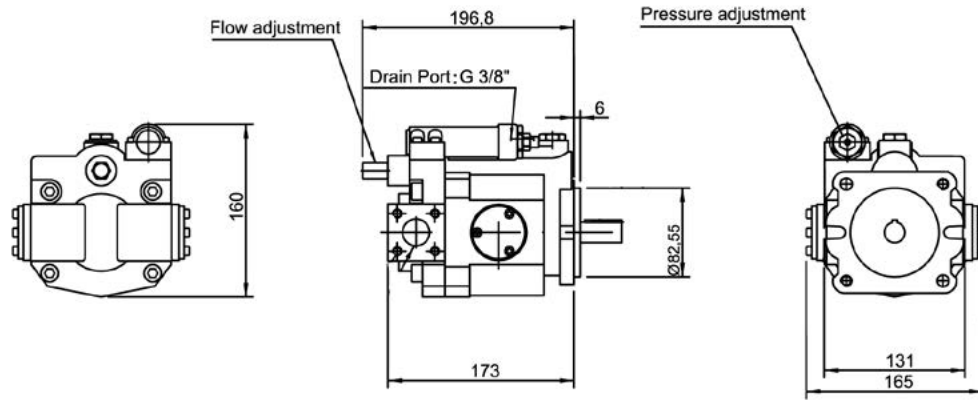
Thru Drive Couplers

Part #	Piston Pump Displacement	Thru Drive Mount	Spline
COUPV15-15	V15-17	SAE A	9 Tooth
COUPV23-1	V23-25	SAE A	9 Tooth
COUPV38-1	V38-42	SAE A	9 Tooth
COUPV70-1	V50-70	SAE A	9 Tooth

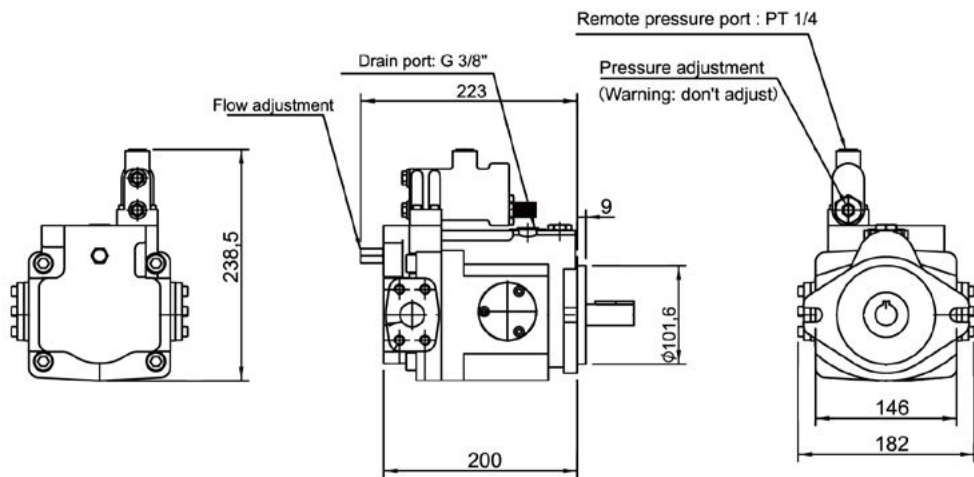
V-Axial Piston Pump Seal Kits

Part #	Piston Pump
5E00033	V15-17
5E00035	V23-25
5E00037	V38-42
5E00042	V50-70

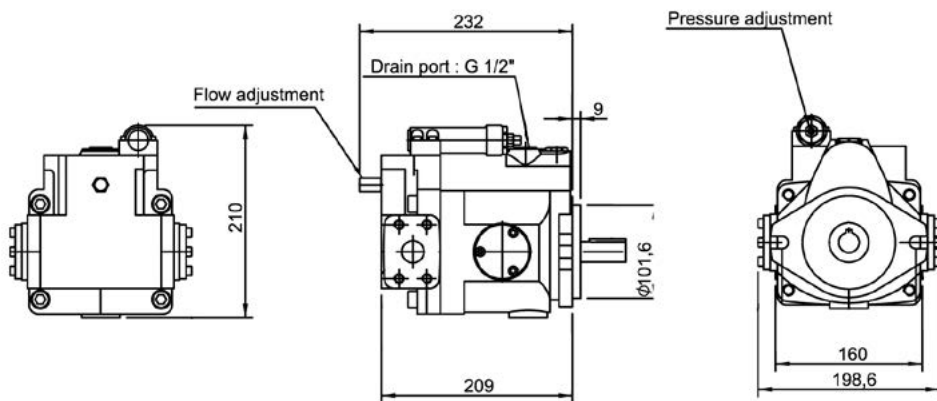
V15



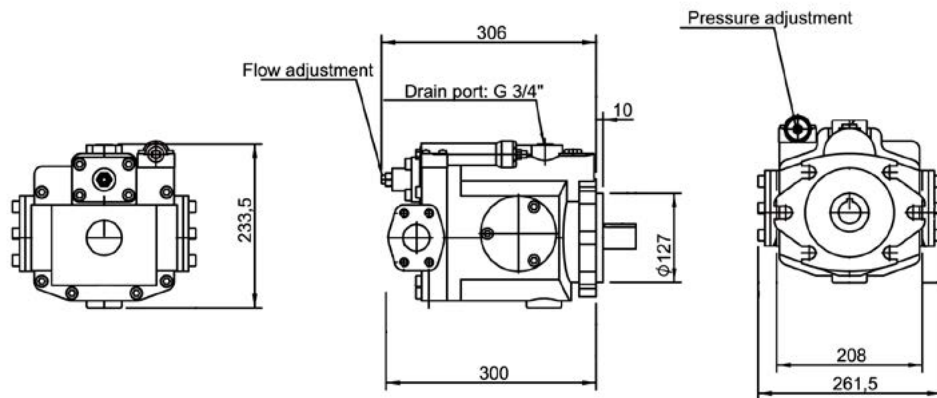
V23



V38



V50-V70



Above drawings are for standard V-axial piston pump with pressure compensated controller. For thru drives and other controller dimensions, please download technical data from our website.

SERIES	DISP.	CONTROL DEVICE	PRESSURE ADJUSTING	ROTATION	-	SHAFT	THREAD	THRU DRIVE + 2nd PUMP
V	15	A	3	R	-	S	40	D

SERIES

V	V-Axial piston pump Variable displacement High pressure version Side Port (flange)	Nominal pressure: 175 bar Maximum pressure: 280 bar Single operation period: 250 bar (6ms), 315 bar (2.5ms)
---	---------------------------------------------------------------------------------------------	-------------------------------------------------------------------------------------------------------------------

DISPLACEMENT

	15	23	38	50	70
Pump size	1	2	3	4	4
Displacement cm ³ /rev	15	23	37.8	51.5	69.7

CONTROL DEVICE



A	Pressure compensated
G	Remote pressure compensated
HLC	Load Sense

Control	Description	Circuit	Characteristic
A	<p>Pressure compensated</p> <ol style="list-style-type: none"> When system pressure increases and reaches required level, the flow decreases automatically and the pressure is constant. Pressure and flow can be manually adjusted. 		
G	<p>Remote pressure compensated</p> <ol style="list-style-type: none"> The same function of control type A. Pressure can be adjusted remotely by the remote control valve. 		
HLC	<p>Load sense</p> <ol style="list-style-type: none"> HL valve with two different pressures, control displacement. The flow can be changed by HL valve, the sensing feedback can reach low oil temperature and save energy. 		

PRESSURE ADJUSTING

1	8 - 70 bar
2	15 - 140 bar
3	20 - 210 bar
4	20 - 250 bar

ROTATION

R	Clockwise 
L	Counter Clockwise 

SHAFT TYPE

V15	-	SAE A, keyed 3/4"
	S	SAE A, 13T 16/32 DP
V23, V38	-	SAE B, Keyed 7/8"
	S	SAE B, 13T 16/32 DP
V50, V70	-	SAE C, Keyed 1.1/4"
	S	SAE C, 14T 12/24 DP

THREAD TYPE

40	BSPP (G)
-----------	----------

THRU DRIVE & SECOND PUMP

D	V15, V23, V38	Ø 82.55mm, SAE A
D	V50, V70	Ø 82.55mm, SAE A



MELBOURNE

ADDRESS

23 Quinlan Rd, Epping, VIC 3076

EMAIL

sales@hydraulicsnetwork.com.au

PHONE

03 9399 8957

VERMONT

ADDRESS

5/137-145 Rooks Rd, Vermont, VIC 3133

EMAIL

salessev@hydraulicsint.com.au

PHONE

03 9874 1155

BRISBANE

ADDRESS

19 Silvio St, Richlands, QLD 4077

EMAIL

salesqld@hydraulicsnetwork.com.au

PHONE

07 3277 5969

PERTH

ADDRESS

2/44 Vinnicombe Dr, Canning Vale, WA 6155

EMAIL

saleswa@hydraulicsnetwork.com.au

PHONE

08 6385 3555

www.hydraulicsnetwork.com.au